

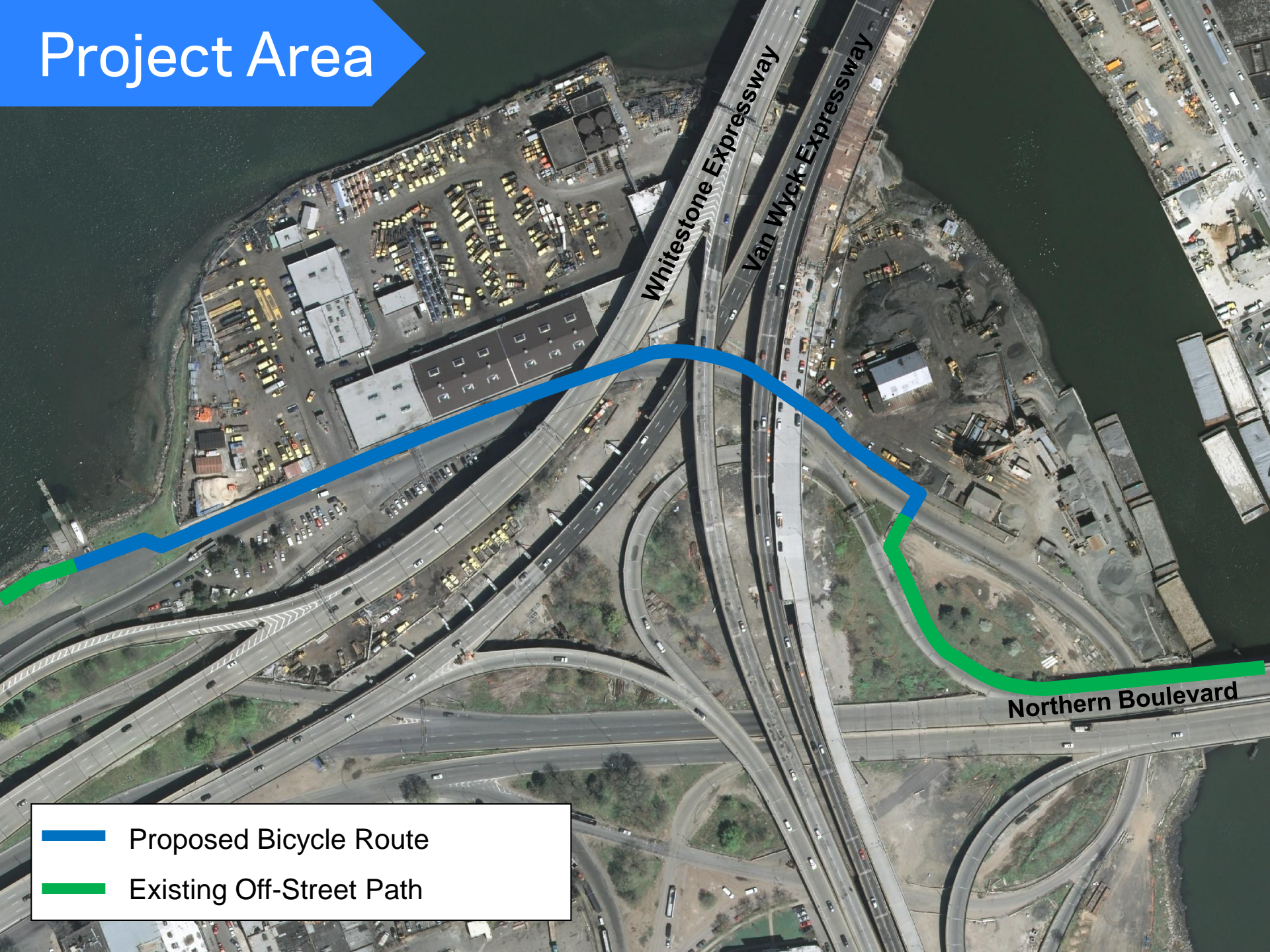
Flushing Bay Promenade Access

Bicycle Path and Pedestrian Improvements



Commissioner Janette Sadik-Khan, New York City Department of Transportation
Presented October 11, 2011 by NYCDOT Bicycle Program to
Queens Community Board 7, Transportation Committee

Project Area



Whitestone Expressway

Van Wyck Expressway

Northern Boulevard

- Proposed Bicycle Route
- Existing Off-Street Path

Background

- Bike path connection requested by Queens Borough President Helen Marshall
- Bike connection from Flushing to Flushing Bay Promenade
- New NYCDOT asphalt plant requires infrastructure improvements



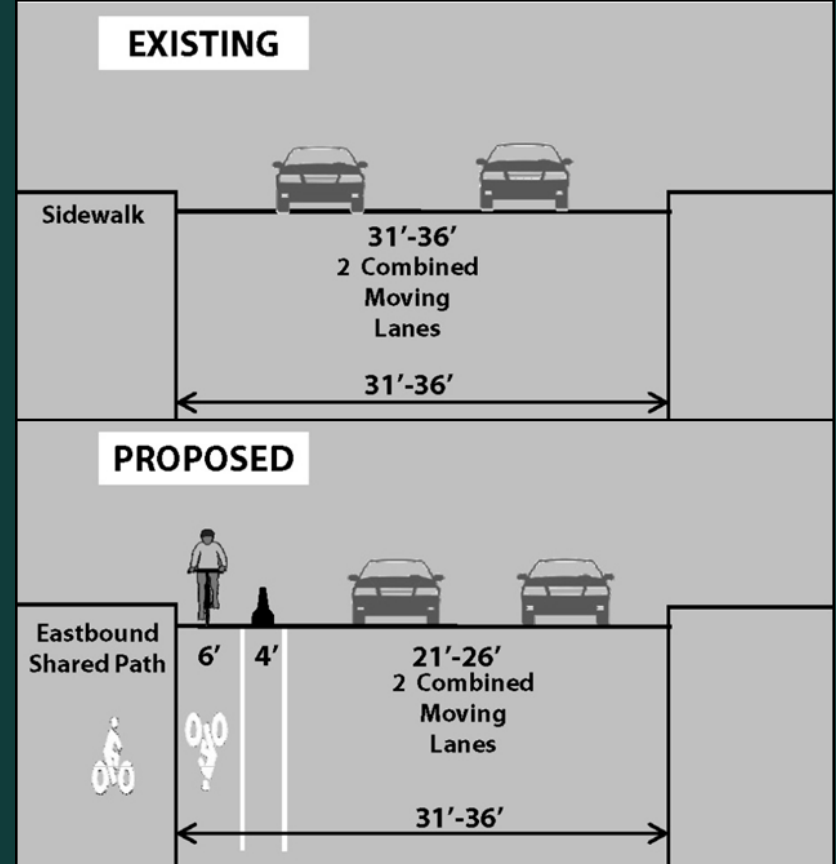
Existing Conditions

- No dedicated space on street for WB cyclists
- No legal EB bicycle route to Flushing
- Van Wyck NB exit ramp prone to flooding
- Sidewalk and curb are in poor condition and present many obstacles



Design Proposal

- New 6-foot westbound, barrier-protected bike path
- New eastbound off-street shared path
- New pedestrian ramps
- Study pedestrian actuated signal at Northern Boulevard Bridge entrance



Project Timeline

Install new sidewalk and curb

- Autumn 2011

Install new pedestrian ramps

- Autumn 2011

Milling and paving

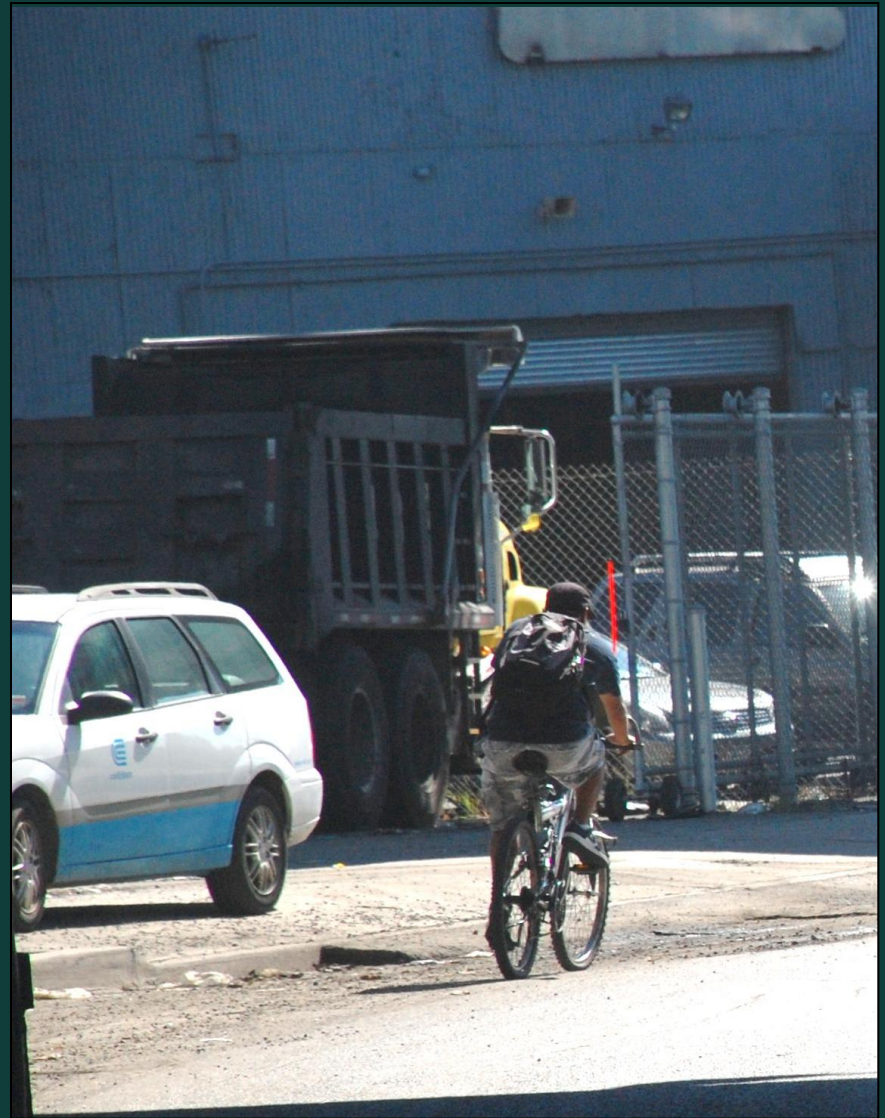
- Autumn 2011

Bicycle path installation

- 2012

Traffic signal installation

- 2012 (if necessary)



Questions?

**Thank
You**