

# Randall / Leggett / Tiffany Avenues

Safety Improvements & Barretto Point Park Access

Spring  
2010



Commissioner Janette Sadik-Khan New York City Department of Transportation  
Presented May 12, 2010 by the Pedestrian Projects Group to Community Board 2  
Updated June 16, 2010

# Project Area

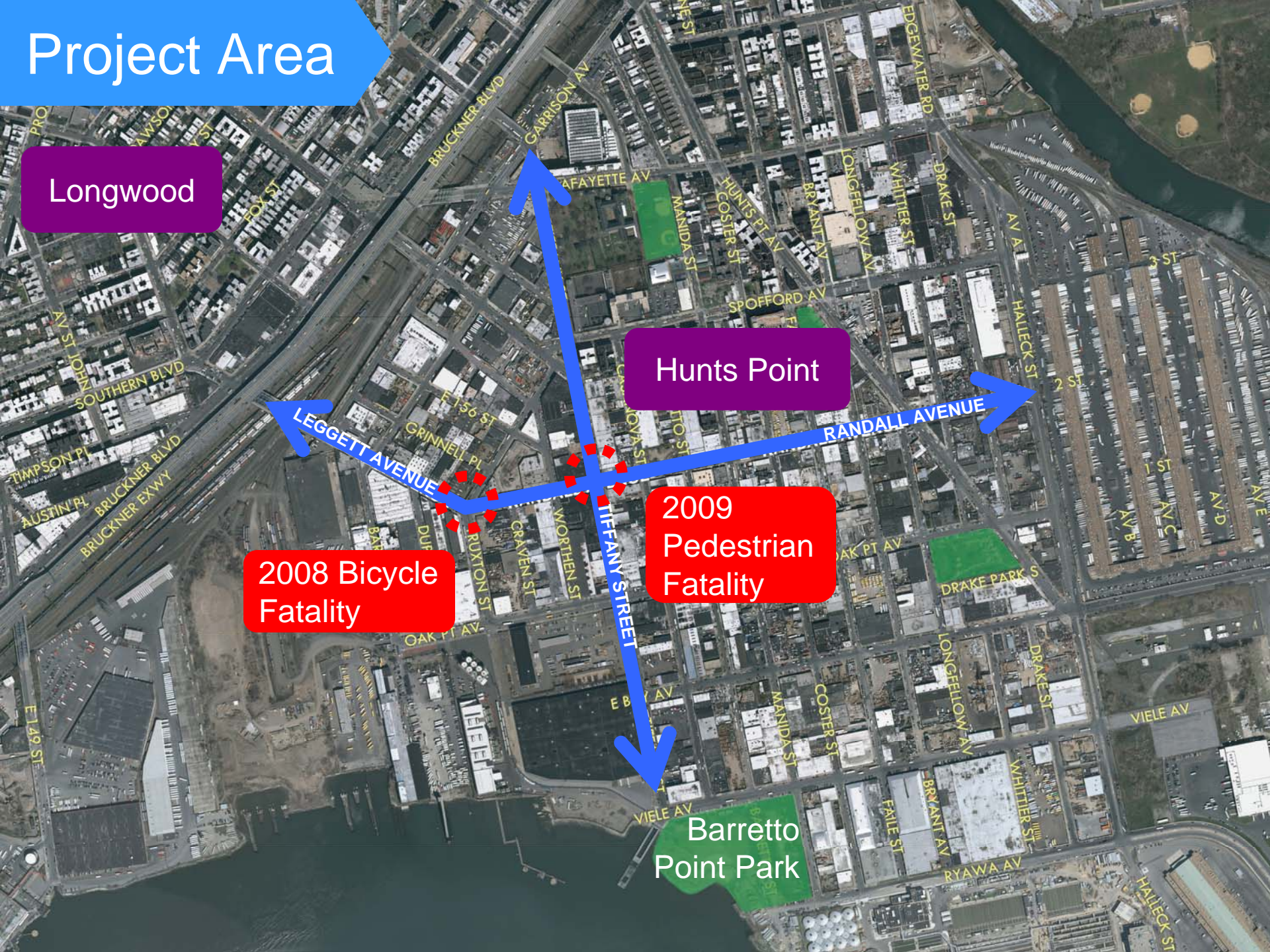
Longwood

Hunts Point

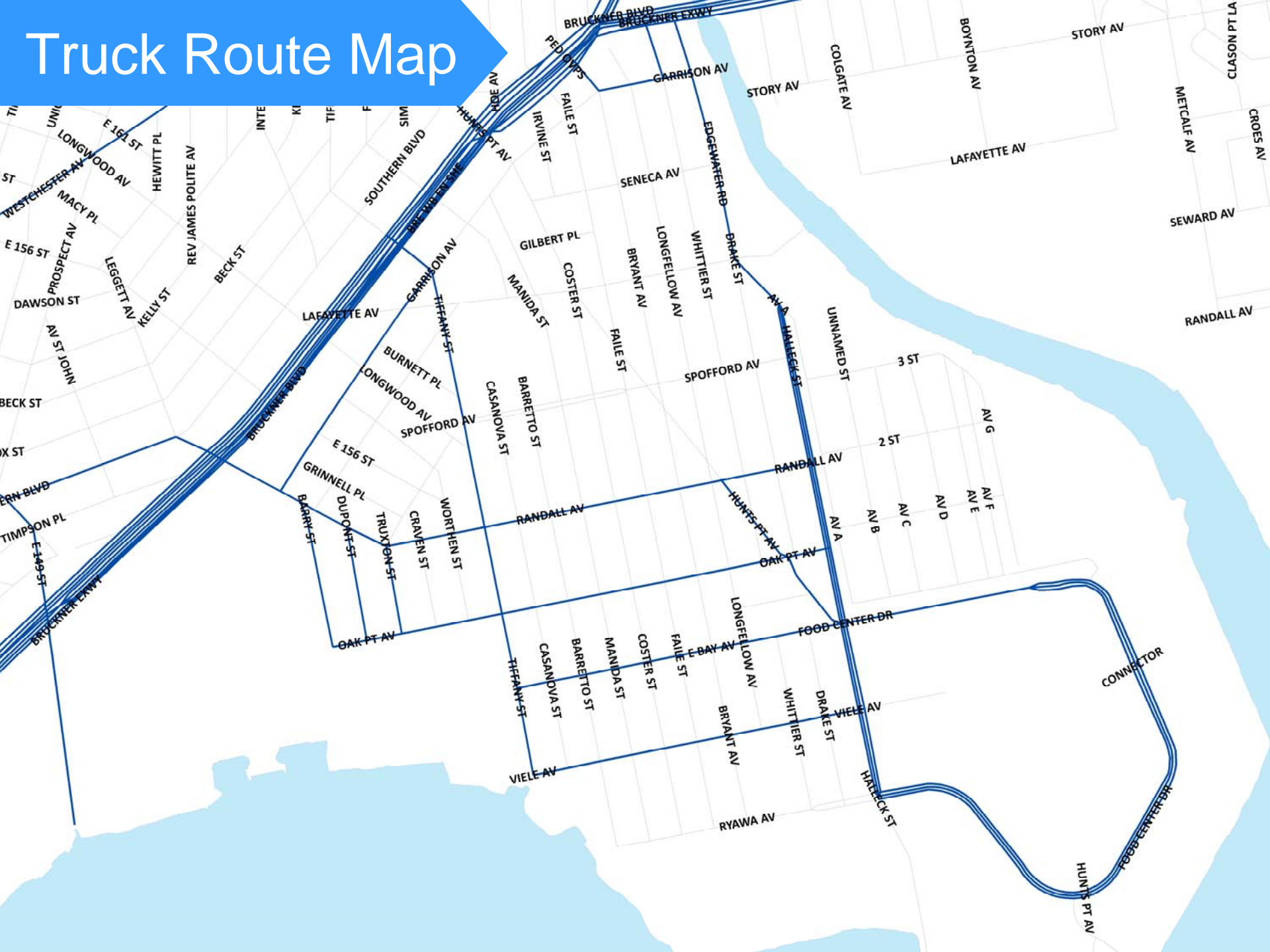
2008 Bicycle Fatality

2009 Pedestrian Fatality

Barretto Point Park

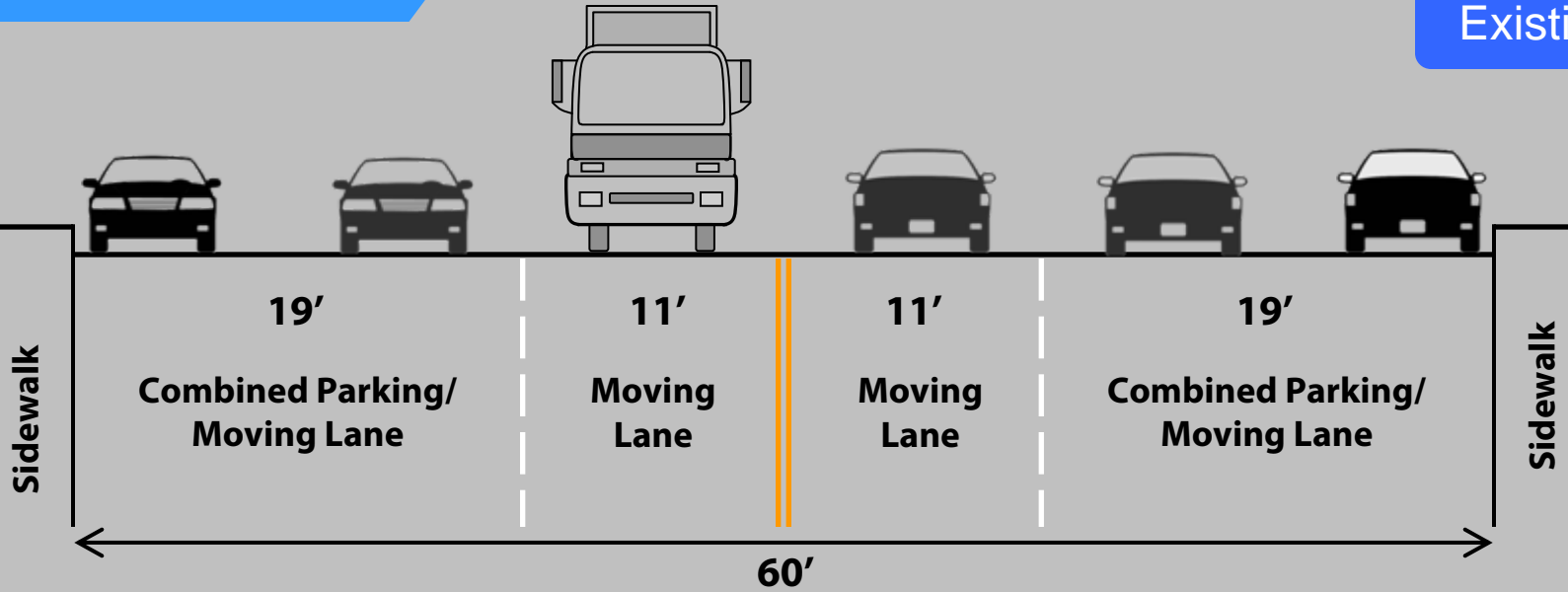


# Truck Route Map

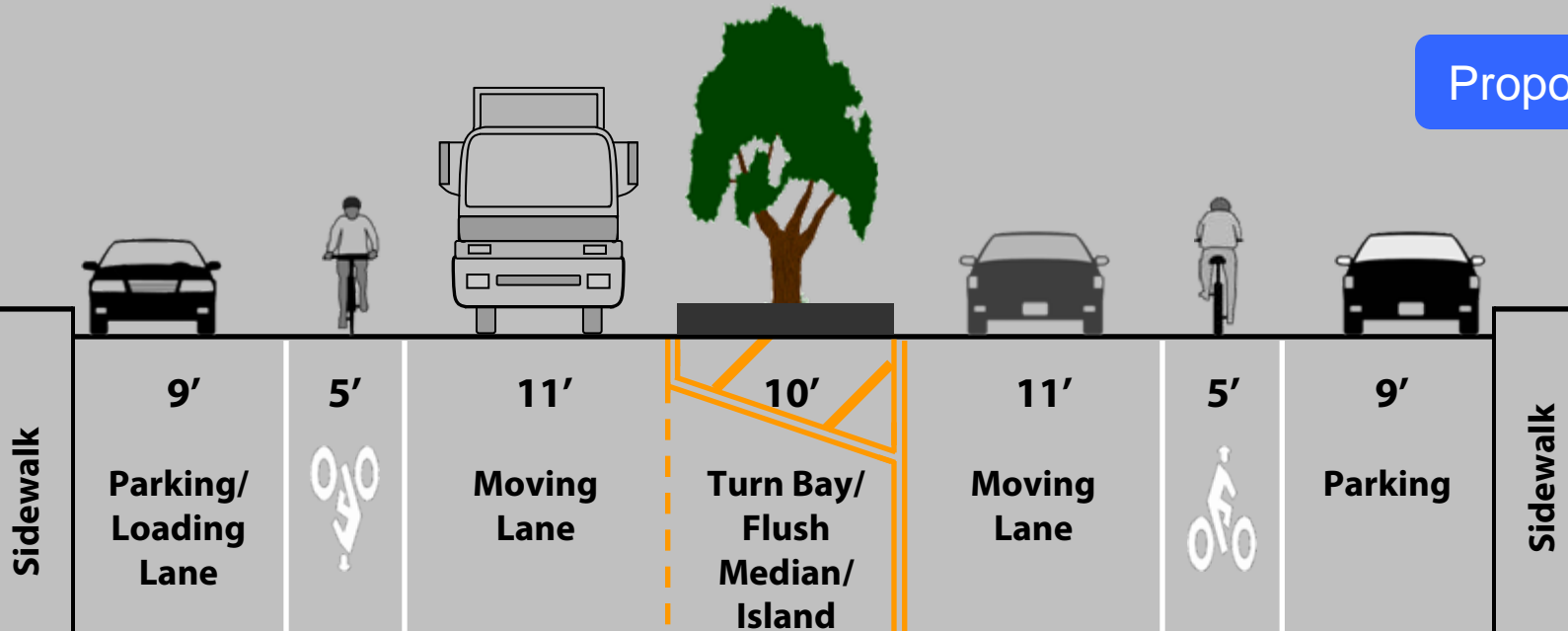


# Cross-section

Existing

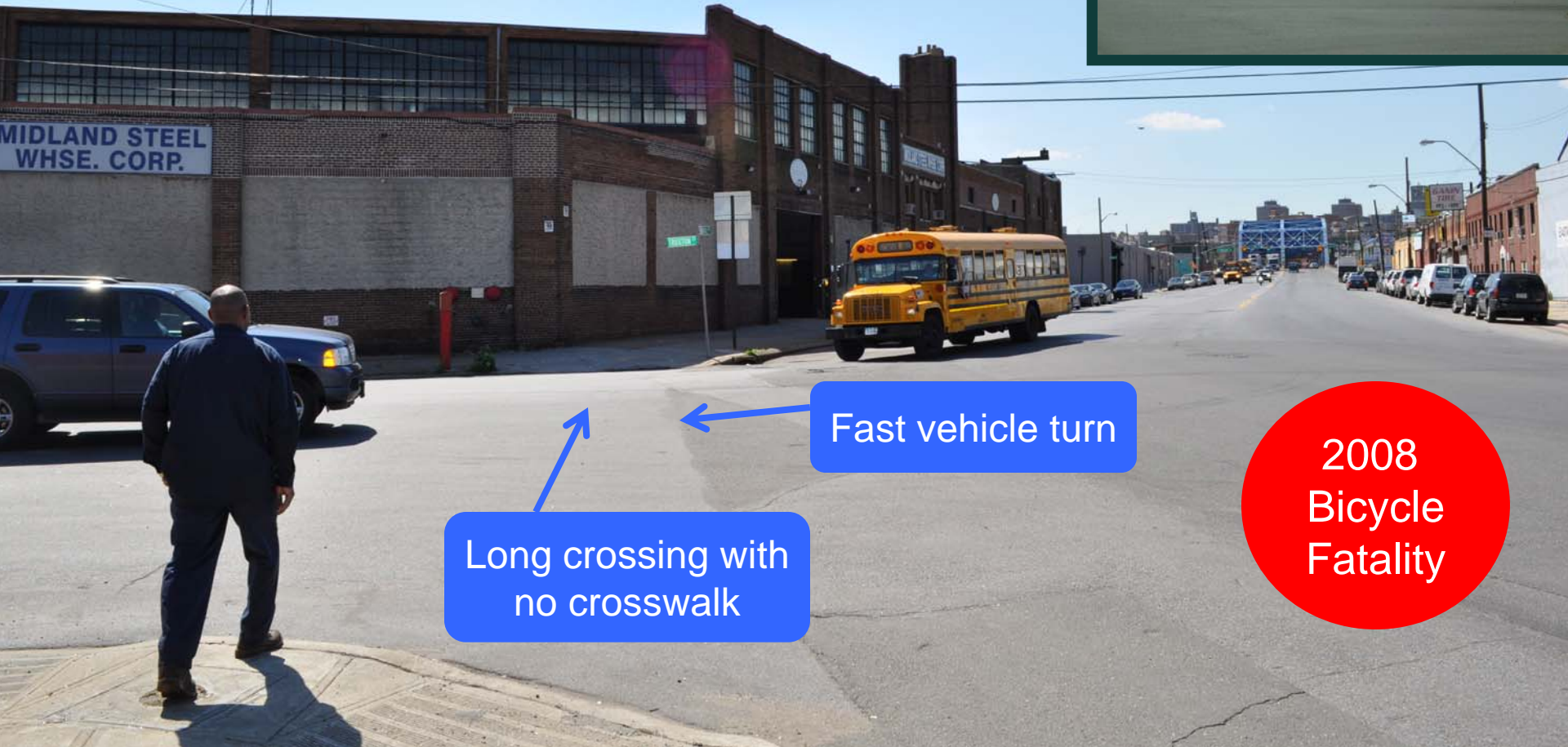


Proposed



# Leggett/Randall Aves at Truxton St

Existing Conditions



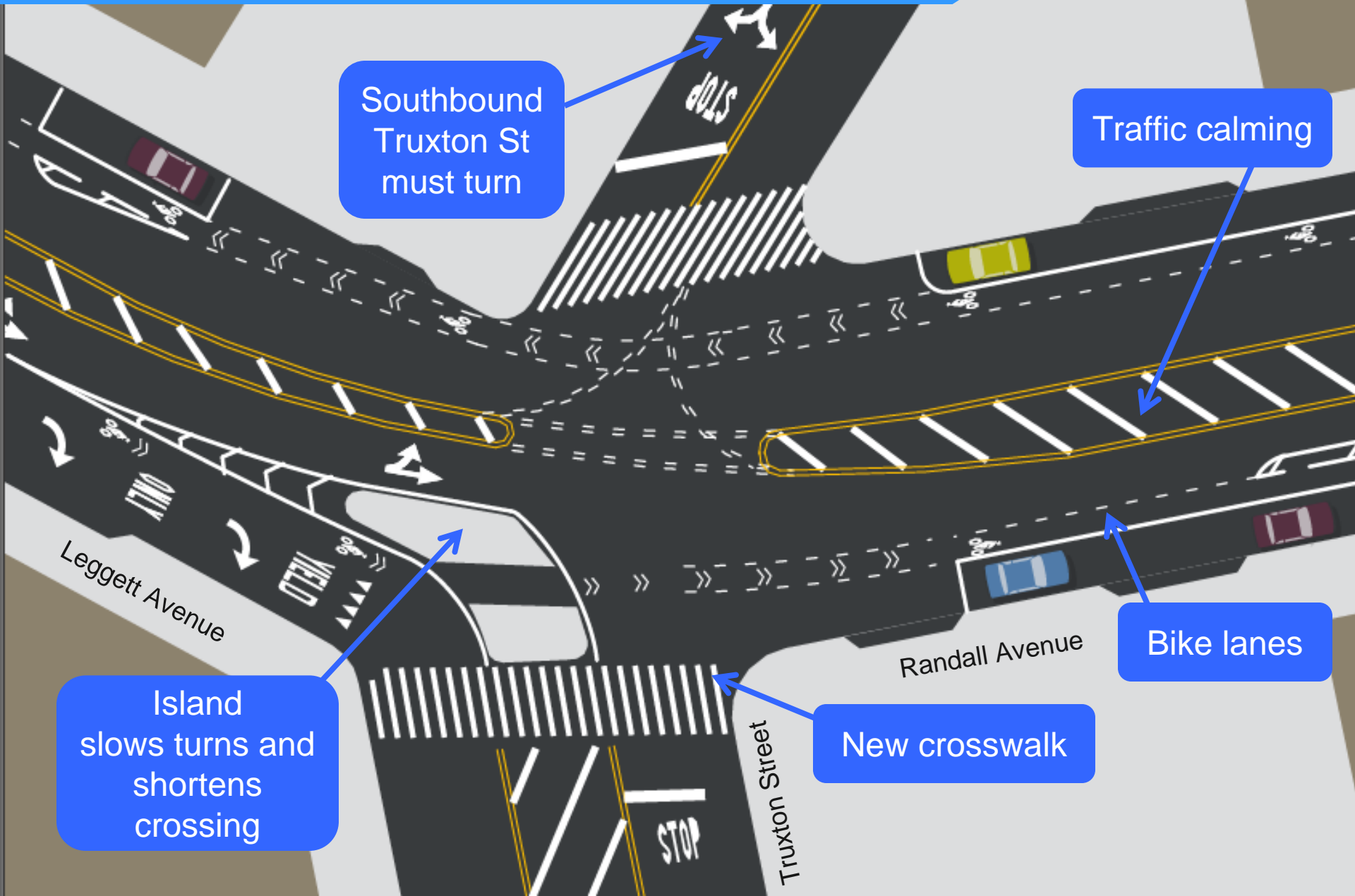
Long crossing with no crosswalk

Fast vehicle turn

2008 Bicycle Fatality

# Leggett/Randall Aves at Truxton St

Proposal



# Randall Ave at Tiffany St

Existing Conditions



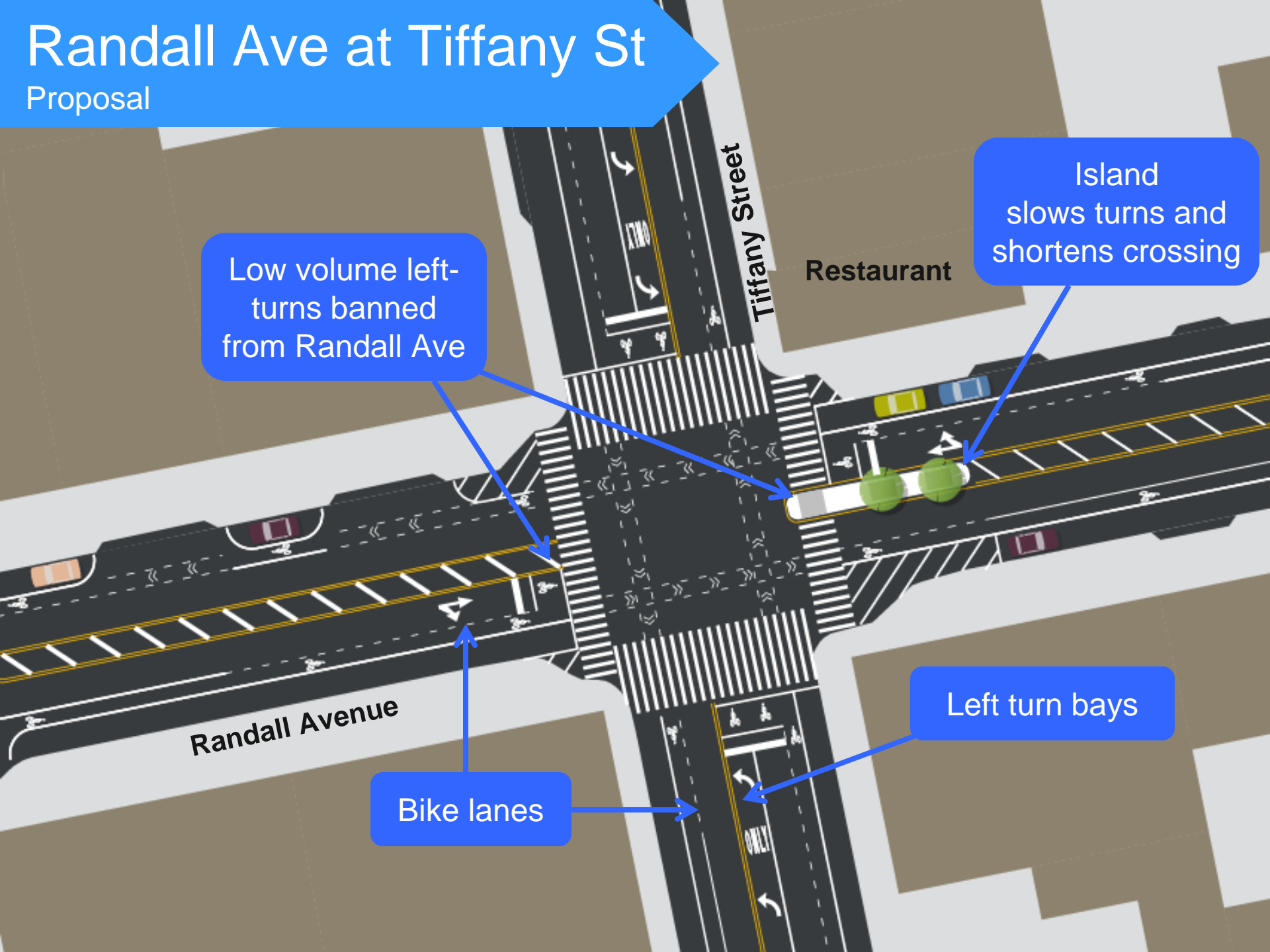
Long crossing  
with truck turns



2009  
Pedestrian  
Fatality

# Randall Ave at Tiffany St

Proposal



Low volume left-turns banned from Randall Ave

Island slows turns and shortens crossing

Restaurant

Left turn bays

Bike lanes

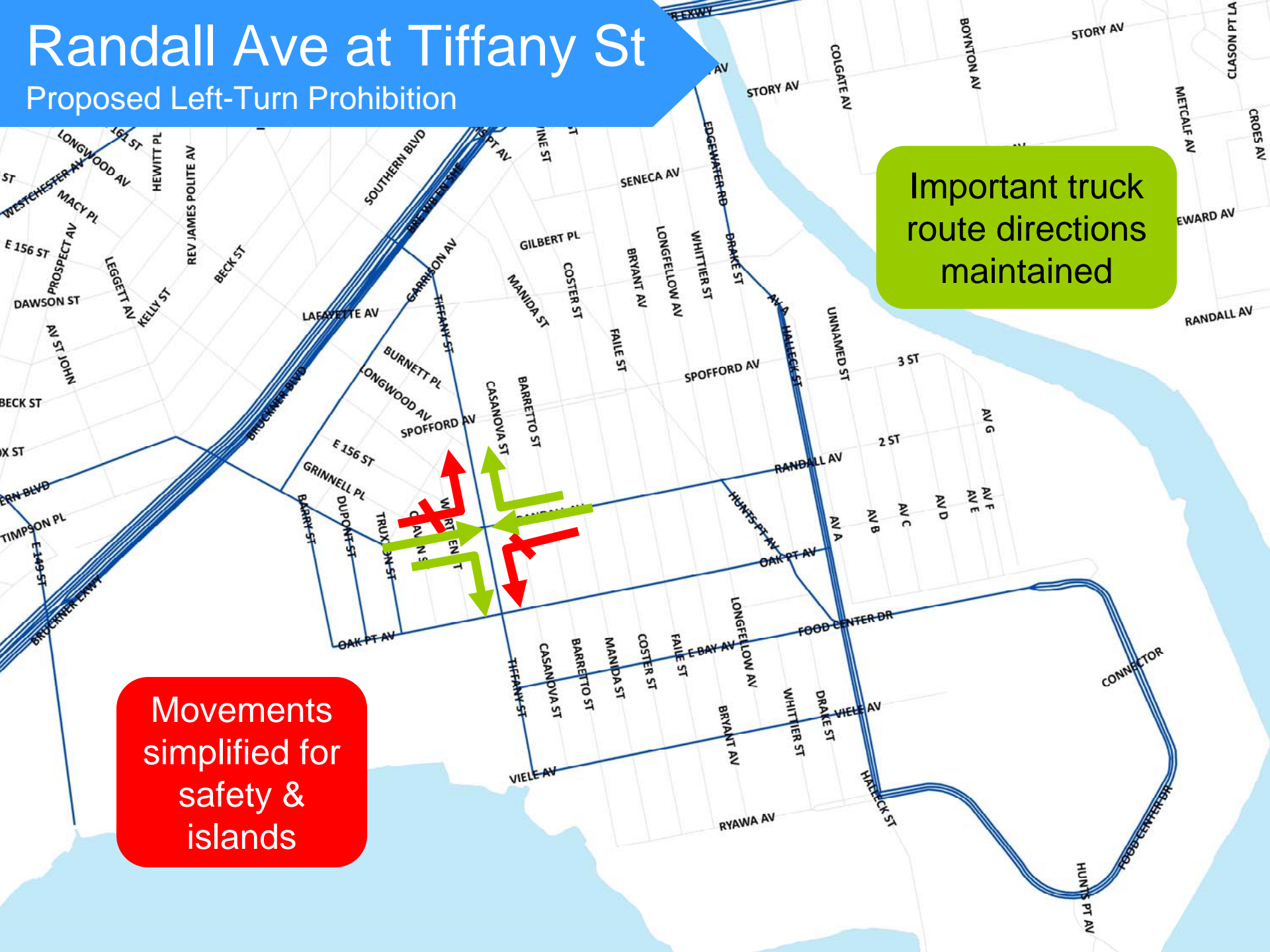
Randall Avenue

Tiffany Street



# Randall Ave at Tiffany St

## Proposed Left-Turn Prohibition



Important truck route directions maintained

Movements simplified for safety & islands

# Tiffany St to Barretto Point Park

Existing Conditions



Park in industrial  
area with limited  
access options

# Tiffany St to Barretto Point Park

Proposal



Tiffany Street

Bike access

Viele Avenue

Refurbished crosswalks

Barretto Point Park Entrance

# Longfellow Ave at Randall Ave

Existing Conditions



Randall Avenue

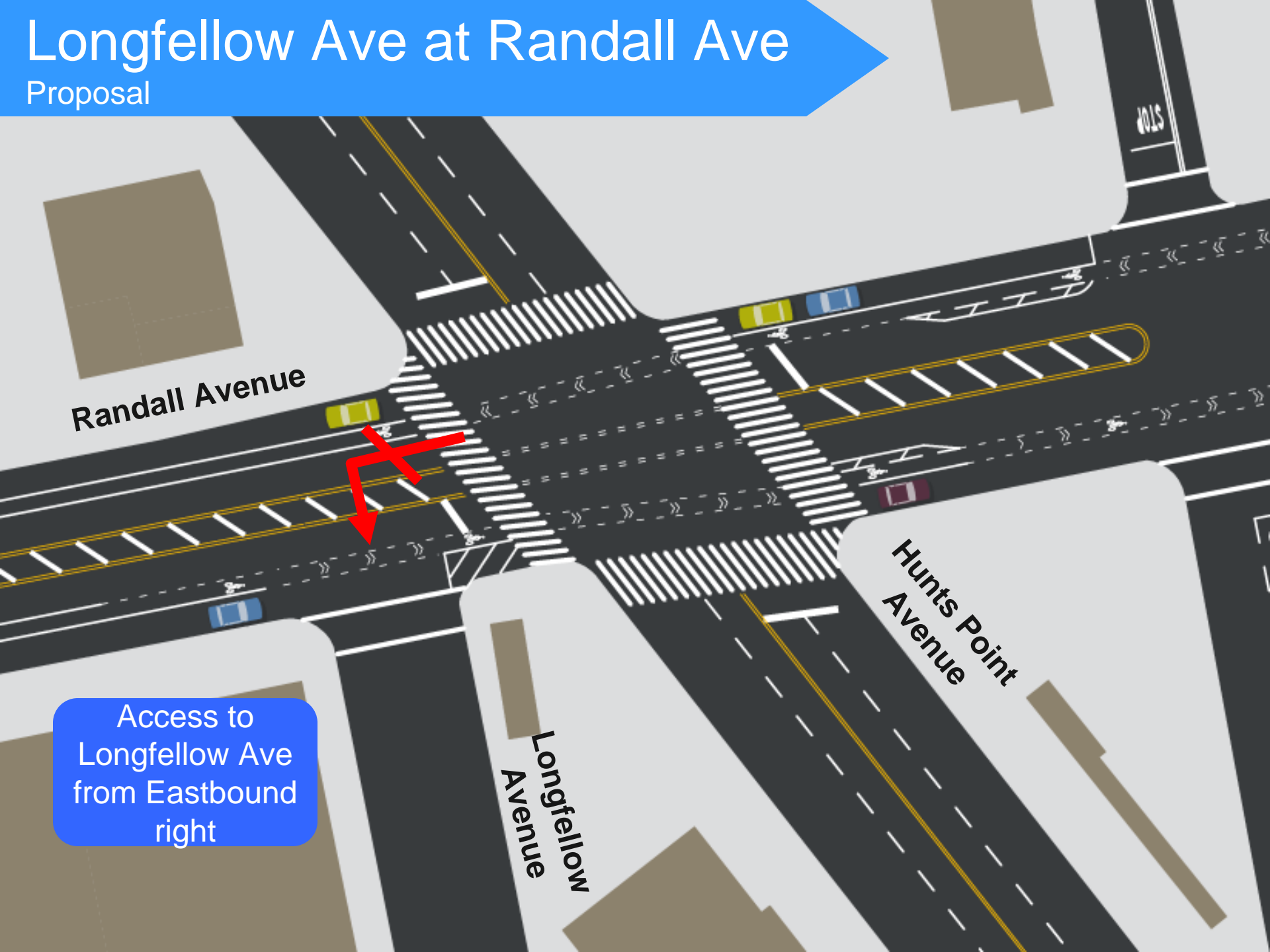
Hunts Point Avenue

Confusing &  
unexpected  
movement

Longfellow  
Avenue

# Longfellow Ave at Randall Ave

Proposal



Randall Avenue

Hunts Point Avenue

Longfellow Avenue

Access to Longfellow Ave from Eastbound right

[www.nyc.gov/dot](http://www.nyc.gov/dot)

Thank  
You

