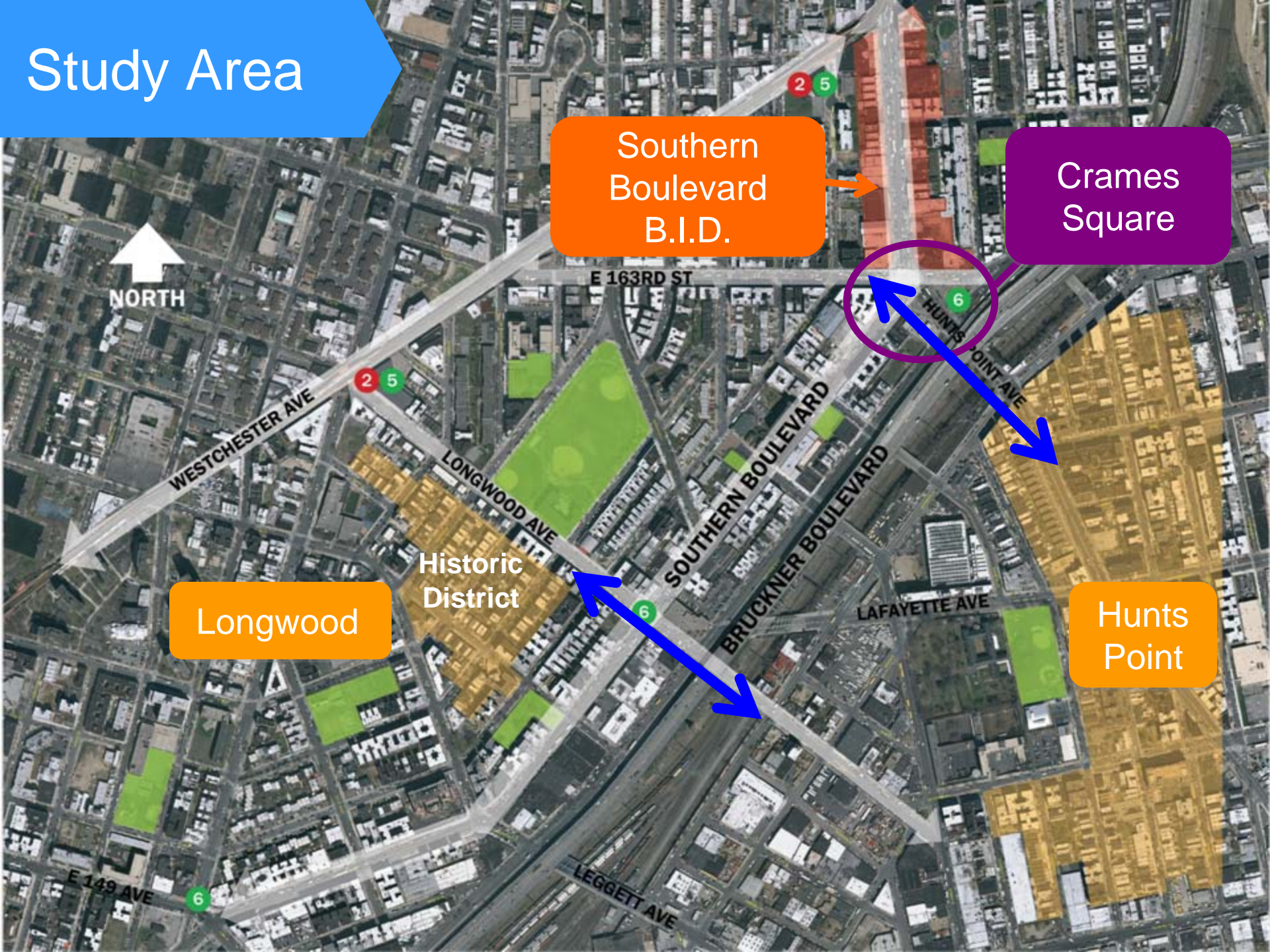


Southern Boulevard: Crames Square

FALL
2010



Study Area



Southern
Boulevard
B.I.D.

Crames
Square

Longwood

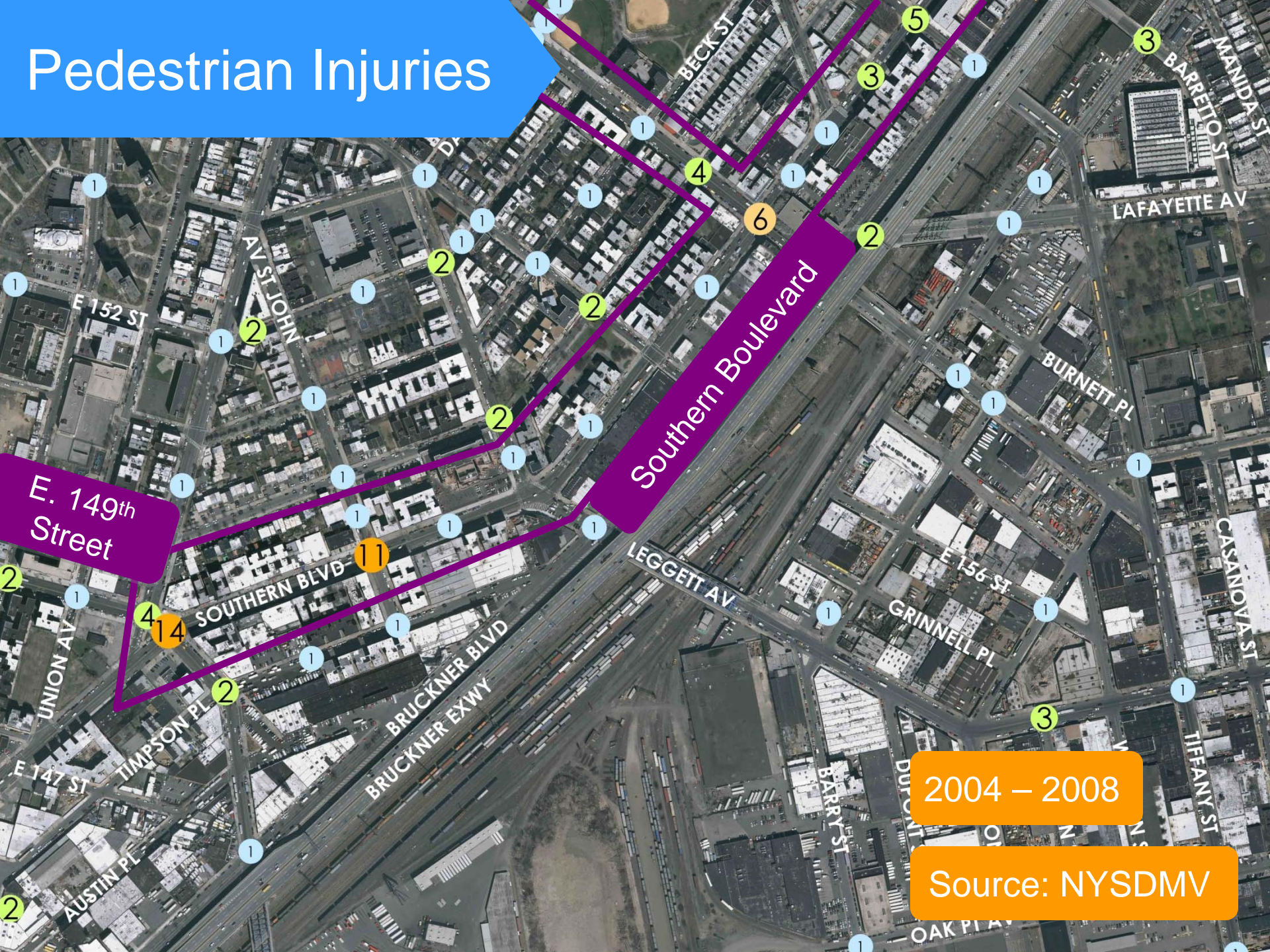
Historic
District

Hunts
Point

Pedestrian Injuries



Pedestrian Injuries



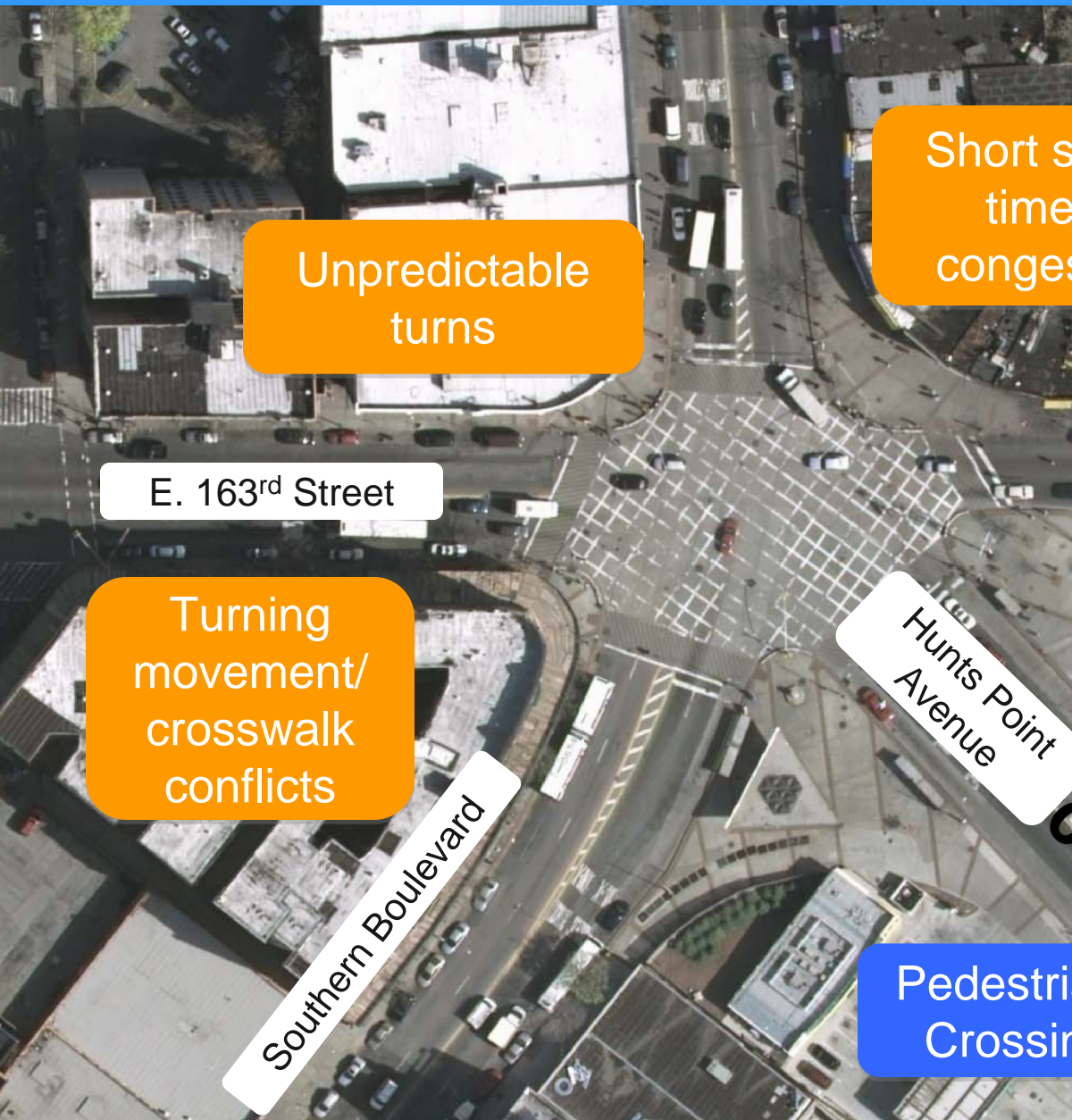
Crames Square - Crossroads

Transit
Hub

Vehicle &
pedestrian
conflicts



Crames Square – Existing Conditions



Unpredictable
turns

E. 163rd Street

Turning
movement/
crosswalk
conflicts

Southern Boulevard

Hunts Point
Avenue

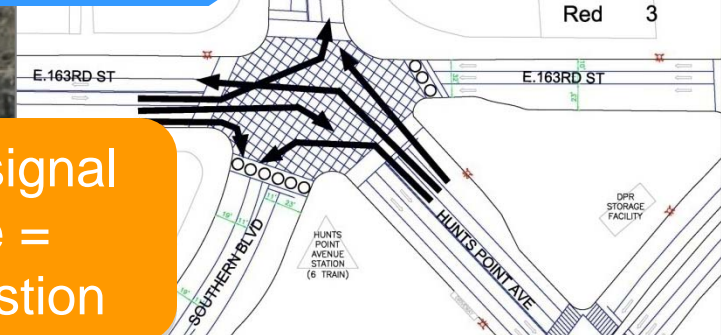
Short signal
time =
congestion

Pedestrian
Crossing

Vehicle
Movements

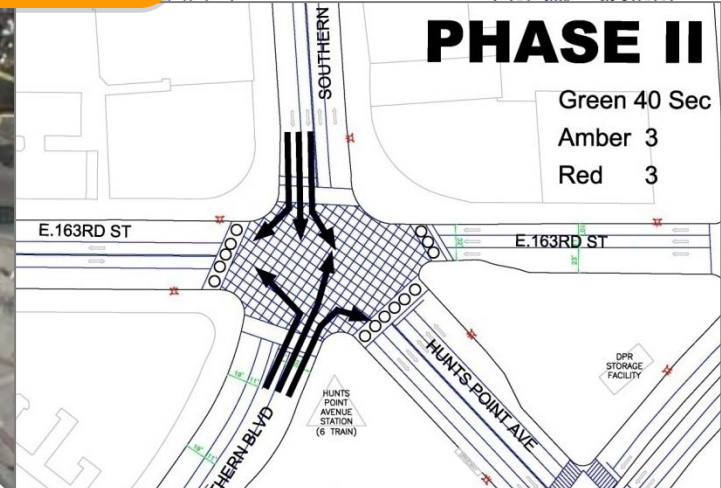
PHASE I

Green	30	Sec
Amber	3	
Red	3	



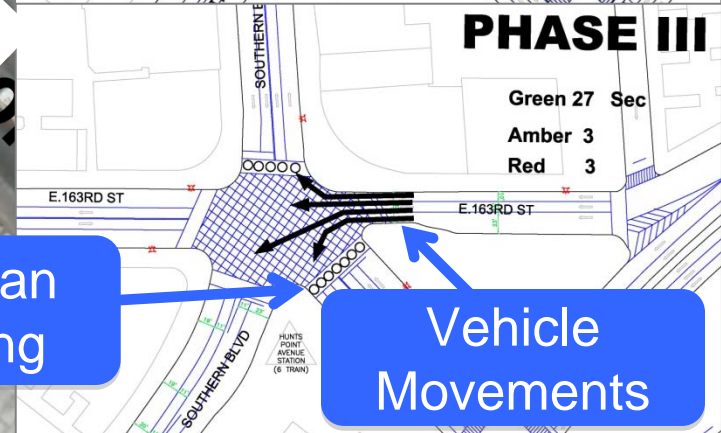
PHASE II

Green	40	Sec
Amber	3	
Red	3	



PHASE III

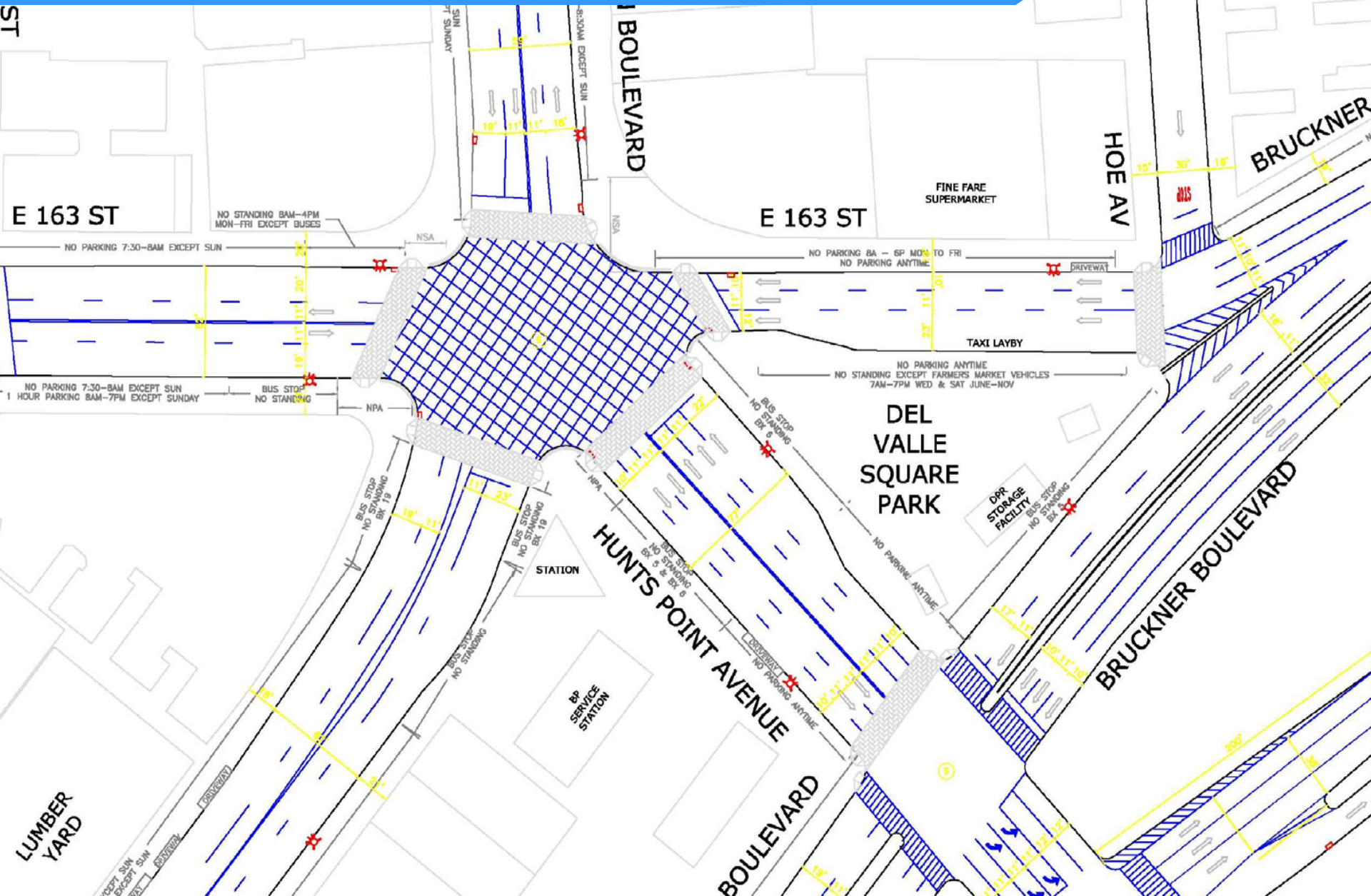
Green	27	Sec
Amber	3	
Red	3	



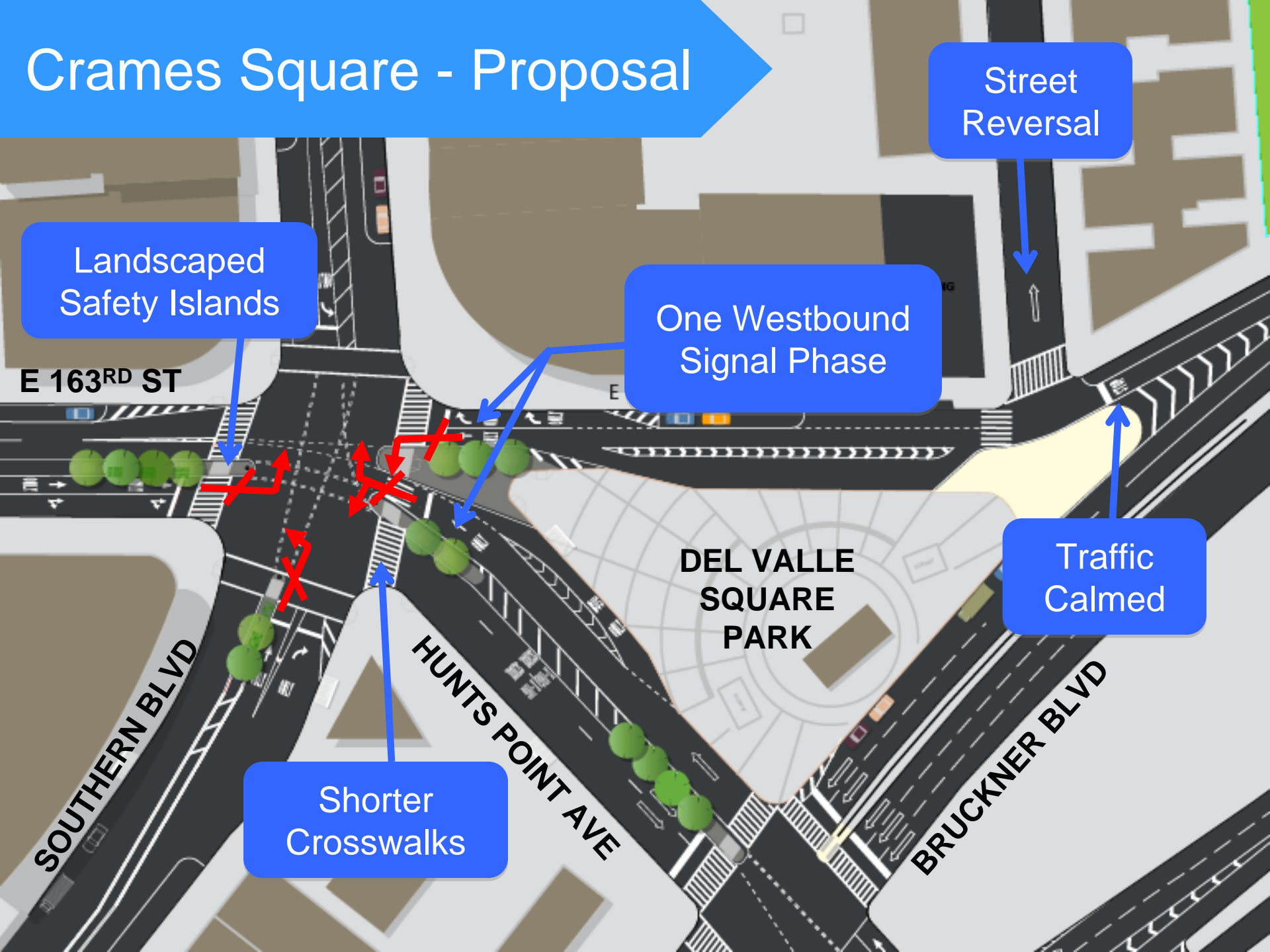
Crames Square - Existing Conditions

The map illustrates the existing conditions of Crames Square, showing a network of streets and various land use zones. Key features include:

- Streets:** E 163 St, Bruckner Boulevard, and Hunts Point Avenue are the primary thoroughfares. Other streets shown include E 164 St, E 165 St, and E 166 St.
- Landmarks and Buildings:** Del Valle Square Park is a central green space. Fine Fare Supermarket is located near the intersection of E 163 St and Bruckner Boulevard. A bus station is situated near the intersection of E 163 St and Hunts Point Avenue.
- Traffic Regulations:** The map specifies various parking and standing rules. For example, along E 163 St, there are 'NO PARKING 7:30-8AM EXCEPT SUN' and 'NO STANDING 8AM-4PM MON-FRI EXCEPT BUSES' zones. Along Bruckner Boulevard, there are 'NO PARKING ANYTIME' and 'NO STANDING EXCEPT FARMERS MARKET VEHICLES 7AM-7PM WED & SAT JUNE-NOV' zones.
- Bus Stops:** Several bus stops are marked with 'NO STANDING' and 'NO PARKING' zones. These include stops on E 163 St, Bruckner Boulevard, and Hunts Point Avenue.
- Dimensions and Distances:** The map includes numerous dimensions for various areas and street widths, such as 10', 15', 20', 25', 30', 35', 40', 45', 50', 55', 60', 65', 70', 75', 80', 85', 90', 95', 100', 105', 110', 115', 120', 125', 130', 135', 140', 145', 150', 155', 160', 165', 170', 175', 180', 185', 190', 195', 200', 205', 210', 215', 220', 225', 230', 235', 240', 245', 250', 255', 260', 265', 270', 275', 280', 285', 290', 295', 300', 305', 310', 315', 320', 325', 330', 335', 340', 345', 350', 355', 360', 365', 370', 375', 380', 385', 390', 395', 400', 405', 410', 415', 420', 425', 430', 435', 440', 445', 450', 455', 460', 465', 470', 475', 480', 485', 490', 495', 500', 505', 510', 515', 520', 525', 530', 535', 540', 545', 550', 555', 560', 565', 570', 575', 580', 585', 590', 595', 600', 605', 610', 615', 620', 625', 630', 635', 640', 645', 650', 655', 660', 665', 670', 675', 680', 685', 690', 695', 700', 705', 710', 715', 720', 725', 730', 735', 740', 745', 750', 755', 760', 765', 770', 775', 780', 785', 790', 795', 800', 805', 810', 815', 820', 825', 830', 835', 840', 845', 850', 855', 860', 865', 870', 875', 880', 885', 890', 895', 900', 905', 910', 915', 920', 925', 930', 935', 940', 945', 950', 955', 960', 965', 970', 975', 980', 985', 990', 995', 1000'.
- North Arrow:** A north arrow is located in the top right corner of the map.



Crames Square - Proposal



Street
Reversal

Landscaped
Safety Islands

One Westbound
Signal Phase

Traffic
Calmed

Shorter
Crosswalks

DEL VALLE
SQUARE
PARK

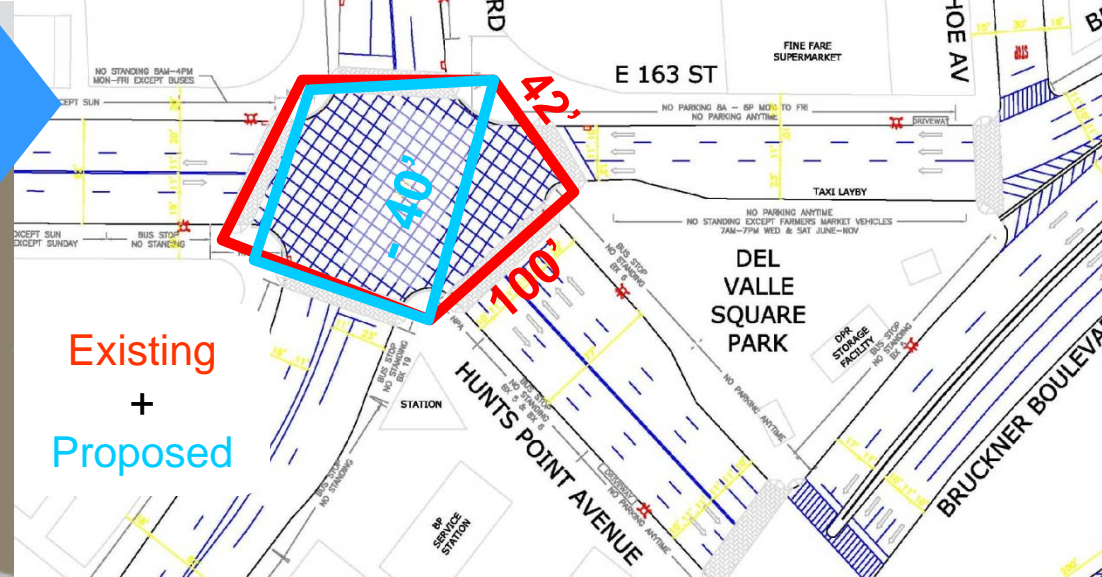
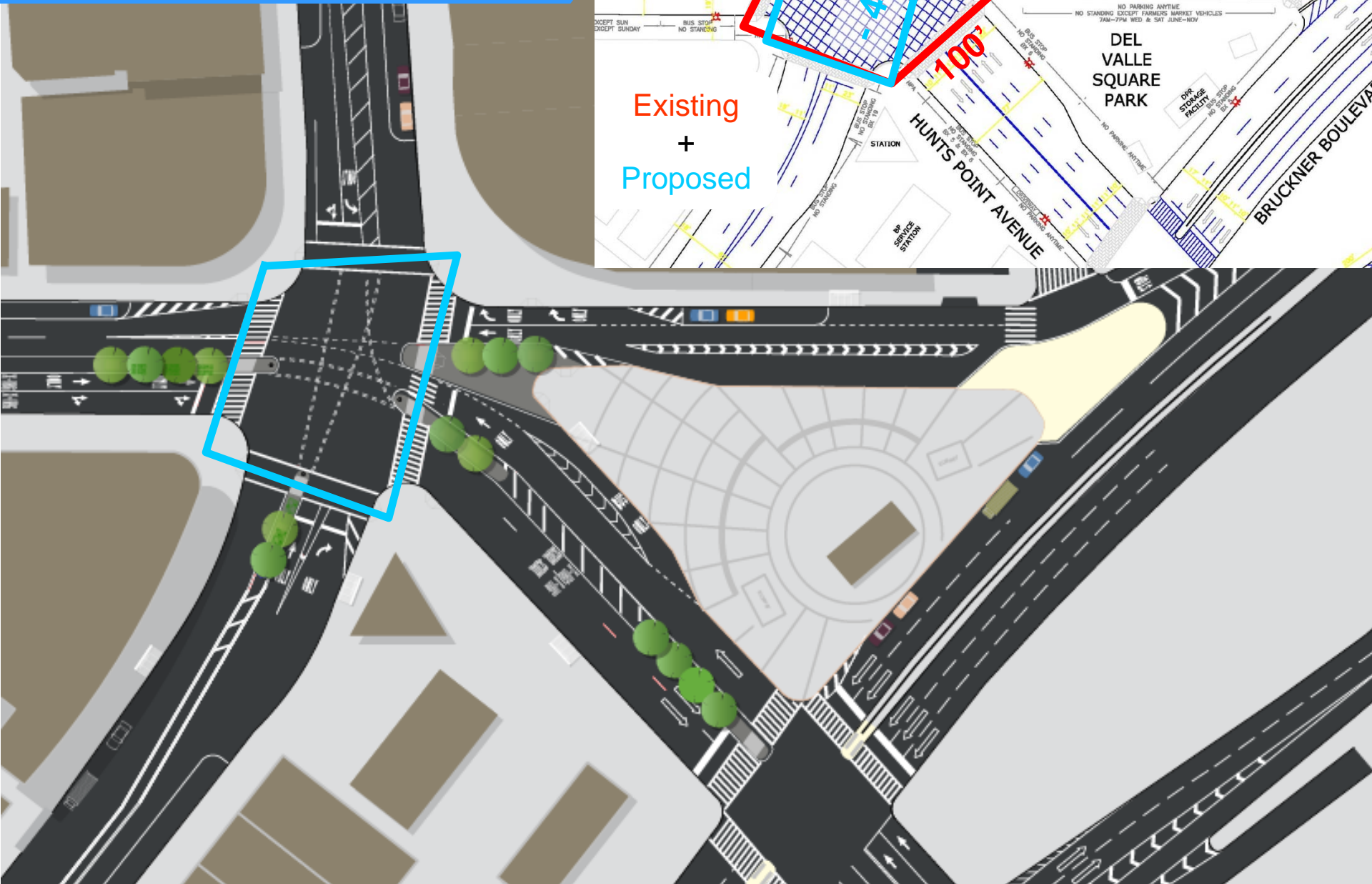
E 163RD ST

SOUTHERN BLVD

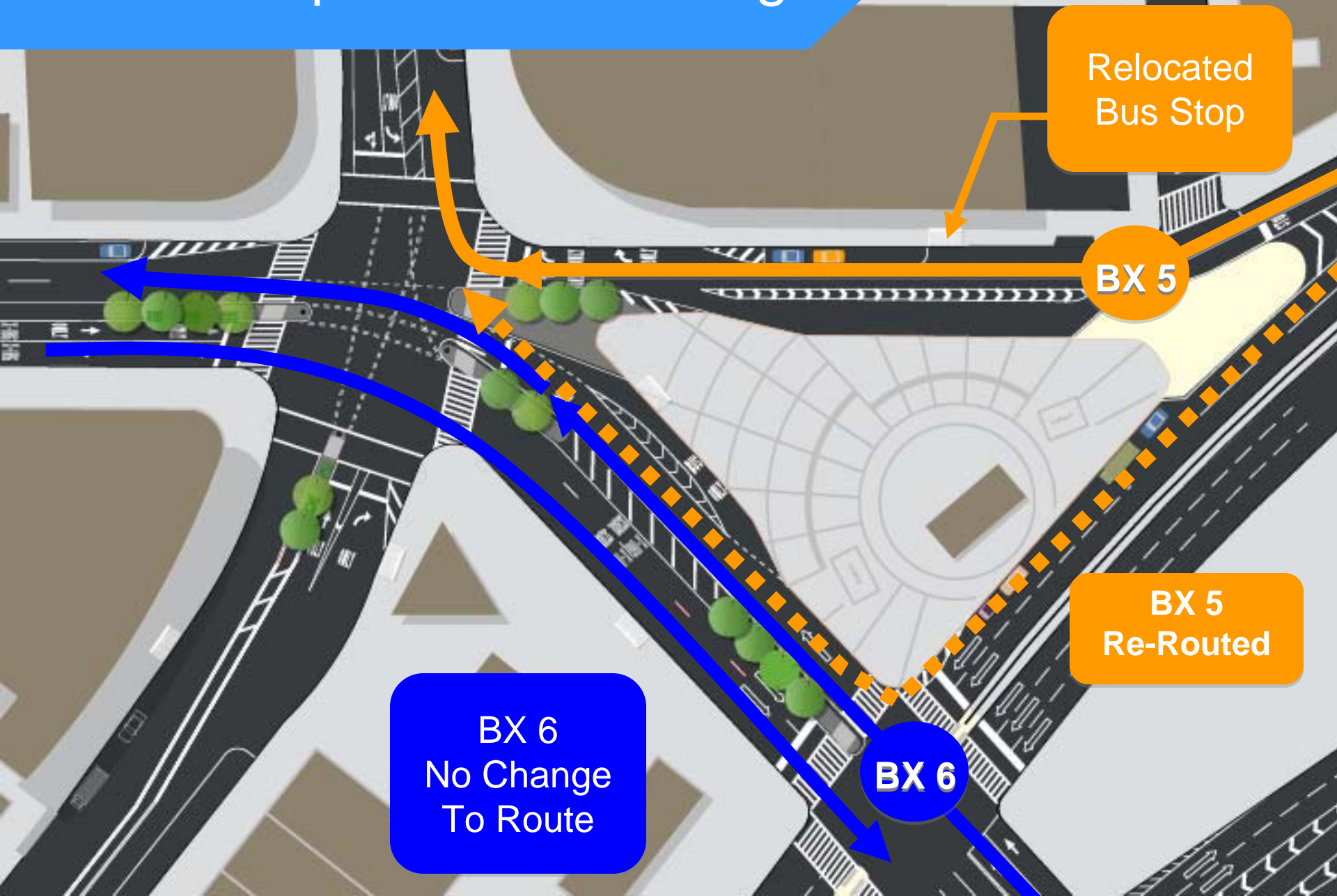
HUNTS POINT AVE

BRUCKNER BLVD

Crames Crosswalks



Crames Square - Bus Changes



Relocated
Bus Stop

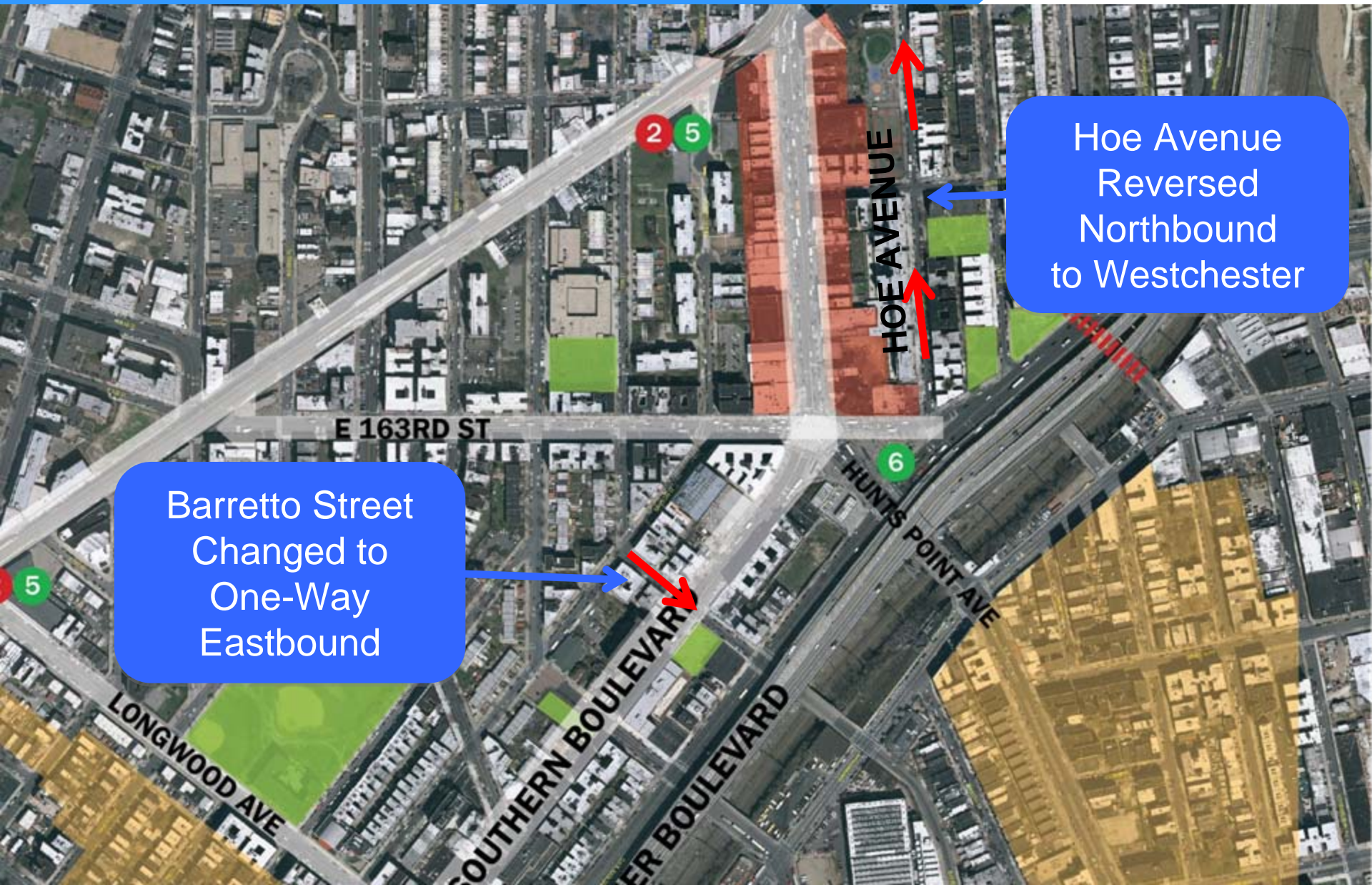
BX 5

BX 5
Re-Routed

BX 6
No Change
To Route

BX 6

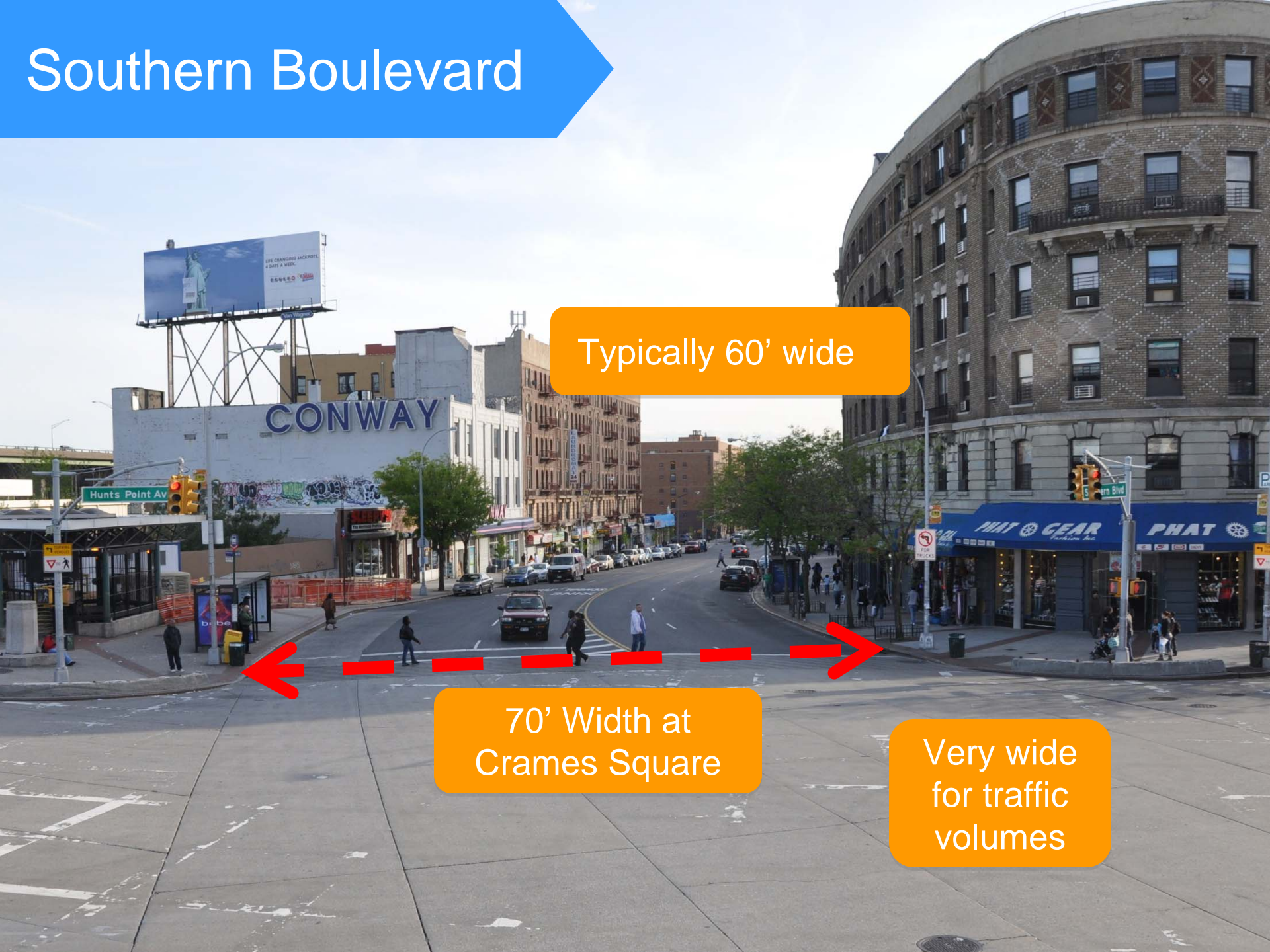
Proposed Street Direction Changes



Barretto Street
Changed to
One-Way
Eastbound

Hoe Avenue
Reversed
Northbound
to Westchester

Southern Boulevard



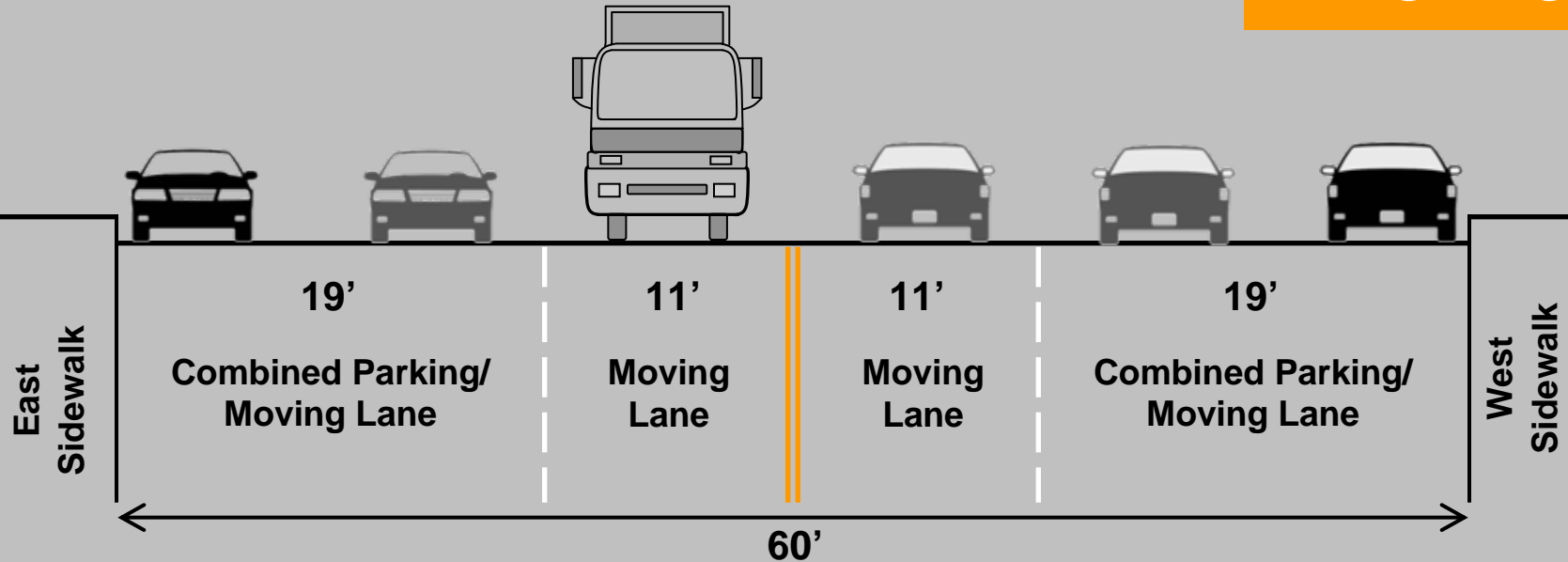
Typically 60' wide

70' Width at
Crames Square

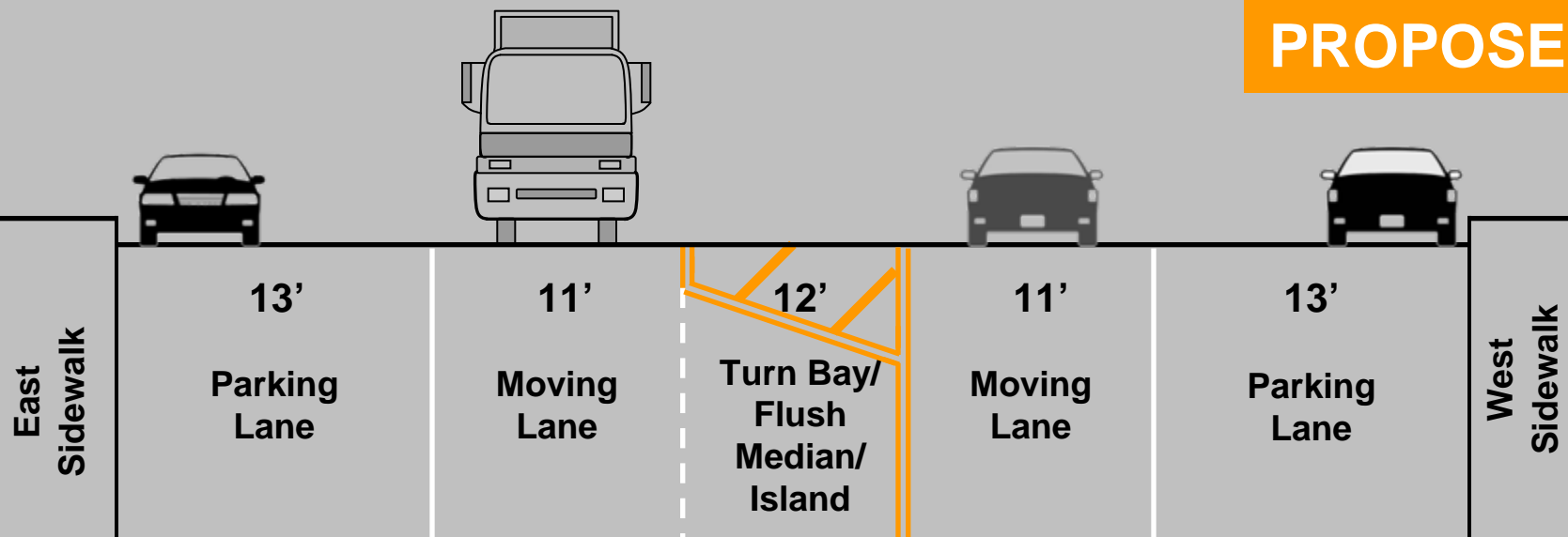
Very wide
for traffic
volumes

Southern Boulevard

EXISTING



PROPOSED

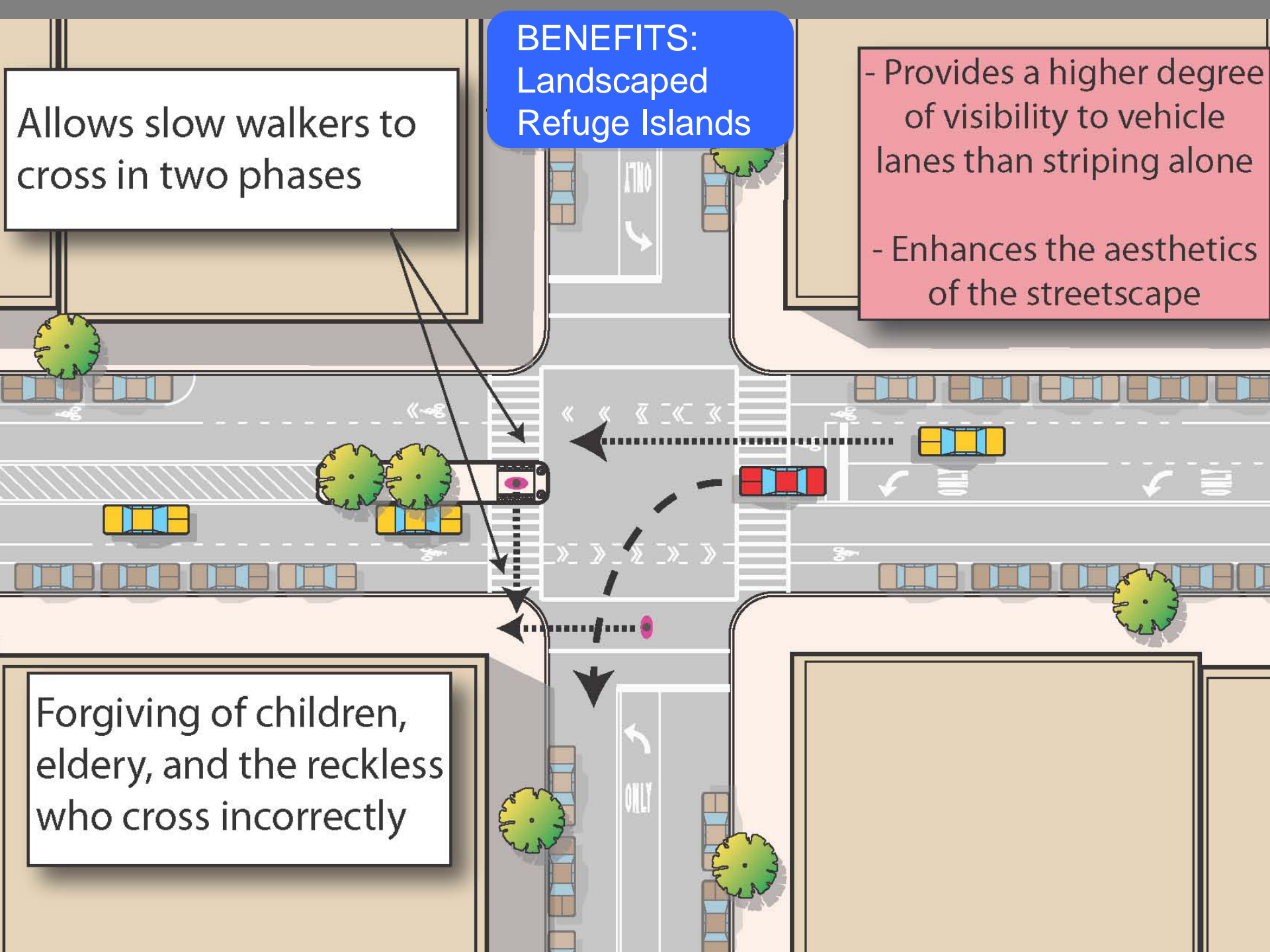


BENEFITS: Landscaped Refuge Islands

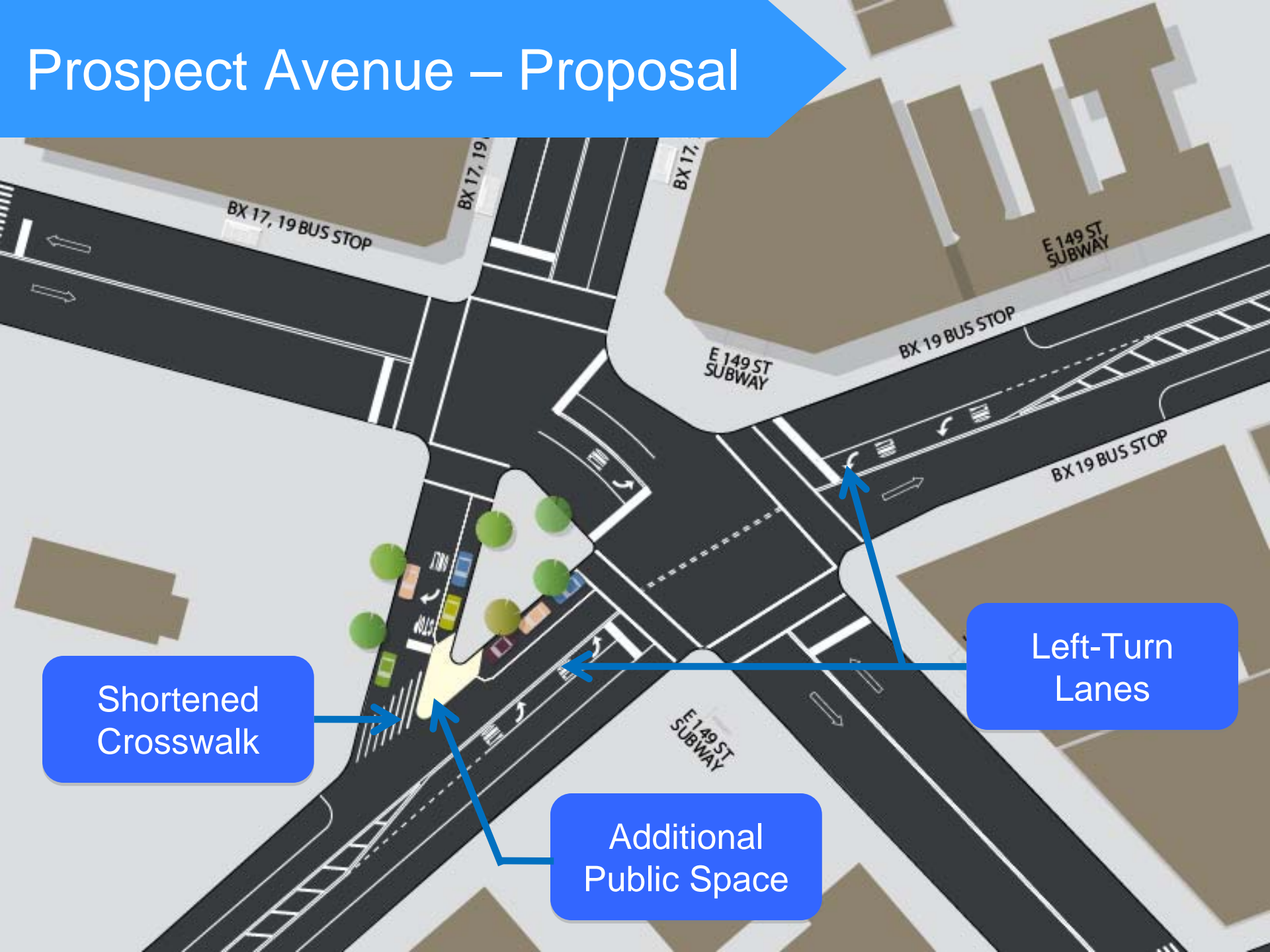
- Provides a higher degree of visibility to vehicle lanes than striping alone
- Enhances the aesthetics of the streetscape

Allows slow walkers to cross in two phases

Forgiving of children, elderly, and the reckless who cross incorrectly



Prospect Avenue – Proposal

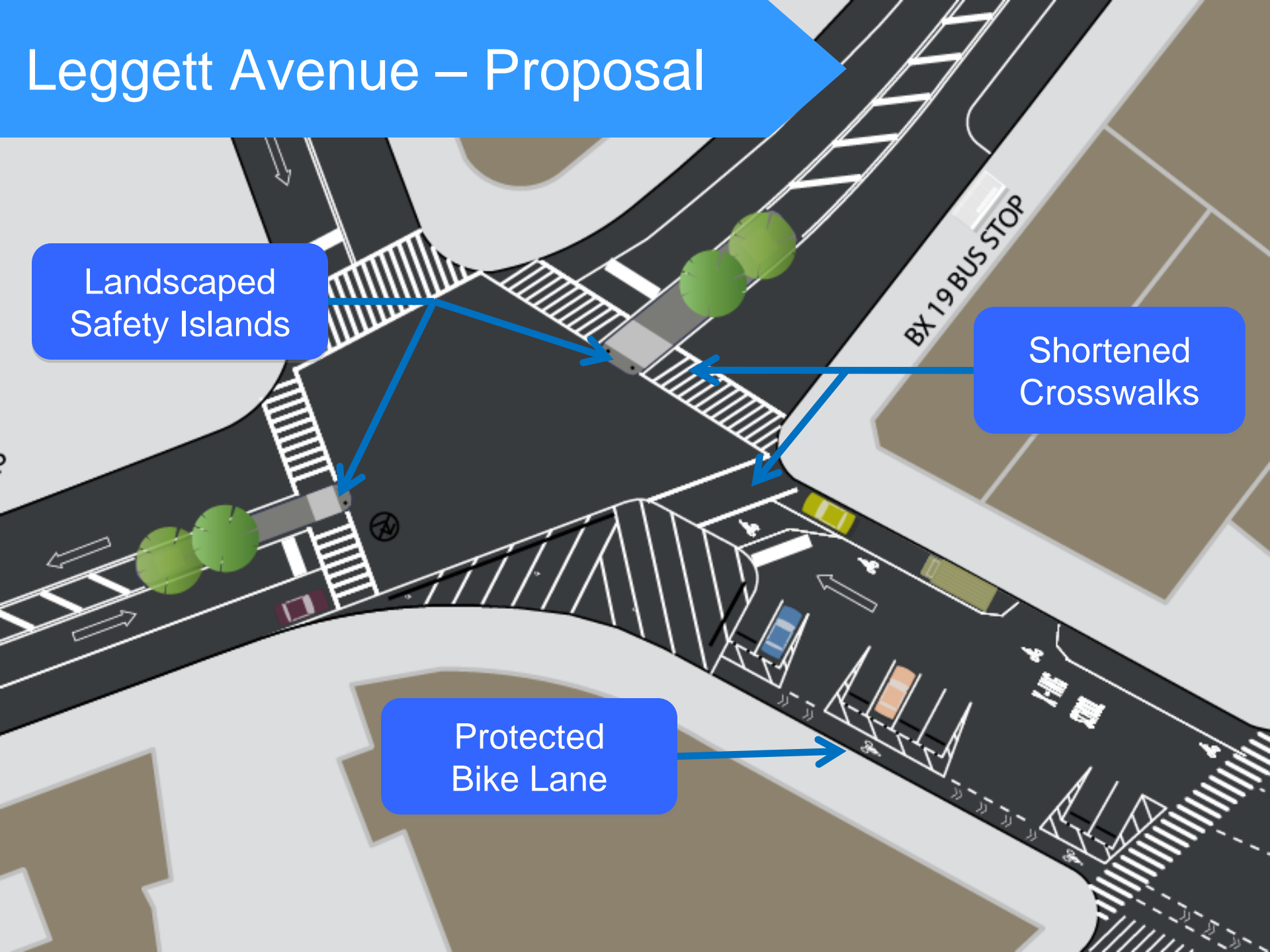


Shortened
Crosswalk

Additional
Public Space

Left-Turn
Lanes

Leggett Avenue – Proposal



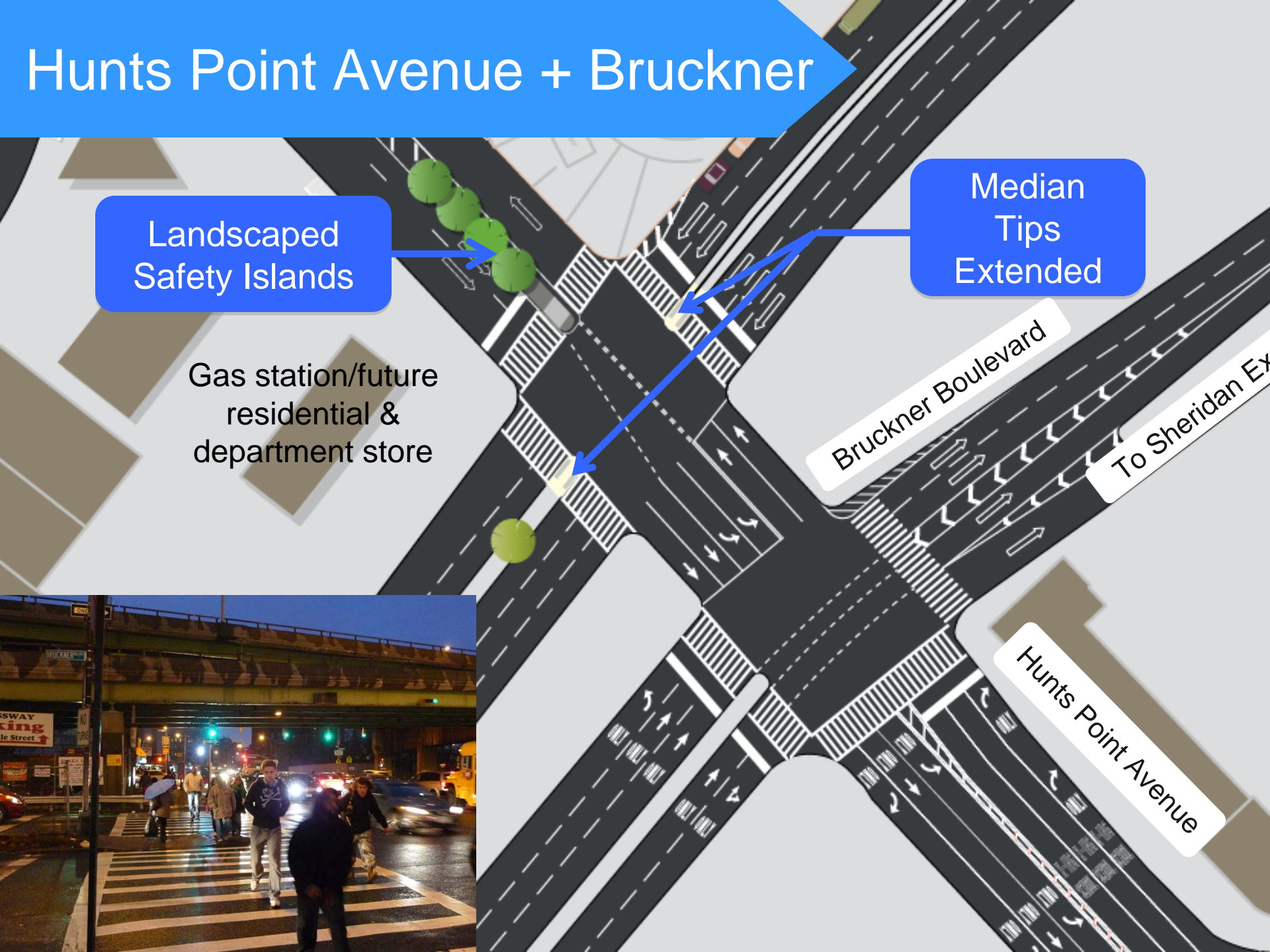
Landscaped
Safety Islands

Shortened
Crosswalks

Protected
Bike Lane

BX 19 BUS STOP

Hunts Point Avenue + Bruckner



www.nyc.gov/dot

Thank
you

