



188TH ST AND 73RD AVE

Presentation to CB8

April 27th, 2017



PROJECT AREA

Background

- Multiple community requests for improvements along 188th St
- DOT is analyzing potential improvements to 188th St circles
- Assemblymember Rozic supports safety improvements to the area
- 188th St and 73rd Ave is a Vision Zero Priority Intersection
- High Crash intersection with 1 pedestrian fatality and 1 severe pedestrian injury

188th St At 73rd Ave, QN				
Injury Summary, 2011-2015 (5 Years)				
	Total Injuries	Severe Injuries	Fatalities	KSI
Pedestrian	9	1	1	2
Bicyclist	0	0	0	0
Motor Vehicle Occupant	17	1	0	1
Total	26	2	1	3

Fatalities, 01/01/2011-1/9/2017 : 1

Source: Fatalities: NYCDOT
Injuries: NYSDOT
KSI: Persons Killed or Severely Injured

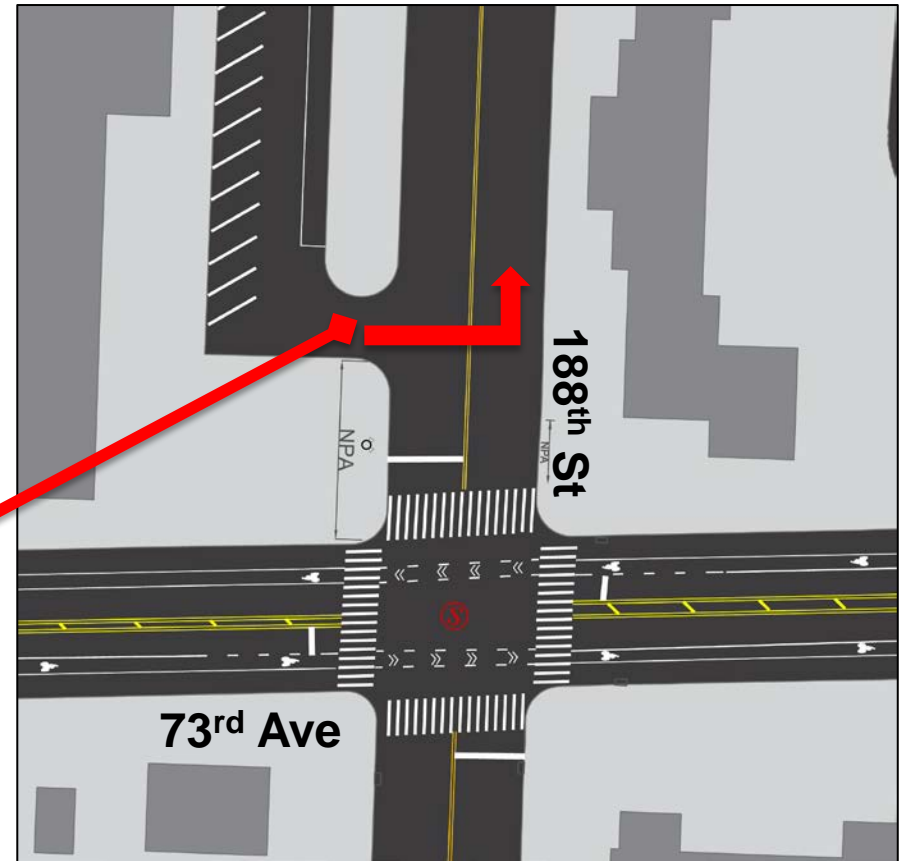


EXISTING CONDITIONS

- 2011 - Pedestrian fatality occurred when vehicle made left turn from parking lot onto northbound 188th St
- Parking lot exit is too close to intersection to safely accommodate left turns

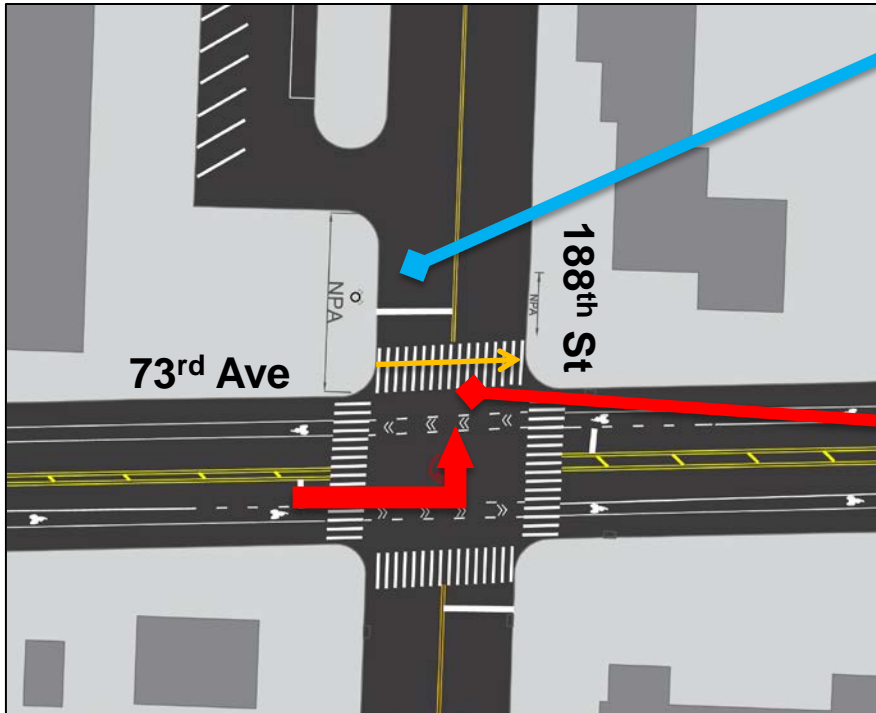


Vehicle turning left out of parking lot



EXISTING CONDITIONS

- Vehicles tend to use excessively wide single south bound lane as two lanes which results in unpredictable turning movements



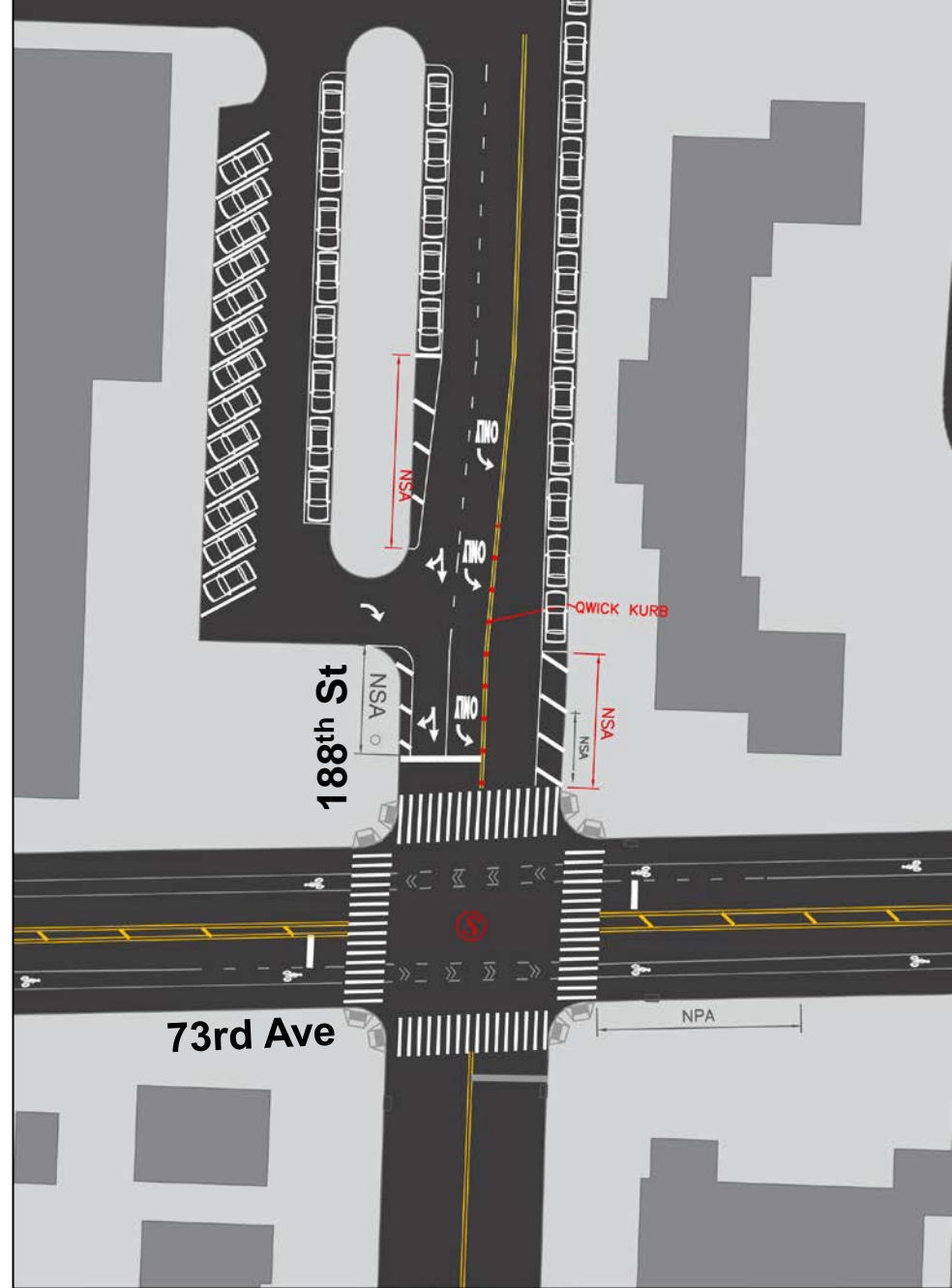
2014 - Pedestrian with baby carriage was severely injured by vehicle making left hand turn from 73rd Ave to 188th St

PROPOSAL

- Install Qwick Kurb to stop left turn out of parking lot and soften southbound left turn onto 73rd Ave
- Mark dedicated left turn lane on the north leg of 188th St
- Three parking spaces will be removed on the west side of 188th St to create dedicated turn lane and one will be removed to expand the existing No Standing Anytime regulation on the northeast corner of 188th St and 73rd Ave

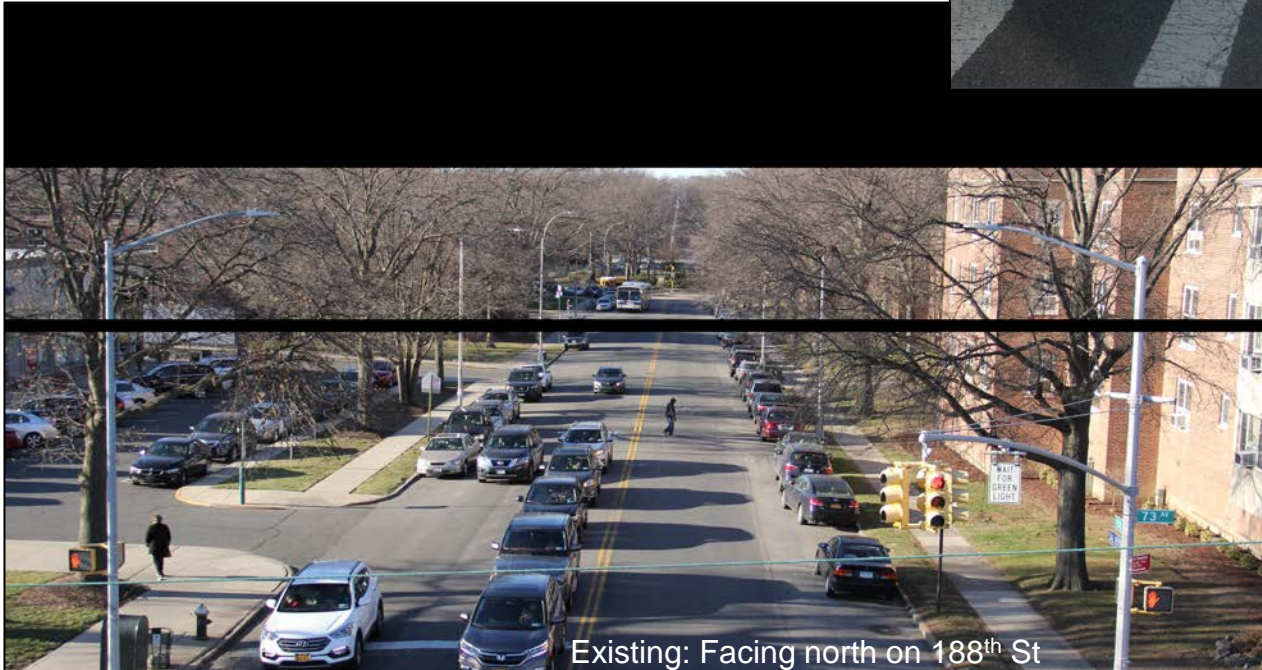


Qwick Kurb Example



BENEFITS

- Safer pedestrian crossings
- Clarifies traffic movements
- Calmed left turn
- Reduces congestion
- Reduces speeding and calms traffic



THANK YOU!

Questions?



NYC DOT



NYC DOT



nyc_dot



NYC DOT