

138th St & 31st Rd

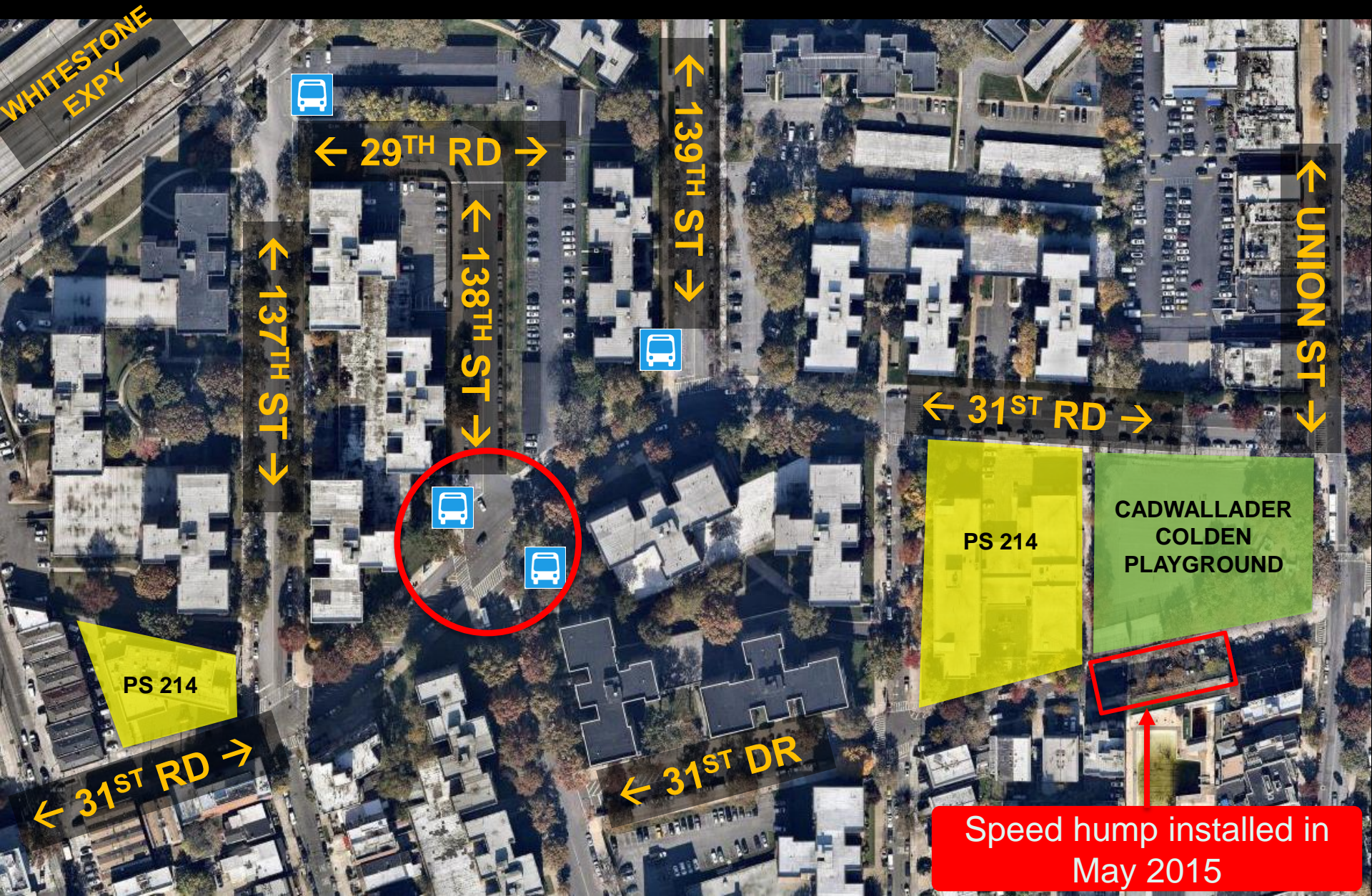
Pedestrian Safety Improvements

2016



Project Area

- Residential area with PS 214, PS 242 and playground
- Access to Q34, Q43, QM20 and QM2 buses



Project Background

- Request from the community for safety improvements following all-way-stop denial
- Bike fatality at intersection in 2010
- Vision Zero Priority Area

138th St At 31st Rd, QN

Injury Summary, 2010-2014 (5 Years)

	Total Injuries	Severe Injuries	Fatalities	KSI
Pedestrian	4	0	0	0
Bicyclist	1	1	0	1
Motor Vehicle Occupant	2	0	0	0
Total	7	1	0	1

Fatalities, 01/01/2010-12/31/2016 : None

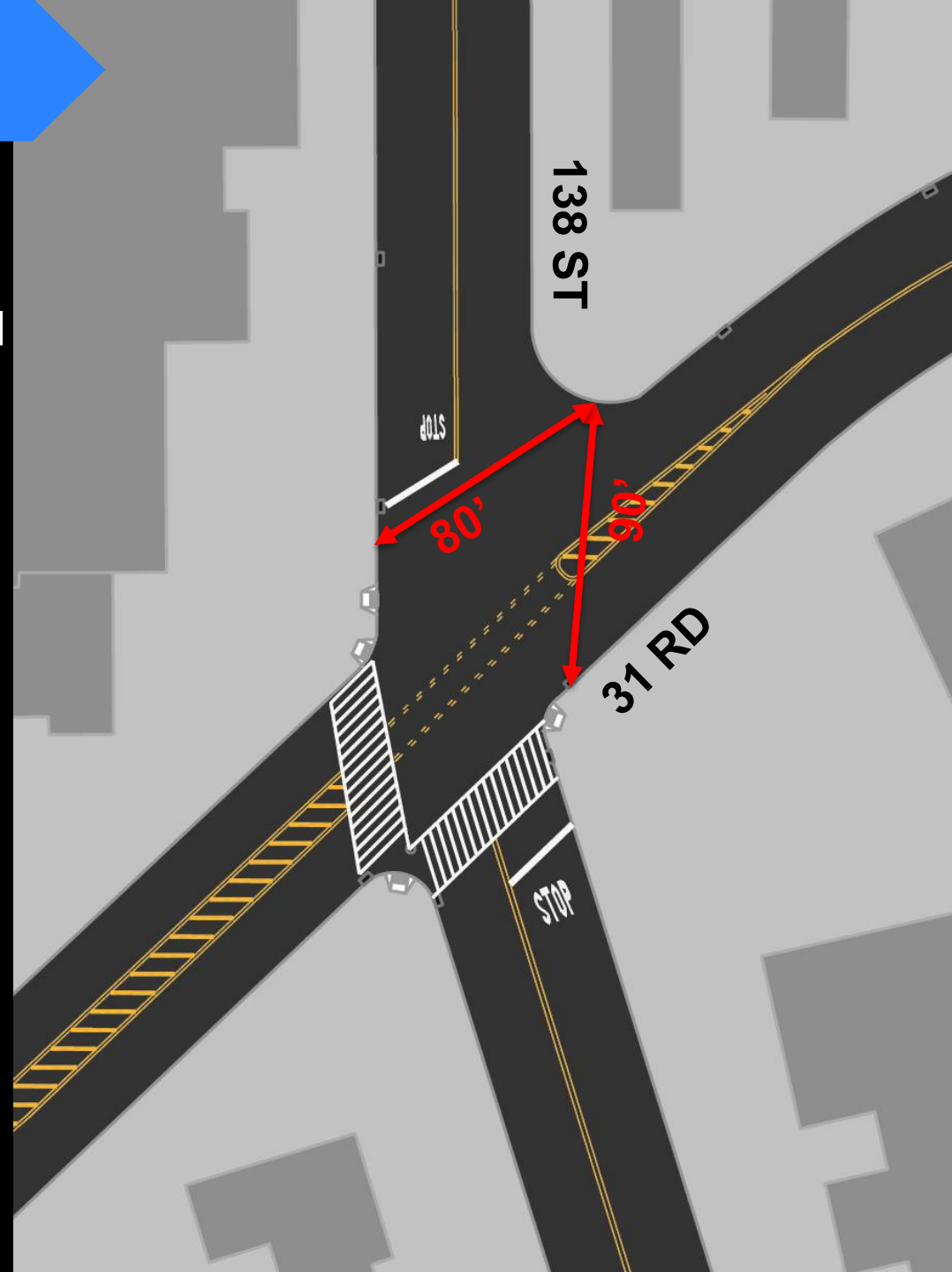
Source: Fatalities: NYCDOT
Injuries: NYSDOT
KSI: Persons Killed or Severely Injured



138th St and 31st Rd looking west

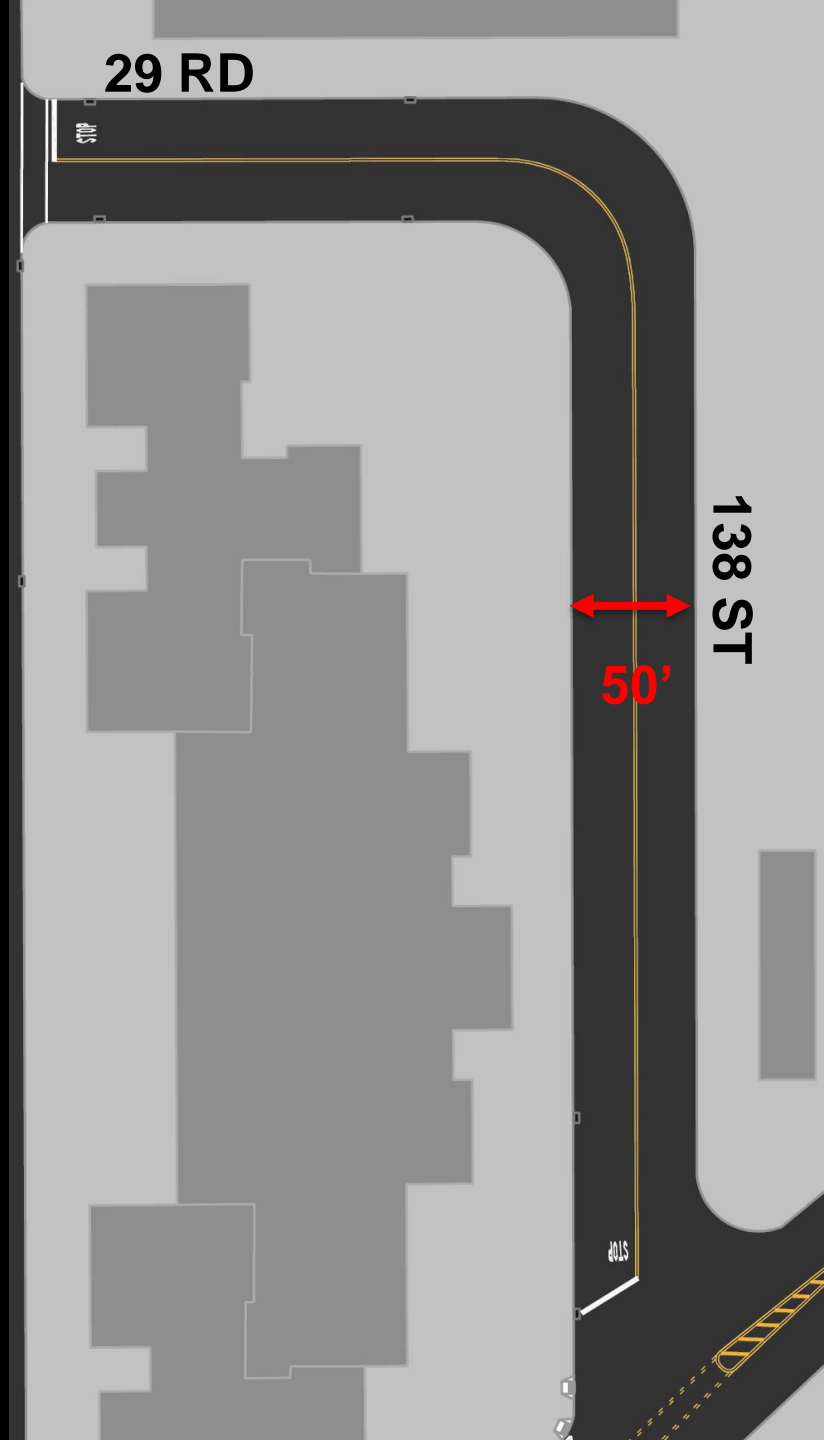
Existing Conditions

- Unmarked crosswalks
- Long crossing distances
- One uncontrolled marked school crosswalk



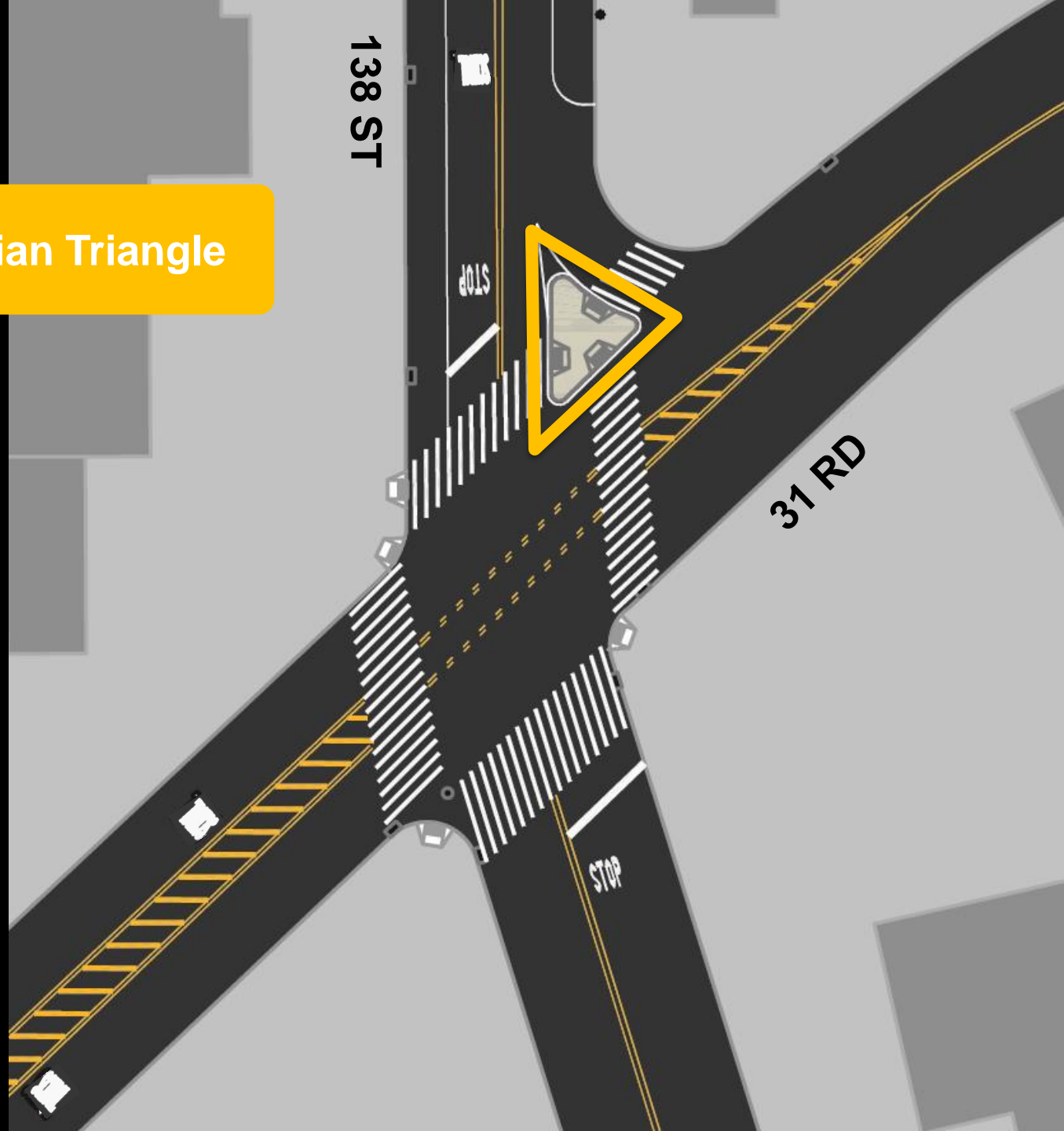
Existing Conditions

- Wide travel lanes encourage speeding



Proposal

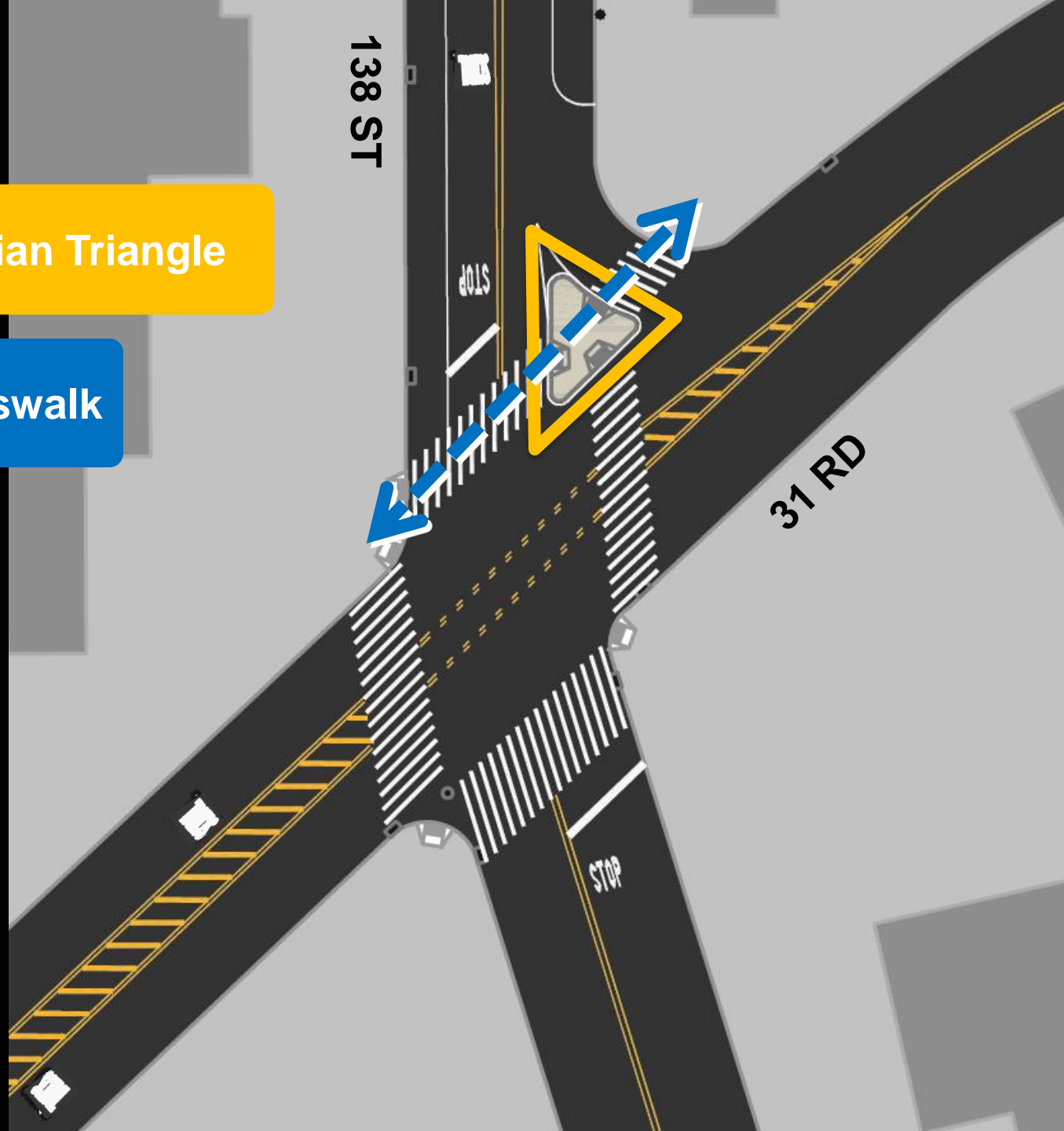
Concrete Pedestrian Triangle



Proposal

Concrete Pedestrian Triangle

Mark missing crosswalk

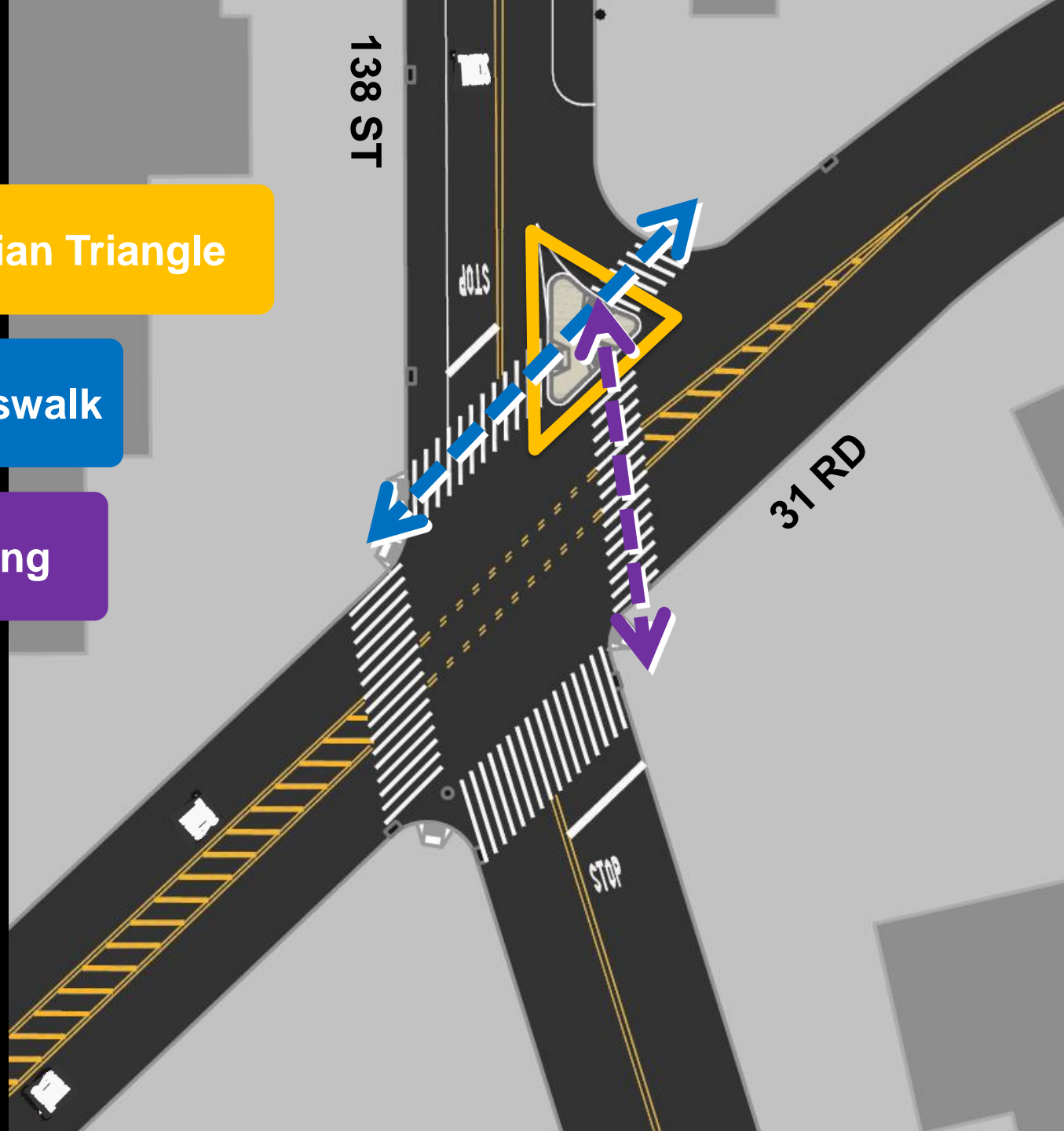


Proposal

Concrete Pedestrian Triangle

Mark missing crosswalk

Enhanced Crossing



Enhanced Crossing Example

W 155th St & St Nicholas Pl, Manhattan



Pedestrian Warning Signs

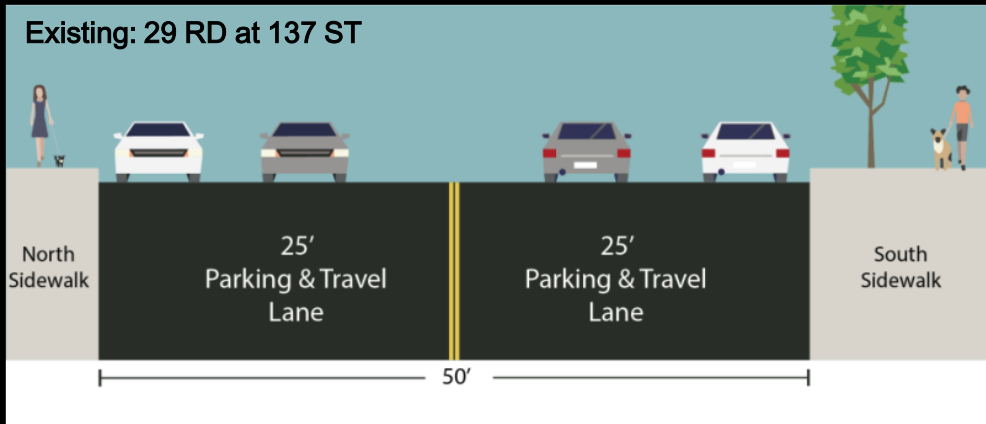


Proposal

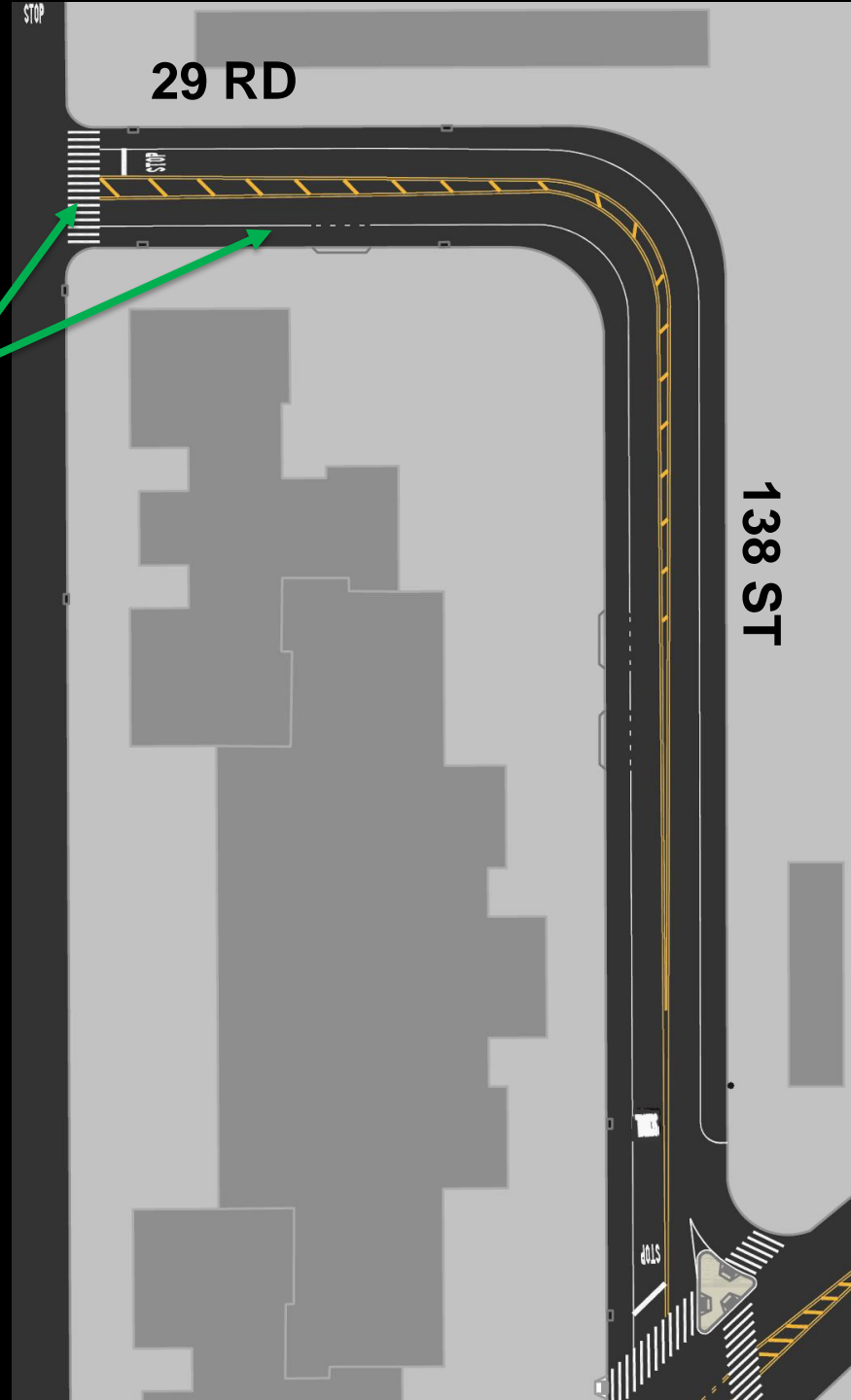
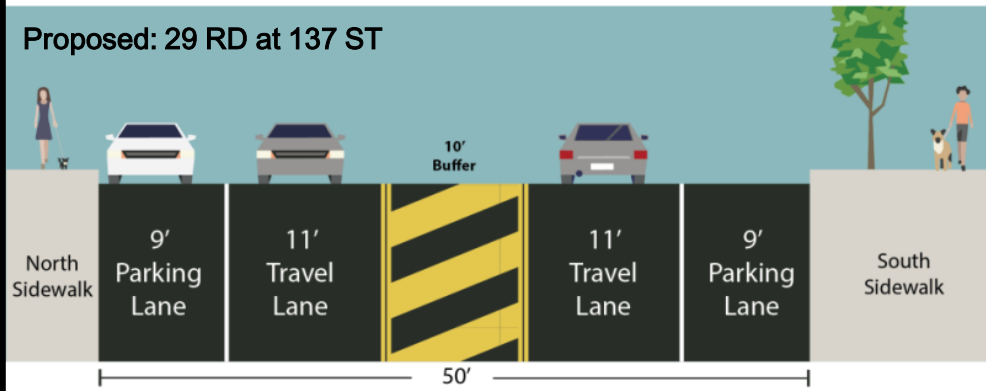
Flush Median and Parking Lane Stripes

- Visually narrows corridor to slow vehicles

Existing: 29 RD at 137 ST



Proposed: 29 RD at 137 ST



Summary



- Mark new high-visibility crosswalks at 138th St and 31st Rd, 137th St and 29th Rd
- New enhanced crossing at 138th St and 31st Rd
- Add concrete triangle at intersection of 138th St and 31st Rd with NSA regulation at corner
- Paint parking lane stripes and channelized median on 138th St/29th Rd between 31st Rd and 137th St

www.nyc.gov/dot

Thank
You