

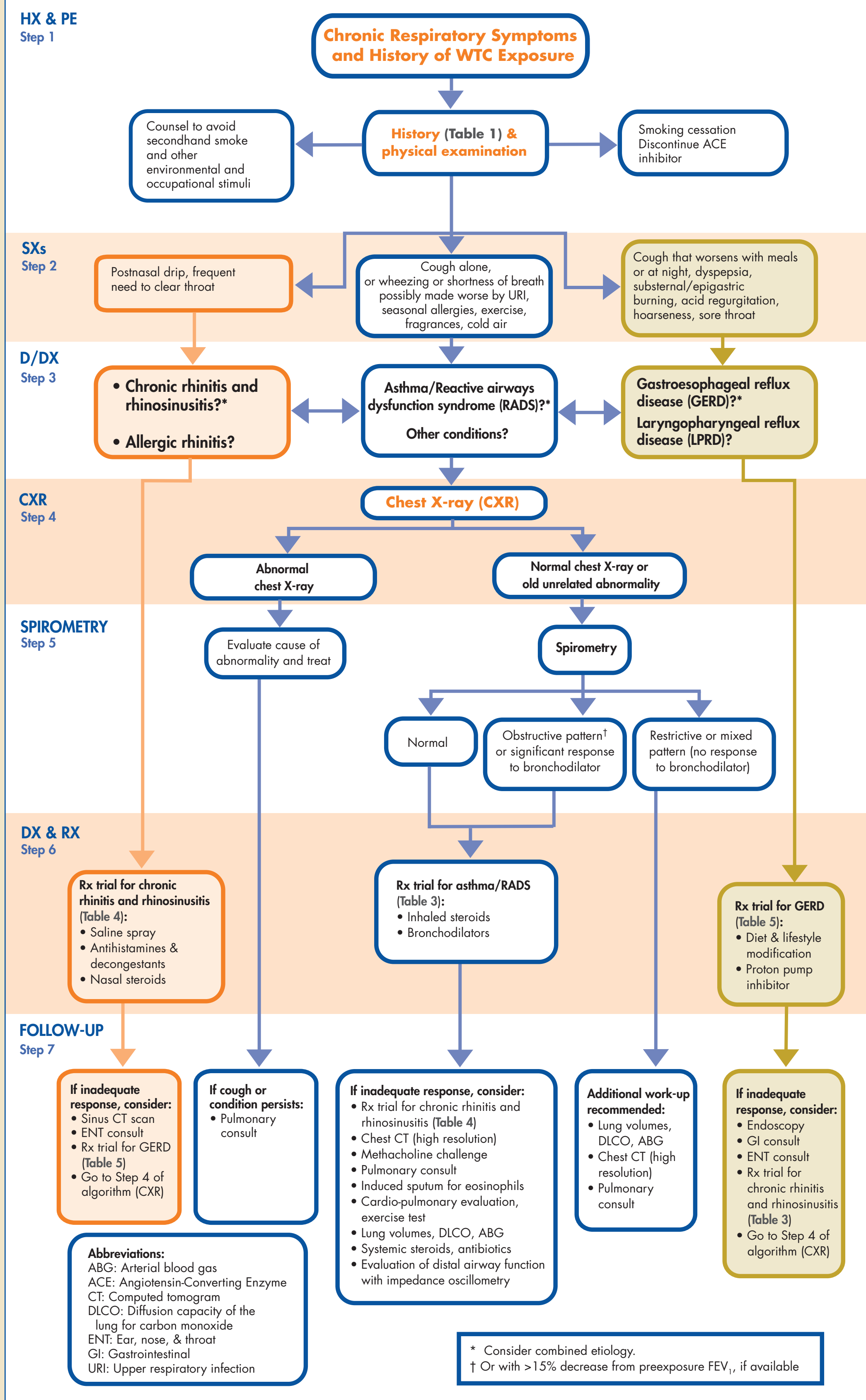
MANAGEMENT OF WTC-ASSOCIATED ILLNESSES

Physical and mental health problems in people exposed to the disaster are often interrelated and require coordinated evaluation and treatment.

FIGURE 1

The algorithm provides guidance for diagnosis, treatment, management, and referral to a World Trade Center monitoring or treatment program, or to another specialist (e.g. otolaryngologist, pulmonologist, cardiologist, radiologist, or gastroenterologist). Often, two or more conditions coexist, and these conditions must be treated simultaneously to improve or resolve the respiratory symptoms.⁸⁰

APPROACH TO THE PATIENT WITH CHRONIC RESPIRATORY SYMPTOMS AND A HISTORY OF WTC-RELATED EXPOSURE



MEDICAL RESOURCES

NEW YORK CITY 9/11 HEALTH INFORMATION
www.nyc.gov/9-11healthinfo

TREATMENT PROGRAM

Offering free services and medications for people with WTC-related symptoms

For residents, area workers, and students:

WTC Environmental Health Center at Bellevue Hospital Center, Gouverneur Health Care Services and Elmhurst Hospital Center 877-982-0107

MEDICAL MONITORING AND TREATMENT PROGRAMS

For rescue and recovery workers and volunteers:

Mount Sinai Consortium: WTC Medical Monitoring and Treatment Program 888-702-0630

For active and retired FDNY and EMS members who participated in the 9/11 rescue and recovery effort:

FDNY WTC Medical Monitoring and Treatment Program: 718-999-1858

PEDIATRICS

For pediatric (but not WTC-specific) guidelines:

American Academy of Pediatrics

www.aap.org/topics.html

WORKERS' COMPENSATION

www.wcb.state.ny.us

• Call 877-632-4996 to request a WTC-12 form or verify your registration.

REGISTRIES

NY State Cancer Registry

The New York State Department of Health is phasing in physician reporting of cancers diagnosed and/or treated in ambulatory settings. Call 518-474-2255.

NY State Occupational Lung Disease Registry

For occupational lung disease reporting forms, call 866-807-2130 or go to: www.health.state.ny.us/nysdoh/lung/lung.htm.

NY State Mortality Registry

The New York State Department of Health is collecting data on all WTC responder deaths (people who worked on the WTC site from 9/11 to 6/30/02, including Staten Island/barge and morgue workers). Contact Kitty Gelberg, Ph.D., Flanigan Square Room 230, 547 River Street, Troy, NY 12180, 518-402-7900.

ANNUAL 9/11 RESOURCE GUIDE

Visit www.nyc.gov/9-11healthinfo or call 311.

MENTAL HEALTH RESOURCES

LIFENET

• NYC DOHMH 24-hour, 7-days-a-week crisis hotline and information and referral network
 English: 800-Lifenet/800-543-3638
 Spanish: 877-Ayudese/877-298-3373
 Chinese (Asian Lifenet): 877-990-8585
 Other Languages: 800-Lifenet/800-543-3638
 TTY hard of hearing: 212-982-5284
www.mhaofnyc.org

NYC 9/11 Benefit Program for Mental Health & Substance Use Services

• An insurance-like benefit to help cover September 11 mental health and substance use treatment costs for NYC residents 877-737-1164
www.nyc.gov/9-11mentalhealth

American Psychiatric Association, APA Answer Center

• Referral to a local psychiatrist 888-357-7924
www.healthyminds.org/locateapsychiatrist.cfm

American Psychological Association

• Telephone and online psychologist locator service 800-964-2000
www.apahelpcenter.org

New York State Office of Alcoholism and Substance Abuse Services (OASAS)

800-522-5353 or 518-485-1768
www.oasas.state.ny.us

Substance Abuse and Mental Health Services Administration

• National Drug and Alcohol Treatment Referral Routing Service 800-662-4357
www.findtreatment.samhsa.gov

Alcoholics Anonymous (AA) World Services, Inc.

212-870-3400
www.aa.org

National Institute on Alcohol Abuse and Alcoholism (NIAAA)

301-443-3860
www.niaaa.nih.gov