

EXECUTIVE SUMMARY OF THE ANNUAL SUMMARY OF VITAL STATISTICS

EXECUTIVE SUMMARY, 2009 A DECADE OF VITAL STATISTICS IN NEW YORK CITY

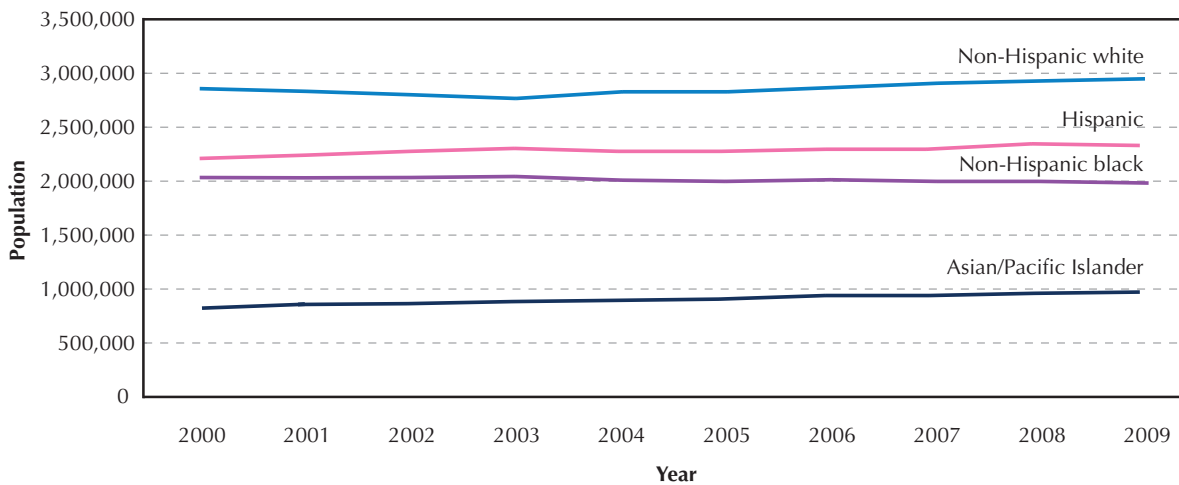
- The 2009 New York City death rate reached an historic low of 6.3 per 1,000 population, a 17% decrease in 10 years.
- The 2009 infant mortality rate is now 5.3 infant deaths per 1,000 live births, another historic low and down 21% in the past 10 years.
- 126,774 babies were born in New York City, a 1.7% increase in the number of births since 2000. During this time, the overall population of New York City has grown; therefore, the birth rate has actually decreased 3.8%.
- Teens accounted for 6.2% of live births in 2009, down from 8.4% in 2000.
- As of 2008, the most recent year for which data are available, New Yorkers had an average life expectancy of 79.4 years, which is on par with the previous year and a gain of 26 months since 1999. This is the highest life expectancy ever recorded in New York City.

The *Annual Summary of Vital Statistics, 2009*, from the New York City Department of Health and Mental Hygiene, contains the most current New York City vital events data. The *Summary* encapsulates the current health of New York City, providing public health practitioners and researchers with information on death, birth and termination of pregnancy events occurring in the city. These events may occur in both residents and non-residents, unless otherwise indicated. This information is used to establish and monitor the city's health policies, including the objectives of Take Care New York, the Health Department's strategic plan to help New Yorkers live longer and healthier lives.

This Executive Summary of the *Annual Summary of Vital Statistics* highlights key changes in New York City's vital statistics over the past decade. Unless otherwise noted, all rates are crude and the data are for 2009. For more information on New York City vital statistics data, please visit www.nyc.gov/vitalstats

POPULATION IN NEW YORK CITY

Population* by Ethnicity, New York City, 2000–2009

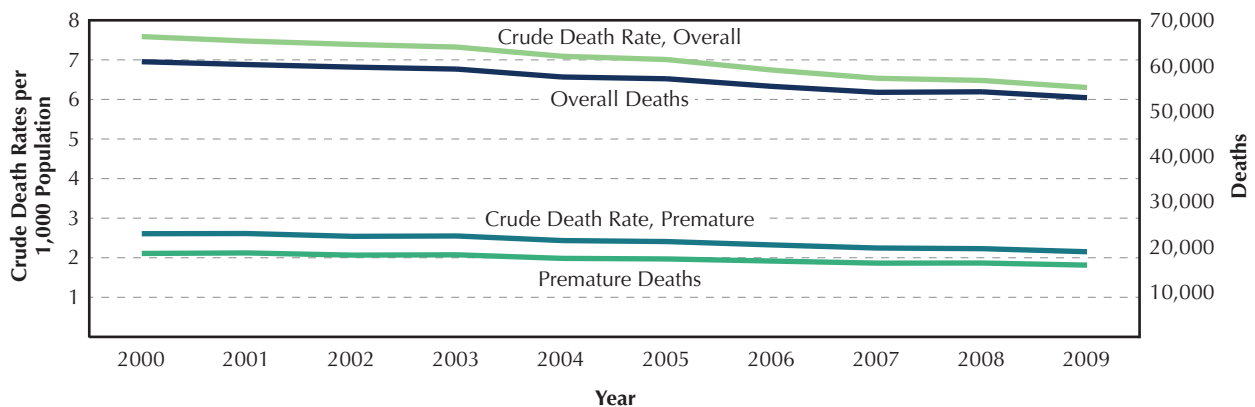


*Data Source: Population are pre-challenged U.S. Census Bureau's estimates as of July 1 of each year.

- New York City's (NYC) population — 8.4 million people — has grown by 5% since 2000, with nearly 400,000 more New Yorkers living in the city in 2009.
 - Asian and Pacific Islanders are the fastest growing racial/ethnic subgroup in the City, increasing by one fifth (21%), despite being the smallest (about 12% of all New Yorkers).
 - Hispanics are the second largest subgroup in the City (28% of all New Yorkers) and the population has grown 6% since 2000 to 2.3 million.
 - The largest subgroup of New Yorkers — Non-Hispanic whites — makes up more than one third of the population (36%) but has grown only 4% since 2000.
 - Non-Hispanic blacks, who make up 23% of all New Yorkers, are the only subgroup to decrease slightly in population (3%) since 2000.

DEATHS IN NEW YORK CITY

Numbers of Deaths and Crude Death Rates, Overall and Premature (Age < 65 Years), New York City, 2000–2009



- In 2009, the mean age at death was 71.9 years.
- The death rate overall in 2009 reached an historic low of 6.3 deaths per 1,000 population, a 17% decline from 2000 and a 2.7% decline from 2008.
- Premature deaths (before age 65) accounted for nearly 30% of all deaths in New York City. The rate of 2.2 per 1,000 population in 2009 is a decrease of 18% from 2000, and 3% from 2008.

DEATHS IN NEW YORK CITY

LEADING CAUSES OF DEATH

Top 10 Leading Causes of Death in NYC – 2000, 2008 and 2009

Cause	2009 (most recent year)		2008 (1 year prior)			2000 (10 years ago)		
	Rank	Crude Death Rate per 100,000 Population	Rank	Crude Death Rate per 100,000 Population	Change to 2009 (%)	Rank	Crude Death Rate per 100,000 Population	Change to 2009 (%)
Diseases of the Heart	1	239.4	1	253.4	-5.5	1	309.3	-22.6
Malignant Neoplasms	2	157.1	2	156.0	0.7	2	176.1	-10.8
Influenza and Pneumonia	3	27.1	3	27.5	-1.3	3	28.3	-4.1
Diabetes Mellitus	4	20.1	4	19.6	2.5	6	22.8	-11.7
Chronic Lower Respiratory Diseases	5	18.2	5	19.2	-5.1	7	20.1	-9.3
Cerebrovascular Disease	6	17.3	6	18.1	-4.6	5	24.5	-29.5
Accidents Except Poisoning by Psychoactive Substance	7	12.0	8	12.5	-4.2	8	13.0	-8.3
Essential Hypertension and Hypertensive Renal Disease	8	11.2	9	10.6	5.2		9.8	14.3
Human Immunodeficiency Virus (HIV) Disease	9	11.1	7	12.8	-13.3	4	24.5	-54.6
Use of or Poisoning by Psychoactive Substance*	10	8.3	10	8.8	-5.5	9	11.6	-28.5

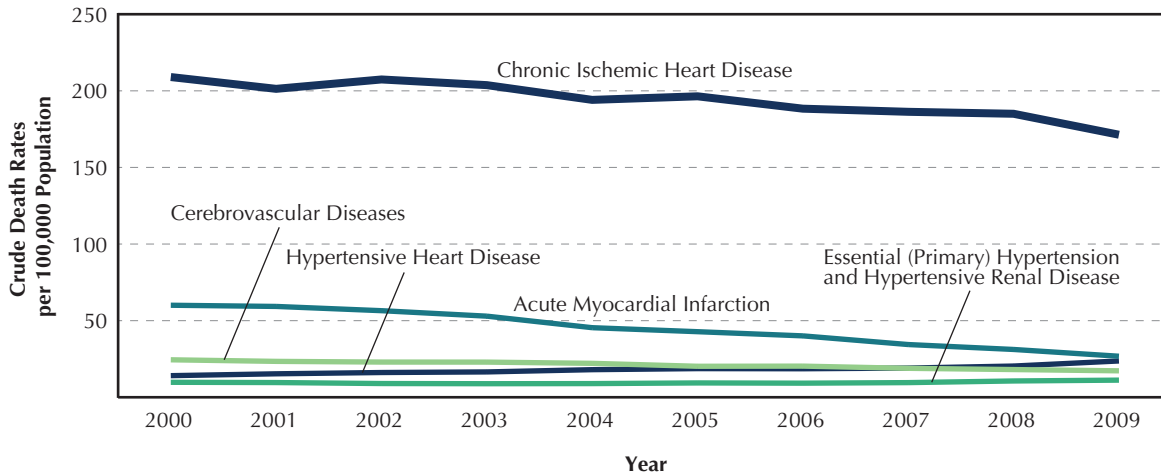
* This definition is the same as presented in the routine tables of this *Summary*. It varies from unintentional drug overdose category in the Accident section of this *Executive Summary*, which uses information other than the underlying cause of death to identify more overdose deaths. See Technical Notes of the *Summary* for a complete description of these differing definitions of drug-related deaths.

- Heart disease, cancer and influenza/pneumonia consistently ranked as the top three leading causes of death during the last 10 years.
- Of the 10 leading causes of death, only essential hypertension and hypertensive renal disease claimed more lives in 2009 than in 2000, making this category one of the top 10 killers in New York City. The death rate from this cause increased 14%.
- Over the last decade, the death rate due to HIV disease has decreased by 55%. Fewer than 1,000 HIV disease deaths occurred in New York City in 2009, the lowest number since the rise of this epidemic.
- The death rate from diabetes mellitus has decreased 12% since 2000, but this decrease is less than the 17% decline in the overall death rate. As a result, diabetes became the fourth leading cause of death in 2009. It had been the sixth leading cause in 2000.
- Nephritis, nephrotic syndrome and nephrosis — mostly associated with renal failure — are no longer among the 10 leading causes of death in New York City.

DEATHS IN NEW YORK CITY

CARDIOVASCULAR DISEASE DEATHS

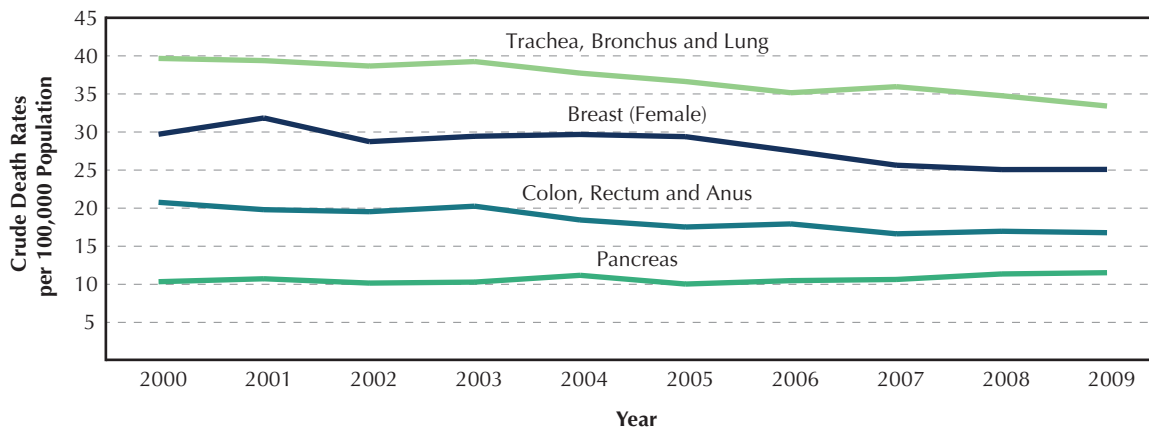
Crude Death Rates for Cardiovascular Disease, New York City, 2000–2009



- Heart disease accounted for nearly 88% of all cardiovascular disease deaths in 2009, but continues to decline.
 - The crude death rate for the two main components of heart disease decreased between 2000 and 2009. Chronic ischemic heart disease fell by 18%, and acute myocardial infarction by 55%.
 - The death rate due to hypertensive heart disease, another component of heart disease, increased 68% between 2000 and 2009.
- The cerebrovascular disease death rate decreased 29% between 2000 and 2009.

CANCER DEATHS

Crude Death Rates for Cancer, New York City, 2000–2009

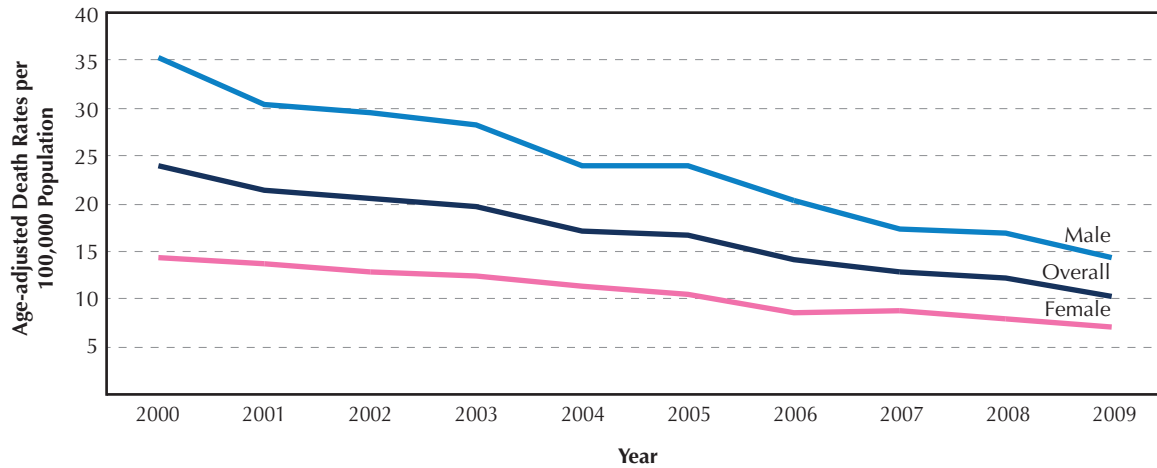


- Overall cancer mortality rates have decreased 11% since 2000:
 - Death rates from colon, rectal and anal cancer fell 19%, from 21 to 17 deaths per 100,000 population.
 - Deaths rates from lung cancer fell 17.5% from 40 to 33 deaths per 100,000 population.
 - Deaths rates from female breast cancer fell 17%, from 30 to 25 deaths per 100,000 population.
- Only one of the top five causes of cancer death increased. Pancreatic cancer rates rose by 11%, from 10 to 11 deaths per 100,000 population.

DEATHS IN NEW YORK CITY

HIV DISEASE DEATHS

Age-Adjusted Death Rates for HIV Disease by Sex, New York City, 2000–2009*

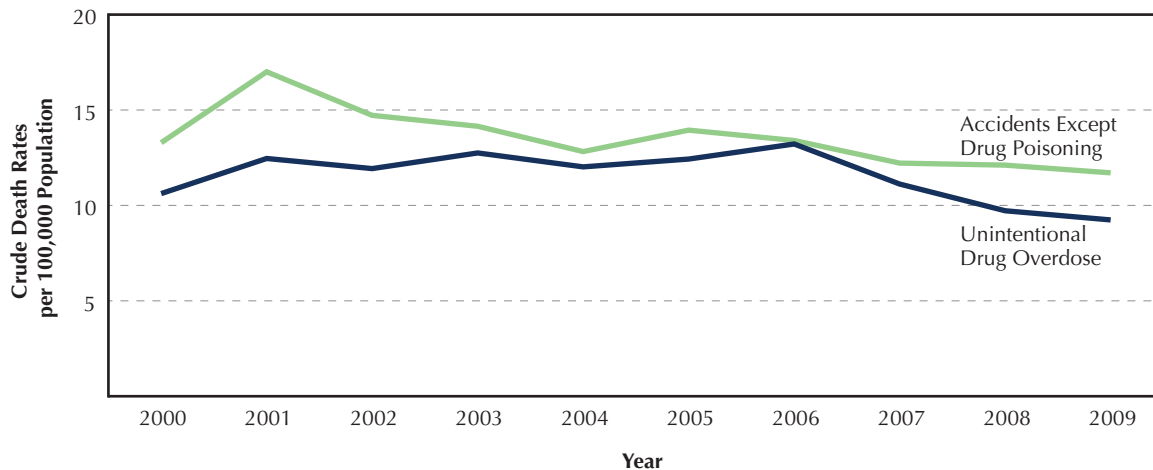


* Death rates are age-adjusted to allow comparison between male and female rates given the differing age distributions of the male and female populations.

- Since 2000, the age-adjusted death rate from HIV disease decreased 57%, from 24 to 10.4 deaths per 100,000 population.
- Males continue to be disproportionately affected by HIV disease, with a death rate of 14.4 per 100,000 population in 2009 — more than double the female death rate of 7.

ACCIDENTS

Crude Death Rates for Accidents Except Drug Poisoning and Unintentional Drug Overdose (Age ≥ 15 Years), New York City, 2000–2009

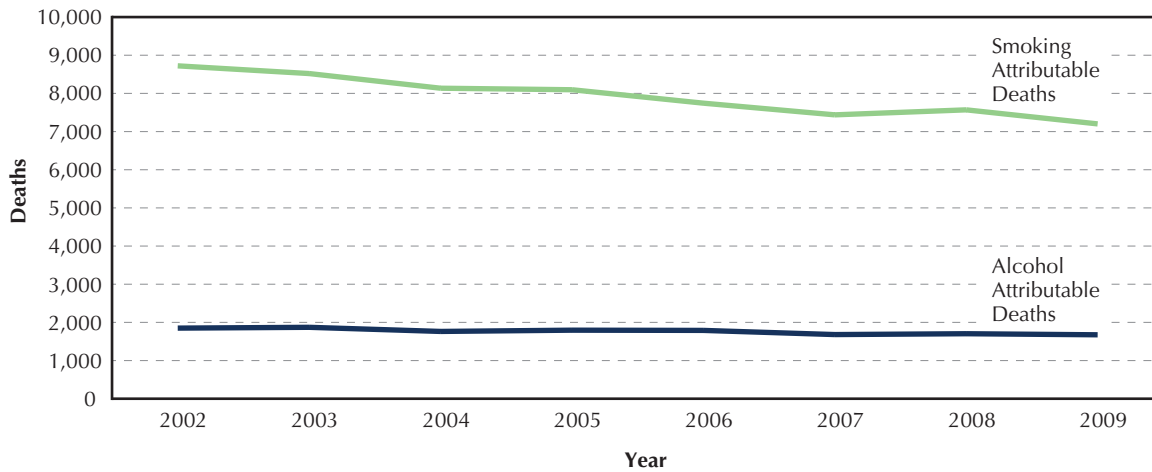


- Rates of accidental deaths, excluding accidental drug overdose, decreased 8% since 2000.
- Since 2000, unintentional drug overdose death rates have decreased slightly, from 10.6 to 9.2 deaths per 100,000 population. However, rates have fluctuated throughout the decade, rising during the first six years and declining since 2006.

DEATHS IN NEW YORK CITY

DEATHS ATTRIBUTABLE TO ALCOHOL AND SMOKING

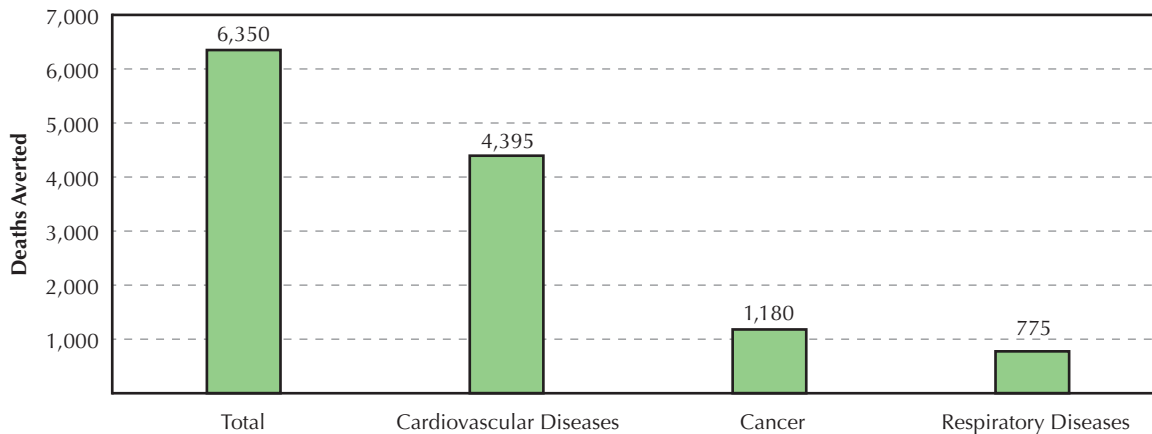
Alcohol- and Smoking-Attributable Deaths, New York City, 2002–2009*



*These data are estimated based on two Centers for Disease Control and Prevention algorithms developed to estimate deaths attributed to smoking and alcohol consumption. See Technical Notes of the *Summary: Alcohol- and Smoking-attributable Mortality*.

- In 2009, there were 1,675 alcohol-attributable deaths, a decrease of 9.5% from 2002, the earliest year for which these data are available. New York City residents accounted for 1,530 of these events.
- As in previous years, alcohol caused a greater number of deaths among men — more than 73% of alcohol-attributable deaths were among men. From 2008 to 2009, alcohol-attributable deaths among men decreased 2.8%.
- In 2009, smoking-attributable deaths in adults older than 35 years of age decreased 17% from 2002, the earliest year for which these data are available.

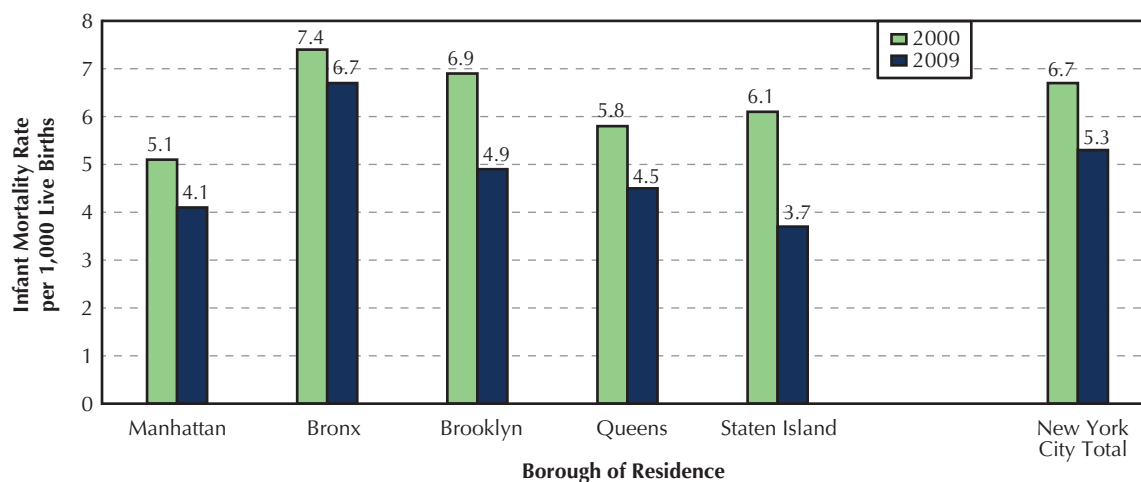
Estimated Lives Saved through Reductions from Baseline Smoking Rate, New York City, 2002–2009



- From 2002 through 2009, an estimated 6,350 lives have been saved through reductions in the smoking rate — 4,395 from cardiovascular disease, 1,180 from cancer and 775 from respiratory disease.

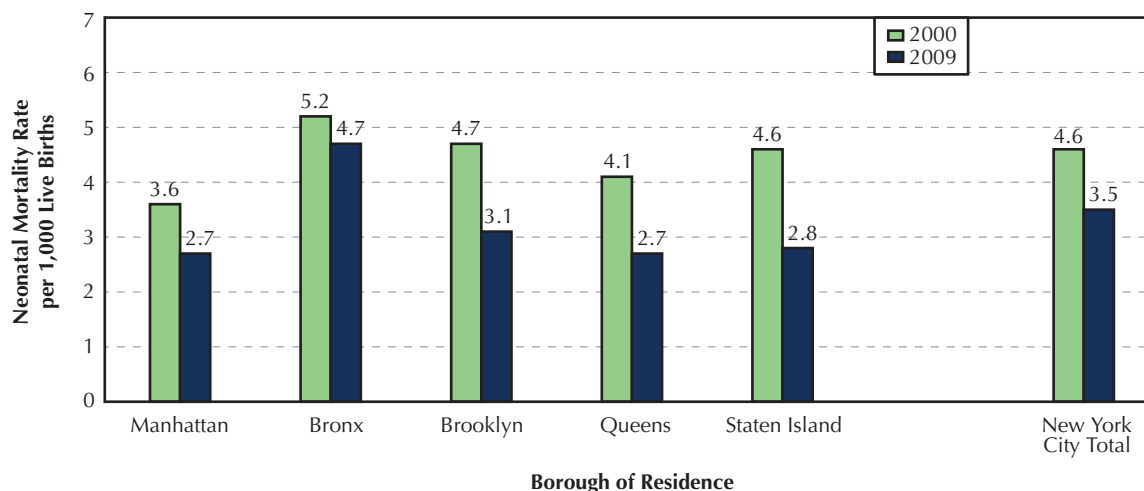
INFANT MORTALITY

Infant Mortality Rate by Borough of Residence, New York City, 2000 and 2009*



* Infant is defined as a child less than 1 year of age.

Neonatal Mortality Rate by Borough of Residence, New York City, 2000 and 2009*

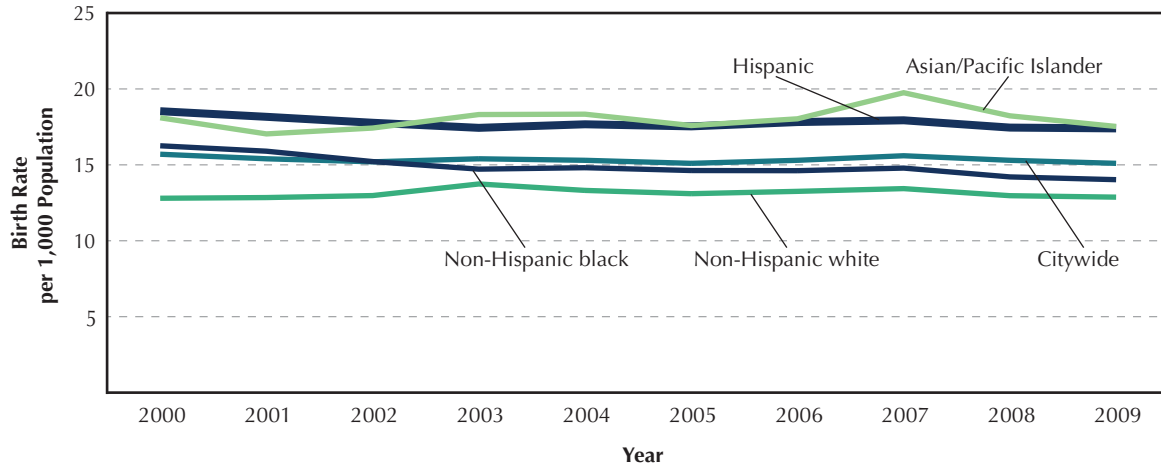


* Neonatal period is when an infant is less than 28 days old.

- In 2009, the city's infant mortality rate reached an historic low of 5.3 infant deaths per 1,000 live births, a decrease of 3.6% from 2008 (5.5) and nearly 21% from 2000 (6.7).
- The infant mortality rate remains higher in the Bronx than in New York City overall.
- Large disparities persist, with non-Hispanic blacks having the highest infant mortality rate at 9.5 per 1,000 live births, compared with 6.3 among Puerto Ricans, 4.8 among other Hispanics, 3.4 among non-Hispanic whites and 2.8 among Asian and other Pacific Islanders.
- New York City's neonatal mortality rate, a subset of the infant mortality rate, has also decreased, from 4.6 neonatal deaths per 1,000 live births in 2000 to a low of 3.3 in 2007. Since 2007, there have been small fluctuations in the rate, which was 3.5 in 2009.
- The neonatal mortality rate is highest in the Bronx, followed by Brooklyn, Staten Island, Queens and Manhattan.

BIRTHS

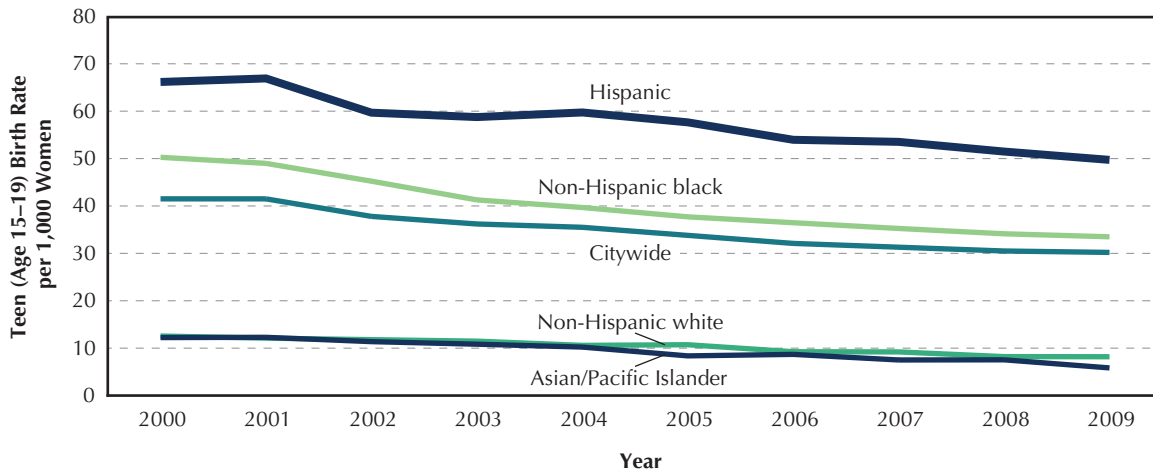
Birth Rates by Race/Ethnicity, New York City, 2000–2009



- In the past 10 years, the number of live births has increased slightly, by 2%. This increase was smaller than the growth in the population of New York City; therefore, the birth rate decreased, from 15.7 to 15.1 births per 1,000 population, between 2000 and 2009.
- In the past year, the number of live births has decreased less than 1%, from 127,680 in 2008 to 126,774 in 2009.
- More babies were born to Hispanic mothers than any other racial/ethnic group in 2009, accounting for 32% of births.
- In 2009, over 30% of mothers were non-Hispanic whites, 22% were non-Hispanic blacks and 14% were Asian/Pacific Islanders.

TEEN BIRTHS

Teen (Age 15-19) Birth Rate by Race/Ethnicity, New York City, 2000–2009



- Since 2000, the birth rate among teens has declined 27% from 41.5 to 30.2 births per 1,000 women in 2009, continuing a downward trend since 1994.
- Teen births accounted for 6.2% of all births in 2009.
- Local geographic disparities persist; the highest teen birth rate is in the Bronx and the lowest in Staten Island.