



**New York City Department of Health and Mental Hygiene (NYC DOHMH)
Bureau of Environmental Surveillance and Policy**

**Using the New York City
Environmental Public Health Tracking Portal**

July 6, 2009

Table of Contents

Why use the tracking portal?.....3
Quick View.....4
Summarize.....6
Build a Table.....11
Show Disparities16
Link Data.....19
Time Trend22
Map.....24

Why use the tracking portal?

The Environmental Public Health Tracking Portal enables users from all walks of life—from graduate students to researchers to community board members—to gather environmental health data.

This document provides realistic scenarios (examples) of why and how to use tracking portal functions.

- Quick View
- Summarize
- Build a Table
- Show Disparities
- Link Data
- Time Trend
- Build a Map

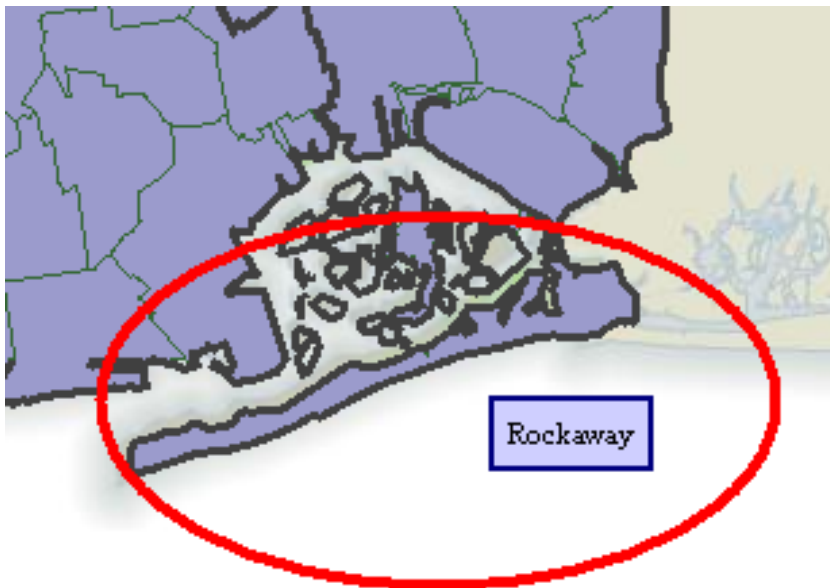
Quick View

You are organizing a “Healthy Neighborhood” community meeting in the Far Rockaways, and you want to provide information on how your neighborhood environment compares to others in Queens and New York City.

1. Go to the Environmental Public Health Tracking Portal. Click on the large button labeled **Quick View**.



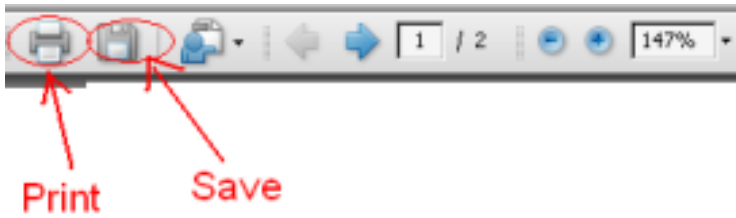
2. When the map comes into view, use your mouse or other pointing device to click on the Far Rockaways. The names of neighborhoods will appear as you hover over different areas of the map.



3. After clicking on the neighborhood, you will be taken to a new screen that has a summary environmental health report for that neighborhood (for example, Rockaways, circled below), with comparison data for the borough (Queens) and New York City as a whole.

Topic	Indicator	Rockaways	Queens	NYC
Social Environment	Population living below twice the poverty level (%)	42.9	32.7	39.8
Childhood Lead Poisoning	Blood lead testing in 1 and 2 year olds (%)	69	67	70
	Children less than 6 years old with blood	7.3	6.2	7.3

- Using the tool box in the top left hand corner of the new window, you can save a copy of the report to your computer, or print copies of the report to distribute.



Summarize

You are a researcher at a local university who is interested in the quality of housing in New York City neighborhoods. Using the Environmental Public Health Tracking Portal, you can get an idea of which neighborhoods have the poorest quality housing.

1. Go to the Environmental Public Health Tracking Portal and click on the button labeled **Enter Tracking Portal**.
2. In the box labeled *Select a Topic*, click on **Neighborhood, Housing and Water Quality**. The next box, *Select a Sub-Topic*, fills in with a list of sub-topics.
3. Click on **Housing Quality** and then select an indicator from the list in the box labeled *Select an Indicator*.

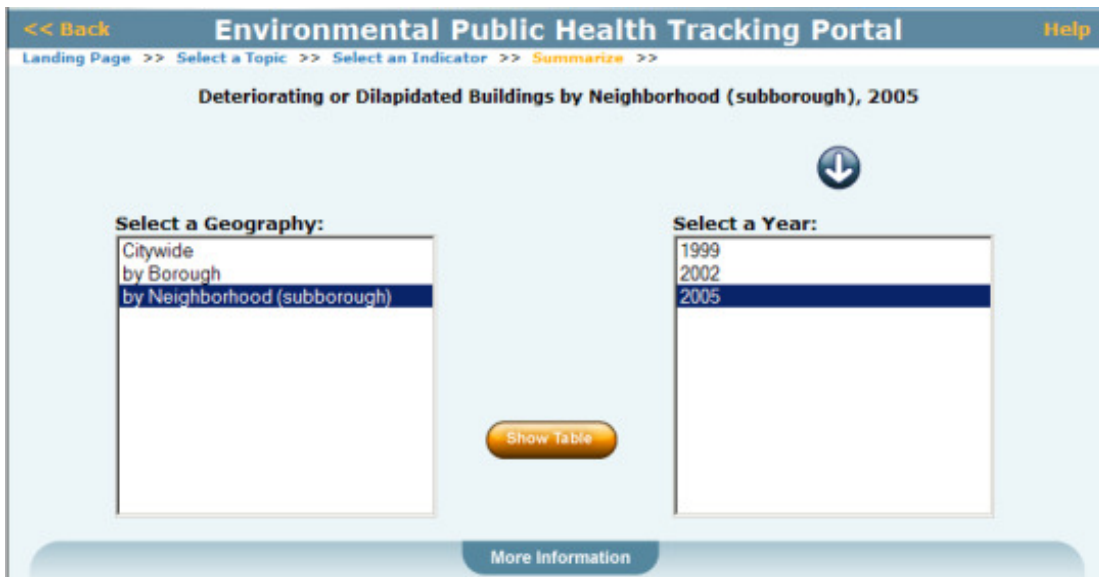
Note that information about Housing Quality is available in the area labeled *More Information*.



4. Once you have selected an indicator, (for example, **Deteriorating or Dilapidated Buildings**), you will see four buttons.
5. Click **Summarize** to see a table of the data available for your selected indicator for a specific year and geography (citywide, borough, or neighborhood).



- Since you are interested in neighborhood differences in housing quality, select **by Neighborhood** in the box labeled *Select a Geography* and select the most recent year of data.
- Click on the **Show Table** button.



You will see a table that includes all of the NYC neighborhoods and the measures for the indicator that you have selected. For this indicator, **Households in deteriorating or dilapidated buildings**, you see the number of households in deteriorating or dilapidated buildings and the percent of households in deteriorating or dilapidated buildings for each neighborhood. The number and percent for New York City as a whole is also included for comparison.

You can sort the values in the columns by clicking on one of the column headers.

The measures are described in the box labeled *More Information*.

Using this table, you can explore how neighborhoods in NYC rank for housing quality.

Environmental Public Health Tracking Portal

Navigation: << Back | Landing Page >> | Select a Topic >> | Select an Indicator >> | Summarize >> | Table >>

Buttons: Export Table | Print Table | Save as PDF

Households in Deteriorating or Dilapidated Buildings by Neighborhood (subborough), 2005

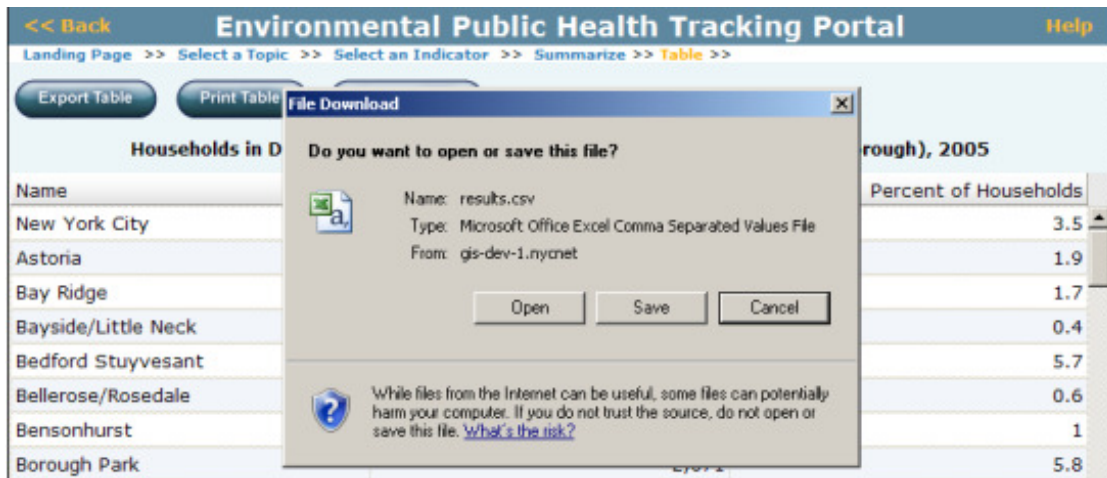
Name	Number of Households	Percent of Households
New York City	106,141	3.5
Astoria	1,427	1.9
Bay Ridge	903	1.7
Bayside/Little Neck	191	0.4
Bedford Stuyvesant	2,456	5.7
Bellerose/Rosedale	403	0.6
Bensonhurst	618	1
Borough Park	2,671	5.8
Brooklyn Heights/Fort Green	2,237	5

Buttons: More Information | Print

Name: Deteriorating or Dilapidated Buildings **Measure:** Number of Households **How Calculated:** Estimated number of households in deteriorating or dilapidated buildings. **Source:** NYC Housing and Vacancy Survey (HVS) **Year:** 2005

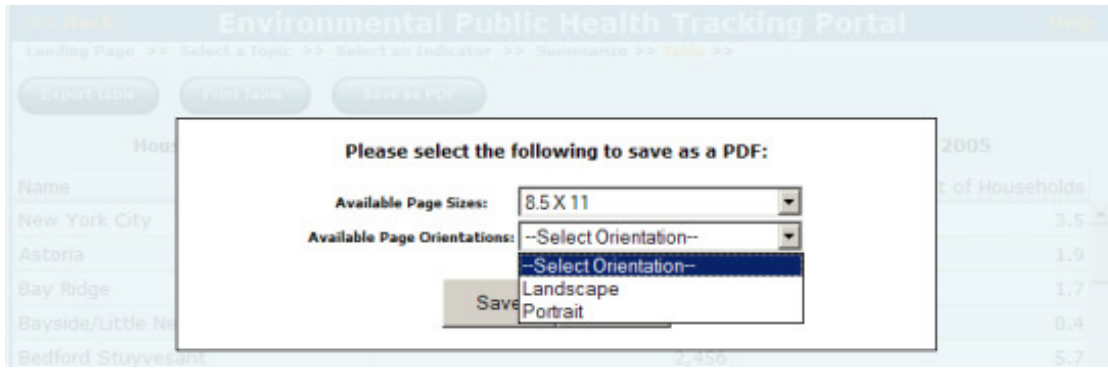
8. Click the **Print Table** button if you want to print the table.
9. Click the **Export Table** button if you want to export the data as a .csv file that can be opened in Microsoft® Excel.

You will be asked to save the file to a specific location on your computer.



You can also save the table as a .pdf file to share with colleagues. You will be asked to select a paper size and a page layout. (See "Exporting Graph Data", "Printing Graphs", or "Printing Graphs to PDF" in the online Help documentation for more information.)

Environmental Public Health Tracking Portal User Documentation



11. If you want to look at other indicators or make a chart or map of this indicator, click on **Select an Indicator** in the bread crumbs.



Build a Table

You are a graduate student who wants to build a multiple regression model to see if housing conditions predict the presence of rodents in New York City neighborhoods. (Note that this will be an ecological analysis that uses data at the neighborhood level.)

The Environmental Public Health Tracking Portal's Build a Table function allows you to gather all the data necessary for your analysis in a single .csv file that can be opened using Microsoft[®] Excel software.

1. Go to the Environmental Public Health Tracking Portal and click on the button labeled **Enter Tracking Portal**.
2. In the box labeled *Select a Topic*, click on **Pests and Pesticide Use**. The next box, *Select a Sub-Topic*, fills in with a list of sub-topics.
3. Click on **Mice and Rats** and then select the indicator **Mice and Rats in the Building (by Household)** from the list in the box labeled *Select an Indicator*.

Note that information about Mice and Rats is available in the area labeled *More Information*.

4. Once you have selected your indicator, four buttons appear. Click on the **Explore** button. This reveals three ways you can explore your data: **Build a Table**, **Show Disparities**, and **Link Data**.

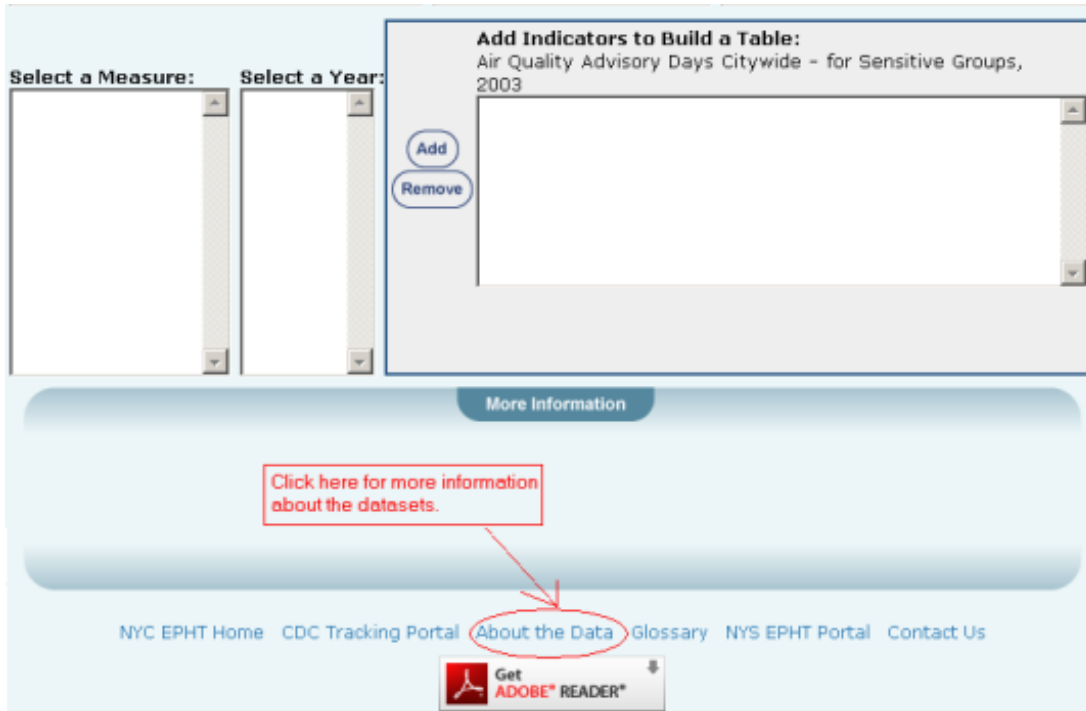


5. Click on the **Build a Table** option. This opens a new screen where you will need to choose a measure, geography, and year for your indicator.

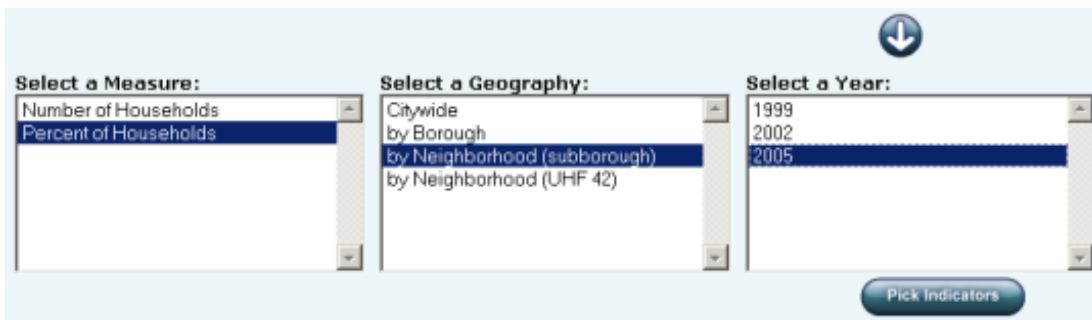


6. Since you are interested in prevalence of rodents by neighborhood, choose **Percent of Households** from the *Select a Measure* box.

Note that you have two neighborhood options in the Select a Geography box (UHF 42 and subborough). Your selection will determine which indicators you can add to your table, since not all indicators are available at all geographies. The only way to know which indicators are available is by trial and error, or learning about the data by clicking on the **About the Data** link at the bottom of the page.



7. Select **by Neighborhood (subborough)**.
8. To obtain the most current data, select **2005** from the *Select a Year* box. Your selection should look like this image.

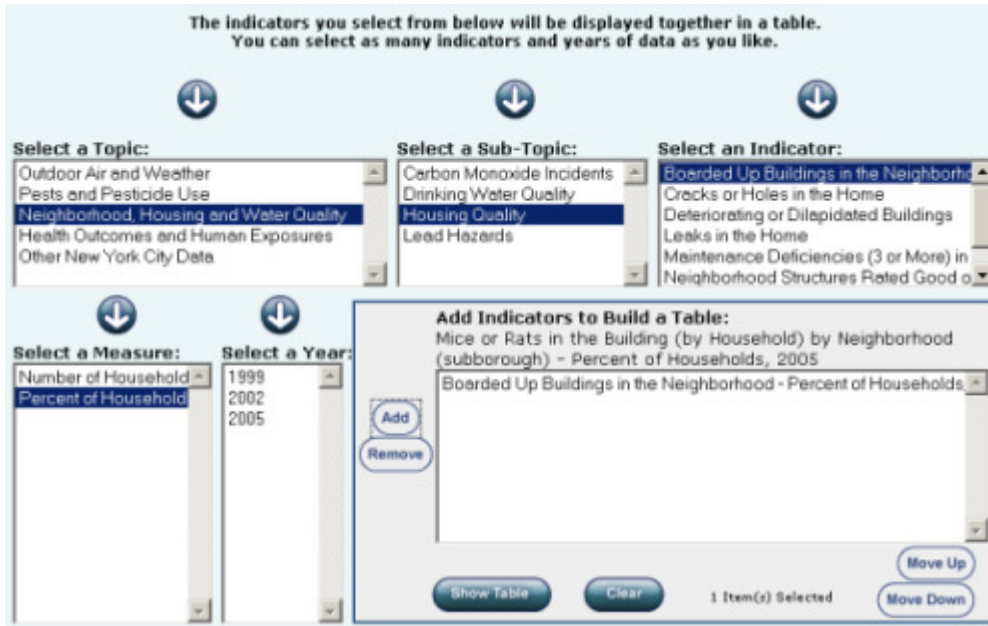


9. Click the **Pick Indicators** button. You will now see a screen where you will be able to add additional indicators to your table.
10. Select **Neighborhood, Housing and Water Quality** from the box labeled *Select a Topic*.
11. Select **Housing Quality** from the *Select a Sub-Topic* box.
12. Select **Boarded up Buildings** from the *Select an Indicator* box.
13. Once your indicator has been selected, choose **Percent of Households** from the *Select a Measure* box and **2005** from the *Select a Year* box.

Note that each indicator you choose is at the Neighborhood (subborough) geography level, similar to your base indicator (Mice or Rats in the Building).

14. Click the **Add** button in the *Add Indicators to Build a Table* box.

This process has allowed you to successfully add an indicator to the table you are building, and your screen should look similar to the image below.



15. Repeat this process and add the remaining indicators in the **Housing Quality** sub-topic:
 - a. Cracks or Holes in the Home
 - b. Deteriorating or Dilapidated Buildings
 - c. Leaks in the Home
 - d. Maintenance Deficiencies (3 or More) in the Home
 - e. Neighborhood Structures Rated Good or Excellent
 - f. Use of Supplemental Heat

Select the same measure (**Percent of Households**) and year (**2005**) for these indicators so that they are consistent.

Note that you can add or remove indicators from the *Add Indicators to Build a Table* box at any time, as well as change the position of your indicators with the **Move Up** and **Move Down** buttons.

- Click the **Show Table** button to view your table.

The indicators you select from below will be displayed together in a table. You can select as many indicators and years of data as you like.

Select a Topic:

- Outdoor Air and Weather
- Pests and Pesticide Use
- Neighborhood, Housing and Water Quality**
- Health Outcomes and Human Exposures
- Other New York City Data

Select a Sub-Topic:

- Carbon Monoxide Incidents
- Drinking Water Quality
- Housing Quality**
- Lead Hazards

Select an Indicator:

- Cracks or Holes in the Home
- Deteriorating or Dilapidated Buildings
- Leaks in the Home**
- Maintenance Deficiencies (3 or More) in Neighborhood Structures Rated Good or Excellent
- Use of Supplemental Heat

Select a Measure:

- Number of Household
- Percent of Household**

Select a Year:

- 1999
- 2002
- 2005**

Add Indicators to Build a Table:

Mice or Rats in the Building (by Household) by Neighborhood (subborough) - Percent of Households, 2005

- Cracks or Holes in the Home - Percent of Households, 2005
- Boarded Up Buildings in the Neighborhood - Percent of Households, 2005
- Deteriorating or Dilapidated Buildings - Percent of Households, 2005
- Leaks in the Home - Percent of Households, 2005
- Maintenance Deficiencies (3 or More) in the Home - Percent of Households, 2005
- Neighborhood Structures Rated Good or Excellent - Percent of Households, 2005
- Use of Supplemental Heat - Percent of Households, 2005**

7 Item(s) Selected

Show Table Clear Move Up Move Down

The subsequent screen displays a table with the indicators selected in the previous boxes. Note that you can double-click on the field header to sort the columns in this table, and you can drag the columns to the right or left to resize them.

Export Table Print Table Save as PDF

Table of Selected Indicators by Neighborhood (subborough)

Name	Mice or Rats in the Building (by Household) - Number of Households, 2005	Cracks or Holes in the Home - Number of Households, 2005	Boarded Up Buildings in the Neighborhood - Number of Households, 2005	Deteriorating or Dilapidated Buildings - Number of Households, 2005	Leaks in the Home - Number of Households, 2005
Elmhurst/Corona	8,924	3,642	523	1,082	
Howard Beach/South Ozone Park	2,229	1,455	802	948	
South Shore	1,279	938	813	193	
Kingsbridge Heights/Mosholu	16,437	7,221	875	5,984	

More Information Print

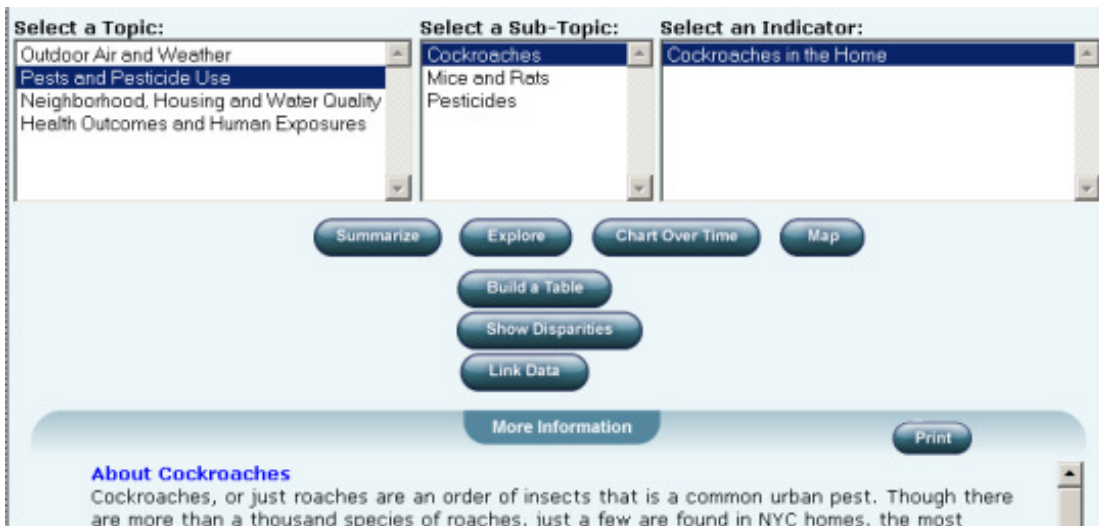
Also note that information about each selected indicator is included in the *More Information* area.

- Click the **Export Table** button at the top of the page to export the data as a .csv file for your analysis. This file can be opened in Microsoft® Excel.

Show Disparities

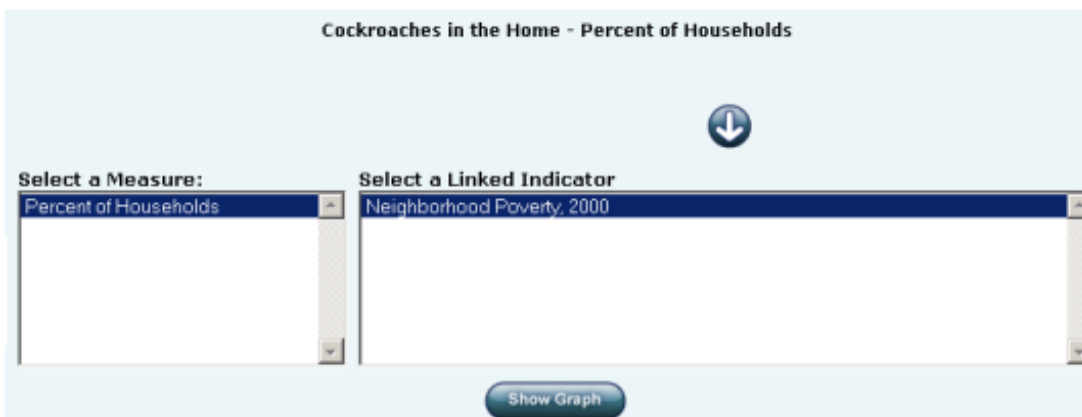
You are a researcher for a group concerned with environmental justice, and you want to understand the extent to which poorer neighborhoods in NYC suffer disproportionately from poor environmental health. You can gain such an understanding by going to the Environmental Public Health Tracking Portal.

1. Click on the button labeled **Enter Tracking Portal**.
2. In the box labeled *Select a Topic*, click on **Pests and Pesticide Use**.
3. Click on **Cockroaches** and then select **Cockroaches in the Home** from the list in the box labeled *Select an Indicator*. Notice that information about Cockroaches is available in the area labeled *More Information*.



4. Once you have selected the indicator, you will see four buttons. Click on **Explore**, and then **Show Disparities**.

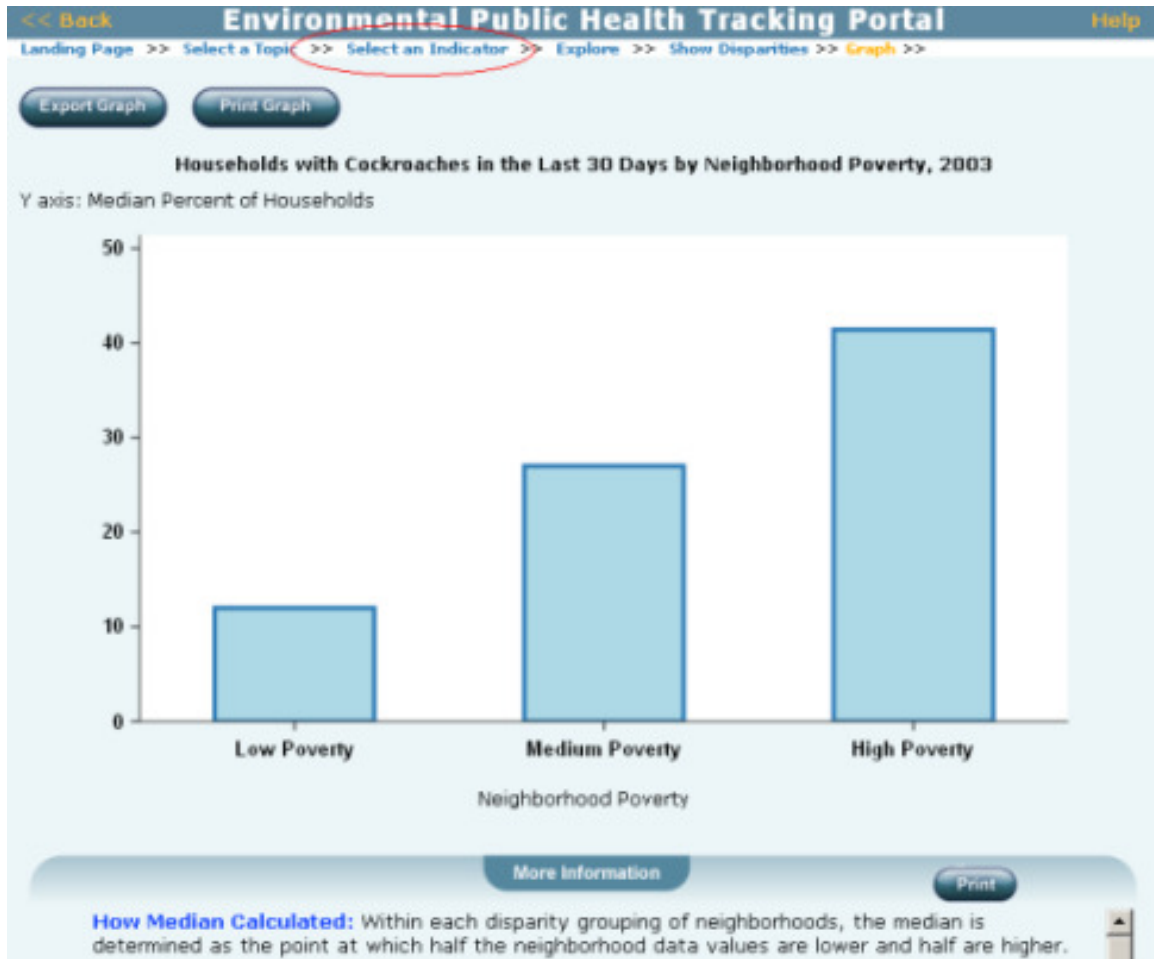
You will have to select a measure and a disparity indicator. Note that in many cases there may be only one selection option in these boxes.



5. Click on **Show Graph** to view a bar chart that depicts the median prevalence of cockroaches in the home across neighborhoods ranked by low, medium, and high poverty.

Note that you can scroll over each bar in the chart with your pointer, and the exact median value for the neighborhood poverty grouping will appear. Information about how the median

is calculated, along with the selected indicator and classification of neighborhood into a poverty grouping can be found in *More Information*.



You can look at disparities in other indicators one at a time by clicking on **Select an Indicator** in the bread crumbs, and going through the subtopics and indicators that interest you. Note that not all indicators are available for disparity charts, because not all indicators are available at the neighborhood level.

In addition to looking at the charts, you can also export the data behind each one in a .csv file format, which can be opened in Microsoft® Excel, or you can print the chart. (See "Exporting Graph Data", "Printing Graphs", or "Printing Graphs to PDF" in the online Help documentation for more information.)

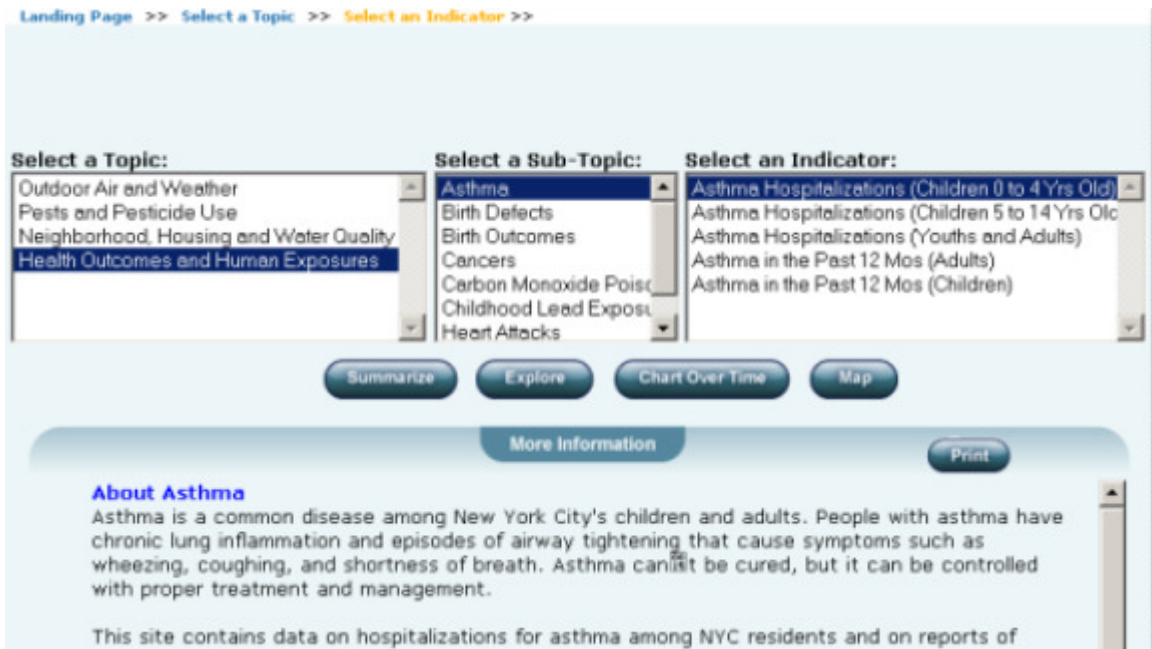
Link Data

You are a community board member from the South Bronx who wants to understand why asthma hospitalization rates are relatively high in your neighborhood. To add to your understanding of the situation, you can use the Environmental Public Health Tracking Portal to view associations between environmental health indicators and hospitalization rates.

1. Go to the portal and click on the button labeled **Enter Tracking Portal**.
2. In the box labeled *Select a Topic*, click on **Health Outcomes and Human Exposures**. The next box, *Select a Sub-Topic*, fills in with a list of sub-topics.
3. Click on **Asthma** and then select an indicator from the list in the box labeled *Select an Indicator*.

Note that information about Asthma is available in the area labeled *More Information*.

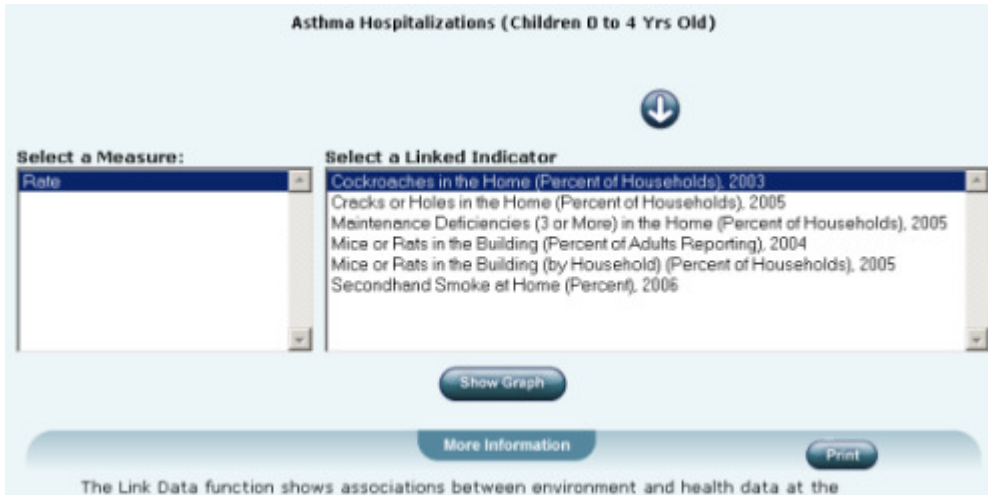
4. Once you have selected an indicator, for example, **Asthma Hospitalizations (Children 0 to 4 Yrs Old)**, you will see four buttons.



5. Click on **Explore** and then **Link Data**. You will then select a measure and a linked indicator to view an ecological association between asthma and another environmental health indicator.

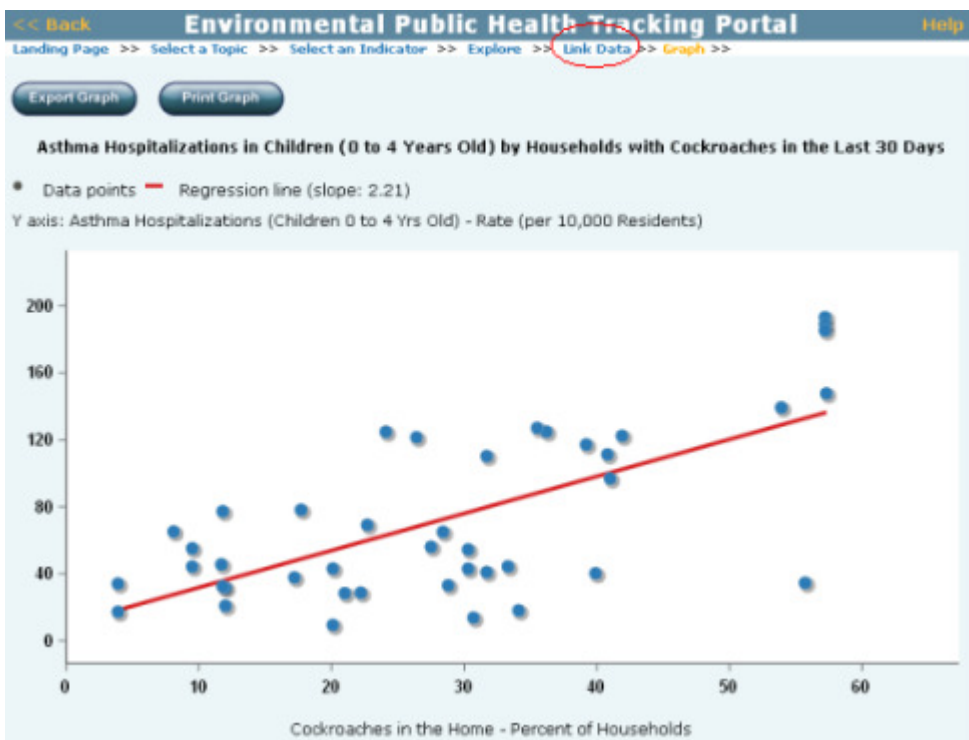
Note that you can read about linking data in the *More Information* box.

6. Select **Rate** and then **Cockroaches in the Home** from the *Select an Indicator* box.



7. Click the **Show Graph** button. You will see a scatter plot of x and y values for each NYC neighborhood, and a regression line that has been fit to the data points.

You can see that there is a tendency for neighborhoods with a high prevalence of cockroaches in the home to also have higher rates of asthma hospitalizations in children; but there is also a lot of scatter around the regression line. The scatter means that the relationship is complex and not well predicted by the presence of cockroaches.



Note, also, that scrolling over a point will give you the x and y value of that point. You can view associations with other indicators by clicking on **Link Data** in the bread crumbs and selecting a different linked indicator.

Before you select a different linked indicator, you can export the data in this graph to a .csv file format, which can be opened in Microsoft[®] Excel. You will be asked to save the file to a specific location on your computer. (See "Exporting Graph Data" for information.) You can

also print the graph directly. (See "Printing Graphs" or See "Printing Graphs to PDF" for information.)

Time Trend

You are a daycare provider who is interested in knowing how many days during the year air quality alerts have been issued that recommend refraining from outdoor activity. Because some of the children in your care have asthma, you are also interested in knowing if there have been many more air quality alert days for these sensitive individuals. To learn about trends in air quality in NYC, go to the Environmental Public Health Tracking Portal.

1. Click on the button labeled **Enter Tracking Portal**.
2. In the box labeled *Select a Topic*, click on **Outdoor Air and Weather**. The next box, *Select a Sub-Topic*, fills in with a list of Sub-Topics.
3. Click on **Air Pollution** to select this sub-topic and then select an indicator from the list that appears in the box labeled *Select an Indicator*.
4. Select **Air Quality Advisory Days**, and you will see four buttons.

Note that information about air pollution is available in the area labeled *More Information*.

The screenshot shows a web interface with three columns for selection: 'Select a Topic:', 'Select a Sub-Topic:', and 'Select an Indicator:'. The 'Select a Topic:' column has 'Outdoor Air and Weather' selected. The 'Select a Sub-Topic:' column has 'Air Pollution' selected. The 'Select an Indicator:' column has 'Air Quality Advisory Days' selected. Below these columns are four buttons: 'Summarize', 'Explore', 'Chart Over Time', and 'Map'. A 'More Information' button is also present. Below the buttons is a section titled 'About Air Pollution' with the text: 'Outdoor air pollutants are unhealthy to breathe. New York City is not in compliance with federal clean air requirements for two pollutants of particular health concern; fine particulate matter and ground-level ozone.'

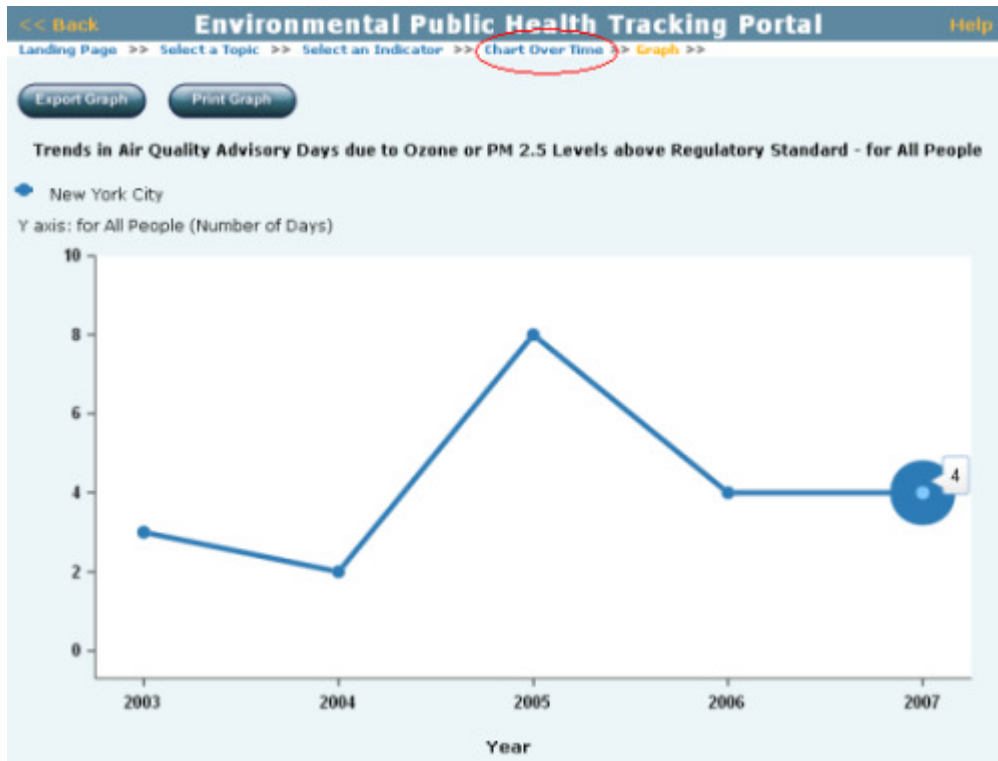
5. Click on **Chart Over Time** to see a time trend chart of the data available for your selected indicator. You will have the option of selecting one of several measures from the *Select a Measure* box.
6. Select **for All People**. Notice that the measure you selected is described in more detail in the *More Information* box.
7. When you are ready to view the graph, click on the **Show Graph** button.



You will see a chart called *Trends in Air Quality Advisory Days due to Ozone or PM 2.5 Levels above Regulatory Standard – for All People*.

Note that if you scroll over a point with your pointer, the number of air quality advisory days for that year will appear.

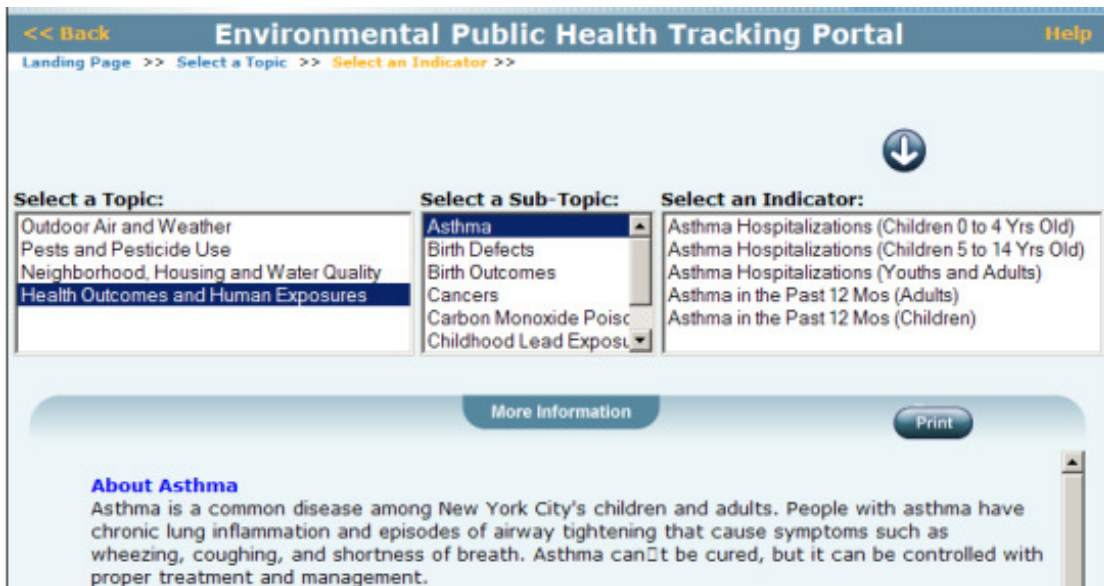
8. You can click on the **Export Graph** button to save the data in the graph as a .csv file that can be opened using Microsoft[®] Excel .
9. You can click on the **Print Graph** button to print the graph.
10. You can click on the **Chart Over Time** breadcrumb at the top of the page to return to the *Select a Measure* box.



Map

You are a new mom wondering if your neighborhood has a high asthma rate in children, since a couple of big highways cross it. You want to compare your neighborhood with some others that are also crossed by highways.

1. Go to the Environmental Public Health Tracking Portal and click on the button labeled **Enter Tracking Portal**.
2. In the box labeled *Select a Topic*, click on **Health Outcomes and Human Exposures**. The next box, **Select a Sub-Topic**, fills in with a list of sub-topics.
3. Click on **Asthma** and then select an indicator from the list in the box labeled *Select an Indicator*. Note that information about Asthma is available in the area labeled *More Information*.



4. Click on **Asthma Hospitalizations (Children 0 to 4 Yrs Old)**, and you will see 4 buttons.

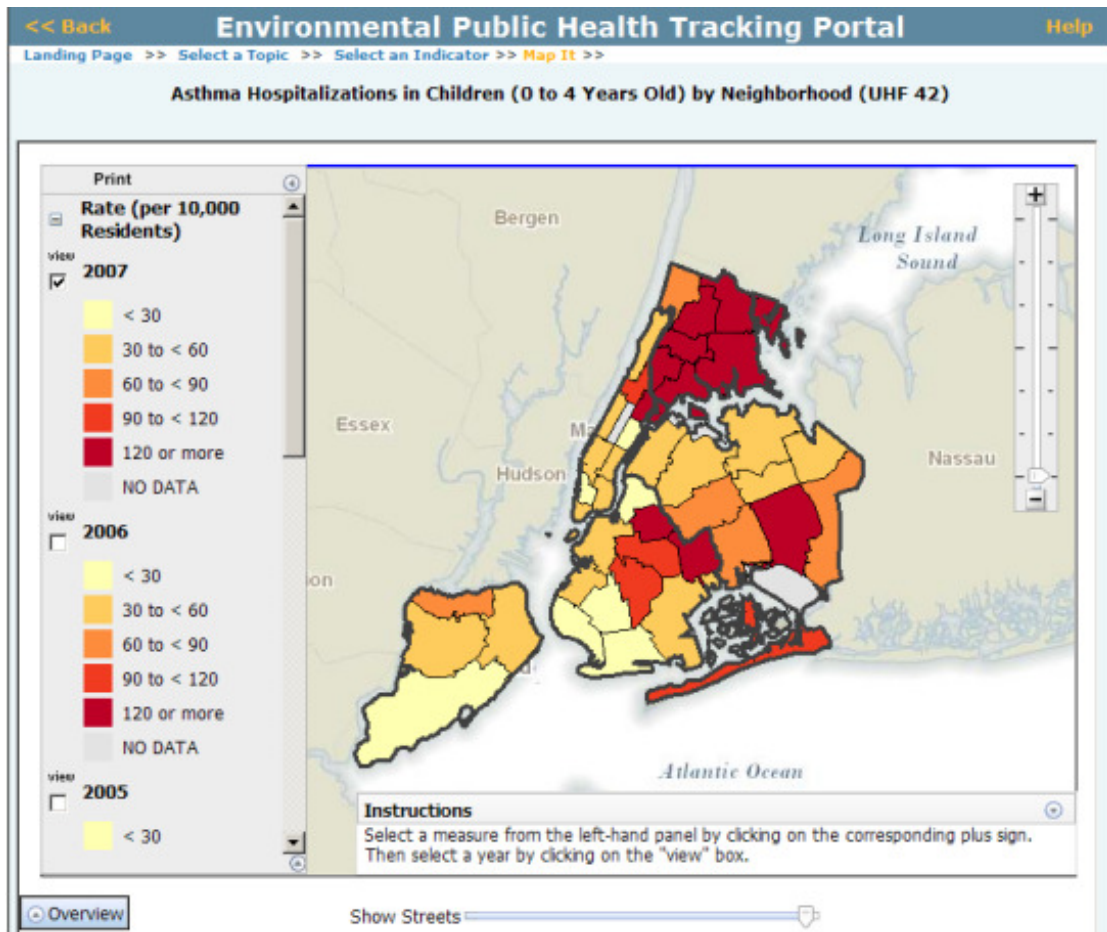


5. Click the **Map** button to see a NYC neighborhood map of the indicator you selected.

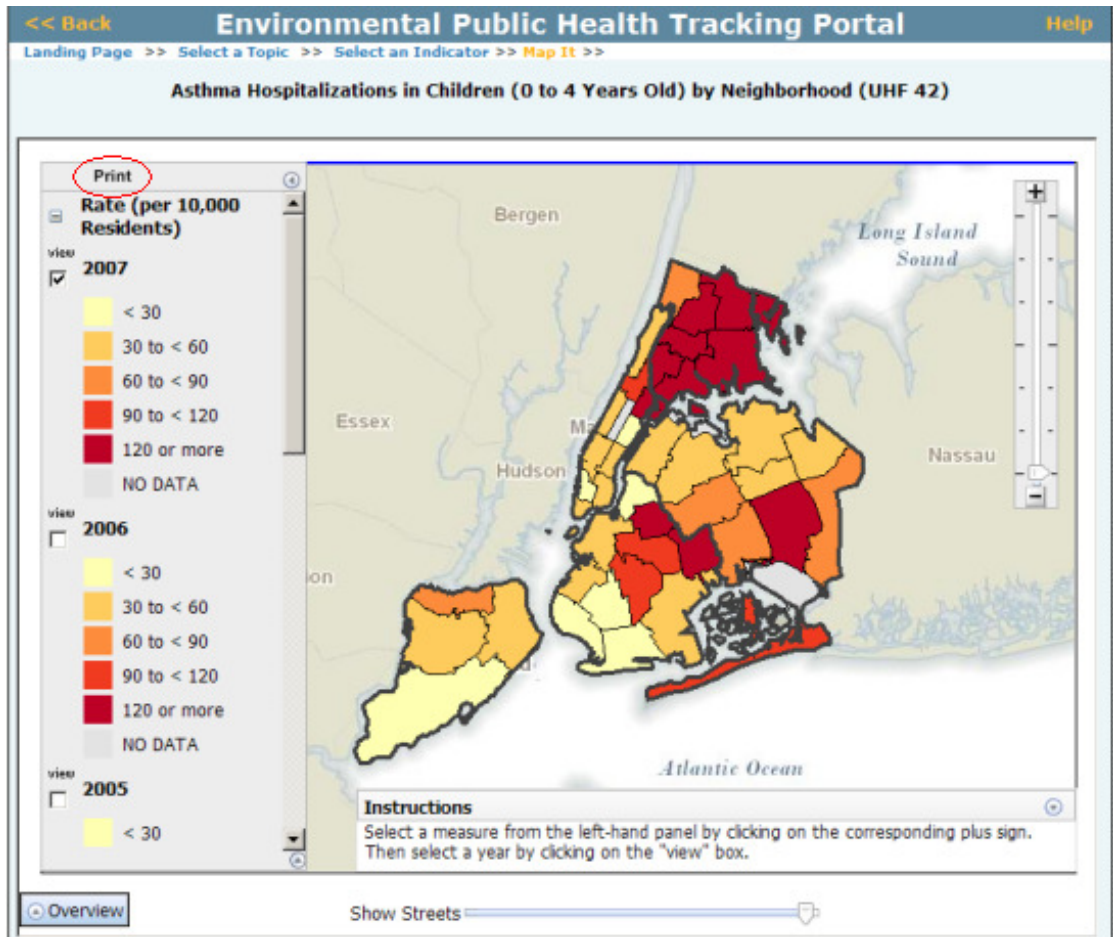
Environmental Public Health Tracking Portal User Documentation

A map of NYC neighborhoods fills your screen. You can see three years of data for the rate of asthma hospitalizations per 10,000 NYC residents in the legend; however, the number of years of data available will differ according to the indicator you select. To change the year of data being mapped, click the box labeled **view** next to the year of your choice.

The data are described in more detail in the box labeled *More Information*.

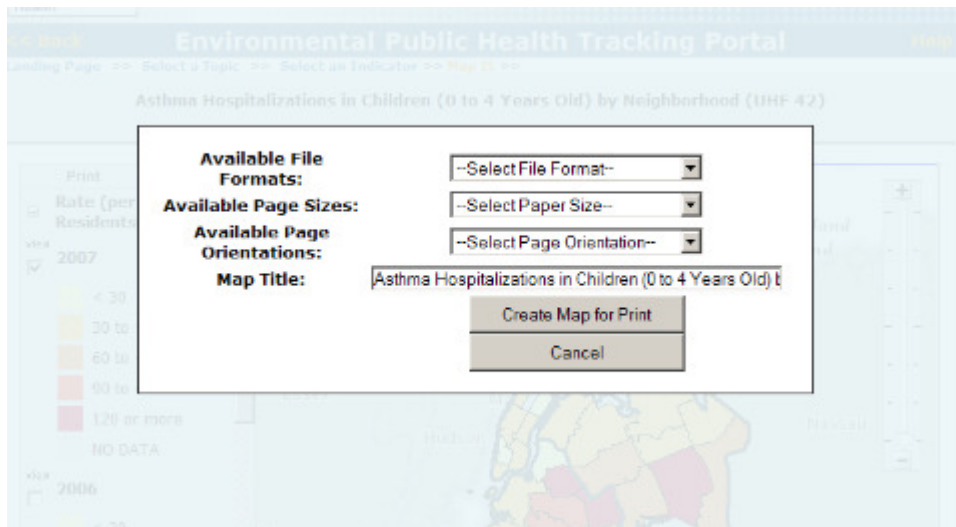


Looking at the map, you can see that certain neighborhoods in NYC have higher rates of asthma than others. You could also map the number of asthma hospitalizations in each neighborhood by scrolling down and clicking on the plus sign next to **Number**.

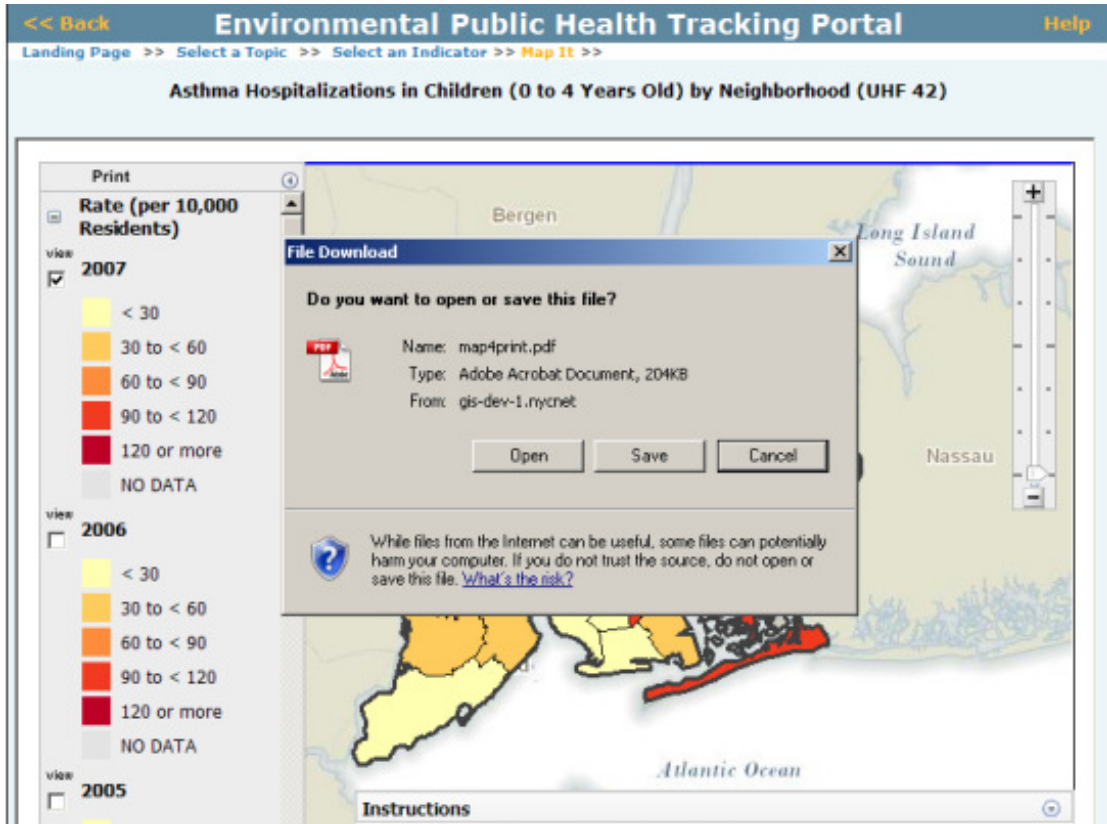


You will be asked to select either a pdf or jpeg file format, the size of the page you would like to print the map on, and the page orientation (either landscape or portrait).

You have the option to change the title that will show on the pdf version of the map.



8. Once you have selected all these options, you will need to save the file to your computer.



9. If you want to look at other indicators or make a chart or table of this indicator, click on **Select an Indicator** in the bread crumbs to view other functions available on the portal.

