

MANTOUX TUBERCULIN SKIN TESTING

TST ADMINISTRATION

PREPARATION

- 1) **Wash** hands and put gloves on
- 2) **Check** vial's expiration/opening date



- 3) **Place** patient's arm on flat surface exposing volar aspect of arm
- 4) **Locate** injection site (2-4 inches below elbow; no scars, bumps, veins)
- 5) **Clean** injection site with alcohol swab
- 6) **Wipe** top of vial with new alcohol swab
- 7) **Prepare** syringe and with vial on flat surface, insert syringe into vial
- 8) **Invert** vial, keeping needle tip below fluid level
- 9) **Pull** back plunger, drawing in slightly more than 0.1 ml PPD solution
- 10) **Remove** syringe from vial and tap lightly to dispel air bubbles, holding syringe point up and expel air/excess fluid, leaving exactly 0.1 ml PPD solution in syringe
- 11) **Return** vial to refrigerator when not in use or place on a cooling container when in use

INJECTION

- 12) **Stretch** skin of injection site with thumb of non-dominant hand
- 13) **Hold** syringe, with dominant hand, bevel up and insert needle intradermally 5-15 degree angle
- 14) **Inject** the PPD solution slowly, feeling firm resistance
- 15) **Remove** needle (DO NOT RECAP) and **discard immediately** in sharps container
- 16) **Ensure** 6-10 mm diameter wheal (measure wheal using TST ruler)



- 17) **Repeat** test 2 inches from site or on opposite arm if wheal < 6 mm; if still inadequate talk to supervisor

FINAL STEPS

- 18) **Educate** patient on possible reactions and care of TST site
- 19) **Document** test (including 2nd if done)
- 20) **Schedule** reading date and explain importance of returning in 48-72 hours



PATIENT

EDUCATION

SHOULD BE DONE

TO EXPLAIN THE

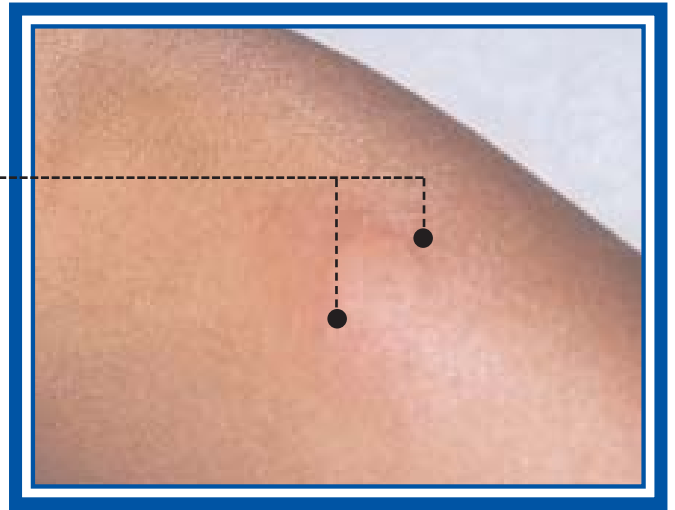
PREPARATION,

INJECTION AND

FINAL STEPS

TST READING

- 1) **Inspect** -- visually for reaction at injection site
- 2) **Palpate** -- for hard dense raised formation (induration)
- 3) **Mark** -- two edges of the induration with a dot, using a black water mark pen
- 4) **Measure** -- induration (not redness) transversely, from one marked edge to the other, using the TST ruler
- 5) **Interpret** -- positive/negative based on size of induration and risk factors
- 6) **Explain** -- meaning of positive/negative results, follow-up needed and give literature and copy of results
- 7) **Document** -- results



**ALWAYS WASH HANDS AND
CHANGE GLOVES AFTER EACH PATIENT**



New York City Department of Health and Mental Hygiene
Bureau of Tuberculosis Control Education and Training
For information about TB call 311
Or visit our website @www.nyc.gov/health

MARCH 2004