

Diseases Caused by Smoking

Cancers

Oral pharynx

Larynx

Esophagus

Lung

Acute myeloid
leukemia

Stomach

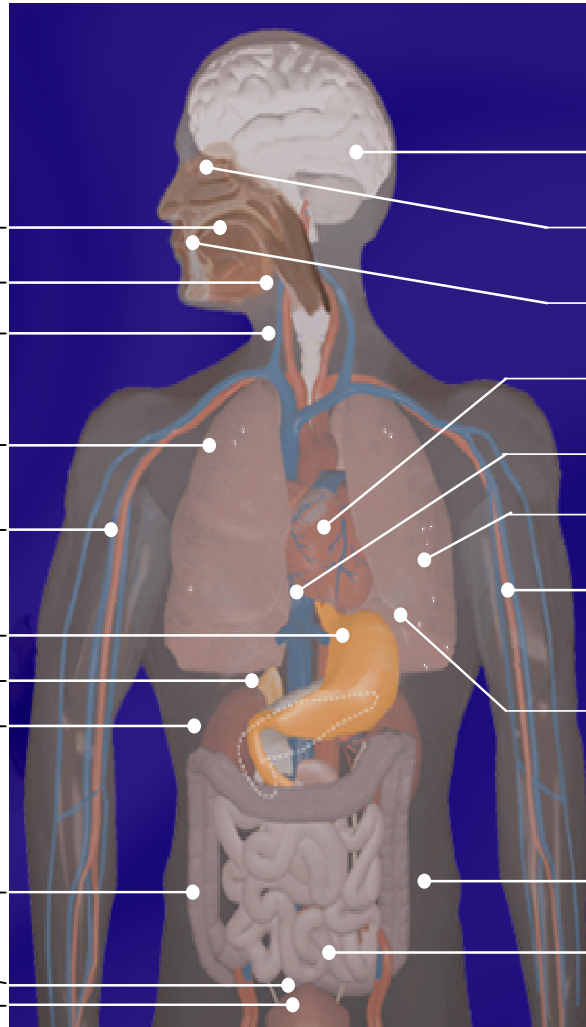
Pancreas

Kidney and
Ureter

Colon

Bladder

Cervix



Chronic Diseases

Stroke

Blindness, Cataracts

Periodontitis

Coronary heart disease

Aortic aneurysm

Pneumonia

Atherosclerotic peripheral
vascular disease

Chronic obstructive pulmonary
disease (COPD), asthma, and
other respiratory effects

Hip fractures

Reproductive effects in women
(incl. reduced fertility)

Source: The health consequences of smoking: a report of the Surgeon General. 2004.