

Primary Care Planning Influenza Season Fall 2009 and Winter 2010

Bindy Crouch, MD, MPH

Primary Care Emergency Preparedness Medical
Coordinator

Healthcare Emergency Preparedness Program

Pandemic Influenza Services Locator

www.nyc.gov/flu

Expected Date of Availability:
October 1, 2009



NEW YORK CITY DEPARTMENT of HEALTH and MENTAL HYGIENE

Sign up for Health Emails

Influenza Services Locator

This website can be used to locate dispensing sites providing the services listed below.
Please check the box(es) for the service(s) you are looking for. Please also select the borough or enter your zip code and click Search.
For Seasonal Flu, Please [click](#) here.

1. Select Service(s)

- Vaccination
 - For H1N1 Flu ?
- Treatment
 - Flu Treatment ?
 - Antibiotics ?
 - General Pharmacy ?
 - Flu Medication ?

2. Select Borough or Enter NYC Zip Code

- Bronx Brooklyn Manhattan Queens Staten Island Neighboring Counties



OR

NYC Zip Code:

3. Search

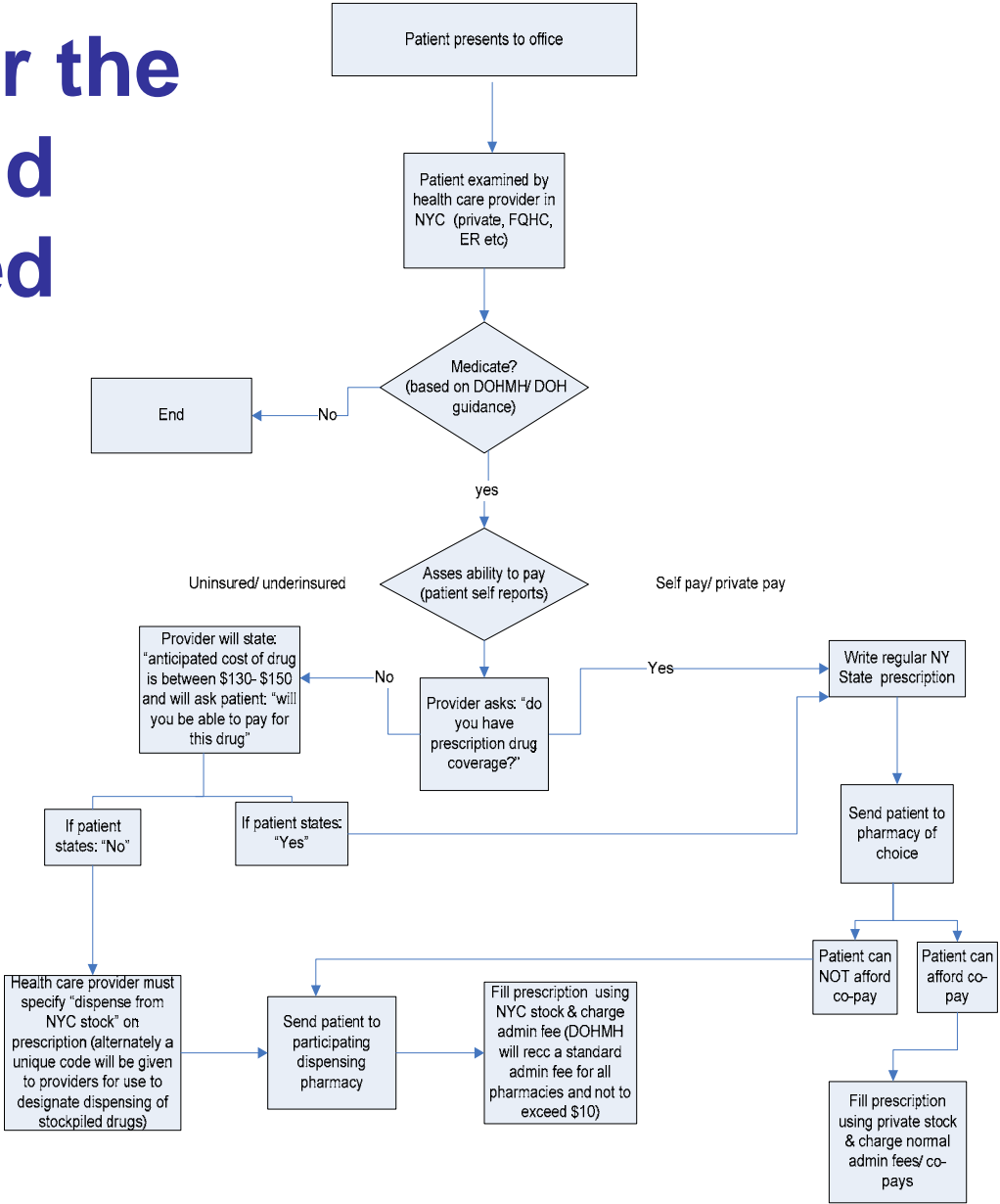
Services Available

- Seasonal Influenza Vaccine
- H1N1 Vaccine
- Flu Diagnostic and Treatment Centers
- Pharmacy Services
- Antiviral Distribution*

Dynamic System – Services can be turned on and off when with changes in availability

*Available when there is a breakdown in the commercial supply of antivirals

Antivirals for the Under and Uninsured



Note: this algorithm is for draft purposes only and is pending approval by the DOHMH H1N1 Policy Group. All wording set forth in this algorithm must be approved. Pharmacy buy - in is underway pending approval by the DOHMH H1N1 Policy Group . If approved, a one page instruction and FAQ sheet will be made available for providers and pharmacies.



Bindy Crouch, MD, MPH

Primary Care Emergency Preparedness

bcrouch1@health.nyc.gov

www.nyc.gov/flu