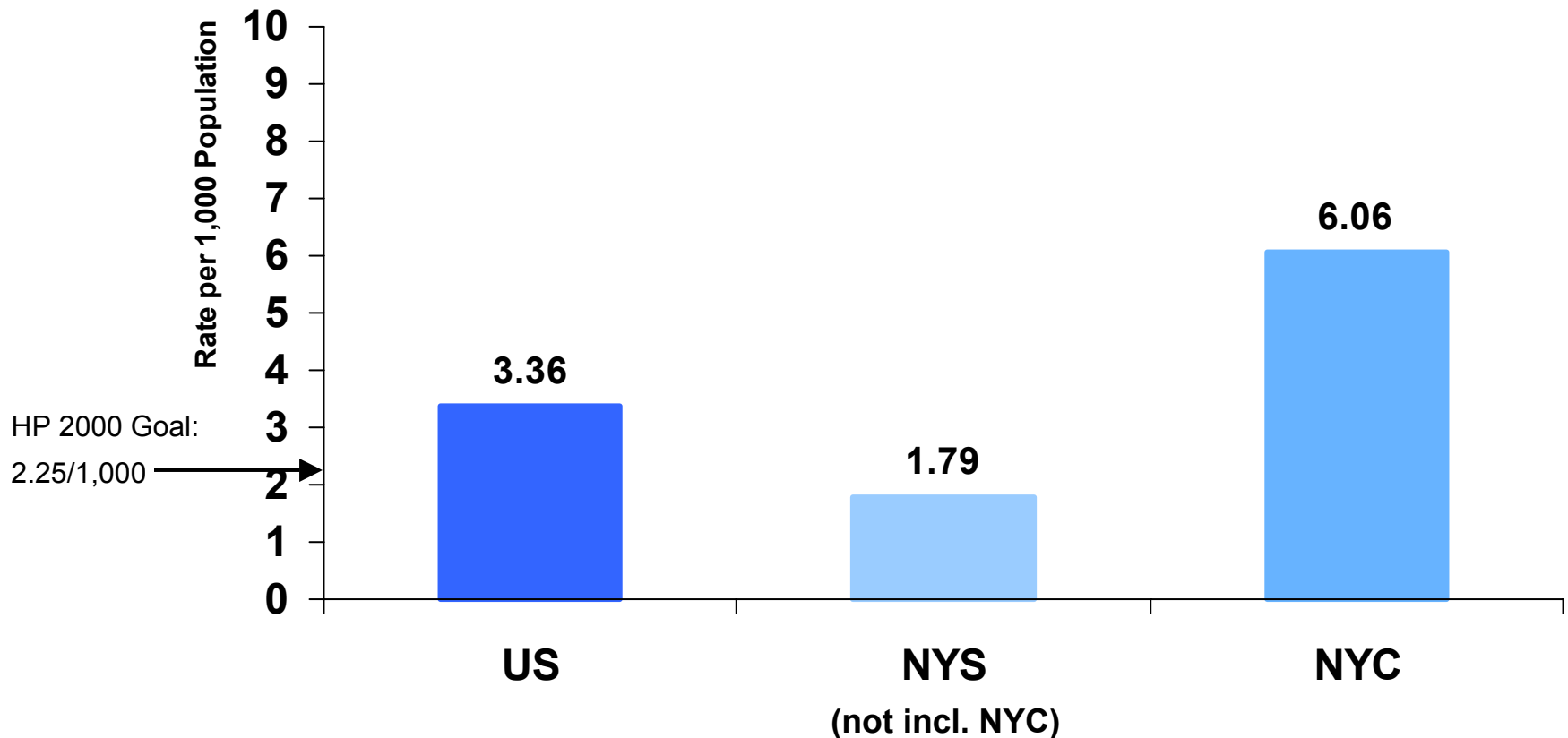


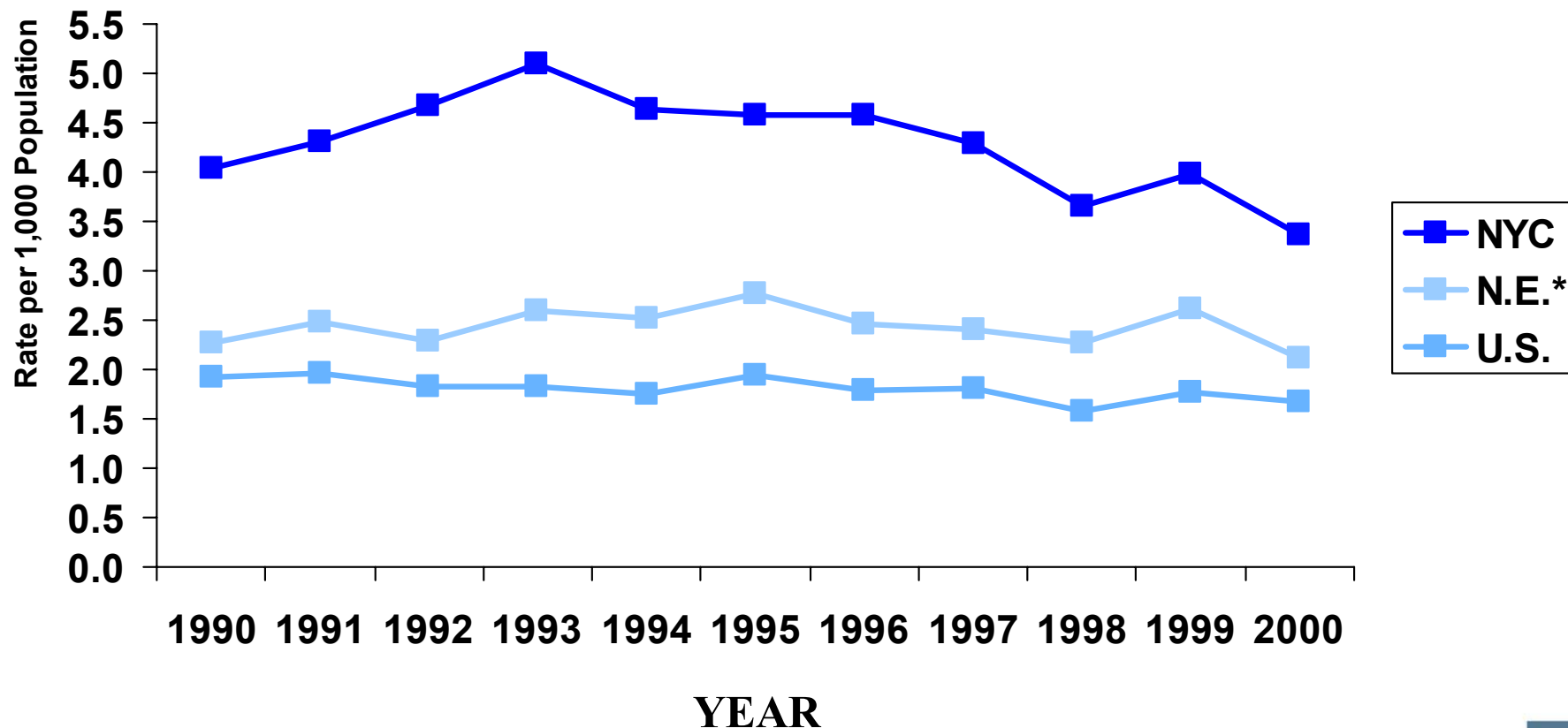
CHAPTER 1

HOSPITALIZATIONS

Comparison of Asthma Hospitalization Rates in Children Aged 0-14 in the U.S., NYS and NYC, 2000

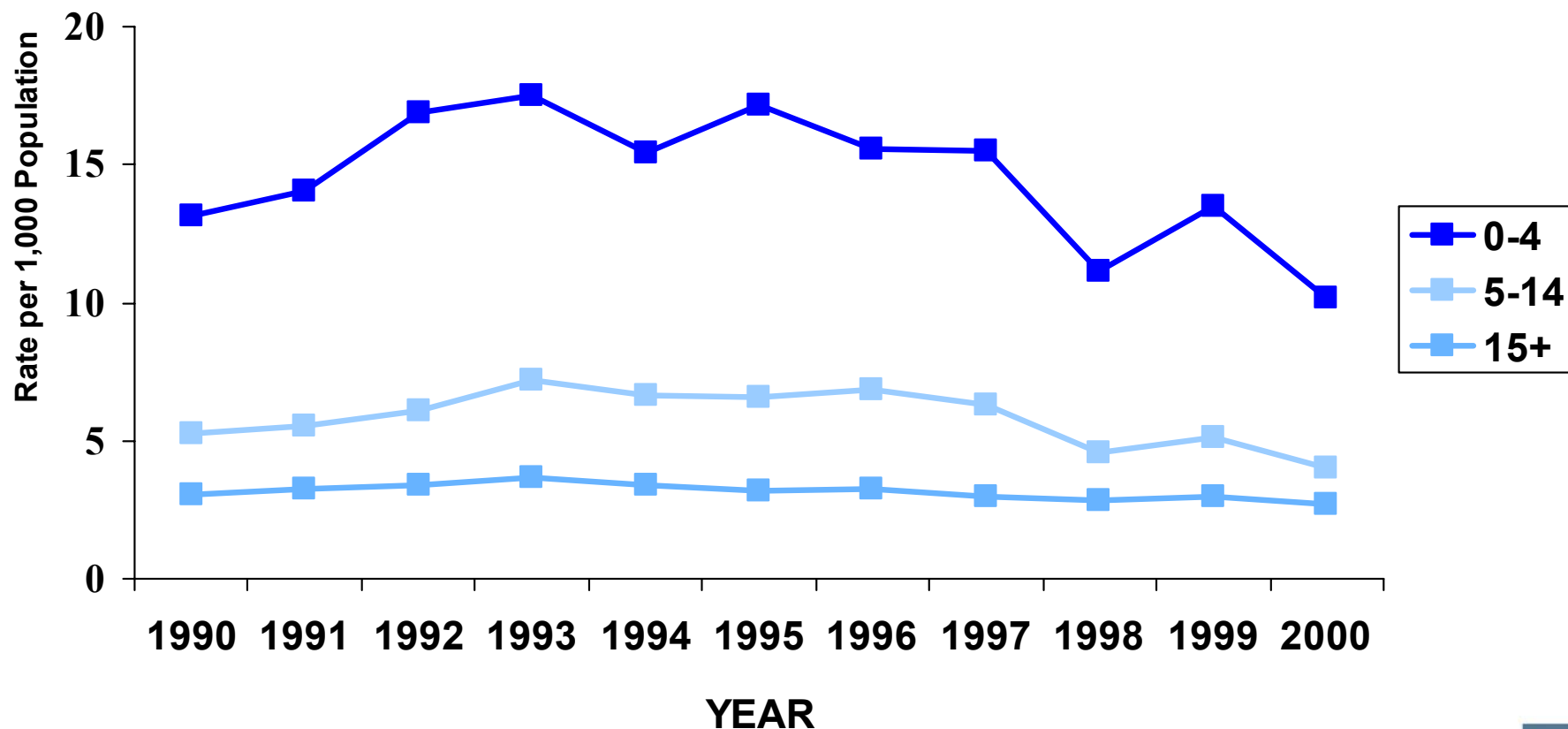


Trends in Asthma Hospitalization Rates, U.S., Northeast U.S.*, New York City, All Ages, 1990-2000

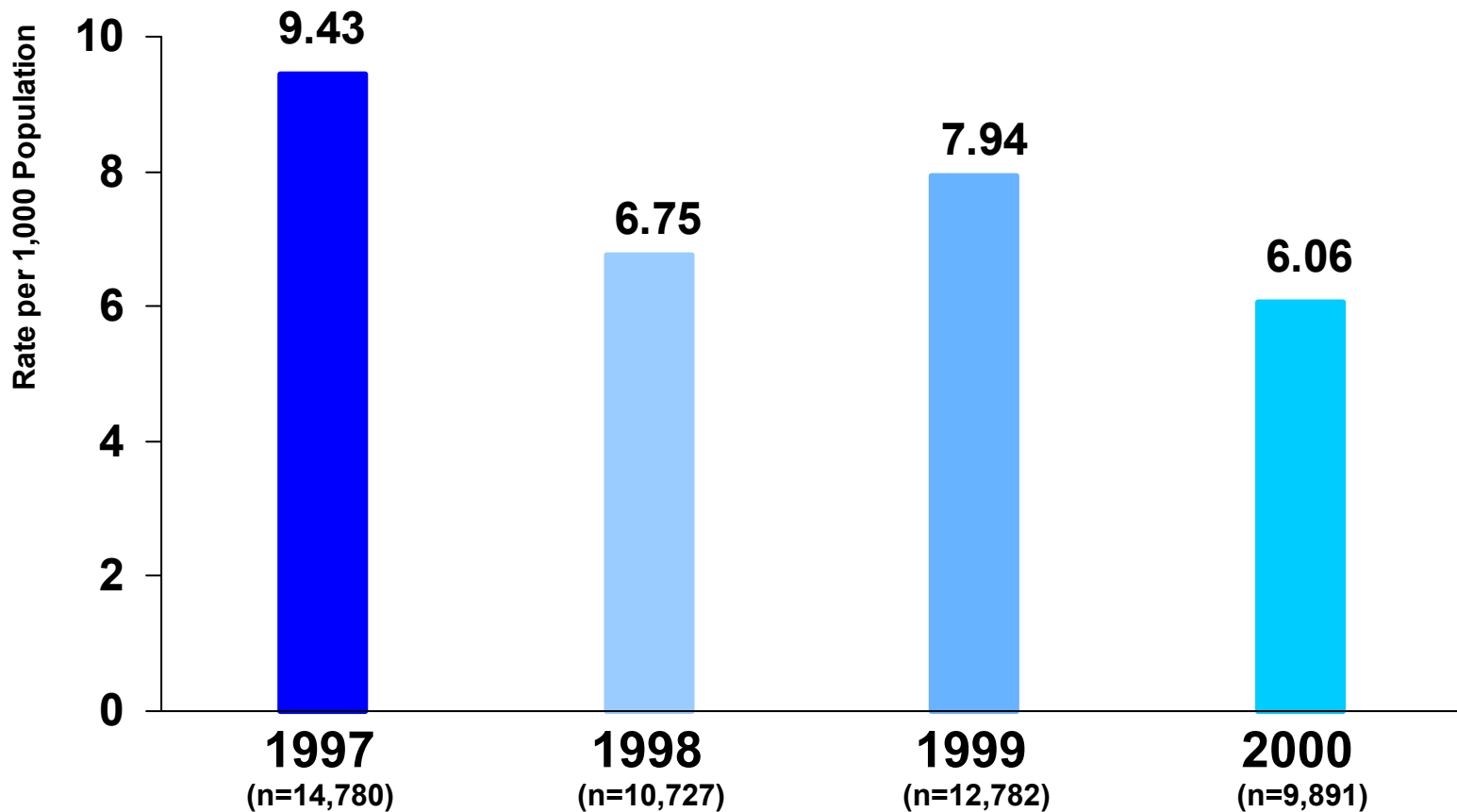


*Northeast region of U.S.: Connecticut, Maine, Massachusetts, New Hampshire, New Jersey, New York, Pennsylvania, Rhode Island and Vermont.

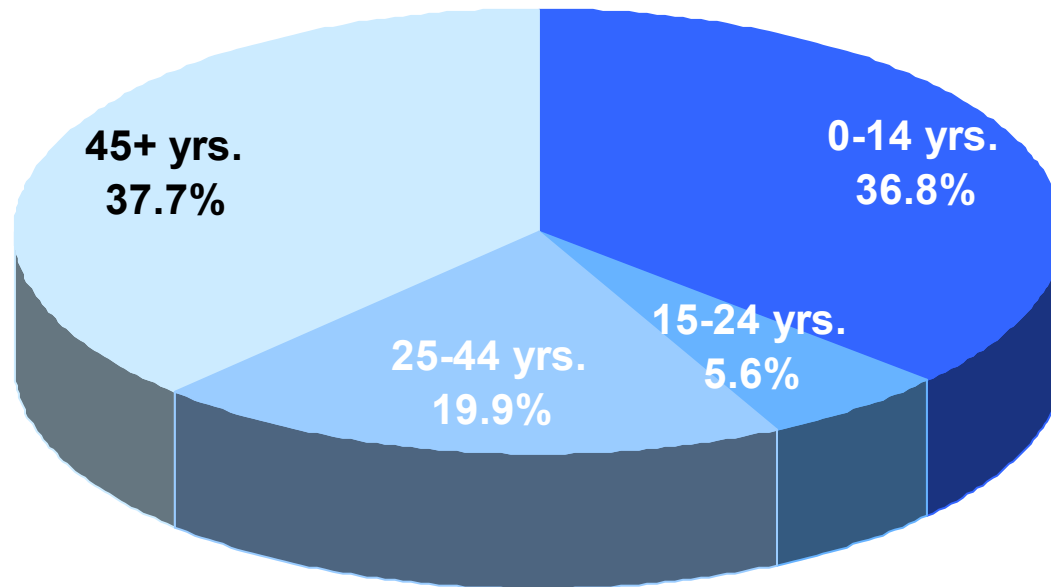
Trends in Asthma Hospitalization Rates by Age, New York City, 1990-2000



Comparison of Asthma Hospitalization Rates in Children Aged 0-14, New York City, 1997-2000

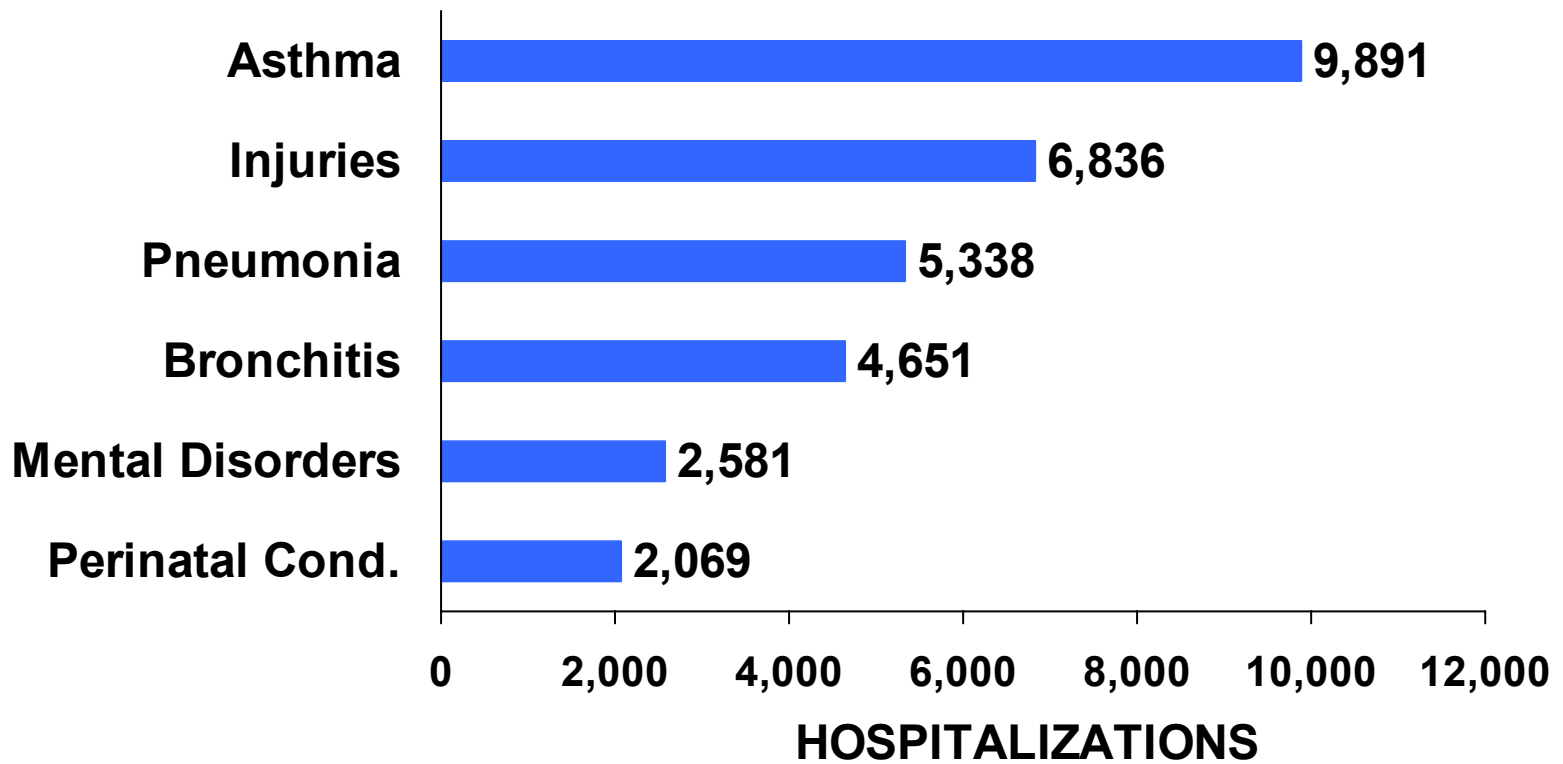


Percent Distribution of Asthma Hospitalizations by Age Group, New York City, 2000

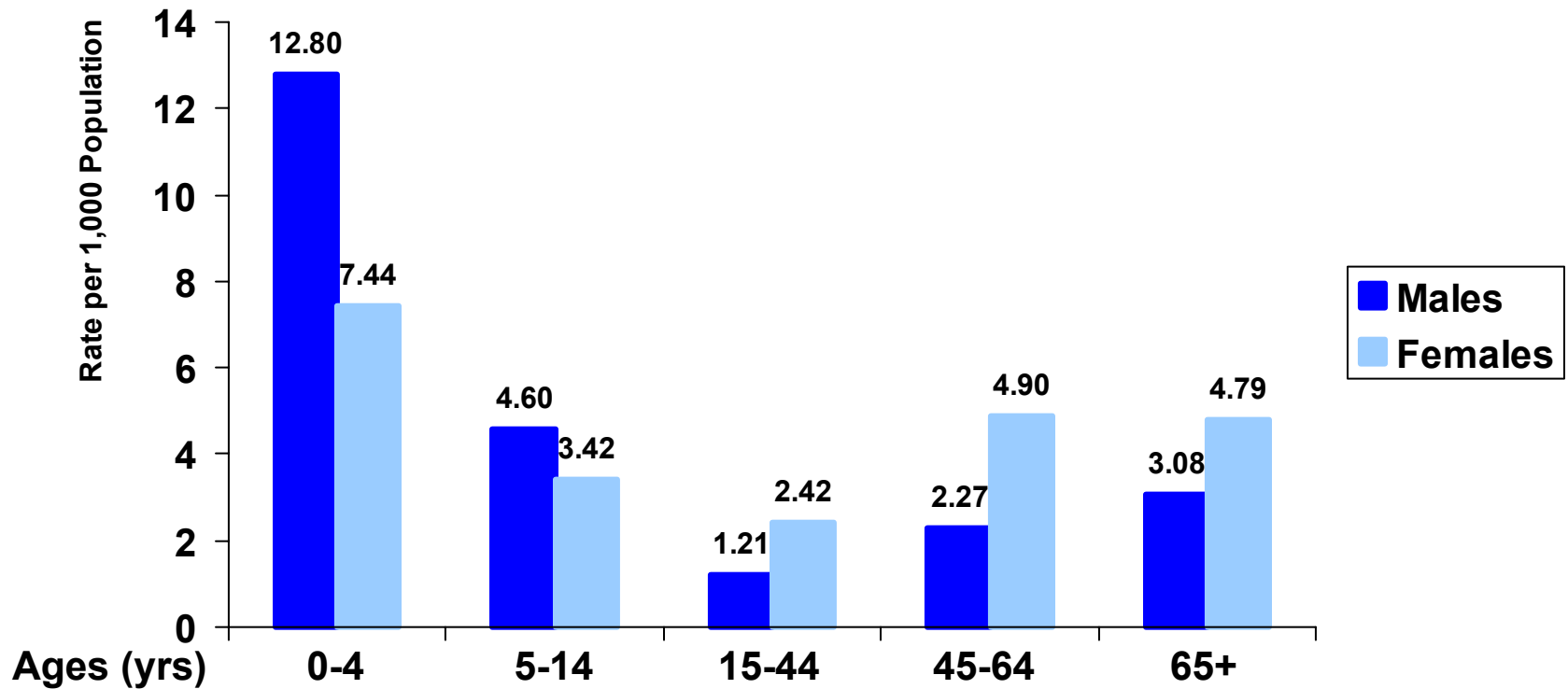


N=26,868 Hospitalizations

Leading Causes of Hospitalization in Children Aged 0-14, New York City, 2000

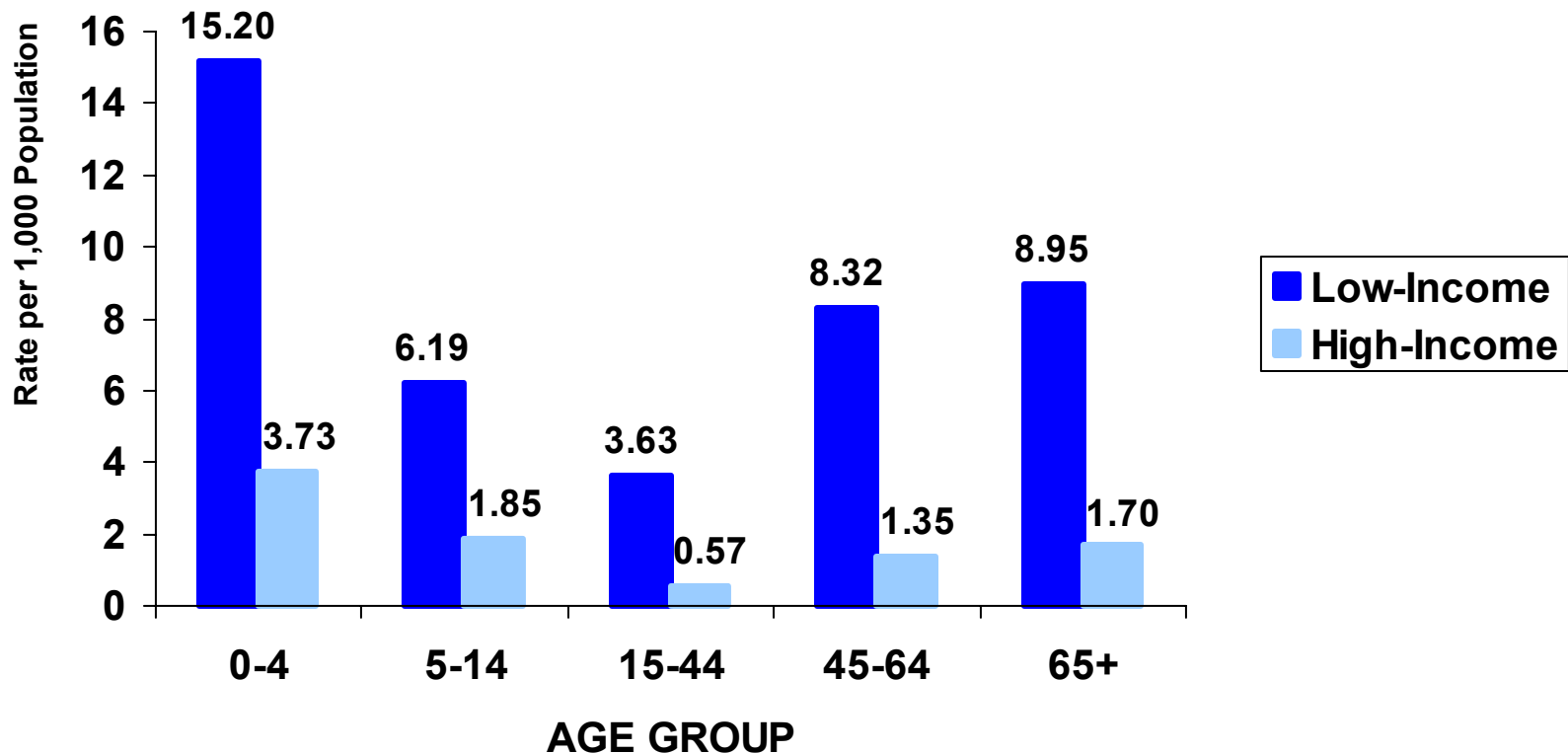


Asthma Hospitalization Rates by Age and Gender, New York City, 2000



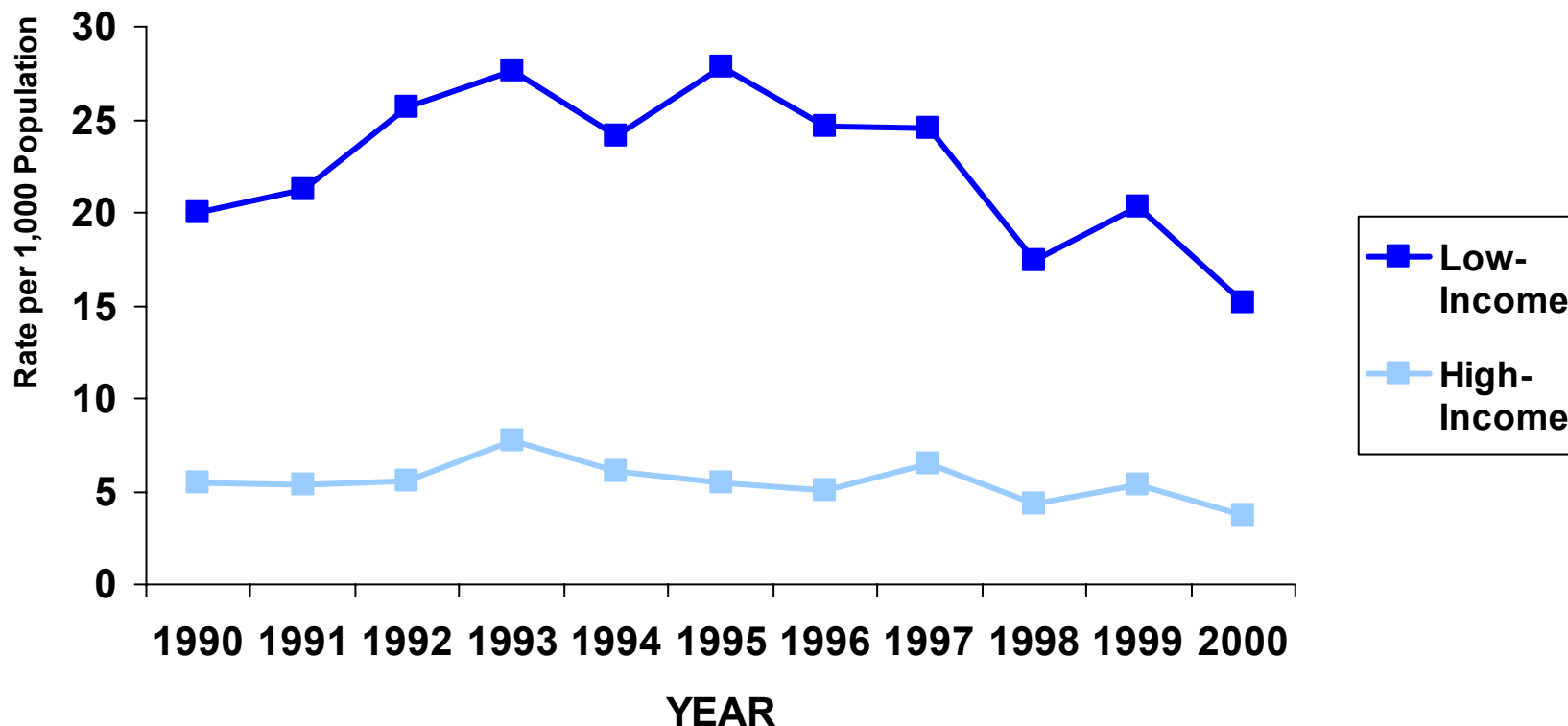
■ Males (n)	3,538	2,561	2,200	1,756	1,108
■ Females (n)	1,965	1,827	4,642	4,506	2,765

Asthma Hospitalization Rates by Age, High- and Low-Income ZIP Code Areas*, New York City, 2000



*High-Income: top 20% of NYC's ZIP Code areas, as determined by 2000 median income.
Low-Income: bottom 20% of NYC's ZIP Code areas, as determined by 2000 median income.

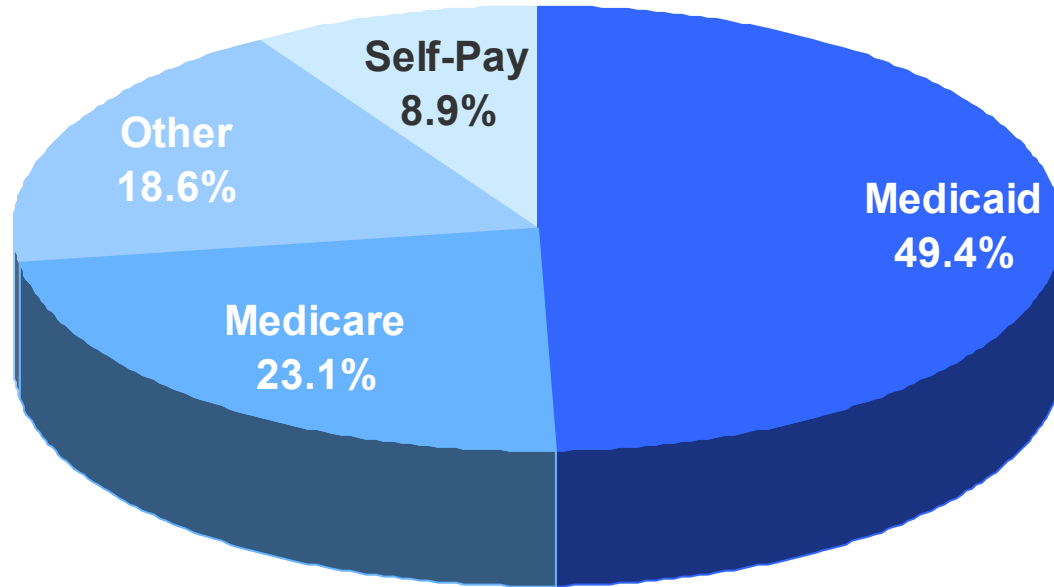
Trends in Asthma Hospitalization Rates, High- and Low-Income ZIP Code Areas*, Children Aged 0-4, New York City, 1990-2000



*High-Income: top 20% of NYC's ZIP Code areas, as determined by 2000 median income.

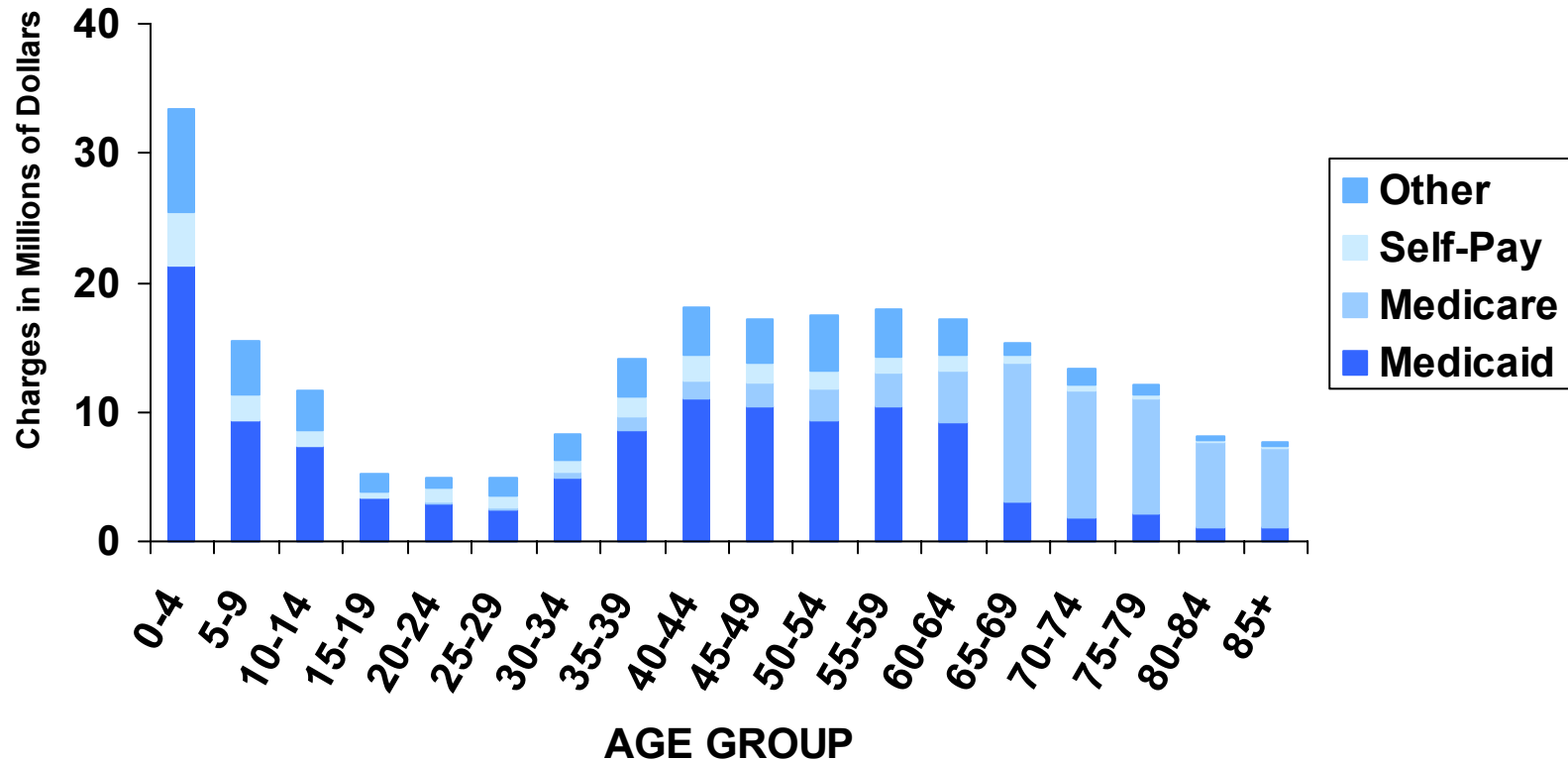
Low-Income: bottom 20% of NYC's ZIP Code areas, as determined by 2000 median income.

Percent Distribution of Charges for Asthma Hospitalizations by Payor, New York City, 2000



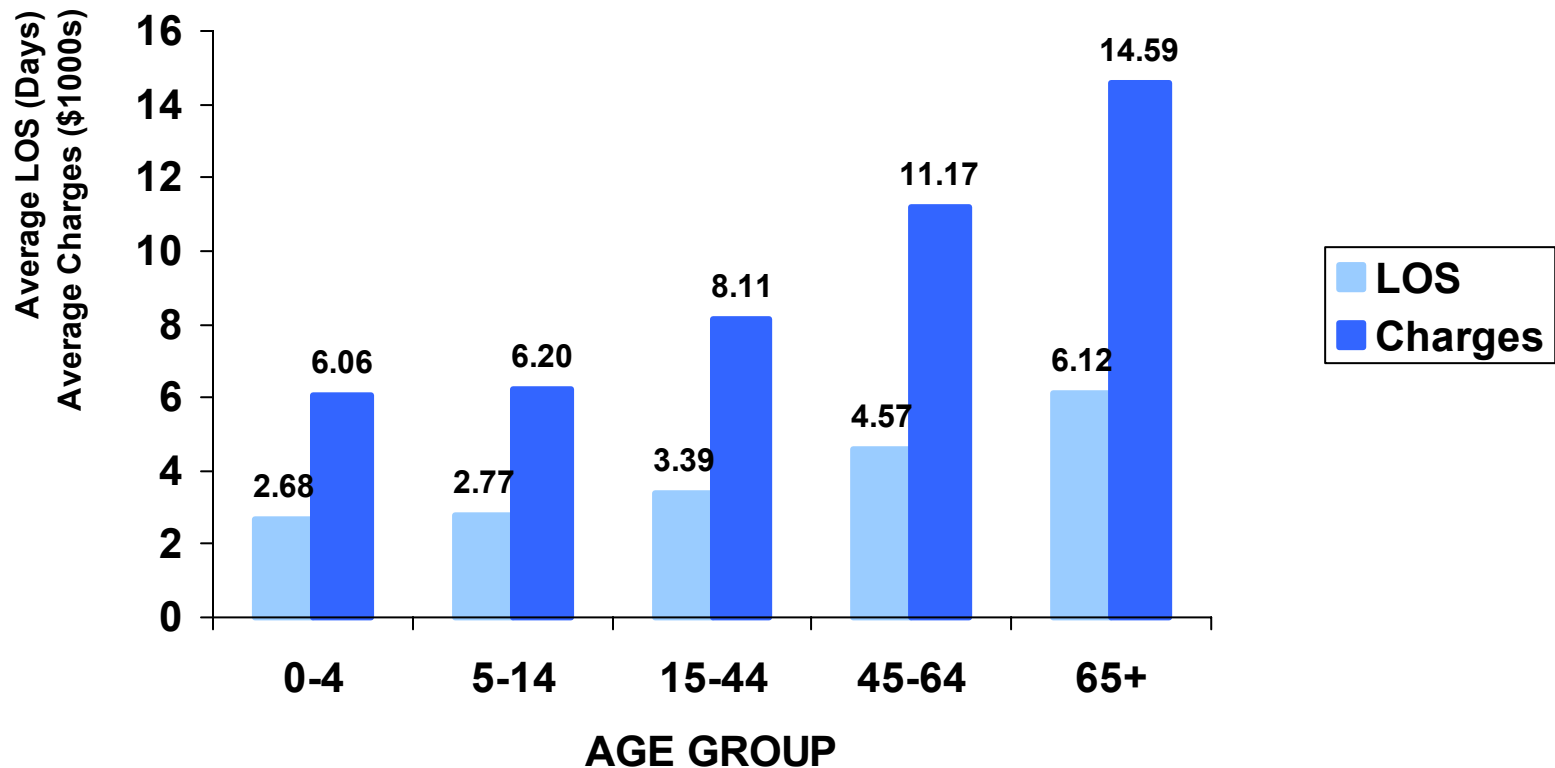
Total Charges=\$242,454,056

Total Charges for Asthma Hospitalizations by Payor and Age, New York City, 2000

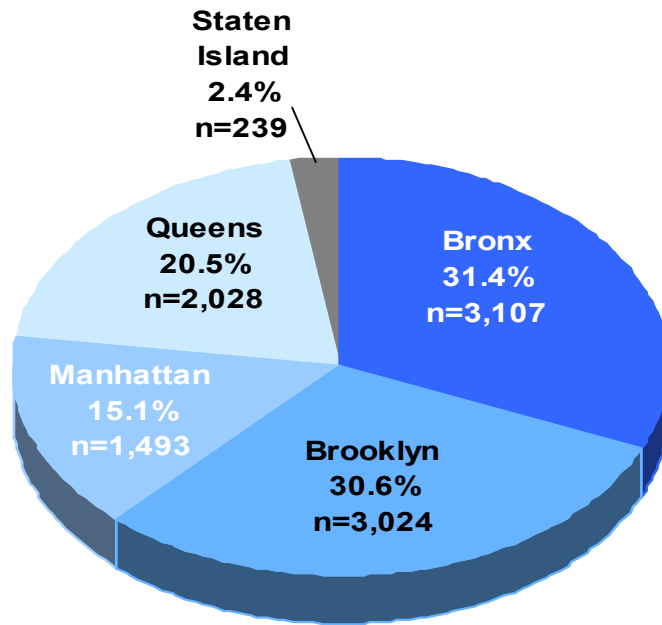


Total Charges=\$242,454,056

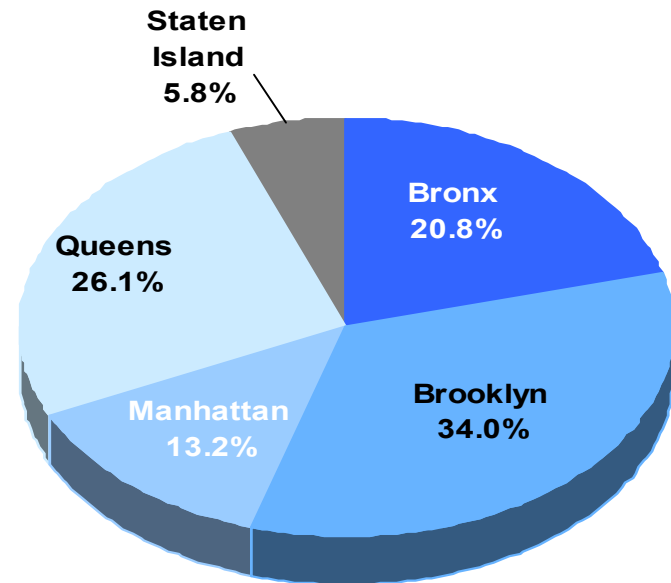
Average Length of Stay (LOS) and Average Charges per Asthma Hospitalization by Age, New York City, 2000



Percent Distributions of Asthma Hospitalizations and Population by Borough, Children Aged 0-14, New York City, 2000

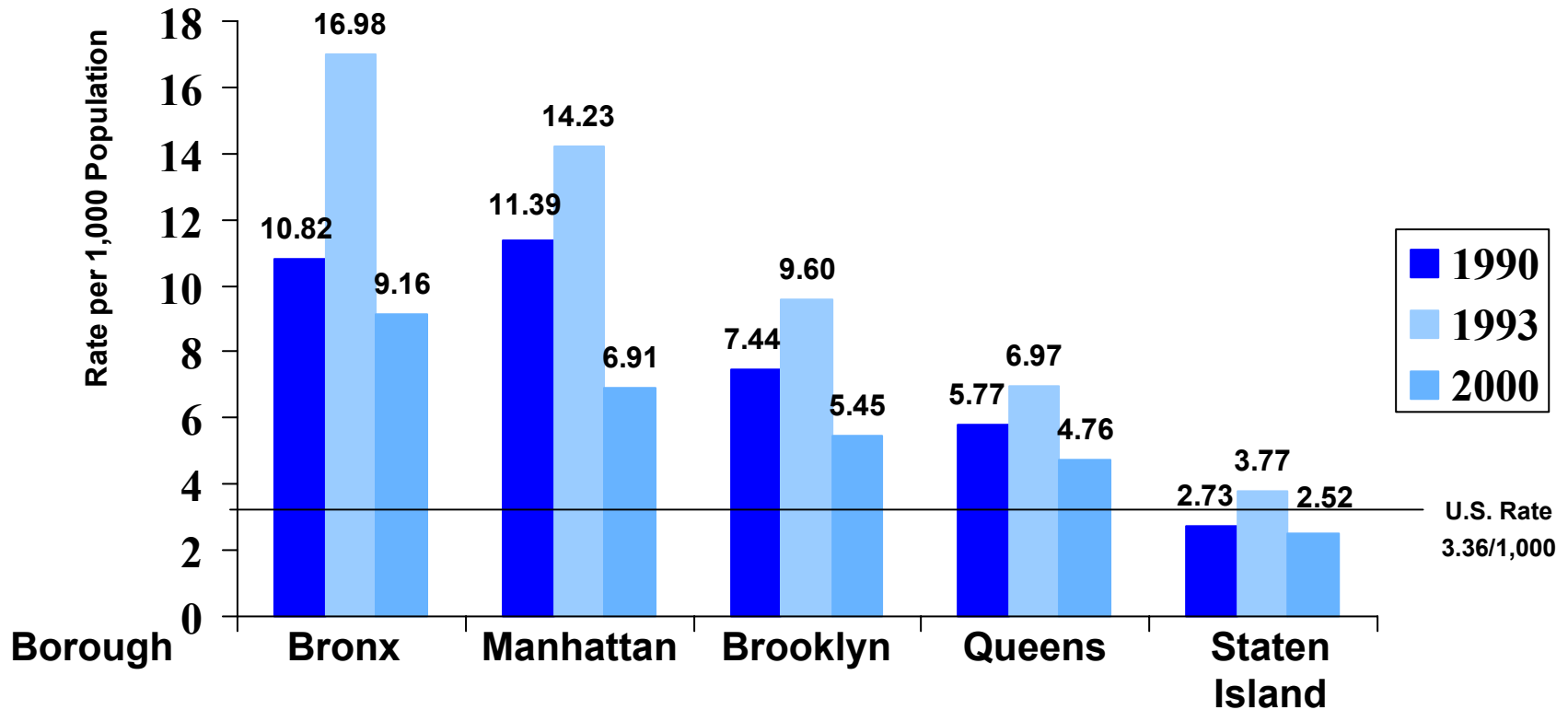


N=9,891 Hospitalizations



N=1,631,855 Children

Comparison of Asthma Hospitalization Rates by Borough, Children Aged 0-14, New York City, 1990, 1993 and 2000

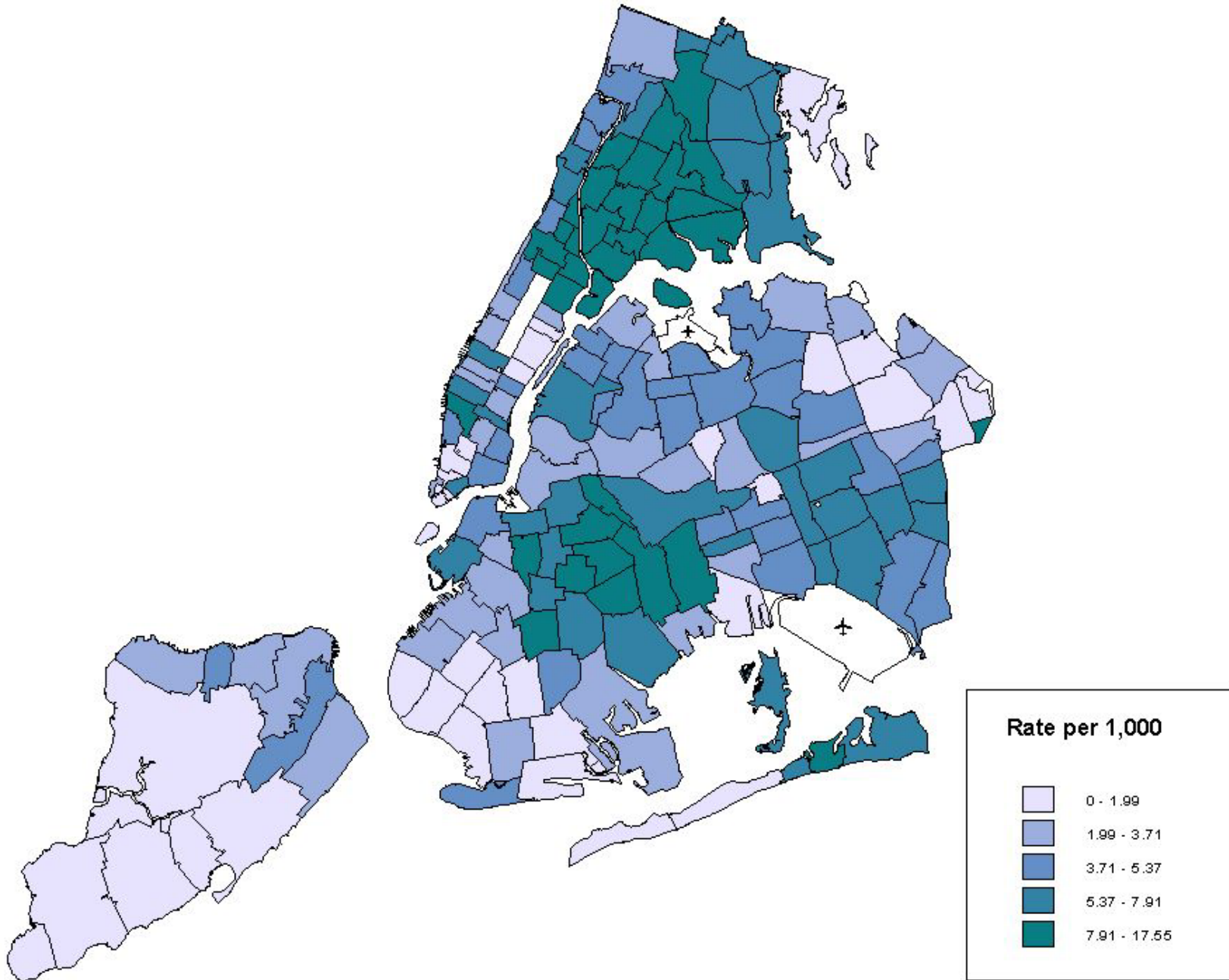


■ 1990 (n)	3,061	3,781	2,355	1,963	215
■ 1993 (n)	5,092	5,016	2,983	2,552	315
■ 2000 (n)	3,107	3,024	1,493	2,028	239

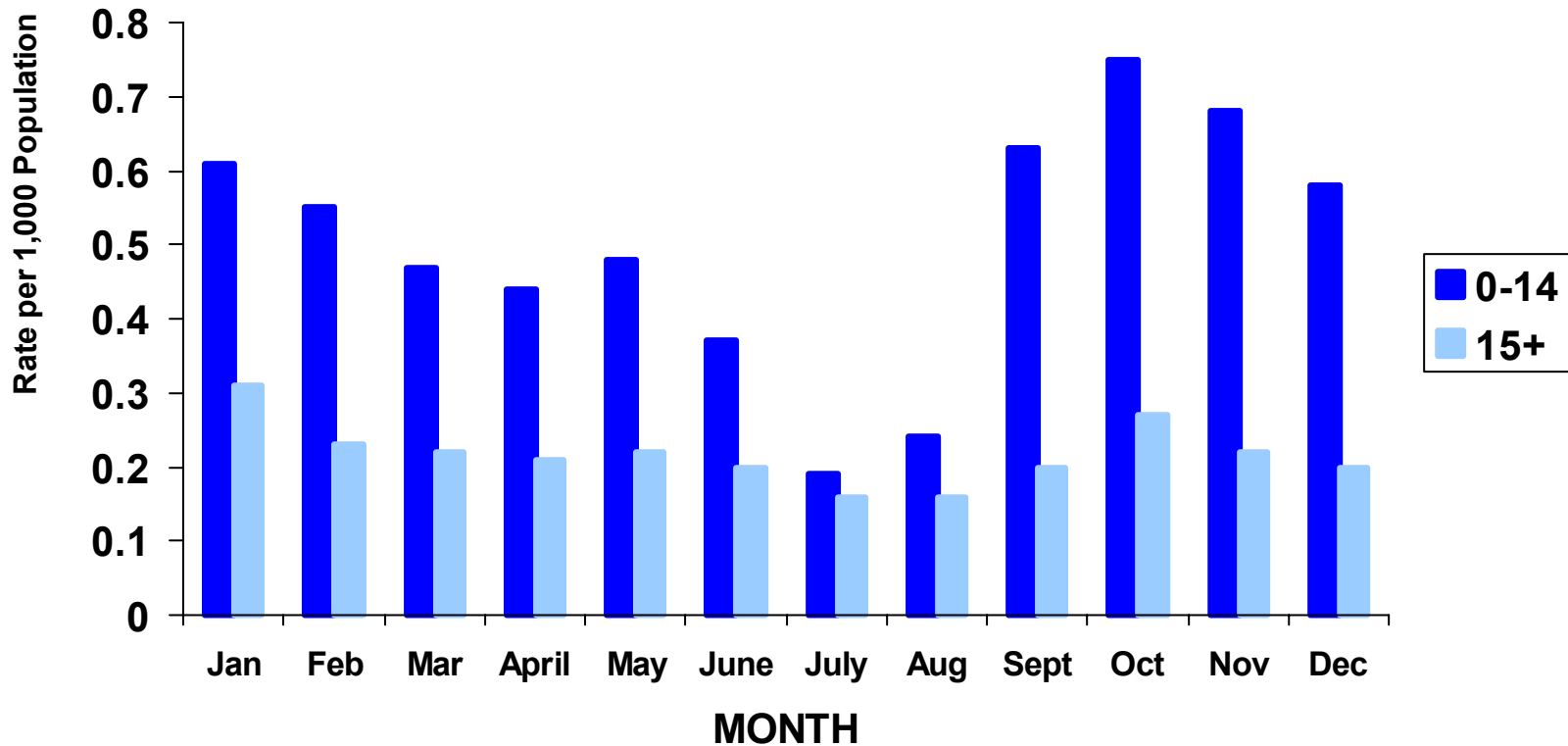
UHF Chart

(Table 5)

Asthma Hospitalization Rates by ZIP Code Area, Children Aged 0-14, New York City, 2000



Hospital Admission Rates* for Asthma by Month and Age, New York City, 2000

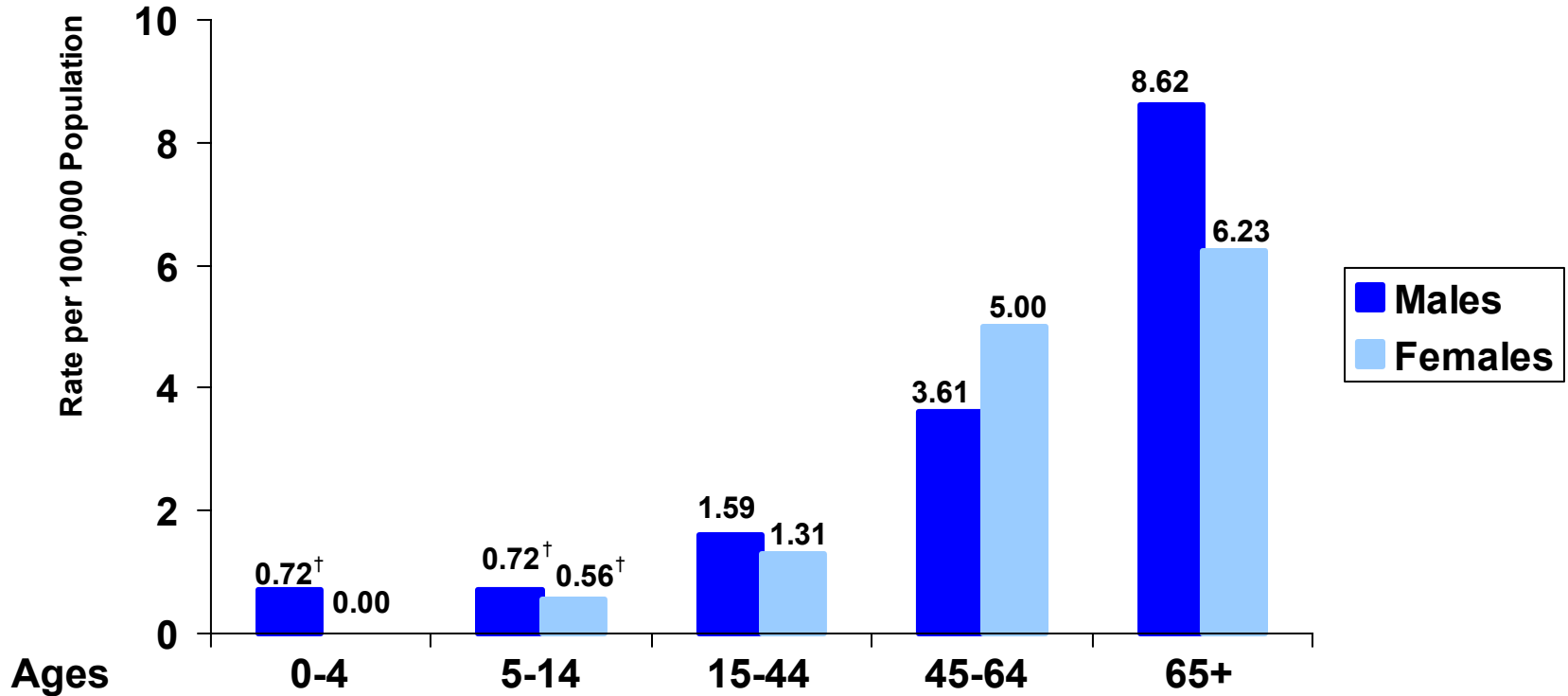


*Based on date of admission; totals vary slightly compared to totals calculated based on date of discharge.

CHAPTER 2

MORTALITY

Asthma Mortality Rates* by Age and Gender, New York City, 2000



Males (n)	2	4	29	28	31
Females (n)	0	3	25	46	36

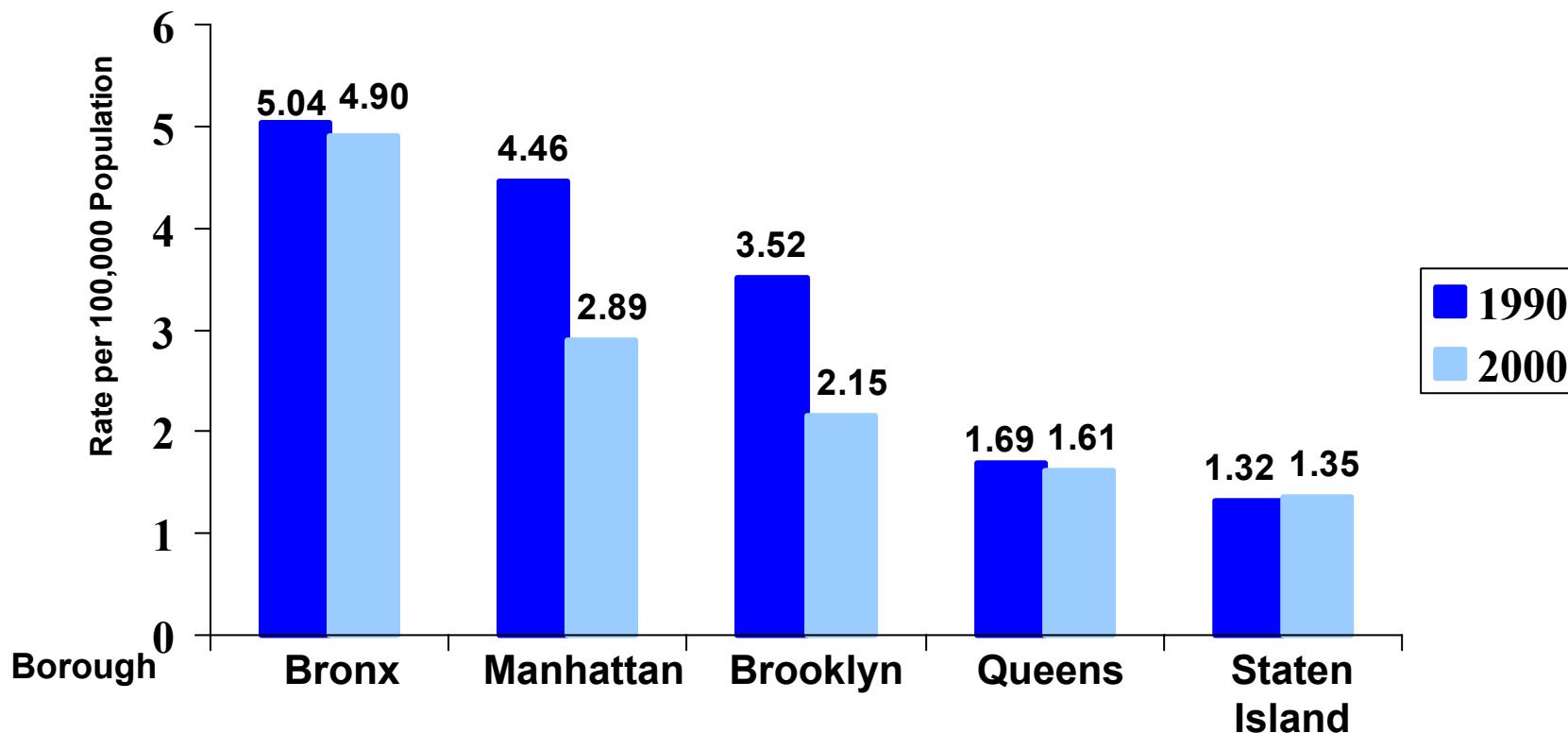
AGE GROUP

Total NYC Deaths (All Causes):
Males = 29,586
Females = 31,253

*Rates based on small numbers of asthma deaths may fluctuate from year to year resulting in unstable rates, especially among children; therefore, age and gender comparisons to 1997 are unreliable and are not presented.

[†]Relative standard error of the rate is >30% indicating low reliability.

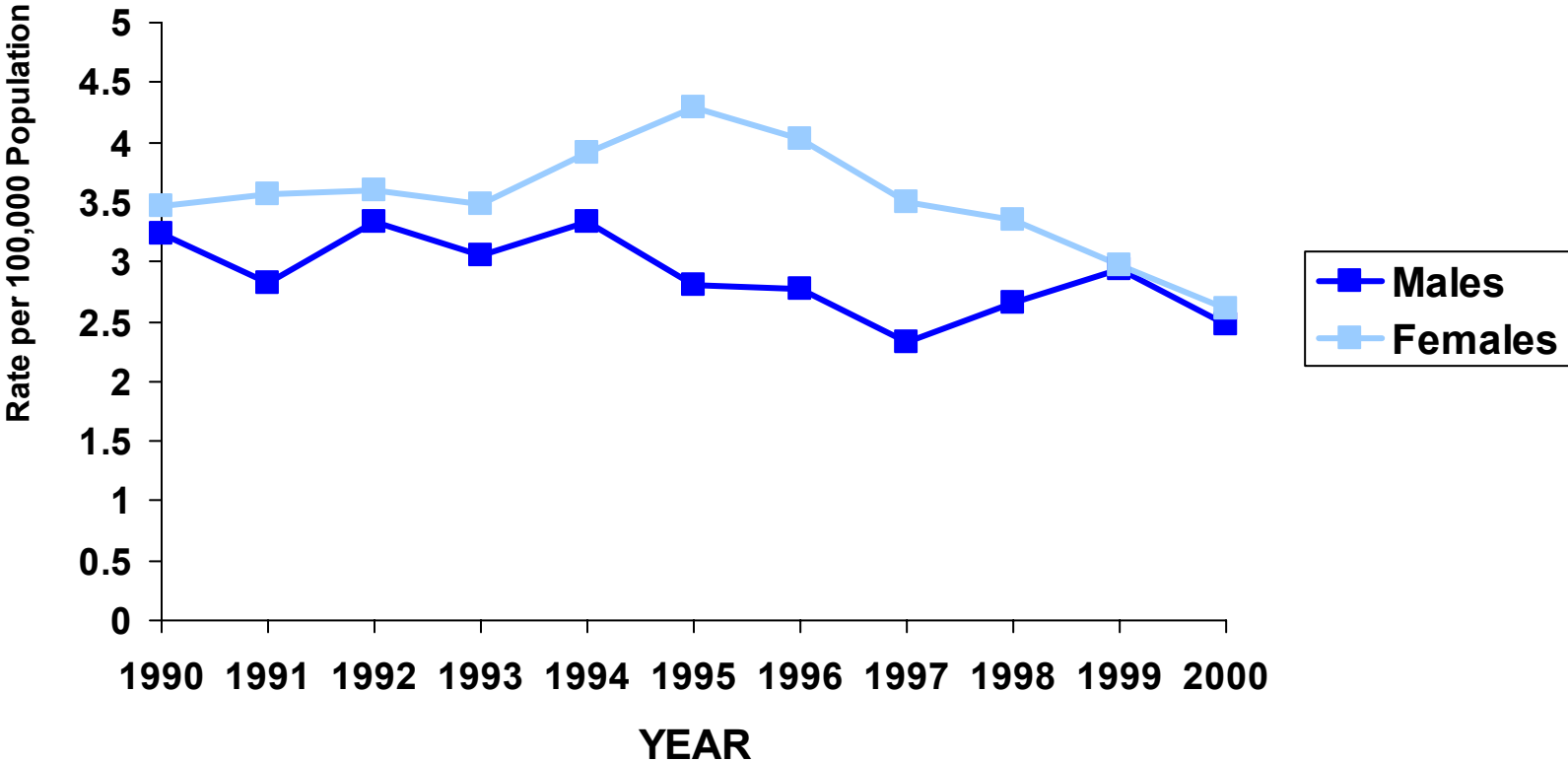
Comparison of Asthma Mortality Rates by Borough, All Ages, New York City, 1990 and 2000



■ 1990 (n)	61	81	66	33	5
■ 2000 (n)	65	53	44	36	6

BOROUGH

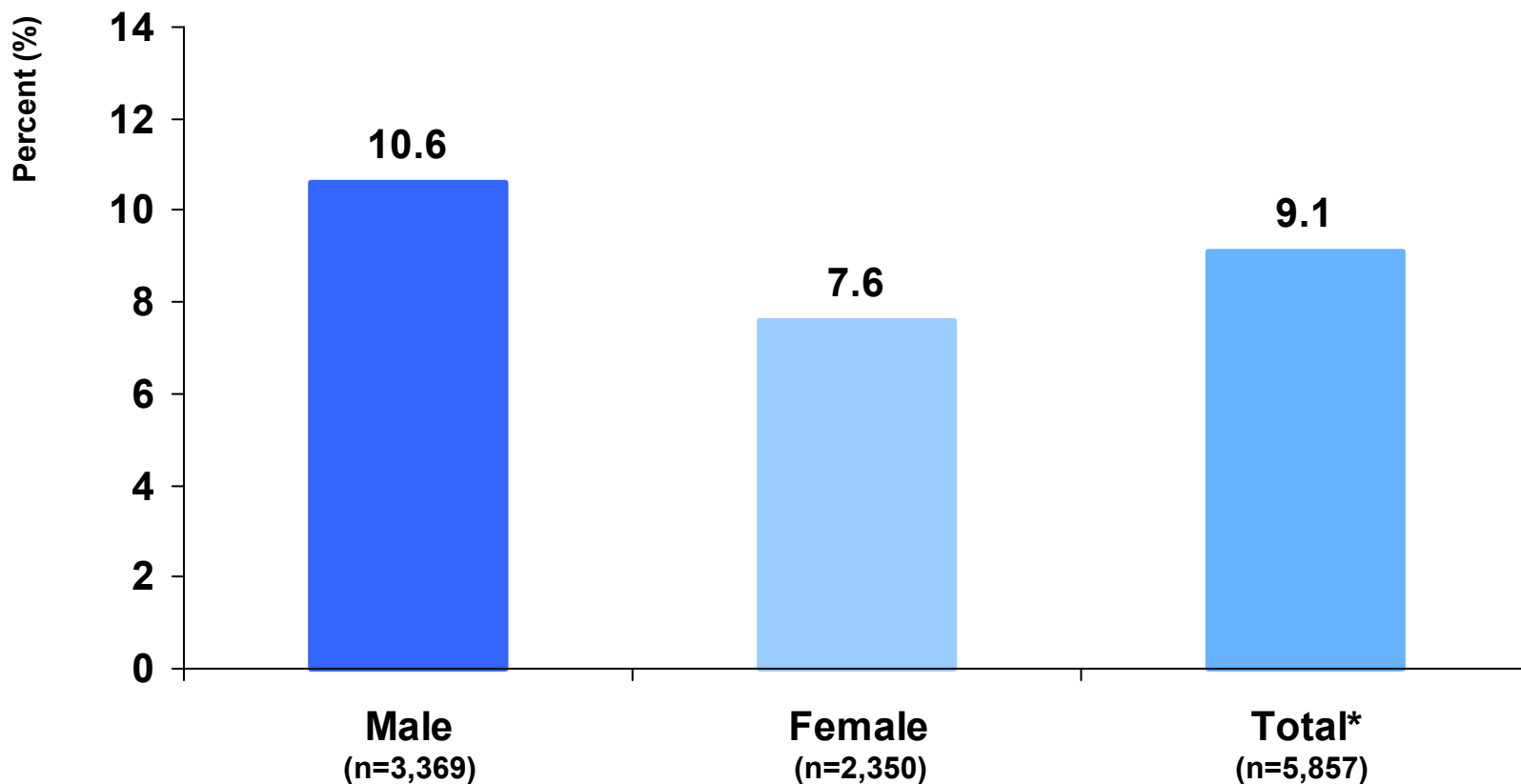
Trends in Asthma Mortality Rates by Gender, All Ages, New York City, 1990-2000



CHAPTER 3

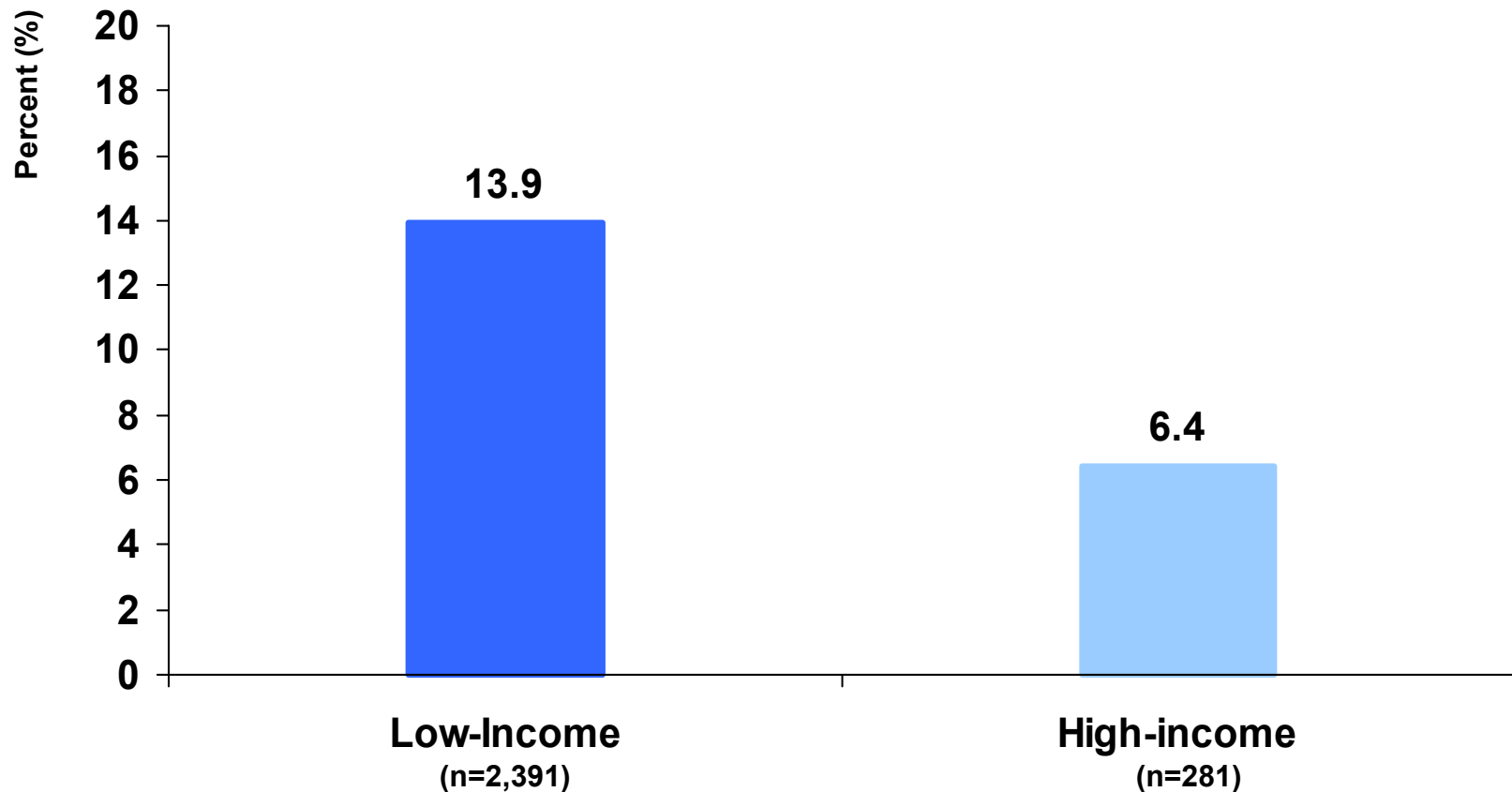
SCHOOL-BASED PREVALENCE

School-Based Asthma Prevalence by Gender for Children 4-5 Years Old, 1999



*Includes children missing gender information.

School-Based Asthma Prevalence by High- and Low-Income Zip Code Areas*† for Children 4-5 Years Old, 1999

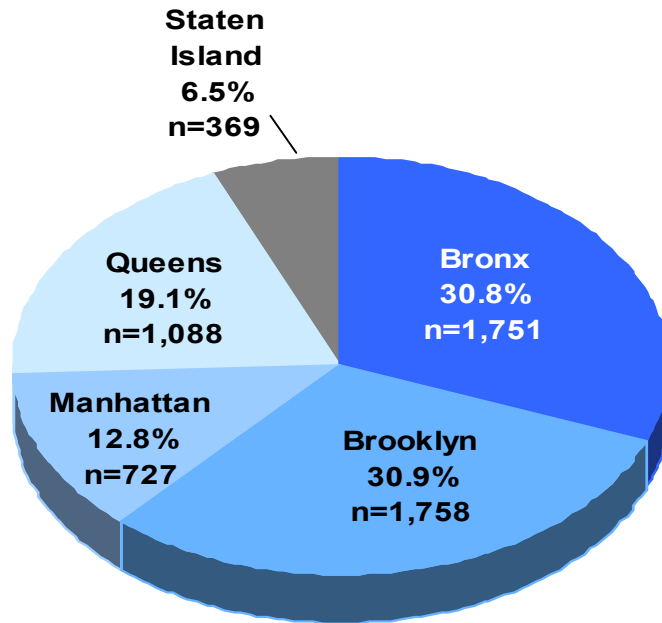


*High-Income: top 20% of NYC's ZIP Code areas, as determined by 2000 median income.

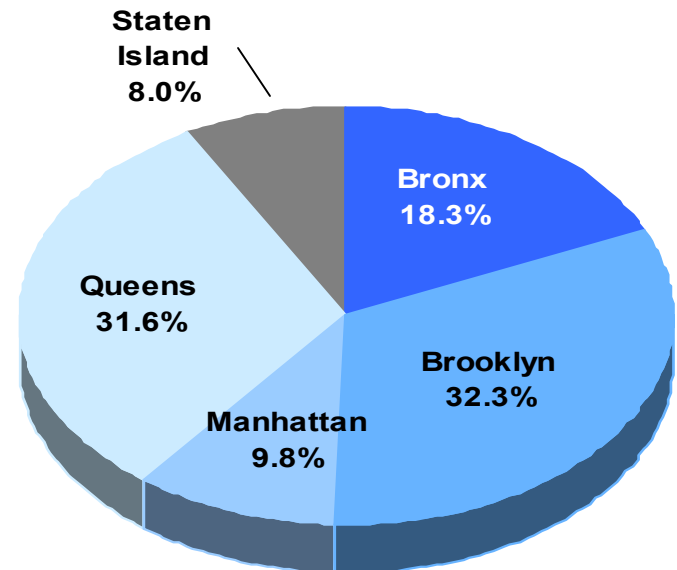
Low-Income: bottom 20% of NYC's ZIP Code areas, as determined by 2000 median income.

†Excludes children missing ZIP Code information.

Percent Distributions of School-Based Asthma Prevalence and Children 4-5 Years Old by Borough*, 1999



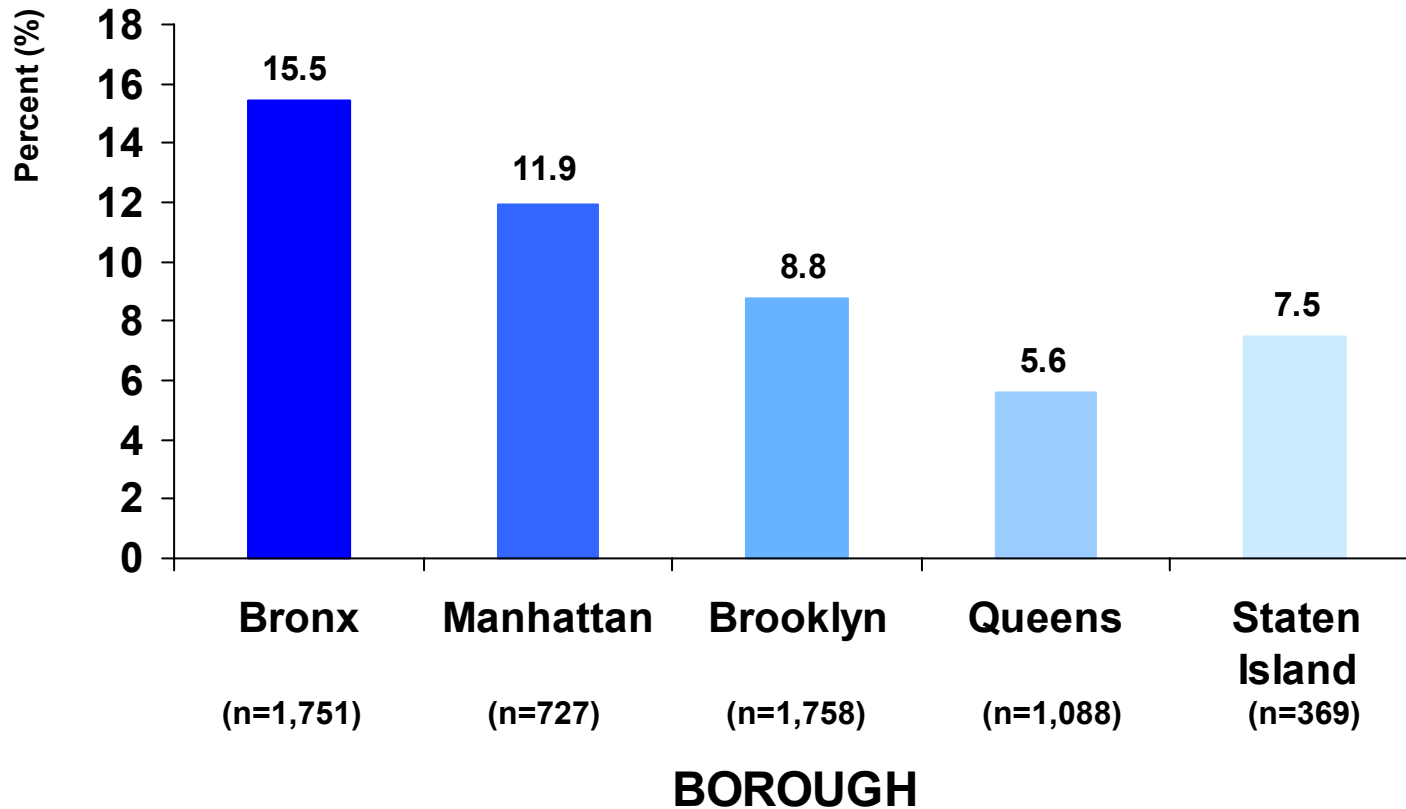
N=5,693 children aged 4-5 diagnosed with asthma



N=61,870 children aged 4-5 who completed their School Health New Admission Examination Form in 1999

*Excludes children missing information on borough of residence.

School-Based Asthma Prevalence by Borough* for Children 4-5 Years Old, 1999



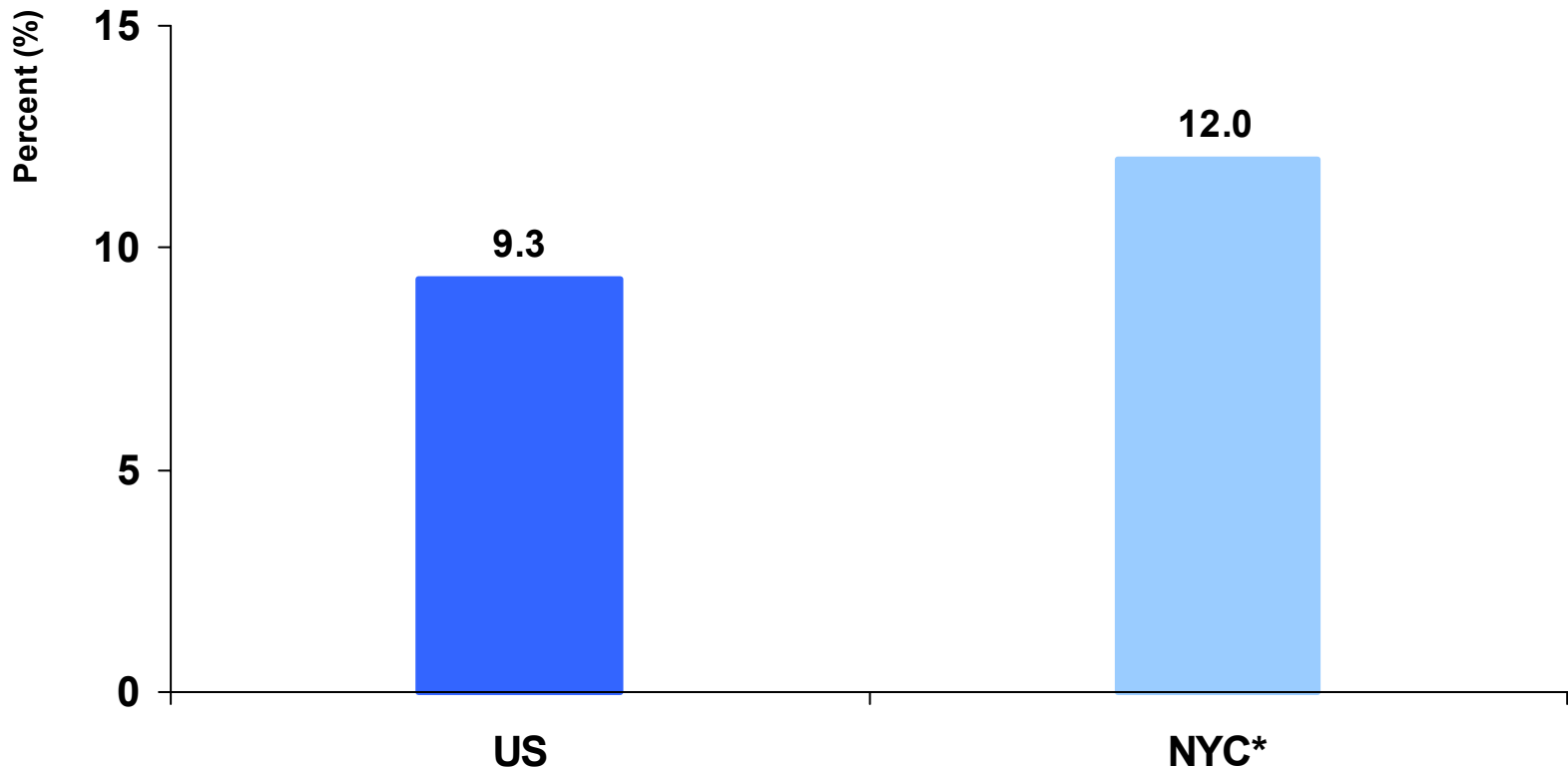
*Excludes children missing information on borough of residence.

UHF Chart

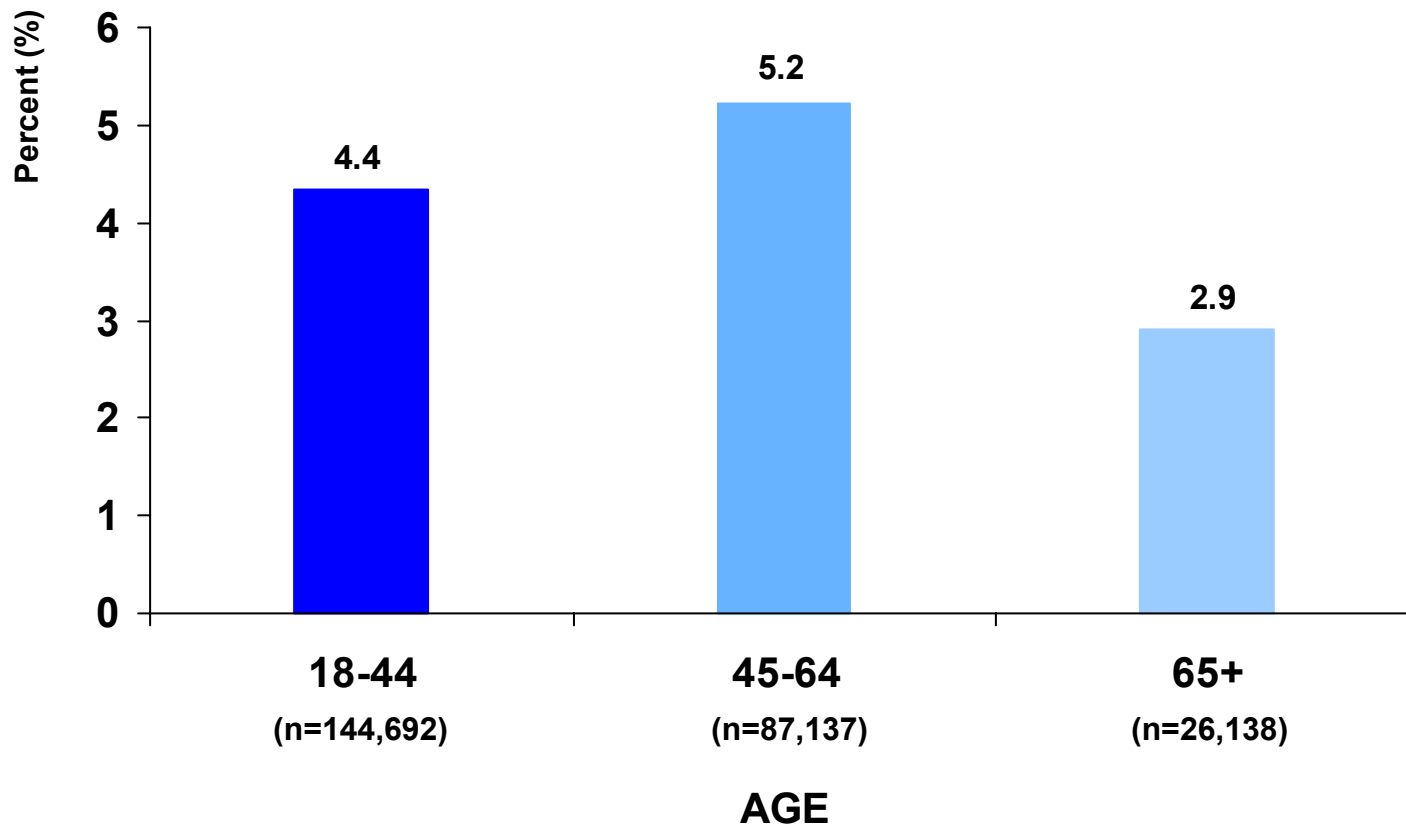
CHAPTER 4

ADULT PREVALENCE

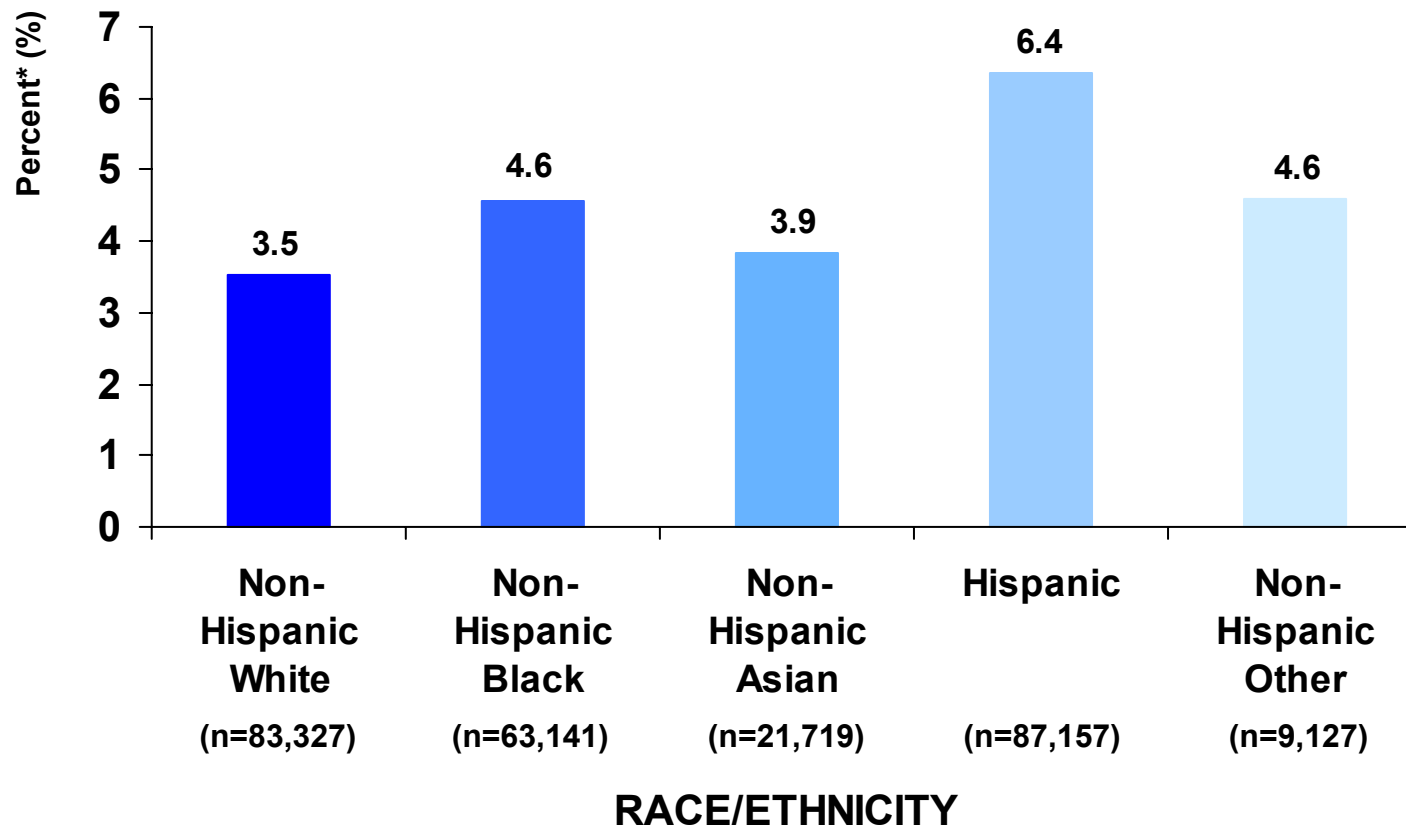
Comparison of Self-Reported Lifetime Prevalence of Asthma among Adults aged 18 years and older in the U.S. (2000) and NYC (2002)



Current Self-Reported Asthma Prevalence by Age, Adults aged 18 years and older, New York City, 2002



Current Self-Reported Asthma Prevalence by Race/Ethnicity, Adults Aged 18 and older, New York City, 2002



Current Self-Reported Asthma Prevalence by Borough, Adults Aged 18 and older, New York City, 2002

