

2000-2008 ASTHMA HOSPITALIZATION TABLES AND FIGURES

TABLE of CONTENTS

Tables

Table 1	2
2001-2008 Asthma Hospitalizations, by UHF Neighborhood, New York City, Ages 0-14 Years	
Table 2	3
2001-2008 Asthma Hospitalizations, by UHF Neighborhood, New York City, Ages 15-34 Years	
Table 3	4
2001-2008 Asthma Hospitalizations, by UHF Neighborhood, New York City, Ages 35+ Years	

Figures

Figure 1	5
2000-2008 Asthma Hospitalizations, by Household Income, New York City, Ages 0-14 Years	
Figure 2	6
2000-2008 Asthma Hospitalizations, by Household Income, New York City, Ages 15-34 Years	
Figure 3	7
2000-2008 Asthma Hospitalizations, by Household Income, New York City, Ages 35+ Years	

TABLE 1.**2001-2008 Asthma Hospitalizations (Per 1,000) by UHF Neighborhood, Ages 0-14 Years, New York City**

UHF Neighborhood	YEAR								% change 2005-2006 - 2007-2008
	2001-2002		2003-2004		2005-2006		2007-2008		
	N	Rate*	N	Rate*	N	Rate*	N	Rate*	
Kingsbridge - Riverdale	125	4.1	131	4.3	117	4.0	129	4.6	15.0
Northeast Bronx	643	8.2	666	8.5	524	6.9	580	8.0	15.9
Fordham - Bronx Park	1156	8.6	1307	9.8	1085	8.4	1105	8.9	6.0
Pelham - Throgs Neck	1332	10.2	1275	9.8	1034	8.1	962	7.9	-2.5
Crotona - Tremont	1352	11.1	1511	12.4	1199	10.2	1159	10.2	0.0
High Bridge - Morrisania	1296	11.5	1514	13.4	1283	11.7	1120	10.5	-10.3
Hunts Point - Mott Haven	893	12.1	917	12.3	771	10.8	803	11.5	6.5
Bronx	6800	10.0	7327	10.8	6017	9.1	5862	9.2	1.1
Greenpoint	156	2.7	172	2.9	169	2.7	96	1.5	-44.4
Downtown - Heights - Slope	385	5.4	395	5.6	264	3.7	259	3.7	0.0
Bedford Stuyvant - Crown Heights	1675	10.8	1877	12.5	1382	9.5	1051	7.7	-18.9
East New York	885	9.1	1004	10.5	798	8.6	647	7.3	-15.1
Sunset Park	135	2.5	133	2.4	104	1.9	121	2.2	15.8
Borough Park	169	1.1	192	1.2	160	1.0	144	0.9	-10.0
East Flatbush - Flatbush	1094	7.6	1188	8.5	906	6.7	699	5.5	-17.9
Canarsie - Flatlands	340	4.0	424	5.1	362	4.4	241	3.1	-29.5
Bensonhurst - Bay Ridge	73	1.2	84	1.3	58	0.9	75	1.1	22.2
Coney Island - Sheepshead Bay	208	2.0	247	2.4	174	1.6	198	1.8	12.5
Williamsburg - Bushwick	1203	11.2	1298	12.3	1088	10.5	867	8.6	-18.1
Brooklyn	6310	5.8	6989	6.5	5464	5.0	4397	4.1	-18.0
Washington Heights - Inwood	559	4.7	512	4.4	375	3.5	279	2.8	-20.0
Central Harlem - Morningside Heights	836	12.8	866	13.6	682	11.3	547	9.7	-14.2
East Harlem	775	15.4	711	14.3	556	11.8	494	11.2	-5.1
Upper West Side	191	3.5	198	3.4	183	2.9	140	2.1	-27.6
Upper East Side	105	2.0	106	1.9	106	1.7	82	1.2	-29.4
Chelsea - Clinton	107	5.7	110	5.5	87	4.1	81	3.6	-12.2
Gramercy Park - Murray Hill	56	3.3	44	2.4	49	2.5	40	1.9	-24.0
Greenwich Village - SoHo	19	1.2	26	1.5	18	1.0	16	0.8	-20.0
Union Square - Lower East Side	263	5.0	249	4.5	210	3.8	182	3.2	-15.8
Lower Manhattan	25	3.3	26	3.1	22	2.5	30	3.1	24.0
Manhattan	2942	6.4	2852	6.1	2296	4.9	1896	4.0	-18.4
Long Island City- Astoria	260	3.6	251	3.5	214	3.0	192	2.7	-10.0
West Queens	635	3.6	694	3.9	544	3.0	508	2.9	-3.3
Flushing - Clearview	235	2.8	277	3.3	248	2.8	185	2.2	-21.4
Bayside - Little Neck	36	1.3	54	1.9	56	1.9	65	2.3	21.1
Ridgewood - Forest Hills	275	3.5	328	4.1	332	4.1	326	4.2	2.4
Fresh Meadows	120	3.4	107	3.1	103	2.9	96	2.8	-3.4
Southwest Queens	591	5.2	559	4.9	428	3.8	452	4.1	7.9
Jamaica	865	7.1	921	7.8	585	5.1	679	6.2	21.6
Southeast Queens	358	4.4	376	4.7	353	4.5	307	4.2	-6.7
Rockaway	440	8.8	442	9.0	421	8.6	363	7.7	-10.5
Queens	3855	4.6	4054	4.8	3302	3.9	3190	3.9	0.0
Port Richmond	131	4.0	153	4.7	153	4.6	116	3.4	-26.1
Stapleton - St. George	245	5.0	215	4.4	148	3.0	133	2.7	-10.0
Willowbrook	60	1.8	58	1.8	65	2.1	50	1.6	-23.8
South Beach - Tottenville	93	1.3	114	1.6	87	1.2	67	1.0	-16.7
Staten Island	531	2.8	540	2.9	454	2.5	366	2.0	-20.0
New York City	20438	6.3	21762	6.7	17533	5.4	15711	5.0	-7.4

**Rate per 1,000

Note: Due to missing zipcode data, the number of hospitalizations by UHF do not add up to the number of hospitalizations by borough

TABLE 2.**2001-2008 Asthma Hospitalizations (Per 1,000) by UHF Neighborhood, Ages 15-34 Years, New York City**

UHF Neighborhood	YEAR								% change 2005-2006 - 2007-2008
	2001-2002		2003-2004		2005-2006		2007-2008		
	N	Rate**	N	Rate**	N	Rate**	N	Rate**	
Kingsbridge - Riverdale	64	1.4	53	1.2	51	1.2	43	1.0	-16.7
Northeast Bronx	173	1.8	168	1.8	185	1.9	174	1.8	-5.3
Fordham - Bronx Park	490	3.0	486	2.9	388	2.4	424	2.5	4.2
Pelham - Throgs Neck	347	2.1	328	2.0	303	1.8	332	1.9	5.6
Crotona - Tremont	502	3.9	436	3.4	335	2.6	337	2.5	-3.8
High Bridge - Morrisania	455	3.8	459	3.8	386	3.2	403	3.2	0.0
Hunts Point - Mott Haven	309	3.9	395	4.9	326	4.1	332	3.9	-4.9
Bronx	2345	2.9	2330	2.9	1977	2.4	2046	2.4	0.0
Greenpoint	83	1.0	49	0.6	40	0.5	49	0.6	20.0
Downtown - Heights - Slope	215	1.4	163	1.1	152	1.0	125	0.8	-20.0
Bedford Stuyvant - Crown Heights	397	2.0	431	2.3	328	1.7	383	2.0	17.6
East New York	186	1.7	222	2.1	214	2.0	201	1.9	-5.0
Sunset Park	77	0.9	66	0.8	57	0.7	56	0.7	0.0
Borough Park	68	0.4	82	0.5	55	0.3	57	0.3	0.0
East Flatbush - Flatbush	210	1.1	239	1.3	217	1.2	221	1.2	0.0
Canarsie - Flatlands	104	1.0	133	1.3	119	1.2	116	1.1	-8.3
Bensonhurst - Bay Ridge	38	0.4	41	0.4	34	0.3	43	0.4	33.3
Coney Island - Sheepshead Bay	142	1.0	142	1.0	92	0.7	77	0.5	-28.6
Williamsburg - Bushwick	472	3.8	395	3.2	310	2.6	275	2.2	-15.4
Brooklyn	1983	1.4	1947	1.4	1618	1.1	1599	1.1	0.0
Washington Heights - Inwood	228	1.3	227	1.4	151	0.9	171	1.1	22.2
Central Harlem - Morningside Heights	214	2.3	262	2.9	203	2.3	169	1.9	-17.4
East Harlem	249	3.7	252	3.9	246	3.8	223	3.5	-7.9
Upper West Side	67	0.5	68	0.5	75	0.6	55	0.4	-33.3
Upper East Side	47	0.3	32	0.3	27	0.2	34	0.3	50.0
Chelsea - Clinton	63	0.7	53	0.6	40	0.5	36	0.4	-20.0
Gramercy Park - Murray Hill	26	0.3	29	0.4	18	0.2	25	0.3	50.0
Greenwich Village - SoHo	11	0.2*	5	0.1*	13	0.2	5	0.1*	-50.0
Union Square - Lower East Side	124	0.9	145	1.1	110	0.8	89	0.7	-12.5
Lower Manhattan	10	0.4	8	0.4*	8	0.3*	12	0.5*	66.7
Manhattan	1044	1.0	1085	1.1	893	0.9	824	0.9	0.0
Long Island City- Astoria	86	0.6	79	0.5	53	0.4	41	0.3	-25.0
West Queens	170	0.5	180	0.6	161	0.5	140	0.5	0.0
Flushing - Clearview	70	0.5	65	0.5	43	0.3	45	0.4	33.3
Bayside - Little Neck	16	0.4	14	0.4	16	0.4	11	0.3*	-25.0
Ridgewood - Forest Hills	150	1.2	112	0.9	67	0.6	86	0.7	16.7
Fresh Meadows	31	0.6	40	0.9	28	0.6	38	0.8	33.3
Southwest Queens	154	1.0	145	1.0	92	0.6	95	0.6	0.0
Jamaica	213	1.3	217	1.4	160	1.0	158	1.0	0.0
Southeast Queens	112	1.1	97	1.0	68	0.7	84	0.8	14.3
Rockaway	68	1.3	74	1.4	96	1.8	81	1.5	-16.7
Queens	1095	0.8	1047	0.8	794	0.7	789	0.6	-14.3
Port Richmond	43	1.2	66	1.7	49	1.2	58	1.4	16.7
Stapleton - St. George	88	1.3	85	1.2	75	1.0	69	0.9	-10.0
Willowbrook	29	0.7	23	0.5	15	0.3	22	0.5	66.7
South Beach - Tottenville	47	0.5	58	0.6	46	0.5	42	0.4	-20.0
Staten Island	210	0.9	232	0.9	185	0.7	191	0.7	0.0
New York City	6677	1.4	6641	1.4	5467	1.2	5449	1.2	0.0

*Relative Standard Error>30% indicating low reliability

**Rate per 1,000

Note: Due to missing zipcode data, the number of hospitalizations by UHF do not add up to the number of hospitalizations by borough

TABLE 3.**2001-2008 Asthma Hospitalizations (Per 1,000) by UHF Neighborhood, Ages 35+ Years, New York City**

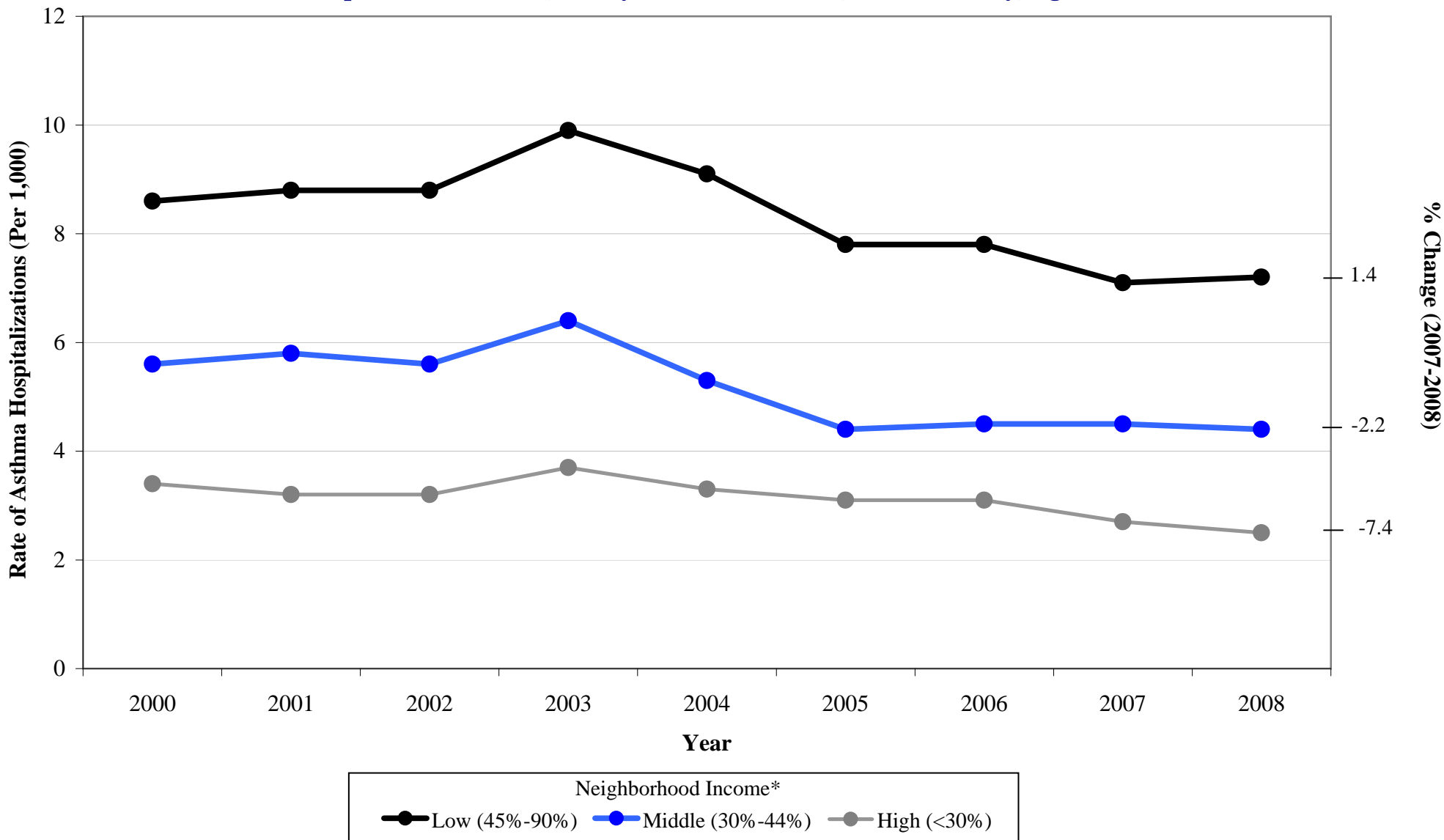
UHF Neighborhood	YEAR								% change 2005-2006 - 2007-2008
	2001-2002		2003-2004		2005-2006		2007-2008		
	N	Rate*	N	Rate*	N	Rate*	N	Rate*	
Kingsbridge - Riverdale	296	3.0	374	3.9	363	3.8	315	3.2	-15.8
Northeast Bronx	620	3.2	669	3.4	768	3.8	912	4.5	18.4
Fordham - Bronx Park	1293	6.2	1455	6.8	1553	7.2	1776	8.0	11.1
Pelham - Throgs Neck	1424	5.0	1508	5.2	1422	4.9	1667	5.6	14.3
Crotona - Tremont	1659	10.5	1870	11.5	1723	10.4	1897	11.0	5.8
High Bridge - Morrisania	1573	10.1	2035	12.6	1675	10.1	1745	10.1	0.0
Hunts Point - Mott Haven	1216	12.0	1442	13.5	1237	11.3	1330	11.6	2.7
Bronx	8089	6.7	9372	7.6	8756	7.0	9646	7.5	7.1
Greenpoint	382	3.6	348	3.2	320	2.9	329	2.8	-3.4
Downtown - Heights - Slope	900	4.4	847	4.1	839	3.9	889	4.0	2.6
Bedford Stuyvant - Crown Heights	1605	5.6	2010	6.9	1855	6.3	1991	6.7	6.3
East New York	662	4.5	895	6.0	872	5.7	889	5.6	-1.8
Sunset Park	454	4.2	365	3.3	352	3.1	383	3.2	3.2
Borough Park	550	1.8	526	1.7	488	1.5	473	1.4	-6.7
East Flatbush - Flatbush	895	2.9	927	3.0	899	2.9	880	2.8	-3.4
Canarsie - Flatlands	423	2.1	458	2.2	460	2.2	534	2.5	13.6
Bensonhurst - Bay Ridge	278	1.3	284	1.3	255	1.1	248	1.0	-9.1
Coney Island - Sheepshead Bay	760	2.3	888	2.7	825	2.4	710	2.0	-16.7
Williamsburg - Bushwick	1935	12.1	1705	10.4	1611	9.5	1458	8.2	-13.7
Brooklyn	8836	3.7	9252	3.8	8784	3.5	8764	3.4	-2.9
Washington Heights - Inwood	957	3.8	1125	4.3	946	3.6	935	3.6	0.0
Central Harlem - Morningside Heights	937	6.7	997	7.1	897	6.4	1076	7.6	18.8
East Harlem	1132	11.4	1152	11.3	1044	10.0	1133	10.8	8.0
Upper West Side	443	1.7	478	1.8	500	1.8	493	1.7	-5.6
Upper East Side	223	0.9	238	0.9	190	0.7	160	0.5	-28.6
Chelsea - Clinton	336	2.4	305	2.0	332	2.1	338	2.0	-4.8
Gramercy Park - Murray Hill	194	1.4	253	1.7	244	1.6	186	1.1	-31.3
Greenwich Village - SoHo	81	0.9	69	0.7	54	0.5	70	0.6	20.0
Union Square - Lower East Side	839	4.0	896	4.1	740	3.2	771	3.2	0.0
Lower Manhattan	66	2.1	70	2.1	68	1.9	60	1.6	-15.8
Manhattan	5227	3.2	5597	3.3	5024	2.9	5235	2.9	0.0
Long Island City- Astoria	445	2.1	466	2.1	510	2.3	474	2.0	-13.0
West Queens	784	1.7	844	1.7	779	1.5	783	1.5	0.0
Flushing - Clearview	348	1.2	361	1.2	298	0.9	360	1.1	22.2
Bayside - Little Neck	79	0.8	96	0.9	90	0.8	101	0.9	12.5
Ridgewood - Forest Hills	539	2.0	591	2.2	520	1.9	462	1.7	-10.5
Fresh Meadows	156	1.5	164	1.6	181	1.7	170	1.6	-5.9
Southwest Queens	523	2.0	638	2.4	579	2.1	541	1.9	-9.5
Jamaica	974	3.4	1135	3.8	951	3.1	1006	3.2	3.2
Southeast Queens	415	1.9	528	2.4	428	1.9	421	1.9	0.0
Rockaway	294	2.8	315	2.9	413	3.7	378	3.3	-10.8
Queens	4597	2.0	5182	2.2	4785	2.0	4761	1.9	-5.0
Port Richmond	185	3.0	150	2.4	196	3.0	243	3.5	16.7
Stapleton - St. George	313	2.5	305	2.4	288	2.2	378	2.8	27.3
Willowbrook	129	1.4	102	1.0	127	1.3	148	1.4	7.7
South Beach - Tottenville	193	1.0	198	1.0	271	1.3	265	1.2	-7.7
Staten Island	822	1.7	757	1.6	882	1.8	1035	2.0	11.1
New York City	27571	3.4	30160	3.7	28231	3.4	29441	3.4	0.0

**Rate per 1,000

Note: Due to missing zipcode data, the number of hospitalizations by UHF do not add up to the number of hospitalizations by borough

FIGURE 1.

2000-2008 Asthma Hospitalizations (Per 1,000) by Household Income, New York City, Ages 0-14 Years



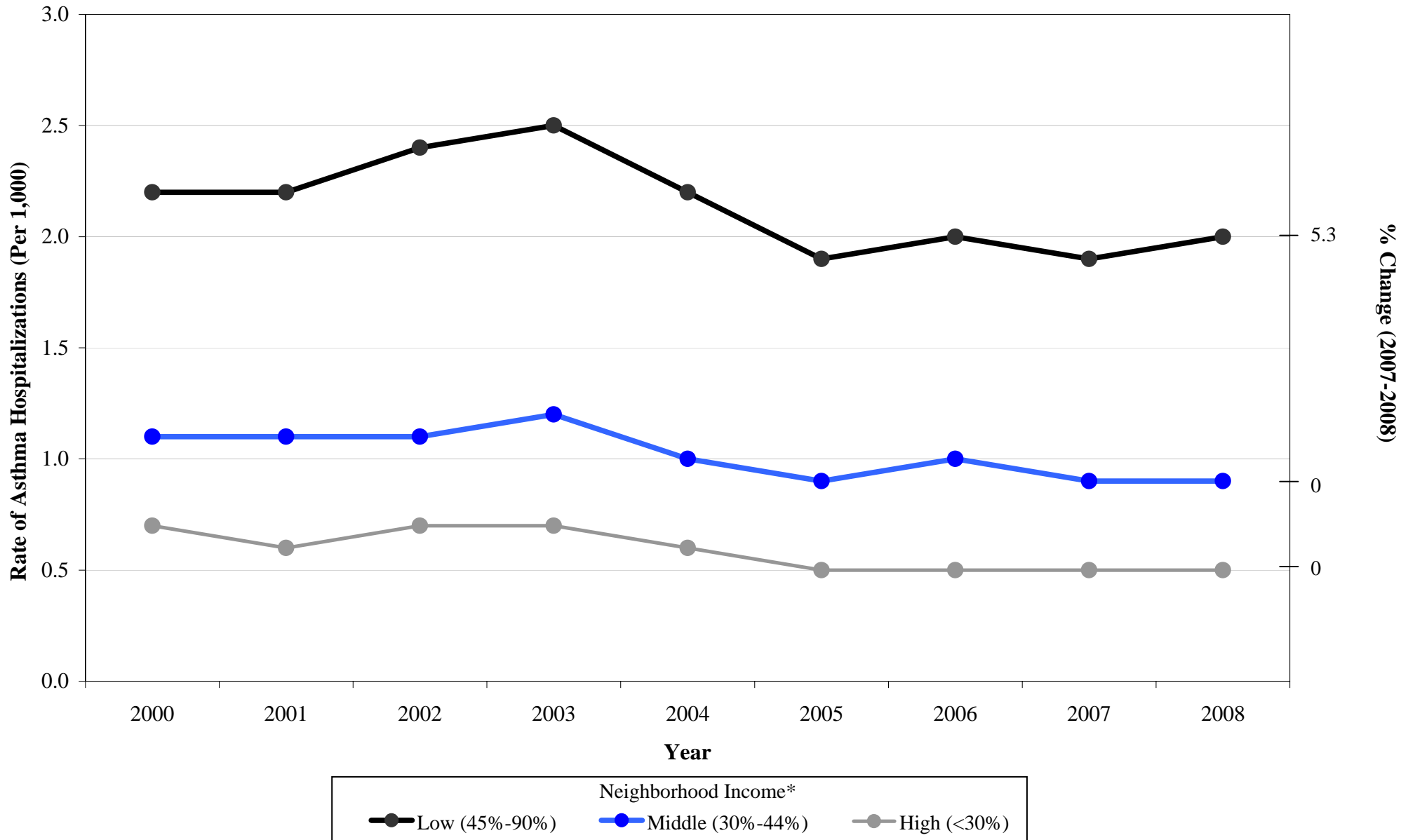
Source: New York State SPARCS data (updated 12/2009)

Prepared by NYC Bureau of Environmental Surveillance and Policy, May 2010

*Neighborhood income based on % of population living below 200% of the federal poverty level for household income.

FIGURE 2.

2000-2008 Asthma Hospitalizations (Per 1,000) by Household Income, New York City, Ages 15-34 Years



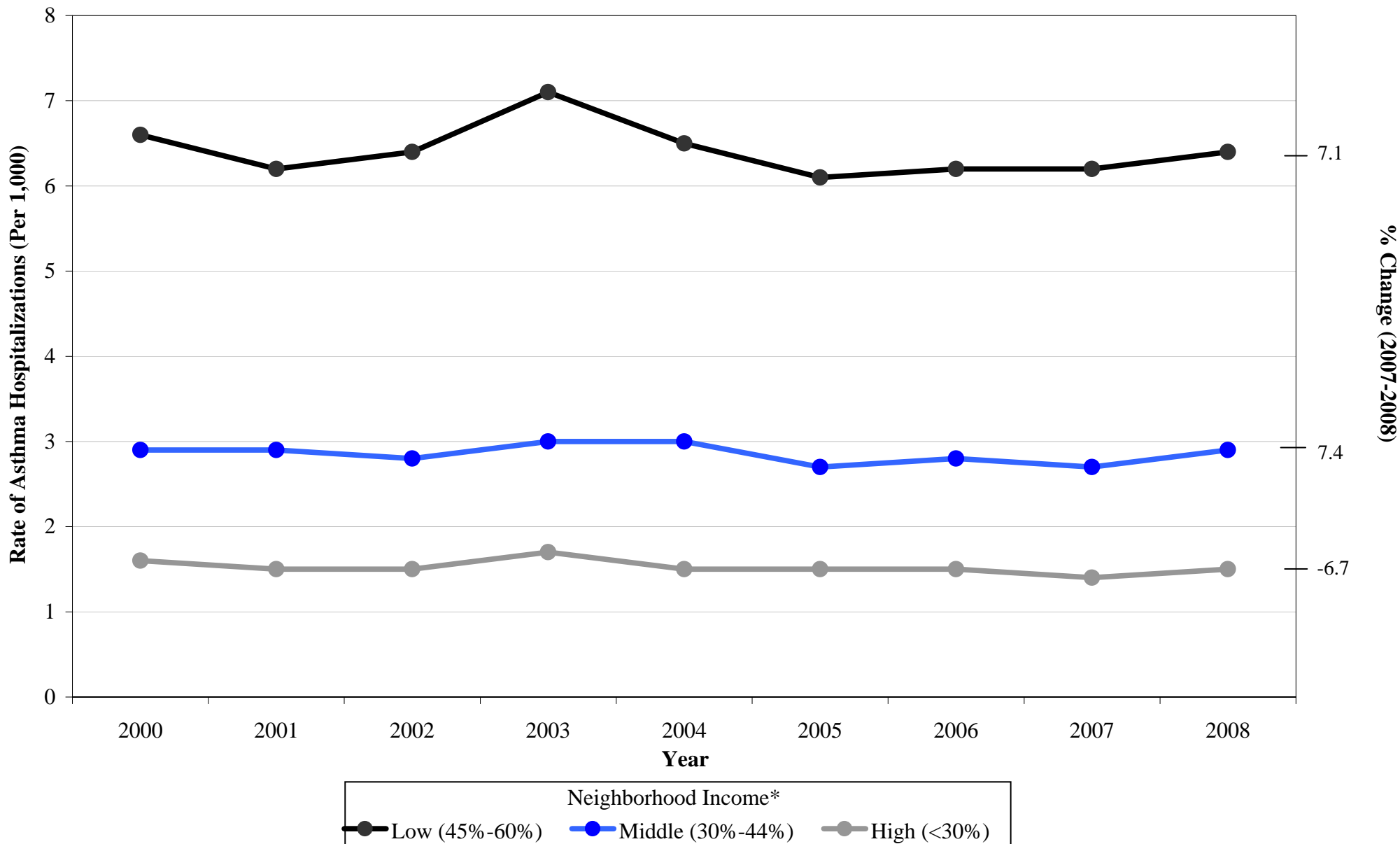
Source: New York State SPARCS data (updated 12/2009)

Prepared by NYC Bureau of Environmental Surveillance and Policy, May 2010

*Neighborhood income based on % of population living below 200% of the federal poverty level for household income.

FIGURE 3.

2000-2008 Asthma Hospitalizations (Per 1,000) by Household Income, New York City, Ages 35+ Years



Source: New York State SPARCS data (updated 12/2009)

Prepared by NYC Bureau of Environmental Surveillance and Policy, May 2010

*Neighborhood income based on % of population living below 200% of the federal poverty level for household income.