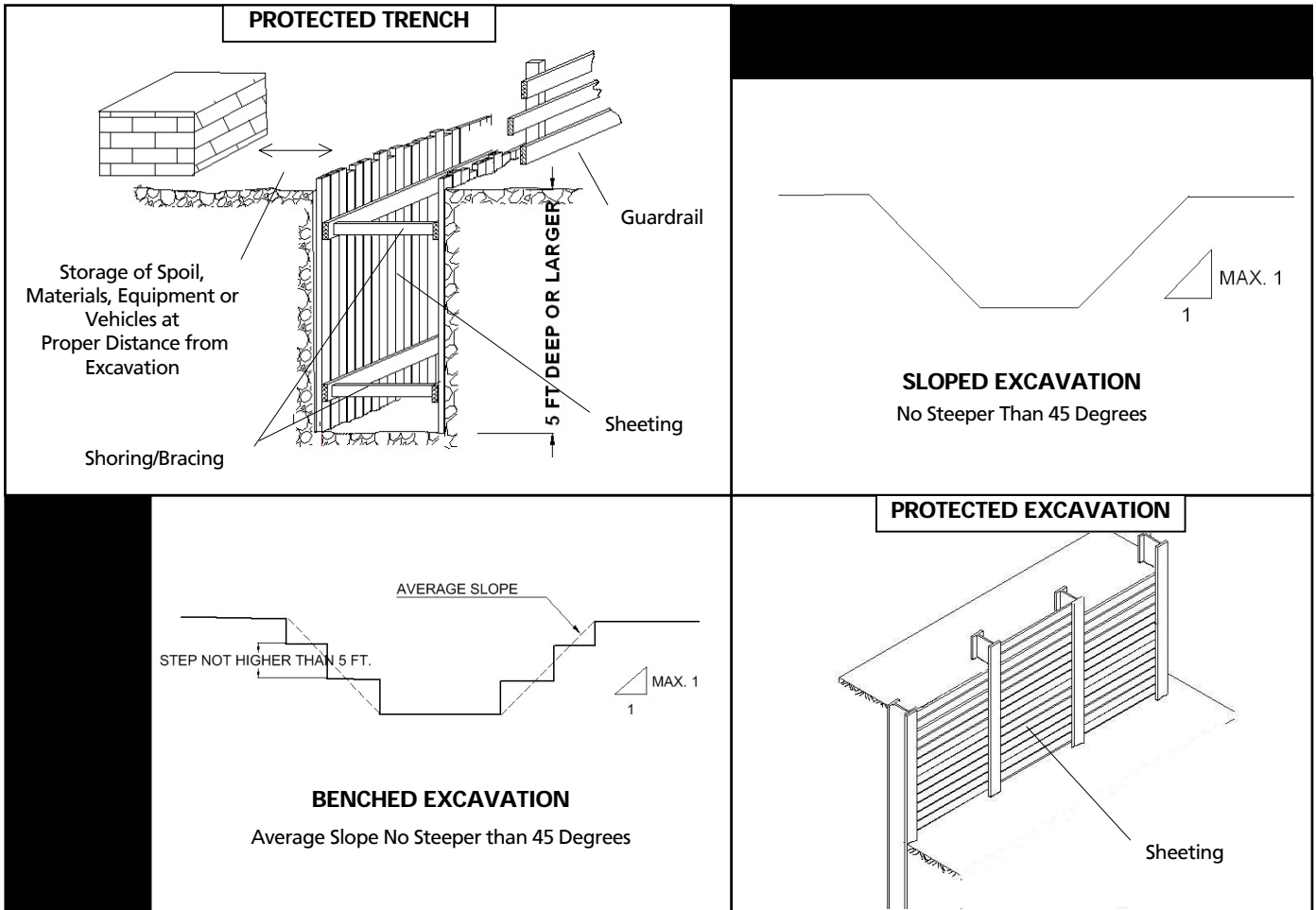


EXCAVATION AND TRENCH SAFETY GUIDELINES

January 2005

- ✓ Each side of an excavation or trench that is 5 feet or deeper must be protected by shoring/bracing and sheeting or be sloped – unless it is cut from rock.
- ✓ Each open side of an excavation or trench shall have a guardrail or a solid enclosure.
- ✓ Each excavation or trench shall have a way out, such as a ladder or ramp.
- ✓ Regularly check the walls of an excavation or trench for cracks, bulges and spalling and check the shoring for signs of distress -- especially after a rainstorm.
- ✓ Refer to §27-1032 of the NYC Building Code (www.NYC.gov/buildings) and OSHA’s regulations (www.osha.gov) for details on the proper protection of an excavation or trench.



- × Do not work in an excavation or trench filled with running or standing water.
- × Do not work in an excavation or trench that is not properly protected.
- × Do not store spoil, materials or equipment along the edge of an excavation or trench.
- × Do not drive or park vehicles along the edge of an excavation or trench.

CALL 311 TO REPORT UNSAFE CONSTRUCTION ACTIVITY