



HOPE 2011

THE NYC STREET SURVEY



The HOPE 2011 Survey

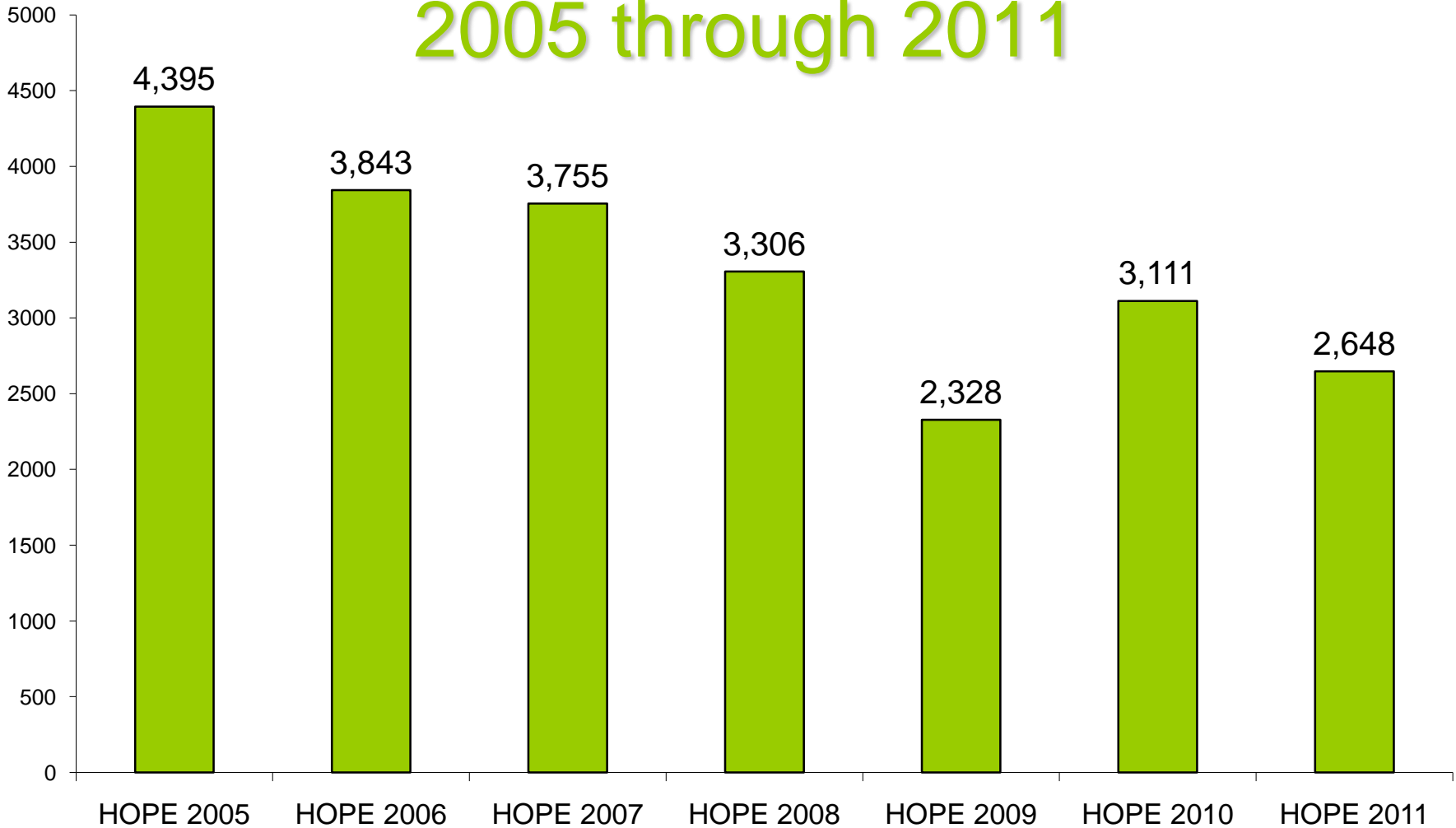
- The seventh annual HOPE Survey took place on January 31, 2011.
- 2,845 volunteers took part in the estimate, a 10 percent increase over last year's 2,590 volunteers.
- The volunteers walked approximately 15,000 miles on the night of HOPE while surveying the City.

Key Findings

- Total estimate of 2,648 unsheltered individuals in 2011.
- A 15 percent decline since 2010 in unsheltered individuals and a 40 percent decline since 2005, the first year the survey was administered Citywide.
- 1,747 fewer New Yorkers on the street since 2005.
- Decoys were used throughout the HOPE 2011 survey as a quality control measure to ensure validity.

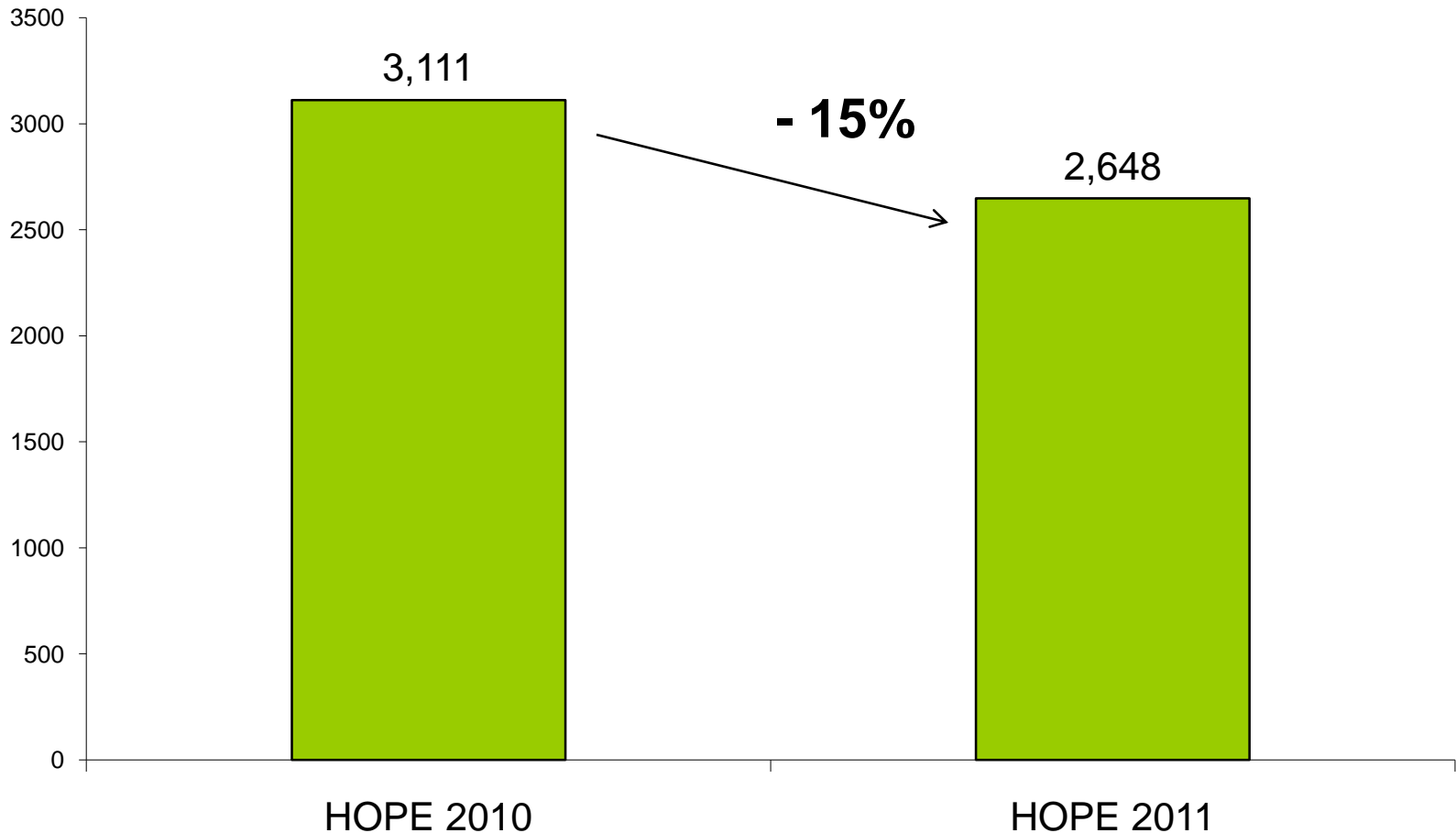


Unsheltered Population from HOPE 2005 through 2011



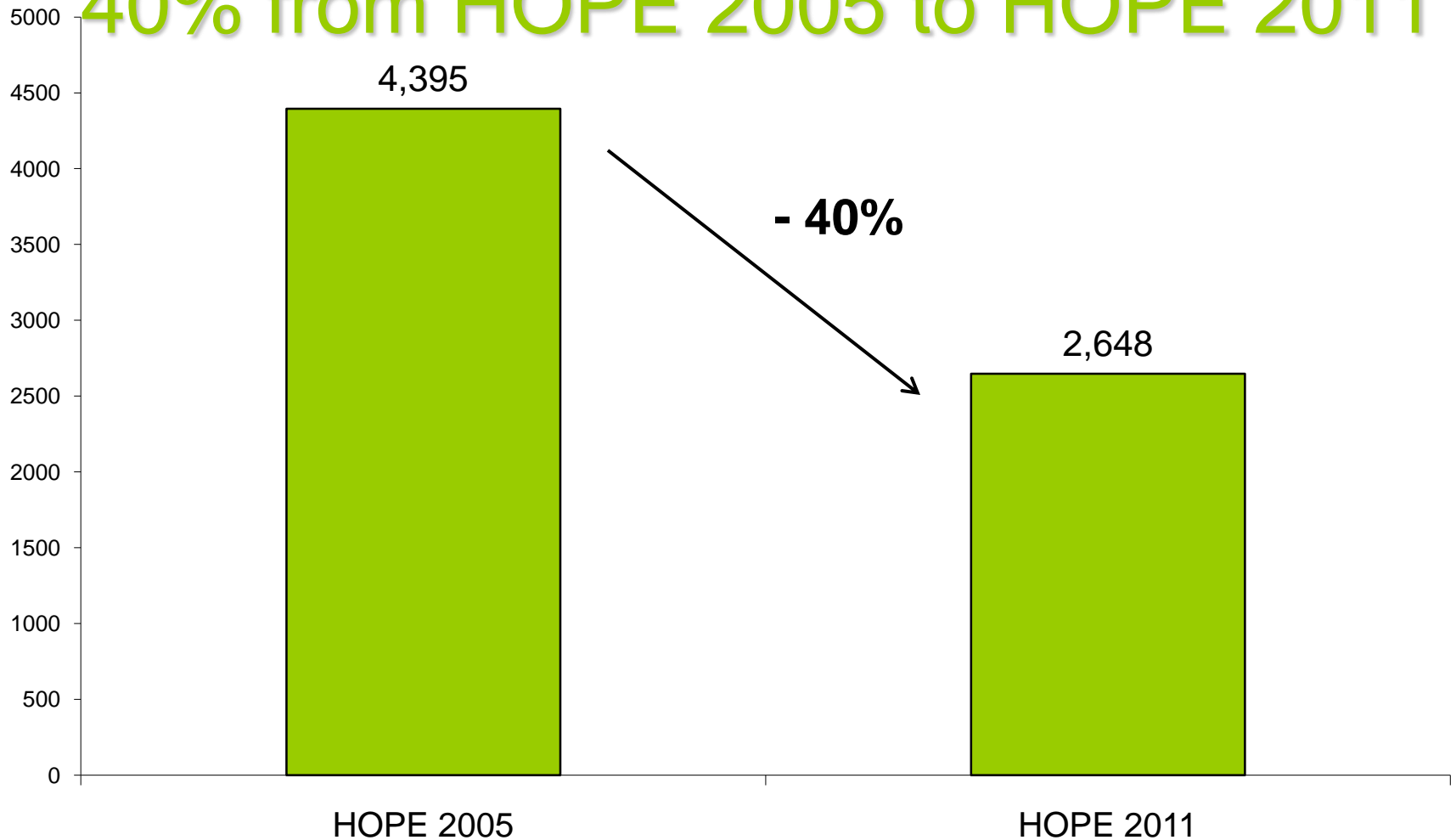


Unsheltered Population Decreased by 15% from HOPE 2010





Unsheltered Population Decreased by 40% from HOPE 2005 to HOPE 2011





2010 vs. 2011

	Estimate		
	<u>2010</u>	<u>2011</u>	<u>Change</u>
Surface Areas			
Manhattan	1,145	786	-359 (-31%)
Bronx	174	115	-59 (-34%)
Brooklyn	428	242	-186 (-43%)
Queens	112	102	-10 (-9%)
Staten Island	175	128	-47 (-27%)
Surface Total	2,034	1,373	-661 (-32%)
Subways	1,077	1,275	198 (18%)
Total Unsheltered Individuals	3,111	2,648	-463 (-15%)



2005 vs. 2011

	Estimate		
	<u>2005</u>	<u>2011</u>	<u>Change</u>
Surface Areas			
Manhattan	1,805	786	-1019 (-56%)
Bronx	587	115	-472 (-80%)
Brooklyn	592	242	-350 (-59%)
Queens	335	102	-233 (-70%)
Staten Island	231	128	-103 (-45%)
Surface Total	3,550	1,373	-2177 (-61%)
Subways	845	1275	430 (51%)
Total Unsheltered Individuals	4,395	2,648	-1747 (-40%)

Ratio of Unsheltered Street Homeless to the General Population

	Street Homeless Population	General Population	Ratio of Unsheltered Homeless to General Population
Boston, MA	182	645,169	1 in 3,545
Chicago, IL	884	2,851,268	1 in 3,225
New York City	2,648	8,175,133	1 in 3,087
Washington, DC	321	601,723	1 in 1,875
Miami, FL	487	433,136	1 in 889
Seattle, WA	1,753	616,627	1 in 352
San Francisco, CA	2,709	805,235	1 in 297
Los Angeles, CA	15,770	3,831,868	1 in 243

*This represents a list of large U.S. cities for which DHS was able to confirm a recent estimate of the unsheltered population. A 2011 result is available for Seattle, WA, Miami, FL, and Boston, MA.. 2011 results are not yet available for the other cities, and their 2009 data are displayed in this chart. General population figures are 2010 estimates in New York, San Francisco, and Chicago, and 2009 estimates elsewhere.