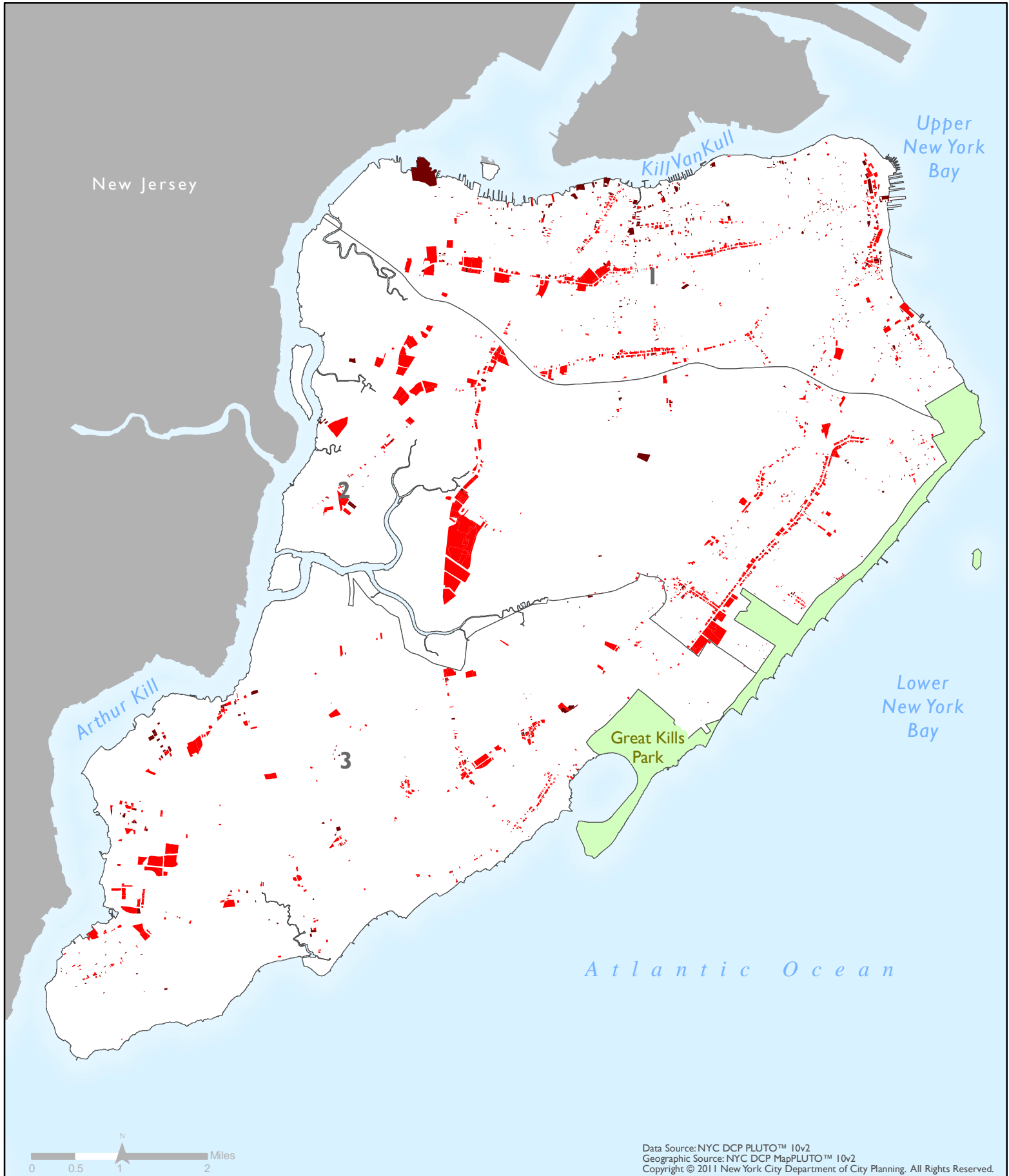


# Staten Island Land Use, 2010

## Commercial Uses and Parking (By Tax Lot)



Data Source: NYC DCP PLUTO™ 10v2  
Geographic Source: NYC DCP MapPLUTO™ 10v2  
Copyright © 2011 New York City Department of City Planning. All Rights Reserved.

	Lot Area in Acres	Percentage of Borough
<span style="display: inline-block; width: 15px; height: 15px; background-color: red; border: 1px solid black;"></span> Commercial / Office	1,078	3.5%
<span style="display: inline-block; width: 15px; height: 15px; background-color: darkred; border: 1px solid black;"></span> Parking Facilities	202	0.7%