



**phasing**

**BUS TOUR STOP 1: machines and barges**



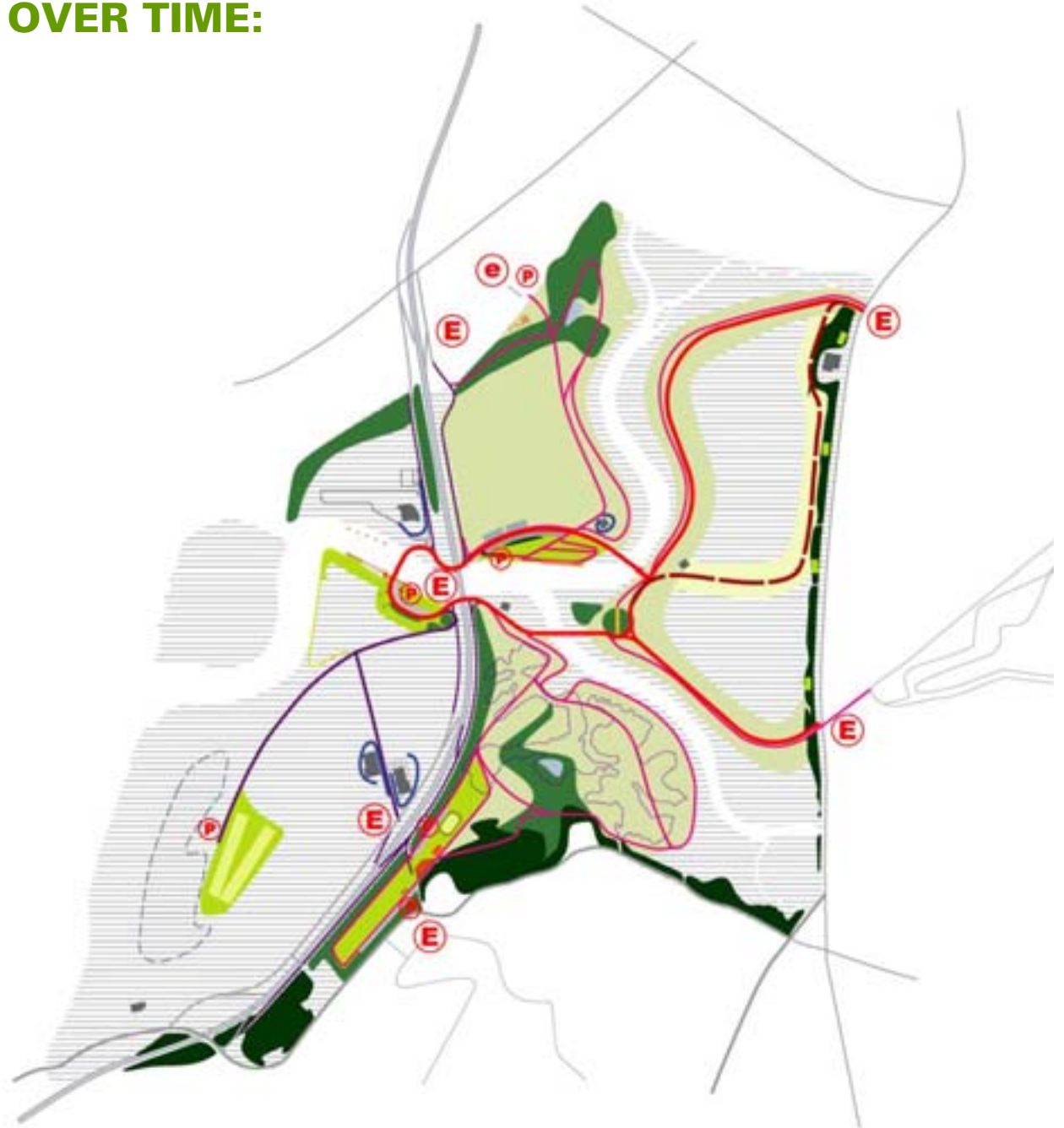
**BUS TOUR STOP 2: flare station overlook**



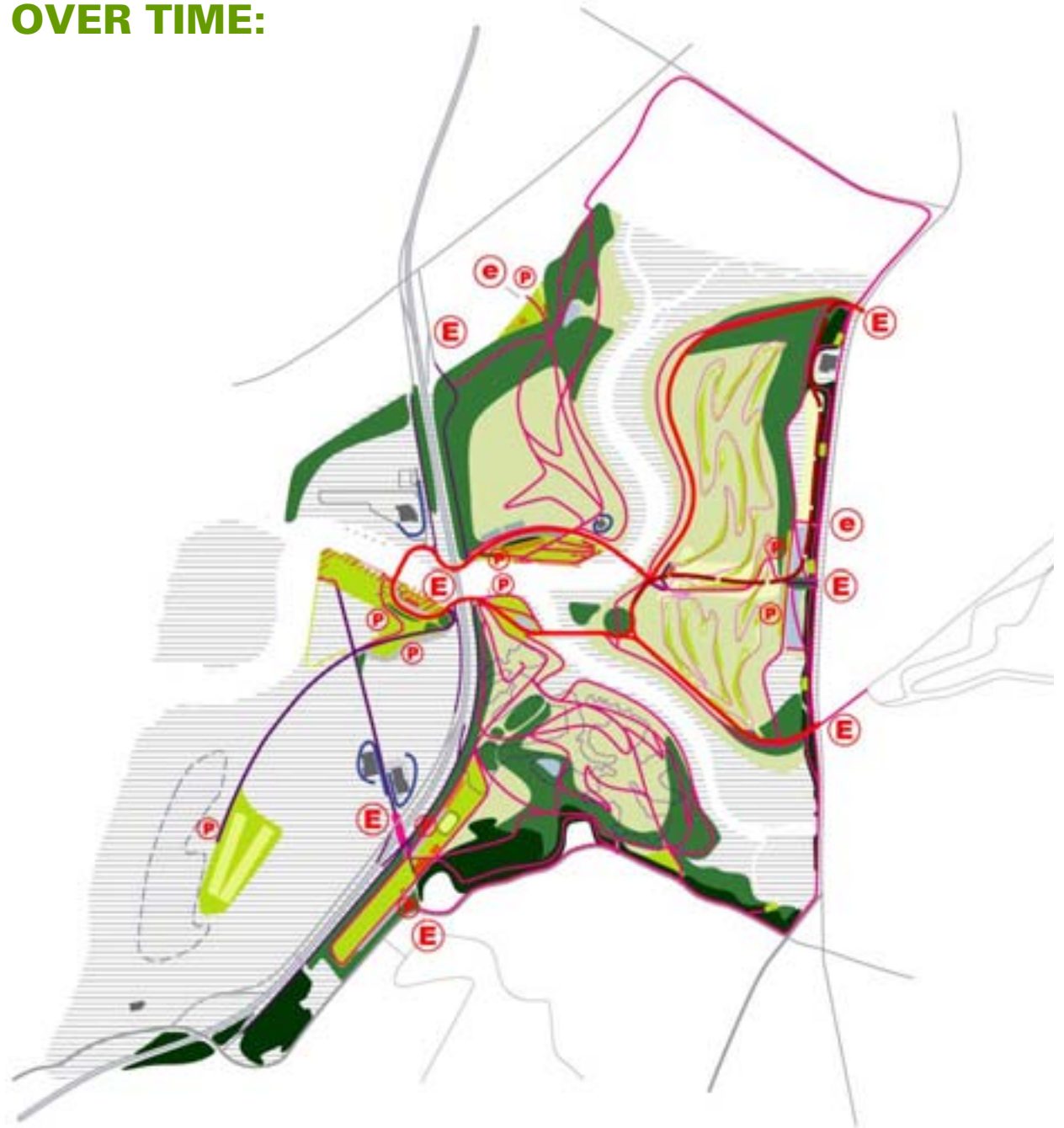
**FLARE STATION**



# GROWTH OF THE PARK OVER TIME: 10 YEARS



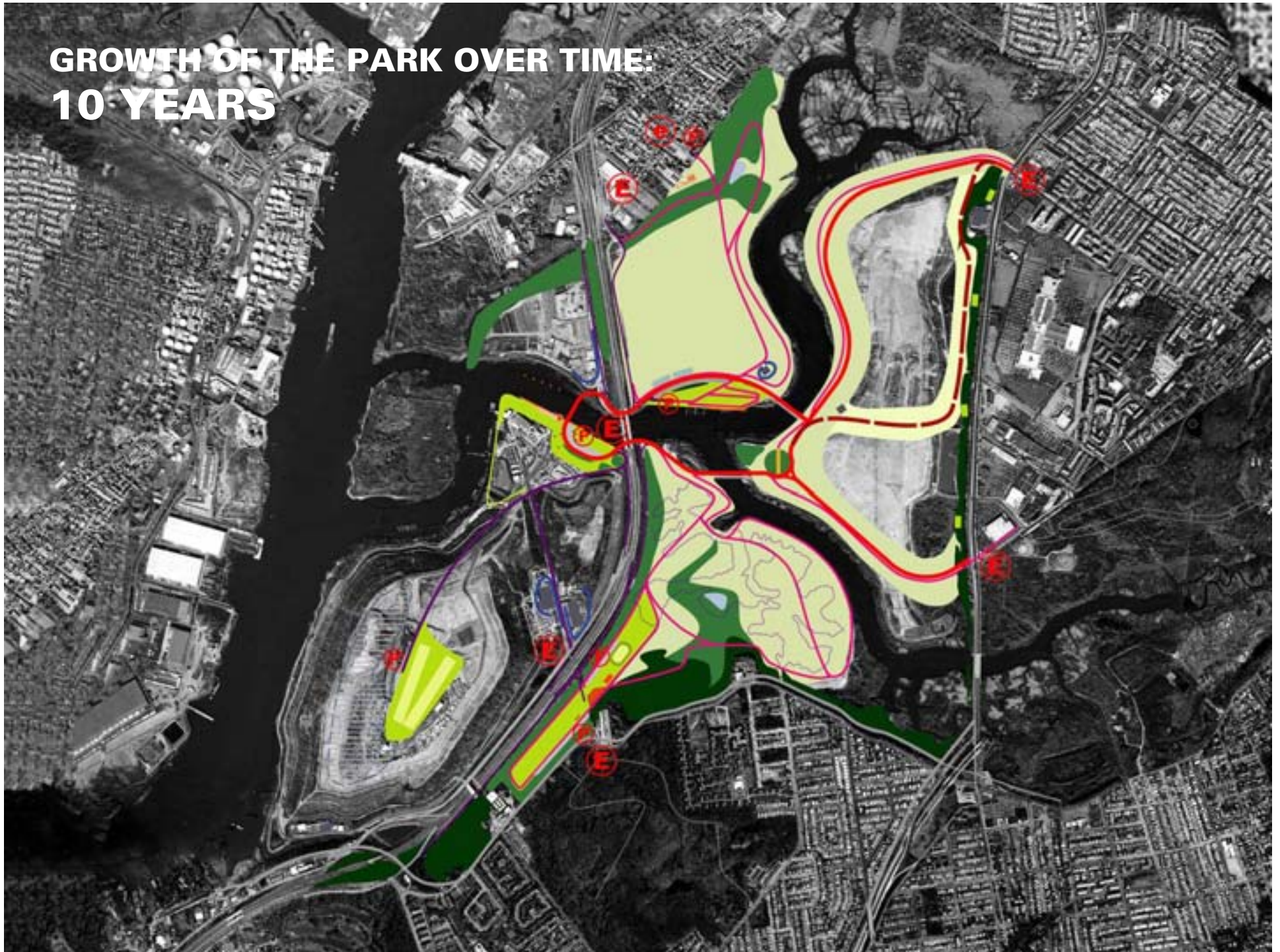
# GROWTH OF THE PARK OVER TIME: 20 YEARS



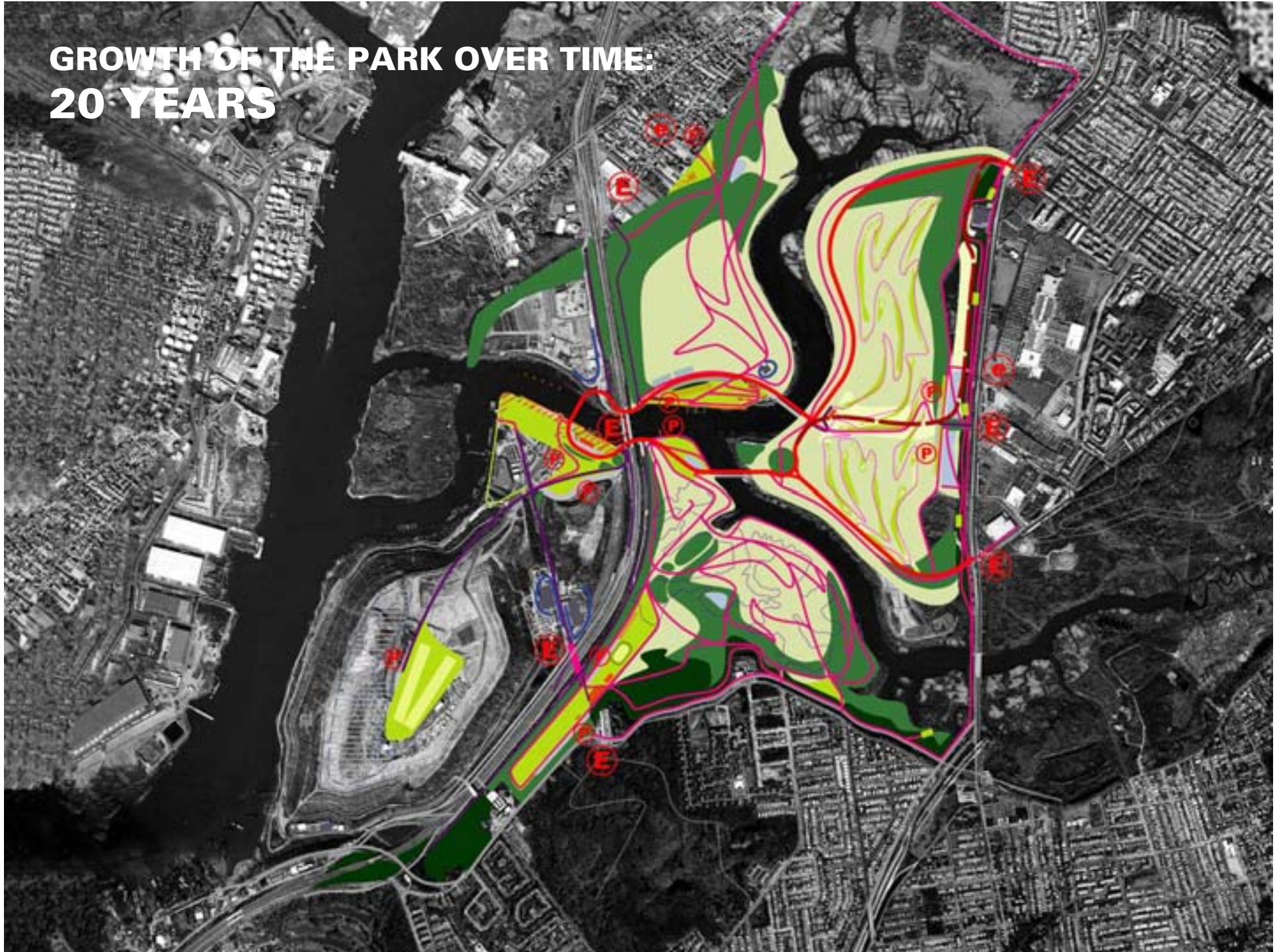
# GROWTH OF THE PARK OVER TIME: 30 YEARS



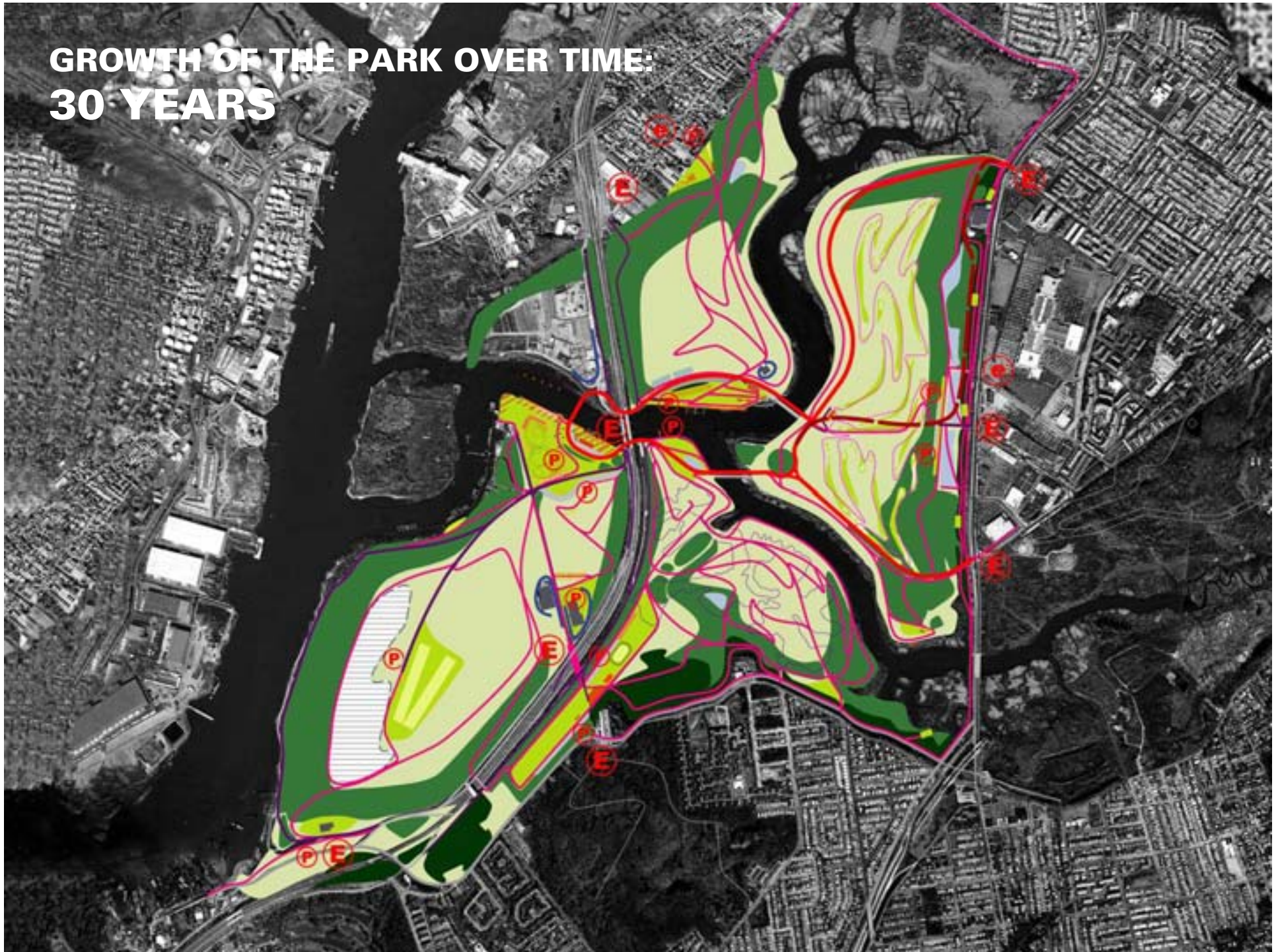
# GROWTH OF THE PARK OVER TIME: 10 YEARS



# GROWTH OF THE PARK OVER TIME: 20 YEARS



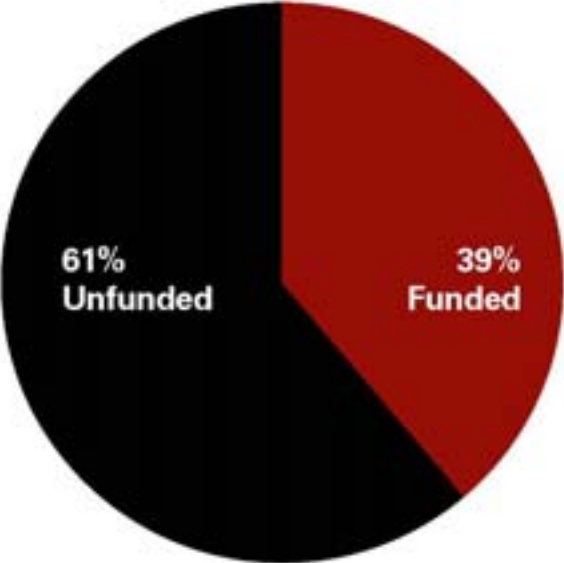
# GROWTH OF THE PARK OVER TIME: 30 YEARS





**stewardship + finance**

**THE TOTAL PUBLIC CAPITAL INVESTMENT REQUIRED TO CREATE FRESH KILLS PARKLAND IS ESTIMATED AT ROUGHLY \$650 MILLION OVER 30 YEARS.**



**DSNY CLOSURE MEASURES, WHICH ARE FINANCIALLY ASSURED, REPRESENT NEARLY 40% OF THIS TOTAL.**

**ADDITIONALLY, THE CITY HAS ALREADY COMMITTED NEARLY \$120 MILLION TOWARD PHASE 1, INCLUDING FUNDS FOR IMMEDIATE IMPROVEMENTS OVER THE NEXT 2-3 YEARS.**

**THE MASTER PLAN IS INTENDED TO PROVIDE FOR STEADY,  
INTELLIGENT GROWTH OVER A 20-30-YEAR PERIOD**



**PHASE 1  
\$150 MILLION**



**PHASE 2  
\$143 MILLION**



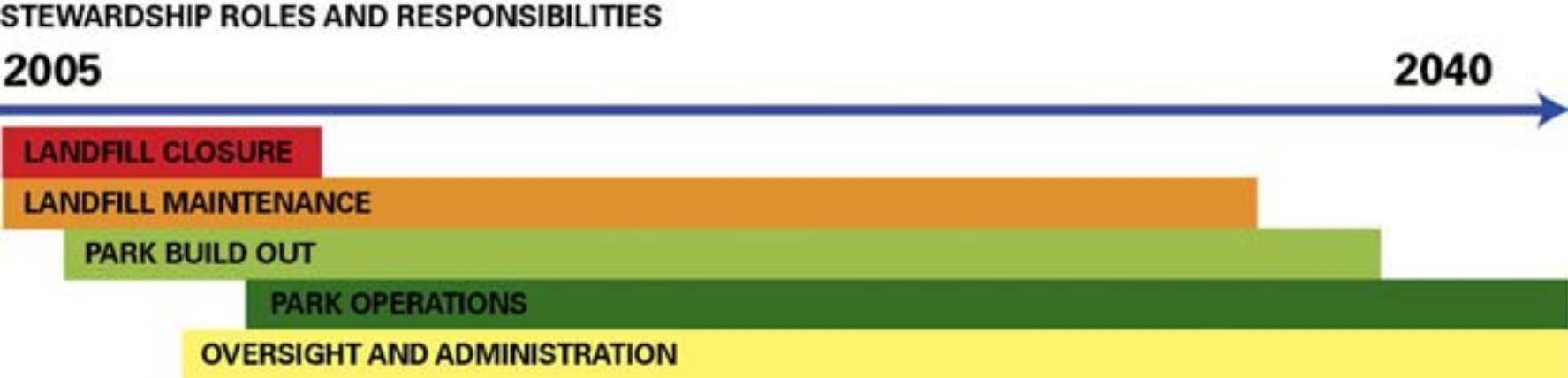
**PHASE 3  
\$88 MILLION**

**PHASE ONE INVESTMENTS ARE INTENDED TO PROVIDE A BROAD AND SIGNIFICANT RANGE OF AMENITIES, INCLUDING NEW PARK DRIVES, PARKS, SPORTS FIELDS, PATHS, WATERFRONT ESPLANADES, PICNIC AREAS, THE EARTHWORK MONUMENT AND HABITAT RESTORATION.**



**PHASE 1  
\$150 MILLION**

**THE STEWARDSHIP ENTITY FOR FRESH KILLS PARKLAND MUST HAVE THE CAPACITY TO UNDERTAKE A BROAD SCOPE OF ACTIVITY.**



**THE TEAM HAS DEVELOPED SEVERAL STEWARDSHIP OPTIONS, AND THE DEPT. OF PARKS AND RECREATION WILL BE PLAYING A LEADING ROLE IN DEVELOPING THE STEWARDSHIP ENTITY.**



**schedule**

**...the next five years**



## **2005**

- **draft master plan**
- **organized public bus-tours of site**

## **2006-07**

- **eis / final master plan**
- **sports field area and perimeter overlooks**

## **2007-08**

- **park drives and connections to x'way**
- **multi-use paths**
- **travis area of north park**
- **arden area of south park**

## **2008-10**

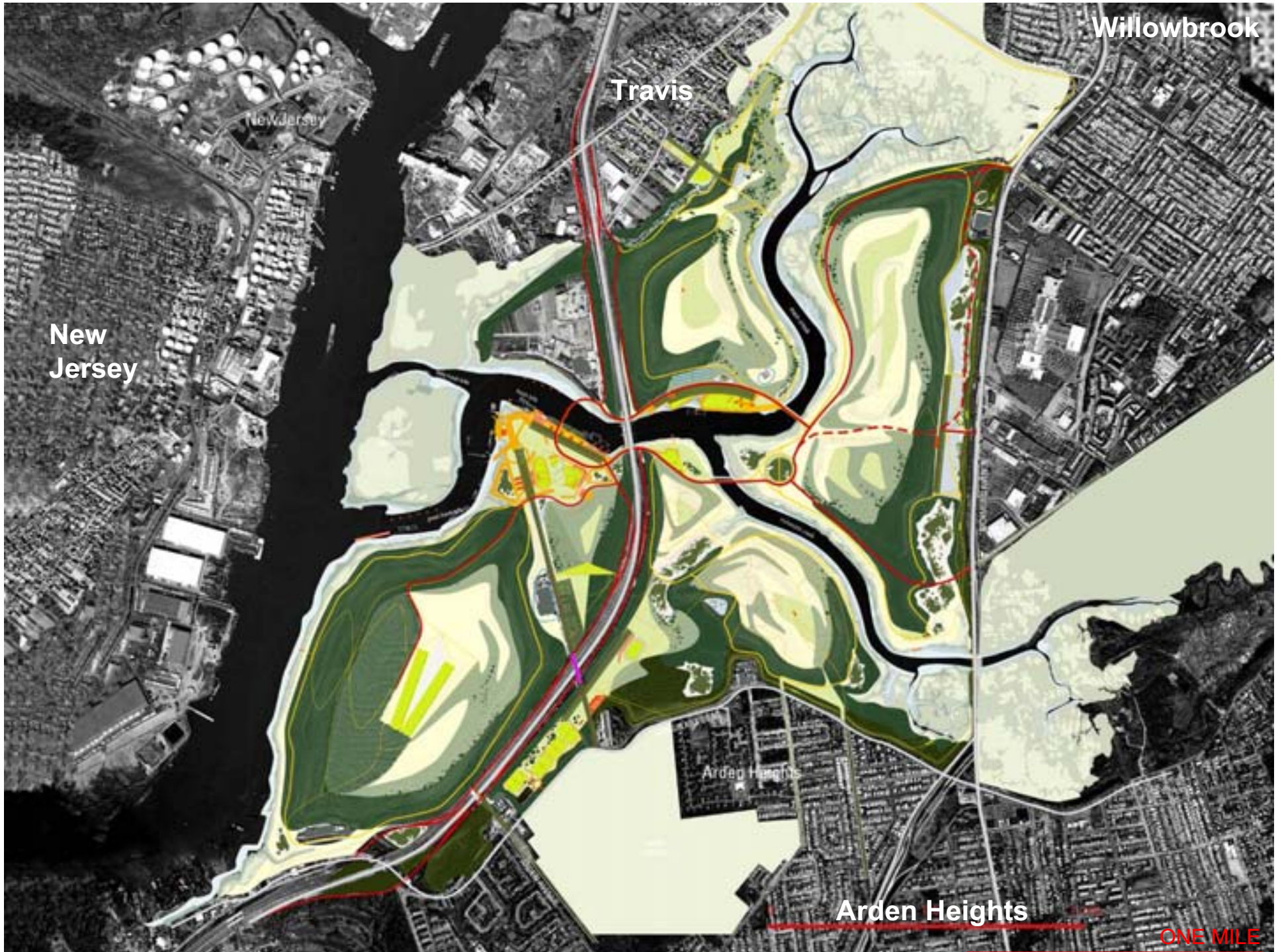
- **north park and creek landing**
- **south park**
- **the point esplanade**



**[WWW.NYC.GOV/FRESHKILLS](http://WWW.NYC.GOV/FRESHKILLS)**

**FRESH KILLS HOTLINE  
212-977-5597 ext.275**

**NY CITY REPRESENTATIVE  
311 or 212-NEW YORK**



Willowbrook

Travis

New Jersey

Arden Heights

Arden Heights

ONE MILE