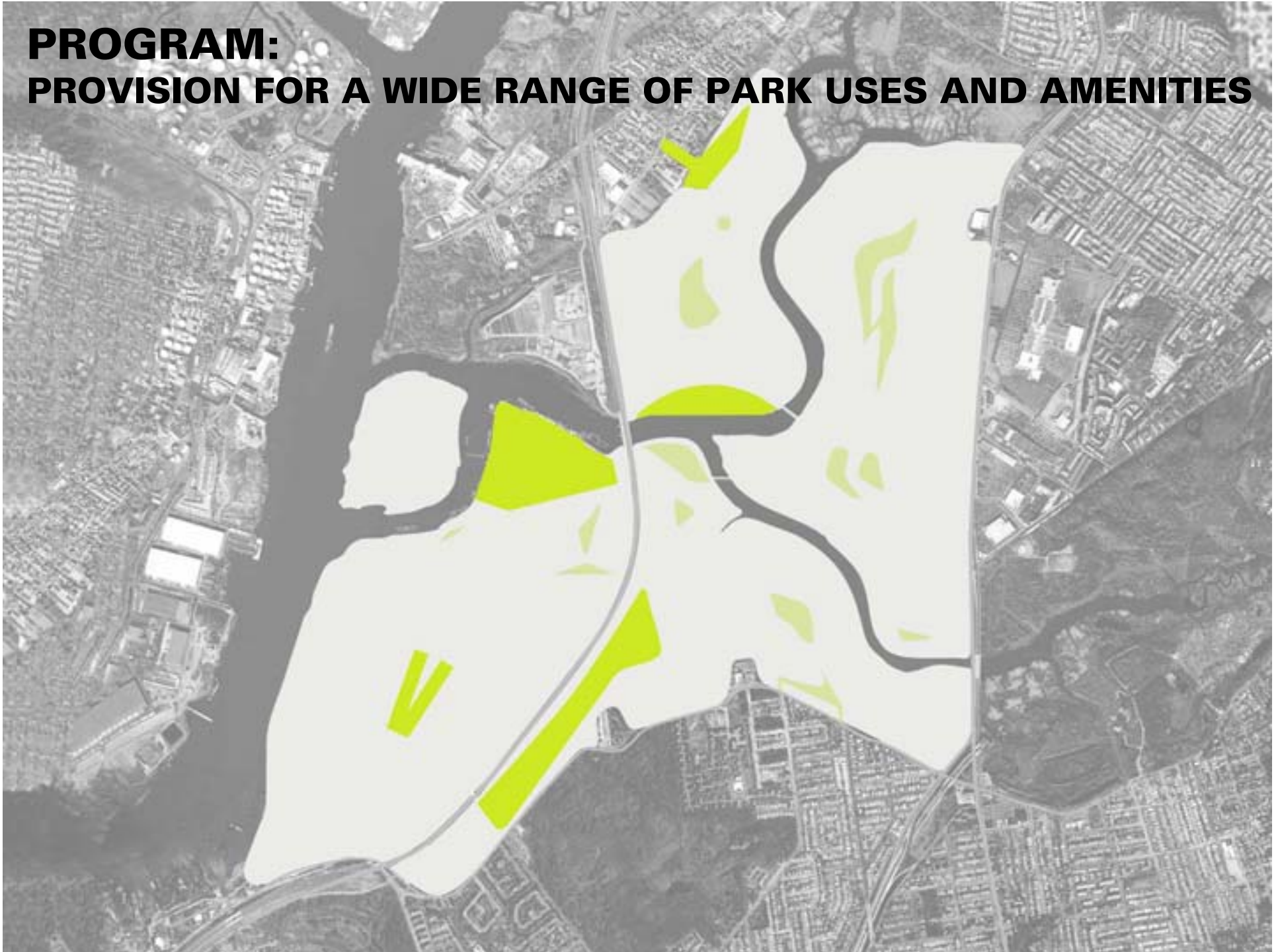




**program**

**PROGRAM:  
PROVISION FOR A WIDE RANGE OF PARK USES AND AMENITIES**



NATURE



ARTS



ATHLETICS



EXTREME SPORTS



BOATING



EDUCATION



EVENTS



CYCLING, HIKING



## FEASIBLE PROGRAMS:

baseball

basketball

biking

birding

camping

canoeing

cross country running

cross country skiing

fishing

football

golf

handball

hiking

horseback riding

kayaking

mountain biking

orienteering

rowing

skeet shooting

sledding

soccer

swimming

tennis

ultimate frisbee

9/11 monument

astronomical observatory

bird nesting sanctuary

boat launch

community centers

dog runs

ecological education

event spaces/facilities

ferry landing

gardens

green houses

habitats and reserves

indoor track + field facility

outdoor cinema

outdoor classrooms

picnic areas

playgrounds

public art + exhibitions

reforestation programs

restaurants

solar / wind energy farm

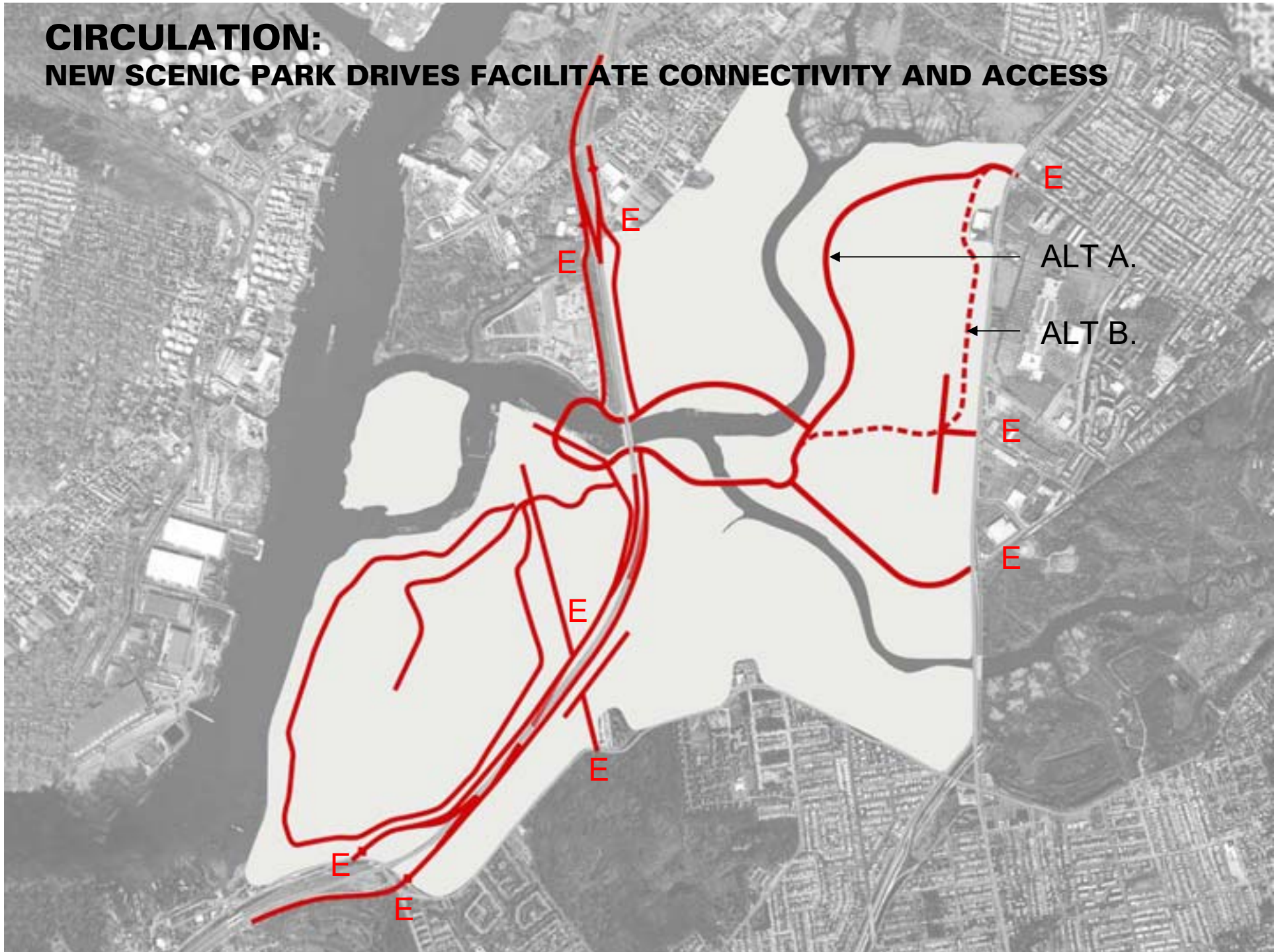
sports stadium

theatres

youth recreation clubs



**CIRCULATION:  
NEW SCENIC PARK DRIVES FACILITATE CONNECTIVITY AND ACCESS**

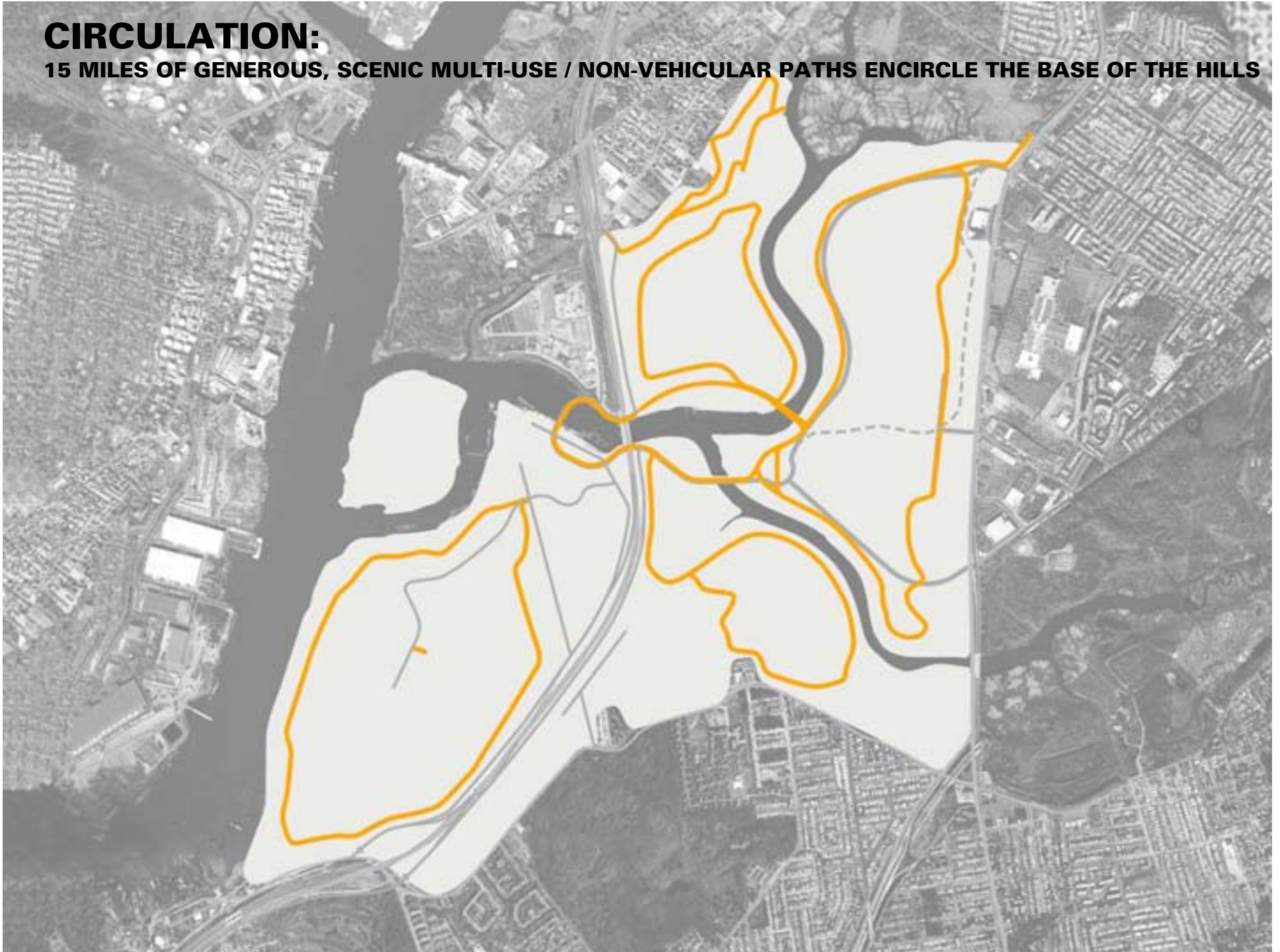


**SCENIC PARK DRIVES**



# **CIRCULATION:**

**15 MILES OF GENEROUS, SCENIC MULTI-USE / NON-VEHICULAR PATHS ENCIRCLE THE BASE OF THE HILLS**



**MULTI-USE PATHS**



# **CIRCULATION:**

**25 MILES OF NEW PATHS AND TRAILS FOR WALKING, CYCLING, HORSE-BACK RIDING AND VIEWING**



## DESIGNATED CYCLING PATHS



**PATHS AND TRAILS**

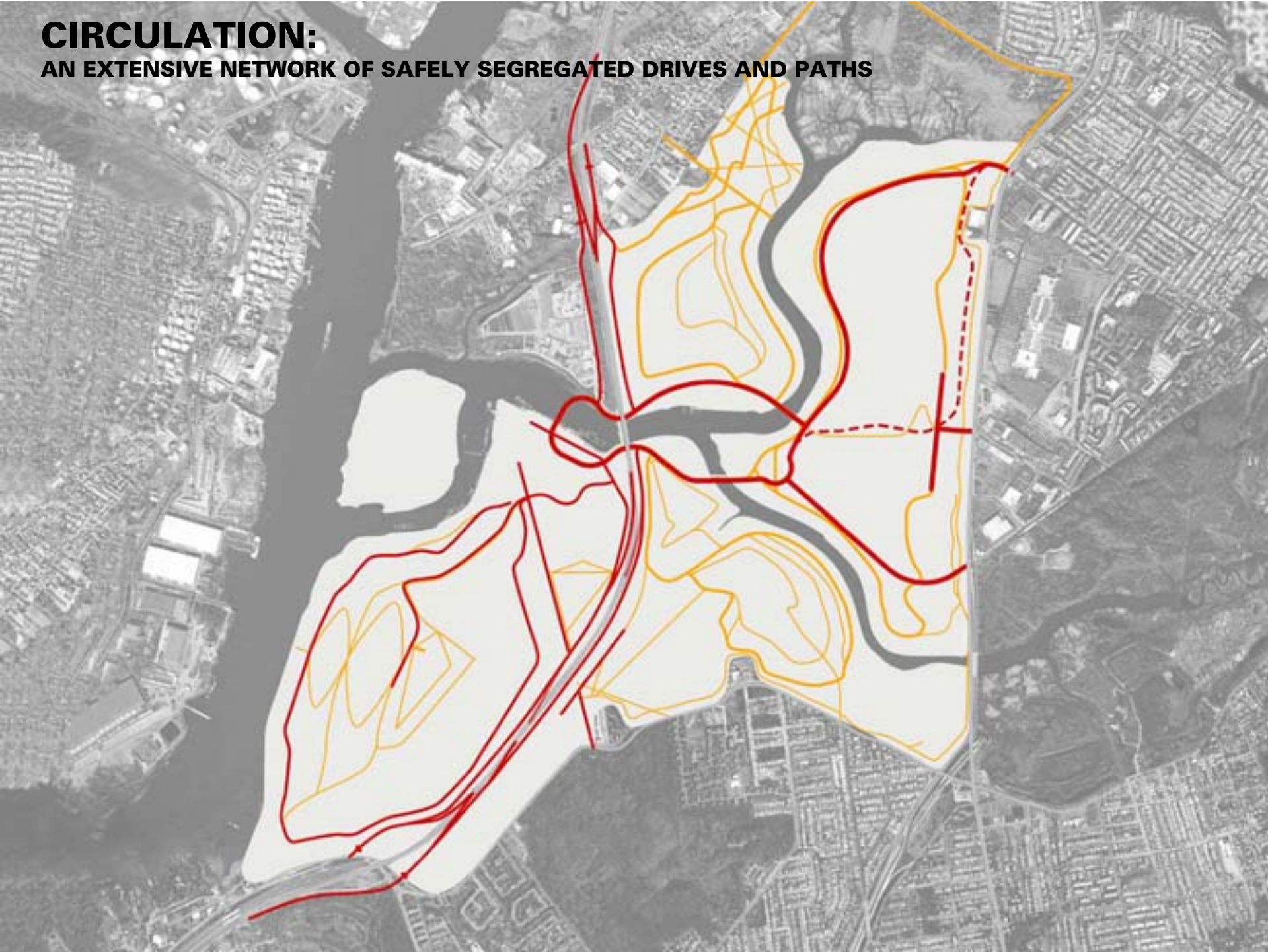


**MOUNTAIN BIKING PATHS**

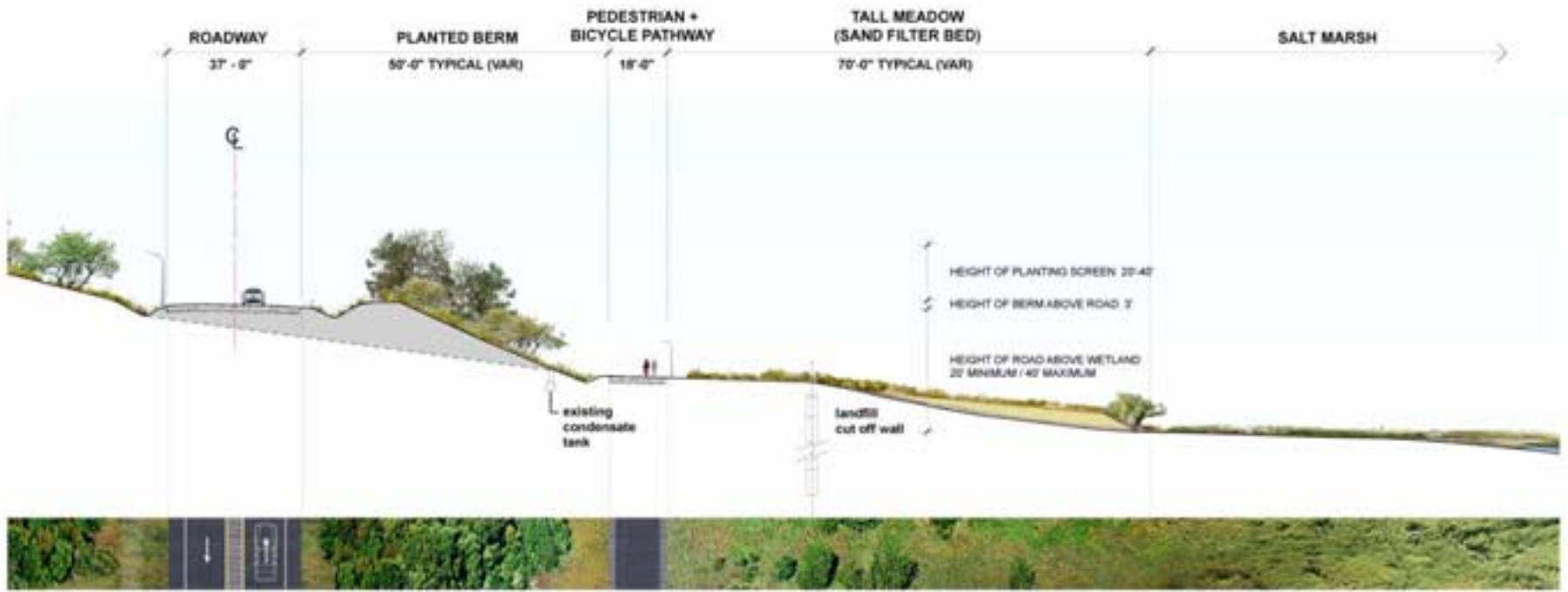
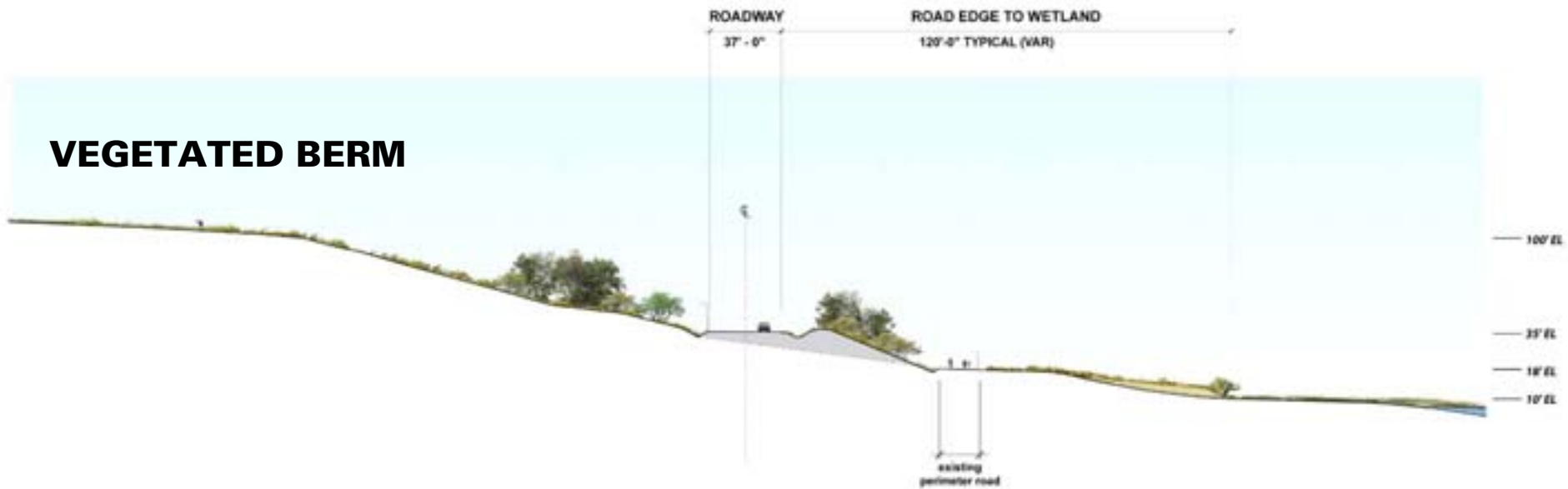


# **CIRCULATION:**

**AN EXTENSIVE NETWORK OF SAFELY SEGREGATED DRIVES AND PATHS**



# VEGETATED BERM





# **community input**

**extensive community input has been solicited over the past 18-months. the plan reflects many of the stated needs and desires of the community:**

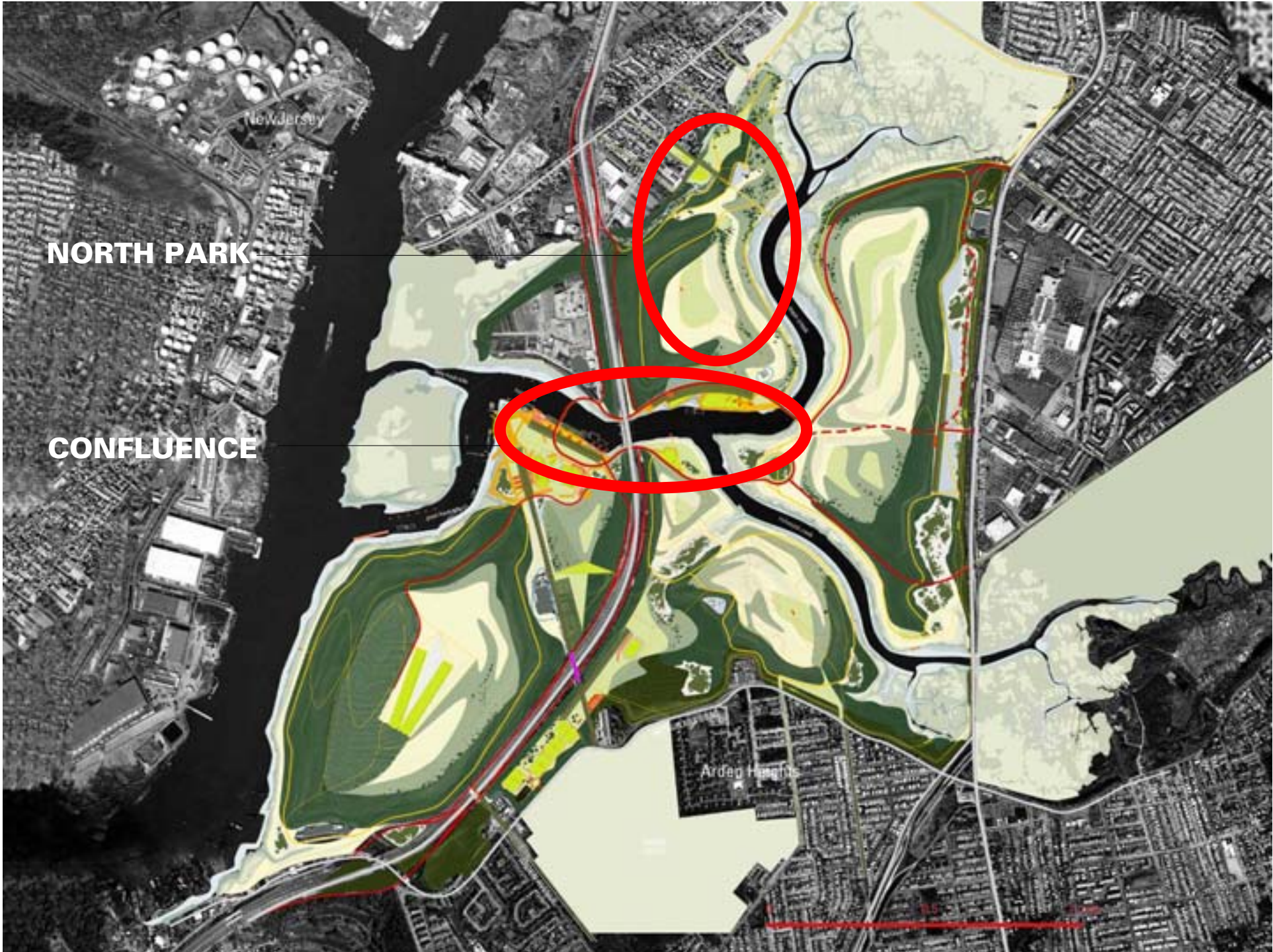
- Keep the site passive and natural**
- Retain the large scale open spaces**
- Paths and trails for long walks, cycle rides and horses**
- Access to the water is important**
- Limit commercial activities to the core of the site**
- Sports and recreation facilities desirable**
- Demonstrate renewable energy**
- Demonstrate ecological techniques of land reclamation**



**five parks in one**

**NORTH PARK**



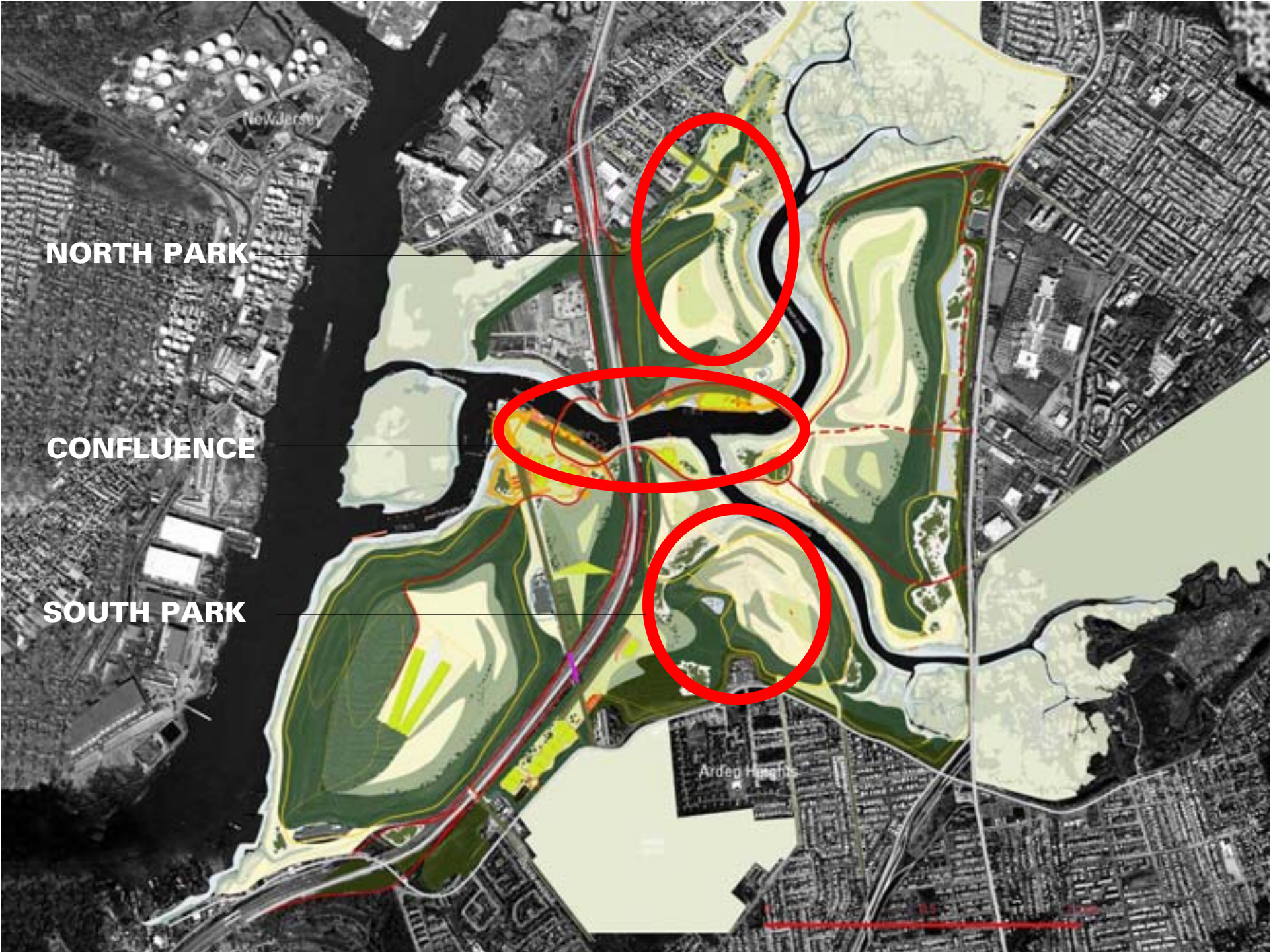


**NORTH PARK**

**CONFLUENCE**

New Jersey

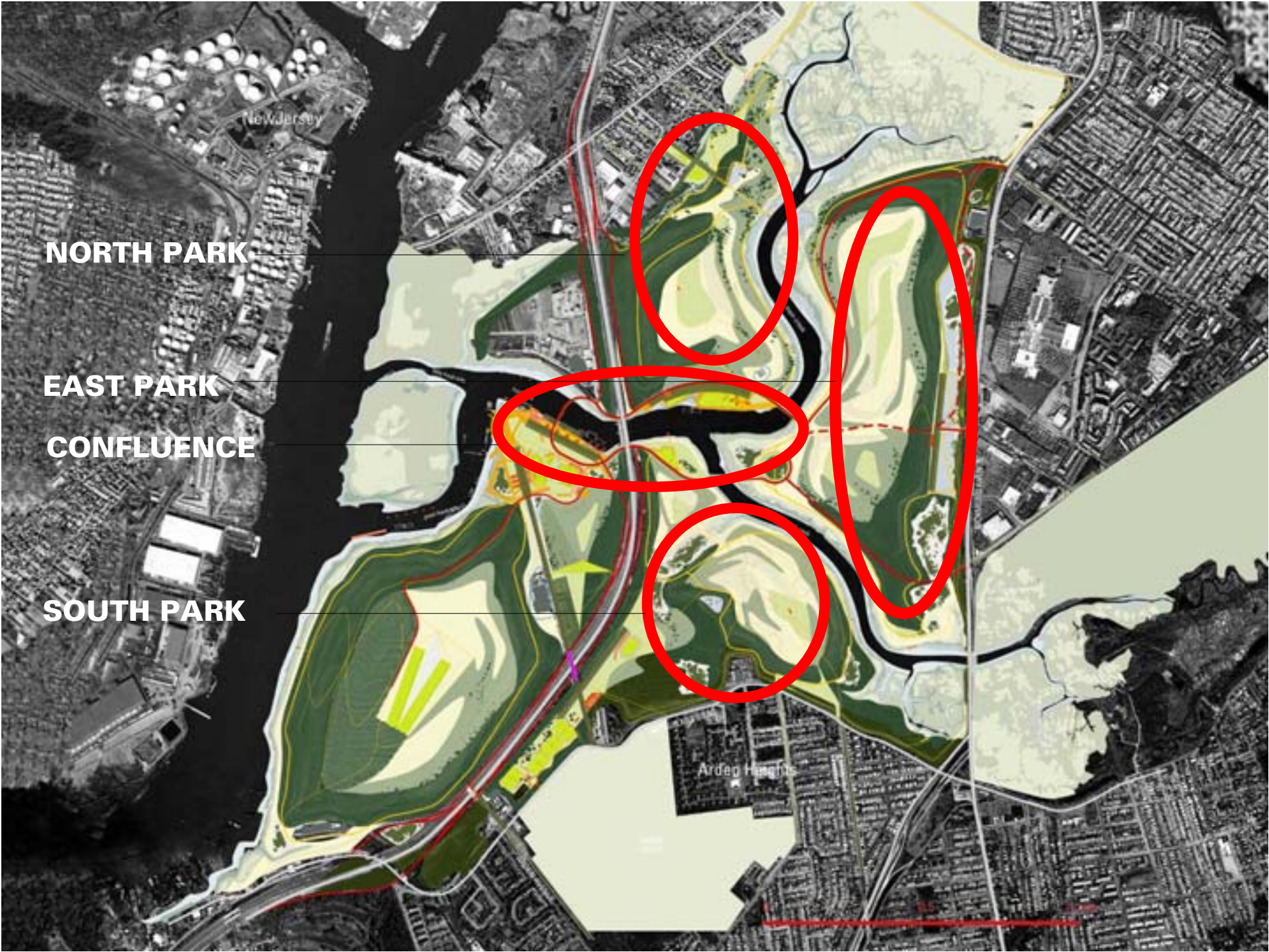
Arden Heights



**NORTH PARK**

**CONFLUENCE**

**SOUTH PARK**



**NORTH PARK**

**EAST PARK**

**CONFLUENCE**

**SOUTH PARK**



**NORTH PARK**

**EAST PARK**

**CONFLUENCE**

**SOUTH PARK**

**WEST PARK**