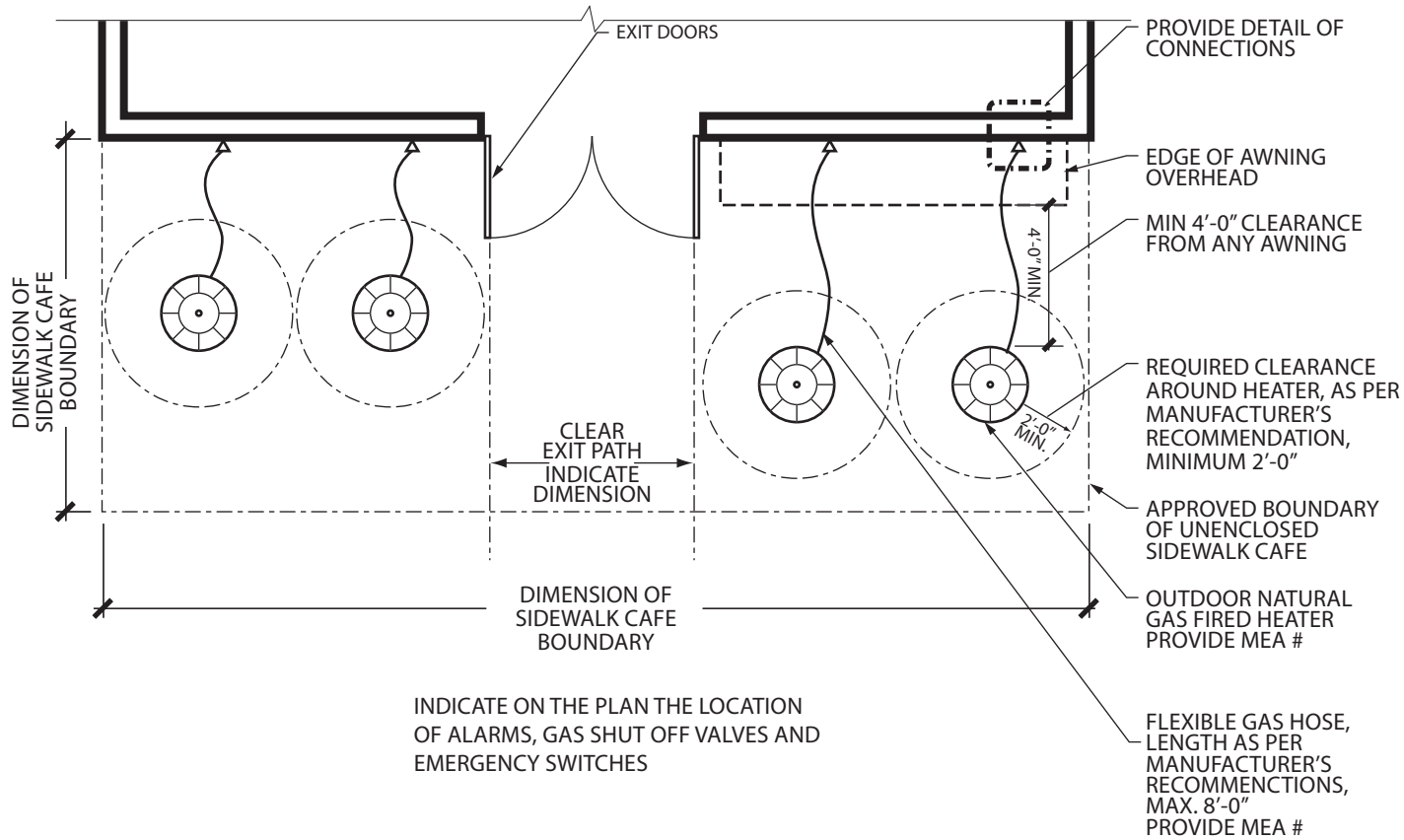


SAMPLE FLOOR PLAN FOR ILLUSTRATIVE PURPOSES ONLY. DETAILED FLOOR PLANS TO BE SUBMITTED BY LICENSED ARCHITECT OR PROFESSIONAL ENGINEER.

NOTES:

PROVIDE STANDARD BUILDING CODE NOTES INCLUDING THE GENERAL CONDITIONS OF TPPN #2/07



PROVIDE DETAILED PLUMBING PLANS INCLUDING RISERS, EQUIPMENT, VALVES AND ALARMS

1 UNENCLOSED SIDEWALK CAFE PLAN LOCATING PORTABLE GAS FIRED HEATERS

2 PLUMBING PLANS