

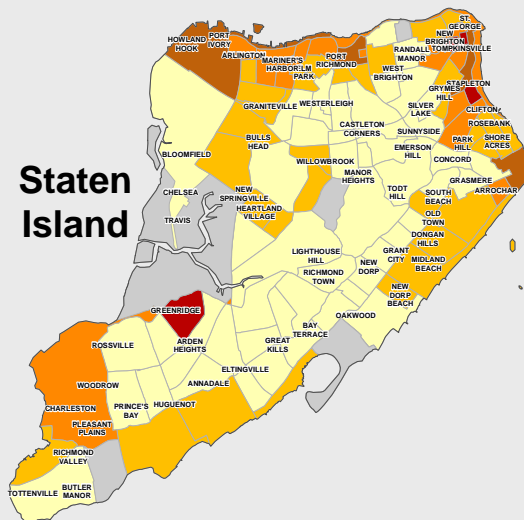
2000 Census Response Rates New York City Census Tracts*

New York City Average = 55%

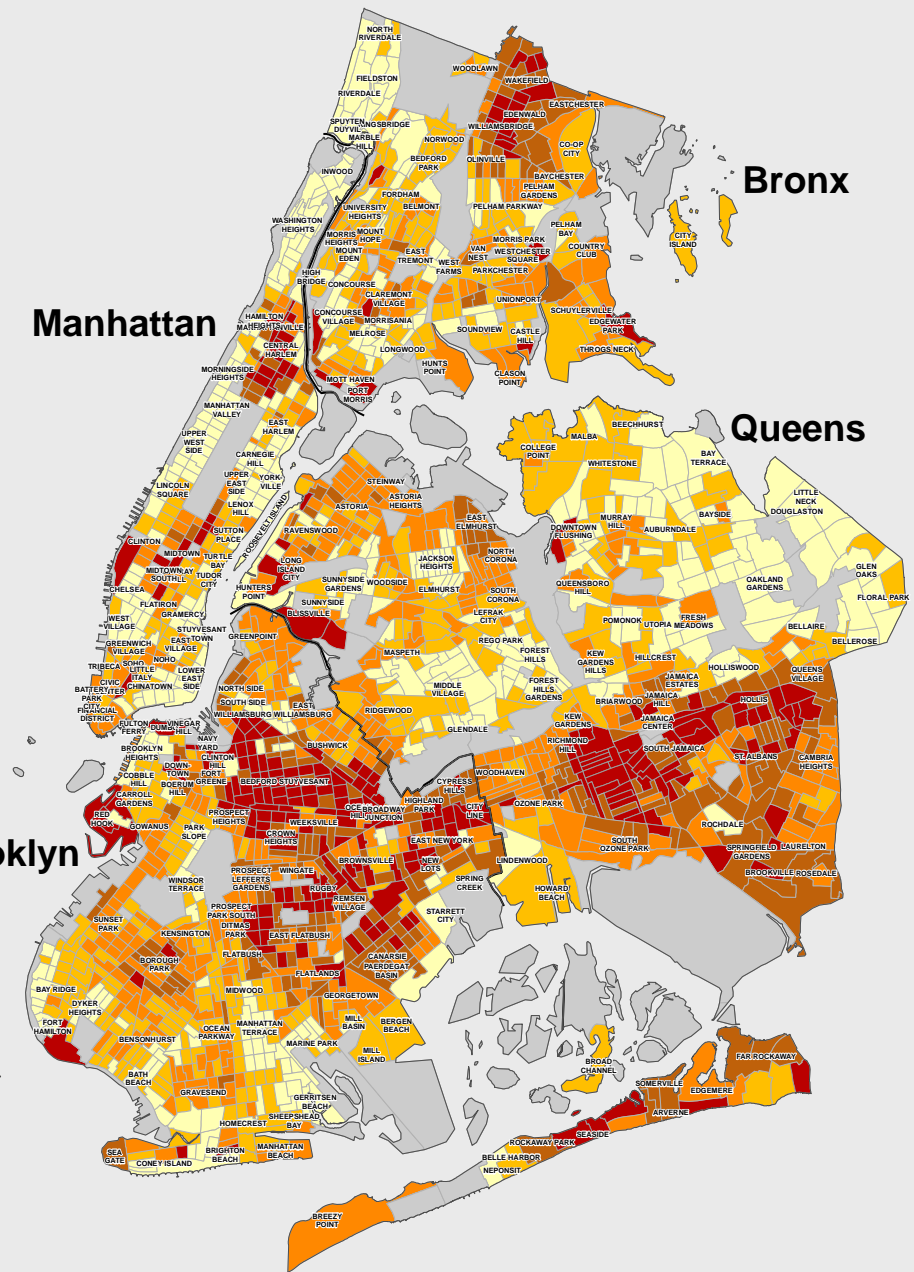
Response Rate (%)



Staten Island



Manhattan



Bronx

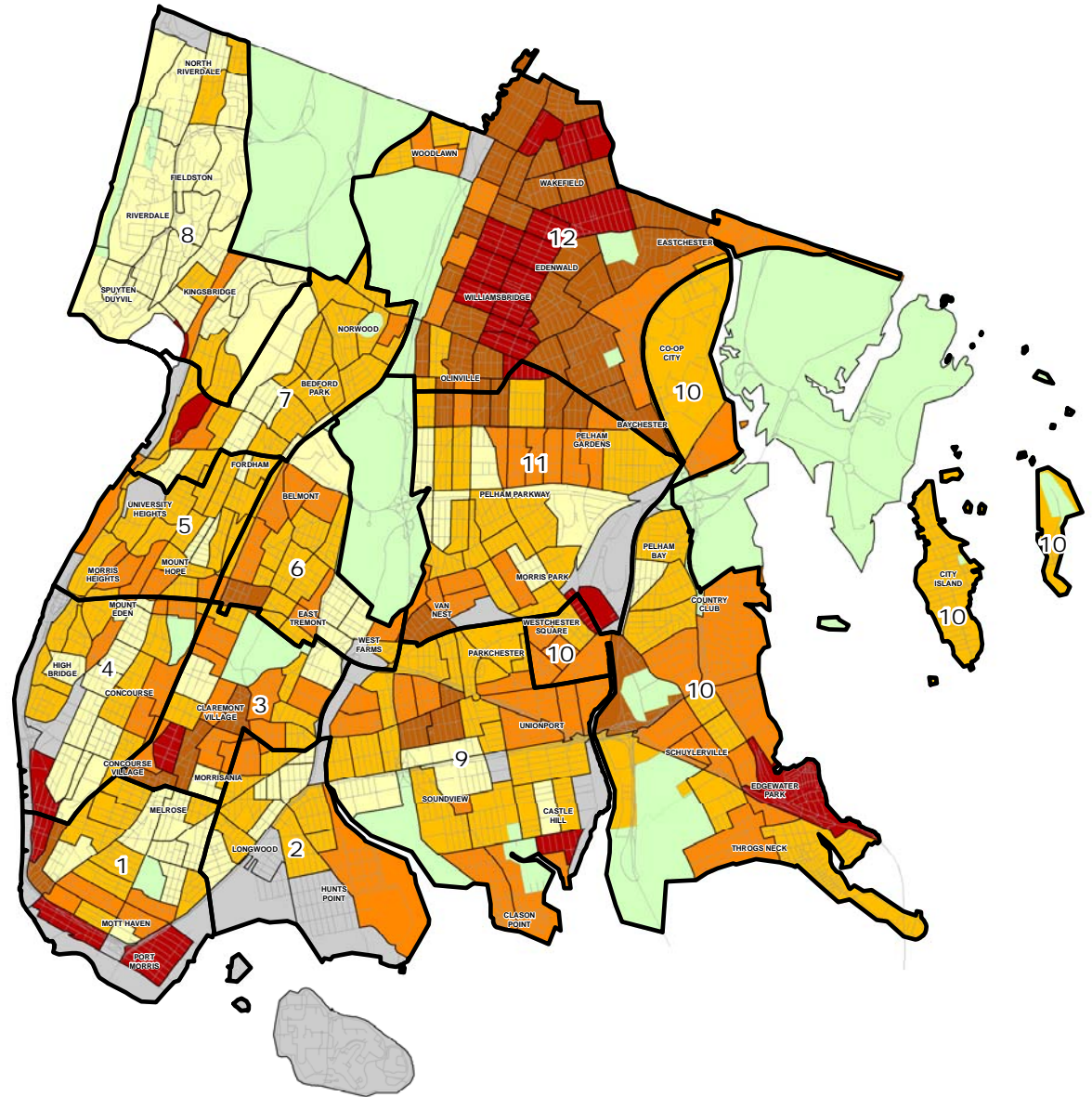
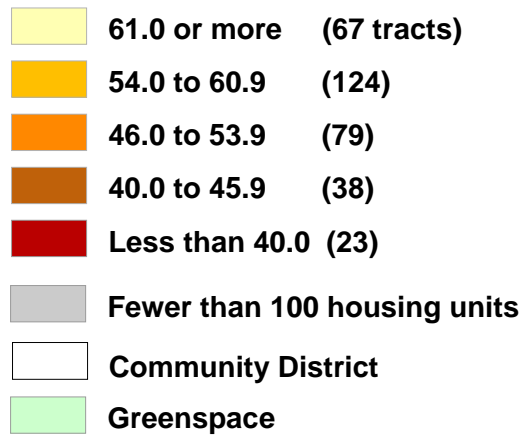
Queens

Brooklyn

* The response rate is calculated by dividing the number of returns by the total housing units that were mailed questionnaires. Returns included responses submitted on the Internet, over the telephone, and on "Be Counted" forms. Rates shown for census tracts with at least 100 housing units.

2000 Census Response Rates* Bronx Census Tracts

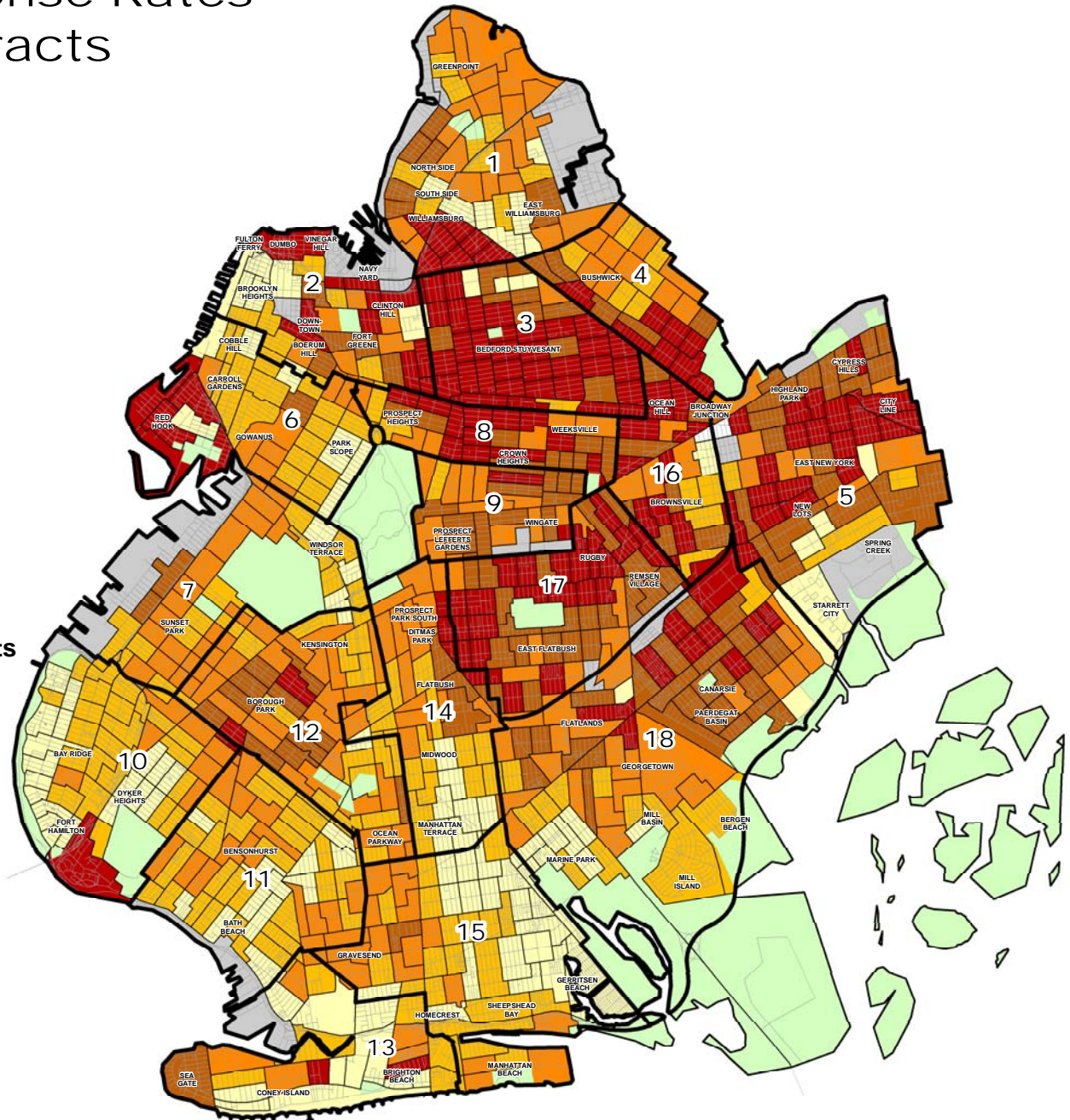
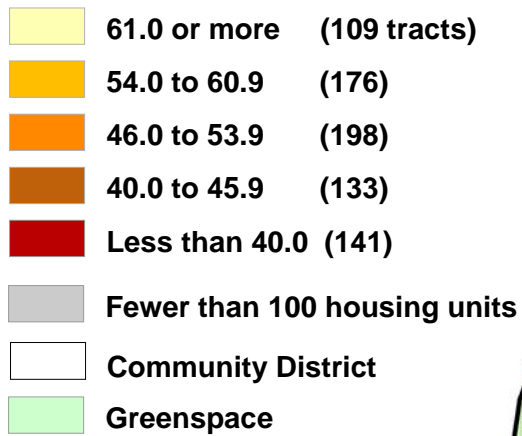
Response Rate (%)



* The response rate is calculated by dividing the number of returns by the total housing units that were mailed questionnaires. Returns included responses submitted on the Internet, over the telephone, and on "Be Counted" forms. Rates shown for census tracts with at least 100 housing units.

2000 Census Response Rates* Brooklyn Census Tracts

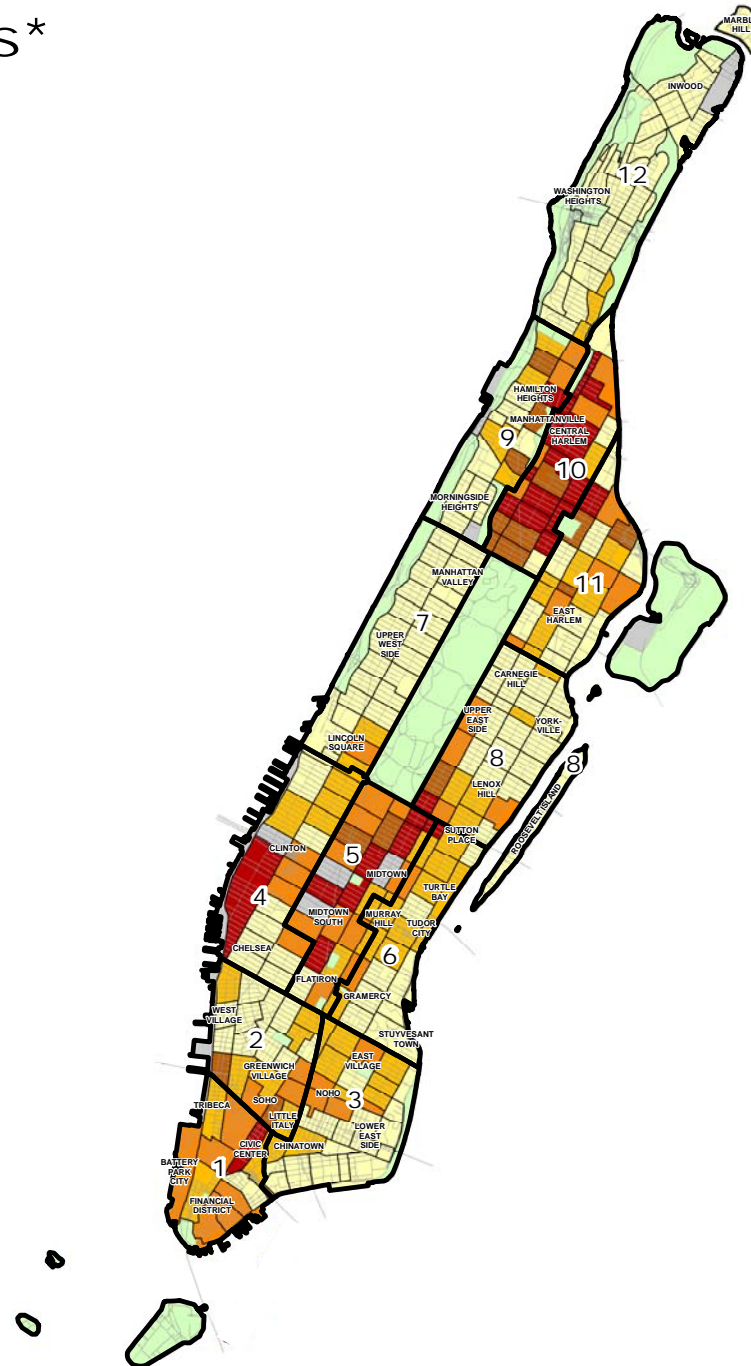
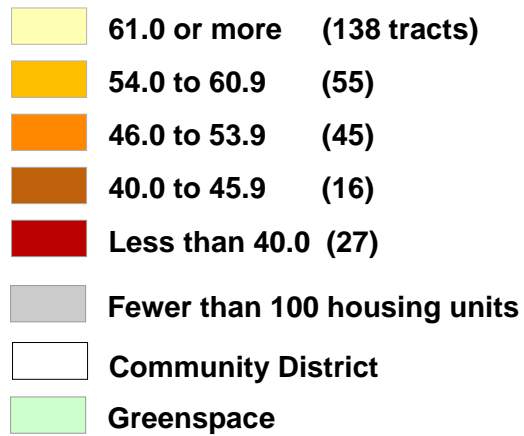
Response Rate (%)



* The response rate is calculated by dividing the number of returns by the total housing units that were mailed questionnaires. Returns included responses submitted on the Internet, over the telephone, and on "Be Counted" forms. Rates shown for census tracts with at least 100 housing units.

2000 Census Response Rates* Manhattan Census Tracts

Response Rate (%)



* The response rate is calculated by dividing the number of returns by the total housing units that were mailed questionnaires. Returns included responses submitted on the Internet, over the telephone, and on "Be Counted" forms. Rates shown for census tracts with at least 100 housing units.