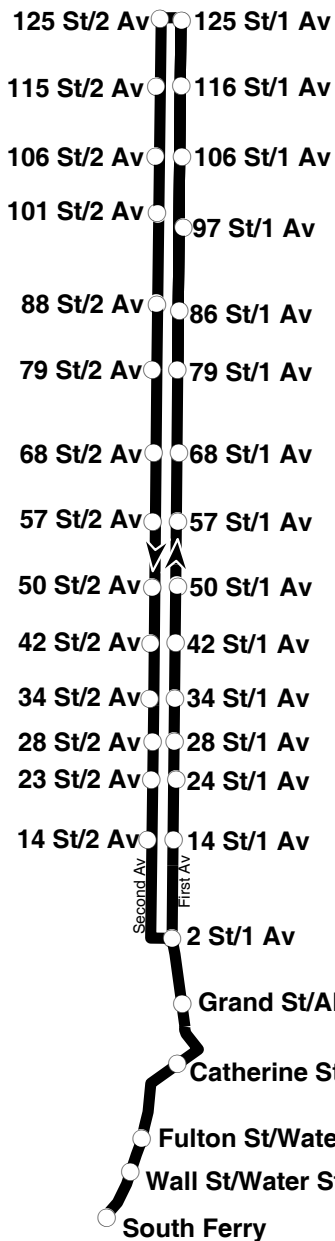


+selectbuservice

first avenue/second avenue

Newsletter 2 / Fall 2010

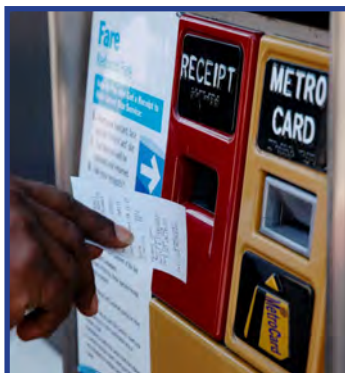
M15 SELECT BUS SERVICE BEGINS OCTOBER 10, 2010



Bus lanes bring faster and more reliable service to the 54,000 riders of the M15 bus



6 miles of new or improved bike lanes



Faster boarding with sidewalk fare payment



Safer street crossings with pedestrian islands

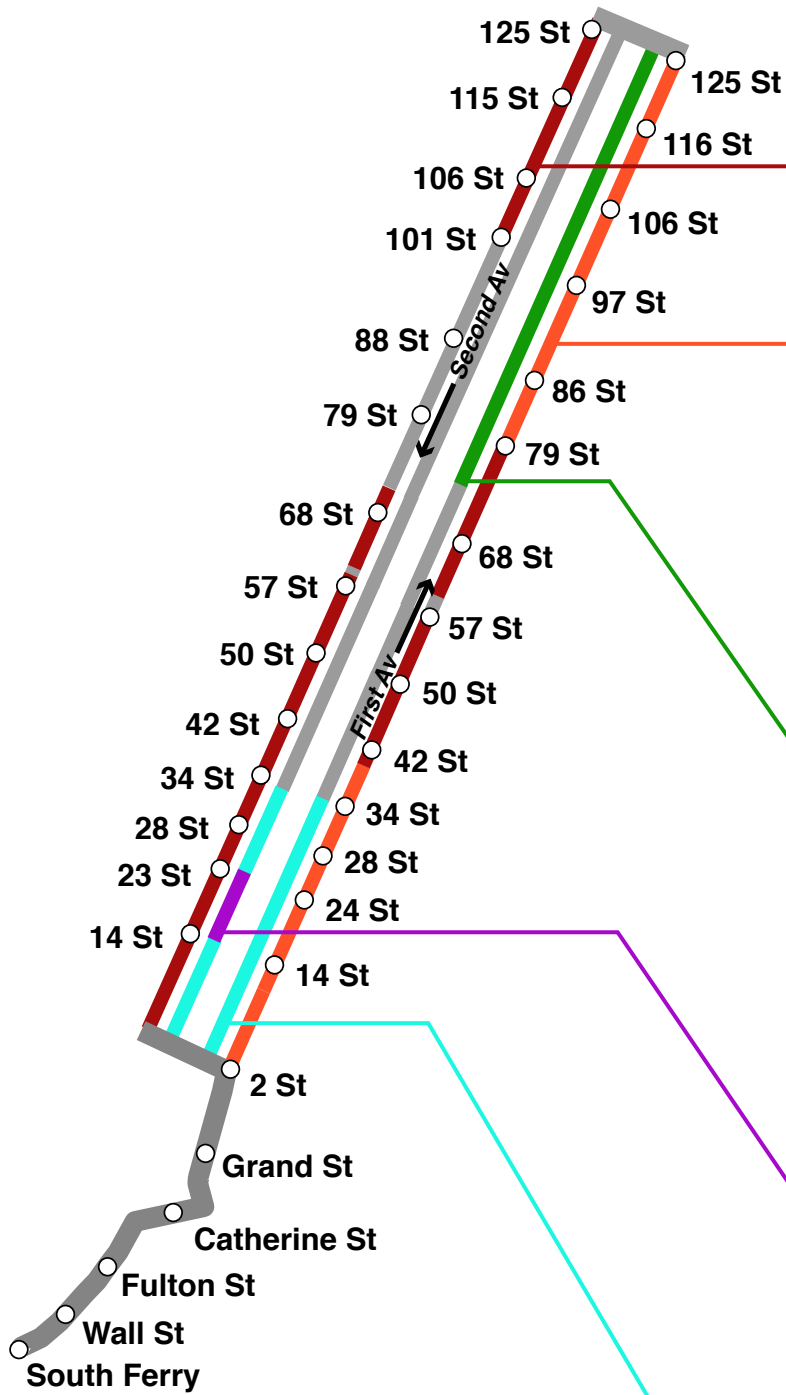


Faster, easier boarding on new low floor, three door buses

* SBS makes stops only at stations featured here

Open Houses on SBS will be held on September 27 & 28, 2010. (See back page for details)

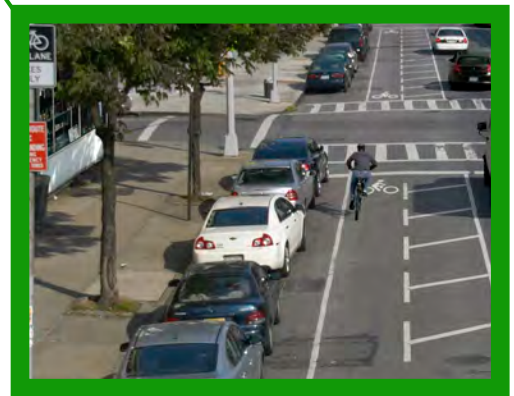
NEW STREET DESIGN: BUS AND BIKE LANES



Curbside Bus Lane



Offset Bus Lane



Offset Bike Lane



Protected Bike Path



Curbside Bike Lane

KEY

- Curbside Bus Lane
- Offset Bus Lane
- Offset Bike Lane
- Curbside Bike Lane
- Protected Bike Path
- No Change in 2010
- SBS Station

USER GUIDE

BUS RIDERS

- M15 SBS replaces M15 limited bus service
- M15 local service remains the same
- Faster and more reliable service for both SBS and local buses
- SBS fare = local bus fare



How do I pay my fare on SBS?

- Pay on the sidewalk at a Metrocard or coin machine (illustrated above) before boarding the bus
- Take your receipt
- Board the bus from any of the three doors—no need to show your receipt to the bus operator

A roving team of fare inspectors board buses to check receipts. Passengers without a valid receipt are subject to a \$100 fine.

DRIVERS

When a bus lane is in effect, stay out of the lane except to:

- Turn right at the next corner **OR**
- Quickly drop off or pick up passengers

Curbside bus lanes

- In effect 7-10 am and 2-7 pm on weekdays
- Commercial vehicle loading allowed 10 am-2 pm. Other times, load around the corner or across the street.
- Parking allowed weekdays 7pm-7am and all weekend

Offset bus lanes

- In effect at all times
- Located next to the curb lane

NYC enforces bus lanes with:

- Video cameras (coming November 2010)
- Increased police enforcement



\$115 to \$150 fine if you drive, park, or stand in an active bus lane.

CYCLISTS

- Bike in the direction of traffic
- Obey traffic signals
- Yield to pedestrians

PEDESTRIANS

- Cross the street at the corner and use pedestrian refuge islands
- Watch for cyclists in protected bike path

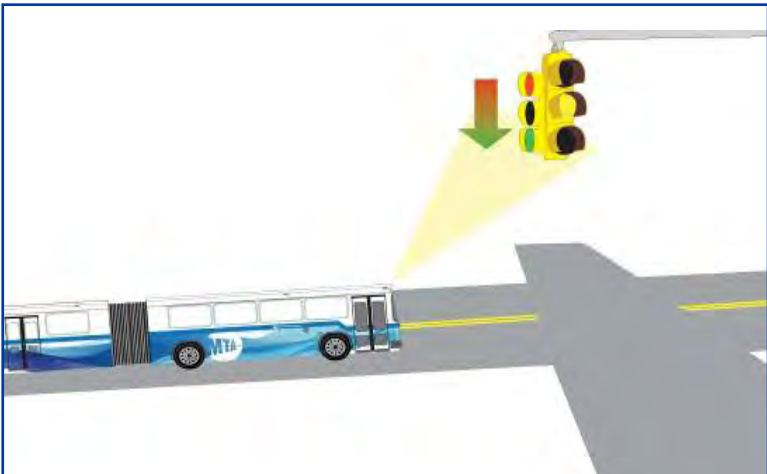


COMING IN 2011, 2012



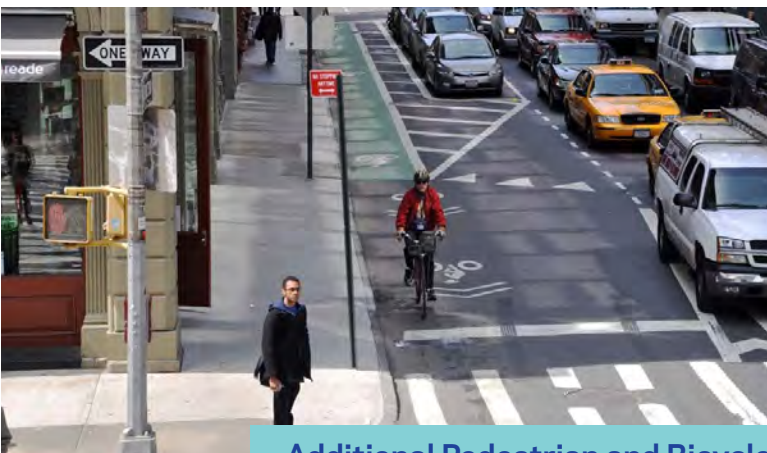
Bus Bulbs

Sidewalks will extend out to the bus lane at SBS stations.



Transit Signal Priority

Traffic signals will extend the green light or shorten the red light to keep buses moving.



Additional Pedestrian and Bicycle Safety Improvements

OPEN HOUSES

Please attend a public open house to learn more about M15 Select Bus Service on First/Second Avenues.

**Monday, September 27, 2010
6:30pm-8:30pm**

Phillips Ambulatory Care Center
Freeman Conference Room, 2nd Floor
10 Union Square East, New York, NY
(between 14th St. & 15th. St.)

**Tuesday, September 28, 2010
6:30pm-8:30pm**

Temple Israel of the City of New York
Ballroom
112 East 75th Street, New York, NY
(between Lexington Ave. & Park Ave.)



STAY INFORMED!

- Contact **Kate Mikuliak**, NYCDOT's BRT Outreach Coordinator, at **212-839-6429** or kmikuliak@dot.nyc.gov.
- Visit Our Website: www.nyc.gov/brt for updated project information.



www.twitter.com/nyc_dot



www.facebook.com/nycdot