

B46 Select Bus Service

Community Board 17 Transportation Committee | February 9, 2016



Agenda

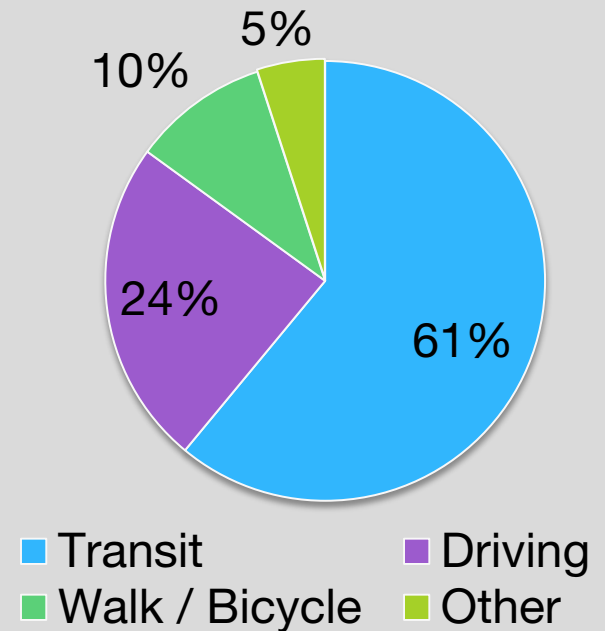
1. Provide an update about the project to date
2. Present SBS and local bus stop configurations in CB17 for 2016 and capital plan
3. Present additional capital pedestrian safety improvements in CB17
4. Discuss issues and concerns regarding capital plans and SBS launch

Project Background

The Utica Avenue B46 corridor was identified as a potential candidate for Select Bus Service in the 2009 Bus Rapid Transit Phase II Study.

- Characterized by slow and crowded trips
- Busiest bus route in Brooklyn, carrying nearly 50,000 passengers per day
- Crucial connection to **3** **4** **A** **C** trains and 30 bus routes
- Vision Zero Priority Corridor
 - 7 pedestrians killed and 57 pedestrians severely injured (2009-2013)

Residents' Mode to Work



Source: 2008-2012 ACS 5-Year Estimates
¼ mile from B46 corridor

Utica Avenue Outreach

Outreach for the 2014 Bus Improvement Project (2013-2014)

- Meetings with Community Boards, local businesses, and elected officials

Outreach for Select Bus Service

- Community Advisory Committee Meeting #1 (September 2014)
- Public Workshop #1 (November 2014)
- Community Advisory Committee Meeting #2 (February 2015)
- Open House (March 2015)
- Community Board Meetings along B46 corridor (March-April 2015)



Implemented Improvements

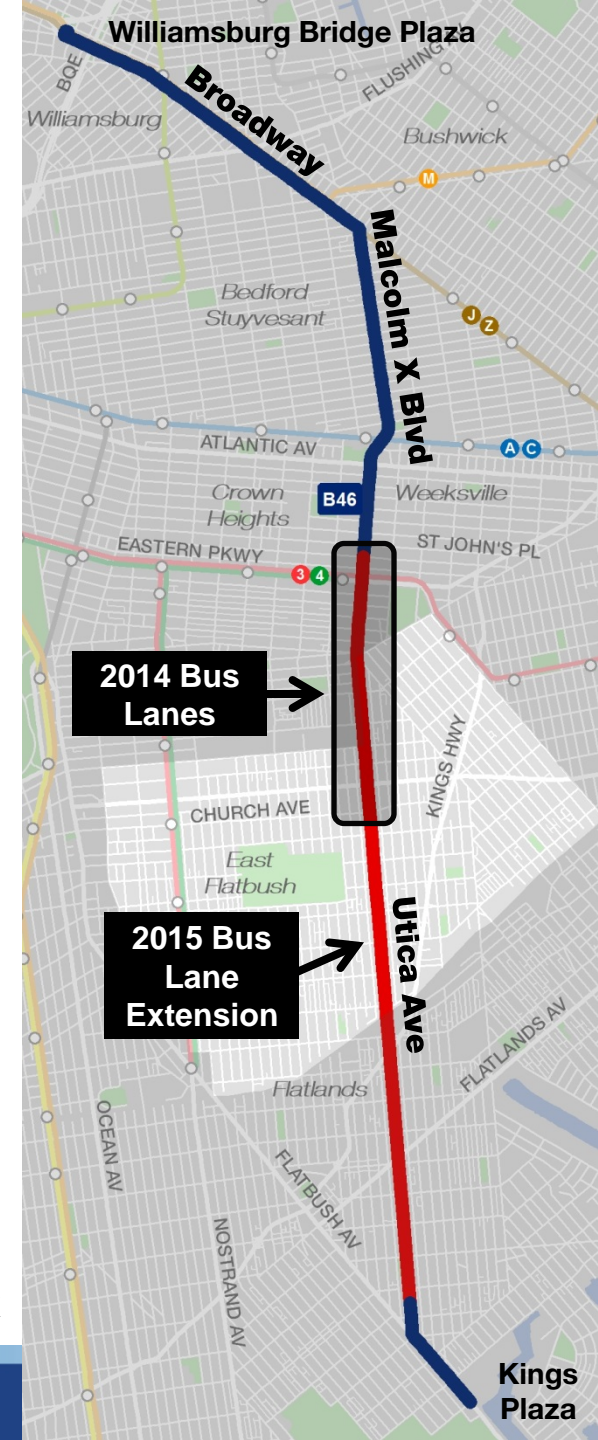
St. Johns Place to Church Avenue (Implemented Summer 2014)

- Added bus lanes, left-turn bays, and turn restrictions
- B46 Limited and local travel times decreased 8% to 15%*
- Vehicle travel times decreased 20% to 25% in peak direction*

Church Avenue to Fillmore Avenue (Implemented Summer 2015)

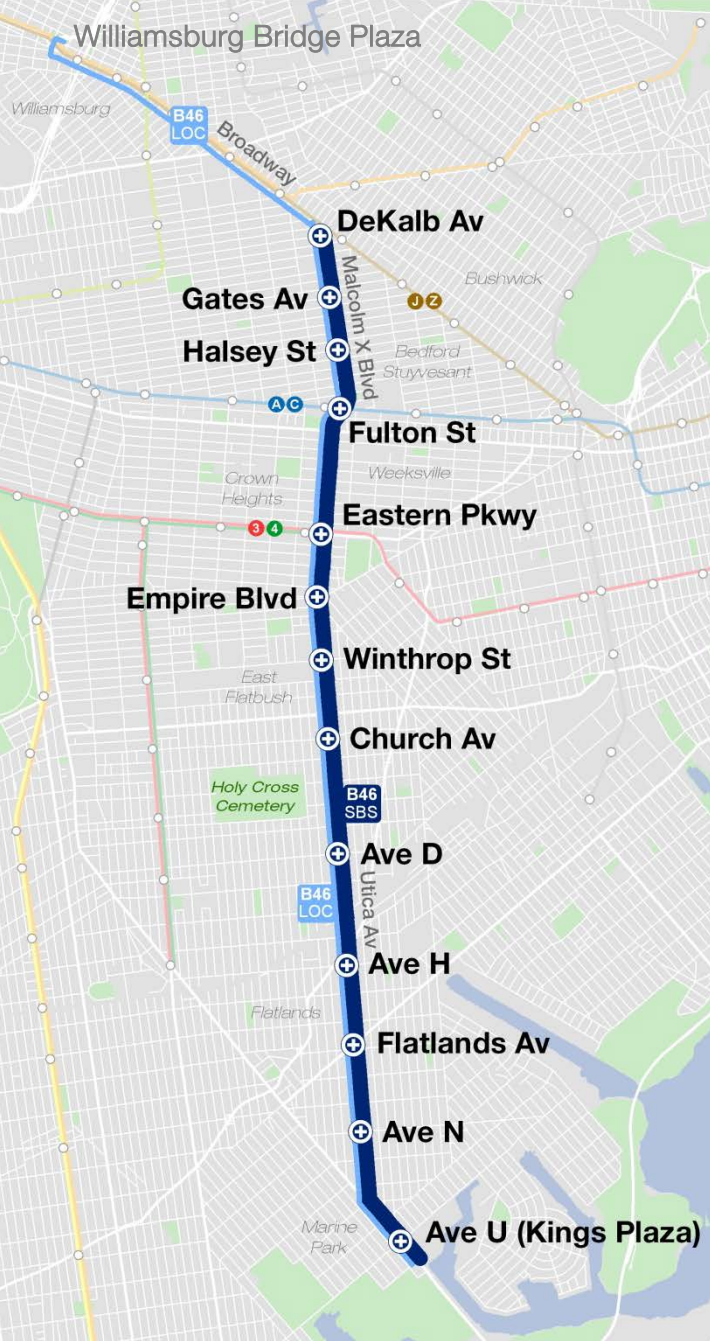
- Added bus lanes, left-turn bays, turn restrictions, ped islands
- Added truck loading zones, update curb regulations
- Implemented transit signal priority

*AM and PM peak



B46 Select Bus Service Route

- B46 SBS will run between Avenue U (Kings Plaza) and DeKalb Avenue
- B46 Local will run between Avenue U (Kings Plaza) and Williamsburg Bridge Plaza



B46 SBS Within Community Board 17



2016 Select Bus Service Improvements

- Resurface Utica Avenue from Clarkson Avenue to Kings Highway
- Adjust bus stops for SBS service
- Install fare machines
- Install Bus Time wayfinding signs
- Install new shelters and benches where feasible

**SBS Service
Launches Spring 2016**



*Fare Machines and Bus Time Wayfinding Sign
86th Street & Central Park West, Manhattan*

Select Bus Service Capital Improvements

Long-Term (2017-2018)

- Construct bus bulbs at SBS stops south of Eastern Parkway
- Add curb extensions, pedestrian islands, and high-visibility crosswalks
- Resurface Utica Avenue south of Flatlands Avenue



*Bus Bulb Example
34th Street & Eight Avenue, Manhattan*

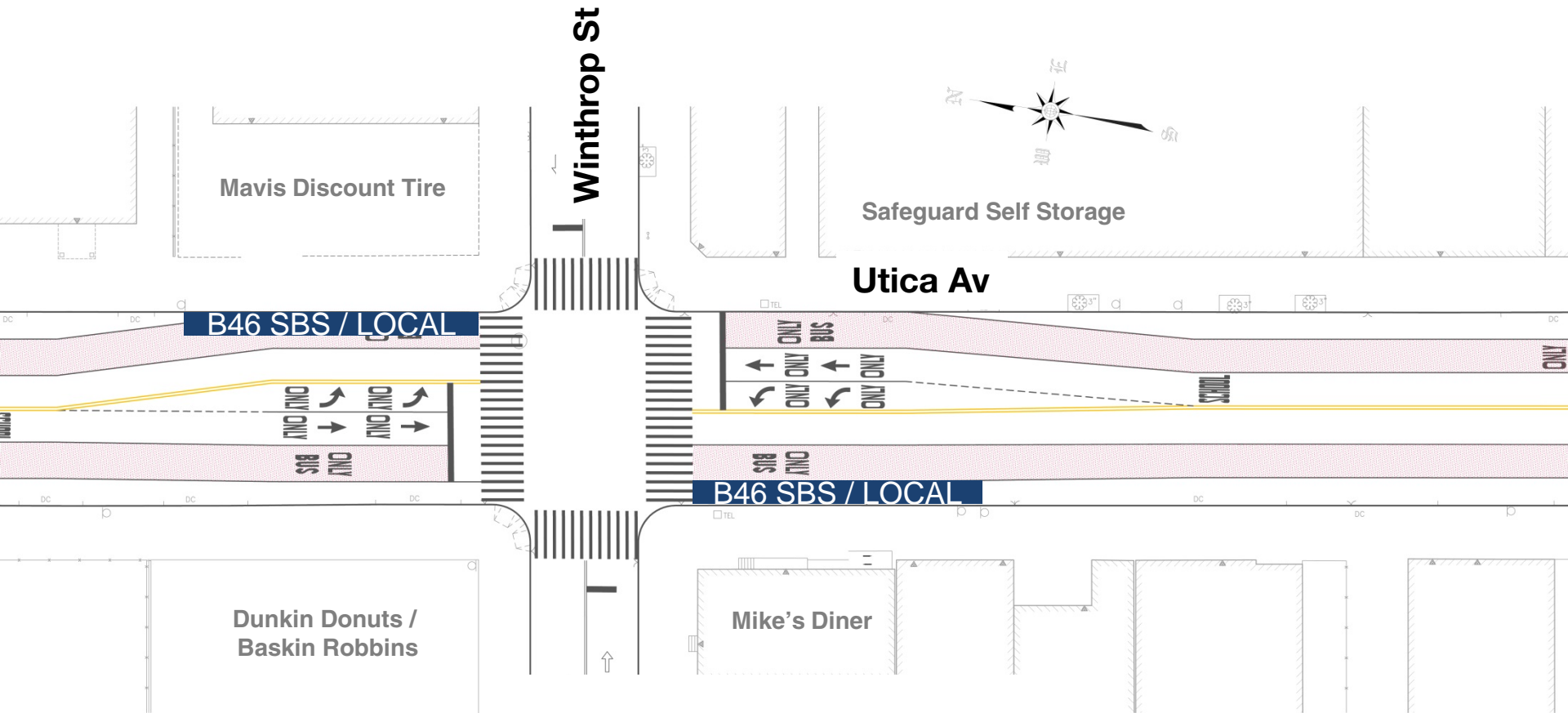
Community Board 17

SBS Stops

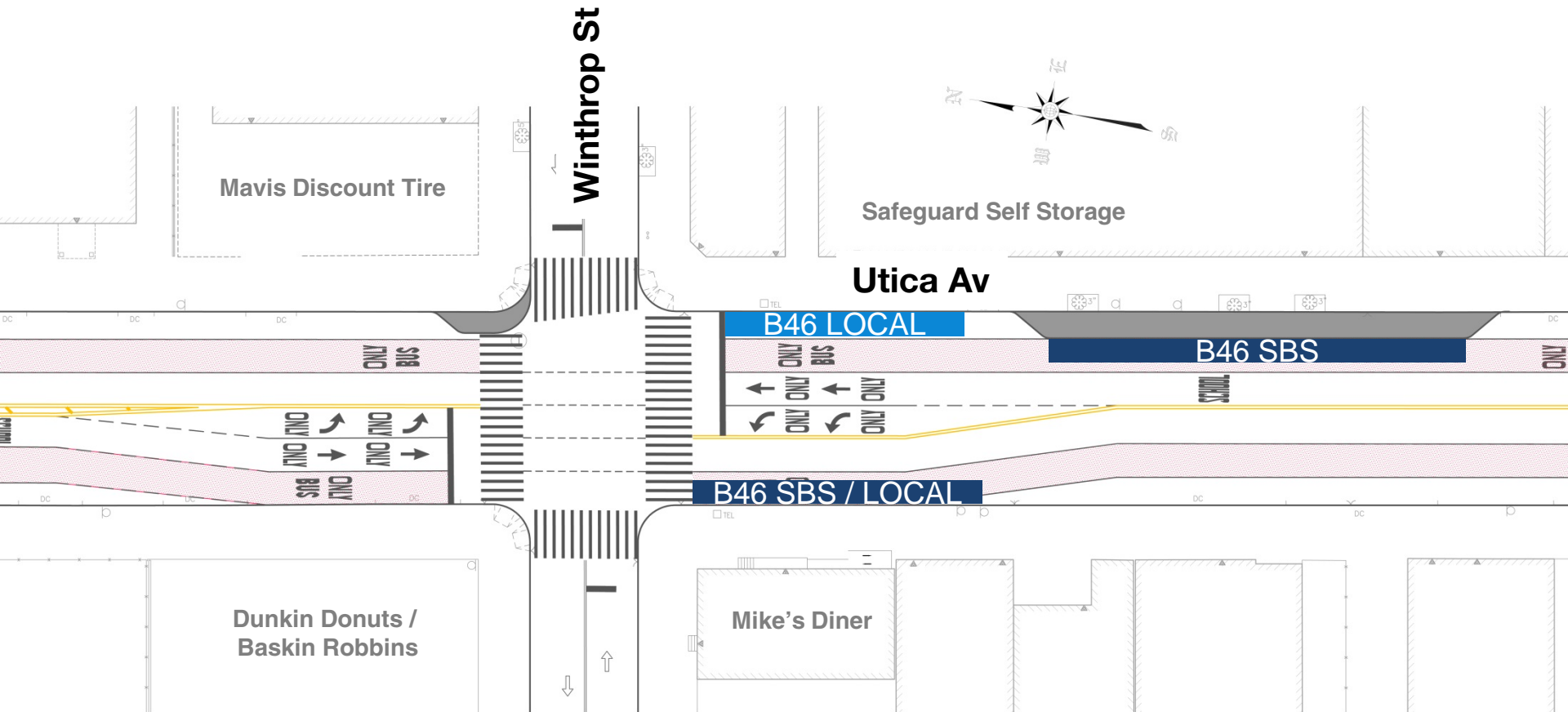
Utica Avenue and Winthrop Street



Utica Avenue and Winthrop Street 2016 Plan



Utica Avenue and Winthrop Street Capital Plan

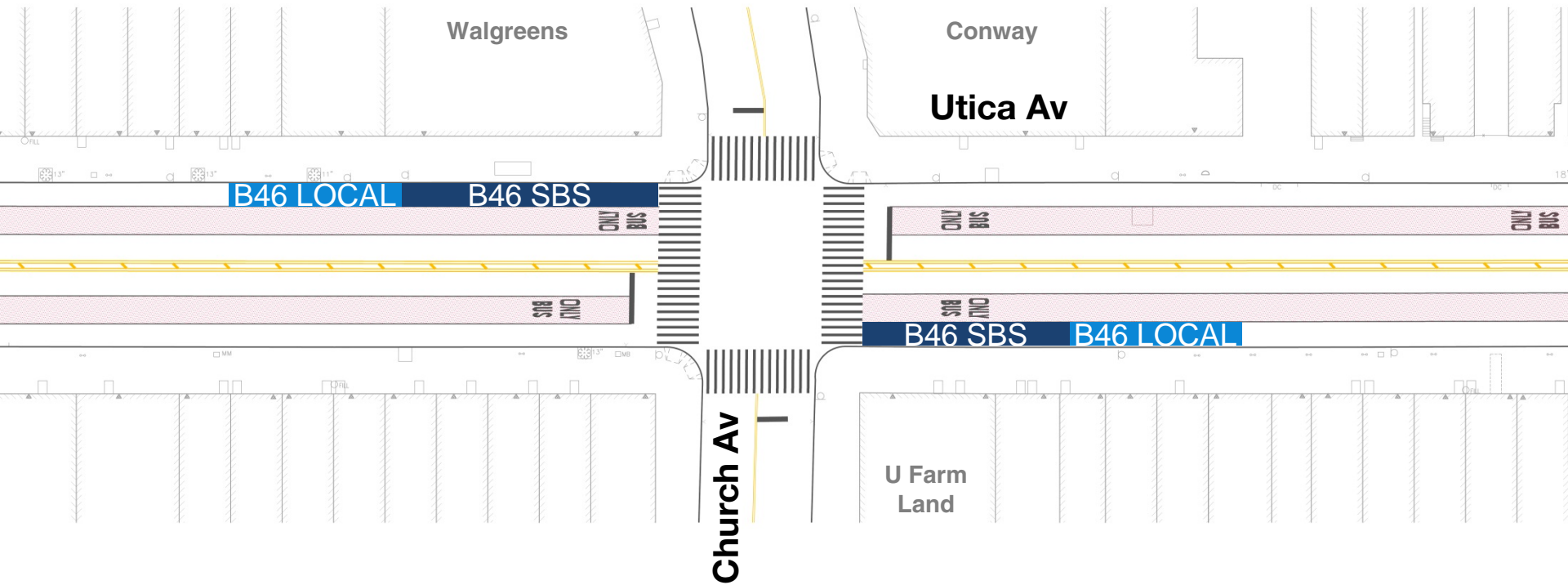


Utica Avenue and Church Avenue

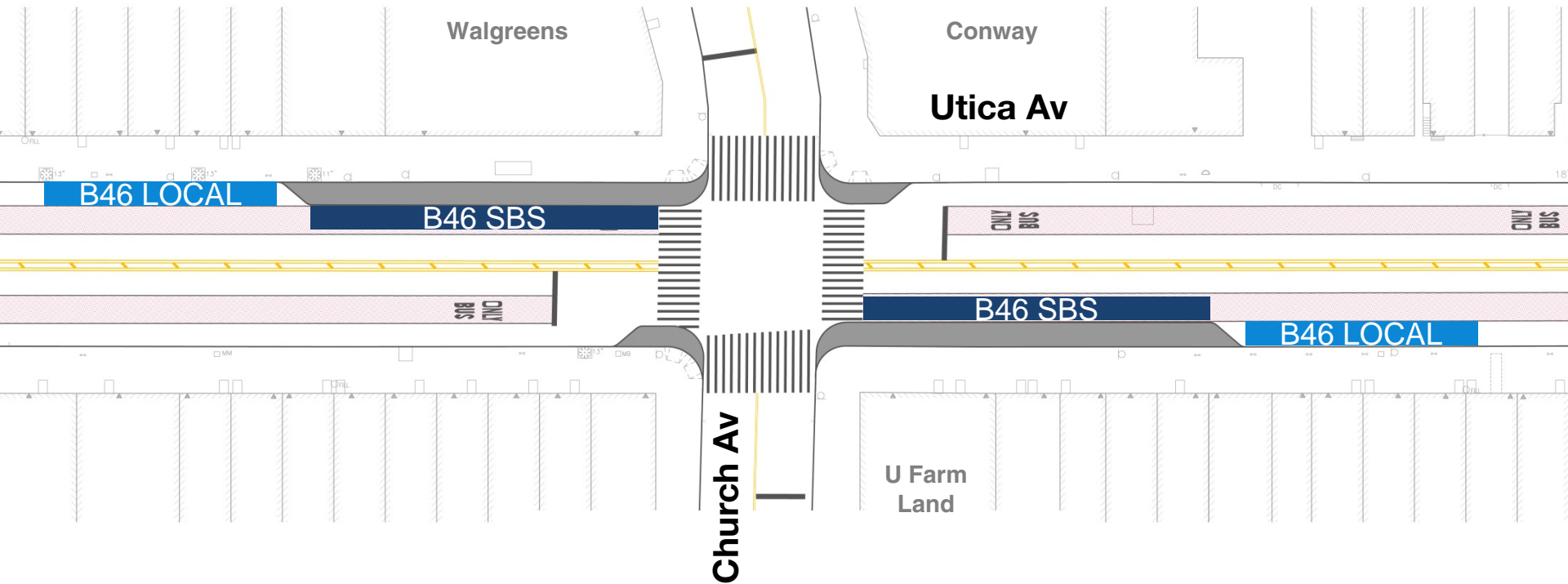


Utica Avenue and Church Avenue

2016 Plan



Utica Avenue and Church Avenue Capital Plan

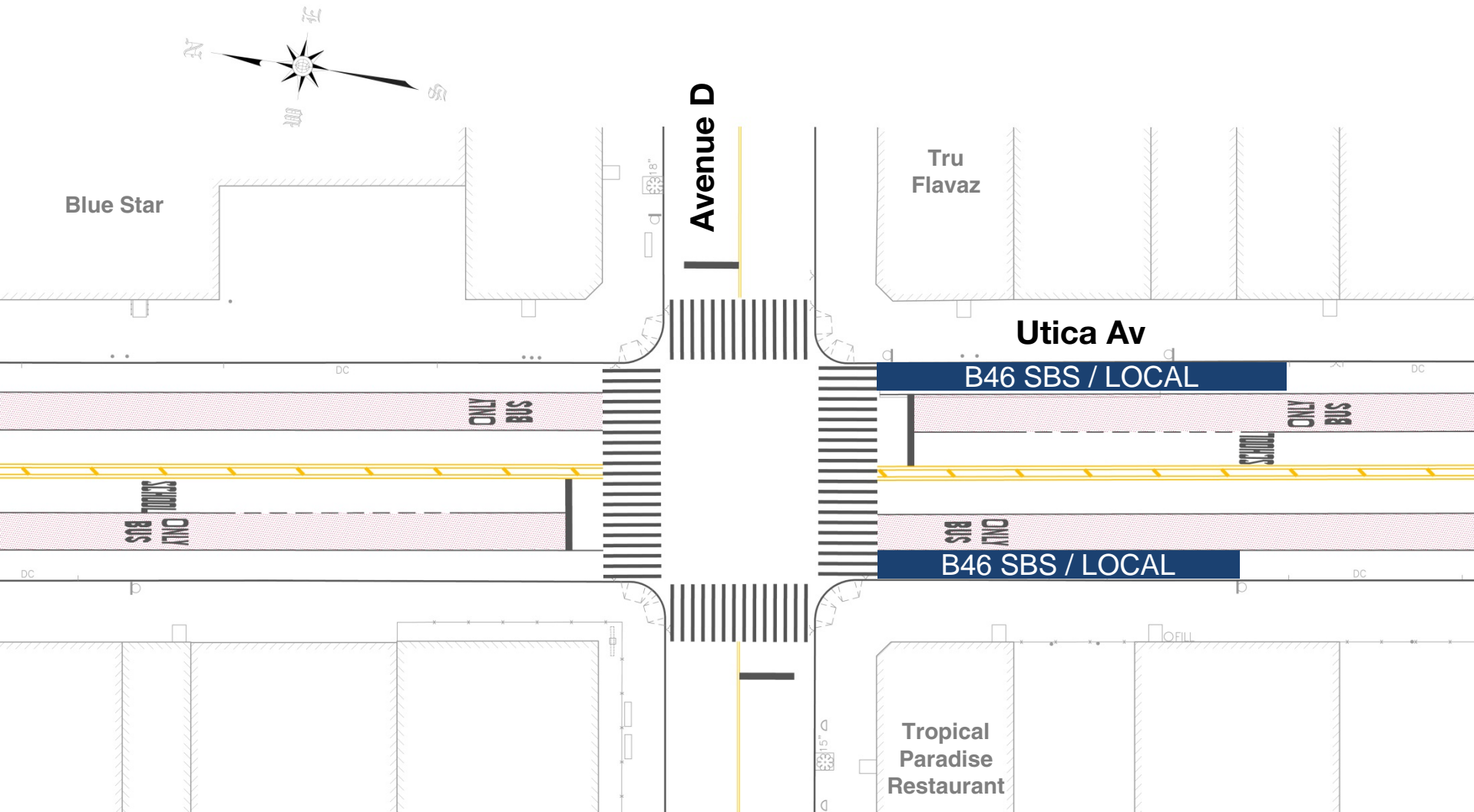


Utica Avenue and Avenue D

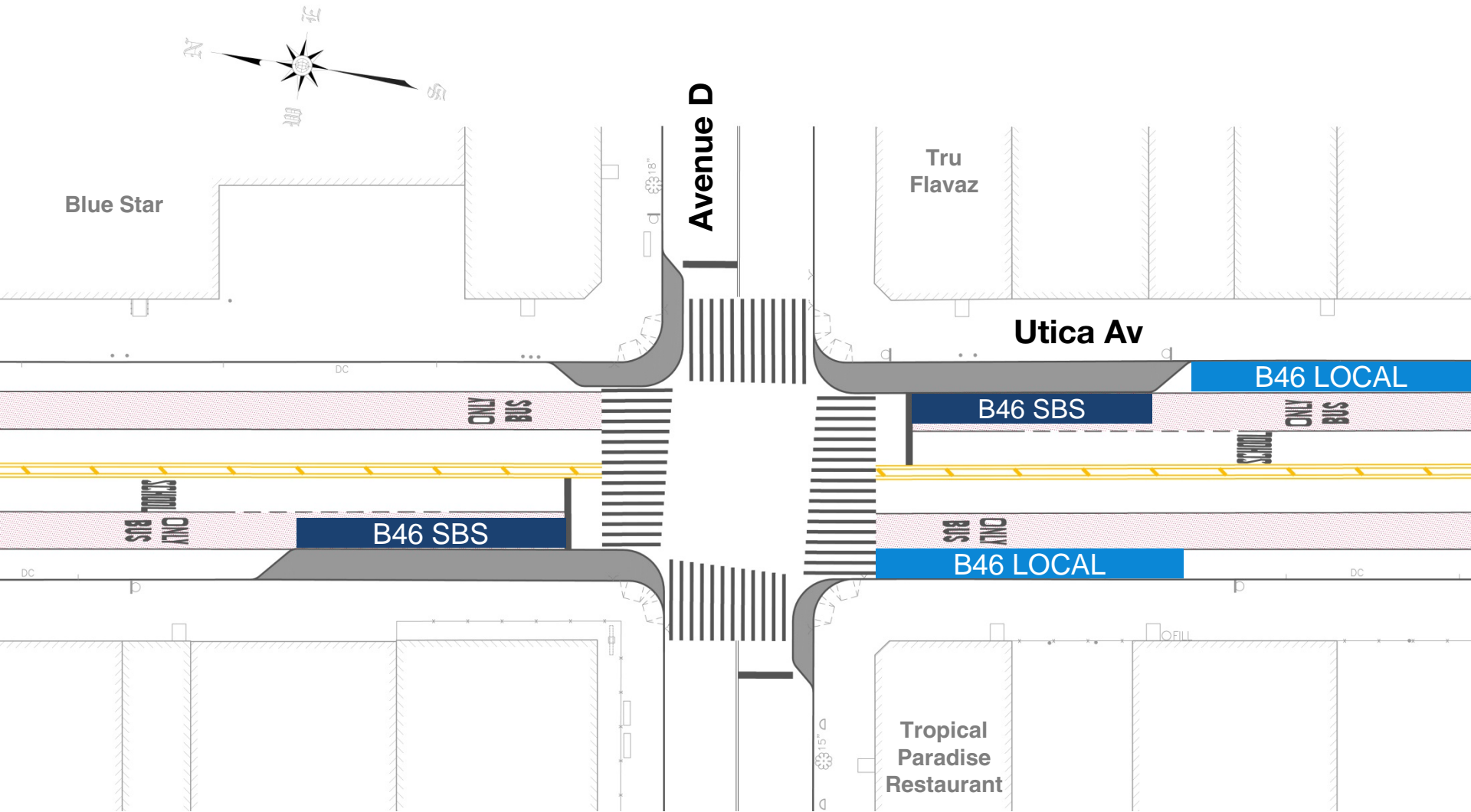


Utica Avenue and Avenue D

2016 Plan

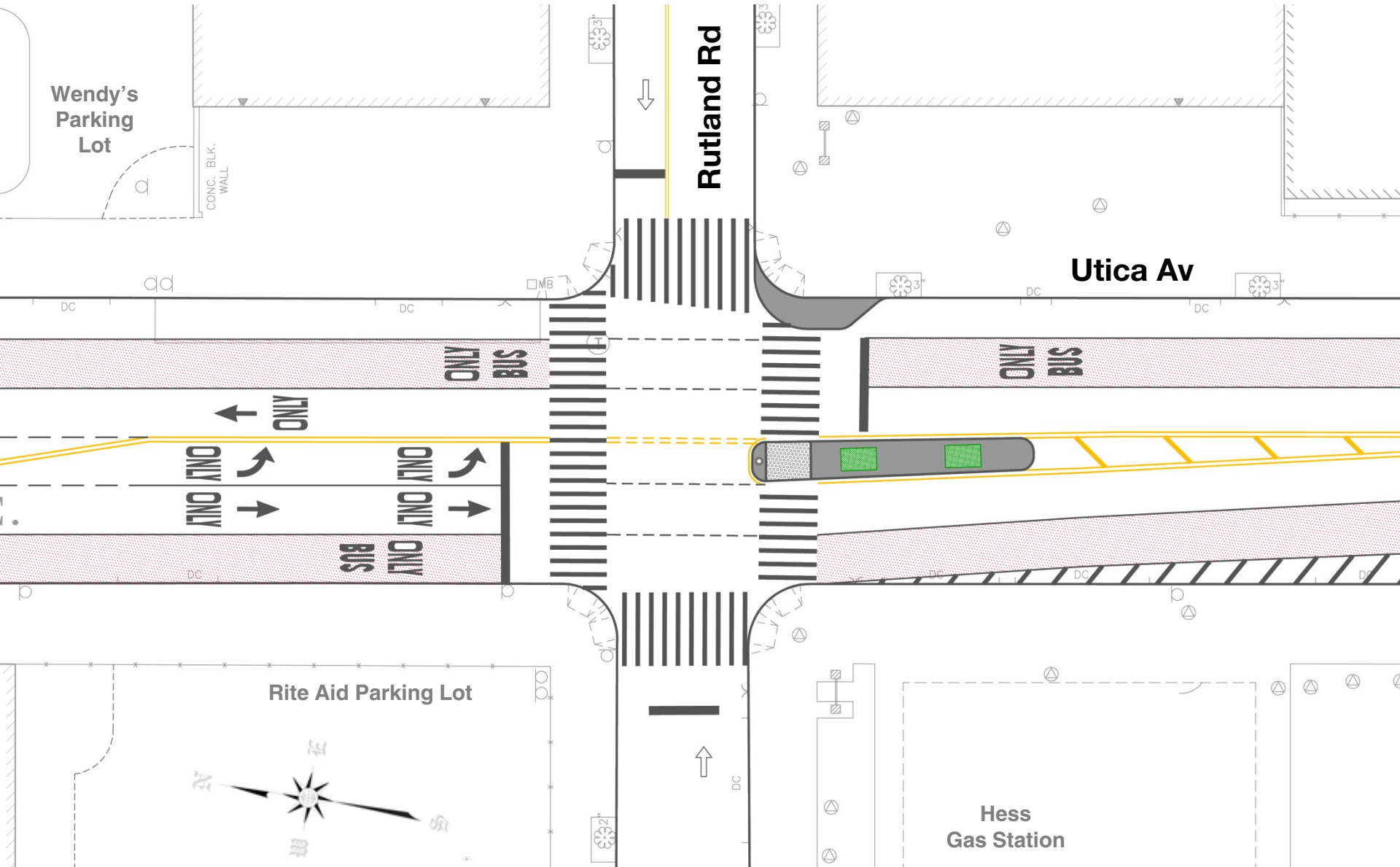


Utica Avenue and Avenue D Capital Plan

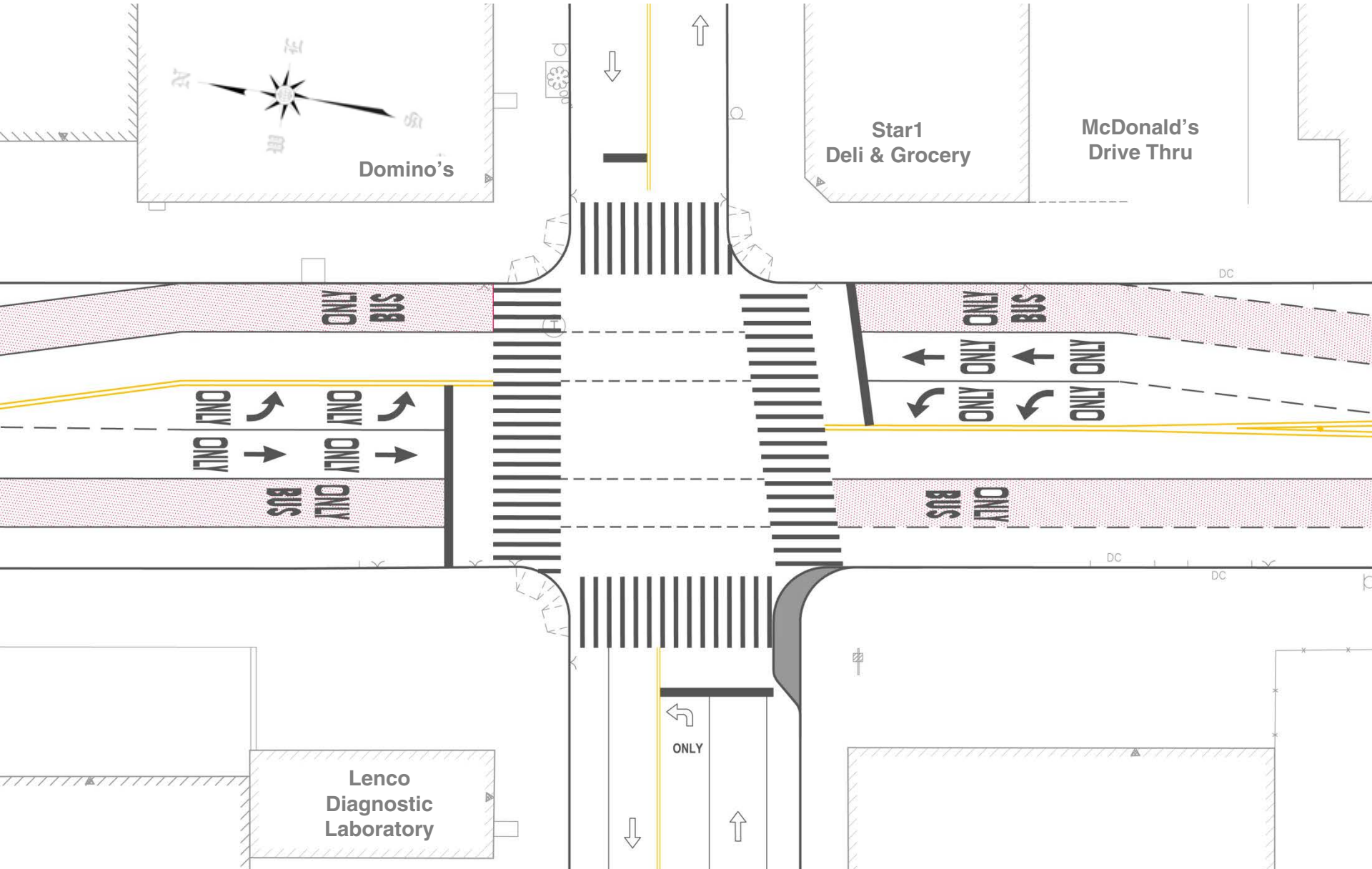


Community Board 17 Pedestrian Safety Capital Improvements

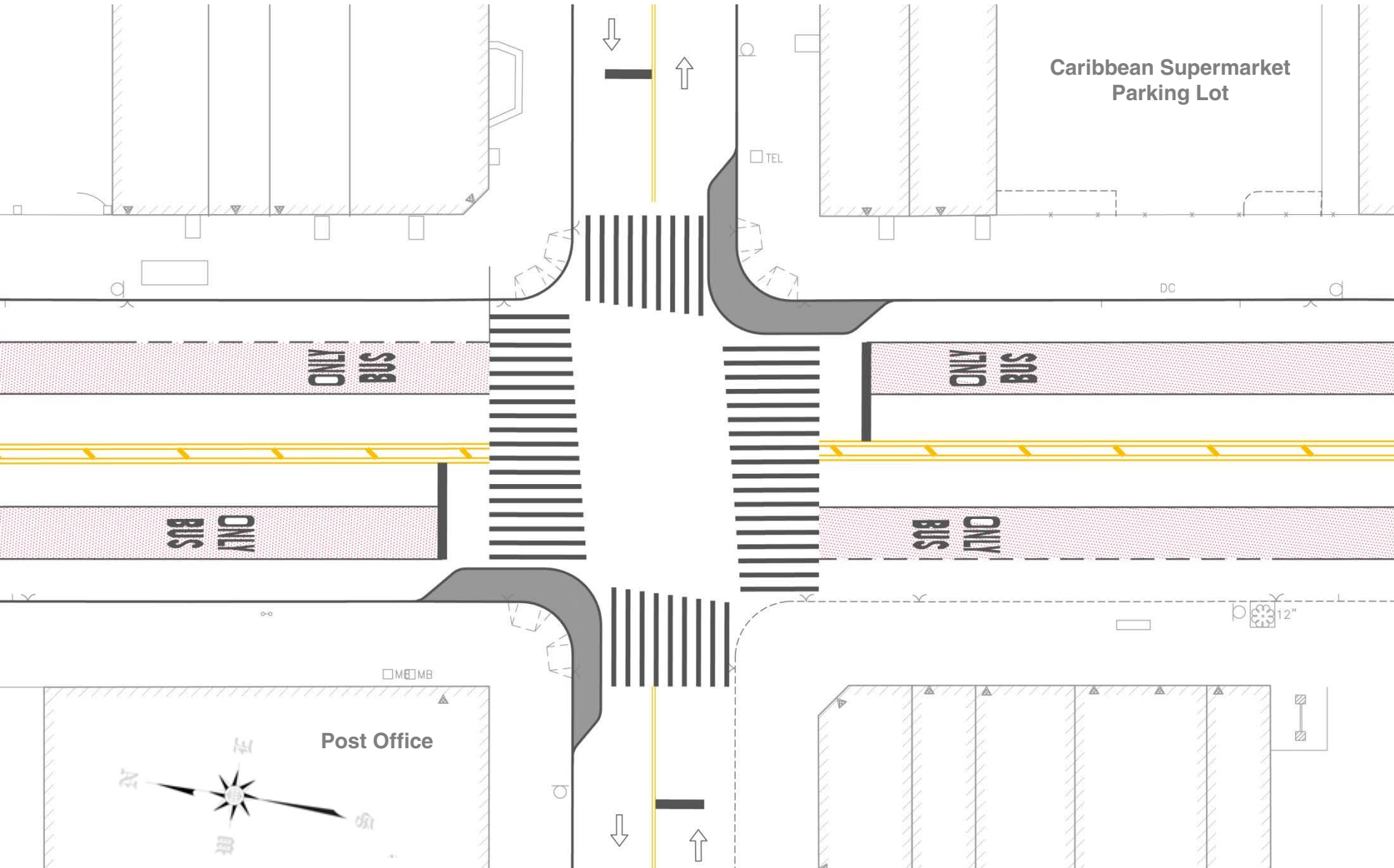
Utica Avenue and Rutland Road



Utica Avenue and Clarkson Avenue

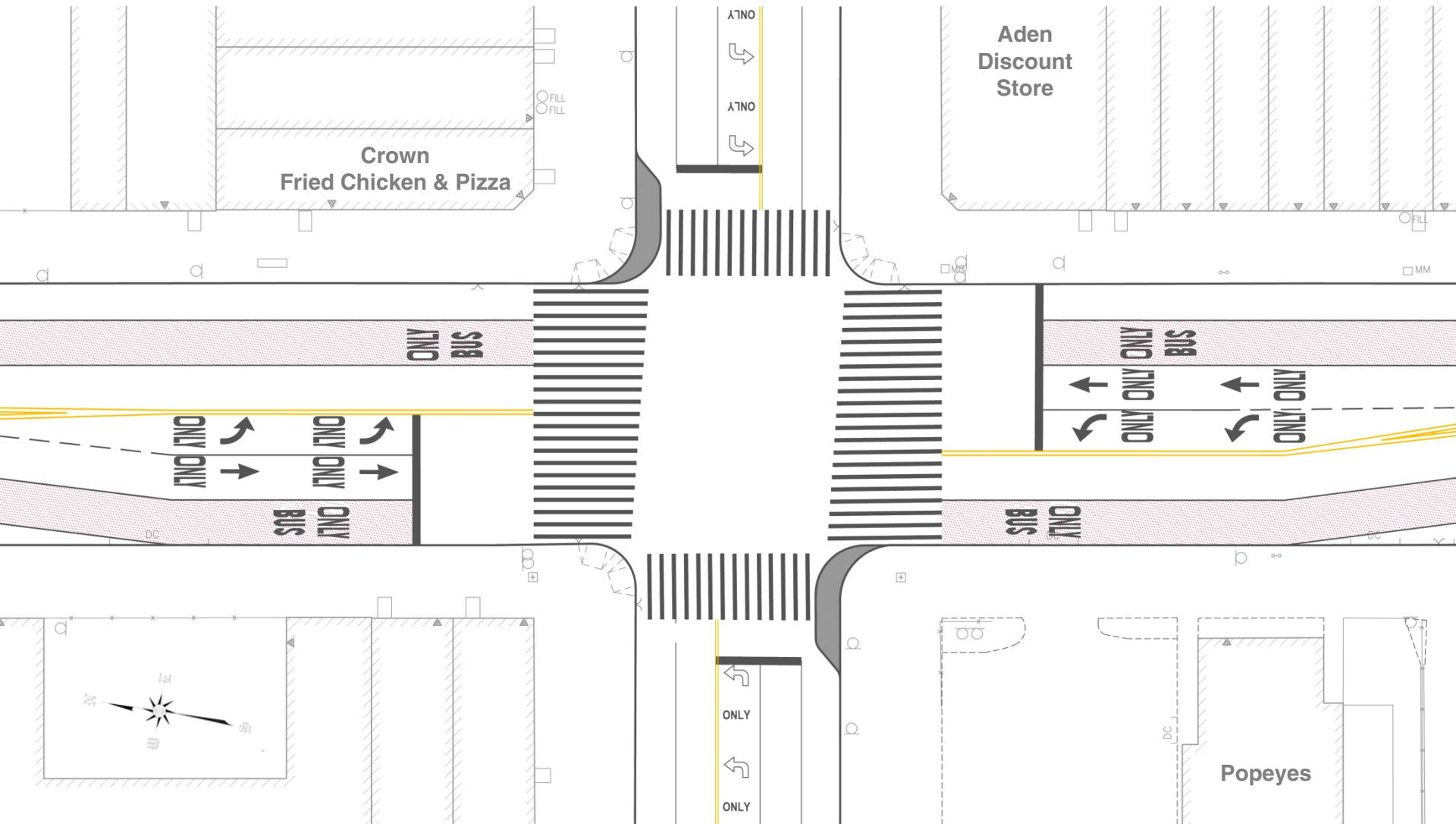


Utica Avenue and Lenox Road



Utica Avenue and Linden Boulevard

Capital Plan



Next Steps

SBS Launch

- Winter 2016
 - Begin fare machine installation
- Spring 2016
 - Resurface Utica Avenue (Clarkson Avenue to Kings Highway)
 - Restore markings and paint red bus lane on new pavement
 - Launch SBS service

Capital Improvements

- 2016: preliminary and final design
- 2017-2018: construction

Questions?



New York City Transit

+selectbusservice

