

B82 Southern Brooklyn Select Bus Service

For presentation to CB 15 Transportation Committee | March 13, 2018



Overview

- **Project Background**
- **B82 SBS Plan & Street Designs**
- **Next Steps**
- **Questions and Discussion**

B82 Project Background

The Southern Brooklyn B82 corridor was identified as a potential candidate for Select Bus Service in the 2009 Bus Rapid Transit Phase II Study.

- Serves 28,000 daily riders on B82 Limited and Local
- Heavily used route with slow trips
- Important east-west transit connection across Southern Brooklyn
- Connects to **D** **N** **F** **B** **Q** **L** subway lines and 21 bus routes, including B44 Nostrand SBS and B46 Utica SBS
- Serves areas far from the subway



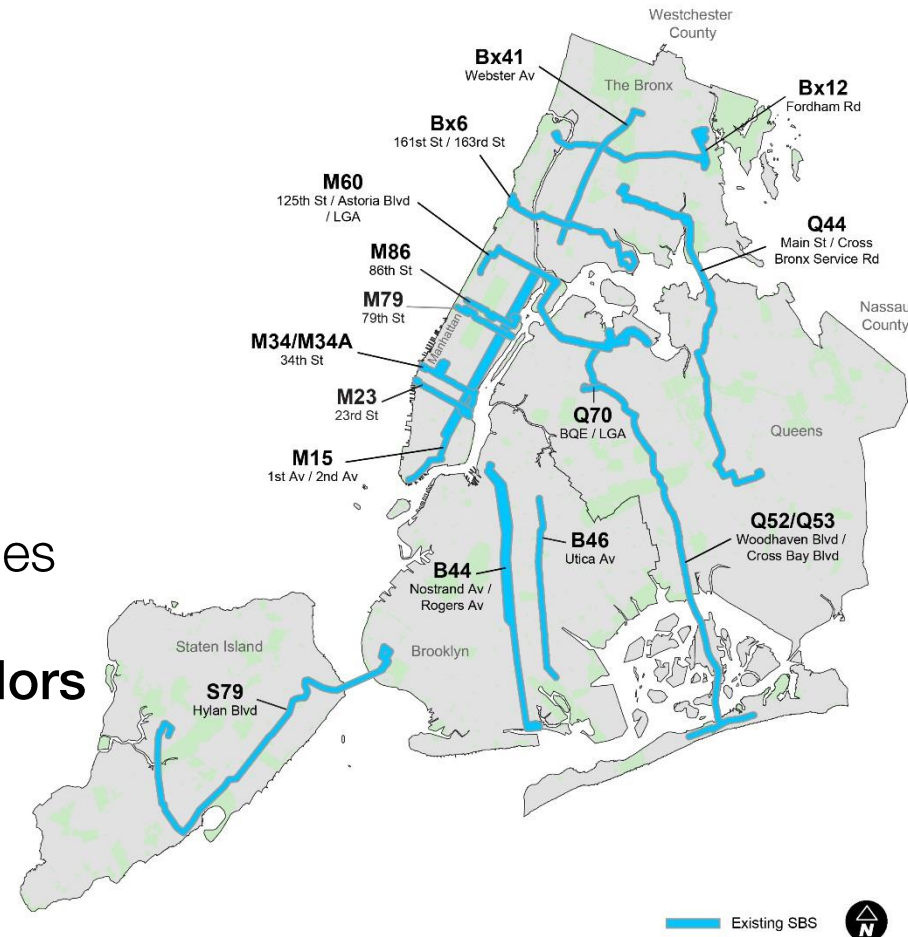
Select Bus Service in New York City

Select Bus Service (SBS) is New York City's brand name for Bus Rapid Transit: an improved bus service that offers fast, frequent, and reliable service on high-ridership bus routes.

SBS has brought:

- 10-30% faster bus speeds
- About 10% increase in ridership
- More reliable service
- Customer satisfaction of 95%
- Safer streets / reduction in crashes

There are 15 Select Bus Service corridors in operation serving all 5 boroughs.



Select Bus Service Features

Dedicated Bus Lanes



Signal Priority for Buses



- **Faster** bus rides
- **Reduced traffic conflicts** between buses and traffic
- **More reliable** bus service
- Buses spend **less time stopped** at red lights

Off-Board Fare Collection



All-Door Boarding



- **Quicker** bus boarding
- Buses spend **less time waiting** at bus stops

Select Bus Service Features

Improved Station Amenities



Real-Time Passenger Information



- **More attractive, appealing** bus stops
- **Better trip information** for riders to **know when** the bus is coming
- **More comfortable wait** for the bus

Pedestrian Safety Improvements



- **Better visibility** for pedestrians, bus operators, and drivers
- **Clearer, shorter** pedestrian crossings

Community Engagement

- **Borough Hall Kickoff Meeting (2015)**
- **Online Feedback Portal**
 - Site is still live at nycdotfeedbackportals.nyc
- **Stakeholder Meetings**
 - **40+** meetings to date across the corridor
 - Civic associations, schools, senior centers, libraries, places of worship, medical centers
- **On-Street Outreach**

Over **1500** passengers reached at **12** Bus Stops

 - **3000** project information cards distributed
- **Community Board Meetings**



Community Engagement

2015

- Elected Officials Briefing Kickoff
- Kings Highway BID Meeting
- On-Street Outreach:
 - Pennsylvania Ave
 - Kings Highway at E 15th St
 - Ralph Ave at Flatlands Ave
 - Bay Parkway at 86th St
 - Glenwood Rd at Rockaway Parkway
 - Flatlands Ave at Rockaway Parkway
 - Bay Parkway at 86th St #2
 - Kings Highway at W. 7th St
 - Kings Hwy at McDonald Ave
 - Kings Hwy at Ocean Ave
 - Kings Hwy at E. 15th St #2
- Brooklyn Borough Service Cabinet Presentation
- Kings Highway BID Walkthrough

CB 15 District Outreach

2016

- CB18 Full Board Presentation
- Kings Highway BID Monthly Meeting Presentation
- NYCHA Breukelen Houses TA President Briefing
- Holy Family RC Church
- Starrett City TA President Briefing
- NYCHA Breukelen Houses TA Meeting
- Brooklyn Auditory Oral School Consultation
- Starrett City TA Meeting
- CB18 Leadership Meeting
- CM Williams Field Meeting
- New York Community Hospital Walkthrough
- St Matthew's Church Briefing
- Canarsie Full Gospel Briefing
- Christian Cultural Center Briefing
- Mt. Sinai Beth Israel Walkthrough
- Stakeholder meeting with Kings Hwy Beautification Association, Edith and Carl Marks Center
- Magen David Yeshiva Discussion

2017

- Library Outreach
 - Canarsie Branch
 - Highlawn Branch
 - Kings Highway Branch
 - Highlawn Branch #2
- Senior Centers Outreach
 - Vandalia Neighborhood
 - Abe Stark Center
 - Midwood Neighborhood Center
 - Ocean Parkway Neighborhood Center
- CB18 Leadership Meeting
- CM Williams Town Hall Meeting
- CB5, CB11, CB14, CB15, CB18
- United Canarsie South Civic Association
- Kings Hwy BID parking proposal discussion
- CM Deutsch site visit
- Edith and Carl Marks Center briefing & bus stop discussion

2018

- Kings Hwy Beautification Association site visit
- CB5, CB11, CB14

Community Engagement

- **What We Heard From You Last Time (May 2017):**
 - Interest in safety aspects of project
 - Questions about bus stops to be lengthened for SBS
 - Concern about changes to parking hours along Kings Hwy to accommodate bus lanes

B82 Safety Issues – CB 15

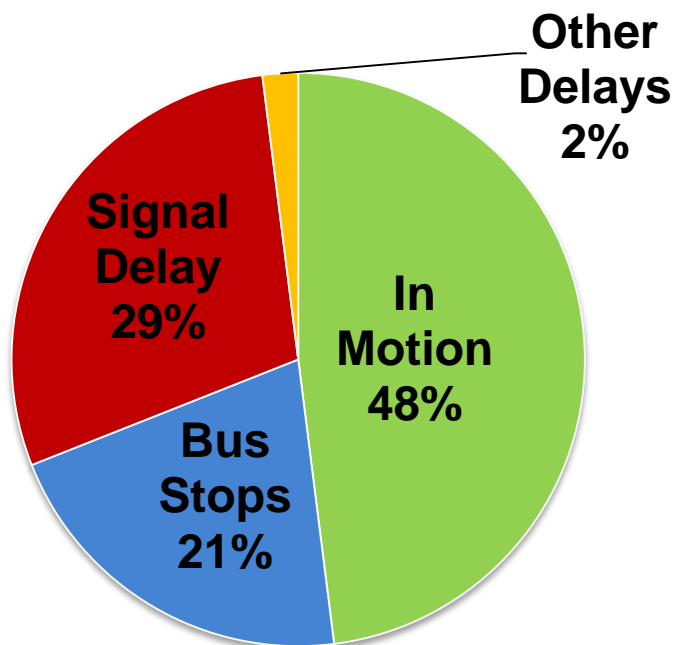


- Vision Zero is a multiagency effort to reduce traffic fatalities
- Improving safety is a goal of all DOT projects

Key Safety Issues Identified along the B82 Route in CB 15:

- Long pedestrian crossings and lack of pedestrian refuges to cross Kings Hwy
- Narrow median bus stops along Kings Hwy
- Limited visibility at some intersections

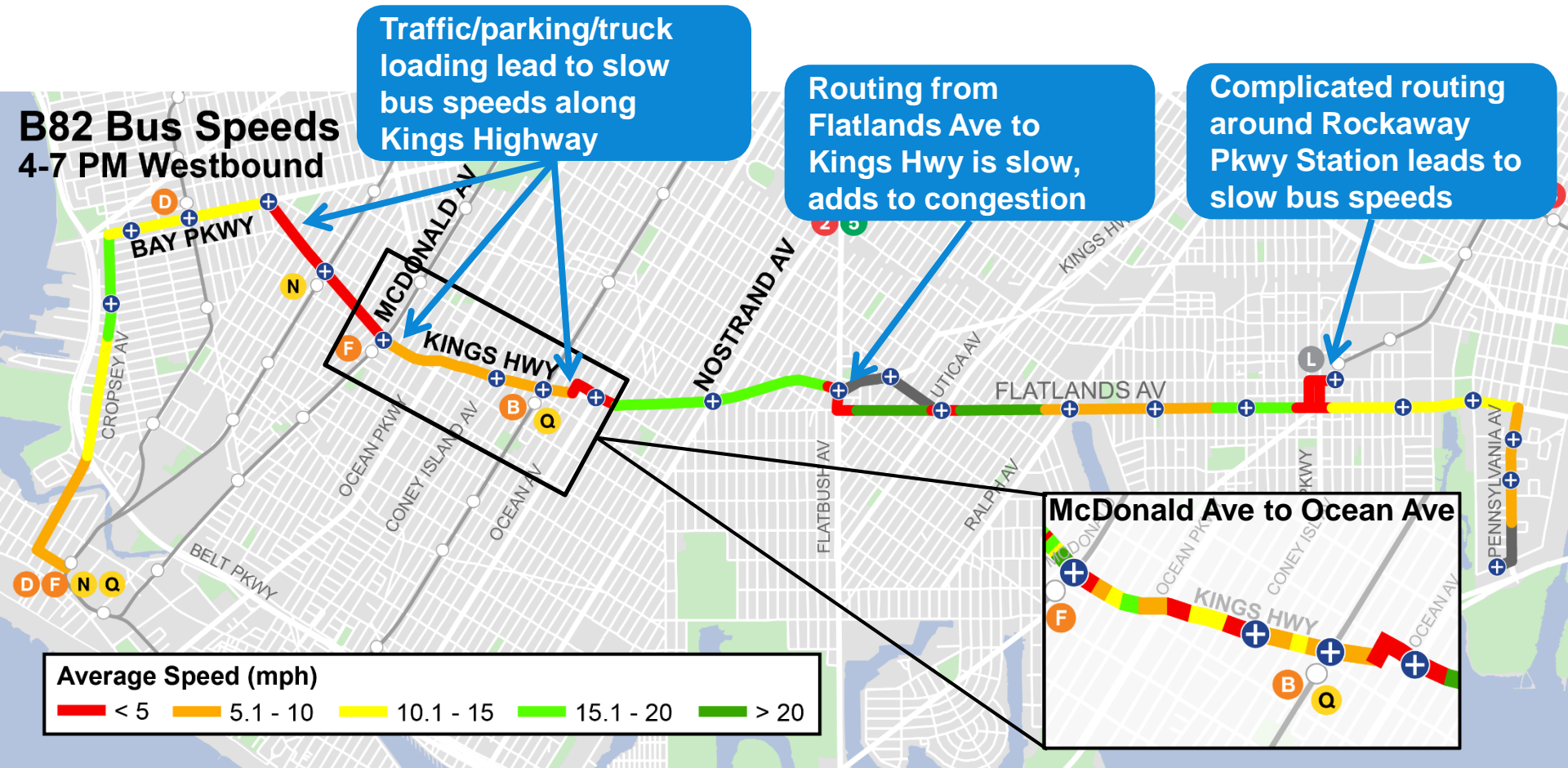
B82 Transit Issues – CB 15



- Buses are delayed by traffic, double parking, difficulty pulling in and out of bus stops
- Customers wait in long lines to pay on board the bus
- Some bus stops lack amenities (seating, shelters, countdown clocks, etc.)



Existing B82 Bus Speeds



Riding the B82



(Video)

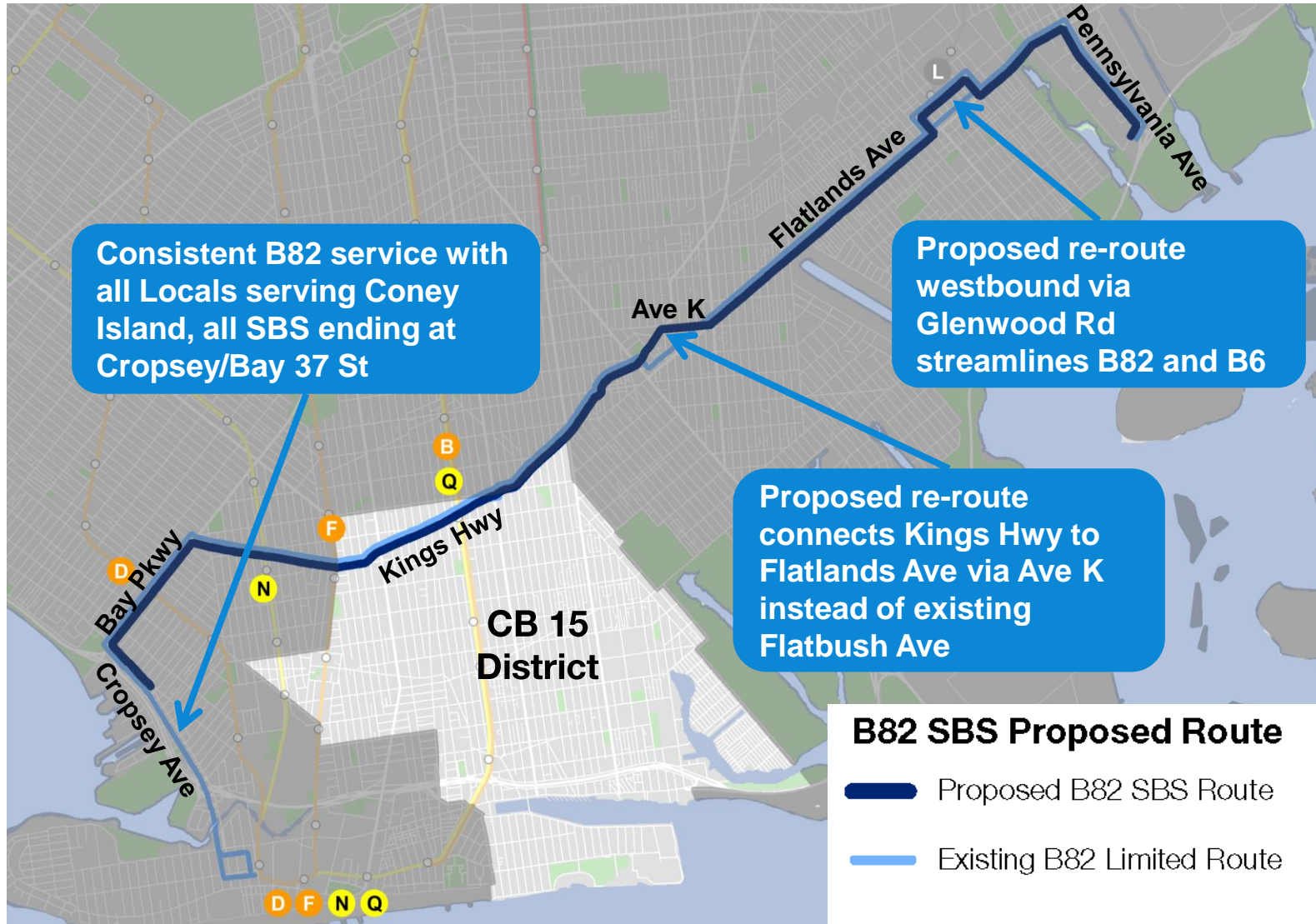
What is it like riding the B82?

B82 Limited is Becoming B82 SBS

- B82 SBS will begin at Cropsey Ave & Bay 37 St and serve the **same stops as the existing B82 Limited**
- B82 SBS will **operate for more hours of the day** than the B82 Limited (existing service does not operate mid-day or evenings)
- **All current stops will be served by the B82 Local**, except for three stops planned for removal (due to close proximity to nearby stops and no corresponding stop in opposite direction):
 - Kings Hwy at W 9 St, eastbound
 - Kings Hwy at Van Sicklen, eastbound
 - Kings Hwy at E 9 St, eastbound (CB 15)



B82 Route Changes



B82 SBS Stops

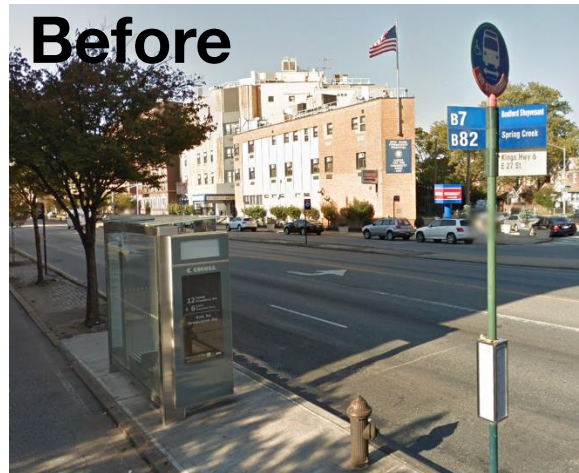
12,500 people in CB15 use the B82 Limited, B82 Local, or B7 service each day



B82 SBS Project Progress

2017 Transit & Safety Improvements

- Kings Hwy/E 27 St:
 - Reconstructed B82/B7 bus stop median on southwest corner to wider, ADA-accessible median



2017 Transit & Safety Improvements

- Kings Hwy/Nostrand Ave:
 - Reconstructed two B82/B7 bus stop medians to wider, ADA-accessible medians
 - Added larger shelter and began preparations for other amenities to be added in Spring 2018
- In 2017, the Mayor committed \$20 M to reconstruct Kings Hwy medians in CM Deutsch's district



B82 SBS 2018 Street Changes

Existing: Kings Highway (E 23 St to Ave K)

- Wide, boulevard style portion of Kings Highway
- Narrow, deteriorating medians serve as bus stops
- Large, complex intersections
- Major east-west transit corridor
 - Used by B82 Local, B82 Limited, B7 Local, school buses, coach buses, other buses
 - During AM and PM rush hours, buses come once per minute along Kings Hwy



Kings Hwy at Ave N, looking east



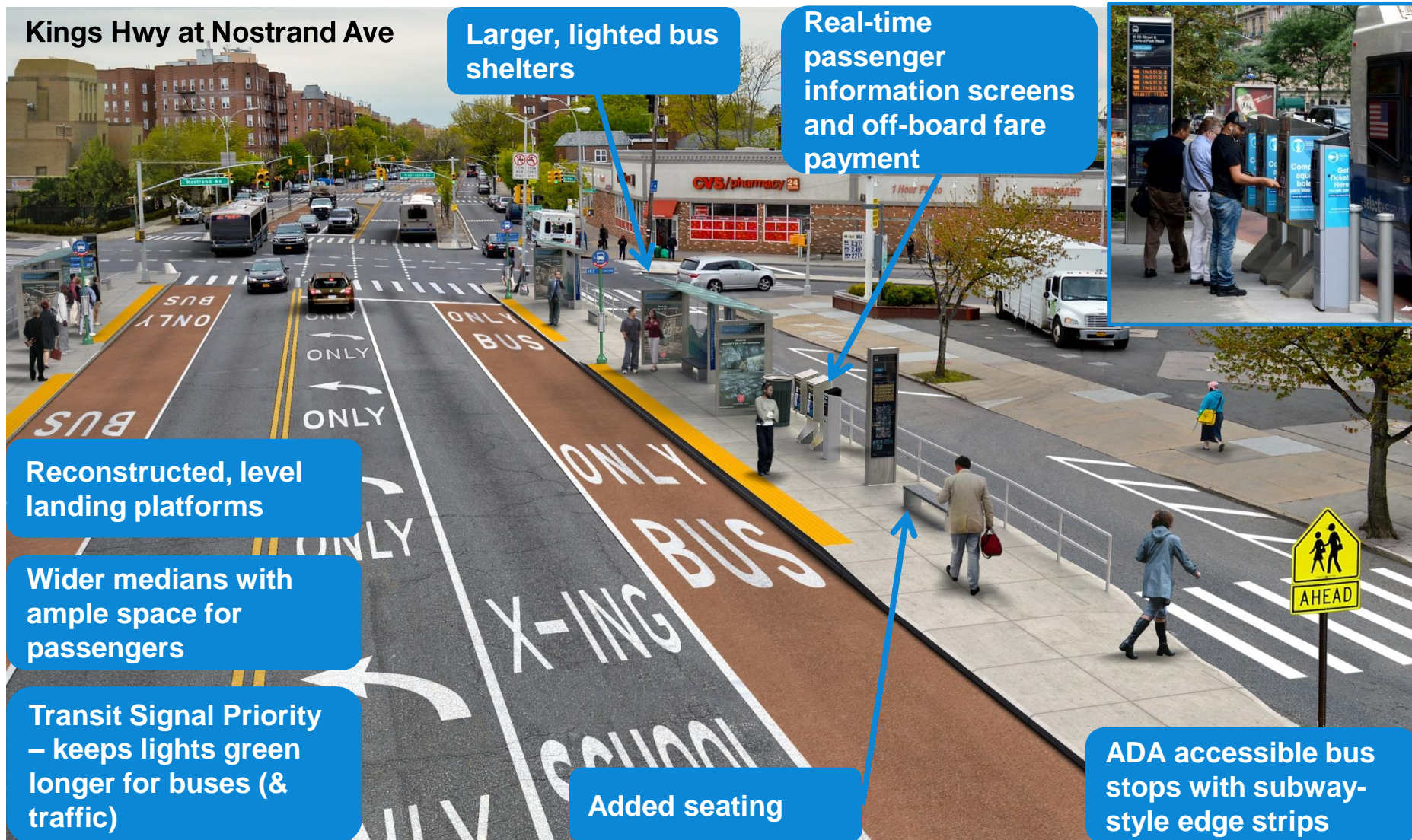
Kings Hwy at Ave K, looking northeast

Existing: Kings Highway (E 23 St to Ave K)

Kings Hwy at Nostrand Ave

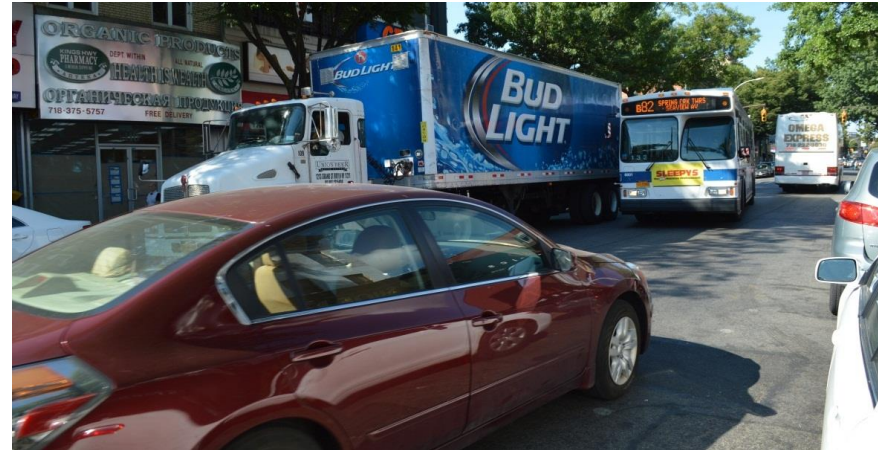


Planned: Kings Highway (E 23 St to Ave K)



Kings Highway (Bay Pkwy to Ocean Ave)

- Narrow roadway with one lane in each direction
- Important east-west transit corridor
 - Used by B82 Local, B82 Limited, B7 Local, other non-MTA buses
 - 3 subway stations (B/Q, F, N)
 - During AM and PM rush hours, buses come every 1-2 minutes along Kings Hwy
- Local truck route
- Issues with double parking blocking the street, buses unable to pull into bus stops, frequent truck loading



Narrow lanes & truck loading



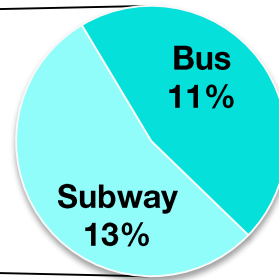
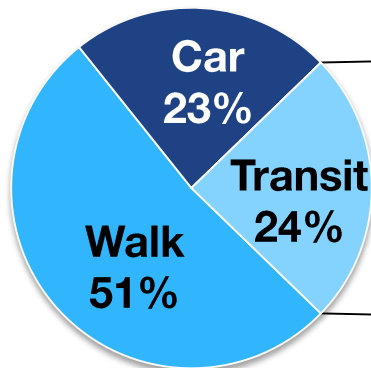
Trucks blocking bus stops

Kings Highway Shoppers Survey

- Face-to-face interviews with 7,500 people on Kings Highway between W 10th St and Ocean Ave

How People Get to Kings Highway

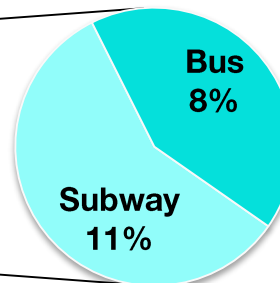
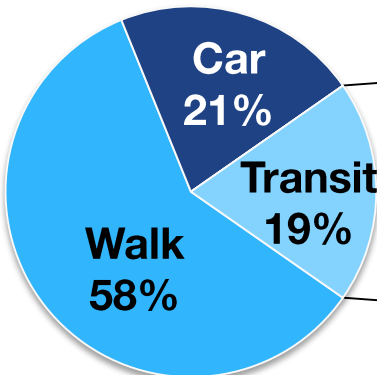
Weekday



Primary Purpose of Trip

1. Shopping (grocery, drug/discount store, clothing/shoes)
2. Work
3. Dining/restaurant
4. Medical

Weekend



1. Shopping (grocery, drug/discount store, clothing/shoes)
2. Dining/restaurant
3. Work
4. Personal errand

Kings Highway Business Survey

- Interviews with 235 businesses along Kings Highway
- Questions on delivery and loading needs

What delivery/loading problems do you deal with?

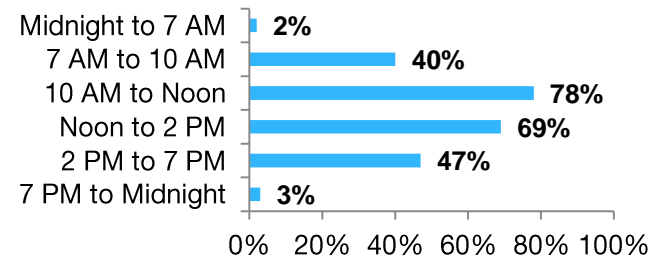
67%

of businesses report double parking interferes with deliveries

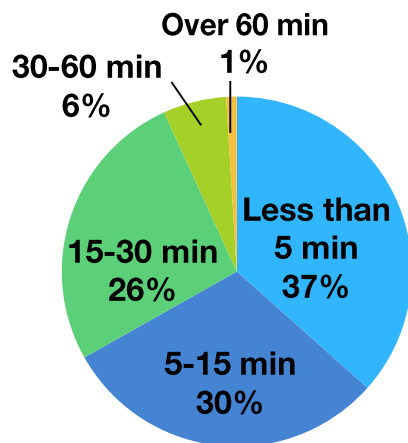
46%

of businesses report vehicles at curb interfere with deliveries

At what times does your business typically receive deliveries?



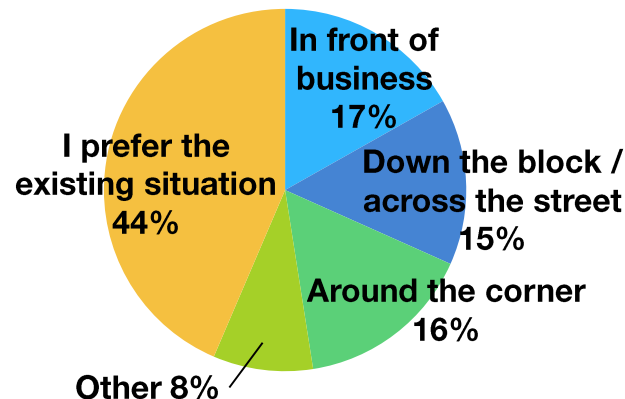
How long do deliveries typically take?



2/3

of deliveries take 15 minutes or less

What type of delivery zone would be most helpful for your business?



48%

of businesses would find a delivery zone helpful

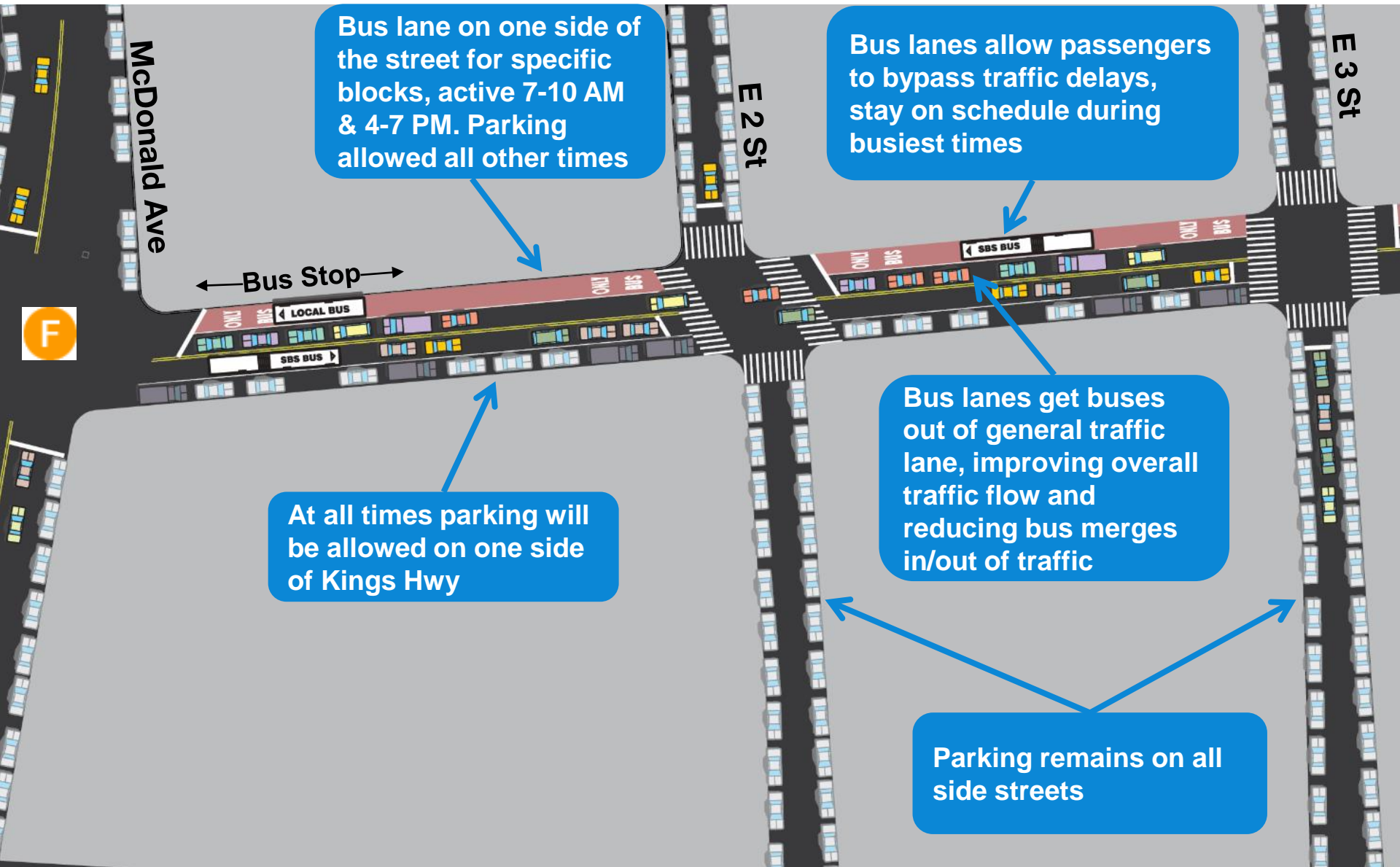
Study Takeaways

- Large majority of people (**75-80%**) coming to Kings Highway arrive without a car, either on foot or by transit
- Kings Highway is often blocked by standing/double parked trucks and cars
- Businesses need to receive deliveries most frequently 10 AM – 2 PM, some have trouble accessing the curb
 - About 1/2 of businesses would find nearby delivery zone useful
- **As the area continues to grow and develop, there is a need to move more people in the same amount of street space**

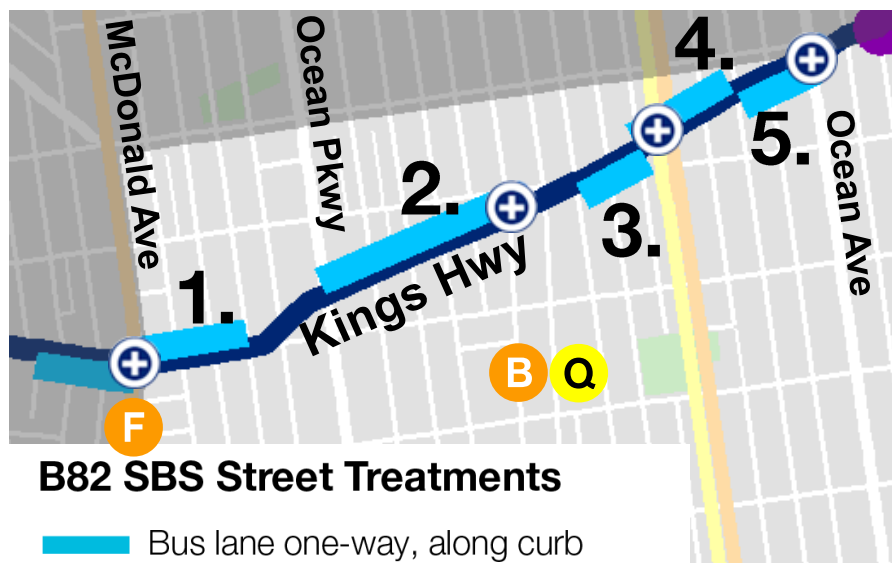
A Look at Street Space...



Kings Hwy: 2018 Transit Improvements



Kings Hwy: 2018 Transit Improvements



Bus Lane Segments in CB 15:

1. McDonald Ave to E 4 St (westbound)
2. Ocean Pkwy to Cl Ave (westbound)
3. E 13 St to E 15 St (eastbound)
4. E 16 St to E 18 St (westbound)
5. E 18 St to Ocean Ave (eastbound)

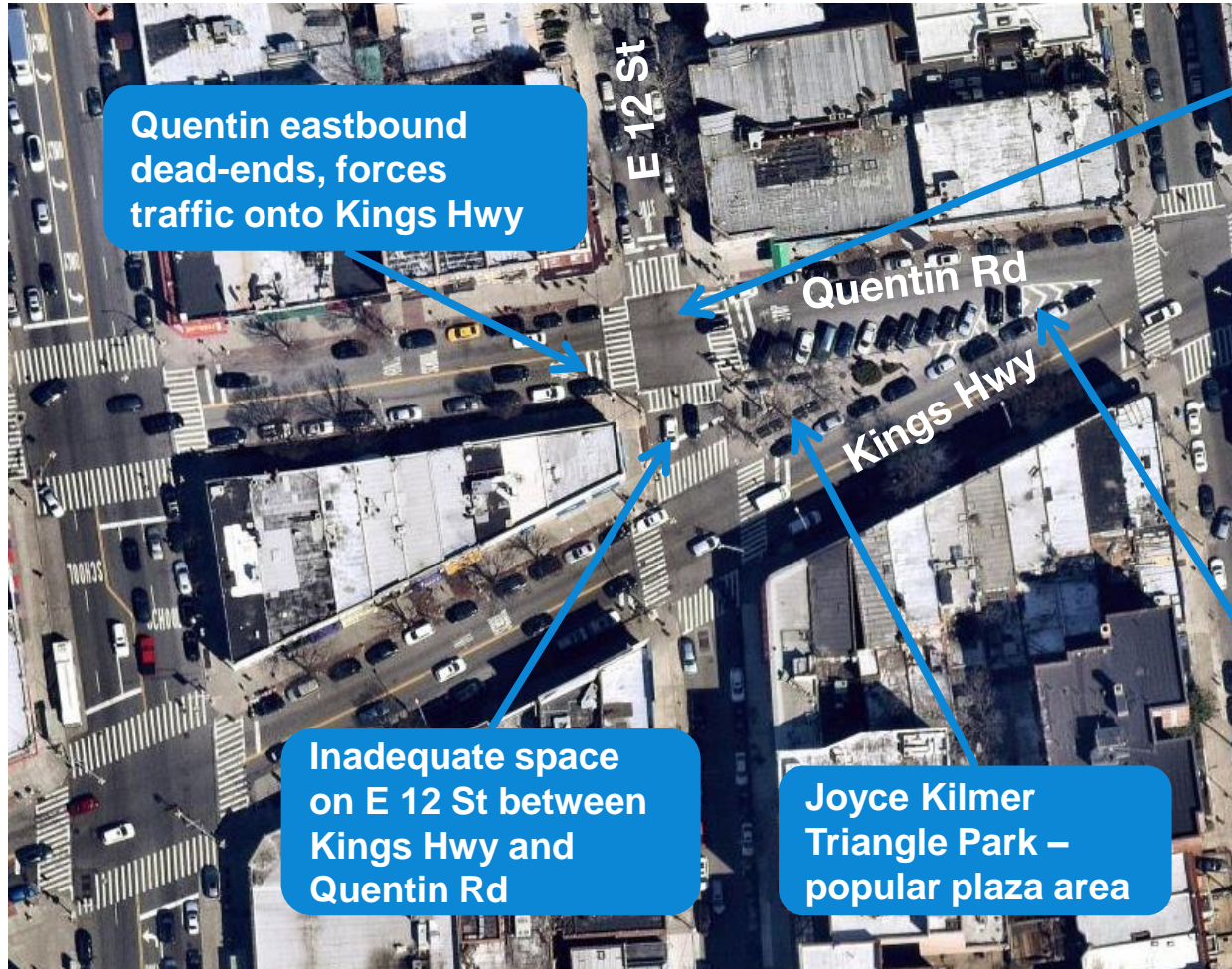
Note: Bus lanes serve all buses, emergency vehicles, and right turns



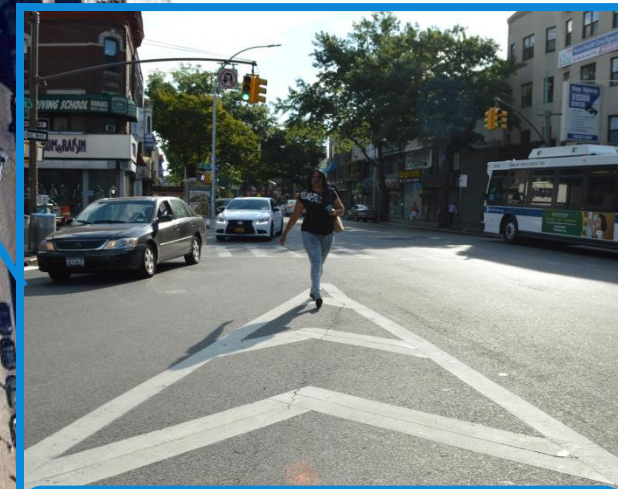
Bus lanes in effect 7-10 AM
& 4-7 PM Mon-Fri to **help**
move the most people at
the busiest times

**Parking is allowed in bus
lanes at all other times**

Existing: Kings Highway at E 12 St

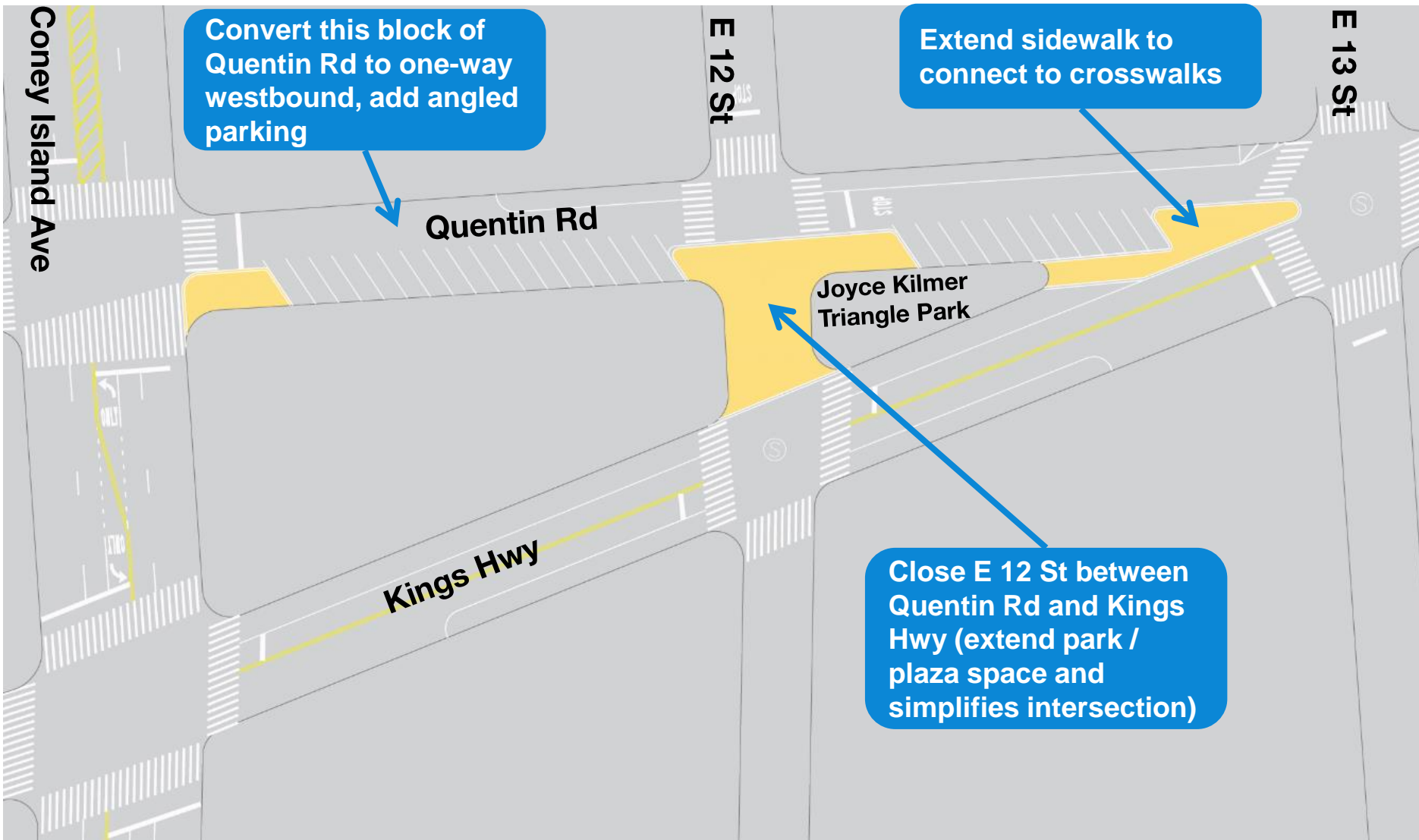


Traffic blocks intersection on E 12 St at Quentin Rd

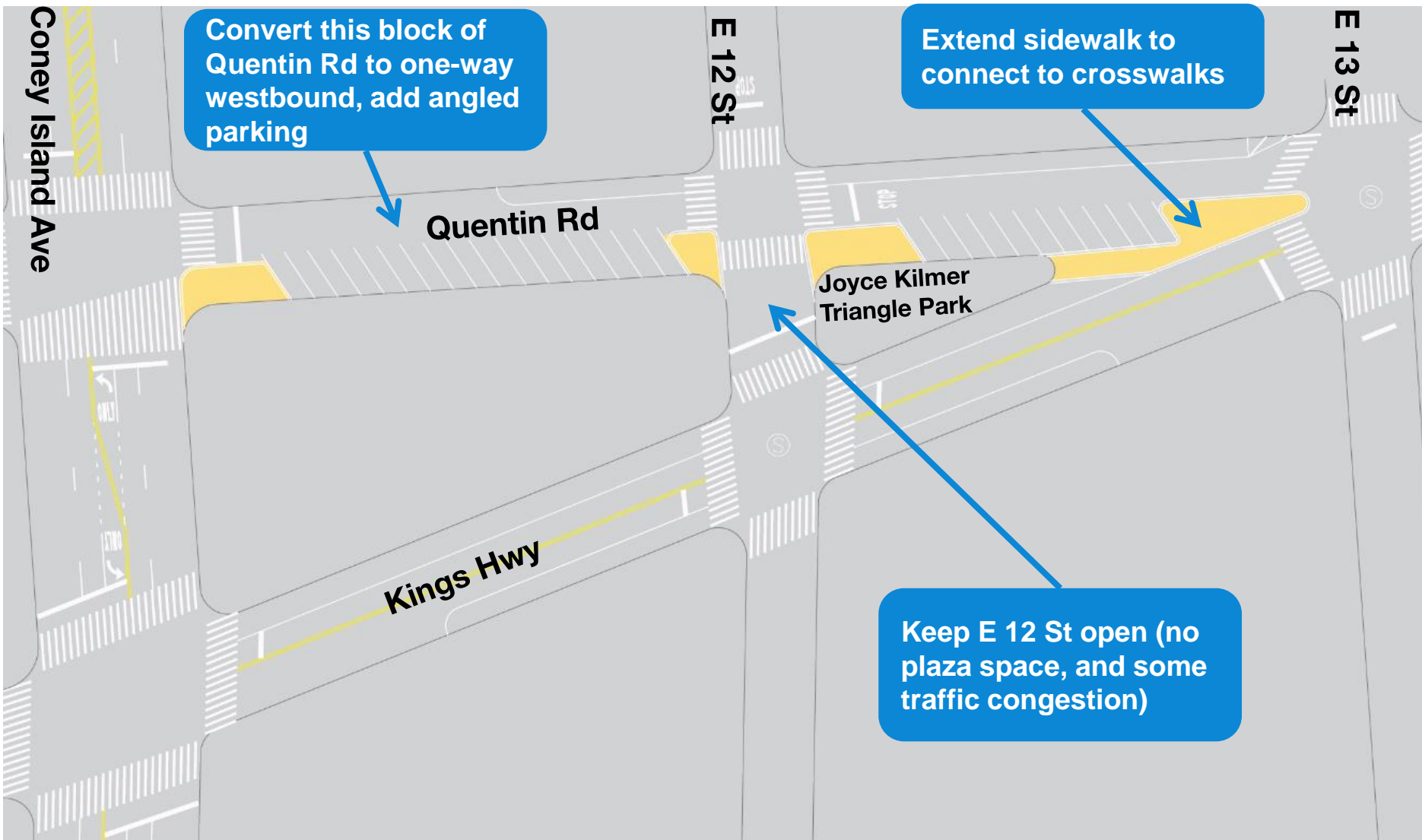


Sidewalk dead-ends, forces pedestrians into street

Option 1: Kings Highway at E 12 St



Option 2: Kings Highway at E 12 St



Other Updates to Add Parking

In response to discussions with CM Deutsch, the Kings Hwy BID, and Sam Schwartz (consultant for Kings Hwy BID), NYCDOT has sought out additional opportunities to add parking around the Kings Highway corridor:

- Removal of B82 eastbound bus stop on Kings Hwy at E 9 St to be replaced with parking
 - Bus stop is in close proximity to previous stop and has low ridership
- Addition of angled parking along E 17 St between Kings Hwy and Ave P
 - This block is wider than adjacent blocks, allowing for conversion of parallel parking on one side of street to angled parking
- Extension of parallel parking at Kings Hwy & Ocean Ave (adjacent to Corporal Wiltshire Square)

Kings Highway: 2018 Curbside Changes

Kings Hwy curbside changes in CB 15 to improve bus service and accommodate parking & loading:

	<u># of Parking Spaces</u>
• <u>Part-time</u> spaces used for bus lanes: <ul style="list-style-type: none">• 7-10 AM, 4-7 PM Mon-Fri	-108
• <u>Full-time</u> spaces removed: (bus stop lengthening at 2 stops)	-4
• <u>New full-time</u> spaces created: (Bus stop removal, new angled/parallel parking)	+21

Part-time parking changes for bus lanes only apply for 25% of the day on weekdays. For 75% of the day on weekdays and full-time on weekends, there will be more parking available than there is currently.

Next Steps

Winter 2018 – Ongoing Now

- Present final plan to community boards and elected officials
- Continue stakeholder outreach
- Construction at B82 SBS stops to provide power for fare machines, lighted bus shelters, wayfinding totems with countdown clocks

Spring – Summer 2018

- Implement project street designs and SBS stop amenities
- July 2018: Launch B82 Southern Brooklyn Select Bus Service

Thank You!

- Questions?
- We appreciate your input! You can provide it at your convenience online:
 - www.nyc.gov/brt or
 - nycdotfeedbackportals.nyc/south-brooklyn-sbs
- To invite us to community events or give other feedback, please email us at **brt@dot.nyc.gov**

Questions and Discussion

