

B46 Select Bus Service

Community Board 17 Public Hearing | April 4, 2016



Agenda

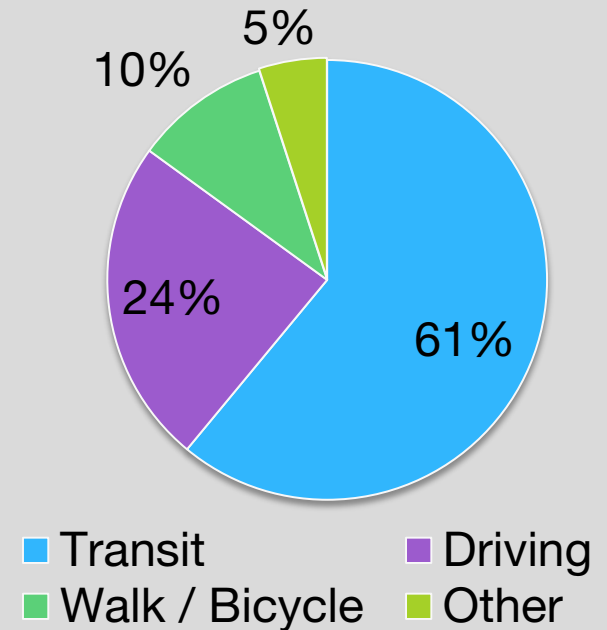
1. Background and overview of B46 Utica Avenue Select Bus Service
2. Implemented improvements and SBS launch details
3. Long-term improvements and adjustments
4. Questions and comments

Project Background

The Utica Avenue B46 corridor was identified as a potential candidate for Select Bus Service in the 2009 Bus Rapid Transit Phase II Study.

- Characterized by slow and crowded trips
- Busiest bus route in Brooklyn, carrying nearly 46,000 passengers per day
- Crucial connection to **3** **4** **A** **C** trains and 30 bus routes
- Vision Zero Priority Corridor
 - 7 pedestrians killed and 57 pedestrians severely injured (2009-2013)

Residents' Mode to Work



Source: 2008-2012 ACS 5-Year Estimates
¼ mile from B46 corridor

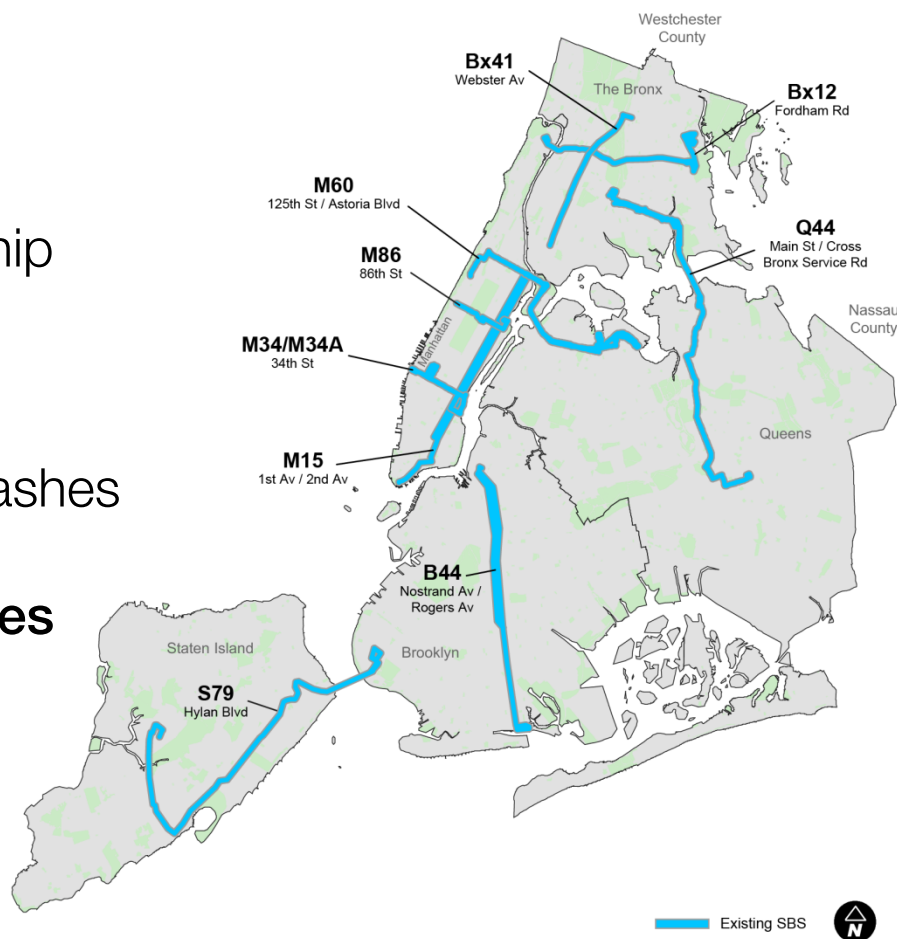
Select Bus Service in New York City

Select Bus Service (SBS) is New York City's brand name for Bus Rapid Transit: an improved bus service that offers fast, frequent, and reliable service on high-ridership bus routes.

SBS has brought:

- 15-23% faster bus speeds
- About 10% increase in ridership
- More reliable service
- Customer satisfaction of 95%
- Safer streets / reduction in crashes

There are 9 Select Bus Service routes serving all 5 boroughs.



Select Bus Service Features



Improved fare collection



Bus lanes



Transit signal priority



Passenger information



Improved station amenities



Pedestrian safety improvements

Utica Avenue Outreach

Outreach for the 2014 Bus Improvement Project (2013-2014)

- Meetings with Community Boards, local businesses, and elected officials

Outreach for Select Bus Service

- Community Advisory Committee Meeting #1 (September 2014)
- Public Workshop #1 (November 2014)
- Community Advisory Committee Meeting #2 (February 2015)
- Open House (March 2015)
- Community Board Meetings along B46 corridor (March-April 2015)
- Community Board Meetings for capital improvements (February 2016)



Implemented Improvements

Summer 2014

Utica Ave: St. Johns Place to Church Avenue

- Added bus lanes, left-turn bays, and turn restrictions
- B46 Limited and local travel times decreased 8% to 15%*
- Vehicle travel times decreased 20% to 25% in peak direction*

Summer 2015

Utica Ave: Church Avenue to Fillmore Avenue

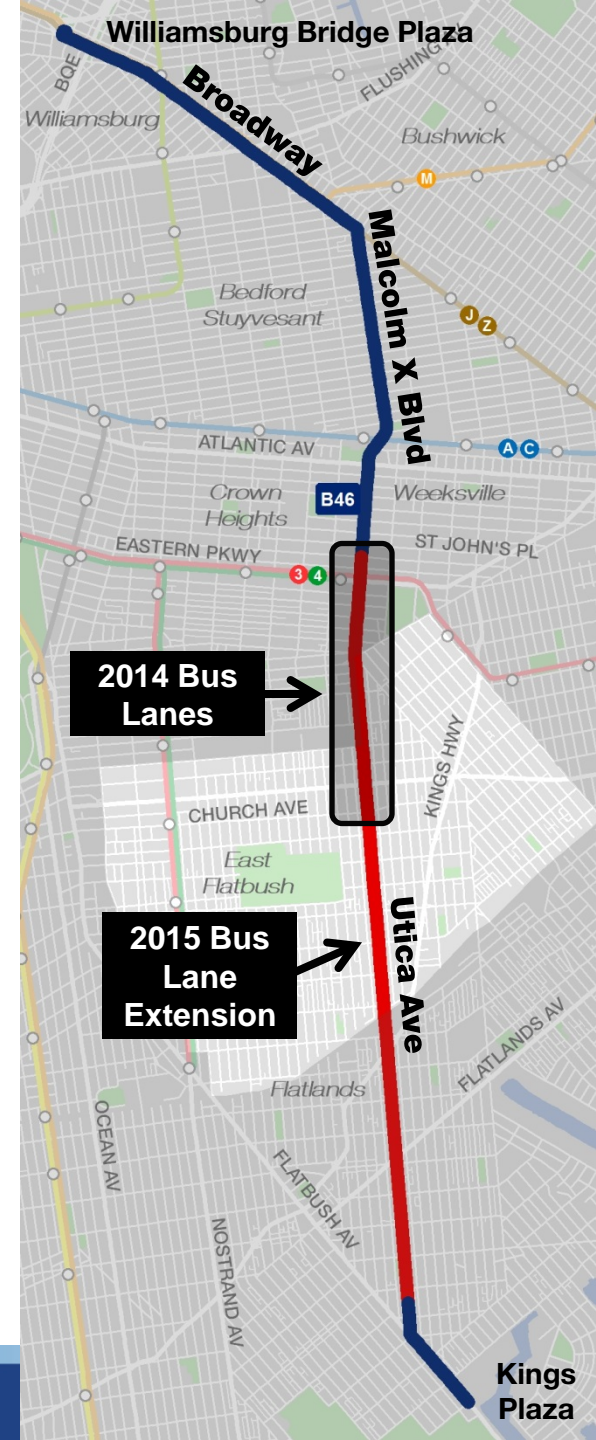
- Added bus lanes, left-turn bays, turn restrictions, pedestrian islands
- Added truck loading zones, update curb regulations

Fall 2015

Malcolm X Blvd & Broadway to Utica Ave & Kings Hwy

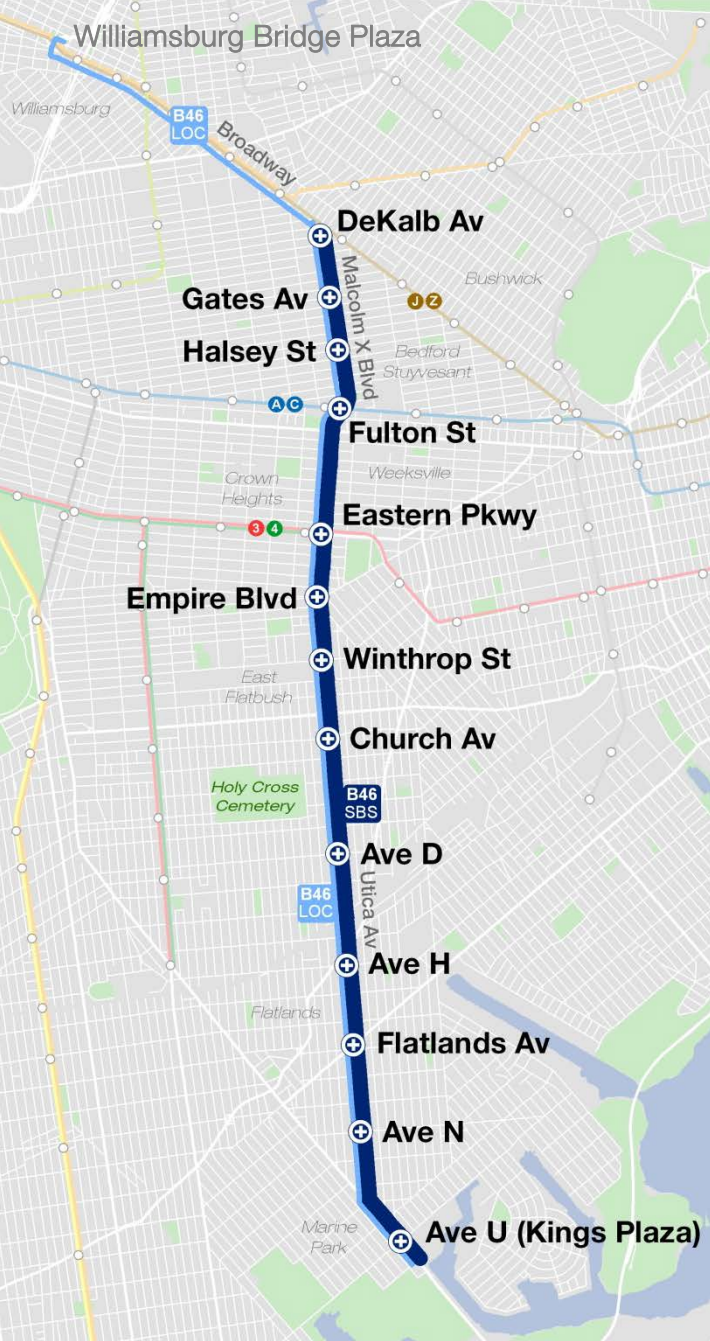
- Implemented transit signal priority

*AM and PM peak



B46 Select Bus Service Route

- B46 SBS will run between Avenue U (Kings Plaza) and DeKalb Avenue
- B46 Local will run between Avenue U (Kings Plaza) and Williamsburg Bridge Plaza



B46 SBS Within Community Board 17



2016 Select Bus Service Improvements

- Resurfacing Utica Avenue from Clarkson Avenue to Kings Highway
- Adjusting bus stops for SBS service
- Installing fare machines
- Installing Bus Time wayfinding signs
- Installing new shelters and benches where feasible

**SBS Service
Launches Late Spring 2016**



*Fare Machines and Bus Time Wayfinding Sign
86th Street & Central Park West, Manhattan*

Select Bus Service Capital Improvements

Long-Term (2017-2018)

- Construct bus bulbs at SBS stops south of Empire Boulevard
- Add neckdowns and pedestrian islands



*Neckdown Example
Queens Boulevard & 62nd Drive, Queens*



*Bus Bulb Example
34th Street & Eighth Avenue, Manhattan*

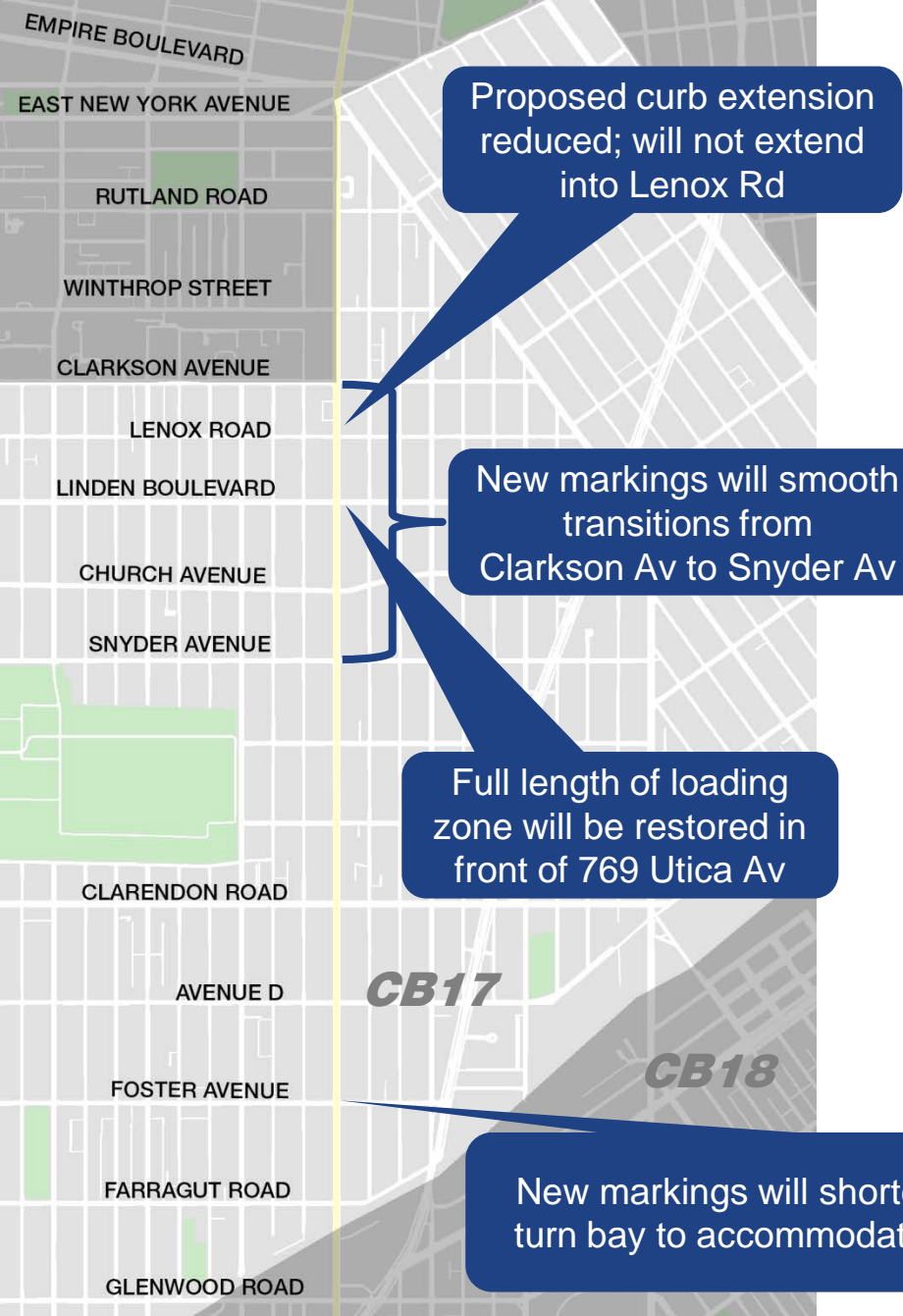
Utica Avenue Bus Bulb Locations



- 5 bus bulbs in CB17
- 11 bus bulbs along full corridor

Adjustments Based on Feedback

- Bus lane hours reduced from 24-hours to 7am-7pm only
- Left-turn restrictions reduced from 24-hours to 7am-7pm only



Next Steps

SBS Launch

- Fare machine installation is ongoing
- Markings restoration after paving is complete
- SBS Launch in late spring

Capital Improvements

- 2016: preliminary and final design
- 2017-2018: construction

Questions?



New York City Transit

+selectbusservice



Appendix Slides

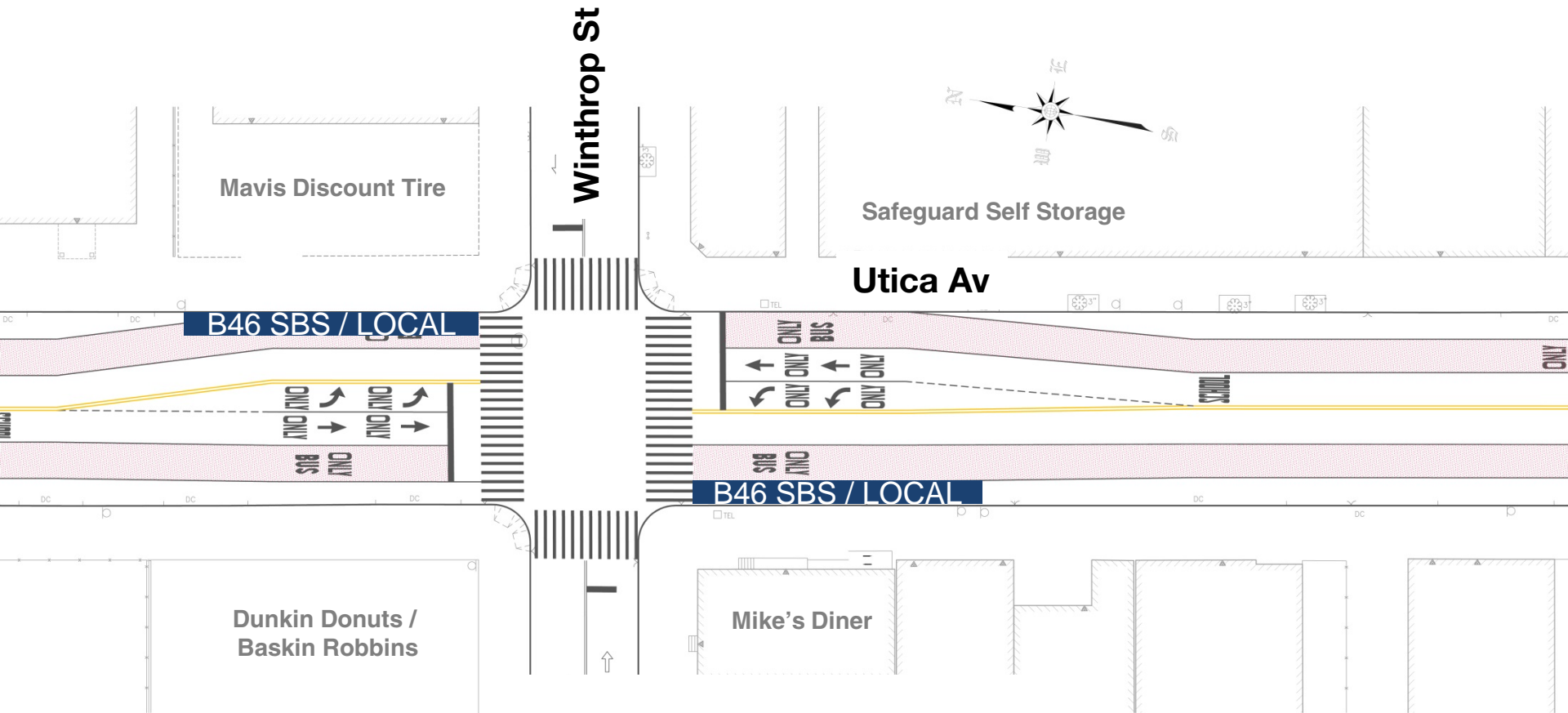
Community Board 17

SBS Stops

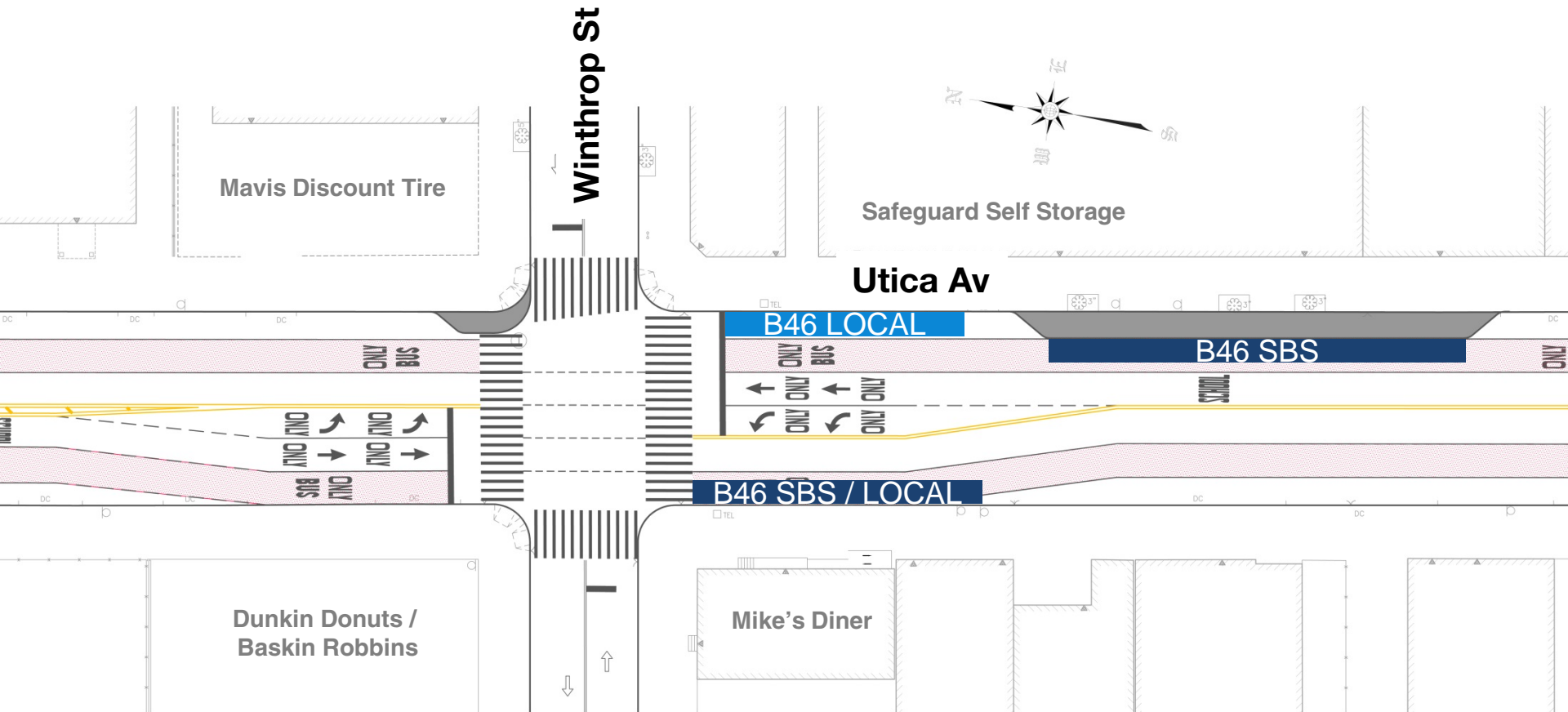
Utica Avenue and Winthrop Street



Utica Avenue and Winthrop Street 2016 Plan



Utica Avenue and Winthrop Street Capital Plan

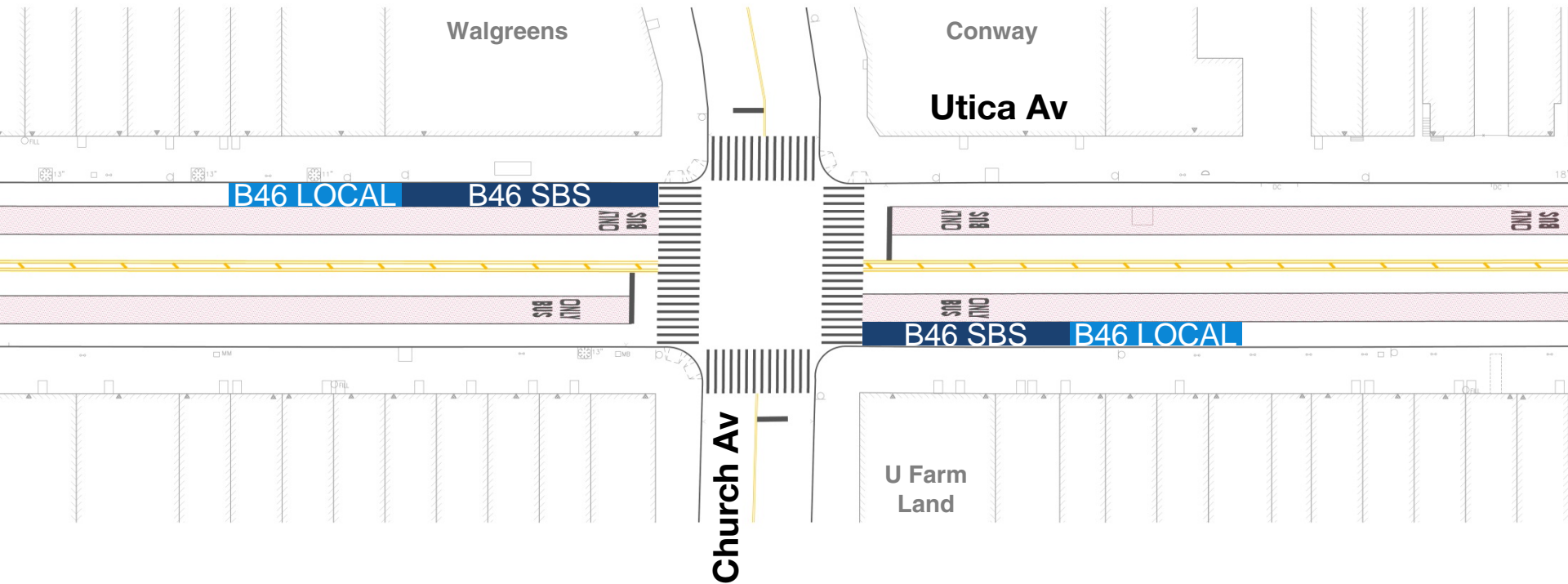


Utica Avenue and Church Avenue

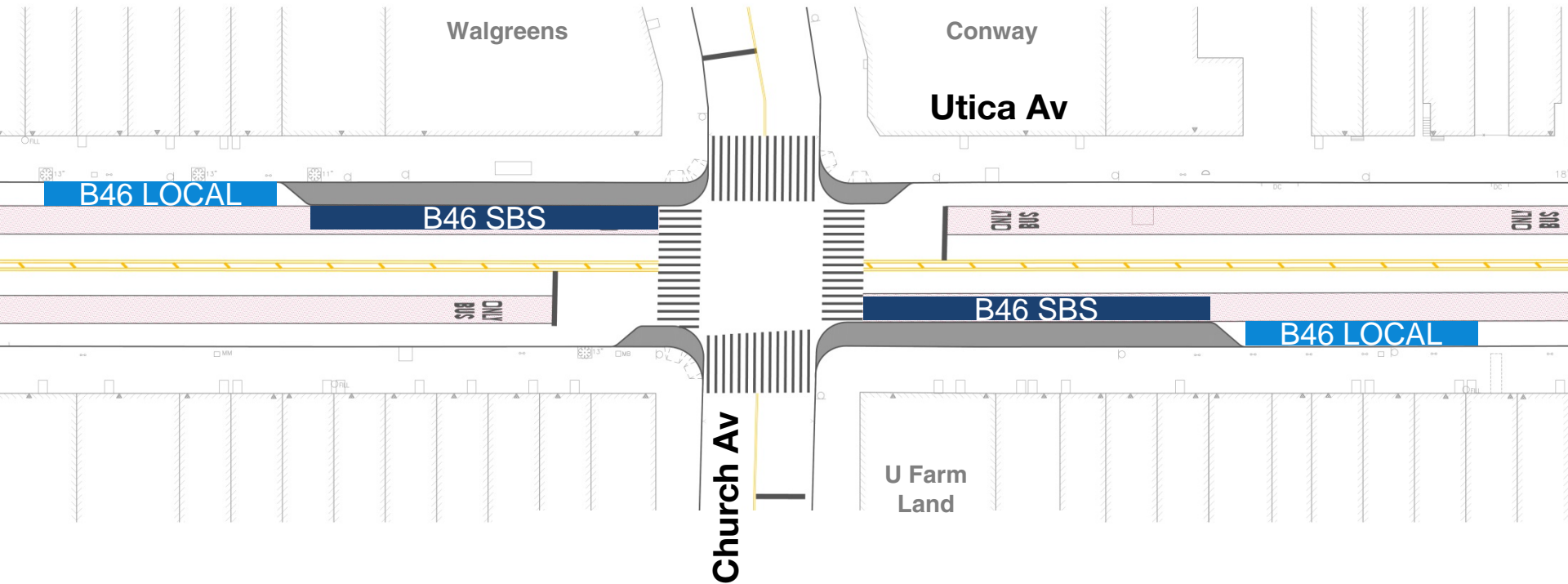


Utica Avenue and Church Avenue

2016 Plan



Utica Avenue and Church Avenue Capital Plan

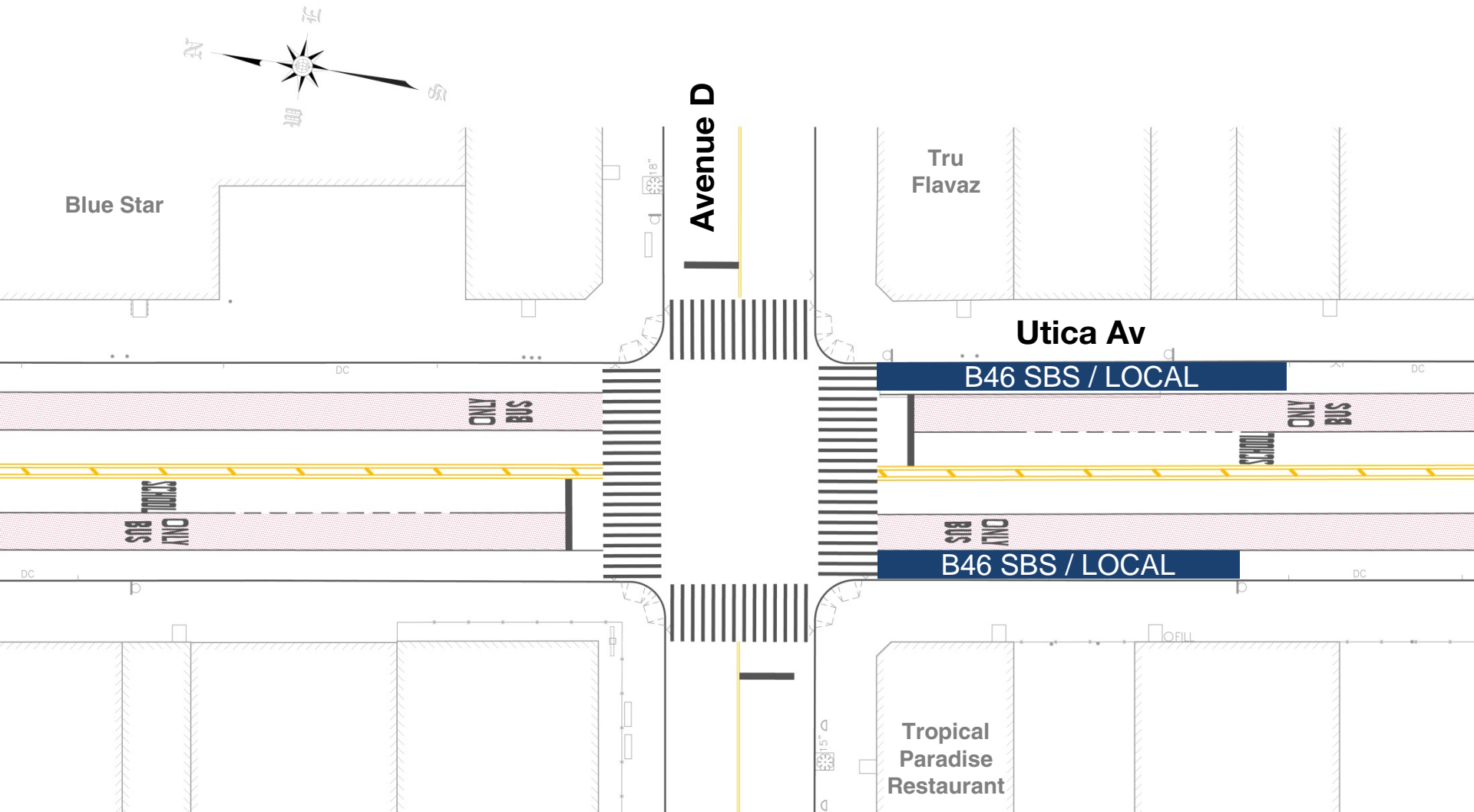


Utica Avenue and Avenue D

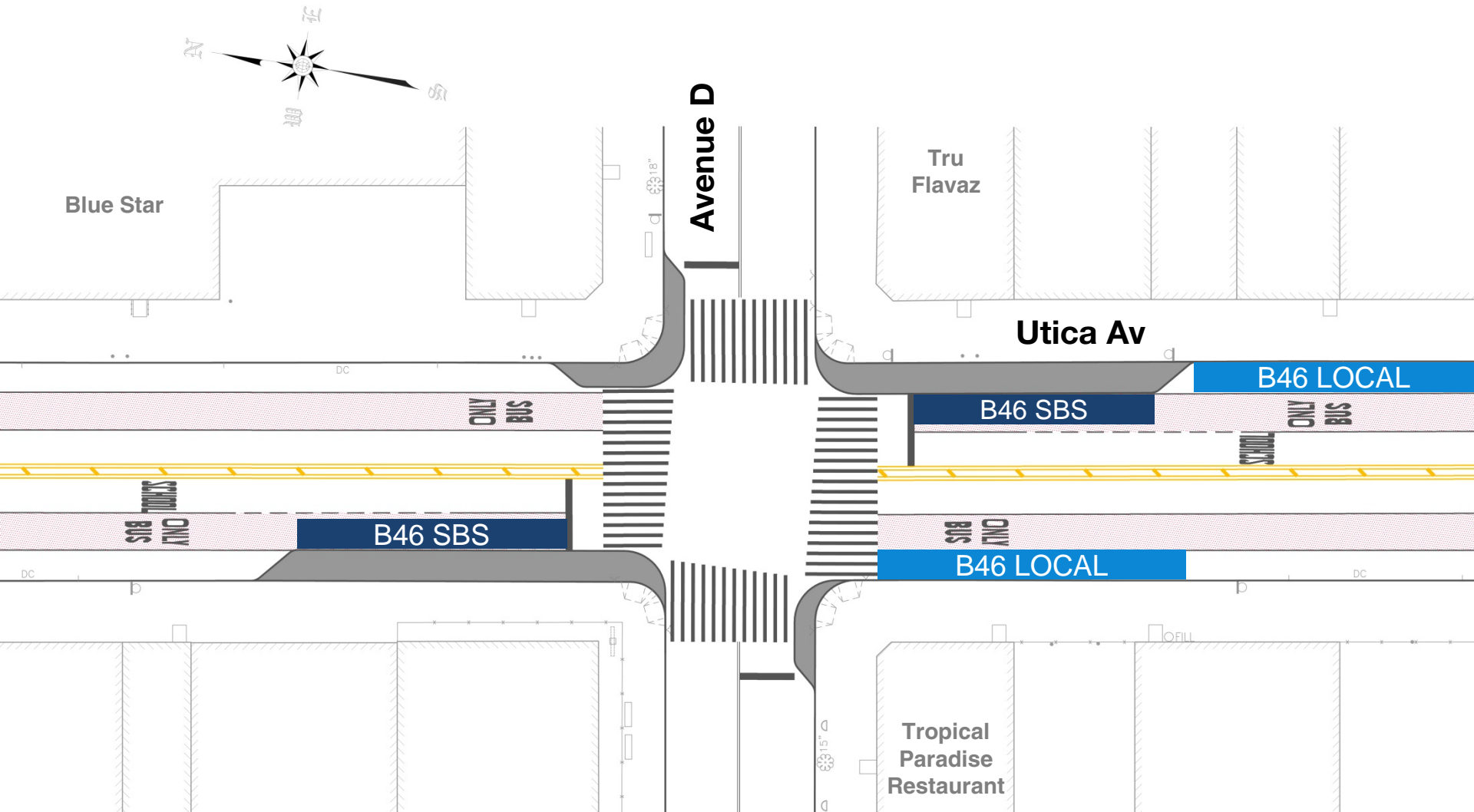


Utica Avenue and Avenue D

2016 Plan

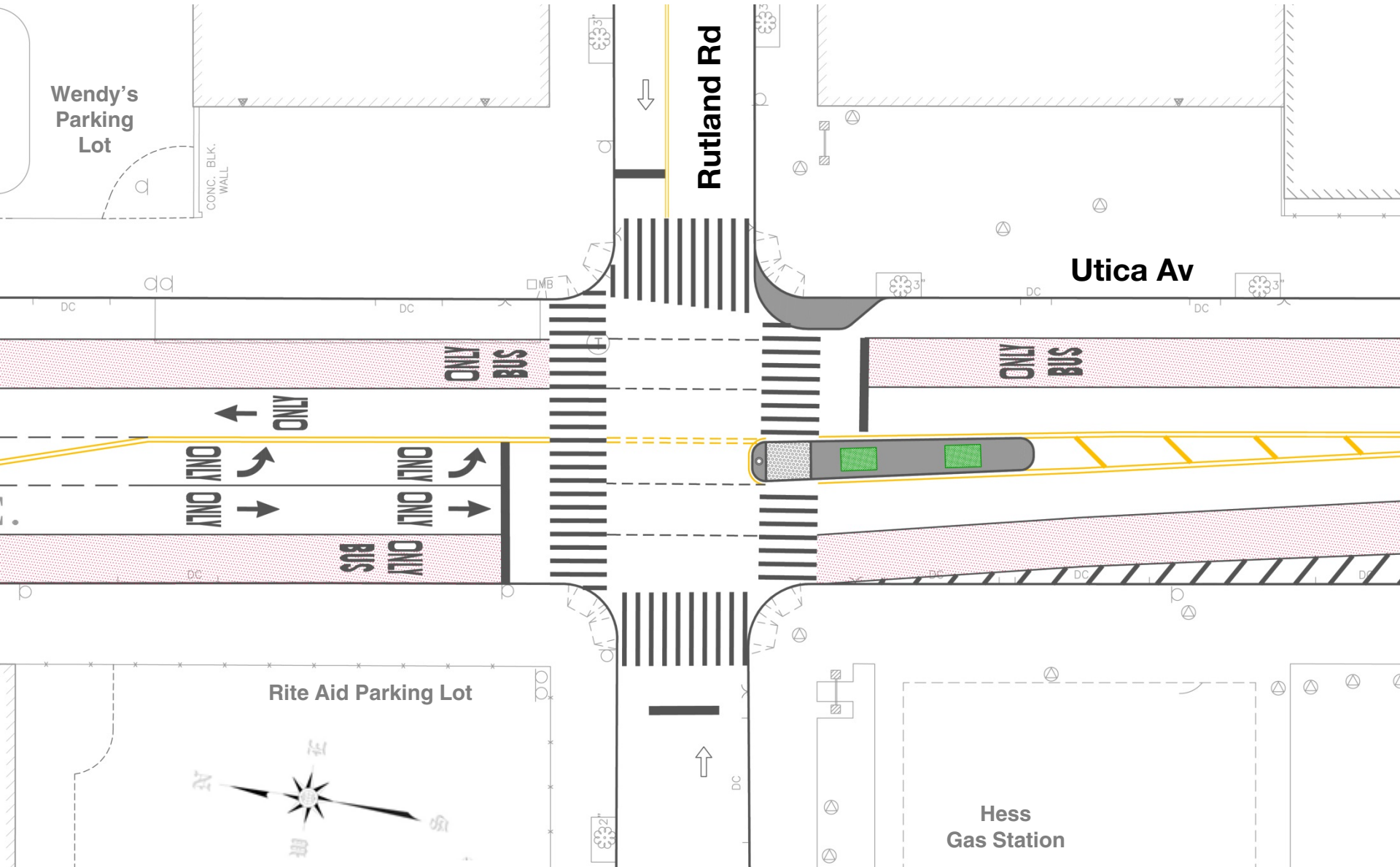


Utica Avenue and Avenue D Capital Plan

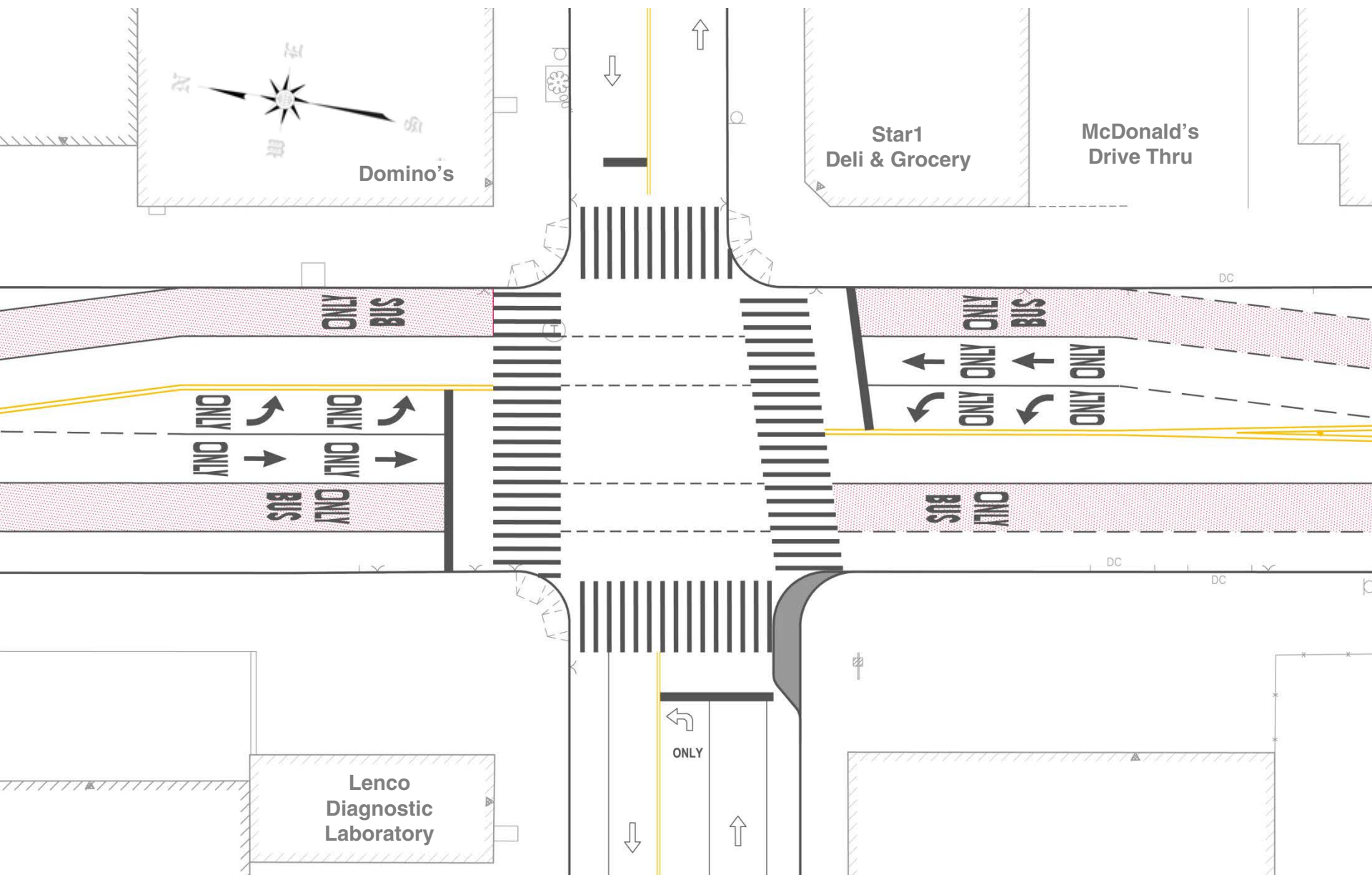


Community Board 17 Pedestrian Safety Capital Improvements

Utica Avenue and Rutland Road

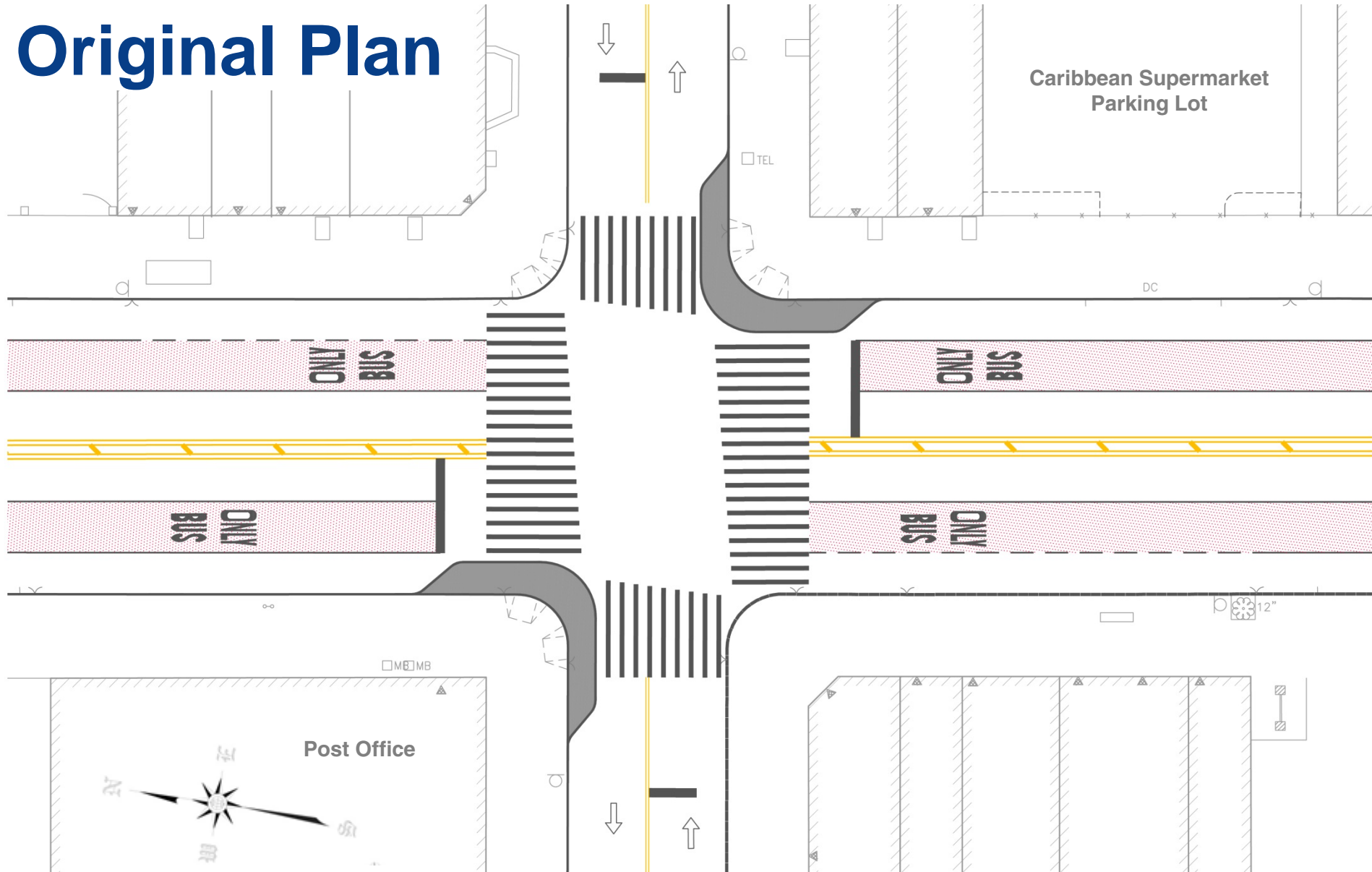


Utica Avenue and Clarkson Avenue



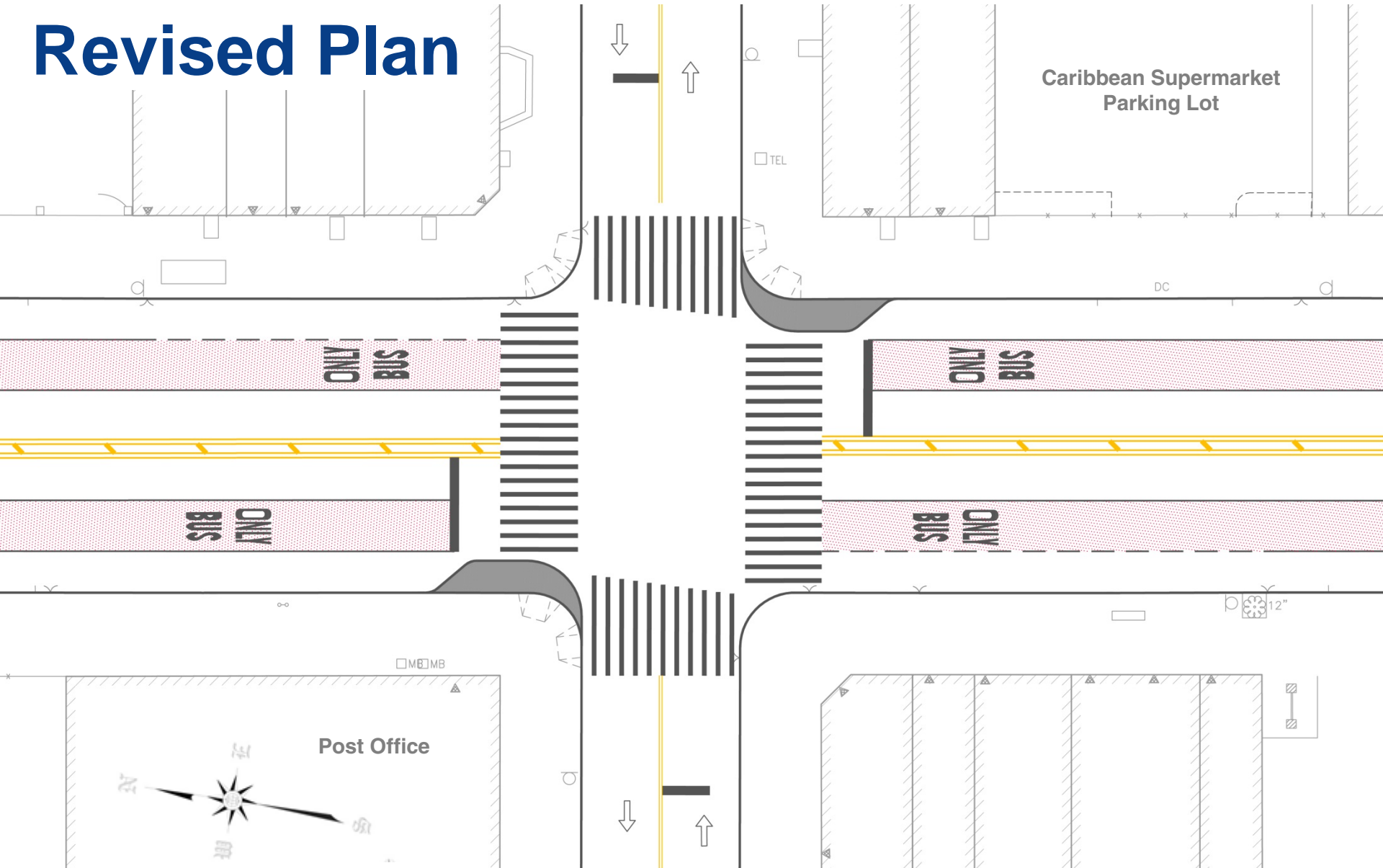
Utica Avenue and Lenox Road

Original Plan



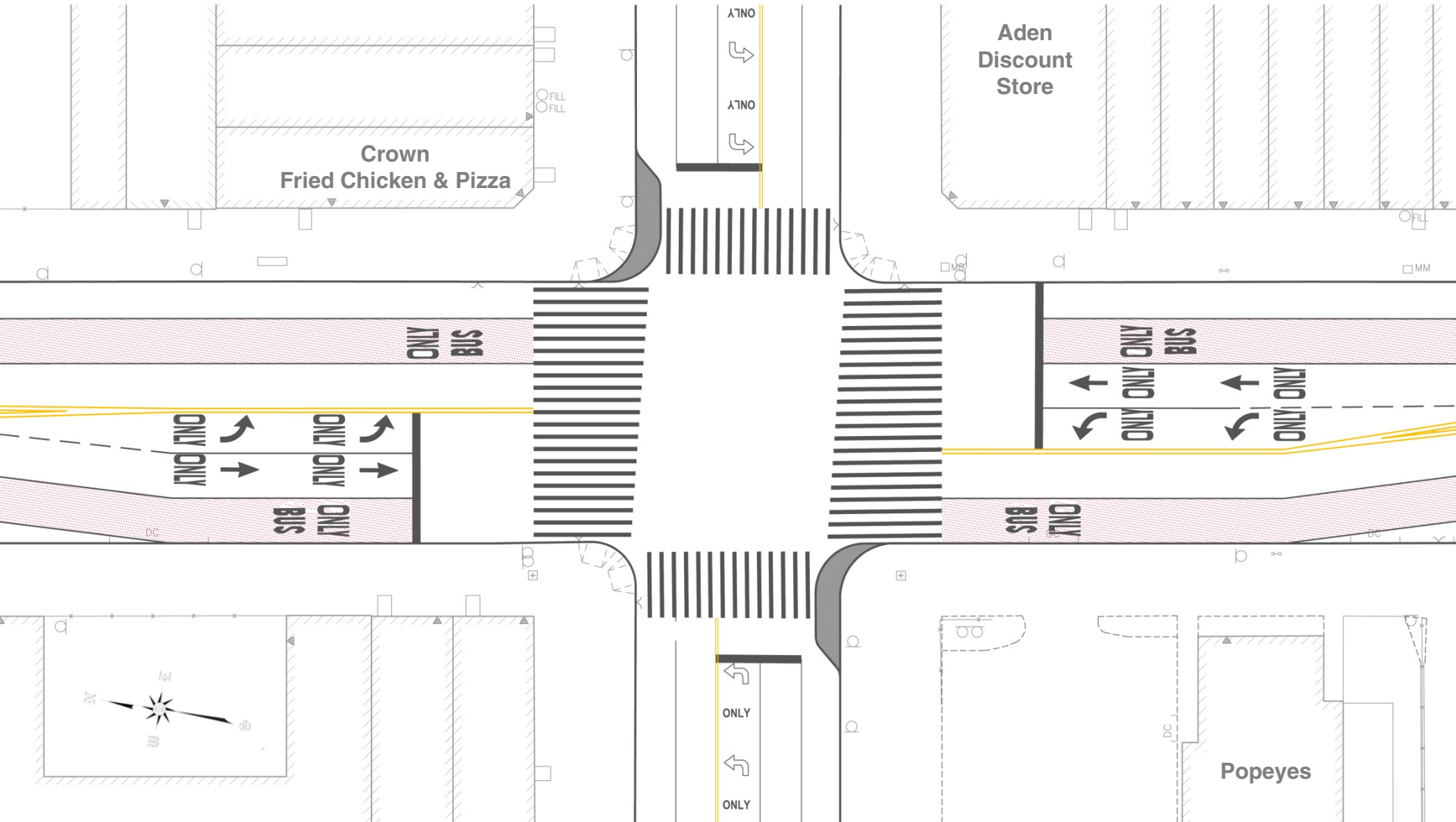
Utica Avenue and Lenox Road

Revised Plan



Utica Avenue and Linden Boulevard

Capital Plan



Safety Concerns

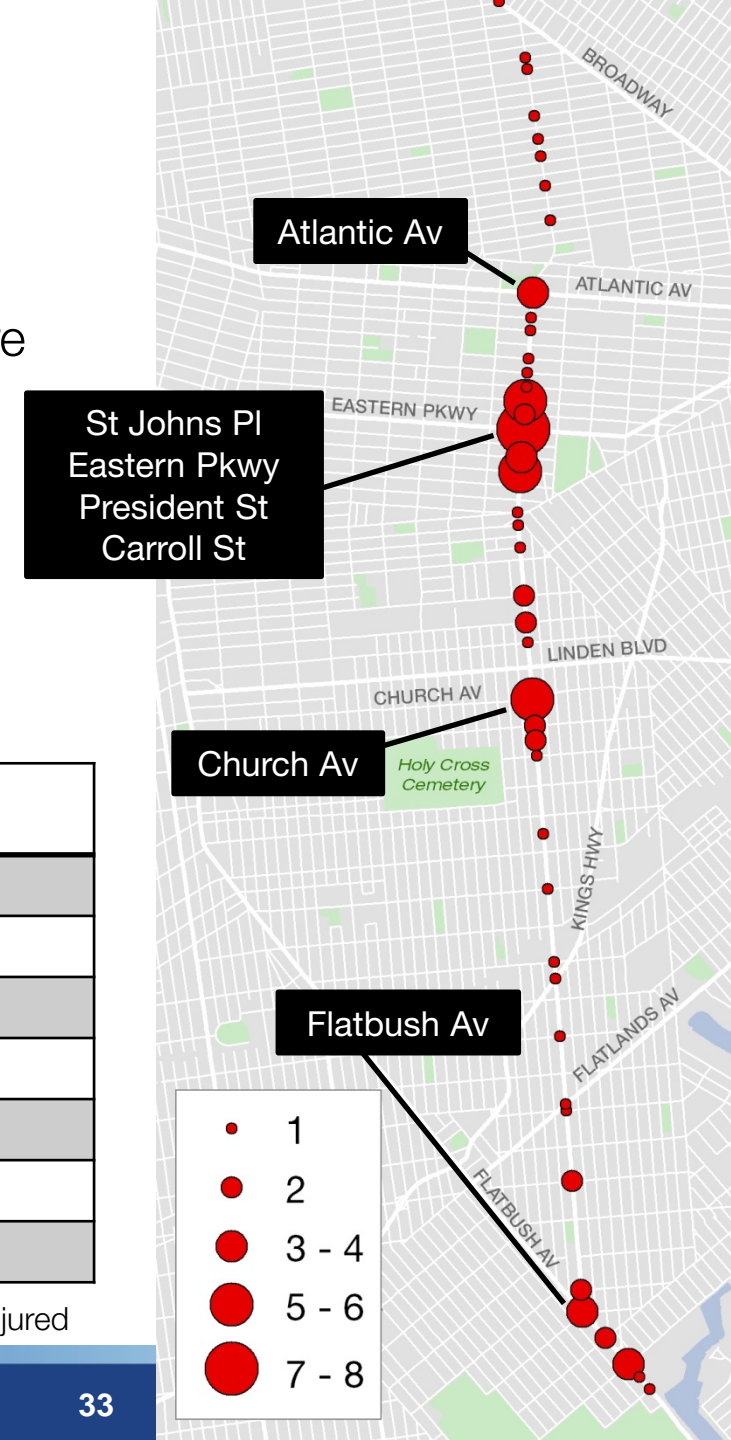
Utica Avenue is a Vision Zero Priority Corridor

- 7 pedestrian fatalities and 57 pedestrian severe injuries between 2009 and 2013
- 1 additional fatality in April 2014
- 60% of vehicles travel above the speed limit (30 mph at time of observation)

Vision Zero Priority Intersections

| Intersection | Ped Fatalities (2009-2013) | Ped KSI* (2009-2013) |
|-------------------------|-------------------------------|-------------------------|
| Utica Av & Eastern Pkwy | 2 | 8 |
| Utica Av & Church Av | 1 | 6 |
| Utica Av & St Johns Pl | 0 | 5 |
| Utica Av & Carroll St | 0 | 5 |
| Utica Av & Atlantic Av | 0 | 3 |
| Utica Av & President St | 0 | 3 |
| Utica Av & Flatbush Av | 0 | 3 |

*Killed or Severely Injured



Select Bus Service Fare Payment



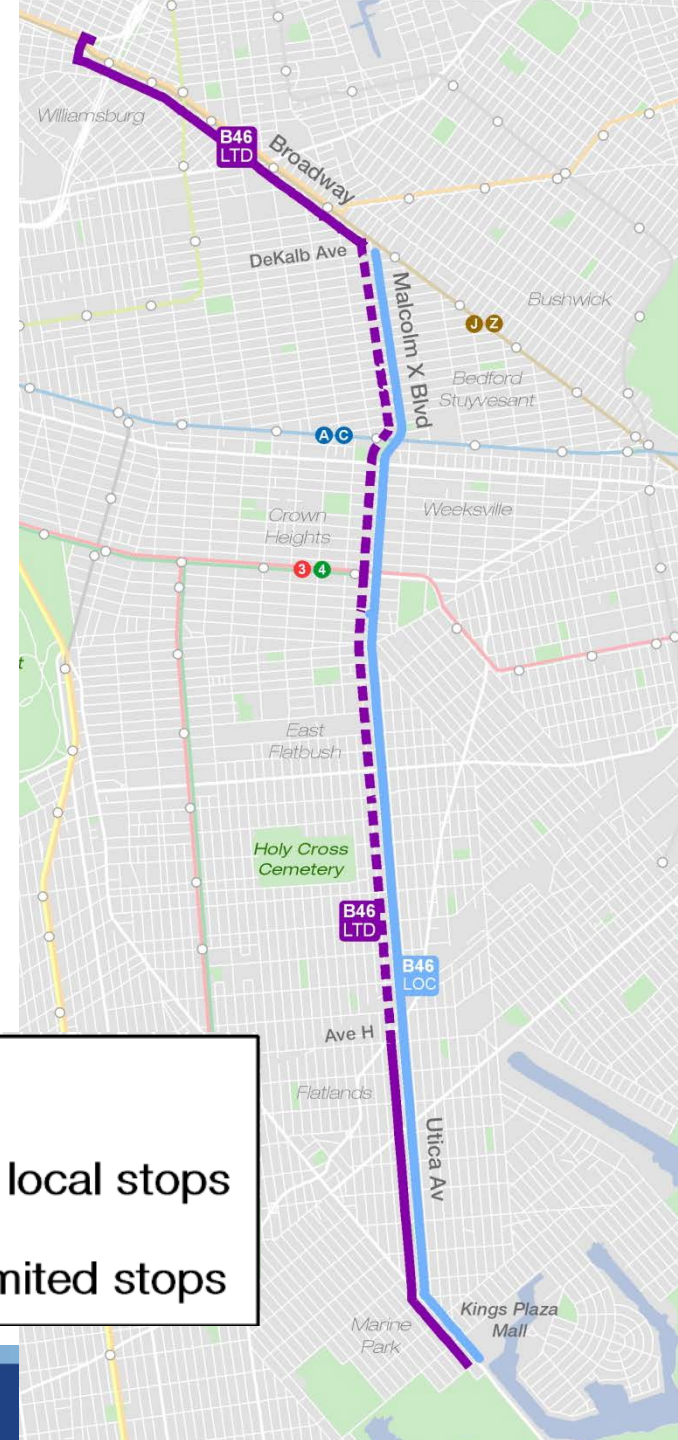
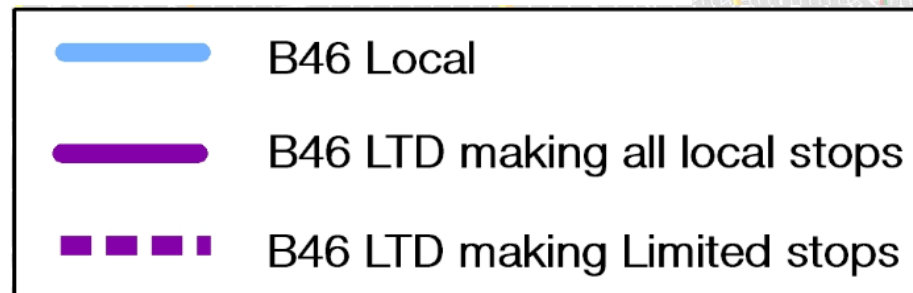
Riders pay with MetroCard or coins before boarding, receive ticket



MTA NYCT conducts random fare payment inspections

Current B46 Local and LTD Service Pattern

- B46 LTD generally travels between Kings Plaza and Williamsburg Bridge Plaza
- B46 LTD makes all local stops north of DeKalb Ave and south of Ave H
- B46 Local generally travels between Kings Plaza and DeKalb Ave



Utica Avenue Design

Brooklyn Community Board 17

Left-Turn Bays /
Restrictions
Implemented in 2014

- Northbound and southbound bus lanes extended
- Left-turn bays / restrictions added at each intersection



Left-turn ban both directions
from Utica Ave onto cross street



Left-turn bay both directions
from Utica Ave onto cross street



FARRAGUT ROAD

Ridership

- High ridership at many existing B46 Limited stops, particularly those with subway/bus transfers
- Largest percentage of riders are traveling north to or south from **3** **4** at Eastern Pkwy or **A** **C** at Fulton St
- Only 9% of riders travel between Broadway and the rest of the route

| Top 5 Busiest Stops | Top 5 Least Busy Stops |
|---------------------|------------------------|
| Eastern Pkwy | Broadway & Arion Pl |
| Fulton St | Broadway & Boerum St |
| Church Ave | Broadway & Willoughby |
| Empire Blvd | Broadway & Malcolm X |
| Ave H | Broadway & Hooper St |

