

# +selectbus service

Webster Avenue

Newsletter 3 / Spring 2013

## Bx41 SELECT BUS SERVICE IS COMING TO WEBSTER AVE ON JUNE 30, 2013

### Offset Bus Lanes



Rendering of bus lanes on Webster Avenue at East 204th Street

Bus lanes bring faster and more reliable service to the 20,000 Bx41 riders

### Off-Board Fare Collection



Faster boarding with off-board fare collection

### SBS Buses



Fast and easy boarding on low floor, three-door buses with SBS branding

### Pedestrian Enhancements



New mid-block crossing at East Tremont Avenue (construction in progress)

Improved street crossings with new pedestrian refuges and medians along Webster Avenue



## User Guide

### BUS RIDERS

- Bx41 SBS replaces the Bx41 Limited
- Bx41 local route remains the same
- SBS fare = local bus fare



*Passengers paying their fare on the M15 SBS in Manhattan*

#### How do I pay my fare on SBS?

1. Pay on the sidewalk at a Metrocard or coin machine before boarding the bus
2. Take your receipt and keep it with you for the entire bus trip
3. Board the bus at any of the three doors - you do not need to show receipt to the bus operator

**A roving team of fare inspectors board buses to check receipts. Passengers without a valid receipt are subject to a \$100 fine.**

### DRIVERS

- Bus lanes on Webster Avenue between E 165th Street and E Gun Hill Road
- Bus lanes are in effect at all times except where otherwise posted



*Offset bus lanes on Livingston Street in Brooklyn*

#### When can I enter a bus lane?

Unless otherwise restricted, vehicles are permitted in the bus lane to:

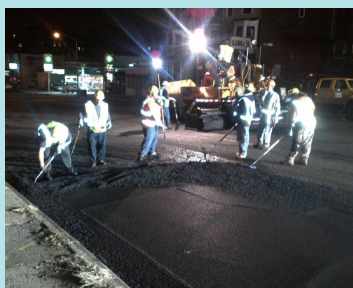
1. Make the next available right turn
2. Quickly pick up or drop off passengers

*Emergency vehicles are always allowed to drive in the bus lane*

**Violating bus lane rules, including driving, parking, or standing in the bus lane results in a \$115-\$150 fine.**

## Street Construction

DOT crews are hard at work bringing improvements to Webster Avenue, including:



*Resurfaced roadway*



*Red painted bus lanes*



*Updated markings*



*Pedestrian islands*



## Project Phasing

In order to bring improvements to the Webster Avenue corridor as quickly as possible, the project has been split into two phases. In 2013, NYCDOT and NYCT will focus on implementing priority improvements, including offset bus lanes and off-board fare collection. A capital project to build more complicated concrete improvements, including SBS bus bulbs, will follow in 2014-2015.

### 2013 Improvements

- 1 Resurfacing the majority of Webster Avenue between E 165th Street and E 204th Street
- 2 Red painted bus lanes on Webster Avenue between E 165th Street and E Gun Hill Road
- 3 Pedestrian safety islands at key locations
- 4 Off-board fare collection

- 5 Traffic improvements at key intersections
- 6 Key bus stop and curb regulation changes
- 7 Transit Signal Priority

### 2014-15 Capital Project

- 1 Build bus bulbs at SBS stations on Webster Avenue
- 2 Additional pedestrian safety improvements, including neckdowns and extended medians



## Community Outreach

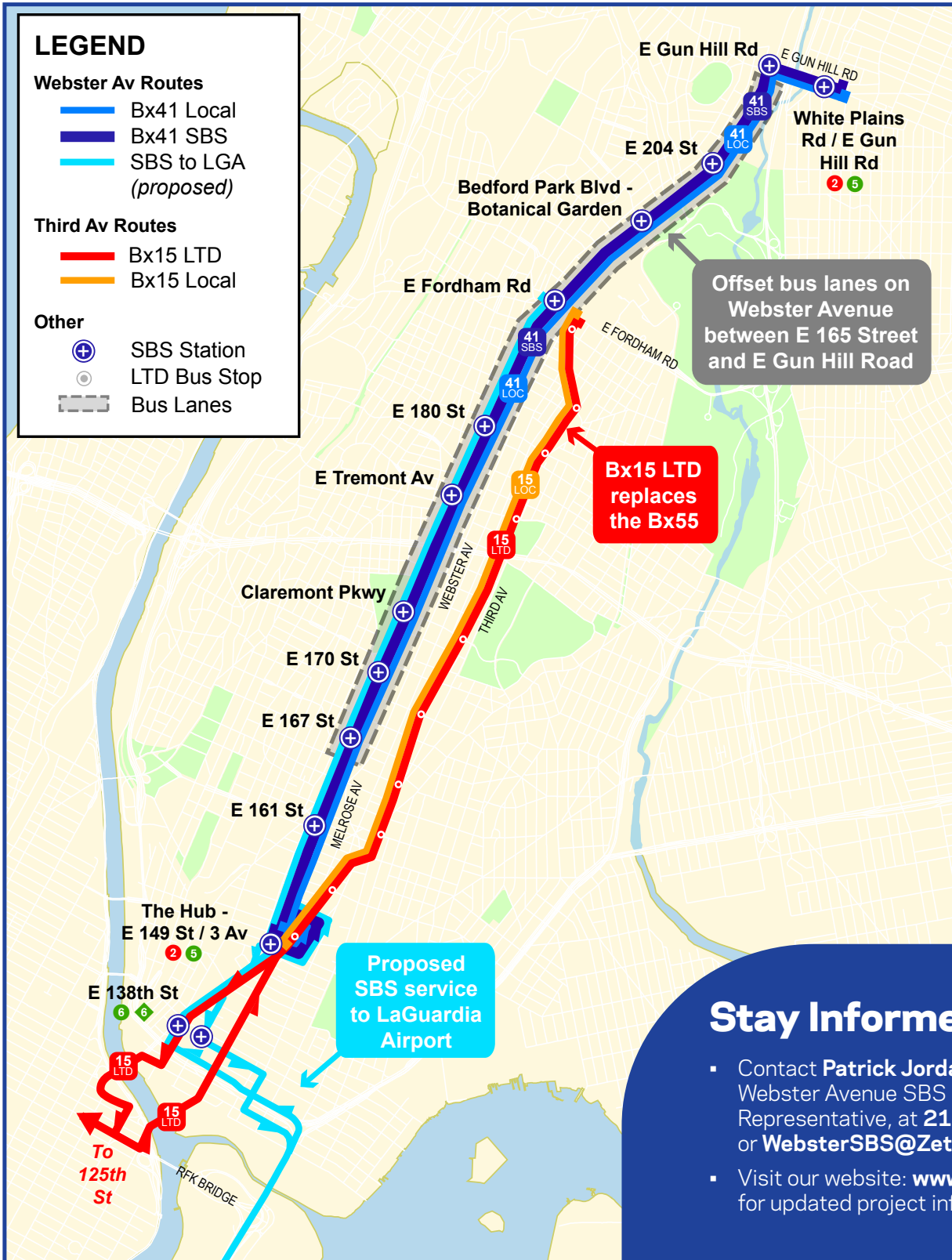
The Webster Avenue corridor received the highest overall ranking of potential new SBS routes at the Bronx BRT Phase II Community Workshop in 2009. In 2011, NYCDOT and NYCT began work on the Webster Avenue SBS Project, meeting with the community many times over the next two years, including:

1. Community Advisory Committee (CAC) Meetings
2. Public Open Houses
3. Door-to-door surveys of local businesses and institutions
4. Numerous stakeholder meetings and presentations



*Public Open House participants consider different design options for Webster Avenue*

## Webster Avenue Corridor Service Plan



### Stay Informed!

- Contact **Patrick Jordan**, the Webster Avenue SBS Outreach Representative, at **212-799-8803** or **WebsterSBS@Zetlin.com**.
- Visit our website: **[www.nyc.gov/bmt](http://www.nyc.gov/bmt)** for updated project information.



[www.twitter.com/NYC\\_DOT](http://www.twitter.com/NYC_DOT)



[www.facebook.com/NYCDOT](http://www.facebook.com/NYCDOT)