

M60 Select Bus Service on 125th Street

Community Board 10 Update
Wednesday, June 12, 2013



How are people getting to 125th Street?

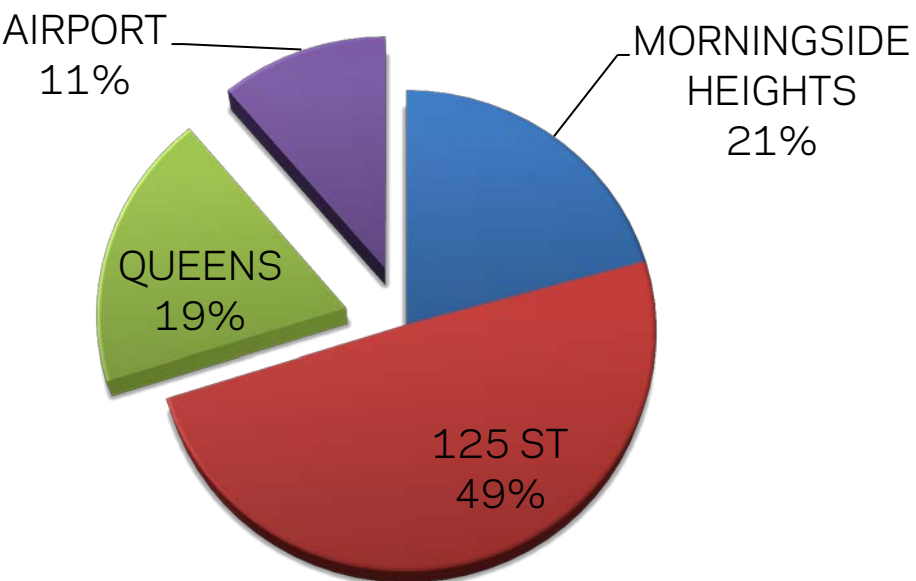


Weekday Bus Boardings on 125th Street (2011)

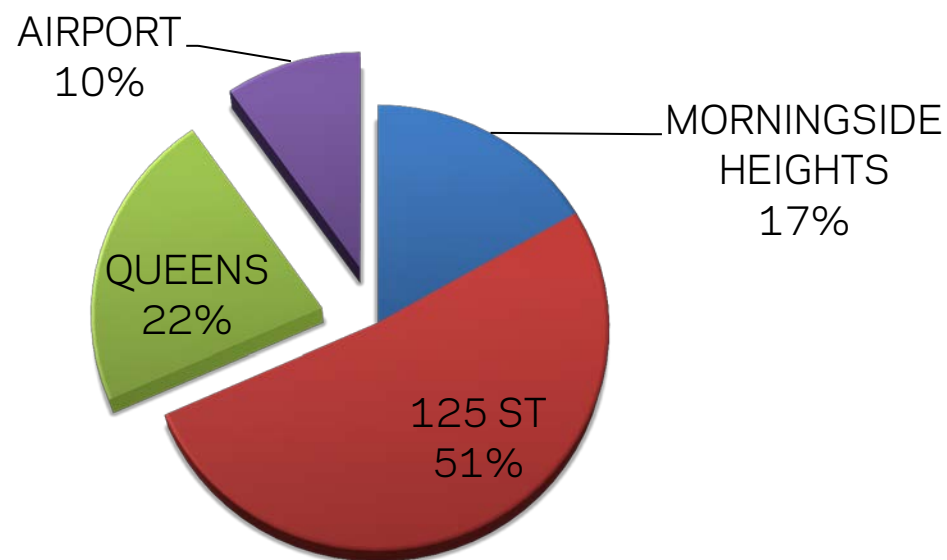
Bx15	M60	M100	M101	Total
8,838	9,682	6,912	7,198	32,630

M60 Ridership

Boardings by Area



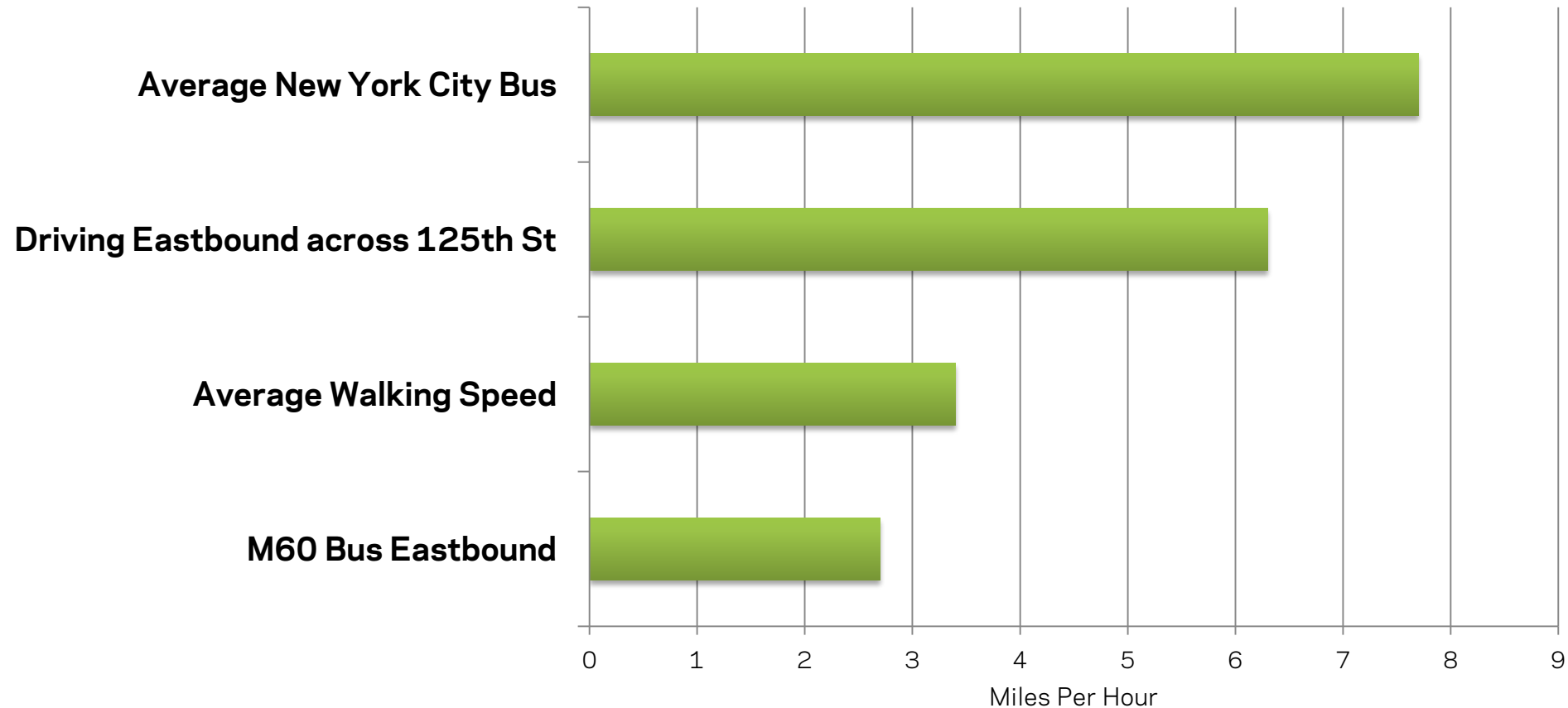
Alightings by Area



Much of the ridership of M60 is concentrated within Manhattan and on 125th Street

Most riders are traveling within Manhattan, not to/from LaGuardia Airport

125th Street Traffic Moves Very Slowly



M60 Buses are **stopped over 60% of the time**

Why 125th St Is Congested



Vibrant business activity day and night

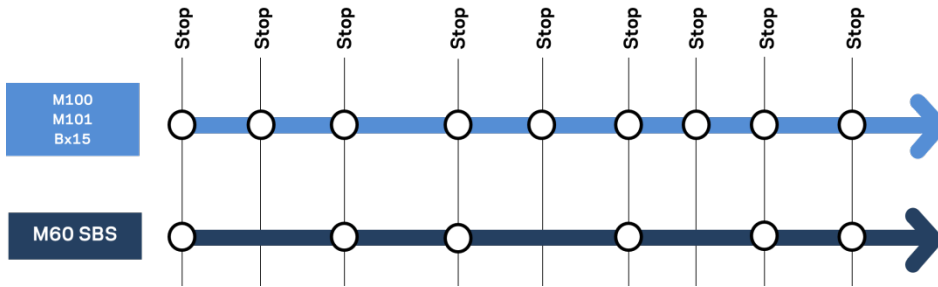
Heavy double parking throughout the corridor

No commercial loading zones → deliveries unable to get to the curb

Short bus stops → buses are unable to safely load/unload customers and block traffic

Select Bus Service on the M60

Limited stops



Off-board fare payment



Offset lanes for buses and right turns



Updated parking regulations



Public Outreach since September 2012

Summer 2012 Consultation with CB9, CB10 and CB11

September 2012 Public Workshop

3 Community Advisory Committee Meetings

2 Public Open House Events

2 Merchant Open House Events

Spring 2013 Community Meetings with CB9, CB10, CB11 Transportation Committees

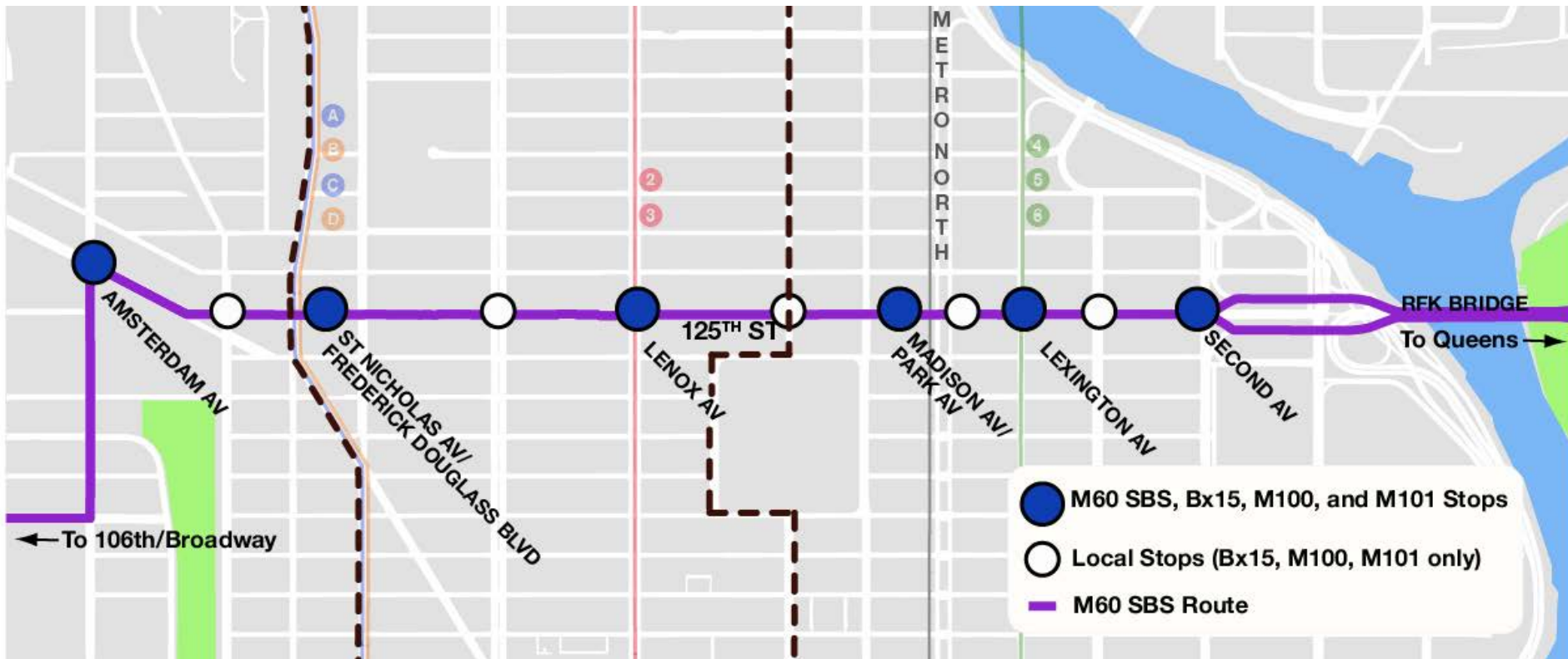
Walking tours of 125th Street

Public tour of M15 Select Bus Service

May 2013 Town Hall Meeting



Proposed SBS Stop Locations on 125th Street



M60 SBS stops at every subway/rail station on 125th St plus Amsterdam Av and Second Av

Bus stops are unchanged on Bx15, M100, M101

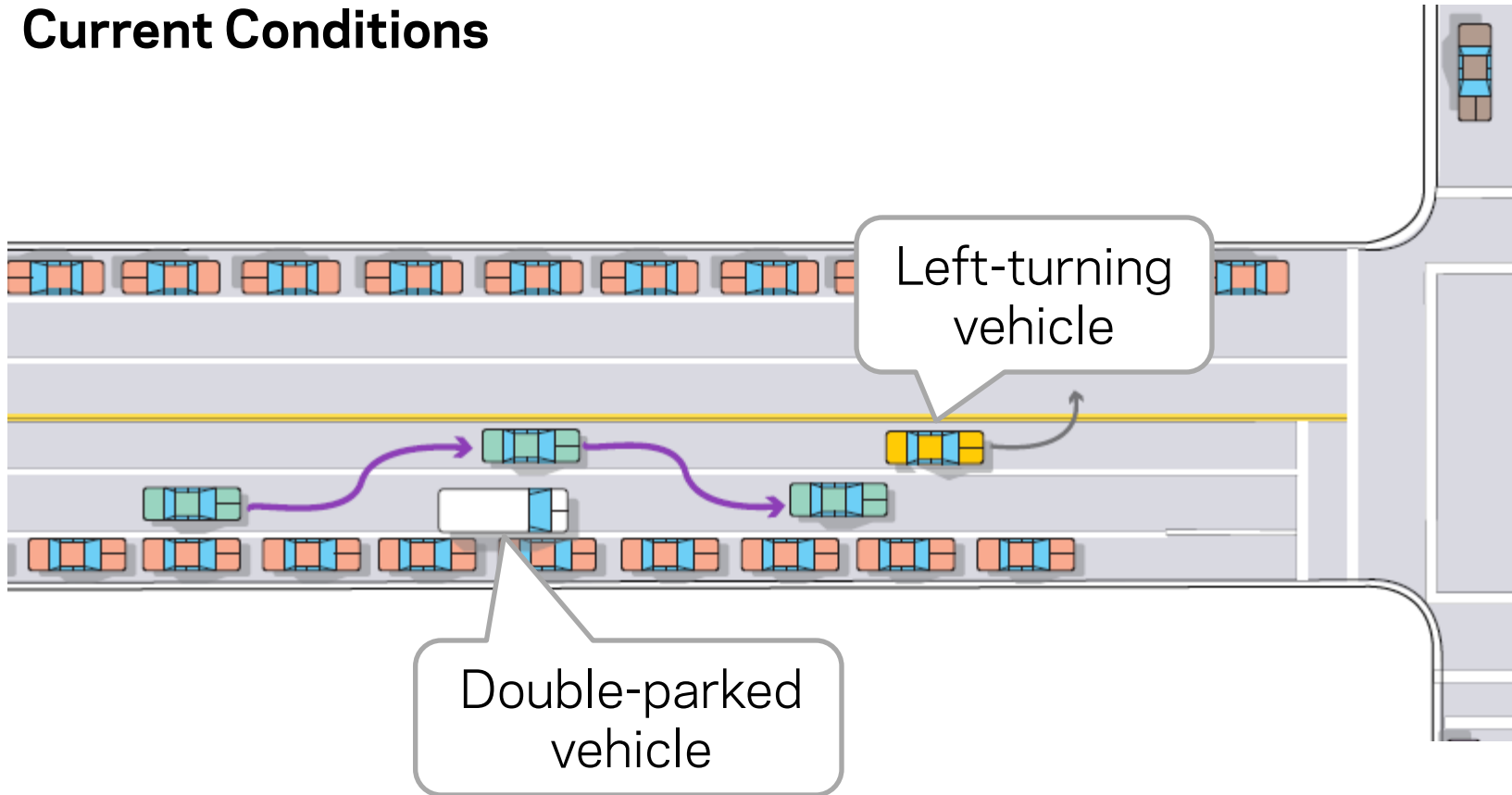
Bus stops will be lengthened to make it easier for buses to get to the curb

Street Design from Lenox Av to Third Av



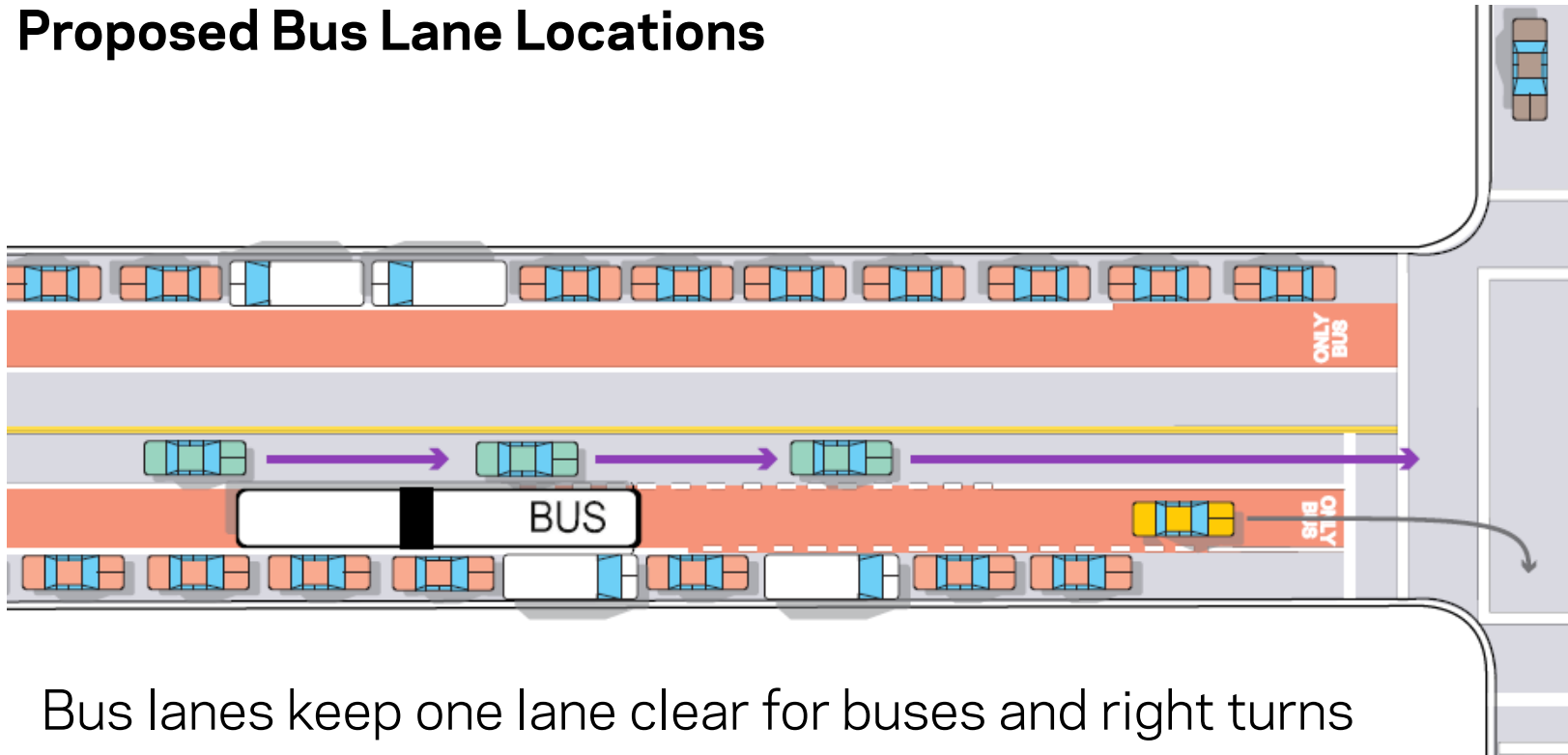
Bus Lane Traffic Benefits

Current Conditions



Bus Lane Traffic Benefits

Proposed Bus Lane Locations

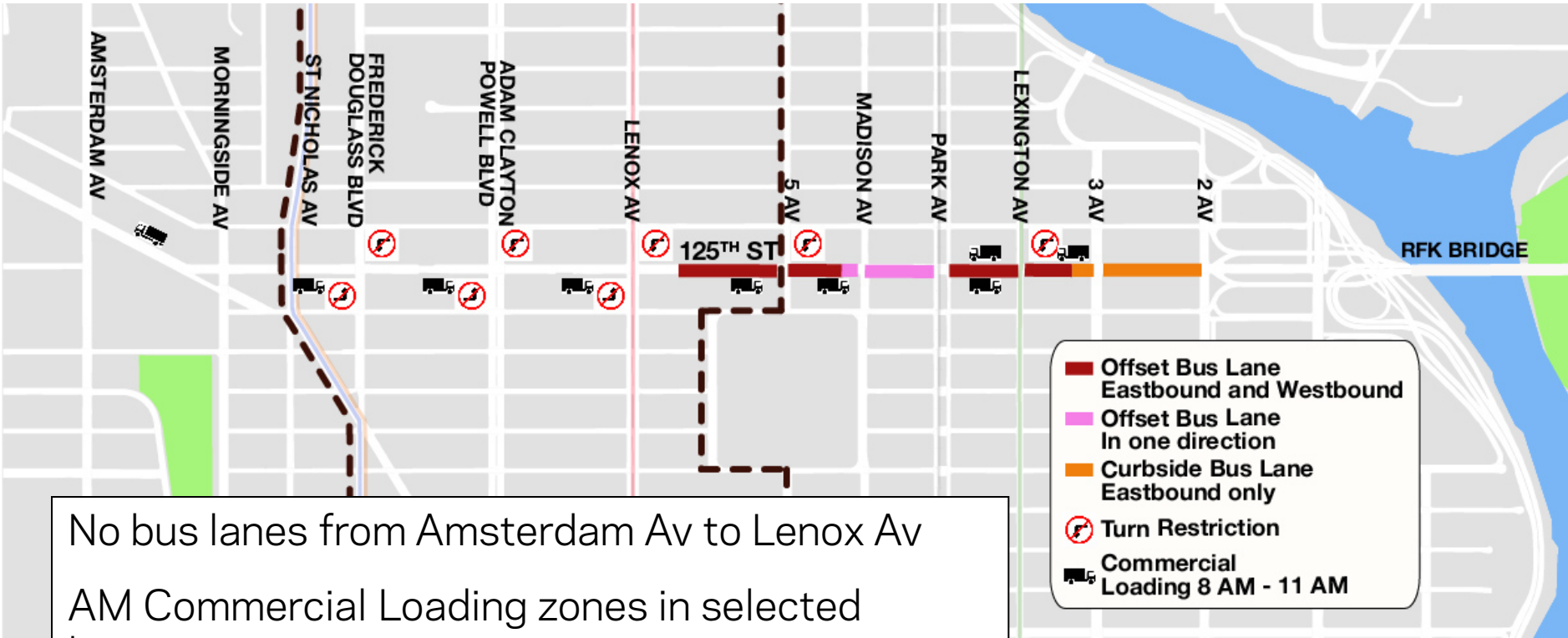


Bus lanes keep one lane clear for buses and right turns

Curb regulations changes ease access to the curb

Left turn restrictions keep through traffic moving and keep pedestrians safe

Revised Street Design

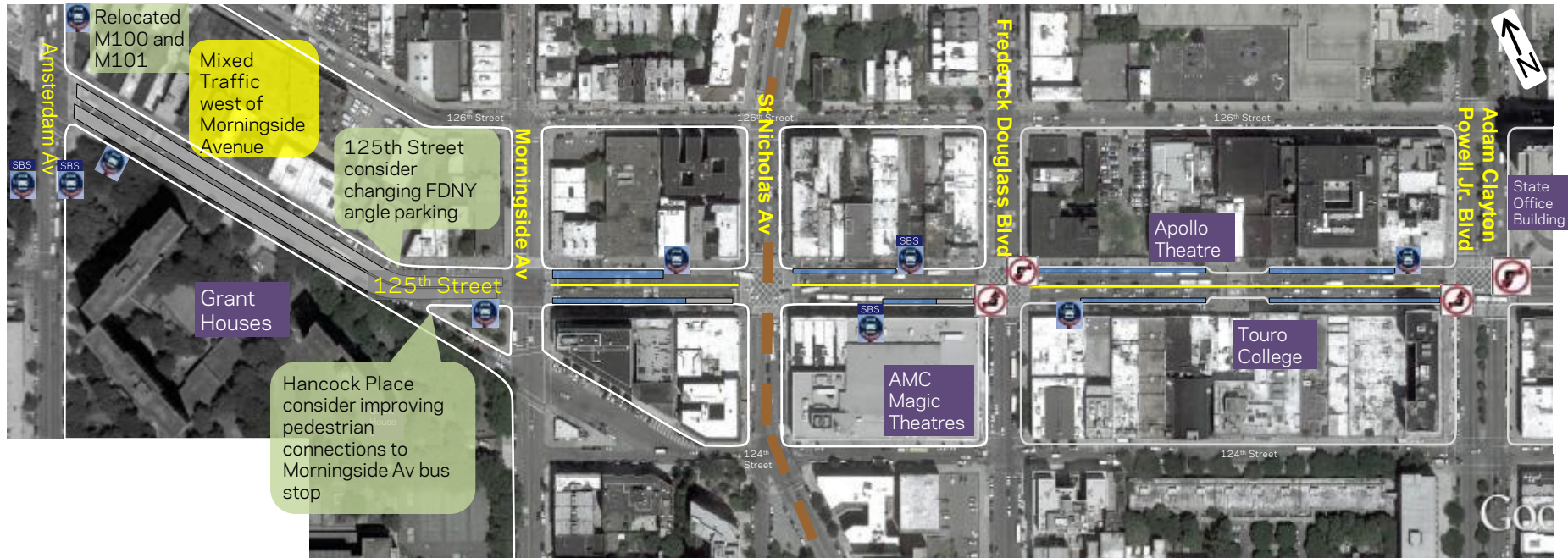


No bus lanes from Amsterdam Av to Lenox Av

AM Commercial Loading zones in selected locations

New left-turn restrictions from 125th St in CB10: Frederick Douglass Blvd and Adam Clayton Powell Blvd

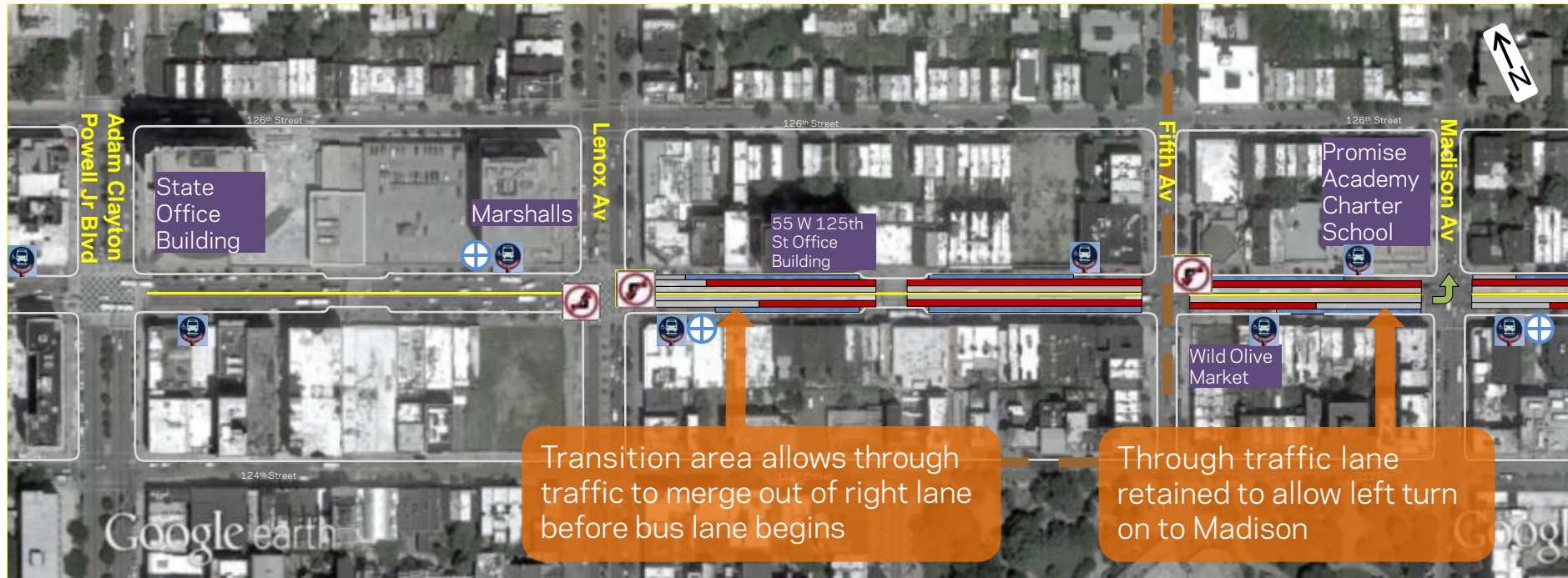
Amsterdam Av - Adam Clayton Powell Jr. Blvd



Legend

	Parking		Bus Only Lane		Turn Restriction
--	---------	--	---------------	--	------------------

Proposed Street Design: Lenox Av - Madison Av



- Legend
- Parking
 - Offset Bus Lane
 - Travel Lane / Right-Turn Bay
 - Turn Restriction
 - Bus Stop for Bx15, M100, M101
 - M60 SBS Station

Parking Regulations Changes in CB10



New metered parking on 125th St between 5 Av and 3 Av

New metered parking on avenue blocks at selected locations

Changes Made in Response to Community Input

Bus lanes begin east of Lenox Av

Hours and locations of commercial loading zones

Keeping left turn from 125th St to St Nicholas Av

Additions to Plan in Response to Community Input

Proposal to add residential parking on nearby streets by converting some No Parking zones to Alternate-Side Parking

124th St: from St Nicholas Av to Lenox Av

126th St: from St Nicholas Av to Park Av

Proposed pedestrian safety improvements at

Amsterdam Av

Hancock Pl

Lexington Av

Next Steps

Finalize Parking Regulations

Finalize Bus Stop Locations

Move toward implementation