



New York City Transit

# Webster Avenue Select Bus Service

Community Advisory Committee Meeting #2 | May 2, 2012 | 6:30pm | Icahn Charter Middle School

# Agenda

- Presentation
- Workshop
- Group discussion
- Next steps



# Community Advisory Committee (CAC)

## Composed of representatives from:

- Elected officials
- Community boards
- Community organizations
- Business representatives
- Major institutions

## Role:

- To provide input and guidance during project design and implementation
- To help relay important project information and updates to your constituents and members



# Features of Select Bus Service

**Bus  
lanes**



**Branding**



**Passenger  
info**



**Stations**

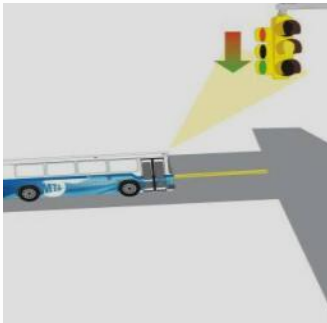


**SBS**

**Faster  
fare  
collection**



**Bus  
signal  
priority**



# Bx12 SBS - Features

- New/upgraded bus lanes
  - Curbside 7am-7pm lanes
  - Red coloration
  - Overhead signs for visibility
  - “Delivery Windows” in retail core
- Off-board fare collection
- Transit Signal Priority
- Simplified service pattern
- New shelters





# Bx12 SBS - Results



## **Implementation**

June 2008

## **Travel Time**

20% reduction in running time

## **Ridership**

7% increase from June 2008 to June 2009

## **Customer Satisfaction**

98% satisfied or very satisfied

# Potential SBS features



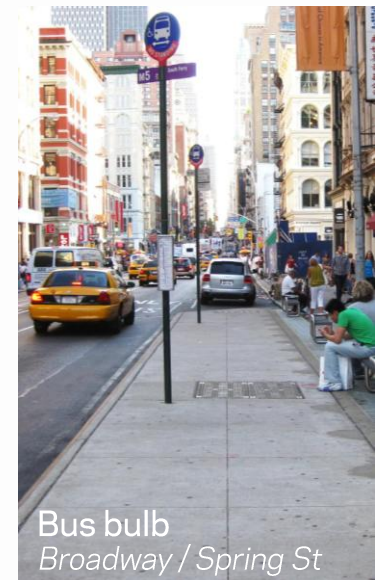
Offset bus lane  
1st/2nd Avenue SBS (M15)



Pedestrian island  
New York Av / Empire Blvd



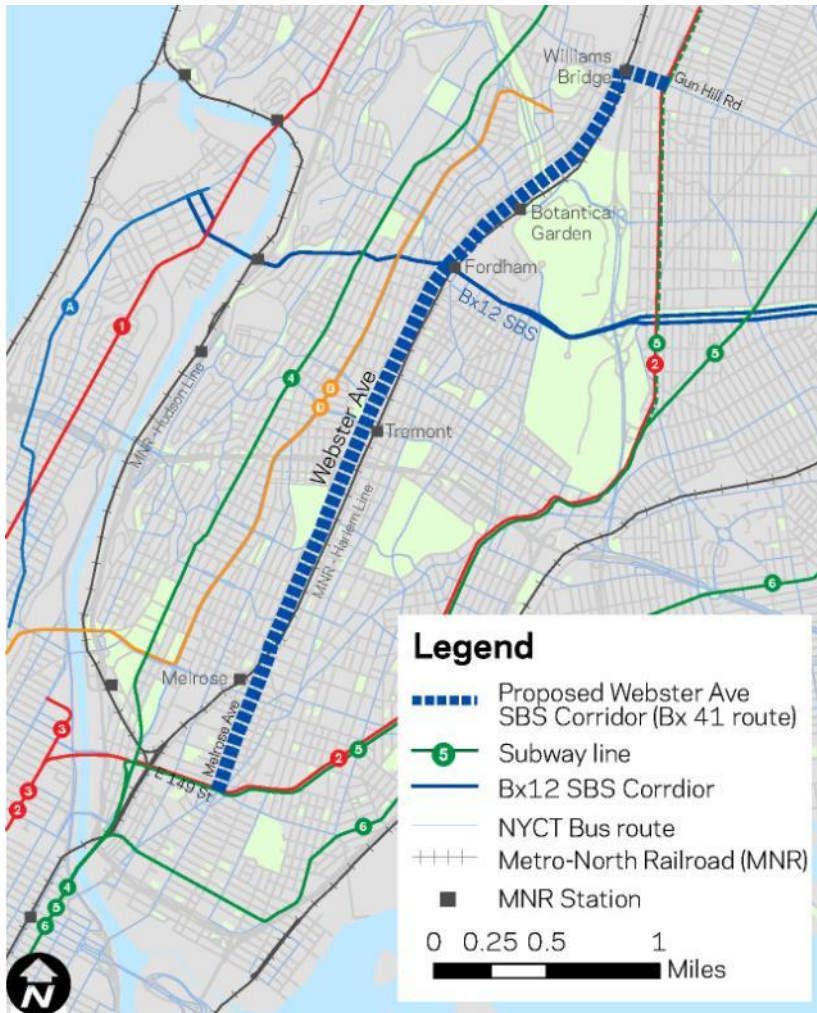
SBS Station  
1st/2nd Avenue SBS (M15)



Bus bulb  
Broadway / Spring St



# Webster Avenue Corridor



- Based on the existing Bx41 route
- 5.3 miles long
- Within a quarter mile of the corridor:
  - 125,000 residents
  - 74% of households do not own a car
  - 63% of residents commute by transit



# Project goals



1. Speed buses and improve reliability



2. Improve safety for all corridor users



3. Support community needs

# Project benefits

- Faster and more reliable transit service for the 22,000 daily Bx41 riders
- Expanded SBS network in the Bronx
- Coordinated bus service pattern between Webster Ave and 3<sup>rd</sup> Ave
- Improved safety for all corridor users
- Support economic growth along the corridor



# CAC Meeting #1 - Feb 6, 2012



## Main issues raised:

- **Bx41** – bus service needs both operational improvements to make it run faster/more reliably and amenity improvements (e.g. bus shelters) to improve the bus rider experience
- **Curb access and parking** - especially near Fordham Plaza
- **Future development** along the corridor is coming, especially north of Fordham Rd, and should be considered during project development

# Data collection

Collected and analyzed a large amount data in order to:

- Understand how the corridor works as a whole
- Guide discussion about specific areas
- Inform design decisions

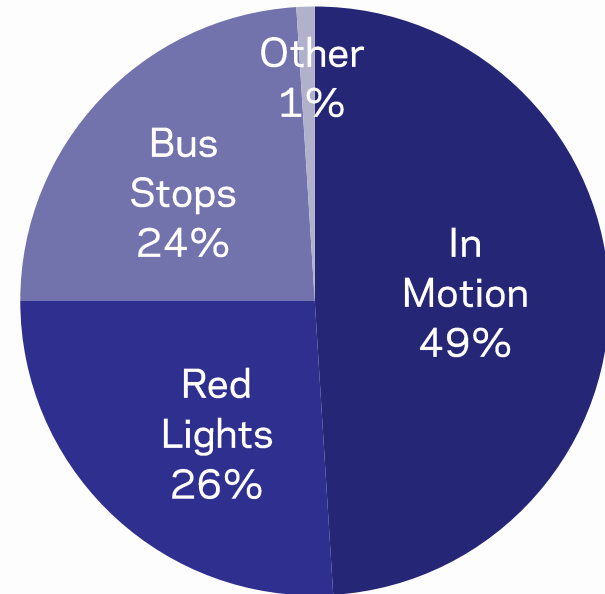
Types of data collected:

1. Bus travel times and types of delay
2. Bus passenger volumes
3. Traffic volumes and travel times
4. Parking occupancy and duration
5. Safety (vehicle, pedestrian, and bus crashes)



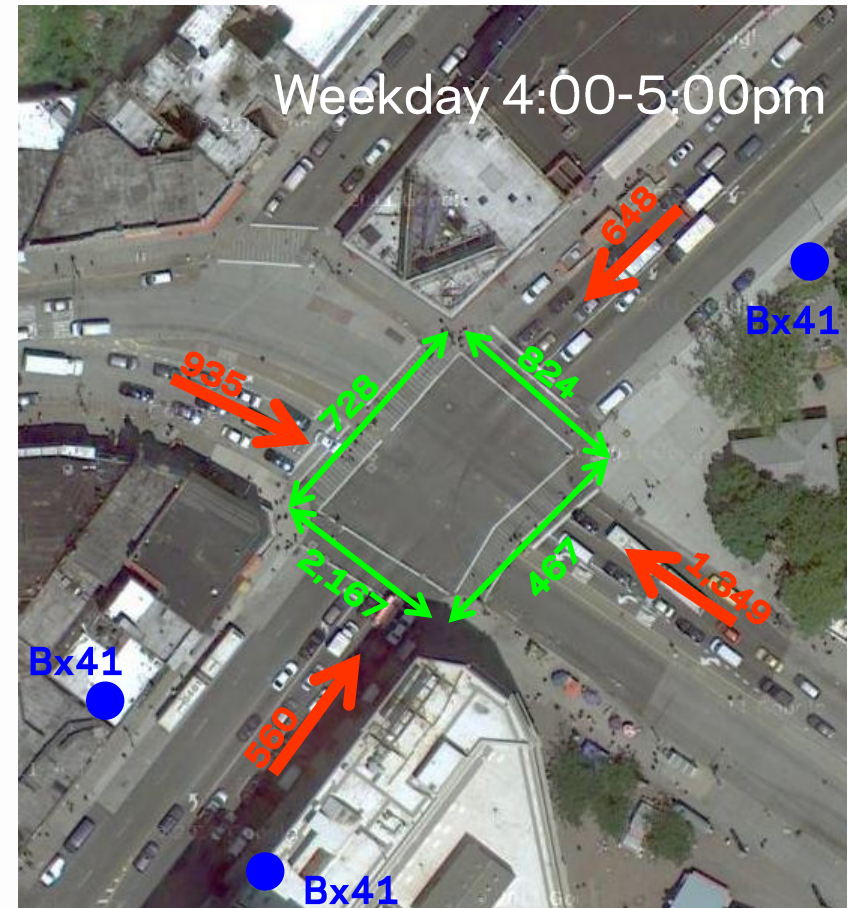
# Example - bus delay

- Bx41 LTD buses are stopped more than 50% of the time
- One-way travel time can vary by up to 20 minutes (typical times are between 37 and 57 minutes)
- Travel times are worst in the midday and PM peaks



# Example - Fordham Road

- There are 20% more pedestrian movements than vehicles at the Webster Av / Fordham Rd intersection during peak hours
- Peak pedestrian volumes are similar to Midtown Manhattan
- More than 4,000 people board the Bx41 here daily; it is the busiest stop on the route
- The intersection has the highest number of total crashes and highest number of pedestrian crashes on the corridor



**Pedestrians = 4,186 total movements**

**Vehicles = 3,492 total movements**



# Example - parking

*Analyzed 10 different sample blocks along the corridor between 7am and 7pm*

- 47% of the time there was at least one double parked vehicle on the east side of Webster Av between E 170 St and E 171 St
- 58% of vehicles parked for less than 15 minutes on the west side of Webster Av between E 189 St and Fordham Rd
- On average, only 20% of parking spaces on the east side of Webster Av just south of Gun Hill Rd were occupied during the day



# Project timeline



- Present design ideas which look at transit, traffic, and pedestrian improvements
- Evaluate the effects of each idea at two representative locations (E 167<sup>th</sup> St and E 204<sup>th</sup> St). Impacts to be considered:
  - Transit travel time
  - Traffic flow
  - Safety
  - Parking / delivery access
- Discuss ideas with the CAC and local stakeholders



# Workshop



# Next steps

- **Spring 2012**

- 1<sup>st</sup> Public Open House
  - Wednesday May 16, 2012 6:00 – 8:00pm
  - Icahn Charter Middle School Cafeteria
  - 1506 Brook Avenue, Bronx, NY 10457
- Begin developing corridor plan based on data analysis and feedback from the CAC meeting and open house

- **Summer 2012**

- Traffic and environmental analysis
- Targeted outreach for bus riders and local businesses along the corridor

- **Fall 2012**

- CAC Meeting #3 – Present draft corridor plan