

New York City Transit



# Nostrand Avenue / Rogers Avenue Select Bus Service Community Advisory Committee Meeting 5 Tuesday, June 19, 2012

# Agenda

Introductions

Project Summary

Construction Process

- Nostrand from Flushing to Atlantic
- Rogers, Bedford, and Southern Nostrand
- Williamsburg Bridge Plaza
- Parking and Loading

Questions and Answers



# SBS Service

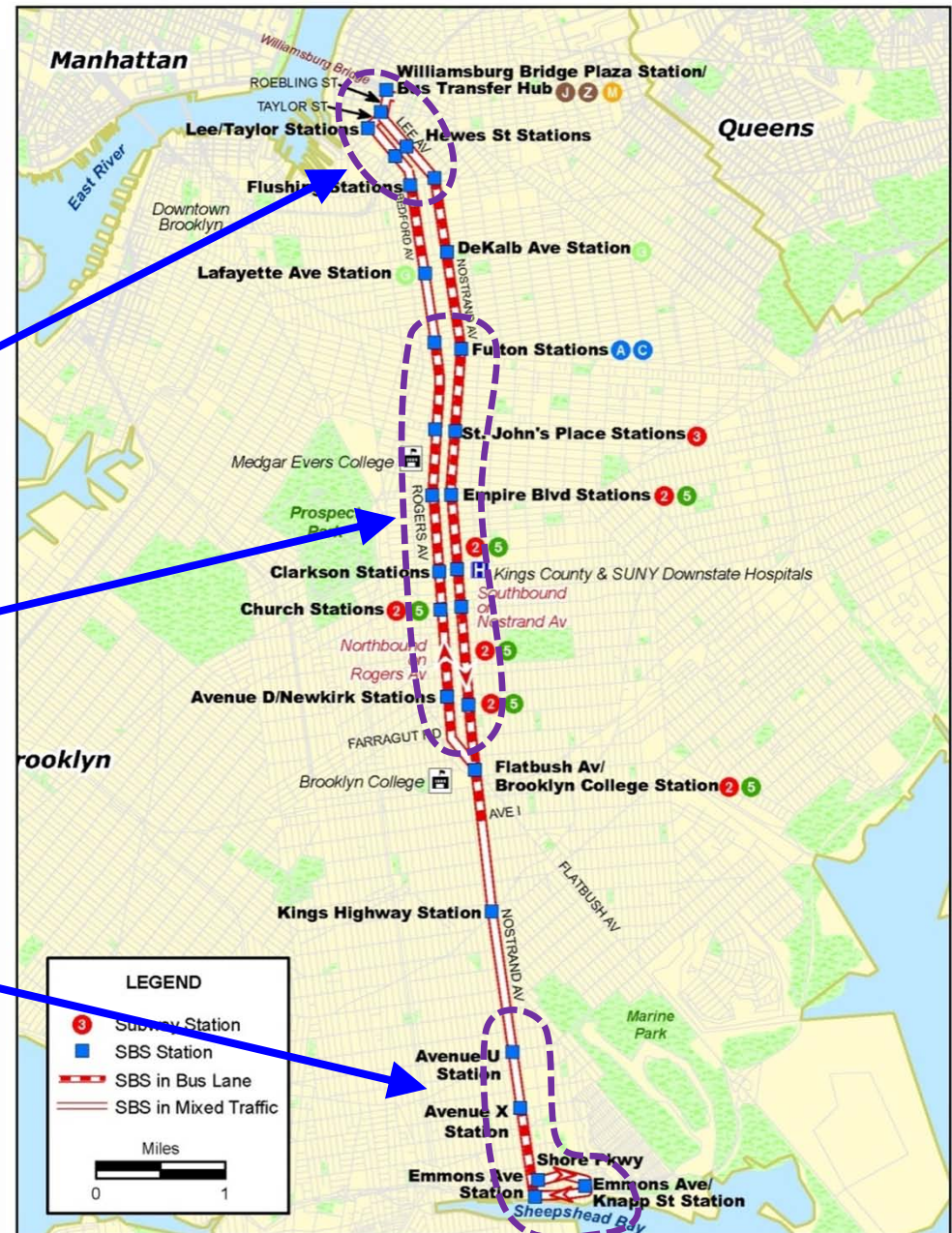
B44 Limited becomes SBS,  
with fewer stops

Only SBS operates north of  
Flushing Ave

B44 SBS will operate  
northbound on Rogers Ave,  
B44 local remains on  
New York Ave

Both SBS and local service  
travels south of Ave U to  
Emmons Ave

SBS will use new three-door,  
low-floor, articulated buses



# Nostrand SBS Project Features

Design from Flushing Ave to Eastern Pkwy, and Empire Blvd to Farragut Rd



Note: Bus Lane is at right curb on Nostrand & Rogers between Eastern Pkwy & Empire Blvd, and on Bedford Ave between DeKalb & Flushing Aves



# Nostrand SBS Project Features

## Empire Blvd SBS Station

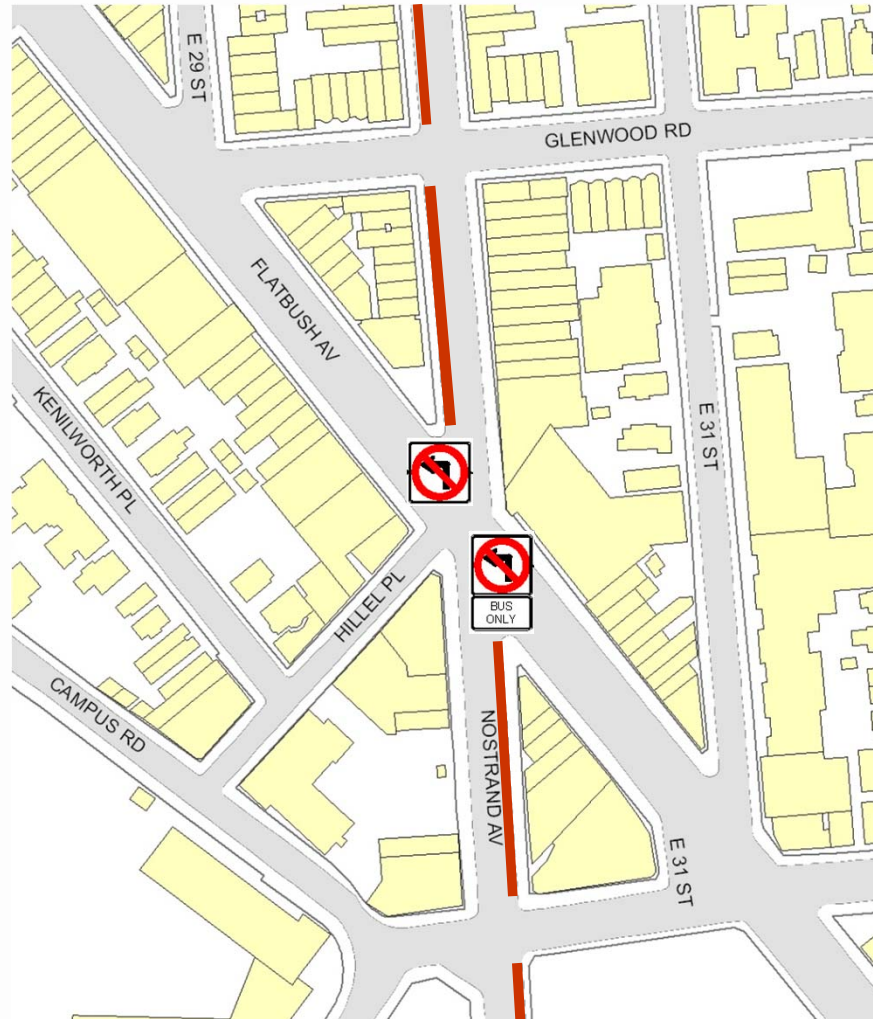


# Nostrand/Flatbush Junction Area

Curbside bus/right turn lanes for peak periods provide extra capacity on approach to Flatbush Ave.

Left turn bans reduce conflicts in the intersection.

Traffic flow and safety are improved.



# Delivery Zones

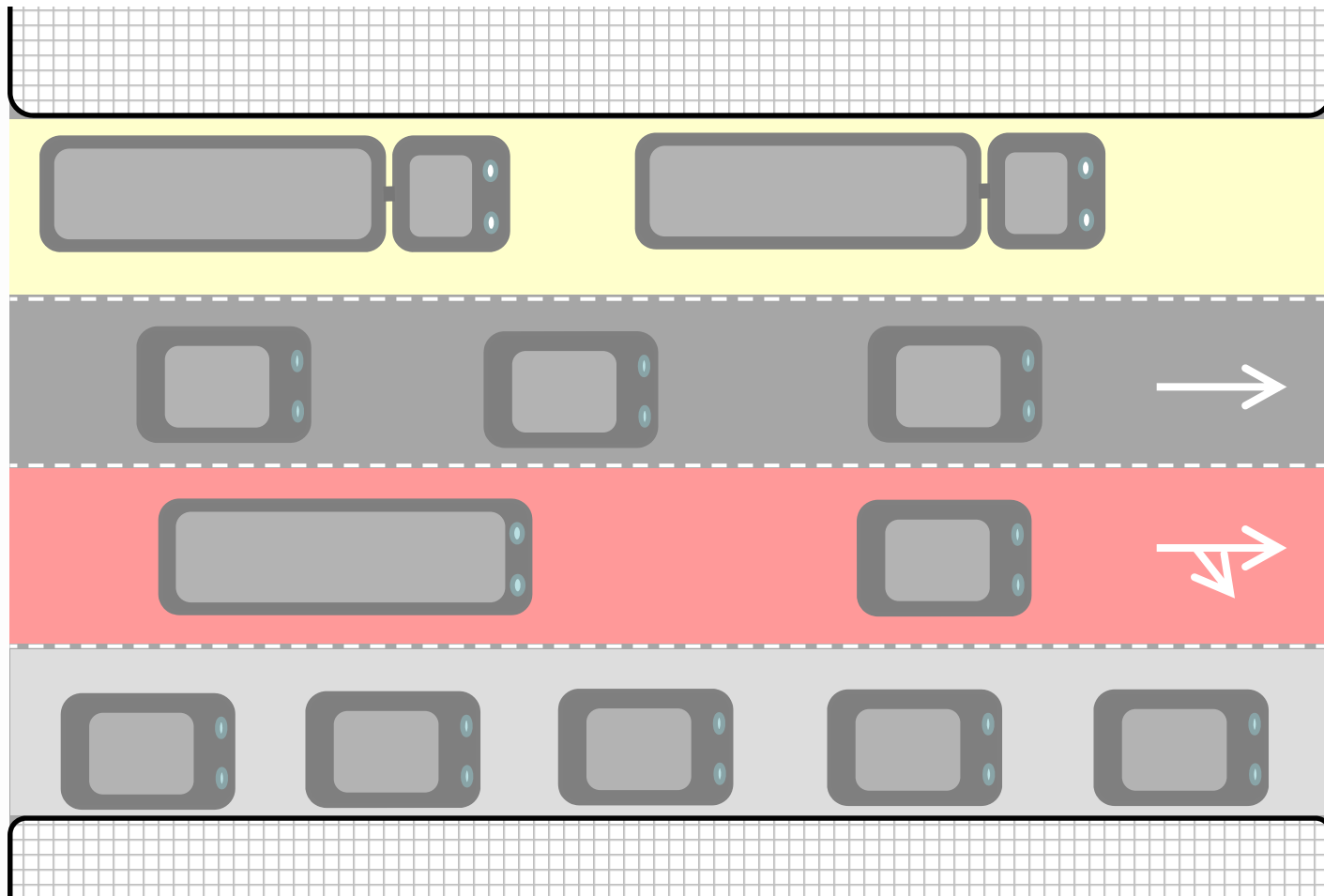
Commercial loading zones  
keep curb clear for store  
deliveries

With trucks using curb instead  
of double-parking, travel  
lanes are kept open



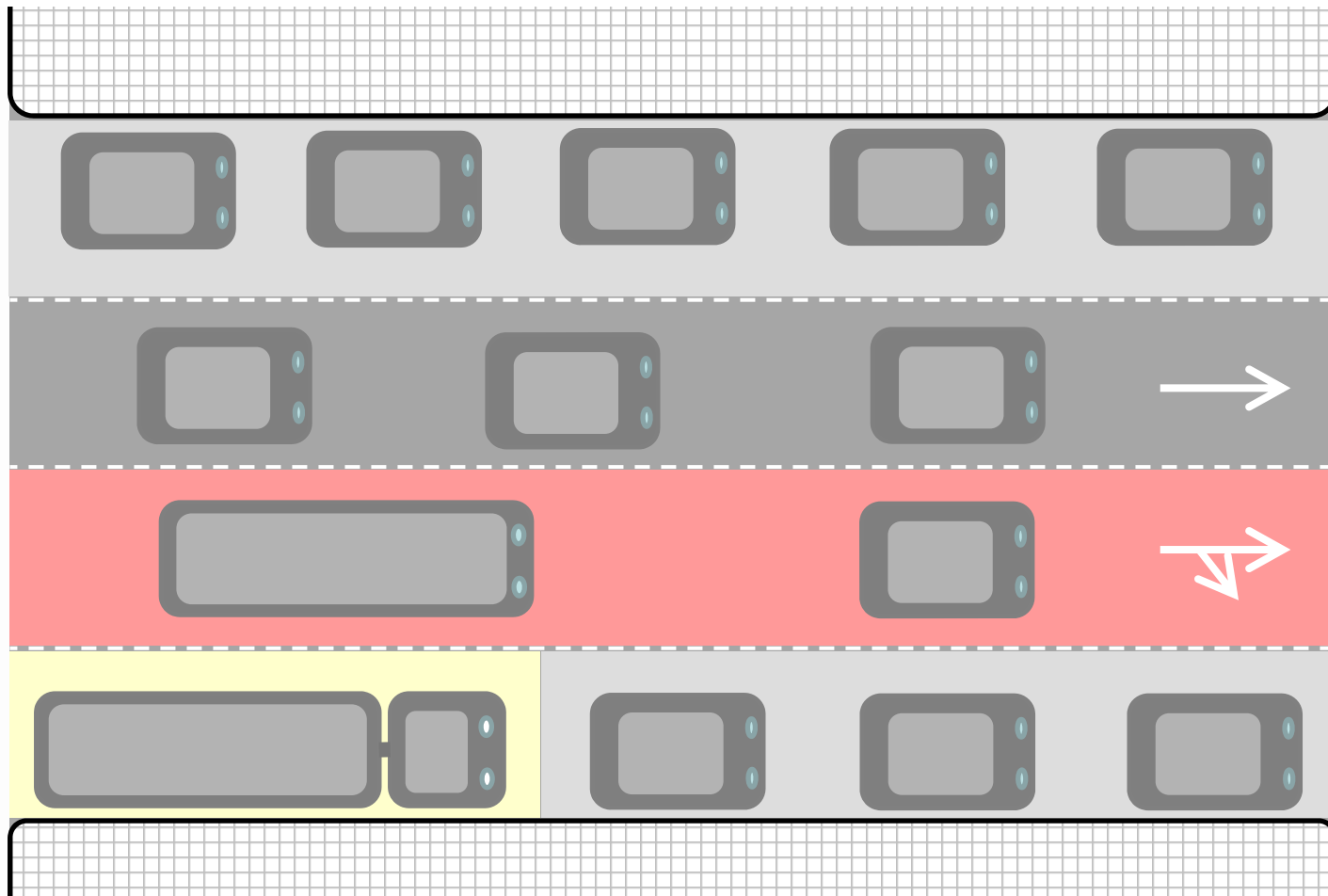
## Overall Plan:

Delivery “Windows” on Alternating Curbs,  
10 AM to Noon on East Curb, Noon to 2 PM on West Curb





# Site-Specific Plan for Special Needs: Delivery Zones on Part of Curb, All Day or Midday



# Metered Parking

Most commercial areas have parking meters

Add meters in commercial areas where there are parking time limits but no meters, or no limits at all

All single space meters will be replaced by Muni-Meters



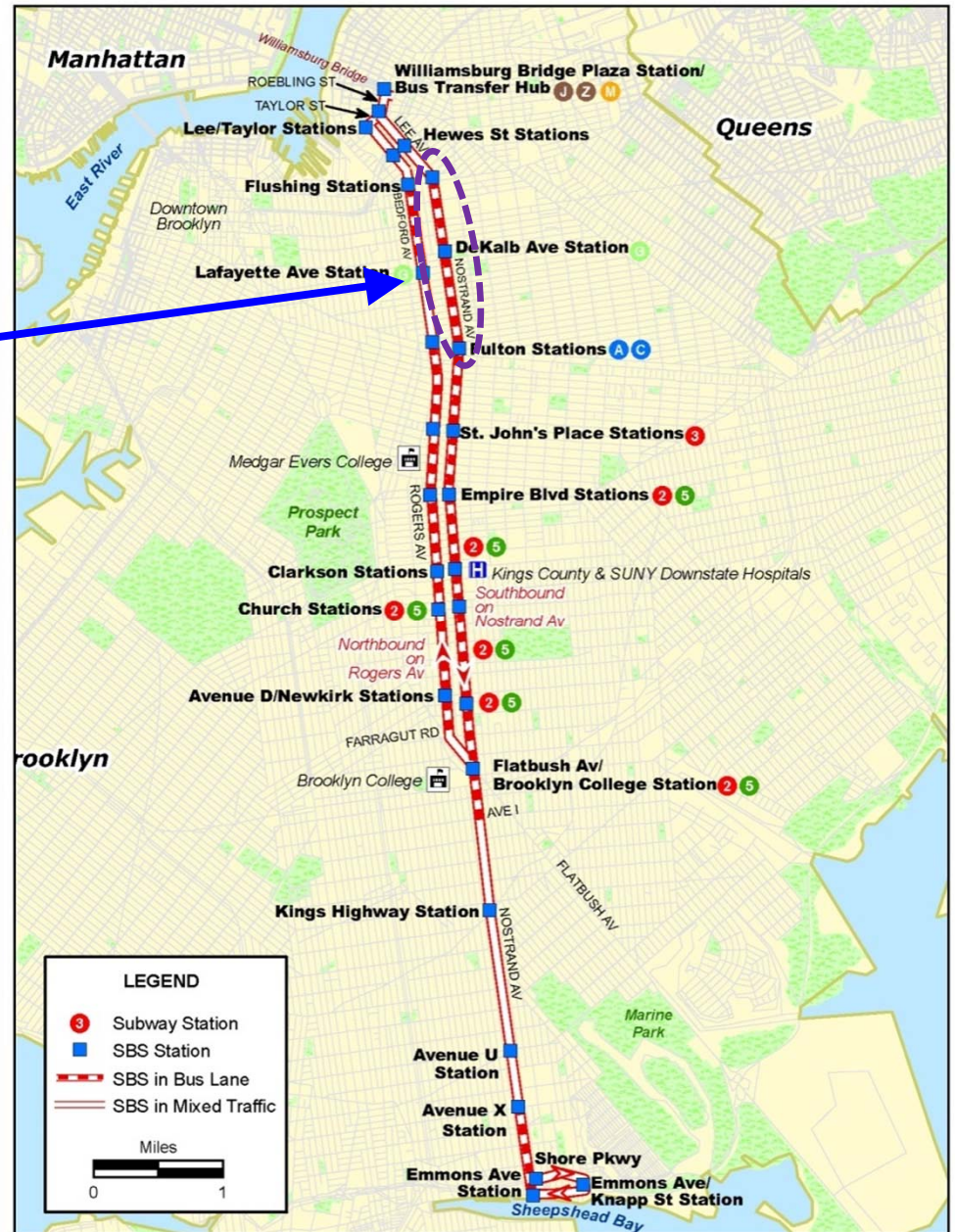
# Northern Nostrand Reconstruction

DDC Project HWK 1129 will fully reconstruct Nostrand Ave from Flushing to Atlantic. The entire street and sidewalks will be rebuilt.

Includes:

- SBS bus bulb stations at DeKalb Ave and Fulton St
- Bus lane
- All new roadway and sidewalks

Construction has begun, will be complete by Fall 2014





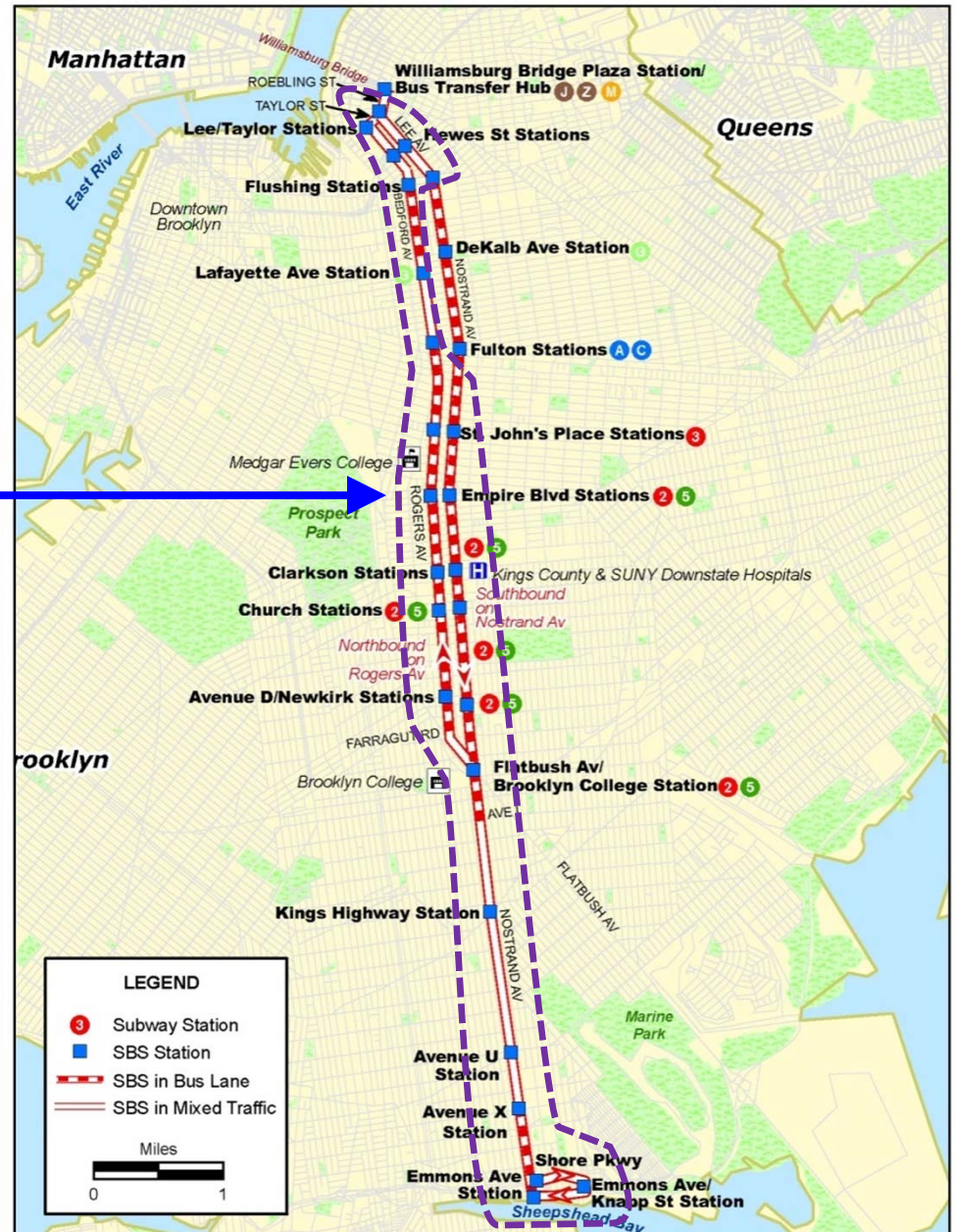
# Nostrand/Rogers SBS Construction

DDC Project HWK 1130 will build SBS features on Rogers, Bedford, and Nostrand Aves south of Atlantic Ave

Includes:

- SBS bus bulb stations
- Bus lanes and street resurfacing
- Sidewalk repairs

Construction will begin this fall, will be complete by late 2013



# Nostrand/Rogers SBS Construction

Most construction will be at SBS stations:

- Bus bulbs
- Bus pads
- Fare machines
- Shelters
- Landscaping

In between stations, faster work:

- Repaving
- Bus lane painting
- Some sidewalk repairs





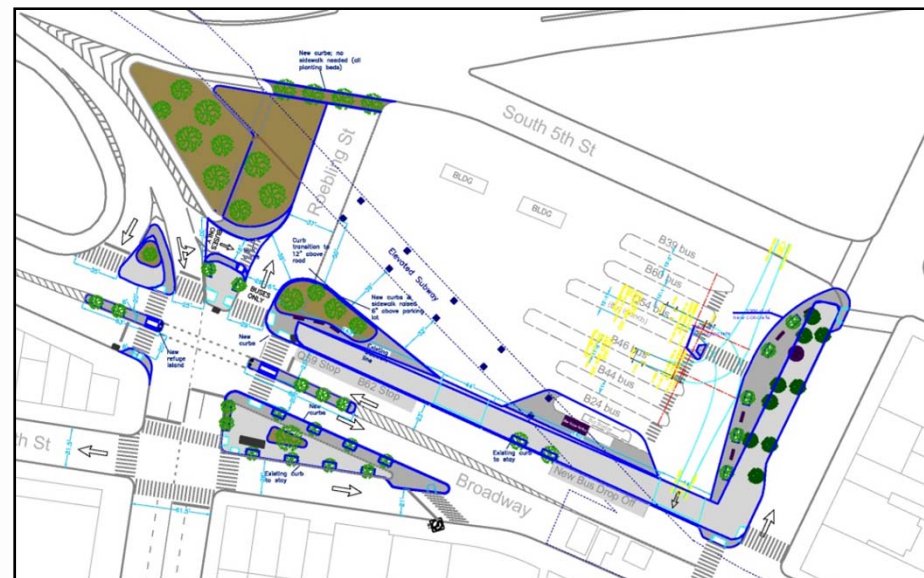
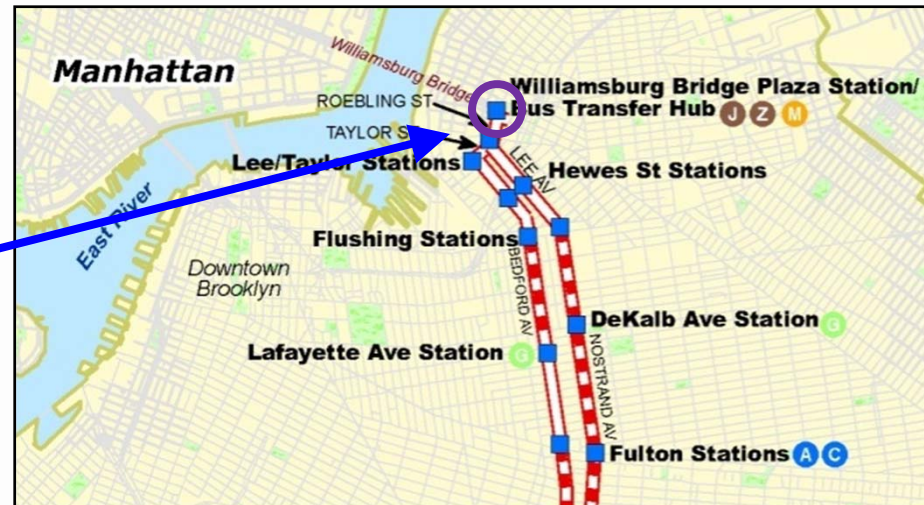
# Williamsburg Bridge Plaza Construction

Future DDC project will build enhancements to pedestrian and bus facilities at and around the bus terminal.

Includes:

- Safer pedestrian crossings
- More greenery
- Central waiting area “plaza”

Design will be in 2012-2013, with construction expected in 2014-2015.



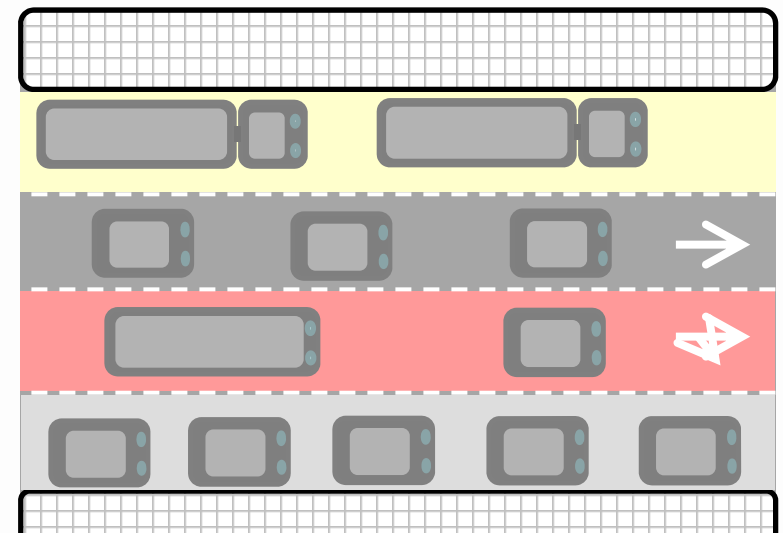


# Curb Regulation Changes

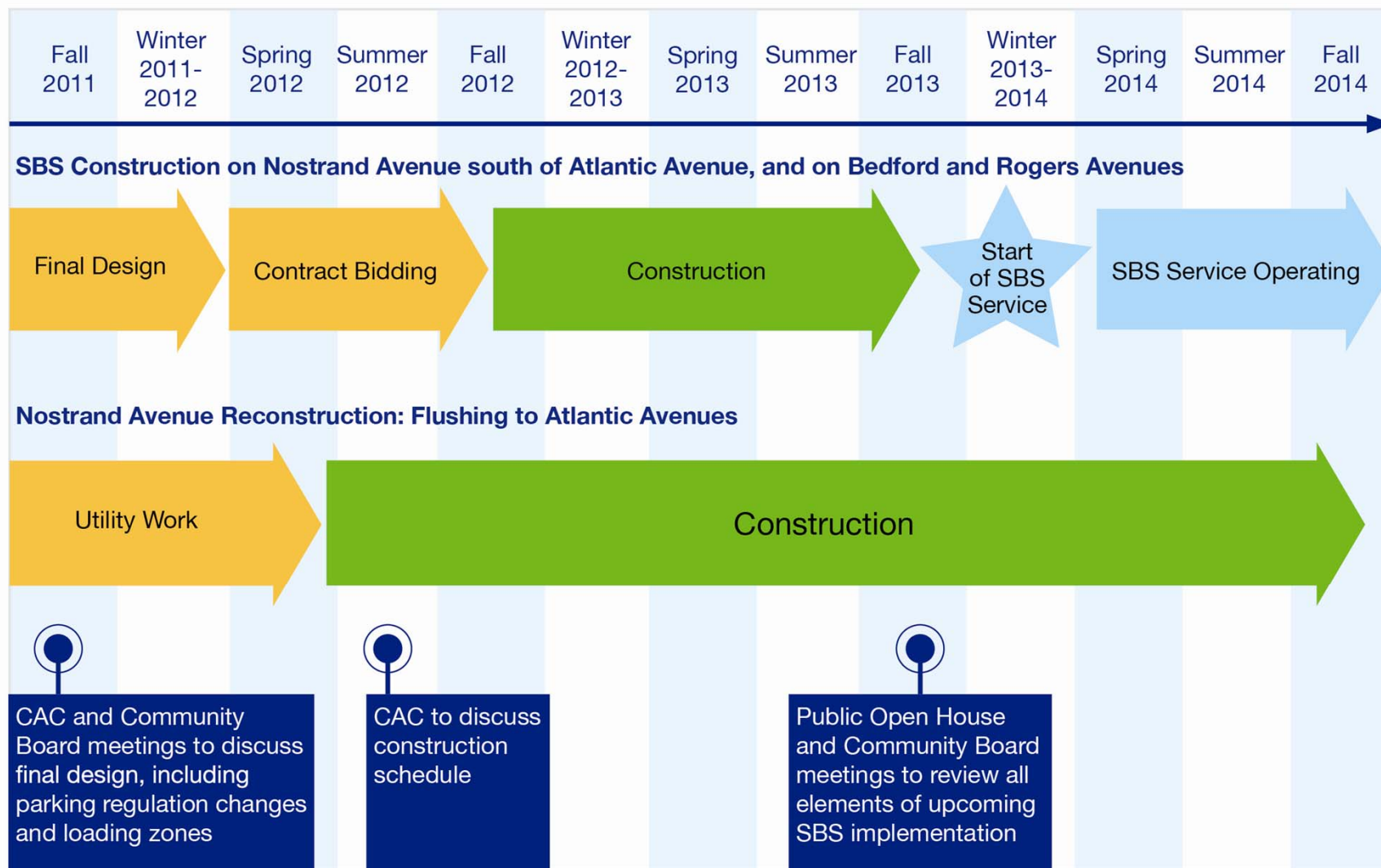
## Nostrand south of Atlantic, and Rogers Ave

Rush hour curbside travel lanes will be switched from the right to the left side of the street in the fall, to allow bus bulb construction on the right side.

Midday commercial loading zones will be implemented during construction.



# Combined Construction Schedule



# Questions and Answers