

First Avenue/Second Avenue Select Bus Service Community Advisory Committee Meeting #4

Julia De Burgos Latino Cultural Center
Thursday, April 29, 2010



New York City Transit



Agenda

Public Outreach

Changes To Design Since January

Station Location Updates

First Avenue Bicycle Facility Improvement

Implementation Timeframe

Bus Lane and Parking Regulations

Overview

M15 Select Bus Service begins:
October 10, 2010

Over 10 miles of new and improved bus and bicycle facilities

Construction begins in May

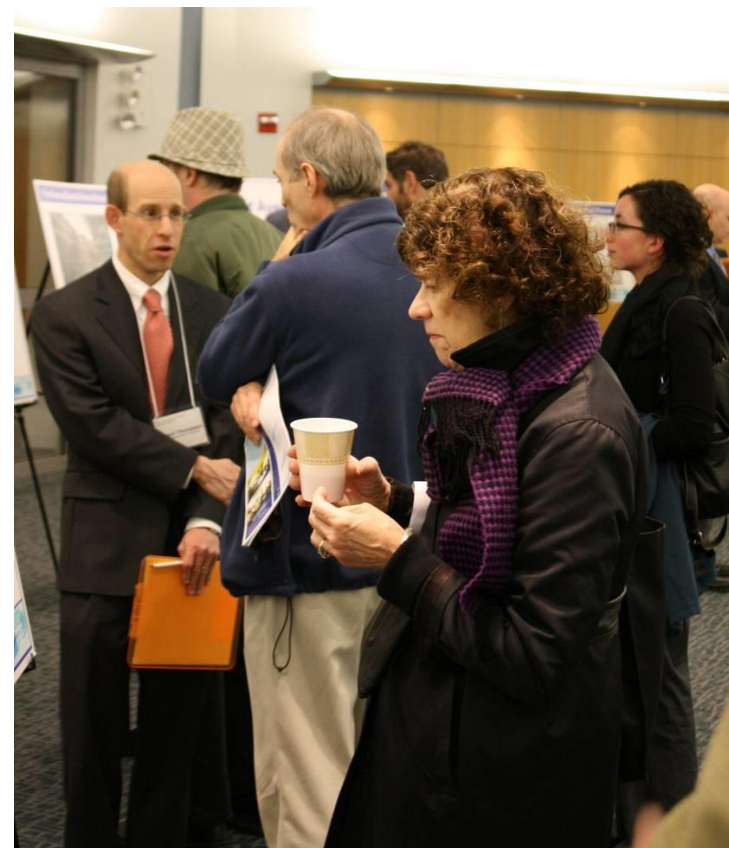
Bus and bike lanes to be rolled out throughout the next six months



2010 Public Outreach

December 2009	Community Board 1
February 2010	Community Boards 6, 11
March 2010	Community Boards 3, 8 Public Open Houses

Meetings with other area stakeholders throughout 2010



2010 Public Outreach

Outreach to businesses

Every storefront from Houston to 125th Street on both Avenues notified in person about the project

Field survey of the corridor identified businesses with potential delivery/loading concerns

99 businesses/institutions contacted to discuss loading patterns

Discussions still ongoing

+selectbusservice
first avenue/second avenue
Newsletter 1 / March 2010

SELECT BUS SERVICE IS COMING TO FIRST AVENUE/SECOND AVENUE

About the Corridor

- 8.5 miles from South Ferry to 125th Street
- Over 57,000 weekday riders on the M15
- Within 1/4 mile of the corridor:
 - 537,000 residents
 - 78% of households do not own a car
 - 57% of residents commute by transit

About Select Bus Service (SBS)

- Part of a citywide effort to improve service along major bus corridors
- Reduce travel time and improve reliability
- Make buses more attractive and easier to use

First Avenue/Second Avenue Corridor

FEATURES

Low-Floor, Three-Door Buses

Dedicated Bus Lanes

Bicycle Facilities and Pedestrian Improvements

Transit Signal Priority

Off-Board Fare Collection

MTA New York City Transit

NEW YORK CITY
DOT



New York City Transit

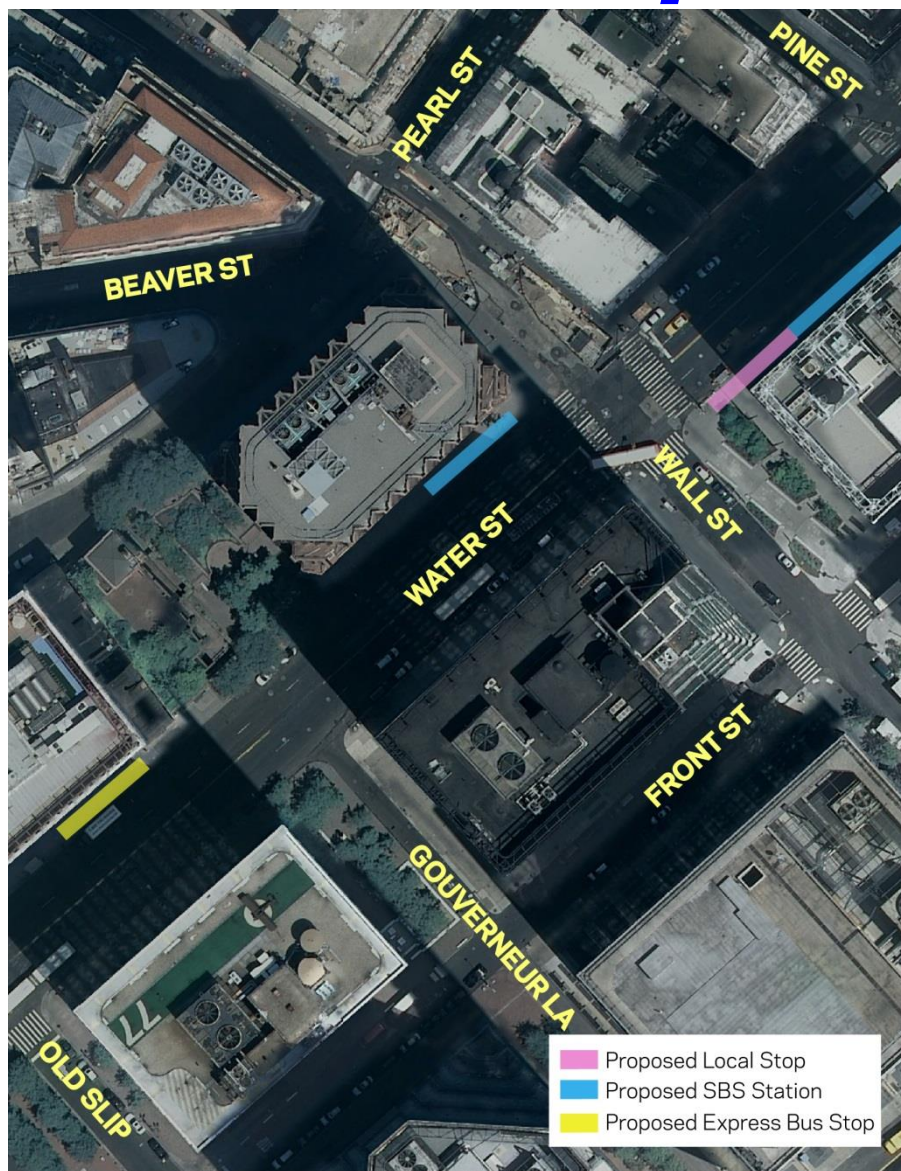
+selectbusservice
first avenue/**second** avenue



Station Locations Updates



Water Street/Wall Street



Northbound (no change)

SBS north of local between
Wall and Pine Streets

Southbound

SBS and local at far side of
Wall Street

Relocated to improve hotel
loading zone on Water Street



Grand Street/Allen Street



Northbound

SBS north of local between Hester and Grand Streets

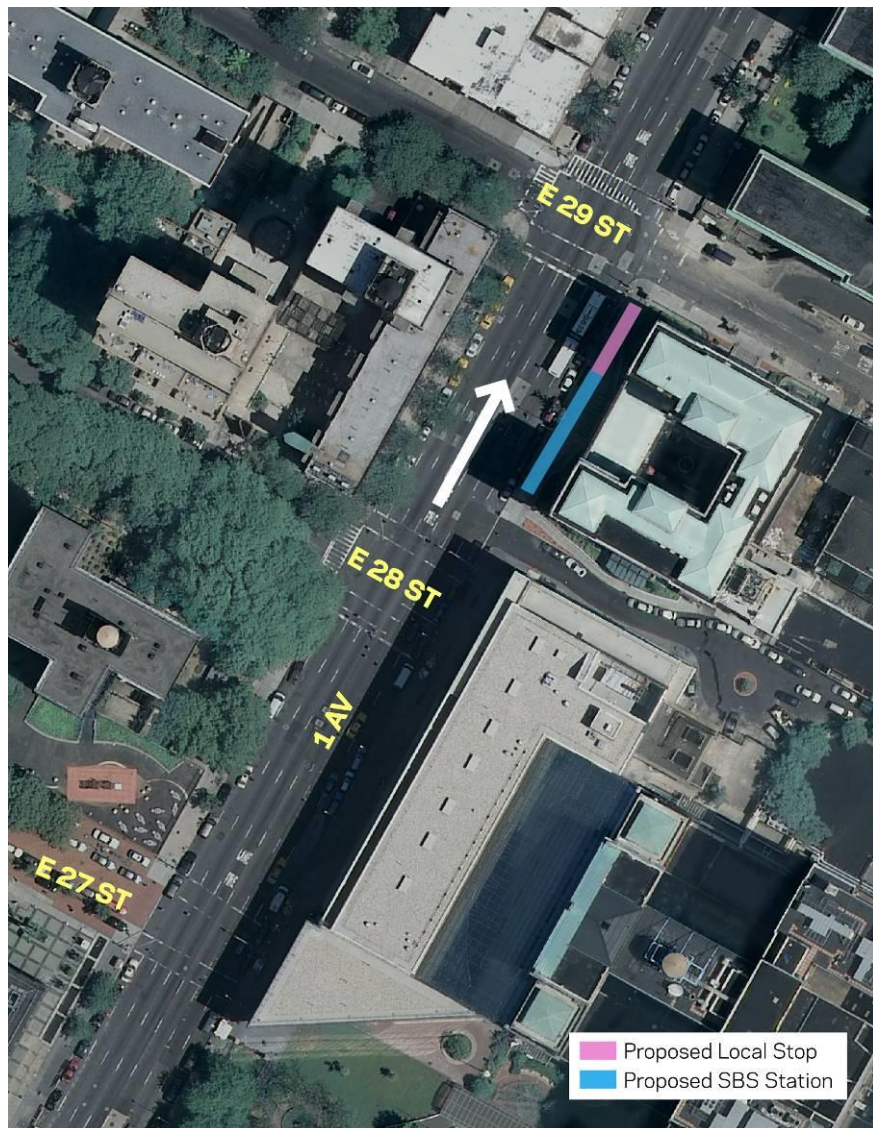
Southbound

SBS south of local between Hester and Grand Streets

Relocated to reduce conflicts with truck loading, bus activity on Allen Street



First Avenue/28th Street (Northbound)

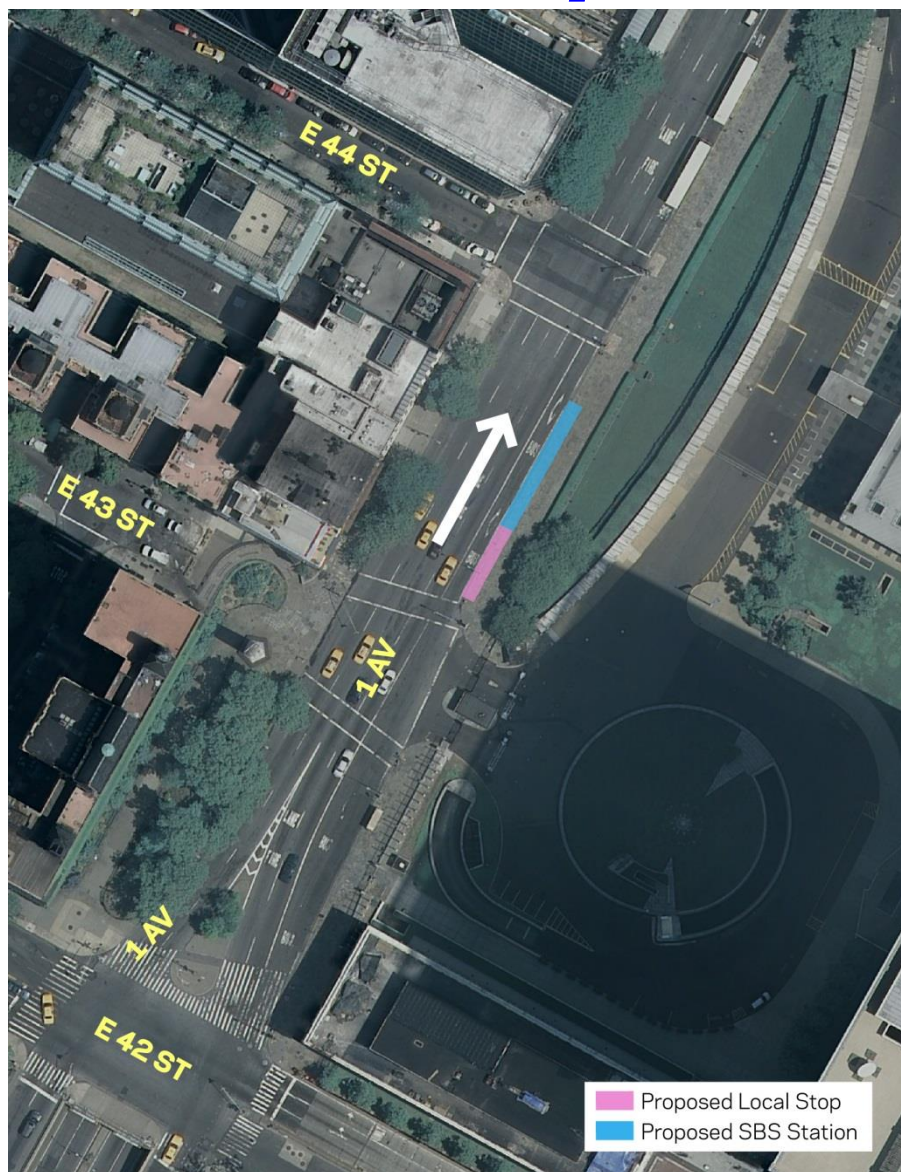


SBS north of local between
28th and 29th Streets

Added in response to analysis
of current ridership



First Avenue/42nd Street (Northbound)

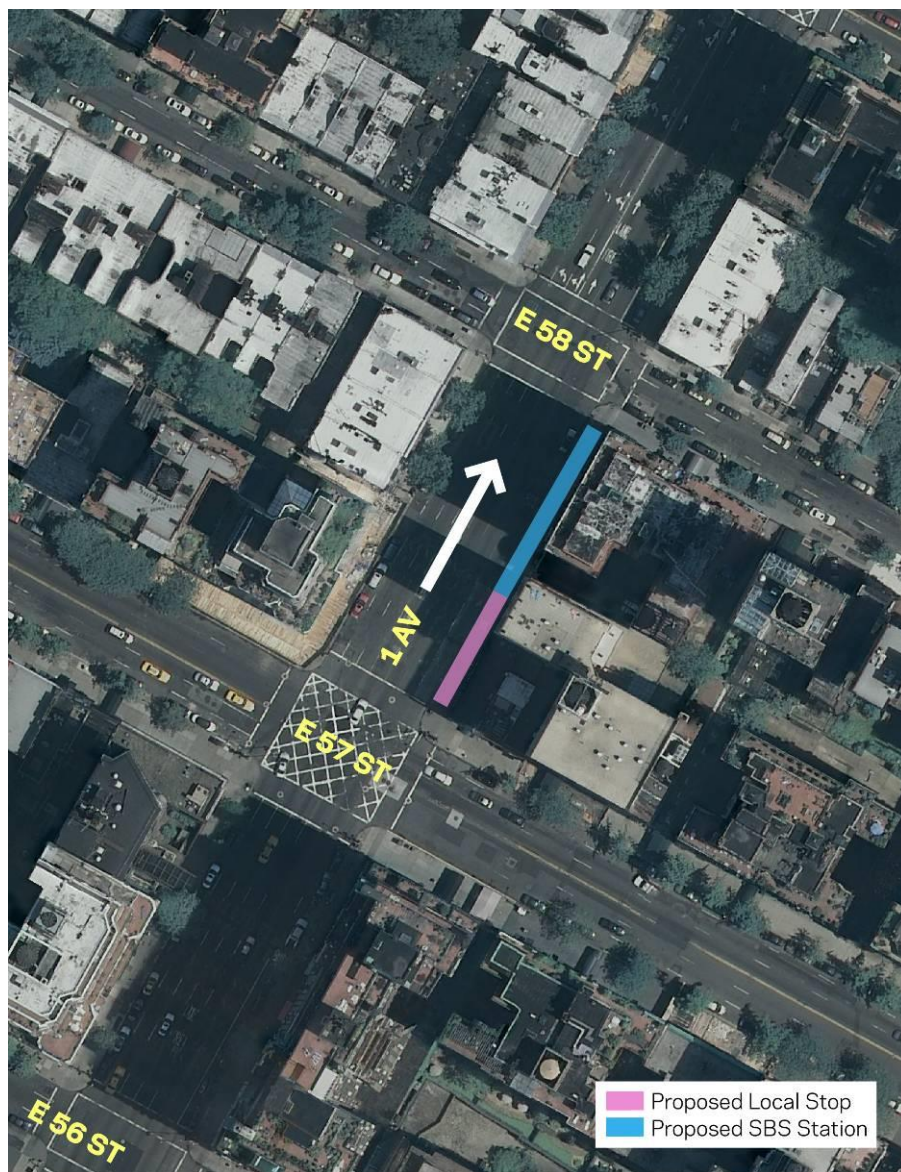


SBS north of local between
43rd and 44th Streets

Relocated to address United
Nations security concerns



57th Street/First Avenue (Northbound)



SBS north of local between
57th and 58th Streets

Relocated through
discussion with community
and elected officials to
reduce street tree impacts



116th Street/Second Avenue (Southbound)

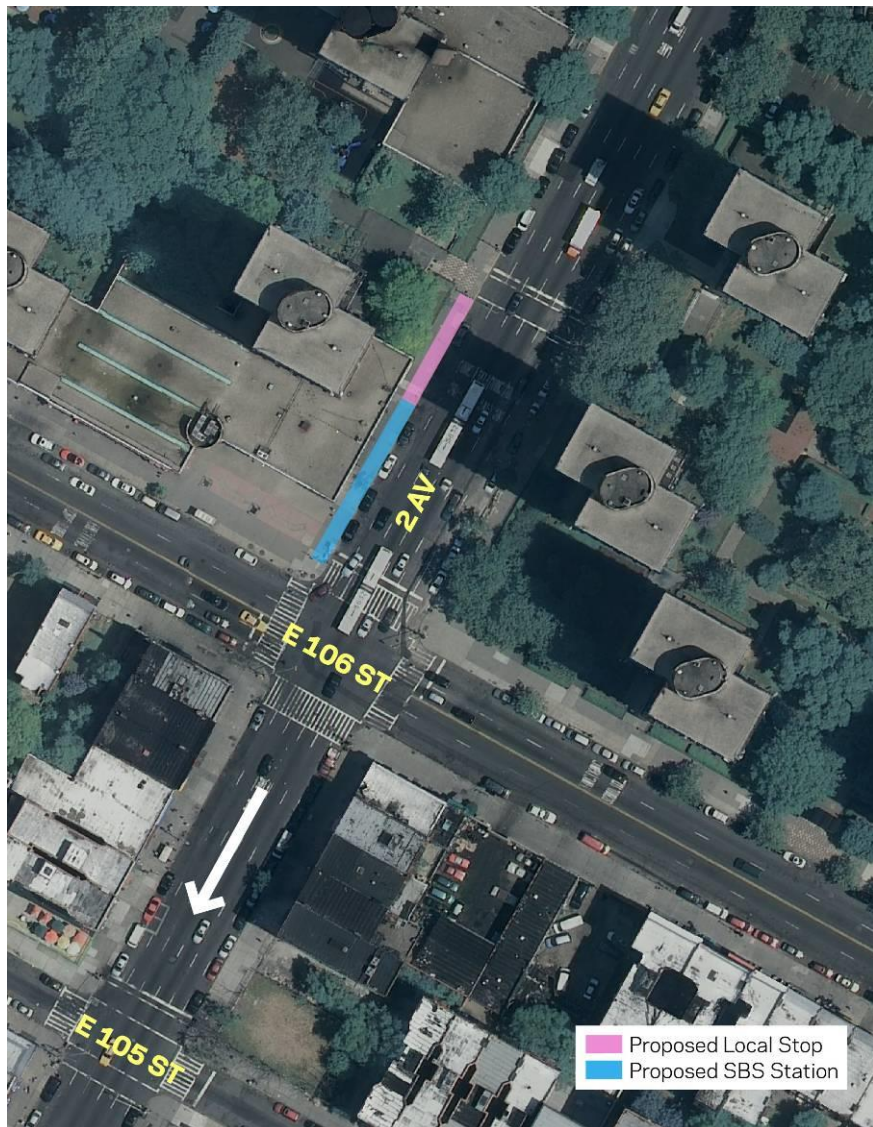


SBS south of local south of
115th Street

Relocated to add bus bulb
where street widens



106th Street/Second Avenue (Southbound)

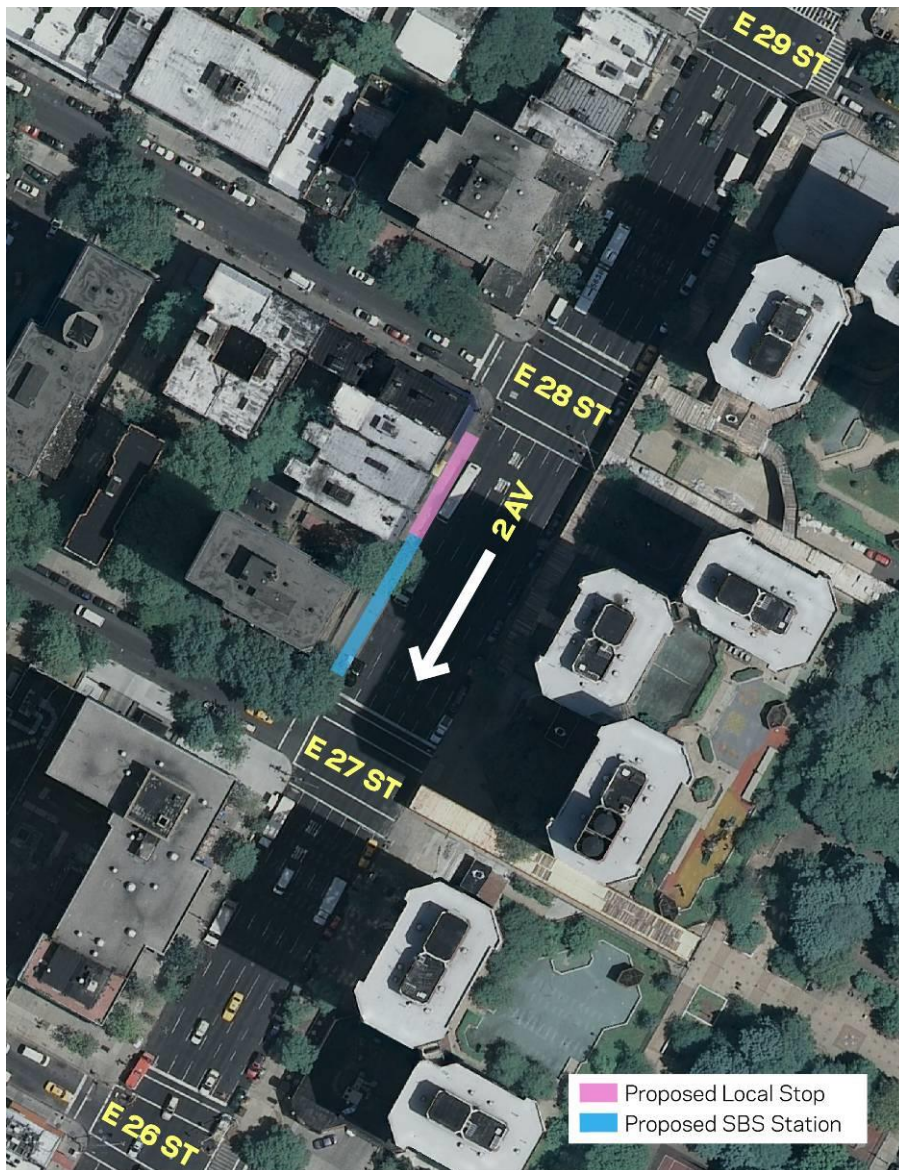


SBS south of local between
107th and 106th Streets

Relocated to add bus bulb
where street widens



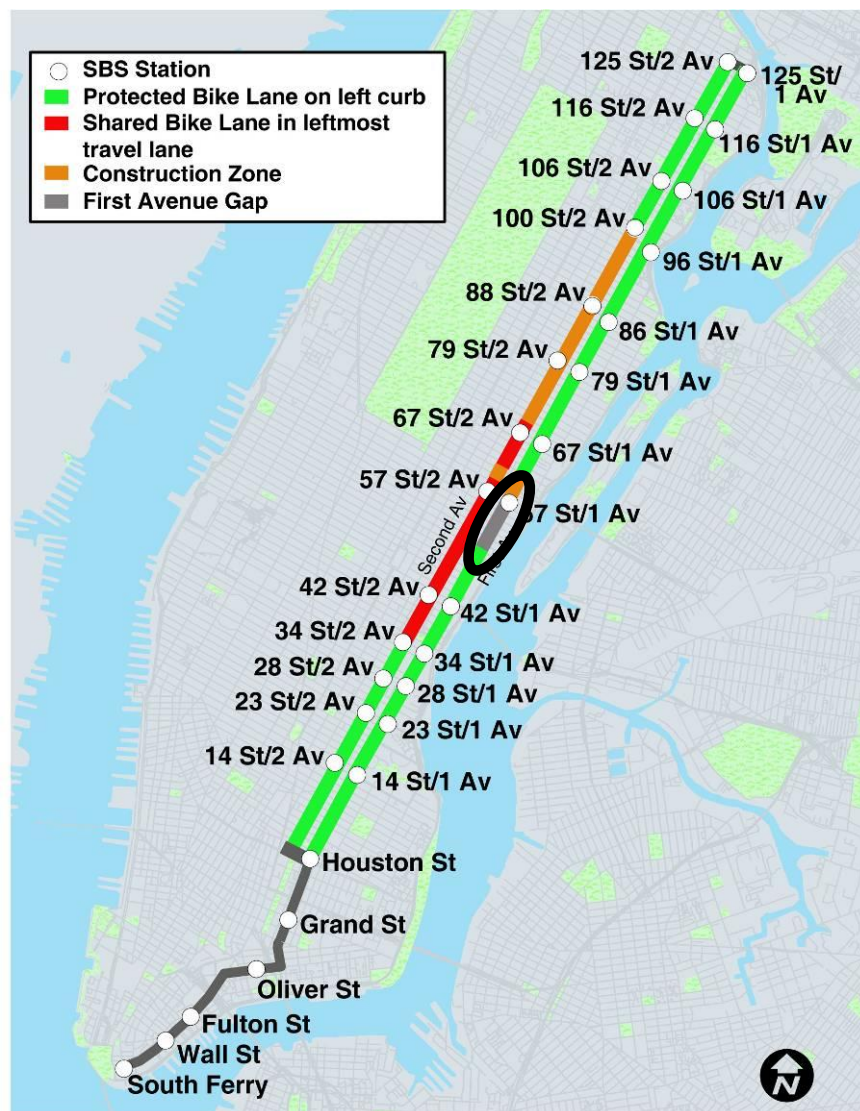
Second Avenue/28th Street (Southbound)



SBS south of local between
28th and 27th Streets

Added in response to analysis
of current ridership

First Avenue Bike Facility Improvement



Design C (with shared Class III bike lane) originally proposed between **49th** and **57th** Streets

Community requested an improved connection for cyclists



First Avenue Bike Facility Improvement



Curbside Bicycle Lane Proposal

Presented to CB6 in March 2010

Creates robust cycling facility on entire length of First Avenue

Enhances connection to Queensboro Bridge

Curbside loading already restricted

Summary of Changes

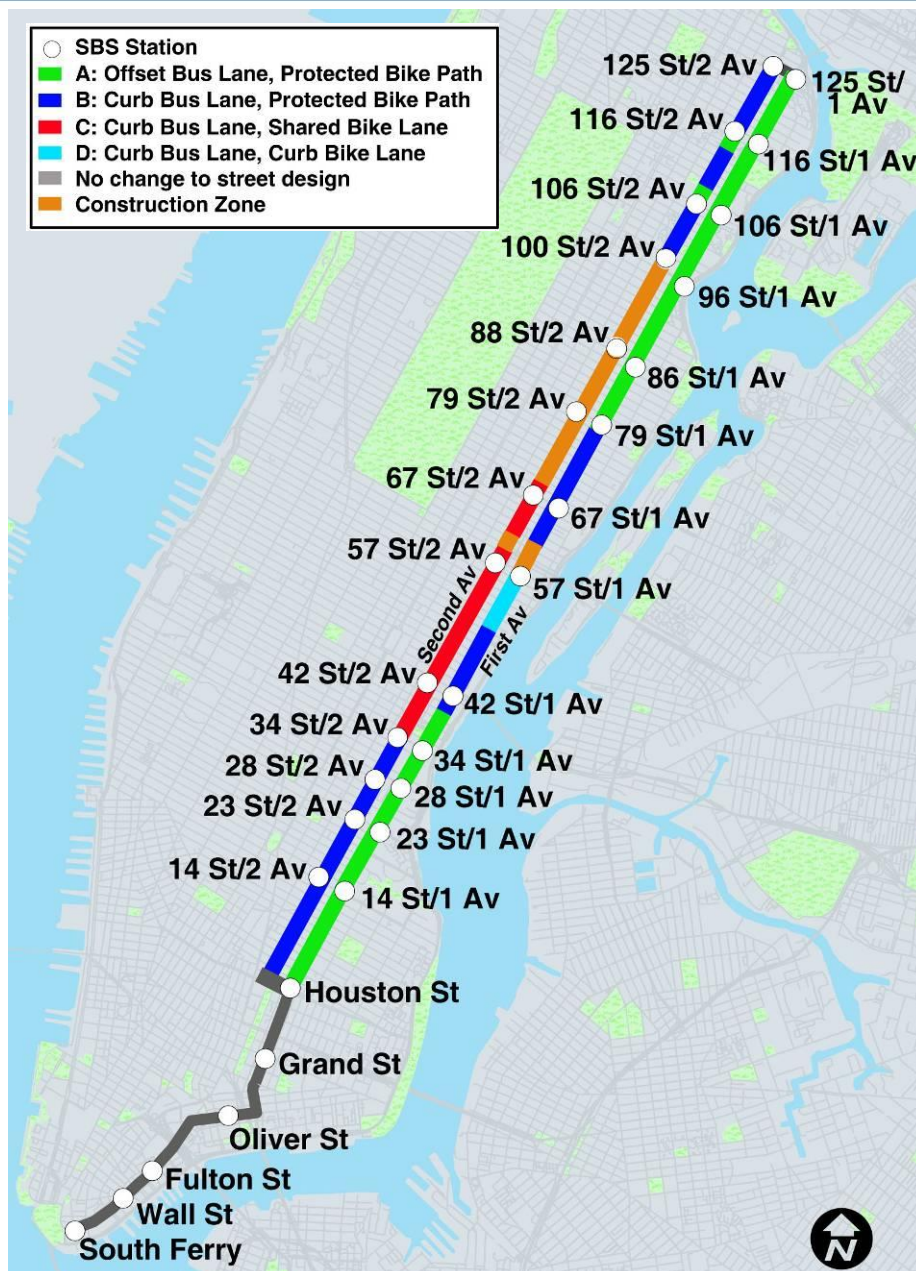
Added 28th Street stations

Proposed First Ave curb bike lane from 49th to 57th Streets

Added offset bus lane on Second Avenue in two sections:

115th to 113th Streets

108th to 106th Streets



Implementation Timeframe

Select Bus Service begins October 10, 2010

Features:

Off-Board Fare Collection

New low-floor, three-door buses

Improved bus lanes



Implementation Timeframe



Over the next 6 months

Street resurfacing

Lane markings and paint

Pedestrian refuge islands

Overhead signs

Shelters

On-street fare machines

Implementation Timeframe

Construction Sequencing

Working north from First Avenue
and Houston Street

- Milling
- Paving
- Lane Markings
- Bus and bike lane paint

Followed by:

Pedestrian refuge islands

Overhead signs

Bus Shelters

Fare Machines





New York City Transit

+selectbusservice
first avenue/second avenue



Parking Regulations



Bus Lane and Parking Regulations

Where bus lane is offset:

Bus lane in effect at all times

Curb lane parking regulations remain largely unchanged







Bus Lane and Parking Regulations

Where bus lane is at the curb:

Bus lane hours 7 am to 10 am, 2pm to 7pm

Metered commercial loading 10 am to 2 pm

Evening metered parking 7 pm to 10 pm

Open parking overnight





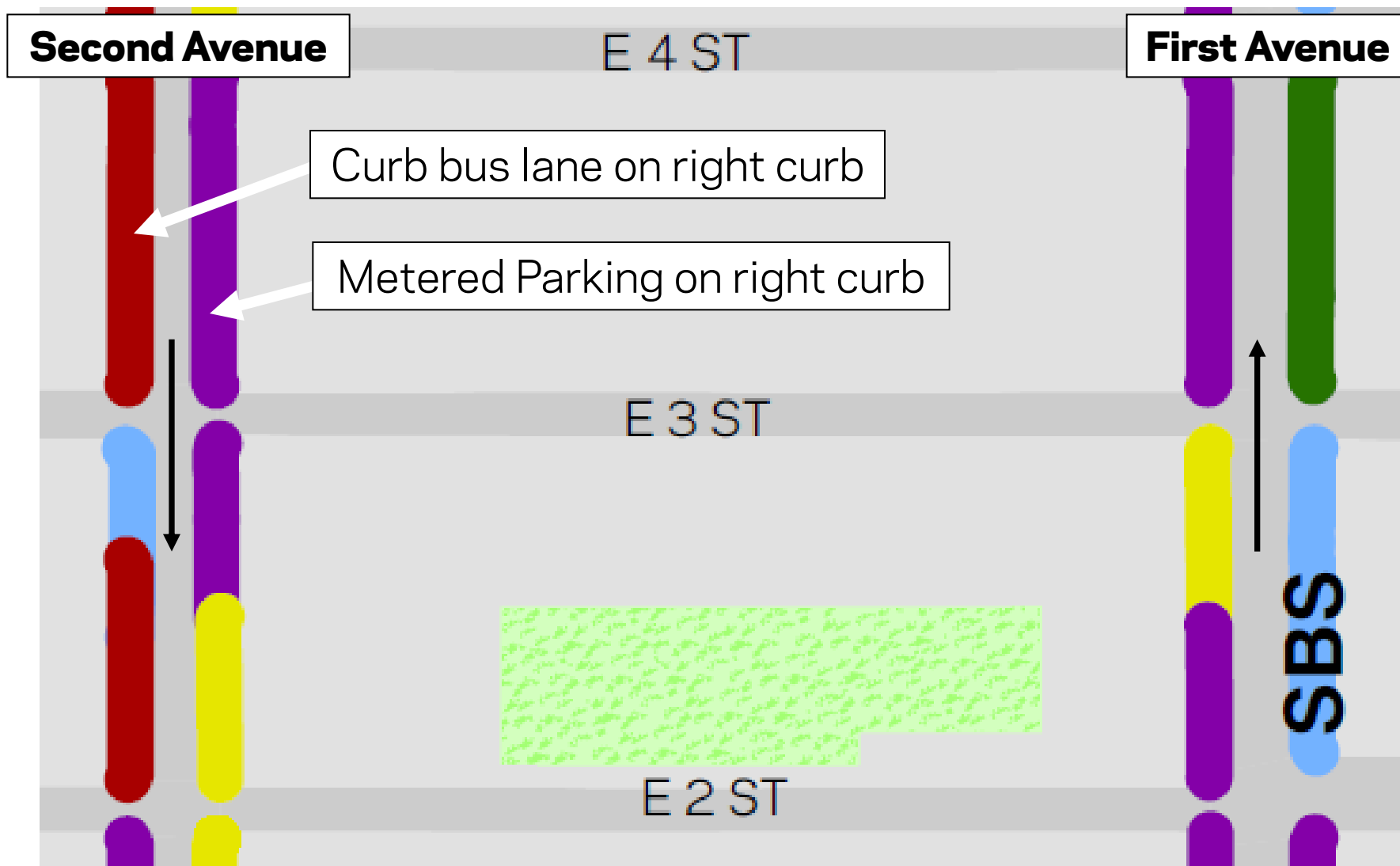
Bus Lane and Parking Regulations

Where bikes and cars share a lane:

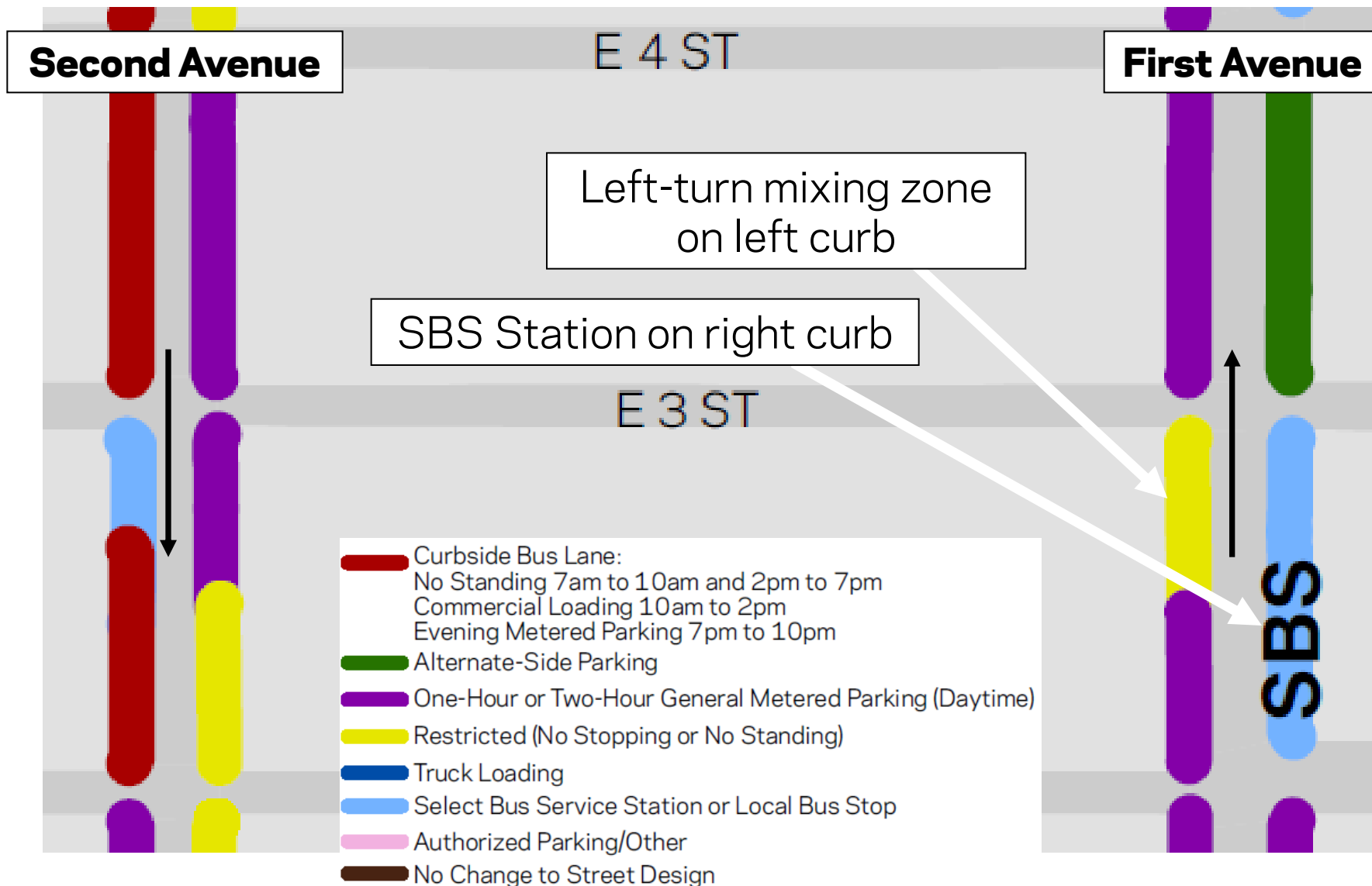
Parking regulations at the curb remain largely unchanged



Parking Regulations Maps



Parking Regulations Maps





Next Steps

Street resurfacing begins next month on First Avenue

Ongoing outreach to area stakeholders

Project information at www.nyc.gov/brt

CAC #5 – Mid-summer 2010

Open House #2 – September 2010