

**34th Street SBS
Presentation to Manhattan CB 6
Transportation Committee**

May 7, 2012

Agenda

- I. Project Update
- II. Loading Zone Curb Regulations Options
- III. Project Schedule Update

Project Update

- **Since last fall, DOT & NYCT have ...**
 - Implemented off-board fare collection
 - Completed environmental review
 - Released the Project Analysis Report
 - Initiated design work of the project
- **In the coming months, DOT & NYCT will ...**
 - Finalize the implementation schedule
 - Complete design of the project
 - Begin construction

Off Board Fare Collection

- Travel times reduced by 10%
- Ridership of 20,200 recorded on 3/15
- Time savings used to add service
- In April, NYCT increased frequency:
 - 24 more weekday trips
 - 24 more Saturday trips
 - 12 more Sundays trips
- No additional cost to the MTA



MTA Bus Time

- Real time bus location information system
- Implemented on M34, with expansion citywide
- Information via: web, text, and smart phone
- Replaces Clever Devices 34th St. pilot project

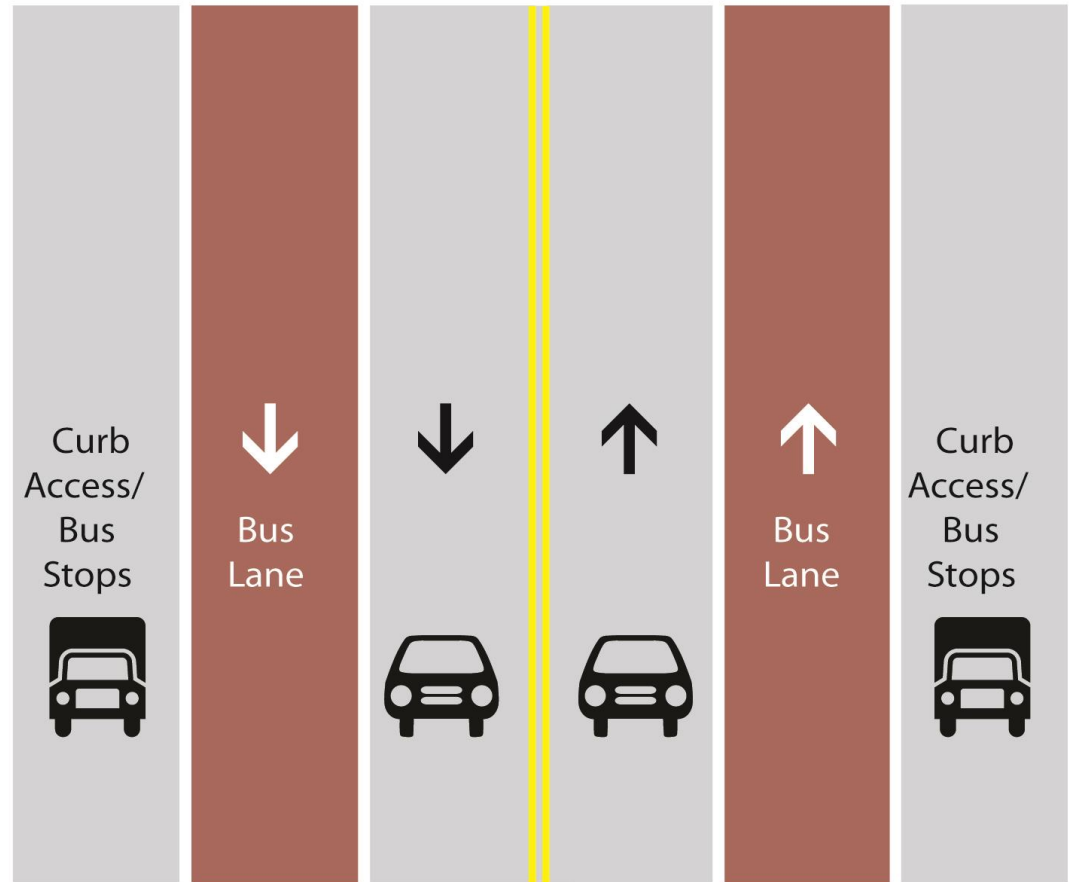
The screenshot displays the MTA Bus Time website interface. At the top, there are navigation tabs: Home, Schedules, Fares & Tolls, Maps, Planned Service Changes, About the MTA, Doing Business With Us, and Transparency. Below the navigation is the MTA Bus Time logo and a search bar containing 'M34-SBS'. A search tip reads: 'TIP: Enter an intersection, bus route or bus stop code.' Underneath, the route is identified as 'M34-SBS 34th St Select Bus Service Javits - Ferry'. Two destination options are listed: 'to SELECT BUS SERVICE Eastside - FDR DR' and 'to SELECT BUS SERVICE JAVITS CTR - 12 AV'. The main content area is a map of Manhattan showing a blue route line with bus icons. A callout box on the map indicates 'Vehicle 3818 to SELECT BUS SERVICE Eastside - FDR DR'. The map includes street names, landmarks like Central Park, and a 'Show Subway' button in the top right corner. The bottom of the map shows 'Map data ©2012 Google, Sanborn - Terms of Use'.

34th St SBS

Curb Regulation Options for Loading Zones

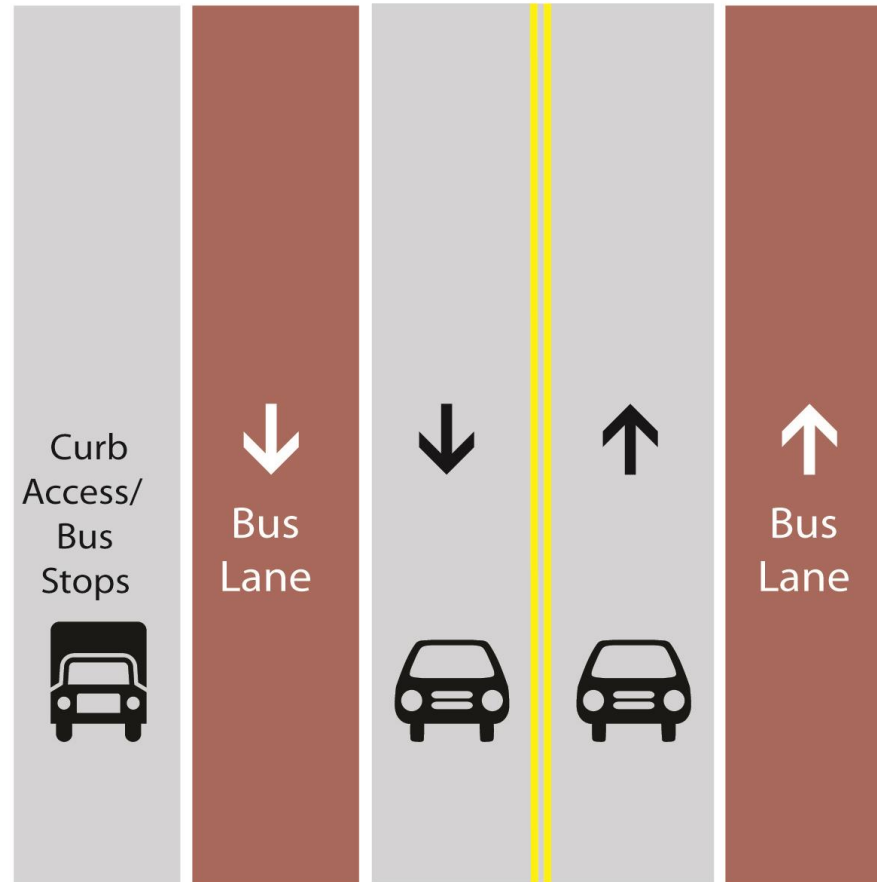
34th St SBS Design: Overview

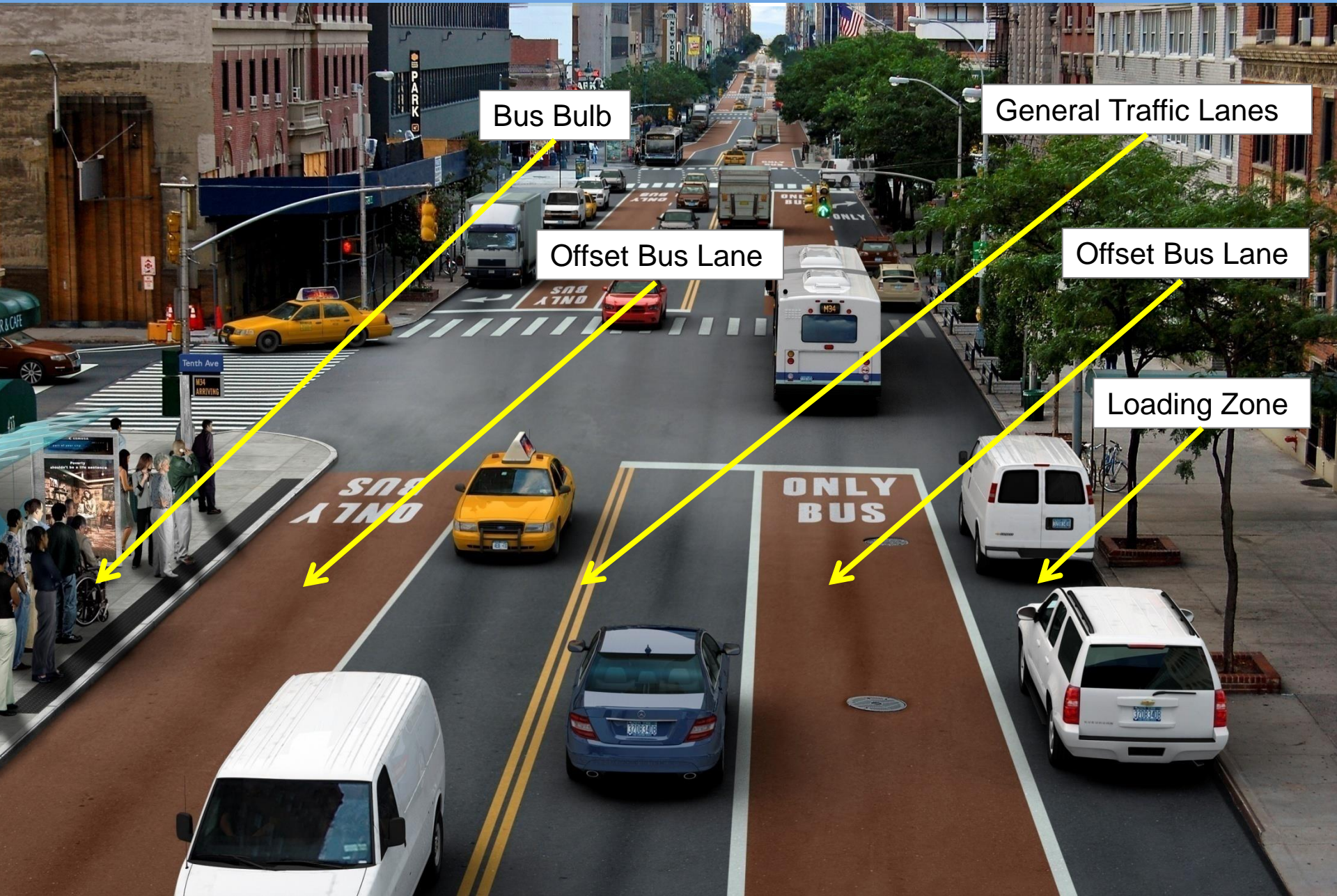
60 ft wide section:
East of Third Ave
West of Ninth Ave



34th St SBS Design: Overview

52 ft wide section:
Third Ave to
Ninth Ave





Bus Bulb

General Traffic Lanes

Offset Bus Lane

Offset Bus Lane

Loading Zone

Loading Zone Goals

- What we have heard from the community:
 - Provide loading access to residential buildings, including day times
 - Provide loading access to stores and commercial spaces, including day times
 - Accommodate needs of special institutions, i.e. medical facilities
 - Parking is a low priority

Curb Regulation Toolbox: No Stopping

- **Rules:**
 - Vehicles may not stop at this location at any time.
 - You may not wait, stop to load/unload packages or merchandise, or drop off or pick up passengers.



Curb Regulation Toolbox: No Standing

- **Rules:**
 - Stopping to expeditiously drop off or pick up passengers allowed
 - No loading or unloading of packages or merchandise
 - No parking



Curb Regulation Tool Box: No Parking

- **Rules:**
 - Stopping to expeditiously drop off or pick up passengers allowed
 - Loading or unloading of packages or merchandise allowed
 - No parking



Curb Regulation Tool Box: Commercial Loading Zones

- **Rules:**
 - No standing regulations apply to all non-commercial vehicles
 - Commercial vehicles can load and unload goods
 - Typically paid parking in Midtown Manhattan
 - Specified parking period can be as short as 1 hour to encourage turn over



Curb Regulation Tool Box: Special Zones

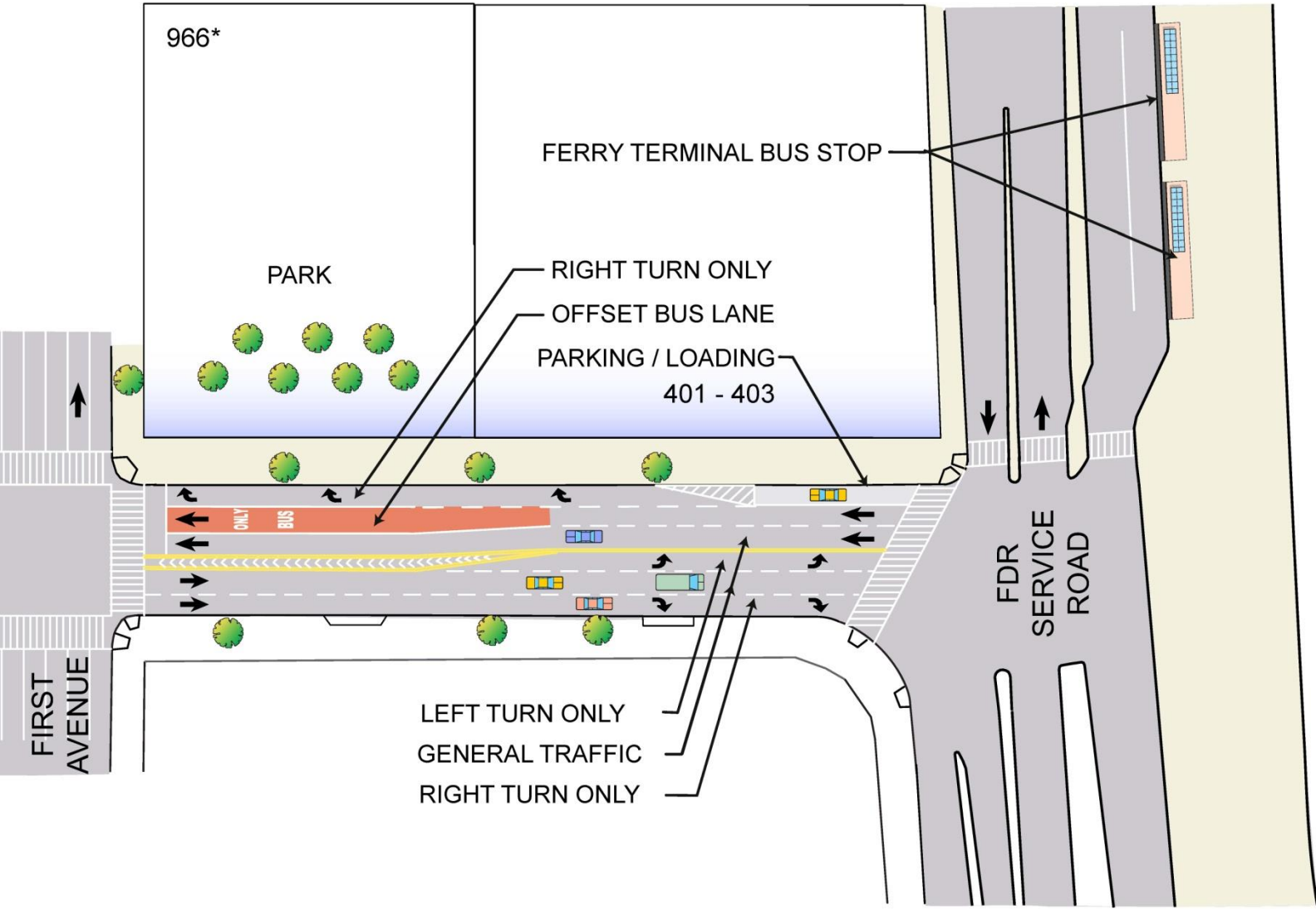
- **Examples:**
 - Hotels: Hotel Loading Zone
 - Medical facilities: No Standing Except Ambulettes or Passenger Pick Up and Drop Off
 - Houses of Worship: No Parking

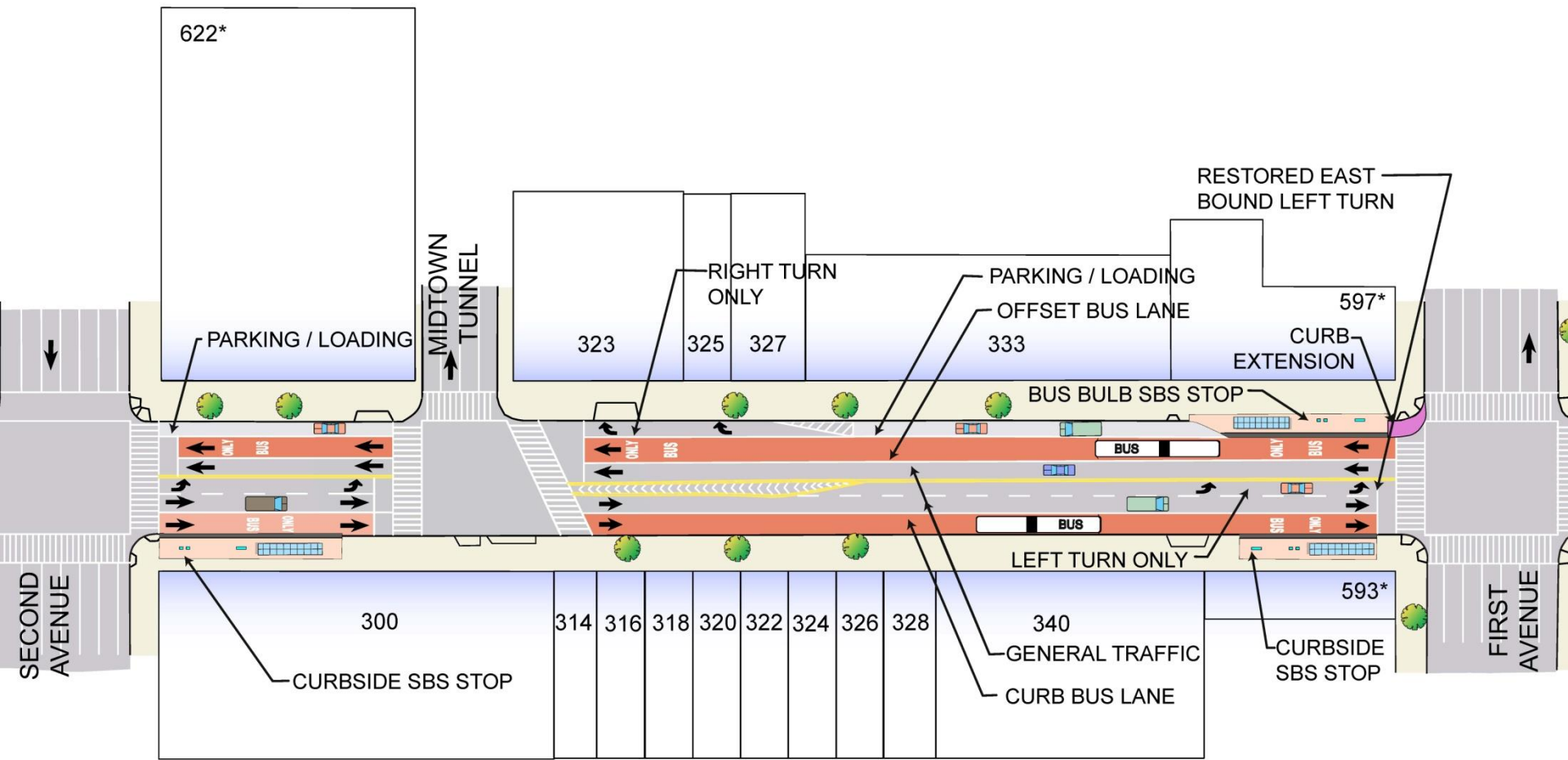


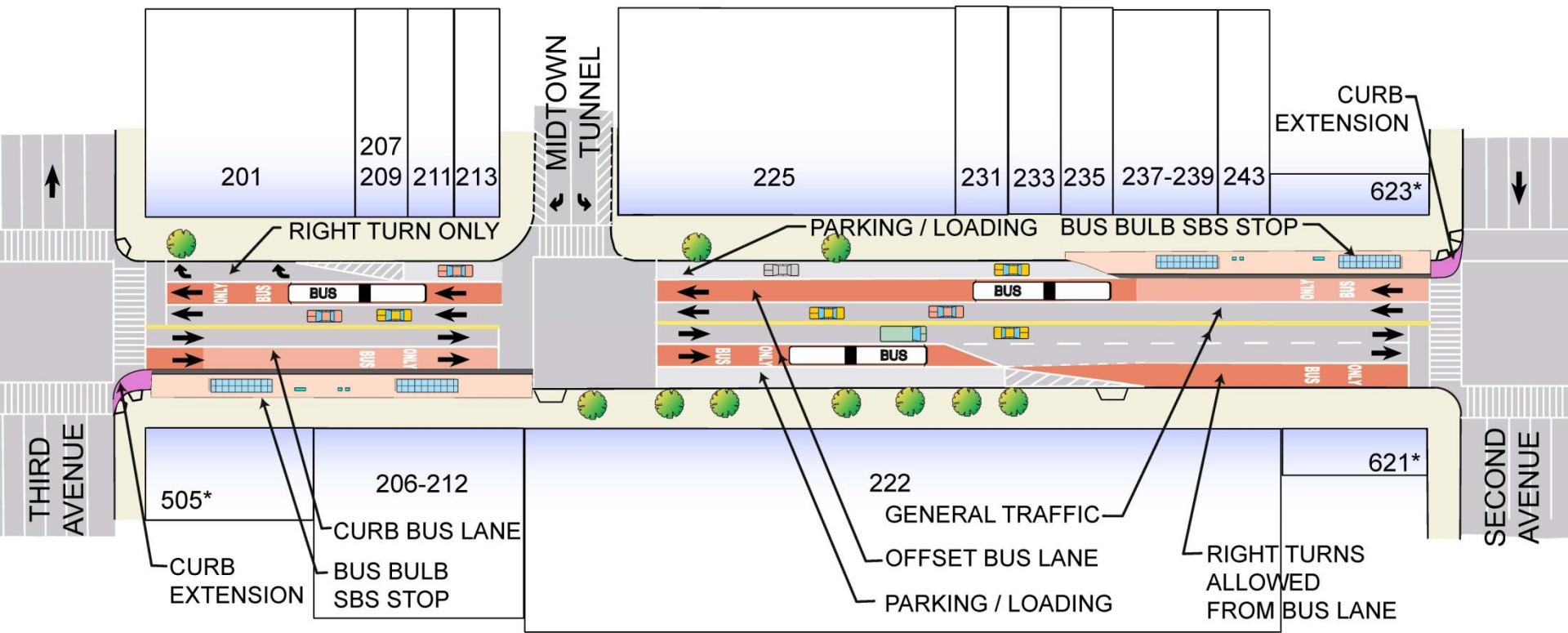
Curb Regulation Tool Box: Time of Day Variations

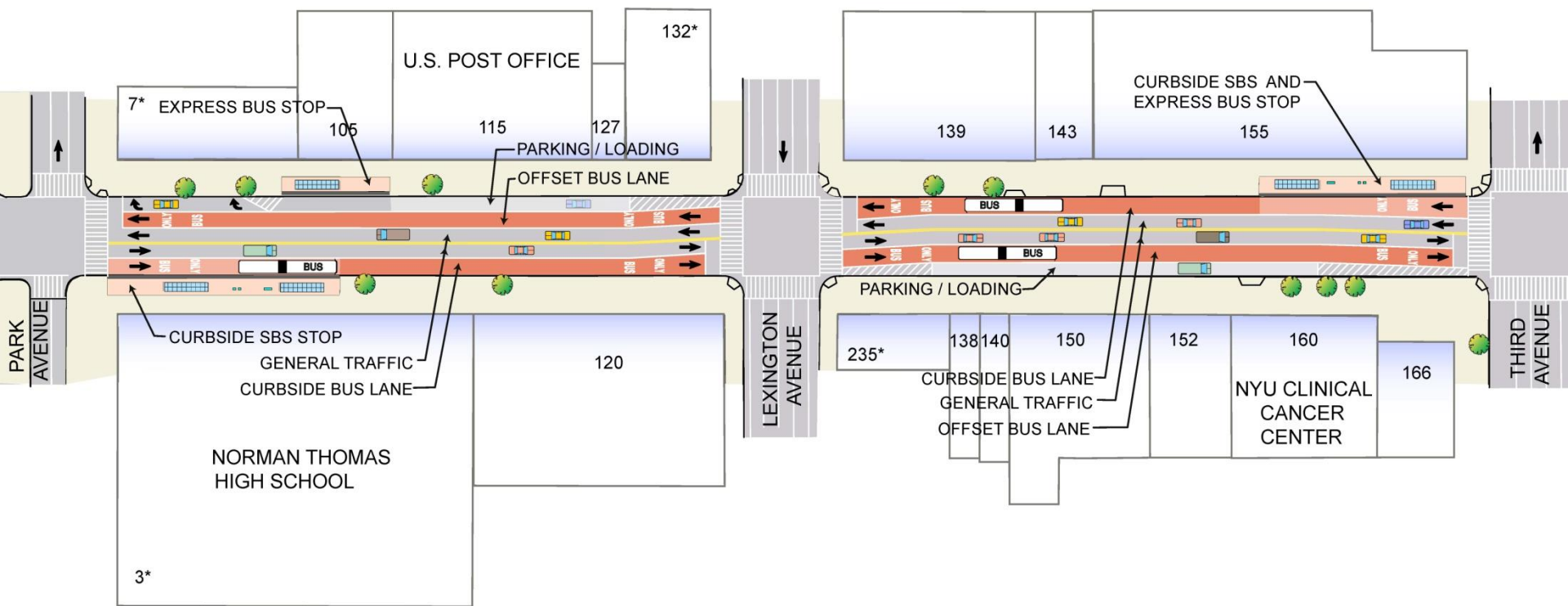
- **Peak Period Regulations:**
 - 7 AM-7 PM
 - 7-10 AM
 - 4-7 PM
- **Night Regulations:**
 - 7 PM-7 AM
 - Midnight-7 AM
- **Day of Week Regulations:**
 - Weekdays only
 - Weekends/Sundays only











34th St SBS Schedule Update

34th Street SBS: Phasing



West Section – Hudson Yards Development Corporation



Middle Section – City of New York with New York City Transit



East Section – City of New York



Construction Schedule: West Section

- **Details**

- Section is part of Hudson Park and Boulevard Project
- Construction by Hudson Yards Development Corporation
- Elements: bus lanes, loading zones, and 2 bus bulbs

- **Schedule**

- Construction start: June 2012
- Construction completion: July 2013



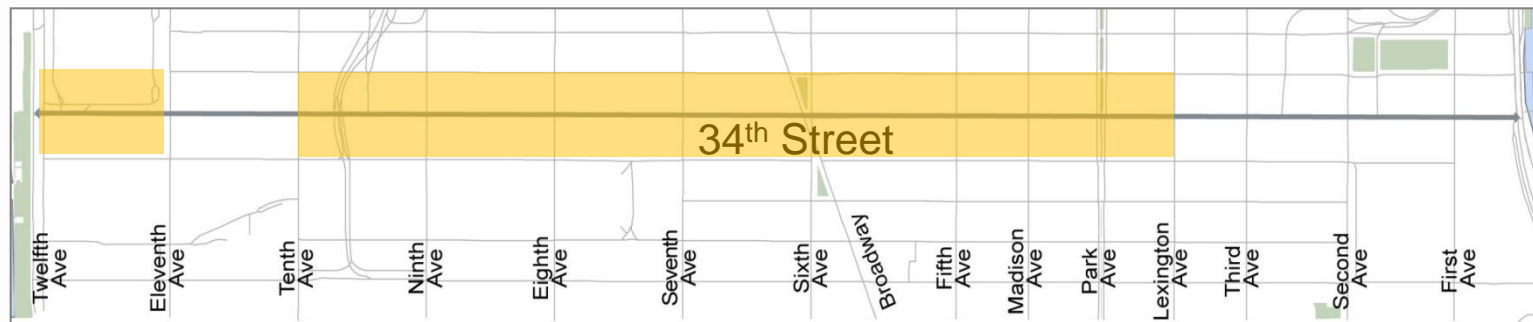
Construction Schedule: Middle Section

- **Details**

- Section will be constructed by City of New York with New York City Transit
- Elements: bus lanes, loading zones, and 9 bus bulbs

- **Schedule**

- Construction start: August 2012
- Construction completion: April 2013



City Roadwork Policy

- City policy: agencies must coordinate subsurface utility work and roadway work
- Planned utility work must happen **before** any roadway improvements built
- For 34th St. DOT coordinated with: DEP, other city agencies, and private utilities



New York City Water Tunnel No. 3

- Major capital project to improve the NYC water system
- Includes upgrades to neighborhood water distribution systems
- City DEP plans to replace water main bet. Third Ave. to First Ave on 34th St.
- Work will be done prior to construction of 34th St. SBS for this segment
- Schedule implications for 34th St. SBS



Construction Schedule: East Section

- **Details**

- Section will be constructed by City of New York
- DEP elements: replacement water main and sewer line
- DOT elements: bus lanes, loading zones, and 3 bus bulbs

- **Schedule**

- Construction start: summer 2013
- Construction completion: fall 2014



Thank You