

**34<sup>th</sup> Street SBS  
Presentation to Manhattan CB 4  
Transportation Committee**

**April 18, 2012**

# Agenda

- I. Project Update
- II. Loading Zone Curb Regulations Options
- III. Project Schedule Update

# Project Update

- **Since last fall, DOT & NYCT have ...**
  - Implemented off-board fare collection
  - Completed environmental review
  - Released the Project Analysis Report
  - Initiated design work of the project
- **In the coming months, DOT & NYCT will ...**
  - Finalize the implementation schedule
  - Complete design of the project
  - Begin construction

# Off Board Fare Collection

- Travel times reduced by 10%
- Ridership of 20,200 recorded on 3/15
- Time savings used to add service
- In April, NYCT increased frequency:
  - 24 more weekday trips
  - 24 more Saturday trips
  - 12 more Sundays trips
- No additional cost to the MTA



# MTA Bus Time

- Real time bus location information system
- Implemented on M34, with expansion citywide
- Information via: web, text, and smart phone
- Replaces Clever Devices 34<sup>th</sup> St. pilot project

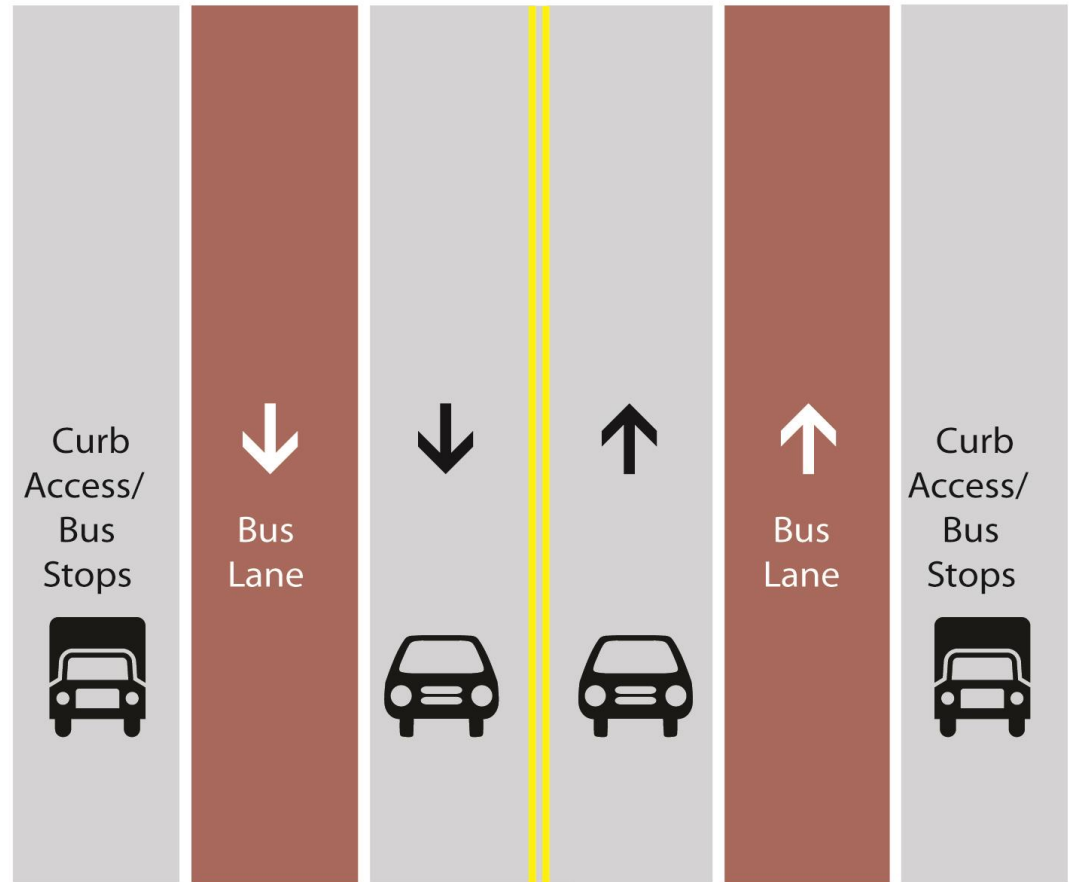
The screenshot displays the MTA Bus Time website interface. At the top, there are navigation tabs: Home, Schedules, Fares & Tolls, Maps, Planned Service Changes, About the MTA, Doing Business With Us, and Transparency. Below the navigation is the MTA Bus Time logo and a search bar containing 'M34-SBS'. A search tip reads: 'TIP: Enter an intersection, bus route or bus stop code.' Underneath, the selected route is 'M34-SBS 34th St Select Bus Service Javits - Ferry'. Two destination options are listed: 'to SELECT BUS SERVICE Eastside - FDR DR' and 'to SELECT BUS SERVICE JAVITS CTR - 12 AV'. The main content area is a map of Manhattan showing a blue route line with bus icons. A callout box on the map indicates 'Vehicle 3818 to SELECT BUS SERVICE Eastside - FDR DR'. The map includes street names, landmarks like Central Park, and a 'Show Subway' button in the top right corner.

# **34<sup>th</sup> St SBS**

## **Curb Regulation Options for Loading Zones**

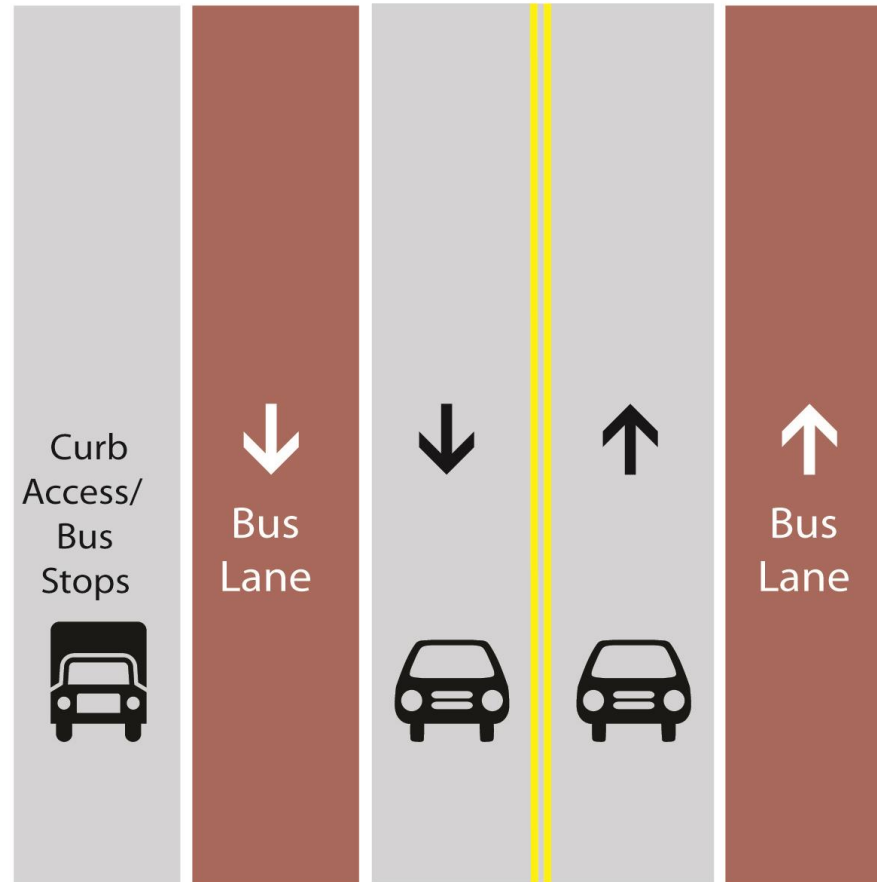
# 34<sup>th</sup> St SBS Design: Overview

60 ft wide section:  
East of Third Ave  
West of Ninth Ave

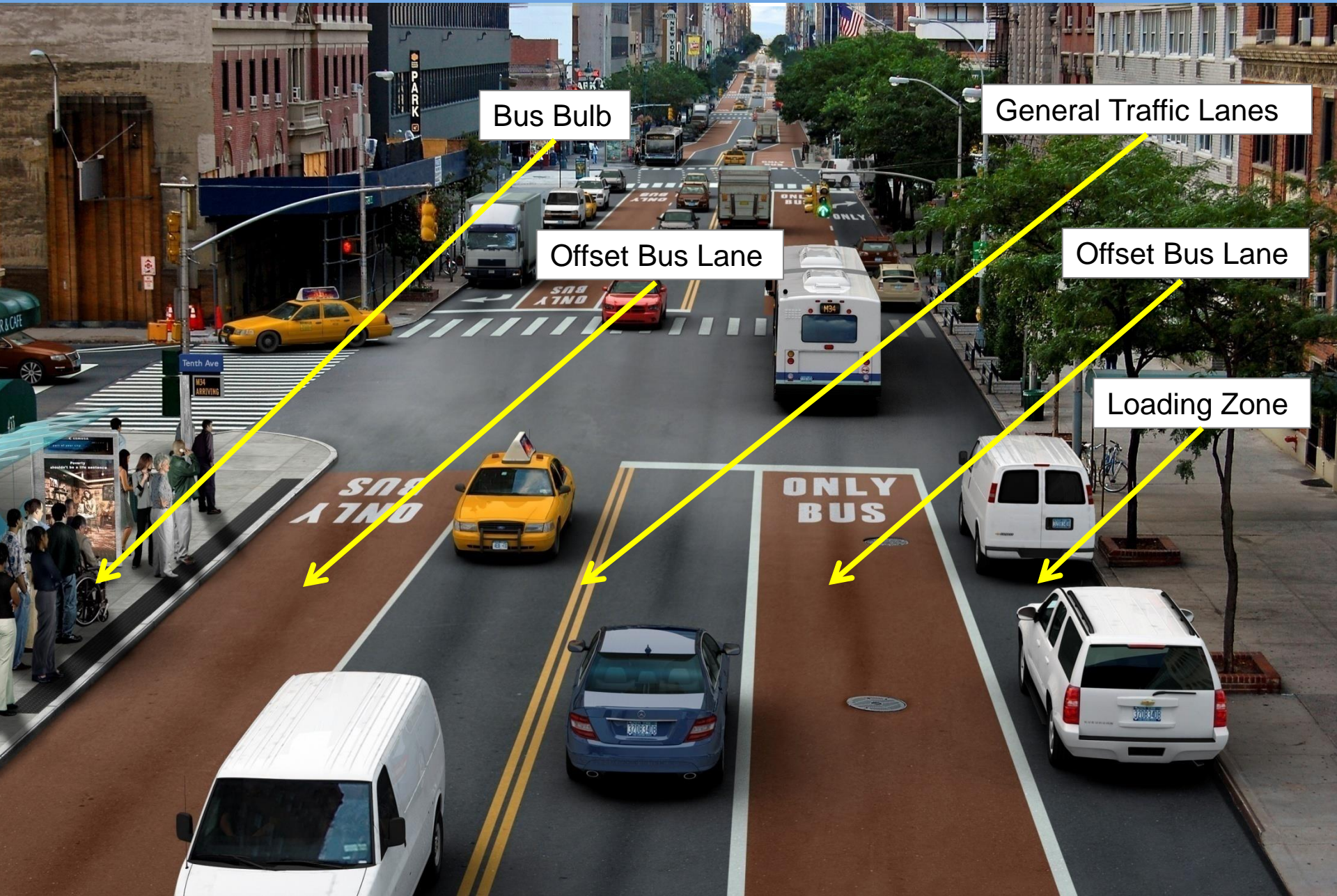


# 34<sup>th</sup> St SBS Design: Overview

52 ft wide section:  
Third Ave to  
Ninth Ave







Bus Bulb

General Traffic Lanes

Offset Bus Lane

Offset Bus Lane

Loading Zone

# Loading Zone Goals

- What we have heard from the community:
  - Provide loading access to residential buildings, including day times
  - Provide loading access to stores and commercial spaces, including day times
  - Accommodate needs of special institutions, i.e. medical facilities
  - Parking is a low priority

# Curb Regulation Toolbox: No Stopping

- **Rules:**
  - Vehicles may not stop at this location at any time.
  - You may not wait, stop to load/unload packages or merchandise, or drop off or pick up passengers.



# Curb Regulation Toolbox: No Standing

- **Rules:**
  - Stopping to expeditiously drop off or pick up passengers allowed
  - No loading or unloading of packages or merchandise
  - No parking



# Curb Regulation Tool Box: No Parking

- **Rules:**
  - Stopping to expeditiously drop off or pick up passengers allowed
  - Loading or unloading of packages or merchandise allowed
  - No parking



# Curb Regulation Tool Box: Commercial Loading Zones

- **Rules:**
  - No standing regulations apply to all non-commercial vehicles
  - Commercial vehicles can load and unload goods
  - Typically paid parking in Midtown Manhattan
  - Specified parking period can be as short as 1 hour to encourage turn over



# Curb Regulation Tool Box: Special Zones

- **Examples:**
  - Hotels: Hotel Loading Zone
  - Medical facilities: No Standing Except Ambulettes or Passenger Pick Up and Drop Off
  - Houses of Worship: No Parking

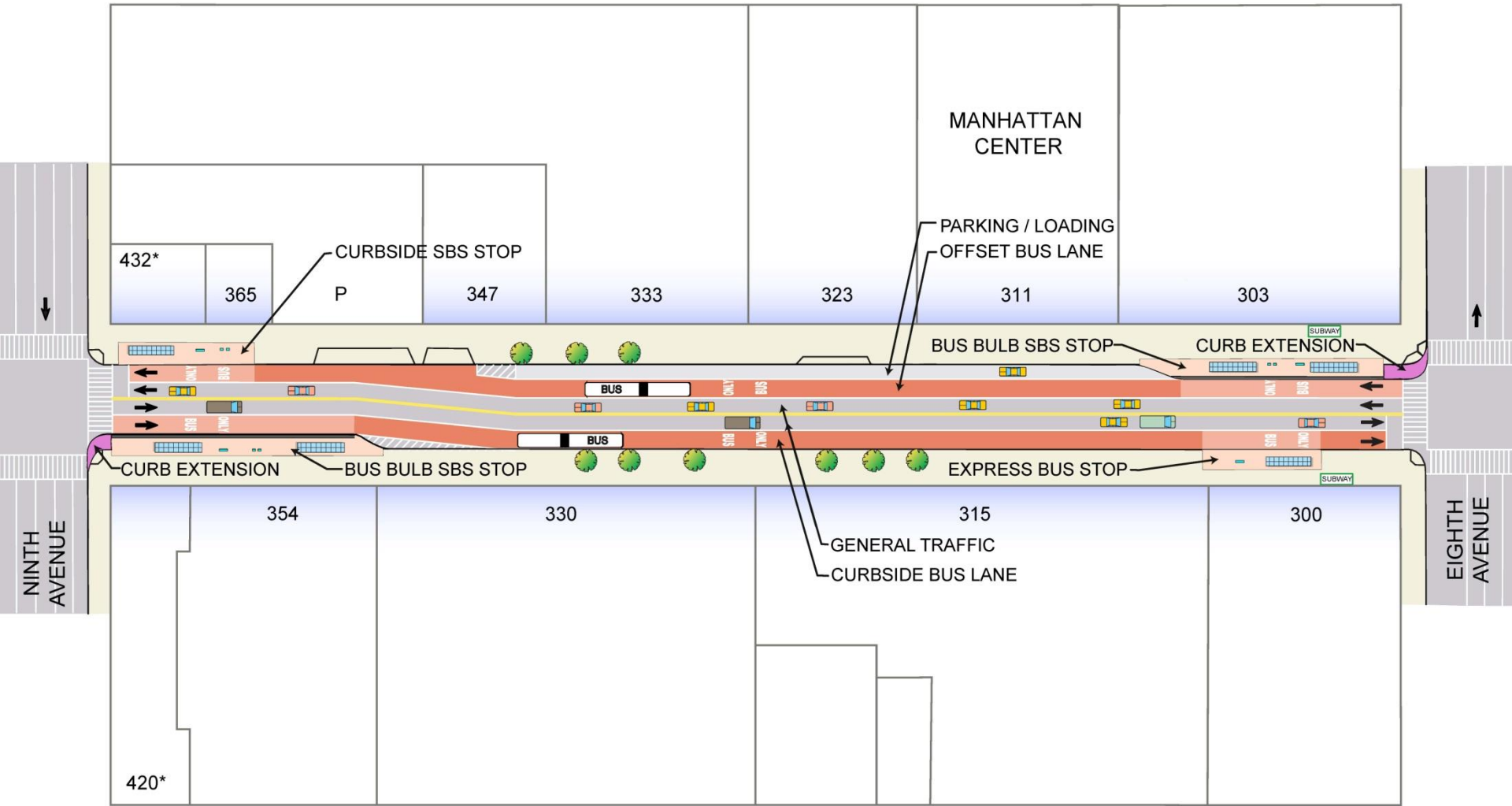


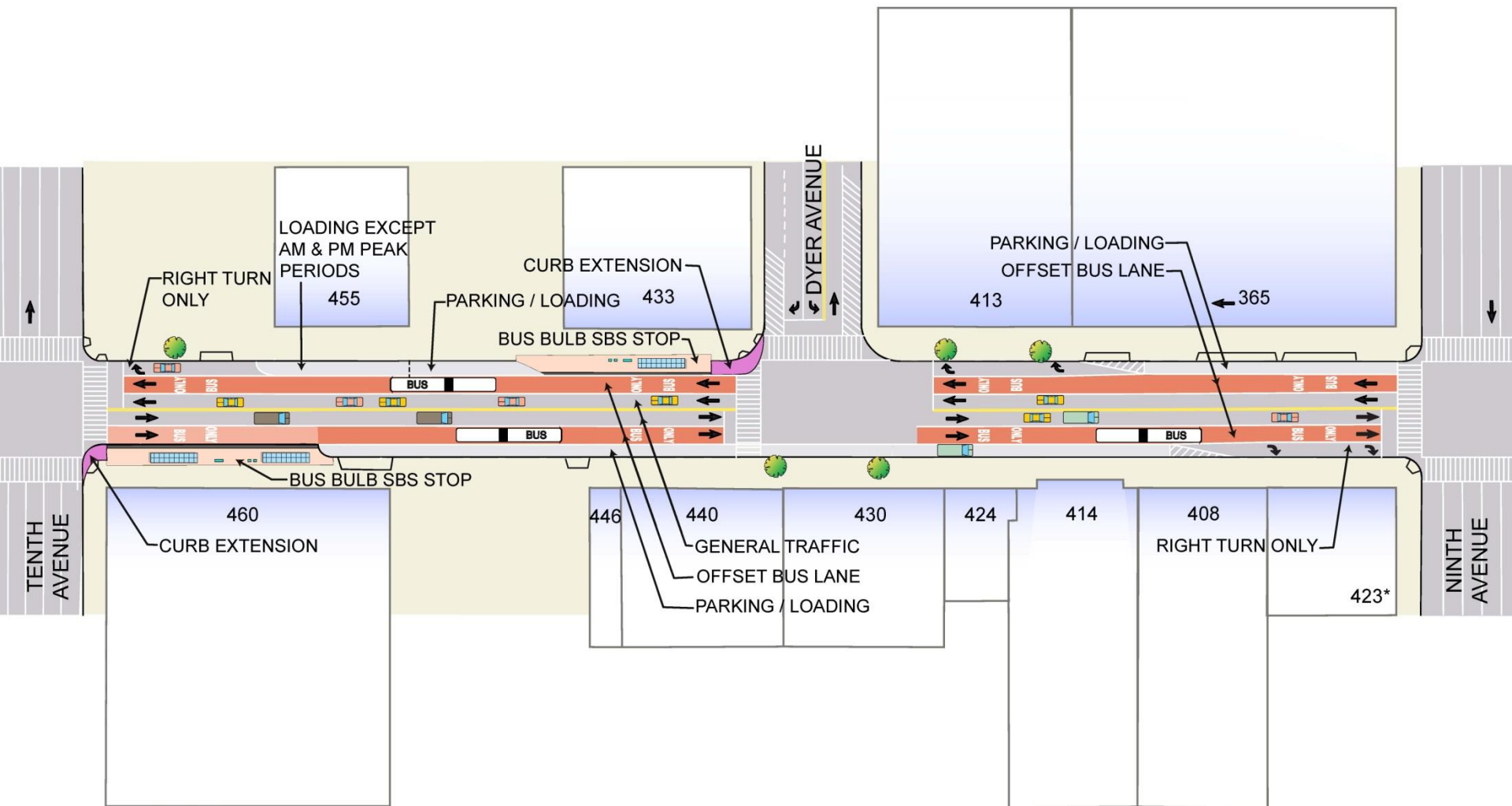
# Curb Regulation Tool Box: Time of Day Variations

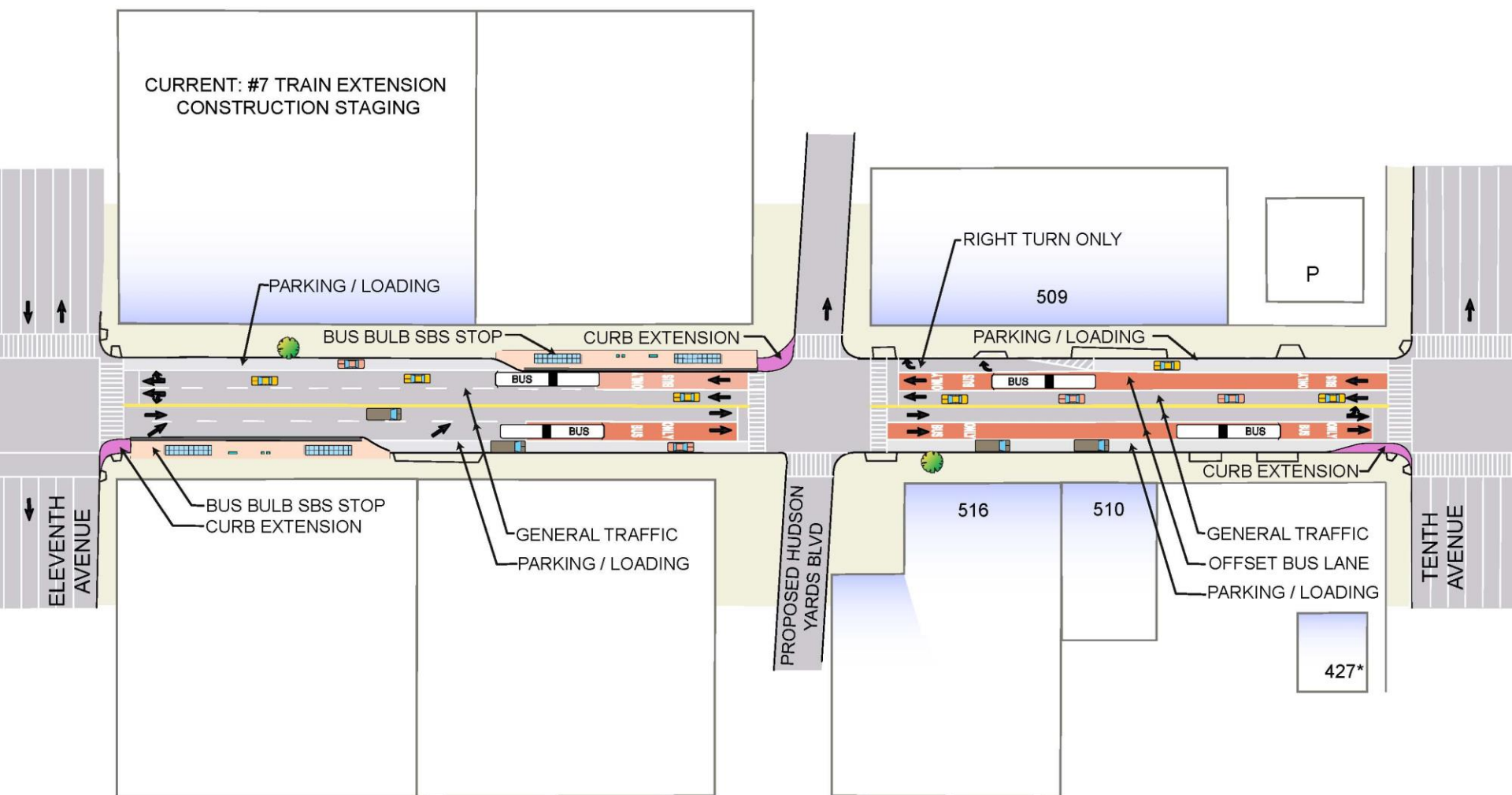
- **Peak Period Regulations:**
  - 7 AM-7 PM
  - 7-10 AM
  - 4-7 PM
- **Night Regulations:**
  - 7 PM-7 AM
  - Midnight-7 AM
- **Day of Week Regulations:**
  - Weekdays only
  - Weekends/Sundays only











JACOB K. JAVITS  
CONVENTION CENTER

625

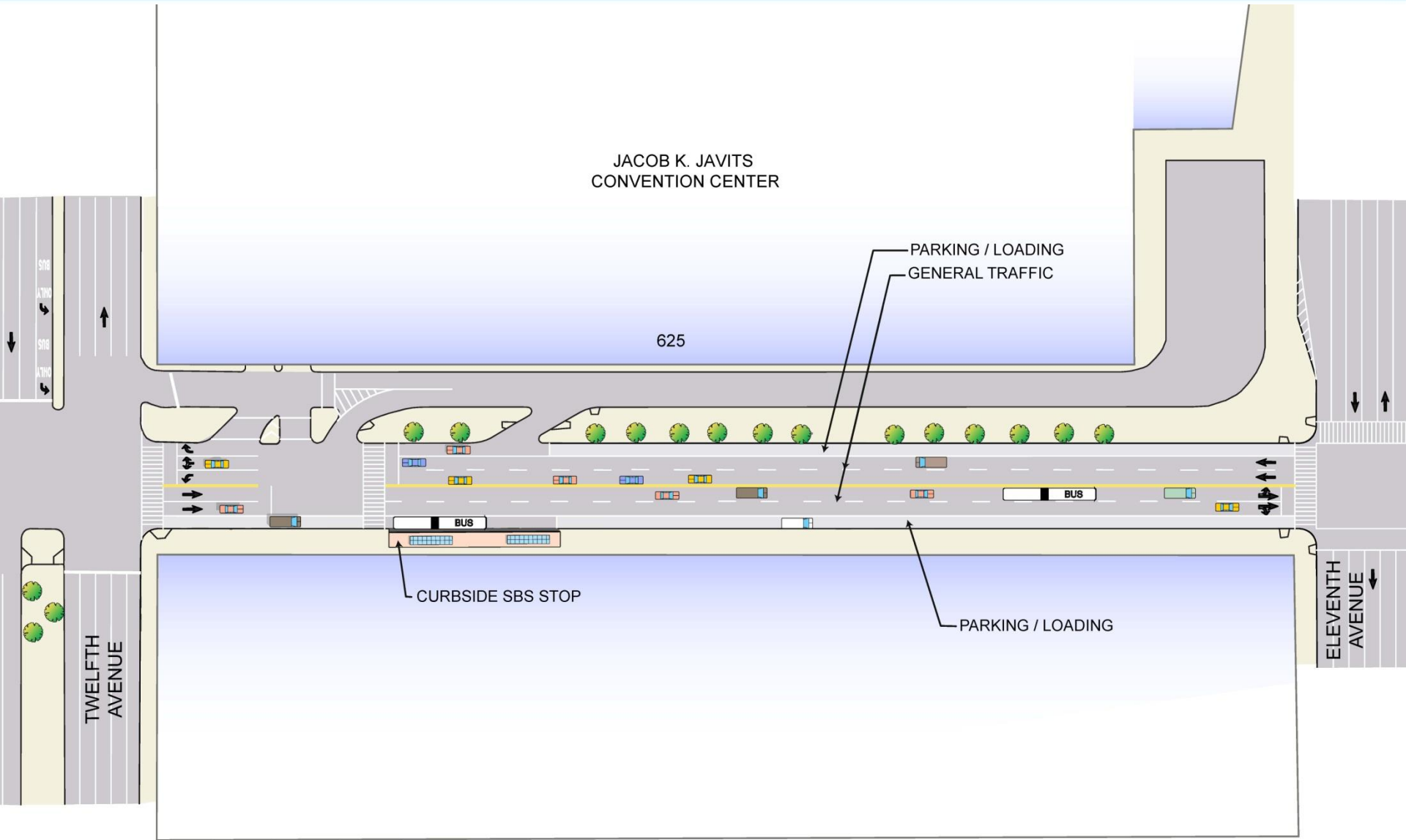
PARKING / LOADING  
GENERAL TRAFFIC

CURBSIDE SBS STOP

PARKING / LOADING

TWELFTH  
AVENUE

ELEVENTH  
AVENUE



# 34<sup>th</sup> St SBS Schedule Update

# 34<sup>th</sup> Street SBS: Phasing



West Section – Hudson Yards Development Corporation



Middle Section – City of New York with New York City Transit



East Section – City of New York



# Construction Schedule: West Section

- **Details**

- Section is part of Hudson Park and Boulevard Project
- Construction by Hudson Yards Development Corporation
- Elements: bus lanes, loading zones, and 2 bus bulbs

- **Schedule**

- Construction start: June 2012
- Construction completion: July 2013



# Construction Schedule: Middle Section

- **Details**

- Section will be constructed by City of New York with New York City Transit
- Elements: bus lanes, loading zones, and 9 bus bulbs

- **Schedule**

- Construction start: August 2012
- Construction completion: April 2013





# Construction Schedule: East Section

- **Details**

- Section will be constructed by City of New York
- DEP elements: replacement water main and sewer line
- DOT elements: bus lanes, loading zones, and 3 bus bulbs

- **Schedule**

- Construction start: summer 2013
- Construction completion: fall 2014



# Thank You