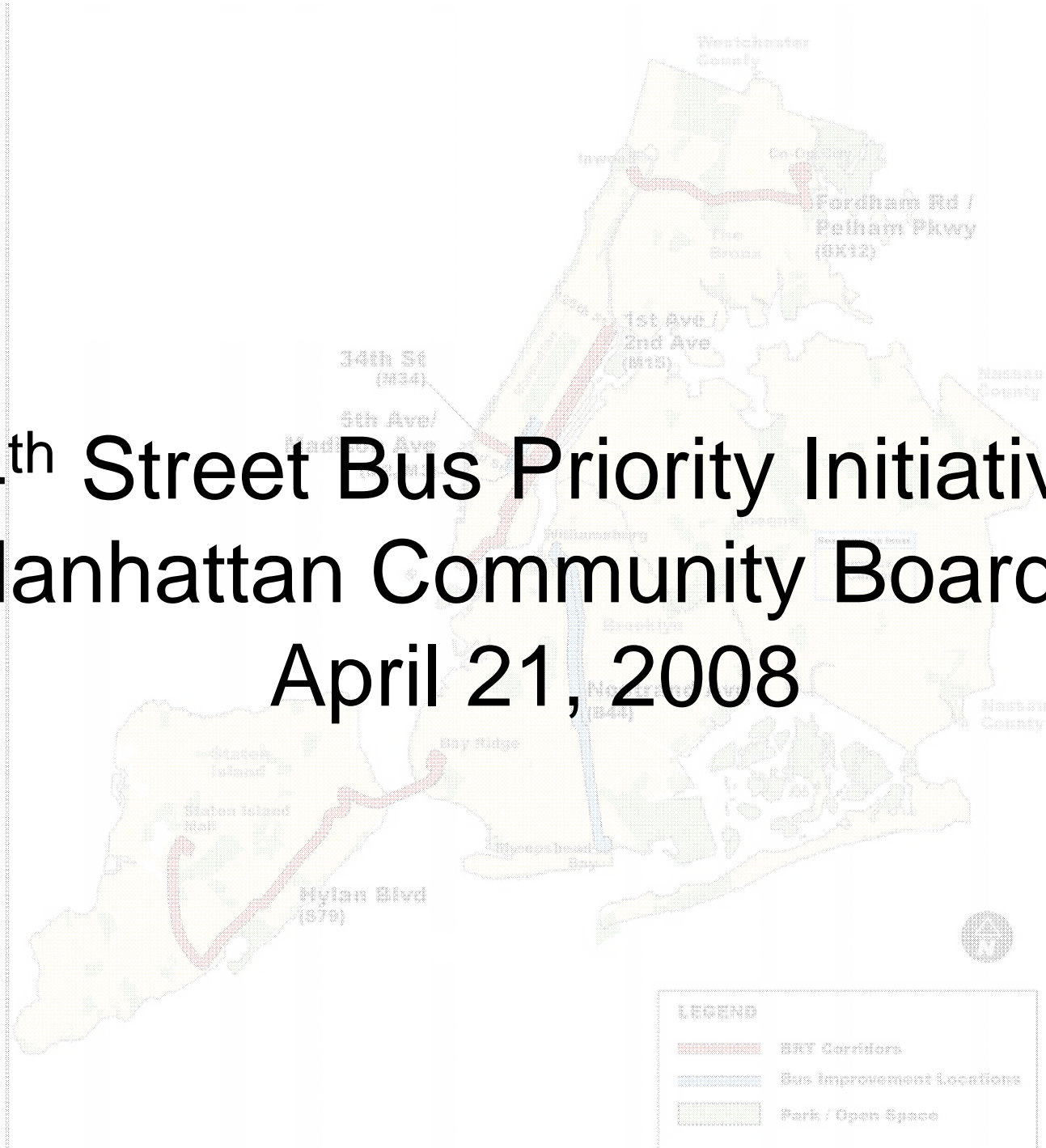


34th Street Bus Priority Initiatives

Manhattan Community Board 5

April 21, 2008



BRT Feasibility Study

- Initial BRT study focused on improving existing bus routes in each borough



BRT corridors as of Spring 2007

Today's BRT Program

Bus Priority

- Fifth & Madison Avenues
- 34th Street

Bus Hot Spots

- Downtown Brooklyn
- Jamaica Center

BRT

- Fordham Road & Pelham Parkway
- First & Second Avenues
- Nostrand Avenue
- 34th Street
- Hylan Boulevard



Fifth Avenue/Madison Avenue Bus Priority



Fifth Avenue/Madison Avenue

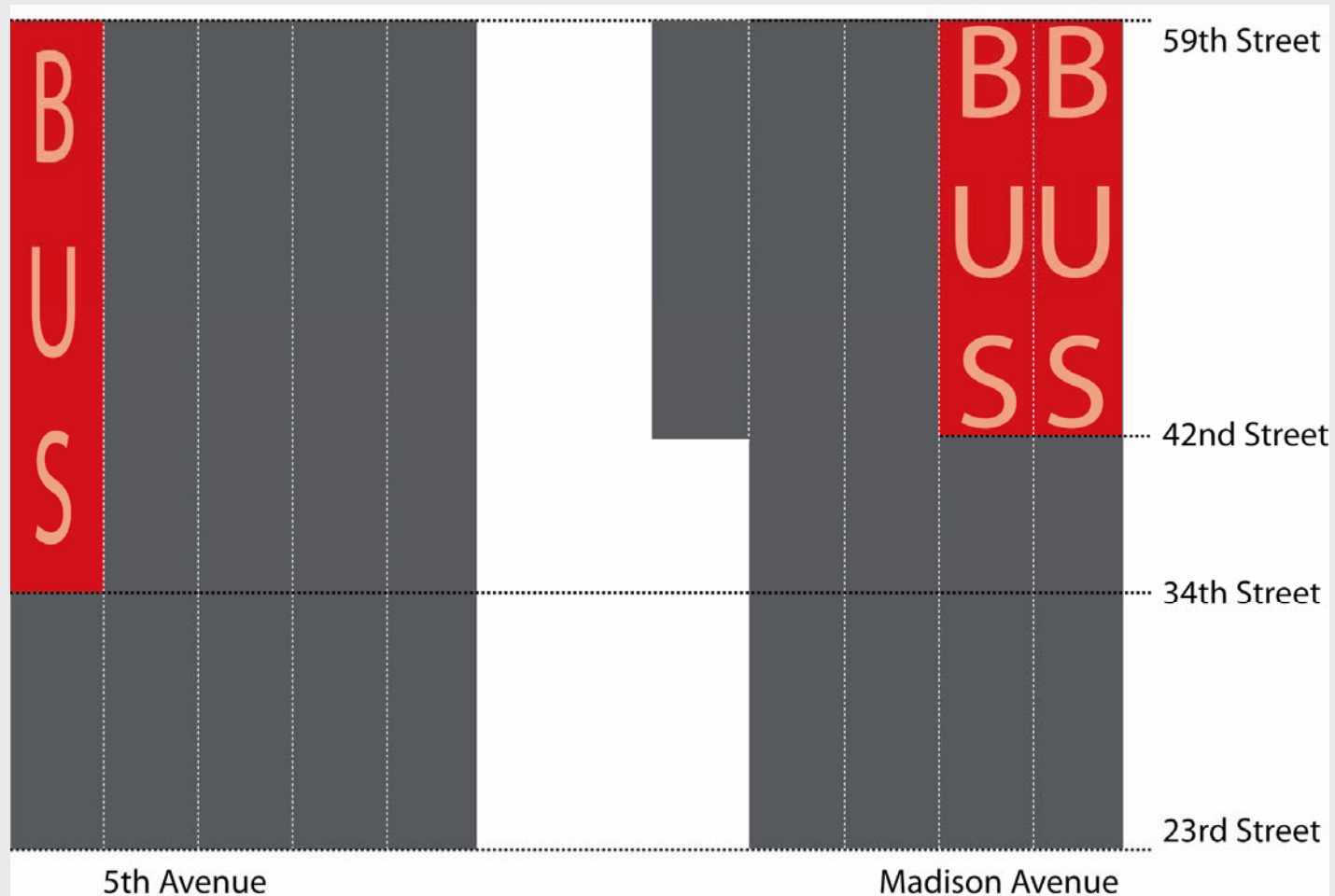
Key Features:

- 5th Avenue converted to double bus lane, extended to 23rd street this fall
- Madison Avenue double bus lane extended to 23rd street
- Bus lanes painted red
- Additional overhead signage



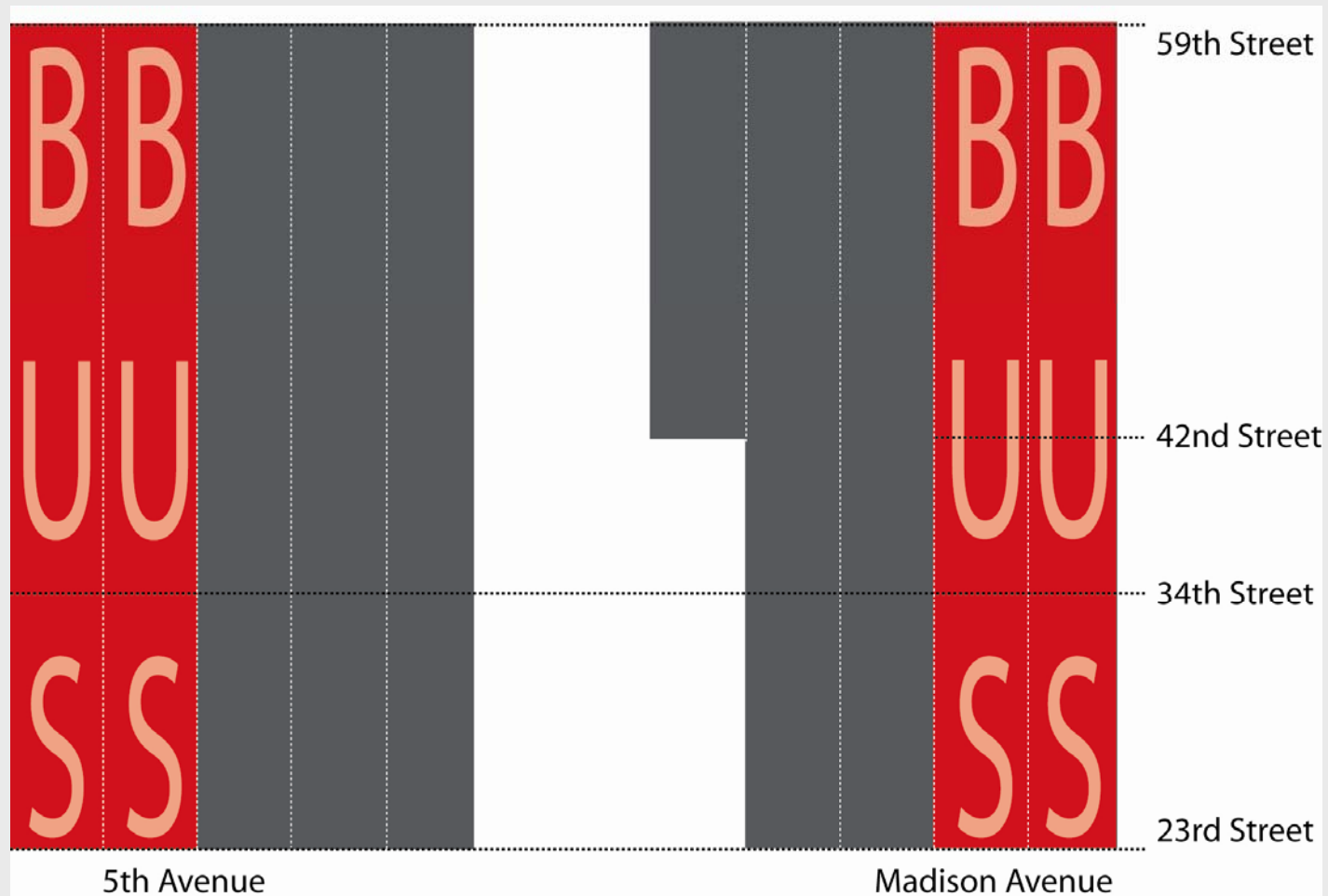
Fifth Avenue/Madison Avenue

Existing Conditions



- 5th Avenue has a single bus lane from 86th street to 34th street
- Madison Avenue has a double bus lane from 42nd street to 59th street

Fifth Avenue/Madison Avenue Proposed Conditions



- 5th Avenue converted to double bus lane, extended to 23rd street
- Madison Avenue double bus lane extended to 23rd street

Fifth Avenue/Madison Avenue Bus Priority

Before



Madison Avenue

After



Fifth Avenue/Madison Avenue Bus Priority

Before



5th Avenue

After



Fifth Avenue/Madison Avenue

Overall Benefits:

- Corridor serves 6 local bus routes with over 100,000 combined daily riders
- Also serves express bus routes from all outer boroughs
- Will improve travel times by up to 20% through the corridor
- Limited and express buses will be able to pass stopped locals without entering general traffic
- Reliability will be substantially improved

34th Street Bus Priority

*Dedicated 2-way transitway
for the entire length of 34th Street*



34th Street Bus Priority

Key Features:

- 34th Street will be repaved and restriped for 5 travel lanes from 3rd avenue to 9th avenue this spring
 - Safety improvement
 - Overall operational improvement
- River-to-river curb bus lanes will be improved
 - Red lanes
 - New overhead signage
 - Extended hours
- Will be implemented by end of 2008



Existing narrow lanes on 34th Street

34th Street Existing



34th Street Bus Priority



34th Street Bus Priority

Overall Benefits:

- Crosstown bus service will move faster, benefiting over 15,000 local riders per day
- Plan also benefits express buses on 23 routes
- Regular travel lanes will be brought to appropriate design standard
- Normal lane widths will improve traffic safety

34th Street Transitway

*Dedicated 2-way transitway
for the entire length of 34th Street*

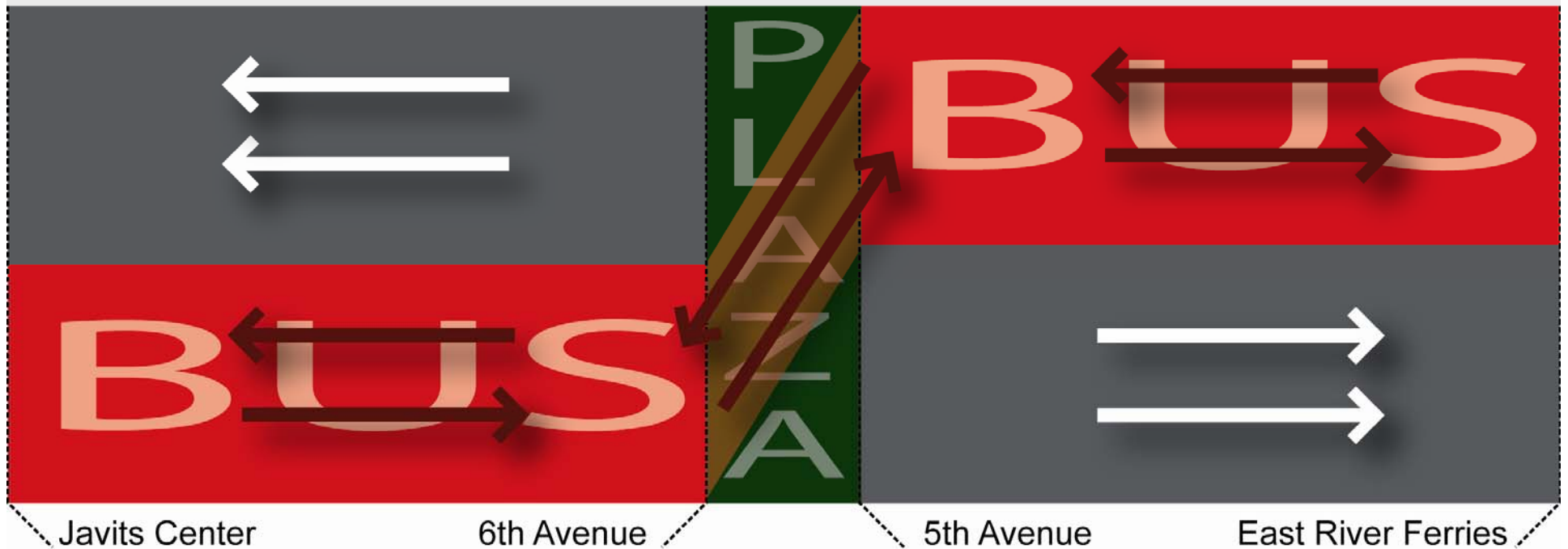


34th Street Long Term Concept

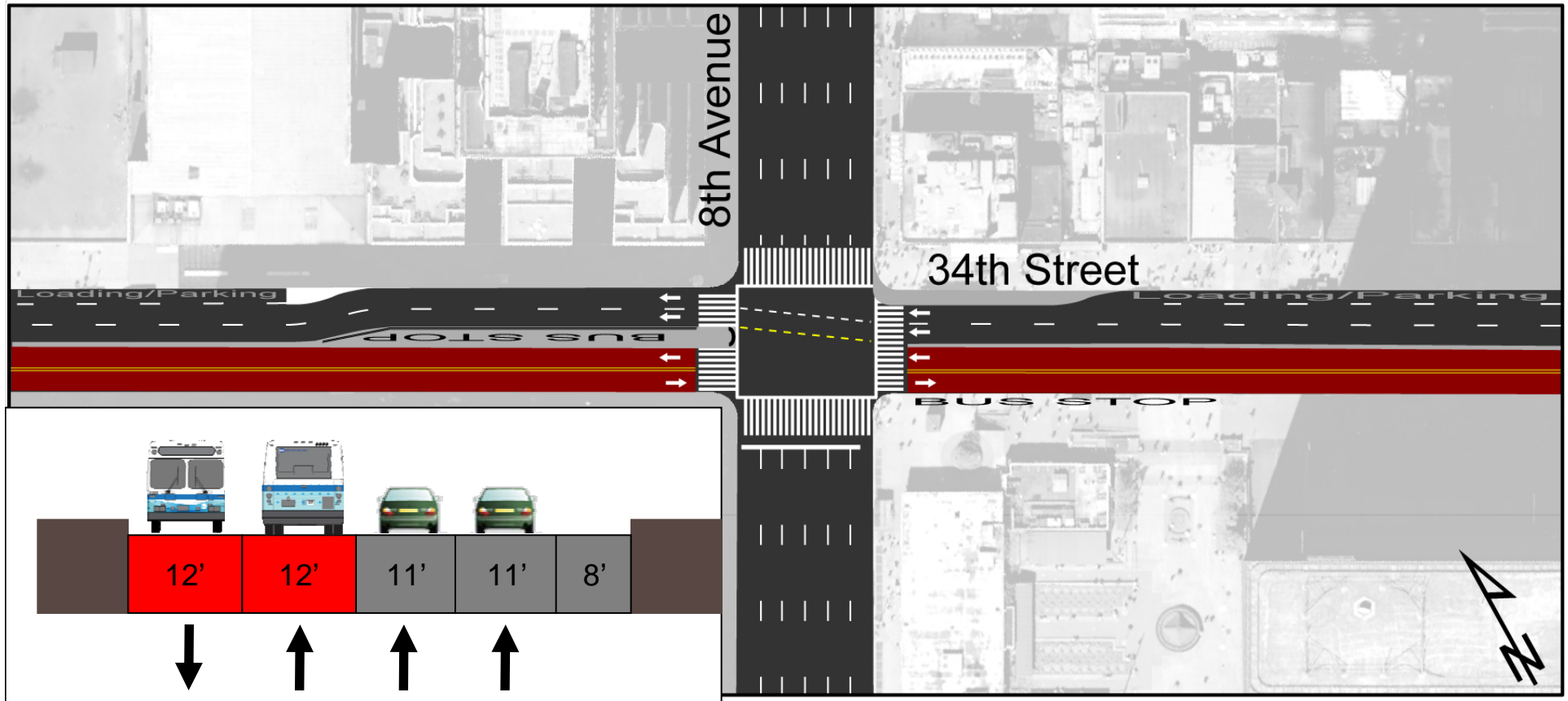
Potential Transitway Features:

- River-to-river fully separated two way transitway will be built on one side of 34th street
- Options for the rest of the right of way include:
 - One-way traffic outbound from midtown
 - One-way traffic westbound
 - New plaza and pedestrian spaces
 - Reserved commercial loading space
- Transitway will decrease travel time by up to 45% for crosstown bus service

34th Street Transitway Concept

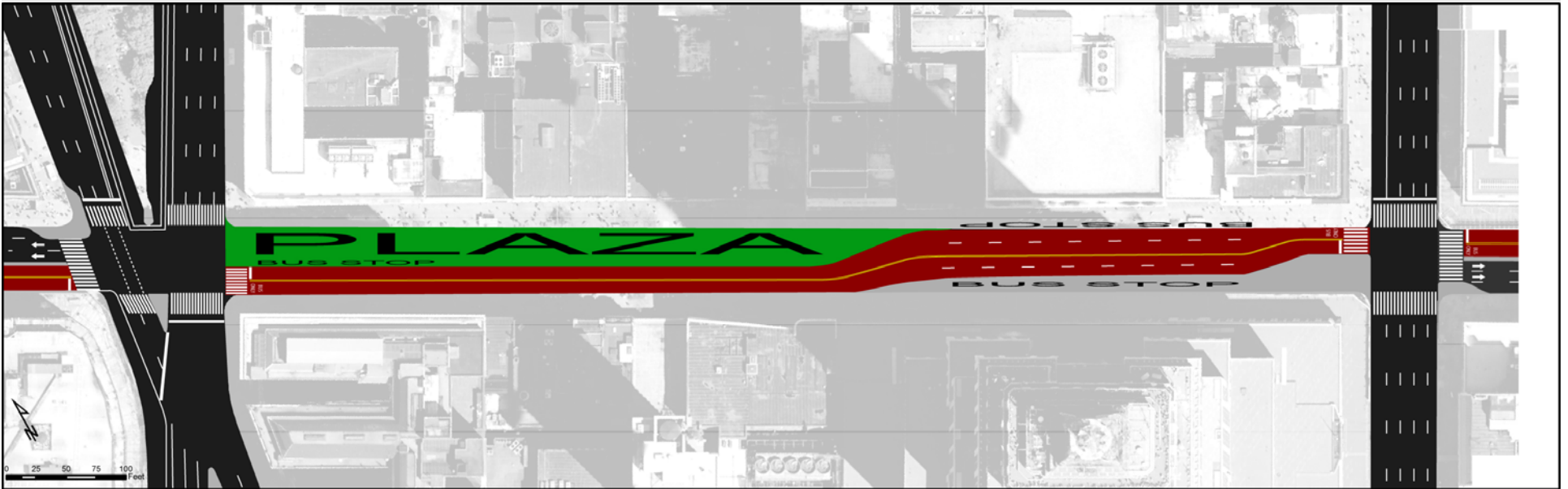


34th Street Transitway Concept



34th Street at 8th Avenue

34th Street Transitway Concept



34th Street between 5th and 6th Avenues

34th Street Transitway Concept

Overall Benefits:

- Significant increase in crosstown transit capacity and speed and reliability
- Additional pedestrian space at high traffic bus stops
- New plazas on 34th street
- Improved access and distribution for express buses from outer boroughs – helping reduce auto trips