

NYC BUILD IT BACK

Stronger & Safer

HOME DESIGN SELECTION BROCHURE

For Repair Program Homeowners



Michael R. Bloomberg
Mayor

Housing
Recovery

Brad Gair
Director of Housing Recovery Operations

Contents

| | |
|-----------------------------------|-----------|
| Information | 4 |
| Checklist | 6 |
| Appliances | 14 |
| Cabinets & Countertops | 18 |
| Bath | 20 |
| Doors | 22 |
| Floors | 24 |
| Lights & Fans | 28 |
| Exterior | 30 |

Homeowner Information

The NYC Build it Back Repair program provides assistance to eligible New Yorkers whose homes have suffered minor and substantial damage from Hurricane Sandy. Depending on your home's level of damage, you can play a key role in designing some of the repairs.

Add Your Design Touch to Your Repairs

Build it Back Design Specialists and a Build it Back Contractor will visit your home for a Design Consultation meeting. At this meeting, Design Specialists will work with you and your Contractor to fully assess your repair needs and develop construction plans. The Design Specialists will determine which items in this brochure you are eligible to receive and finalize the materials needed for your repair. Depending on the results of your assessment and what needs to be repaired in your home, some items will require your design touch, including:

- › Kitchen cabinets, countertops and sink
- › Kitchen appliances
- › Bathroom toilets and sinks
- › Lighting and ceiling fans
- › Flooring
- › Interior and exterior doors
- › Exterior siding or paint color
- › Roofing color

Your Design Specialist will review your selections with you at the meeting and incorporate them into your repair work.

Explore the Brochure and Make Your Selections

This brochure includes all possible items that you may have a choice in selecting for your home. Your Design Specialist will tell you which items you are eligible to receive in your home. Use your Home Design Checklist on page 6 to select the style and/or color of these items that you prefer in each room of your home.

Please note: The pictures throughout this brochure show examples of room designs and some items that may be installed in homes repaired by the Build it Back program. The design of your room(s) and the exact items that will be installed may vary.

Checklist

The Design Specialist will determine the eligible items that you can customize and will help you make your final choices at the Design Consultation. However, it is important that you review this brochure before the meeting.

Based on the repairs you think your home needs, select the styles and/or colors that you prefer. For example, if your kitchen was flooded and needs repair, choose the style and/or color you like for the kitchen appliances, floors, cabinets and sinks.

Kitchen Appliances

Refrigerator:

Choose top or bottom freezer and one color.

Top Freezer

- White
- Black
- Silver

Bottom Freezer

- White
- Black

Dishwasher:

Choose one color.

- White
- Black
- Silver

Range:

Choose electric or gas and one color.

Electric

- White
- Black
- Silver

Gas

- White
- Black
- Silver

Over the Range:

Choose microwave or hood fan and one color.

Microwave

- White
- Black
- Silver

Hood Fan

- White
- Black
- Silver

Kitchen (continued)

Cabinets:

Choose one style and one color.

Door Style

- Beaded
- Recessed
- Slab

Color

- White
- Natural
- Medium Brown
- Dark Brown-Black

Countertop:

Choose one color.

- White
- Tan
- Brown
- Gray-Black

Sink:

Choose one model. Note: Double sink requires wider base cabinet and is only available if space permits.

- Single
- Double

Floor:

Choose ceramic, plank or tile and one color.

Ceramic

- White
- Gray
- Black
- Checkerboard

Wood Look

Vinyl Plank

- Light
- Medium
- Dark

Vinyl Tile

- White
- Gray
- Black
- Blue

Light:

Choose one model.

- Traditional
- Modern

Bathroom One

Toilet:

Choose one style.

- Standard-height/1.28-gal Single-flush
- Comfort-height/Dual-flush

Sink:

Choose one style.

- Cabinet
- Pedestal

Floor:

Choose one color.

- White
- Gray
- Black
- Checkerboard
- Hexagon

Bathroom Two (if applicable)

Toilet:

Choose one style.

- Standard-height/1.28-gal Single-flush
- Comfort-height/Dual-flush

Sink:

Choose one style.

- Cabinet
- Pedestal

Floor:

Choose one color.

- White
- Gray
- Black
- Checkerboard
- Hexagon

Foyer Area (if separate from living room)

Floor:

Choose carpet, plank or tile and one color.

Carpet

- Sand
- Tan
- Brown
- Chocolate
- Blue
- Moss
- Forest
- Wine Red

Wood Look

Vinyl Plank

- Light
- Medium
- Dark

Vinyl Tile

- White
- Black
- Blue
- Gray

Dining & Living Room

Dining Room Light:

Choose one style.

- Pendant
- Uplight
- Modern
- Traditional

Living Room Light:

Choose fan in one color or light in one style.

Fan

- White
- Brown

Light

- Pendant
- Uplight
- Modern
- Traditional

Dining & Living Room (continued)

Floor:

Choose carpet or plank and one color.

Carpet

- Sand
- Tan
- Brown
- Chocolate
- Blue
- Moss
- Forest
- Wine Red

Wood Look

Vinyl Plank

- Light
- Medium
- Dark

Bedroom One

Light:

Choose fan in one color or standard light.

Fan

- White
- Brown

Ceiling Light

- Standard

Floor:

Choose carpet or plank and one color.

Carpet

- Sand
- Tan
- Brown
- Chocolate
- Blue
- Moss
- Forest
- Wine Red

Wood Look

Vinyl Plank

- Light
- Medium
- Dark

Bedroom Two

Light:

Choose fan in one color or standard light.

Fan

- White
- Brown

Ceiling Light

- Standard

Floor:

Choose carpet or plank and one color.

Carpet

- Sand
- Tan
- Brown
- Chocolate
- Blue
- Moss
- Forest
- Wine Red

Wood Look

Vinyl Plank

- Light
- Medium
- Dark

Doors

Interior:

Choose one style.

- Flush
- Frame
- Ladder

Exterior (steel only):

Choose one style.

- Flush
- 3-Panel Glass
- 6-Panel Opaque
- 6-Panel Glass

Exterior

Siding:

Choose vinyl or cement fiber and one color.

Vinyl

- White
- Sand
- Olive
- Slate Blue
- Brick Red

Cement Fiber

- White
- Beige
- Mustard
- Forest Green
- Slate Blue
- Red
- Brown
- Gray

Roof:

Choose one color.

- White
- Gray
- Tan
- Brown
- Black

Appliances



Refrigerators

Top Freezer

> White



> Silver



> Black



Bottom Freezer

> White



> Black



Dishwashers

> White



> Silver



> Black



Ranges

Electric

> White



> Silver



> Black



Gas

> White



> Silver



> Black



Appliances

Over the Range

Microwave



> White



> Silver



> Black



Hood Fan



> White



> Silver



> Black



Kitchen Sinks



> Single

> Double*

* Requires wider base cabinet and is only available if space permits.

Cabinets & Countertops

The design of your room(s) and the exact items that will be installed will vary from the illustration below.



Cabinets



Beaded

- > White 
- > Natural 
- > Medium Brown 
- > Dark Brown-Black 




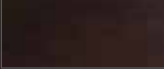


Recessed

- > White 
- > Natural 
- > Medium Brown 
- > Dark Brown-Black 



Slab

- > White 
- > Natural 
- > Medium Brown 
- > Dark Brown-Black 

Countertops



> White



> Tan



> Brown



> Gray-Black

Bath

The design of your room(s) and the exact items that will be installed will vary from the illustration below.



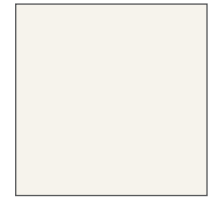
Toilets



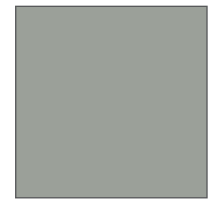
> Standard-height
1.28-gal Single-flush

> Comfort-height
Dual-flush

Floor



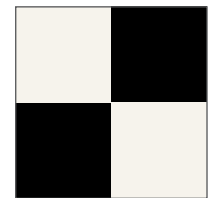
> White



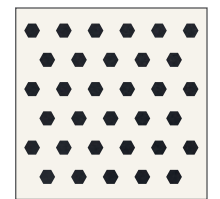
> Gray



> Black



> Checkerboard



> Hexagon

Bathroom Sinks



> Cabinet



> Pedestal

Doors

Interior



> Flush



> Frame



> Ladder

Exterior (steel only)



> Flush



> 3-Panel Glass



> 6-Panel Opaque



> 6-Panel Glass

Floors

Living/Dining/Bedroom

Carpeting



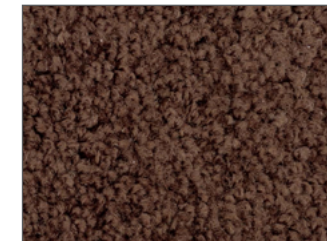
> Sand



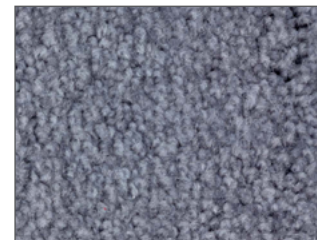
> Tan



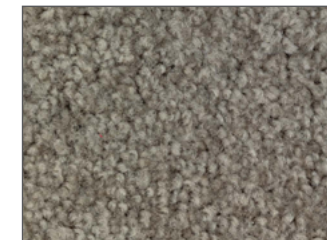
> Brown



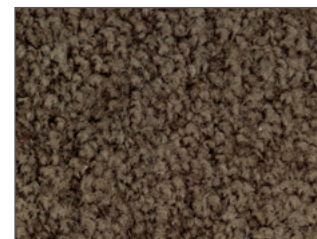
> Chocolate



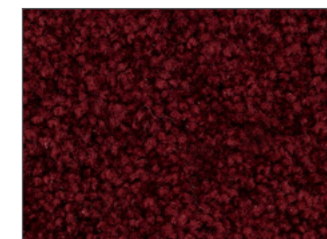
> Blue



> Moss



> Forest



> Wine Red

Wood Look Vinyl Plank



> Light



> Medium



> Dark

Floors

The design of your room(s) and the exact items that will be installed will vary from the illustration below.

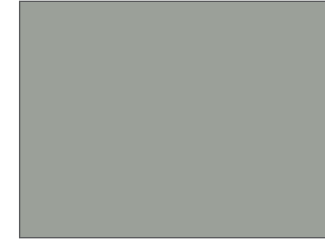


Kitchen

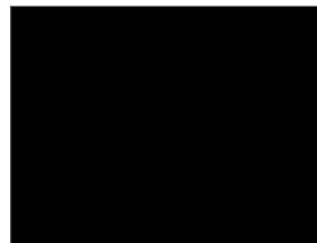
Ceramic



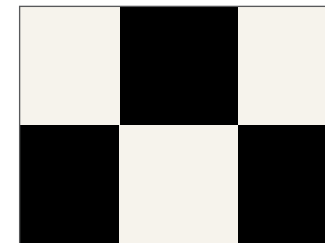
> White



> Gray



> Black



> Checkerboard

Vinyl Tile



> White



> Black



> Blue



> Gray

Wood Look Vinyl Plank



> Light



> Medium



> Dark

Lights & Fans

Kitchen/Dining Room/Living Room



> Modern



> Traditional

Dining Room/Living Room



> Pendant



> Uplight

Living Room/Bedroom



> White



> Brown

Exterior

Roof



> White



> Gray



> Tan



> Brown



> Black

Exterior

Vinyl Siding



> White



> Sand



> Olive



> Slate Blue



> Brick Red

Cement Fiber Siding



> White



> Beige



> Mustard



> Forest Green



> Slate Blue



> Red



> Brown



> Gray

Notes

nyc.gov/builditback



@NYCBUILDITBACK

PRINTED ON
100%
RECYCLED PAPER
PLEASE RECYCLE!



NYCTM Housing
Recovery



WE ARE PLEDGED TO THE LETTER AND SPIRIT OF U.S. POLICY FOR THE ACHIEVEMENT OF EQUAL HOUSING OPPORTUNITY THROUGHOUT THE NATION. WE ENCOURAGE AND SUPPORT AN AFFIRMATIVE ADVERTISING AND MARKETING PROGRAM IN WHICH THERE ARE NO BARRIERS TO OBTAINING HOUSING BECAUSE OF RACE, COLOR, RELIGION, SEX, HANDICAP, FAMILIAL STATUS, OR NATIONAL ORIGIN.